

CITY OF FORT THOMAS
CAMPBELL COUNTY, KENTUCKY
FORT THOMAS 2025 STREET
RESURFACING PROGRAM

242645-A

CITY OF FORT THOMAS OFFICIALS

MAYOR

ERIC HAAS

CITY CLERK

MELISSA BECKETT

CITY COUNCIL MEMBERS

JEFF BEZOLD

ADAM BLAU

ANDY ELLISON

LAUREN MCINTOSH

BEN PENDERY

ERIC STRANGE

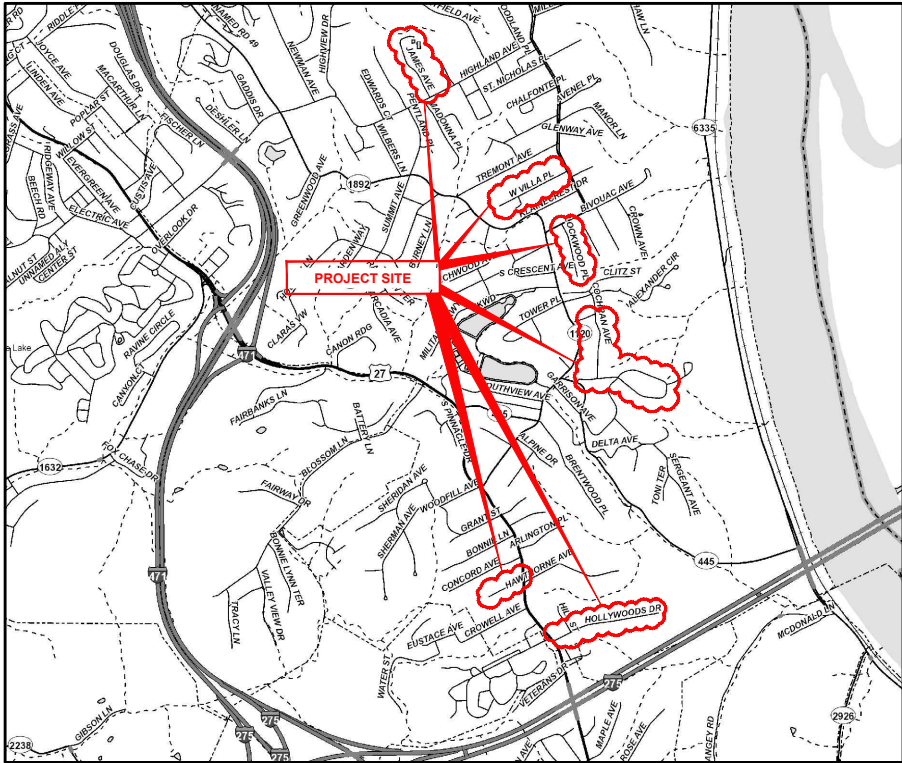
GENERAL SERVICES DIRECTOR

KEVIN BARBIAN

PUBLIC WORKS DIRECTOR

TIM MATTINGLY

INDEX OF SHEETS		
NO.	DWG NAME	SHEET NAME
1	TTL	TITLE
2	NOTES	NOTES & LEGEND
3	DTL-1	DETAIL SHEET 1
4	DTL-2	DETAIL SHEET 2
5	PLAN-1	HOLLYWOODS (10+00 TO 24+00)
6	PLAN-2	HOLLYWOOD (24+00 TO 27+10) PLEASANT (30+00 TO 36+00)
7	PLAN-3	CARMEL MANOR (40+00 TO 47+00)
8	PLAN-4	CARMEL MANOR (47+00 TO 65+00)
9	PLAN-5	COCHRAN (70+00 TO 81+30)
10	PLAN-6	LOCKWOOD (100+00 TO 109+10)
11	PLAN-7	W. VILLA (110+00 TO 121+80)
12	PLAN-8	JAMES (130+00 TO 143+60)
13	PLAN-9	ARMORY PARKING LOT



VICINITY MAP

K.T.C SPECIFICATIONS

THE LATEST STANDARD SPECIFICATIONS OF THE KENTUCKY TRANSPORTATION CABINET, INCLUDING CHANGES AND SUPPLEMENTAL SPECIFICATIONS THERETO.

SOURCE OF BOUNDARY INFORMATION

THE BOUNDARY INFORMATION SHOWN ON THESE PLANS IS BASED UPON CAMPBELL COUNTY G.I.S. MAPPING AND DOES NOT REPRESENT AN ACTUAL FIELD BOUNDARY SURVEY BY VERDANTAS, LLC.



verdantas

2161 CHAMBER CENTER DRIVE
FORT MITCHELL, KENTUCKY 41017
TEL: (609) 526-0844
WWW.VERDANTAS.COM


DATE	REVISION	NO	BID	ISSUED FOR:
			05012025	
			AS SHOWN	
			RSEI	
			RSEI	
			FTWE	

FORT THOMAS 2025 STREET
RESURFACING PROGRAM
CITY OF FORT THOMAS
CAMPBELL COUNTY, KENTUCKY

TITLE SHEET

PROJECT NO.	242645-A
DISCIPLINE	CIVIL
SHEET NAME	TTL
SHEET	1
OF	13

GENERAL NOTES	UTILITY NOTES	MAINTENANCE OF TRAFFIC NOTES	EROSION CONTROL LEGEND	HATCH LEGEND	SYMBOL LEGEND
<div><div>1. ALL CONSTRUCTION SHALL CONFORM TO THESE PLANS AND SPECIFICATIONS, THE LATEST EDITION OF THE FORT THOMAS SUBDIVISION REGULATIONS AND THE KENTUCKY DEPARTMENT OF HIGHWAYS STANDARD SPECIFICATIONS FOR ROAD AND BRIDGE CONSTRUCTION.</div><div>2. EXPANSION MATERIAL SHALL BE FLEXIBLE FOAM MATERIAL, SUCH AS CERAMAR BY W.R. MEADOWS OR APPROVED EQUAL, INSTALLED IN AREAS OF CONCRETE WALK, DRIVES OR CURB/GUTTER ONLY AT THE FOLLOWING:<div><div>A. AT ALL FIXED OBJECTS (I.E. UTILITY COVERS, VALVES, MANHOLES, ETC.)</div><div>B. AT ALL RIGID STRUCTURES (I.E. DRIVES, CURBS, STEPS, ETC.) PAYMENT FOR THIS ITEM AND ZIP STRIPS INCLUDED IN THE PERTINENT CONCRETE PAVEMENT UNIT PRICE.</div><div>C. AT ALL STREET INTERSECTIONS AT THE POINT OF CURVATURE OF THE TURNING RADII ENTERING THE INTERSECTION.</div><div>D. NO CONCRETE SHALL BE LEFT ABOVE THE EXPANSION MATERIAL OR ACROSS THE JOINT AT ANY POINT. ANY CONCRETE SPANNING THE ENDS OF THE JOINT NEXT TO THE FORMS SHALL BE CAREFULLY CUT AWAY AFTER THE FORMS ARE REMOVED. BEFORE THE PAVEMENT IS OPENED TO TRAFFIC, THE GROOVE ABOVE THE EXPANSION JOINT MATERIAL SHALL BE CLEANED AND SEALED WITH JOINT SEALING MATERIAL.</div></div></div><div>3. A WATER MAIN PROJECT ON HOLLY WOODS AND PLEASANT WILL PRECEDE THIS PROJECT. ANTICIPATED COMPLETION OF WATER MAIN IS AUGUST 15, 2025. THE SIDEWALK AND CURB PROJECT WILL PRECEDE THIS PROJECT AND SHALL BE COMPLETED NO LATER THAN SEPTEMBER 15, 2025. ROADWAY RESURFACING PROJECT MAY NOT BEGIN BEFORE SEPTEMBER 15, 2025 UNLESS THE PRECEDING PROJECT HAVE COMPLETED EARLY AND SHALL BE SUBSTANTIALLY COMPLETE NO LATER THAN NOVEMBER 15, 2025.</div><div>4. DOWNSPOUT AND UNDERDRAIN CONSTRUCTION SHALL MEET THESE AND THE LATEST SPECIFICATION OF THE FORT THOMAS SUBDIVISION REGULATIONS, SD-1 REGULATIONS AND STANDARD DRAWINGS, AND DETAILS SHOWN ON THIS PLAN. BEDDING, BACKFILLING, JOINTS, EXCAVATION AND INSTALLATION SHALL BE INCLUDED IN THE COST PER FOOT OF PIPE. STORM SEWER, DOWNSPOUT AND UNDERDRAIN PIPE MATERIAL SHALL HAVE A MANNING'S "N" VALUE OF 0.013 OR LESS (UNLESS OTHERWISE SHOWN) AND BE RIGID / SMOOTH INTERIOR WALLED PVC SDR-35 PIPE, RIBBED PVC PIPE, A-2000 PVC PIPE, UNLESS OTHERWISE SHOWN.</div><div>5. ALL DISTURBED AREAS ARE TO BE RESTORED (SEEDED AND MULCHED) BY THE CONTRACTOR AND SHALL PROCEED WITH JOB PROGRESSION. THE CONTRACTOR SHALL ALSO BE RESPONSIBLE FOR REMOVING ANY EXCESS MATERIALS AT THE SITE AND MAINTAINING ALL SEEDED AND MULCHED AREAS UNTIL PROJECT COMPLETION AND FINAL INSPECTION PER KDOT SPEC. 212. A RESIDENTIAL YARD SHALL BE RESTORED WITHIN TWENTY-ONE (21) DAYS AFTER CONSTRUCTION.</div><div>6. ALL APPLICABLE RECOMMENDATIONS IN KENTUCKY'S BEST MANAGEMENT PRACTICES MANUAL SHALL BE FOLLOWED BY THE CONTRACTOR, INCLUDING SEEDING OF DISTURBED GROUND.</div><div>7. RIGHT-OF-WAY AND PROPERTY LINES SHOWN ARE PLOTTED FROM CAMPBELL COUNTY G.I.S. MAPPING AND ARE APPROXIMATE AND NOT THE RESULT OF A FIELD BOUNDARY SURVEY.</div><div>8. THE CONTRACTOR SHALL LIMIT THEIR WORK AREA TO THE EASEMENTS AND RIGHTS-OF-WAY SHOWN ON THESE PLANS UNLESS WRITTEN PERMISSION IS GIVEN BY THE PROPERTY OWNER AND APPROVED BY THE CITY OF FORT THOMAS.</div><div>9. ALL OSHA, STATE AND LOCAL SAFETY REGULATIONS SHALL BE FOLLOWED DURING CONSTRUCTION.</div><div>10. RELOCATION OR REINSTALLATION OF EXISTING MAIL BOXES, FENCES, PRIVATE LANDSCAPE LIGHTS, PRIVATE SIGNS, STREET SIGNS, RESTORATION OF LANDSCAPING AND TREATMENT OF EXISTING WALLS WHERE A PORTION HAS BEEN REMOVED SHALL BE INCIDENTAL TO CLEARING AND GRUBBING.</div><div>11. NO CONSTRUCTION SHALL COMMENCE UNTIL ALL CAMPBELL COUNTY AND THE CITY OF FORT THOMAS PERMITS HAVE BEEN ISSUED AS REQUIRED.</div><div>12. THE CONTRACTOR SHALL COORDINATE ALL WORK WITHIN THE PUBLIC RIGHT OF WAY WITH THE CITY OF FORT THOMAS. LOCAL TRAFFIC MUST BE MAINTAINED AT ALL TIMES DURING CONSTRUCTION UNLESS OTHERWISE NOTED IN THESE PLANS.</div><div>13. ADDITIONAL BMP'S AND EROSION AND SEDIMENT CONTROL MEASURES MAY BE REQUIRED AS DEEMED NECESSARY. ALL COST FOR ABOVE SHALL BE INCLUDED IN LUMP SUM BID FOR EROSION CONTROL AND WATER POLLUTION CONTROL.</div><div>14. LIMITS OF DRIVEWAY APRON & SIDEWALK REPLACEMENT TO BE MARKED IN THE FIELD BY THE ENGINEER. ADDITIONAL DRIVEWAY & SIDEWALK REPLACEMENTS, NOT SHOWN ON THE PLANS MAY BE REQUIRED BY THE ENGINEER.</div></div> <div><div>1. THIS PLAN SHOWS THE APPROXIMATE LOCATION OF UNDERGROUND UTILITIES (GAS, WATER, STORM SEWER, SANITARY SEWER, TELEPHONE, ELECTRIC, ETC.). THE PREPARER DOES NOT GUARANTEE THEIR ACCURACY OR CORRECTNESS. THE INFORMATION PROVIDED SHALL BE FIELD VERIFIED PRIOR TO CONSTRUCTION. THE CONTRACTOR SHALL BE RESPONSIBLE FOR MAINTAINING THE UTILITY AS WELL AS THE SERVICE LATERALS AT ALL TIMES DURING CONSTRUCTION. THE CONTRACTOR SHALL PRACTICE CARE DURING THE GRADING AND TRENCH EXCAVATION AND SHALL BE RESPONSIBLE FOR REPLACING ANY SERVICES THAT ARE DAMAGED DURING CONSTRUCTION AT THEIR EXPENSE.</div><div>2. PRIOR TO ANY EXCAVATION OVER AN EXISTING UTILITY LINE OR SERVICE, CONTRACTOR SHALL HAND EXCAVATE TO EXPOSE THE UTILITY AND DETERMINE LOCATION AND DEPTH. NOTIFY ENGINEER IMMEDIATELY OF ANY CONFLICTS.</div><div>3. TOPS OF EXISTING AND PROPOSED CASTING ELEVATIONS ARE SUBJECT TO FINAL ADJUSTMENTS AS APPROVED BY THE ENGINEER AND REQUIREMENTS OF UTILITY OWNER. THIS WORK WILL BE INCIDENTAL TO THE CONTRACT.</div><div>4. FORTY-EIGHT (48) HOURS BEFORE EXCAVATION IS TO COMMENCE, THE CONTRACTOR SHALL NOTIFY THE FOLLOWING AGENCIES: THE KENTUCKY UTILITY PROTECTION SERVICE AND ALL OTHER UTILITIES THAT MAY HAVE UNDERGROUND UTILITIES INVOLVING THIS PROJECT AND ARE NON-MEMBERS OF KENTUCKY UNDERGROUND PROTECTION.</div></div> <div><div>1. ALL MAINTENANCE OF TRAFFIC PROCEDURES SHALL MEET THE REQUIREMENT OF THE MANUAL OF UNIFORM TRAFFIC CONTROL DEVICES AND SECTION 112 OF KTC STANDARD SPECIFICATIONS. THE CONTRACTOR SHALL MAINTAIN ACCESS TO LOCAL TRAFFIC (ACCESS TO RESIDENCES WITHIN CONSTRUCTION LIMITS) AT ALL TIMES. THE CONTRACTOR SHALL PROVIDE SUFFICIENT SIGN, WARNING LIGHTS, BARRICADES, OR OTHER NECESSARY DEVICES MAKE THE SITE SAFE TO THE TRAVELING PUBLIC.</div><div>2. IT SHALL BE THE CONTRACTOR'S RESPONSIBILITY TO SUBMIT TO THE ENGINEER AND THE OWNER A TRAFFIC CONTROL PLAN FOR THIS PROJECT.</div><div>3. PRIOR TO ANY CONSTRUCTION, THE CONTRACTOR SHALL NOTIFY THE CITY OF LAKESIDE PARK AND THE LAKESIDE PARK POLICE DEPARTMENT. AT ALL TIMES, EMERGENCY VEHICLES SHALL BE GIVEN ACCESS.</div><div>4. RESIDENTS OF THE PROJECT AREA SHALL BE ALLOWED ACCESS TO THEIR PROPERTY AT ALL TIMES.</div><div>5. EACH DRIVEWAY SHALL BE ACCESSIBLE WHENEVER POSSIBLE. WHEN PORTLAND CEMENT CONCRETE CONSTRUCTION AFFECTS A DRIVEWAY, THE CONTRACTOR SHALL NOTIFY THE AFFECTED OWNERS 24 HOURS IN ADVANCE AND ADVISE THEM TO FIND ALTERNATIVE PARKING FOR A PERIOD OF AT LEAST 10 CALENDAR DAYS AFTER THE POUR. ALTERNATIVE PARKING SHALL INCLUDE "ON STREET" PARKING WITH ACCESS TO THE PROPERTY. TEMPORARY SIDEWALKS, ETC. WILL BE NECESSARY TO PREVENT PERSONS FROM WALKING IN MUD IN ORDER TO ENTER THEIR PROPERTY. TEMPORARY BRIDGES, RAILINGS ETC. WILL BECOME NECESSARY IN ORDER TO CROSS FORMED CURB LINES, EXCAVATED AREAS BEHIND CURB LINES AND WALKWAYS, ETC.</div><div>6. WORK ON JAMES AVENUE SHOULD BE SCHEDULED TO AVOID SCHOOL PICK UPS AND DROP OFFS.</div></div> <div><div>1. ALL STORM AND SANITARY ITEMS SHALL BE IN ACCORDANCE WITH THE LATEST SPECIFICATIONS AND DETAILS FROM SD1. CONCRETE AND METAL PIPE MATERIALS SHALL NOT BE USED UNLESS OTHERWISE SPECIFIED ON THESE PLANS.</div><div>2. CONTRACTOR SHALL BE REQUIRED TO MAINTAIN STORM AND SANITARY SEWER FLOW THROUGHOUT THE PROJECT, FOR THE DURATION OF CONSTRUCTION. ALL COST FOR THE ABOVE SHALL BE INCIDENTAL TO THE CONTRACT.</div><div>3. IF REQUIRED, CONTRACTOR SHALL BE RESPONSIBLE FOR CONTACTING AND SCHEDULING STORM AND SANITARY SEWER INSPECTIONS AS SET OUT IN THE PRECONSTRUCTION MEETING.</div><div>4. CONNECTIONS INTO EXISTING OR PROPOSED STORM OR SANITARY SEWER STRUCTURES OR PIPES SHALL BE COMPLETED BY A CERTIFIED TAPPER BY SD1.</div></div> <div><div>1. ALL WORK RELATING TO WATER MAINS OR WATER SERVICE LINES SHALL BE COMPLETED IN ACCORDANCE WITH THE RULES AND REGULATIONS OF THE NORTHERN KENTUCKY WATER DISTRICT (NKWD).</div><div>2. CONTRACTOR MAY NOT USE WATER FROM FIRE HYDRANTS WITHOUT PRIOR PERMISSION FROM NKWD</div></div> <div><div>1. ALL WORK RELATING TO GAS MAINS OR GAS SERVICE LINES SHALL BE COMPLETED IN ACCORDANCE WITH THE RULES AND REGULATIONS OF THE DUKE ENERGY</div></div> <div><div>1. ALL CONSTRUCTION SHALL CONFORM TO THESE PLANS AND SPECIFICATIONS, THE LATEST EDITION OF THE FORT THOMAS SUBDIVISION REGULATIONS AND THE KENTUCKY DEPARTMENT OF HIGHWAYS STANDARD SPECIFICATIONS FOR ROAD AND BRIDGE CONSTRUCTION.</div><div>2. EXPANSION MATERIAL SHALL BE FLEXIBLE FOAM MATERIAL, SUCH AS CERAMAR BY W.R. MEADOWS OR APPROVED EQUAL, INSTALLED IN AREAS OF CONCRETE WALK, DRIVES OR CURB/GUTTER ONLY AT THE FOLLOWING:<div><div>A. AT ALL FIXED OBJECTS (I.E. UTILITY COVERS, VALVES, MANHOLES, ETC.)</div><div>B. AT ALL RIGID STRUCTURES (I.E. DRIVES, CURBS, STEPS, ETC.) PAYMENT FOR THIS ITEM AND ZIP STRIPS INCLUDED IN THE PERTINENT CONCRETE PAVEMENT UNIT PRICE.</div><div>C. AT ALL STREET INTERSECTIONS AT THE POINT OF CURVATURE OF THE TURNING RADII ENTERING THE INTERSECTION.</div><div>D. NO CONCRETE SHALL BE LEFT ABOVE THE EXPANSION MATERIAL OR ACROSS THE JOINT AT ANY POINT. ANY CONCRETE SPANNING THE ENDS OF THE JOINT NEXT TO THE FORMS SHALL BE CAREFULLY CUT AWAY AFTER THE FORMS ARE REMOVED. BEFORE THE PAVEMENT IS OPENED TO TRAFFIC, THE GROOVE ABOVE THE EXPANSION JOINT MATERIAL SHALL BE CLEANED AND SEALED WITH JOINT SEALING MATERIAL.</div></div></div><div>3. A WATER MAIN PROJECT ON HOLLY WOODS AND PLEASANT WILL PRECEDE THIS PROJECT. ANTICIPATED COMPLETION OF WATER MAIN IS AUGUST 15, 2025. THE SIDEWALK AND CURB PROJECT WILL PRECEDE THIS PROJECT AND SHALL BE COMPLETED NO LATER THAN SEPTEMBER 15, 2025. ROADWAY RESURFACING PROJECT MAY NOT BEGIN BEFORE SEPTEMBER 15, 2025 UNLESS THE PRECEDING PROJECT HAVE COMPLETED EARLY AND SHALL BE SUBSTANTIALLY COMPLETE NO LATER THAN NOVEMBER 15, 2025.</div><div>4. DOWNSPOUT AND UNDERDRAIN CONSTRUCTION SHALL MEET THESE AND THE LATEST SPECIFICATION OF THE FORT THOMAS SUBDIVISION REGULATIONS, SD-1 REGULATIONS AND STANDARD DRAWINGS, AND DETAILS SHOWN ON THIS PLAN. BEDDING, BACKFILLING, JOINTS, EXCAVATION AND INSTALLATION SHALL BE INCLUDED IN THE COST PER FOOT OF PIPE. STORM SEWER, DOWNSPOUT AND UNDERDRAIN PIPE MATERIAL SHALL HAVE A MANNING'S "N" VALUE OF 0.013 OR LESS (UNLESS OTHERWISE SHOWN) AND BE RIGID / SMOOTH INTERIOR WALLED PVC SDR-35 PIPE, RIBBED PVC PIPE, A-2000 PVC PIPE, UNLESS OTHERWISE SHOWN.</div><div>5. ALL DISTURBED AREAS ARE TO BE RESTORED (SEEDED AND MULCHED) BY THE CONTRACTOR AND SHALL PROCEED WITH JOB PROGRESSION. THE CONTRACTOR SHALL ALSO BE RESPONSIBLE FOR REMOVING ANY EXCESS MATERIALS AT THE SITE AND MAINTAINING ALL SEEDED AND MULCHED AREAS UNTIL PROJECT COMPLETION AND FINAL INSPECTION PER KDOT SPEC. 212. A RESIDENTIAL YARD SHALL BE RESTORED WITHIN TWENTY-ONE (21) DAYS AFTER CONSTRUCTION.</div><div>6. ALL APPLICABLE RECOMMENDATIONS IN KENTUCKY'S BEST MANAGEMENT PRACTICES MANUAL SHALL BE FOLLOWED BY THE CONTRACTOR, INCLUDING SEEDING OF DISTURBED GROUND.</div><div>7. RIGHT-OF-WAY AND PROPERTY LINES SHOWN ARE PLOTTED FROM CAMPBELL COUNTY G.I.S. MAPPING AND ARE APPROXIMATE AND NOT THE RESULT OF A FIELD BOUNDARY SURVEY.</div><div>8. THE CONTRACTOR SHALL LIMIT THEIR WORK AREA TO THE EASEMENTS AND RIGHTS-OF-WAY SHOWN ON THESE PLANS UNLESS WRITTEN PERMISSION IS GIVEN BY THE PROPERTY OWNER AND APPROVED BY THE CITY OF FORT THOMAS.</div><div>9. ALL OSHA, STATE AND LOCAL SAFETY REGULATIONS SHALL BE FOLLOWED DURING CONSTRUCTION.</div><div>10. RELOCATION OR REINSTALLATION OF EXISTING MAIL BOXES, FENCES, PRIVATE LANDSCAPE LIGHTS, PRIVATE SIGNS, STREET SIGNS, RESTORATION OF LANDSCAPING AND TREATMENT OF EXISTING WALLS WHERE A PORTION HAS BEEN REMOVED SHALL BE INCIDENTAL TO CLEARING AND GRUBBING.</div><div>11. NO CONSTRUCTION SHALL COMMENCE UNTIL ALL CAMPBELL COUNTY AND THE CITY OF FORT THOMAS PERMITS HAVE BEEN ISSUED AS REQUIRED.</div><div>12. THE CONTRACTOR SHALL COORDINATE ALL WORK WITHIN THE PUBLIC RIGHT OF WAY WITH THE CITY OF FORT THOMAS. LOCAL TRAFFIC MUST BE MAINTAINED AT ALL TIMES DURING CONSTRUCTION UNLESS OTHERWISE NOTED IN THESE PLANS.</div><div>13. ADDITIONAL BMP'S AND EROSION AND SEDIMENT CONTROL MEASURES MAY BE REQUIRED AS DEEMED NECESSARY. ALL COST FOR ABOVE SHALL BE INCLUDED IN LUMP SUM BID FOR EROSION CONTROL AND WATER POLLUTION CONTROL.</div><div>14. LIMITS OF DRIVEWAY APRON & SIDEWALK REPLACEMENT TO BE MARKED IN THE FIELD BY THE ENGINEER. ADDITIONAL DRIVEWAY & SIDEWALK REPLACEMENTS, NOT SHOWN ON THE PLANS MAY BE REQUIRED BY THE ENGINEER.</div></div> <div><div>1. THIS PLAN SHOWS THE APPROXIMATE LOCATION OF UNDERGROUND UTILITIES (GAS, WATER, STORM SEWER, SANITARY SEWER, TELEPHONE, ELECTRIC, ETC.). THE PREPARER DOES NOT GUARANTEE THEIR ACCURACY OR CORRECTNESS. THE INFORMATION PROVIDED SHALL BE FIELD VERIFIED PRIOR TO CONSTRUCTION. THE CONTRACTOR SHALL BE RESPONSIBLE FOR MAINTAINING THE UTILITY AS WELL AS THE SERVICE LATERALS AT ALL TIMES DURING CONSTRUCTION. THE CONTRACTOR SHALL PRACTICE CARE DURING THE GRADING AND TRENCH EXCAVATION AND SHALL BE RESPONSIBLE FOR REPLACING ANY SERVICES THAT ARE DAMAGED DURING CONSTRUCTION AT THEIR EXPENSE.</div><div>2. PRIOR TO ANY EXCAVATION OVER AN EXISTING UTILITY LINE OR SERVICE, CONTRACTOR SHALL HAND EXCAVATE TO EXPOSE THE UTILITY AND DETERMINE LOCATION AND DEPTH. NOTIFY ENGINEER IMMEDIATELY OF ANY CONFLICTS.</div><div>3. TOPS OF EXISTING AND PROPOSED CASTING ELEVATIONS ARE SUBJECT TO FINAL ADJUSTMENTS AS APPROVED BY THE ENGINEER AND REQUIREMENTS OF UTILITY OWNER. THIS WORK WILL BE INCIDENTAL TO THE CONTRACT.</div><div>4. FORTY-EIGHT (48) HOURS BEFORE EXCAVATION IS TO COMMENCE, THE CONTRACTOR SHALL NOTIFY THE FOLLOWING AGENCIES: THE KENTUCKY UTILITY PROTECTION SERVICE AND ALL OTHER UTILITIES THAT MAY HAVE UNDERGROUND UTILITIES INVOLVING THIS PROJECT AND ARE NON-MEMBERS OF KENTUCKY UNDERGROUND PROTECTION.</div></div> <div><div>1. ALL MAINTENANCE OF TRAFFIC PROCEDURES SHALL MEET THE REQUIREMENT OF THE MANUAL OF UNIFORM TRAFFIC CONTROL DEVICES AND SECTION 112 OF KTC STANDARD SPECIFICATIONS. THE CONTRACTOR SHALL MAINTAIN ACCESS TO LOCAL TRAFFIC (ACCESS TO RESIDENCES WITHIN CONSTRUCTION LIMITS) AT ALL TIMES. THE CONTRACTOR SHALL PROVIDE SUFFICIENT SIGN, WARNING LIGHTS, BARRICADES, OR OTHER NECESSARY DEVICES MAKE THE SITE SAFE TO THE TRAVELING PUBLIC.</div><div>2. IT SHALL BE THE CONTRACTOR'S RESPONSIBILITY TO SUBMIT TO THE ENGINEER AND THE OWNER A TRAFFIC CONTROL PLAN FOR THIS PROJECT.</div><div>3. PRIOR TO ANY CONSTRUCTION, THE CONTRACTOR SHALL NOTIFY THE CITY OF LAKESIDE PARK AND THE LAKESIDE PARK POLICE DEPARTMENT. AT ALL TIMES, EMERGENCY VEHICLES SHALL BE GIVEN ACCESS.</div><div>4. RESIDENTS OF THE PROJECT AREA SHALL BE ALLOWED ACCESS TO THEIR PROPERTY AT ALL TIMES.</div><div>5. EACH DRIVEWAY SHALL BE ACCESSIBLE WHENEVER POSSIBLE. WHEN PORTLAND CEMENT CONCRETE CONSTRUCTION AFFECTS A DRIVEWAY, THE CONTRACTOR SHALL NOTIFY THE AFFECTED OWNERS 24 HOURS IN ADVANCE AND ADVISE THEM TO FIND ALTERNATIVE PARKING FOR A PERIOD OF AT LEAST 10 CALENDAR DAYS AFTER THE POUR. ALTERNATIVE PARKING SHALL INCLUDE "ON STREET" PARKING WITH ACCESS TO THE PROPERTY. TEMPORARY SIDEWALKS, ETC. WILL BE NECESSARY TO PREVENT PERSONS FROM WALKING IN MUD IN ORDER TO ENTER THEIR PROPERTY. TEMPORARY BRIDGES, RAILINGS ETC. WILL BECOME NECESSARY IN ORDER TO CROSS FORMED CURB LINES, EXCAVATED AREAS BEHIND CURB LINES AND WALKWAYS, ETC.</div><div>6. WORK ON JAMES AVENUE SHOULD BE SCHEDULED TO AVOID SCHOOL PICK UPS AND DROP OFFS.</div></div> <div><div>1. ALL STORM AND SANITARY ITEMS SHALL BE IN ACCORDANCE WITH THE LATEST SPECIFICATIONS AND DETAILS FROM SD1. CONCRETE AND METAL PIPE MATERIALS SHALL NOT BE USED UNLESS OTHERWISE SPECIFIED ON THESE PLANS.</div><div>2. CONTRACTOR SHALL BE REQUIRED TO MAINTAIN STORM AND SANITARY SEWER FLOW THROUGHOUT THE PROJECT, FOR THE DURATION OF CONSTRUCTION. ALL COST FOR THE ABOVE SHALL BE INCIDENTAL TO THE CONTRACT.</div><div>3. IF REQUIRED, CONTRACTOR SHALL BE RESPONSIBLE FOR CONTACTING AND SCHEDULING STORM AND SANITARY SEWER INSPECTIONS AS SET OUT IN THE PRECONSTRUCTION MEETING.</div><div>4. CONNECTIONS INTO EXISTING OR PROPOSED STORM OR SANITARY SEWER STRUCTURES OR PIPES SHALL BE COMPLETED BY A CERTIFIED TAPPER BY SD1.</div></div> <div><div>1. ALL WORK RELATING TO WATER MAINS OR WATER SERVICE LINES SHALL BE COMPLETED IN ACCORDANCE WITH THE RULES AND REGULATIONS OF THE NORTHERN KENTUCKY WATER DISTRICT (NKWD).</div><div>2. CONTRACTOR MAY NOT USE WATER FROM FIRE HYDRANTS WITHOUT PRIOR PERMISSION FROM NKWD</div></div> <div><div>1. ALL WORK RELATING TO GAS MAINS OR GAS SERVICE LINES SHALL BE COMPLETED IN ACCORDANCE WITH THE RULES AND REGULATIONS OF THE DUKE ENERGY</div></div> <div><div>1. ALL CONSTRUCTION SHALL CONFORM TO THESE PLANS AND SPECIFICATIONS, THE LATEST EDITION OF THE FORT THOMAS SUBDIVISION REGULATIONS AND THE KENTUCKY DEPARTMENT OF HIGHWAYS STANDARD SPECIFICATIONS FOR ROAD AND BRIDGE CONSTRUCTION.</div><div>2. EXPANSION MATERIAL SHALL BE FLEXIBLE FOAM MATERIAL, SUCH AS CERAMAR BY W.R. MEADOWS OR APPROVED EQUAL, INSTALLED IN AREAS OF CONCRETE WALK, DRIVES OR CURB/GUTTER ONLY AT THE FOLLOWING:<div><div>A. AT ALL FIXED OBJECTS (I.E. UTILITY COVERS, VALVES, MANHOLES, ETC.)</div><div>B. AT ALL RIGID STRUCTURES (I.E. DRIVES, CURBS, STEPS, ETC.) PAYMENT FOR THIS ITEM AND ZIP STRIPS INCLUDED IN THE PERTINENT CONCRETE PAVEMENT UNIT PRICE.</div><div>C. AT ALL STREET INTERSECTIONS AT THE POINT OF CURVATURE OF THE TURNING RADII ENTERING THE INTERSECTION.</div><div>D. NO CONCRETE SHALL BE LEFT ABOVE THE EXPANSION MATERIAL OR ACROSS THE JOINT AT ANY POINT. ANY CONCRETE SPANNING THE ENDS OF THE JOINT NEXT TO THE FORMS SHALL BE CAREFULLY CUT AWAY AFTER THE FORMS ARE REMOVED. BEFORE THE PAVEMENT IS OPENED TO TRAFFIC, THE GROOVE ABOVE THE EXPANSION JOINT MATERIAL SHALL BE CLEANED AND SEALED WITH JOINT SEALING MATERIAL.</div></div></div><div>3. A WATER MAIN PROJECT ON HOLLY WOODS AND PLEASANT WILL PRECEDE THIS PROJECT. ANTICIPATED COMPLETION OF WATER MAIN IS AUGUST 15, 2025. THE SIDEWALK AND CURB PROJECT WILL PRECEDE THIS PROJECT AND SHALL BE COMPLETED NO LATER THAN SEPTEMBER 15, 2025. ROADWAY RESURFACING PROJECT MAY NOT BEGIN BEFORE SEPTEMBER 15, 2025 UNLESS THE PRECEDING PROJECT HAVE COMPLETED EARLY AND SHALL BE SUBSTANTIALLY COMPLETE NO LATER THAN NOVEMBER 15, 2025.</div><div>4. DOWNSPOUT AND UNDERDRAIN CONSTRUCTION SHALL MEET THESE AND THE LATEST SPECIFICATION OF THE FORT THOMAS SUBDIVISION REGULATIONS, SD-1 REGULATIONS AND STANDARD DRAWINGS, AND DETAILS SHOWN ON THIS PLAN. BEDDING, BACKFILLING, JOINTS, EXCAVATION AND INSTALLATION SHALL BE INCLUDED IN THE COST PER FOOT OF PIPE. STORM SEWER, DOWNSPOUT AND UNDERDRAIN PIPE MATERIAL SHALL HAVE A MANNING'S "N" VALUE OF 0.013 OR LESS (UNLESS OTHERWISE SHOWN) AND BE RIGID / SMOOTH INTERIOR WALLED PVC SDR-35 PIPE, RIBBED PVC PIPE, A-2000 PVC PIPE, UNLESS OTHERWISE SHOWN.</div><div>5. ALL DISTURBED AREAS ARE TO BE RESTORED (SEEDED AND MULCHED) BY THE CONTRACTOR AND SHALL PROCEED WITH JOB PROGRESSION. THE CONTRACTOR SHALL ALSO BE RESPONSIBLE FOR REMOVING ANY EXCESS MATERIALS AT THE SITE AND MAINTAINING ALL SEEDED AND MULCHED AREAS UNTIL PROJECT COMPLETION AND FINAL INSPECTION PER KDOT SPEC. 212. A RESIDENTIAL YARD SHALL BE RESTORED WITHIN TWENTY-ONE (21) DAYS AFTER CONSTRUCTION.</div><div>6. ALL APPLICABLE RECOMMENDATIONS IN KENTUCKY'S BEST MANAGEMENT PRACTICES MANUAL SHALL BE FOLLOWED BY THE CONTRACTOR, INCLUDING SEEDING OF DISTURBED GROUND.</div><div>7. RIGHT-OF-WAY AND PROPERTY LINES SHOWN ARE PLOTTED FROM CAMPBELL COUNTY G.I.S. MAPPING AND ARE APPROXIMATE AND NOT THE RESULT OF A FIELD BOUNDARY SURVEY.</div><div>8. THE CONTRACTOR SHALL LIMIT THEIR WORK AREA TO THE EASEMENTS AND RIGHTS-OF-WAY SHOWN ON THESE PLANS UNLESS WRITTEN PERMISSION IS GIVEN BY THE PROPERTY OWNER AND APPROVED BY THE CITY OF FORT THOMAS.</div><div>9. ALL OSHA, STATE AND LOCAL SAFETY REGULATIONS SHALL BE FOLLOWED DURING CONSTRUCTION.</div><div>10. RELOCATION OR REINSTALLATION OF EXISTING MAIL BOXES, FENCES, PRIVATE LANDSCAPE LIGHTS, PRIVATE SIGNS, STREET SIGNS, RESTORATION OF LANDSCAPING AND TREATMENT OF EXISTING WALLS WHERE A PORTION HAS BEEN REMOVED SHALL BE INCIDENTAL TO CLEARING AND GRUBBING.</div><div>11. NO CONSTRUCTION SHALL COMMENCE UNTIL ALL CAMPBELL COUNTY AND THE CITY OF FORT THOMAS PERMITS HAVE BEEN ISSUED AS REQUIRED.</div><div>12. THE CONTRACTOR SHALL COORDINATE ALL WORK WITHIN THE PUBLIC RIGHT OF WAY WITH THE CITY OF FORT THOMAS. LOCAL TRAFFIC MUST BE MAINTAINED AT ALL TIMES DURING CONSTRUCTION UNLESS OTHERWISE NOTED IN THESE PLANS.</div><div>13. ADDITIONAL BMP'S AND EROSION AND SEDIMENT CONTROL MEASURES MAY BE REQUIRED AS DEEMED NECESSARY. ALL COST FOR ABOVE SHALL BE INCLUDED IN LUMP SUM BID FOR EROSION CONTROL AND WATER POLLUTION CONTROL.</div><div>14. LIMITS OF DRIVEWAY APRON & SIDEWALK REPLACEMENT TO BE MARKED IN THE FIELD BY THE ENGINEER. ADDITIONAL DRIVEWAY & SIDEWALK REPLACEMENTS, NOT SHOWN ON THE PLANS MAY BE REQUIRED BY THE ENGINEER.</div></div> <div><div>1. THIS PLAN SHOWS THE APPROXIMATE LOCATION OF UNDERGROUND UTILITIES (GAS, WATER, STORM SEWER, SANITARY SEWER, TELEPHONE, ELECTRIC, ETC.). THE PREPARER DOES NOT GUARANTEE THEIR ACCURACY OR CORRECTNESS. THE INFORMATION PROVIDED SHALL BE FIELD VERIFIED PRIOR TO CONSTRUCTION. THE CONTRACTOR SHALL BE RESPONSIBLE FOR MAINTAINING THE UTILITY AS WELL AS THE SERVICE LATERALS AT ALL TIMES DURING CONSTRUCTION. THE CONTRACTOR SHALL PRACTICE CARE DURING THE GRADING AND TRENCH EXCAVATION AND SHALL BE RESPONSIBLE FOR REPLACING ANY SERVICES THAT ARE DAMAGED DURING CONSTRUCTION AT THEIR EXPENSE.</div><div>2. PRIOR TO ANY EXCAVATION OVER AN EXISTING UTILITY LINE OR SERVICE, CONTRACTOR SHALL HAND EXCAVATE TO EXPOSE THE UTILITY AND DETERMINE LOCATION AND DEPTH. NOTIFY ENGINEER IMMEDIATELY OF ANY CONFLICTS.</div><div>3. TOPS OF EXISTING AND PROPOSED CASTING ELEVATIONS ARE SUBJECT TO FINAL ADJUSTMENTS AS APPROVED BY THE ENGINEER AND REQUIREMENTS OF UTILITY OWNER. THIS WORK WILL BE INCIDENTAL TO THE CONTRACT.</div><div>4. FORTY-EIGHT (48) HOURS BEFORE EXCAVATION IS TO COMMENCE, THE CONTRACTOR SHALL NOTIFY THE FOLLOWING AGENCIES: THE KENTUCKY UTILITY PROTECTION SERVICE AND ALL OTHER UTILITIES THAT MAY HAVE UNDERGROUND UTILITIES INVOLVING THIS PROJECT AND ARE NON-MEMBERS OF KENTUCKY UNDERGROUND PROTECTION.</div></div> <div><div>1. ALL MAINTENANCE OF TRAFFIC PROCEDURES SHALL MEET THE REQUIREMENT OF THE MANUAL OF UNIFORM TRAFFIC CONTROL DEVICES AND SECTION 112 OF KTC STANDARD SPECIFICATIONS. THE CONTRACTOR SHALL MAINTAIN ACCESS TO LOCAL TRAFFIC (ACCESS TO RESIDENCES WITHIN CONSTRUCTION LIMITS) AT ALL TIMES. THE CONTRACTOR SHALL PROVIDE SUFFICIENT SIGN, WARNING LIGHTS, BARRICADES, OR OTHER NECESSARY DEVICES MAKE THE SITE SAFE TO THE TRAVELING PUBLIC.</div><div>2. IT SHALL BE THE CONTRACTOR'S RESPONSIBILITY TO SUBMIT TO THE ENGINEER AND THE OWNER A TRAFFIC CONTROL PLAN FOR THIS PROJECT.</div><div>3. PRIOR TO ANY CONSTRUCTION, THE CONTRACTOR SHALL NOTIFY THE CITY OF LAKESIDE PARK AND THE LAKESIDE PARK POLICE DEPARTMENT. AT ALL TIMES, EMERGENCY VEHICLES SHALL BE GIVEN ACCESS.</div><div>4. RESIDENTS OF THE PROJECT AREA SHALL BE ALLOWED ACCESS TO THEIR PROPERTY AT ALL TIMES.</div><div>5. EACH DRIVEWAY SHALL BE ACCESSIBLE WHENEVER POSSIBLE. WHEN PORTLAND CEMENT CONCRETE CONSTRUCTION AFFECTS A DRIVEWAY, THE CONTRACTOR SHALL NOTIFY THE AFFECTED OWNERS 24 HOURS IN ADVANCE AND ADVISE THEM TO FIND ALTERNATIVE PARKING FOR A PERIOD OF AT LEAST 10 CALENDAR DAYS AFTER THE POUR. ALTERNATIVE PARKING SHALL INCLUDE "ON STREET" PARKING WITH ACCESS TO THE PROPERTY. TEMPORARY SIDEWALKS, ETC. WILL BE NECESSARY TO PREVENT PERSONS FROM WALKING IN MUD IN ORDER TO ENTER THEIR PROPERTY. TEMPORARY BRIDGES, RAILINGS ETC. WILL BECOME NECESSARY IN ORDER TO CROSS FORMED CURB LINES, EXCAVATED AREAS BEHIND CURB LINES AND WALKWAYS, ETC.</div><div>6. WORK ON JAMES AVENUE SHOULD BE SCHEDULED TO AVOID SCHOOL PICK UPS AND DROP OFFS.</div></div> <div><div>1. ALL STORM AND SANITARY ITEMS SHALL BE IN ACCORDANCE WITH THE LATEST SPECIFICATIONS AND DETAILS FROM SD1. CONCRETE AND METAL PIPE MATERIALS SHALL NOT BE USED UNLESS OTHERWISE SPECIFIED ON THESE PLANS.</div><div>2. CONTRACTOR SHALL BE REQUIRED TO MAINTAIN STORM AND SANITARY SEWER FLOW THROUGHOUT THE PROJECT, FOR THE DURATION OF CONSTRUCTION. ALL COST FOR THE ABOVE SHALL BE INCIDENTAL TO THE CONTRACT.</div><div>3. IF REQUIRED, CONTRACTOR SHALL BE RESPONSIBLE FOR CONTACTING AND SCHEDULING STORM AND SANITARY SEWER INSPECTIONS AS SET OUT IN THE PRECONSTRUCTION MEETING.</div><div>4. CONNECTIONS INTO EXISTING OR PROPOSED STORM OR SANITARY SEWER STRUCTURES OR PIPES SHALL BE COMPLETED BY A CERTIFIED TAPPER BY SD1.</div></div> <div><div>1. ALL WORK RELATING TO WATER MAINS OR WATER SERVICE LINES SHALL BE COMPLETED IN ACCORDANCE WITH THE RULES AND REGULATIONS OF THE NORTHERN KENTUCKY WATER DISTRICT (NKWD).</div><div>2. CONTRACTOR MAY NOT USE WATER FROM FIRE HYDRANTS WITHOUT PRIOR PERMISSION FROM NKWD</div></div> <div><div>1. ALL WORK RELATING TO GAS MAINS OR GAS SERVICE LINES SHALL BE COMPLETED IN ACCORDANCE WITH THE RULES AND REGULATIONS OF THE DUKE ENERGY</div></div> <div><div>1. ALL CONSTRUCTION SHALL CONFORM TO THESE PLANS AND SPECIFICATIONS, THE LATEST EDITION OF THE FORT THOMAS SUBDIVISION REGULATIONS AND THE KENTUCKY DEPARTMENT OF HIGHWAYS STANDARD SPECIFICATIONS FOR ROAD AND BRIDGE CONSTRUCTION.</div><div>2. EXPANSION MATERIAL SHALL BE FLEXIBLE FOAM MATERIAL, SUCH AS CERAMAR BY W.R. MEADOWS OR APPROVED EQUAL, INSTALLED IN AREAS OF CONCRETE WALK, DRIVES OR CURB/GUTTER ONLY AT THE FOLLOWING:<div><div>A. AT ALL FIXED OBJECTS (I.E. UTILITY COVERS, VALVES, MANHOLES, ETC.)</div><div>B. AT ALL RIGID STRUCTURES (I.E. DRIVES, CURBS, STEPS, ETC.) PAYMENT FOR THIS ITEM AND ZIP STRIPS INCLUDED IN THE PERTINENT CONCRETE PAVEMENT UNIT PRICE.</div><div>C. AT ALL STREET INTERSECTIONS AT THE POINT OF CURVATURE OF THE TURNING RADII ENTERING THE INTERSECTION.</div><div>D. NO CONCRETE SHALL BE LEFT ABOVE THE EXPANSION MATERIAL OR ACROSS THE JOINT AT ANY POINT. ANY CONCRETE SPANNING THE ENDS OF THE JOINT NEXT TO THE FORMS SHALL BE CAREFULLY CUT AWAY AFTER THE FORMS ARE REMOVED. BEFORE THE PAVEMENT IS OPENED TO TRAFFIC, THE GROOVE ABOVE THE EXPANSION JOINT MATERIAL SHALL BE CLEANED AND SEALED WITH JOINT SEALING MATERIAL.</div></div></div><div>3. A WATER MAIN PROJECT ON HOLLY WOODS AND PLEASANT WILL PRECEDE THIS PROJECT. ANTICIPATED COMPLETION OF WATER MAIN IS AUGUST 15, 2025. THE SIDEWALK AND CURB PROJECT WILL PRECEDE THIS PROJECT AND SHALL BE COMPLETED NO LATER THAN SEPTEMBER 15, 2025. ROADWAY RESURFACING PROJECT MAY NOT BEGIN BEFORE SEPTEMBER 15, 2025 UNLESS THE PRECEDING PROJECT HAVE COMPLETED EARLY AND SHALL BE SUBSTANTIALLY COMPLETE NO LATER THAN NOVEMBER 15, 2025.</div><div>4. DOWNSPOUT AND UNDERDRAIN CONSTRUCTION SHALL MEET THESE AND THE LATEST SPECIFICATION OF THE FORT THOMAS SUBDIVISION REGULATIONS, SD-1 REGULATIONS AND STANDARD DRAWINGS, AND DETAILS SHOWN ON THIS PLAN. BEDDING, BACKFILLING, JOINTS, EXCAVATION AND INSTALLATION SHALL BE INCLUDED IN THE COST PER FOOT OF PIPE. STORM SEWER, DOWNSPOUT AND UNDERDRAIN PIPE MATERIAL SHALL HAVE A MANNING'S "N" VALUE OF 0.013 OR LESS (UNLESS OTHERWISE SHOWN) AND BE RIGID / SMOOTH INTERIOR WALLED PVC SDR-35 PIPE, RIBBED PVC PIPE, A-2000 PVC PIPE, UNLESS OTHERWISE SHOWN.</div><div>5. ALL DISTURBED AREAS ARE TO BE RESTORED (SEEDED AND MULCHED) BY THE CONTRACTOR AND SHALL PROCEED WITH JOB PROGRESSION. THE CONTRACTOR SHALL ALSO BE RESPONSIBLE FOR REMOVING ANY EXCESS MATERIALS AT THE SITE AND MAINTAINING ALL SEEDED AND MULCHED AREAS UNTIL PROJECT COMPLETION AND FINAL INSPECTION PER KDOT SPEC. 212. A RESIDENTIAL YARD SHALL BE RESTORED WITHIN TWENTY-ONE (21) DAYS AFTER CONSTRUCTION.</div><div>6. ALL APPLICABLE RECOMMENDATIONS IN KENTUCKY'S BEST MANAGEMENT PRACTICES MANUAL SHALL BE FOLLOWED BY THE CONTRACTOR, INCLUDING SEEDING OF DISTURBED GROUND.</div><div>7. RIGHT-OF-WAY AND PROPERTY LINES SHOWN ARE PLOTTED FROM CAMPBELL COUNTY G.I.S. MAPPING AND ARE APPROXIMATE AND NOT THE RESULT OF A FIELD BOUNDARY SURVEY.</div><div>8. THE CONTRACTOR SHALL LIMIT THEIR WORK AREA TO THE EASEMENTS AND RIGHTS-OF-WAY SHOWN ON THESE PLANS UNLESS WRITTEN PERMISSION IS GIVEN BY THE PROPERTY OWNER AND APPROVED BY THE CITY OF FORT THOMAS.</div><div>9. ALL OSHA, STATE AND LOCAL SAFETY REGULATIONS SHALL BE FOLLOWED DURING CONSTRUCTION.</div><div>10. RELOCATION OR REINSTALLATION OF EXISTING MAIL BOXES, FENCES, PRIVATE LANDSCAPE LIGHTS, PRIVATE SIGNS, STREET SIGNS, RESTORATION OF LANDSCAPING AND TREATMENT OF EXISTING WALLS WHERE A PORTION HAS BEEN REMOVED SHALL BE INCIDENTAL TO CLEARING AND GRUBBING.</div><div>11. NO CONSTRUCTION SHALL COMMENCE UNTIL ALL CAMPBELL COUNTY AND THE CITY OF FORT THOMAS PERMITS HAVE BEEN ISSUED AS REQUIRED.</div><div>12. THE CONTRACTOR SHALL COORDINATE ALL WORK WITHIN THE PUBLIC RIGHT OF WAY WITH THE CITY OF FORT THOMAS. LOCAL TRAFFIC MUST BE MAINTAINED AT ALL TIMES DURING CONSTRUCTION UNLESS OTHERWISE NOTED IN THESE PLANS.</div><div>13. ADDITIONAL BMP'S AND EROSION AND SEDIMENT CONTROL MEASURES MAY BE REQUIRED AS DEEMED NECESSARY. ALL COST FOR ABOVE SHALL BE INCLUDED IN LUMP SUM BID FOR EROSION CONTROL AND WATER POLLUTION CONTROL.</div><div>14. LIMITS OF DRIVEWAY APRON & SIDEWALK REPLACEMENT TO BE MARKED IN THE FIELD BY THE ENGINEER. ADDITIONAL DRIVEWAY & SIDEWALK REPLACEMENTS, NOT SHOWN ON THE PLANS MAY BE REQUIRED BY THE ENGINEER.</div></div> <div><div>1. THIS PLAN SHOWS THE APPROXIMATE LOCATION OF UNDERGROUND UTILITIES (GAS, WATER, STORM SEWER, SANITARY SEWER, TELEPHONE, ELECTRIC, ETC.). THE PREPARER DOES NOT GUARANTEE THEIR ACCURACY OR CORRECTNESS. THE INFORMATION PROVIDED SHALL BE FIELD VERIFIED PRIOR TO CONSTRUCTION. THE CONTRACTOR SHALL BE RESPONSIBLE FOR MAINTAINING THE UTILITY AS WELL AS THE SERVICE LATERALS AT ALL TIMES DURING CONSTRUCTION. THE CONTRACTOR SHALL PRACTICE CARE DURING THE GRADING AND TRENCH EXCAVATION AND SHALL BE RESPONSIBLE FOR REPLACING ANY SERVICES THAT ARE DAMAGED DURING CONSTRUCTION AT THEIR EXPENSE.</div><div>2. PRIOR TO ANY EXCAVATION OVER AN EXISTING UTILITY LINE OR SERVICE, CONTRACTOR SHALL HAND EXCAVATE TO EXPOSE THE UTILITY AND DETERMINE LOCATION AND DEPTH. NOTIFY ENGINEER IMMEDIATELY OF ANY CONFLICTS.</div><div>3. TOPS OF EXISTING AND PROPOSED CASTING ELEVATIONS ARE SUBJECT TO FINAL ADJUSTMENTS AS APPROVED BY THE ENGINEER AND REQUIREMENTS OF UTILITY OWNER. THIS WORK WILL BE INCIDENTAL TO THE CONTRACT.</div><div>4. FORTY-EIGHT (48) HOURS BEFORE EXCAVATION IS TO COMMENCE, THE CONTRACTOR SHALL NOTIFY THE FOLLOWING AGENCIES: THE KENTUCKY UTILITY PROTECTION SERVICE AND ALL OTHER UTILITIES THAT MAY HAVE UNDERGROUND UTILITIES INVOLVING THIS PROJECT AND ARE NON-MEMBERS OF KENTUCKY UNDERGROUND PROTECTION.</div></div> <div><div>1. ALL MAINTENANCE OF TRAFFIC PROCEDURES SHALL MEET THE REQUIREMENT OF THE MANUAL OF UNIFORM TRAFFIC CONTROL DEVICES AND SECTION 112 OF KTC STANDARD SPECIFICATIONS. THE CONTRACTOR SHALL MAINTAIN ACCESS TO LOCAL TRAFFIC (ACCESS TO RESIDENCES WITHIN CONSTRUCTION LIMITS) AT ALL TIMES. THE CONTRACTOR SHALL PROVIDE SUFFICIENT SIGN, WARNING LIGHTS, BARRICADES, OR OTHER NECESSARY DEVICES MAKE THE SITE SAFE TO THE TRAVELING PUBLIC.</div><div>2. IT SHALL BE THE CONTRACTOR'S RESPONSIBILITY TO SUBMIT TO THE ENGINEER AND THE OWNER A TRAFFIC CONTROL PLAN FOR THIS PROJECT.</div><div>3. PRIOR TO ANY CONSTRUCTION, THE CONTRACTOR SHALL NOTIFY THE CITY OF LAKESIDE PARK AND THE LAKESIDE PARK POLICE DEPARTMENT. AT ALL TIMES, EMERGENCY VEHICLES SHALL BE GIVEN ACCESS.</div><div>4. RESIDENTS OF THE PROJECT AREA SHALL BE ALLOWED ACCESS TO THEIR PROPERTY AT ALL TIMES.</div><div>5. EACH DRIVEWAY SHALL BE ACCESSIBLE WHENEVER POSSIBLE. WHEN PORTLAND CEMENT CONCRETE CONSTRUCTION AFFECTS A DRIVEWAY, THE CONTRACTOR SHALL NOTIFY THE AFFECTED OWNERS 24 HOURS IN ADVANCE AND ADVISE THEM TO FIND ALTERNATIVE PARKING FOR A PERIOD OF AT LEAST 10 CALENDAR DAYS AFTER THE POUR. ALTERNATIVE PARKING SHALL INCLUDE "ON STREET" PARKING WITH ACCESS TO THE PROPERTY. TEMPORARY SIDEWALKS, ETC. WILL BE NECESSARY TO PREVENT PERSONS FROM WALKING IN MUD IN ORDER TO ENTER THEIR PROPERTY. TEMPORARY BRIDGES, RAILINGS ETC. WILL BECOME NECESSARY IN ORDER TO CROSS FORMED CURB LINES, EXCAVATED AREAS BEHIND CURB LINES AND WALKWAYS, ETC.</div><div>6. WORK ON JAMES AVENUE SHOULD BE SCHEDULED TO AVOID SCHOOL PICK UPS AND DROP OFFS.</div></div> <div><div>1. ALL STORM AND SANITARY ITEMS SHALL BE IN ACCORDANCE WITH THE LATEST SPECIFICATIONS AND DETAILS FROM SD1. CONCRETE AND METAL PIPE MATERIALS SHALL NOT BE USED UNLESS OTHERWISE SPECIFIED ON THESE PLANS.</div><div>2. CONTRACTOR SHALL BE REQUIRED TO MAINTAIN STORM AND SANITARY SEWER FLOW THROUGHOUT THE PROJECT, FOR THE DURATION OF CONSTRUCTION. ALL COST FOR THE ABOVE SHALL BE INCIDENTAL TO THE CONTRACT.</div><div>3. IF REQUIRED, CONTRACTOR SHALL BE RESPONSIBLE FOR CONTACTING AND SCHEDULING STORM AND SANITARY SEWER INSPECTIONS AS SET OUT IN THE PRECONSTRUCTION MEETING.</div><div>4. CONNECTIONS INTO EXISTING OR PROPOSED STORM OR SANITARY SEWER STRUCTURES OR PIPES SHALL BE COMPLETED BY A CERTIFIED TAPPER BY SD1.</div></div> <div><div>1. ALL WORK RELATING TO WATER MAINS OR WATER SERVICE LINES SHALL BE COMPLETED IN ACCORDANCE WITH THE RULES AND REGULATIONS OF THE NORTHERN KENTUCKY WATER DISTRICT (NKWD).</div><div>2. CONTRACTOR MAY NOT USE WATER FROM FIRE HYDRANTS WITHOUT PRIOR PERMISSION FROM NKWD</div></div> <div><div>1. ALL WORK RELATING TO GAS MAINS OR GAS SERVICE LINES SHALL BE COMPLETED IN ACCORDANCE WITH THE RULES AND REGULATIONS OF THE DUKE ENERGY</div></div> <div><div>1. ALL CONSTRUCTION SHALL CONFORM TO THESE PLANS AND SPECIFICATIONS, THE LATEST EDITION OF THE FORT THOMAS SUBDIVISION REGULATIONS AND THE KENTUCKY DEPARTMENT OF HIGHWAYS STANDARD SPECIFICATIONS FOR ROAD AND BRIDGE CONSTRUCTION.</div><div>2. EXPANSION MATERIAL SHALL BE FLEXIBLE FOAM MATERIAL, SUCH AS CERAMAR BY W.R. MEADOWS OR APPROVED EQUAL, INSTALLED IN AREAS OF CONCRETE WALK, DRIVES OR CURB/GUTTER ONLY AT THE FOLLOWING:<div><div>A. AT ALL FIXED OBJECTS (I.E. UTILITY COVERS, VALVES, MANHOLES, ETC.)</div><div>B. AT ALL RIGID STRUCTURES (I.E. DRIVES, CURBS, STEPS, ETC.) PAYMENT FOR THIS ITEM AND ZIP STRIPS INCLUDED IN THE PERTINENT CONCRETE PAVEMENT UNIT PRICE.</div><div>C. AT ALL STREET INTERSECTIONS AT THE POINT OF CURVATURE OF THE TURNING RADII ENTERING THE INTERSECTION.</div><div>D. NO CONCRETE SHALL BE LEFT ABOVE THE EXPANSION MATERIAL OR ACROSS THE JOINT AT ANY POINT. ANY CONCRETE SPANNING THE ENDS OF THE JOINT NEXT TO THE FORMS SHALL BE CAREFULLY CUT AWAY AFTER THE FORMS ARE REMOVED. BEFORE THE PAVEMENT IS OPENED TO TRAFFIC, THE GROOVE ABOVE THE EXPANSION JOINT MATERIAL SHALL BE CLEANED AND SEALED WITH JOINT SEALING MATERIAL.</div></div></div><div>3. A WATER MAIN PROJECT ON HOLLY WOODS AND PLEASANT WILL PRECEDE THIS PROJECT. ANTICIPATED COMPLETION OF WATER MAIN IS AUGUST 15, 2025. THE SIDEWALK AND CURB PROJECT WILL PRECEDE THIS PROJECT AND SHALL BE COMPLETED NO LATER THAN SEPTEMBER 15, 2025. ROADWAY RESURFACING PROJECT MAY NOT BEGIN BEFORE SEPTEMBER 15, 2025 UNLESS THE PRECEDING PROJECT HAVE COMPLETED EARLY AND SHALL BE SUBSTANTIALLY COMPLETE NO LATER THAN NOVEMBER 15, 2025.</div><div>4. DOWNSPOUT AND UNDERDRAIN CONSTRUCTION SHALL MEET THESE AND THE LATEST SPECIFICATION OF THE FORT THOMAS SUBDIVISION REGULATIONS, SD-1 REGULATIONS AND STANDARD DRAWINGS, AND DETAILS SHOWN ON THIS PLAN. BEDDING, BACKFILLING, JOINTS, EXCAVATION AND INSTALLATION SHALL BE INCLUDED IN THE COST PER FOOT OF PIPE. STORM SEWER, DOWNSPOUT AND UNDERDRAIN PIPE MATERIAL SHALL HAVE A MANNING'S "N" VALUE OF 0.013 OR LESS (UNLESS OTHERWISE SHOWN) AND BE RIGID / SMOOTH INTERIOR WALLED PVC SDR-35 PIPE, RIBBED PVC PIPE, A-2000 PVC PIPE, UNLESS OTHERWISE SHOWN.</div><div>5. ALL DISTURBED AREAS ARE TO BE RESTORED (SEEDED AND MULCHED) BY THE CONTRACTOR AND SHALL PROCEED WITH JOB PROGRESSION. THE CONTRACTOR SHALL ALSO BE RESPONSIBLE FOR REMOVING ANY EXCESS MATERIALS AT THE SITE AND MAINTAINING ALL SEEDED AND MULCHED AREAS UNTIL PROJECT COMPLETION AND FINAL INSPECTION PER KDOT SPEC. 212. A RESIDENTIAL YARD SHALL BE RESTORED WITHIN TWENTY-ONE (21) DAYS AFTER CONSTRUCTION.</div><div>6. ALL APPLICABLE RECOMMENDATIONS IN KENTUCKY'S BEST MANAGEMENT PRACTICES MANUAL SHALL BE FOLLOWED BY THE CONTRACTOR, INCLUDING SEEDING OF DISTURBED GROUND.</div><div>7. RIGHT-OF-WAY AND PROPERTY LINES SHOWN ARE PLOTTED FROM CAMPBELL COUNTY G.I.S. MAPPING AND ARE APPROXIMATE AND NOT THE RESULT OF A FIELD BOUNDARY SURVEY.</div><div>8. THE CONTRACTOR SHALL LIMIT THEIR WORK AREA TO THE EASEMENTS AND RIGHTS-OF-WAY SHOWN ON THESE PLANS UNLESS WRITTEN PERMISSION IS GIVEN BY THE PROPERTY OWNER AND APPROVED BY THE CITY OF FORT THOMAS.</div><div>9. ALL OSHA, STATE AND LOCAL SAFETY REGULATIONS SHALL BE FOLLOWED DURING CONSTRUCTION.</div><div>10. RELOCATION OR REINSTALLATION OF EXISTING MAIL BOXES, FENCES, PRIVATE LANDSCAPE LIGHTS, PRIVATE SIGNS, STREET SIGNS, RESTORATION OF LANDSCAPING AND TREATMENT OF EXISTING WALLS WHERE A PORTION HAS BEEN REMOVED SHALL BE INCIDENTAL TO CLEARING AND GRUBBING.</div><div>11. NO CONSTRUCTION SHALL COMMENCE UNTIL ALL CAMPBELL COUNTY AND THE CITY OF FORT THOMAS PERMITS HAVE BEEN ISSUED AS REQUIRED.</div><div>12. THE CONTRACTOR SHALL COORDINATE ALL WORK WITHIN THE PUBLIC RIGHT OF WAY WITH THE CITY OF FORT THOMAS. LOCAL TRAFFIC MUST BE MAINTAINED AT ALL TIMES DURING CONSTRUCTION UNLESS OTHERWISE NOTED IN THESE PLANS.</div><div>13. ADDITIONAL BMP'S AND EROSION AND SEDIMENT CONTROL MEASURES MAY BE REQUIRED AS DEEMED NECESSARY. ALL COST FOR ABOVE SHALL BE INCLUDED IN LUMP SUM BID FOR EROSION CONTROL AND WATER POLLUTION CONTROL.</div><div>14. LIMITS OF DRIVEWAY APRON & SIDEWALK REPLACEMENT TO BE MARKED IN THE FIELD BY THE ENGINEER. ADDITIONAL DRIVEWAY & SIDEWALK REPLACEMENTS, NOT SHOWN ON THE PLANS MAY BE REQUIRED BY THE ENGINEER.</div></div> <div><div>1. THIS PLAN SHOWS THE APPROXIMATE LOCATION OF UNDERGROUND UTILITIES (GAS, WATER, STORM SEWER, SANITARY SEWER, TELEPHONE, ELECTRIC, ETC.). THE PREPARER DOES NOT GUARANTEE THEIR ACCURACY OR CORRECTNESS. THE INFORMATION PROVIDED SHALL BE FIELD VERIFIED PRIOR TO CONSTRUCTION. THE CONTRACTOR SHALL BE RESPONSIBLE FOR MAINTAINING THE UTILITY AS WELL AS THE SERVICE LATERALS AT ALL TIMES DURING CONSTRUCTION. THE CONTRACTOR SHALL PRACTICE CARE DURING THE GRADING AND TRENCH EXCAVATION AND SHALL BE RESPONSIBLE FOR REPLACING ANY SERVICES THAT ARE DAMAGED DURING CONSTRUCTION AT THEIR EXPENSE.</div><div>2. PRIOR TO ANY EXCAVATION OVER AN EXISTING UTILITY LINE OR SERVICE, CONTRACTOR SHALL HAND EXCAVATE TO EXPOSE THE UTILITY AND DETERMINE LOCATION AND DEPTH. NOTIFY ENGINEER IMMEDIATELY OF ANY CONFLICTS.</div><div>3. TOPS OF EXISTING AND PROPOSED CASTING ELEVATIONS ARE SUBJECT TO FINAL ADJUSTMENTS AS APPROVED BY THE ENGINEER AND REQUIREMENTS OF UTILITY OWNER. THIS WORK WILL BE INCIDENTAL TO THE CONTRACT.</div><div>4. FORTY-EIGHT (48) HOURS BEFORE EXCAVATION IS TO COMMENCE, THE CONTRACTOR SHALL NOTIFY THE FOLLOWING AGENCIES: THE KENTUCKY UTILITY PROTECTION SERVICE AND ALL OTHER UTILITIES THAT MAY HAVE UNDERGROUND UTILITIES INVOLVING THIS PROJECT AND ARE NON-MEMBERS OF KENTUCKY UNDERGROUND PROTECTION.</div></div> <div><div>1. ALL MAINTENANCE OF TRAFFIC PROCEDURES SHALL MEET THE REQUIREMENT OF THE MANUAL OF UNIFORM TRAFFIC CONTROL DEVICES AND SECTION 112 OF KTC STANDARD SPECIFICATIONS. THE CONTRACTOR SHALL MAINTAIN ACCESS TO LOCAL TRAFFIC (ACCESS TO RESIDENCES WITHIN CONSTRUCTION LIMITS) AT ALL TIMES. THE CONTRACTOR SHALL PROVIDE SUFFICIENT SIGN, WARNING LIGHTS, BARRICADES, OR OTHER NECESSARY DEVICES MAKE THE SITE SAFE TO THE TRAVELING PUBLIC.</div><div>2. IT SHALL BE THE CONTRACTOR'S RESPONSIBILITY TO SUBMIT TO THE ENGINEER AND THE OWNER A TRAFFIC CONTROL PLAN FOR THIS PROJECT.</div><div>3. PRIOR TO ANY CONSTRUCTION, THE CONTRACTOR SHALL NOTIFY THE CITY OF LAKESIDE PARK AND THE LAKESIDE PARK POLICE DEPARTMENT. AT ALL TIMES, EMERGENCY VEHICLES SHALL BE GIVEN ACCESS.</div><div>4. RESIDENTS OF THE PROJECT AREA SHALL BE ALLOWED ACCESS TO THEIR PROPERTY AT ALL TIMES.</div><div>5. EACH DRIVEWAY SHALL BE ACCESSIBLE WHENEVER POSSIBLE. WHEN PORTLAND CEMENT CONCRETE CONSTRUCTION AFFECTS A DRIVEWAY, THE CONTRACTOR SHALL NOTIFY THE AFFECTED OWNERS 24 HOURS IN ADVANCE AND ADVISE THEM TO FIND ALTERNATIVE PARKING FOR A PERIOD OF AT LEAST 10 CALENDAR DAYS AFTER THE POUR. ALTERNATIVE PARKING SHALL INCLUDE "ON STREET" PARKING WITH ACCESS TO THE PROPERTY. TEMPORARY SIDEWALKS, ETC. WILL BE NECESSARY TO PREVENT PERSONS FROM WALKING IN MUD IN ORDER TO ENTER THEIR PROPERTY. TEMPORARY BRIDGES, RAILINGS ETC. WILL BECOME NECESSARY IN ORDER TO CROSS FORMED CURB LINES, EXCAVATED AREAS BEHIND CURB LINES AND WALKWAYS, ETC.</div><div>6. WORK ON JAMES AVENUE SHOULD BE SCHEDULED TO AVOID SCHOOL PICK UPS AND DROP OFFS.</div></div> <div><div>1. ALL STORM AND SANITARY ITEMS SHALL BE IN ACCORDANCE WITH THE LATEST SPECIFICATIONS AND DETAILS FROM SD1. CONCRETE AND METAL PIPE MATERIALS SHALL NOT BE USED UNLESS OTHERWISE SPECIFIED ON THESE PLANS.</div><div>2. CONTRACTOR SHALL BE REQUIRED TO MAINTAIN STORM AND SANITARY SEWER FLOW THROUGHOUT THE PROJECT, FOR THE DURATION OF CONSTRUCTION. ALL COST FOR THE ABOVE SHALL BE INCIDENTAL TO THE CONTRACT.</div><div>3. IF REQUIRED, CONTRACTOR SHALL BE RESPONSIBLE FOR CONTACTING AND SCHEDULING STORM AND SANITARY SEWER INSPECTIONS AS SET OUT IN THE PRECONSTRUCTION MEETING.</div><div>4. CONNECTIONS INTO EXISTING OR PROPOSED STORM OR SANITARY SEWER STRUCTURES OR PIPES SHALL BE COMPLETED BY A CERTIFIED TAPPER BY SD1.</div></div> <div><div>1. ALL WORK RELATING TO WATER MAINS OR WATER SERVICE LINES SHALL BE COMPLETED IN ACCORDANCE WITH THE RULES AND REGULATIONS OF THE NORTHERN KENTUCKY WATER DISTRICT (NKWD).</div><div>2. CONTRACTOR MAY NOT USE WATER FROM FIRE HYDRANTS WITHOUT PRIOR PERMISSION FROM NKWD</div></div> <div><div>1. ALL WORK RELATING TO GAS MAINS OR GAS SERVICE LINES SHALL BE COMPLETED IN ACCORDANCE WITH THE RULES AND REGULATIONS OF THE DUKE ENERGY</div></div>					



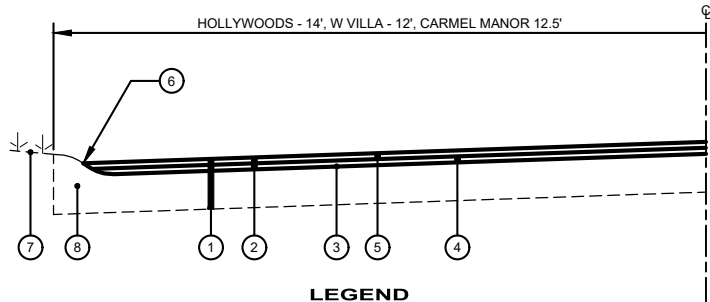
2161 CHAMBER CENTER DRIVE
FORT MITCHELL, KENTUCKY 41017
TEL: (609) 525-0944
WWW.VERDANTAS.COM

DATE	REVISION	NO	BID	ISSUED FOR:	ISSUE DATE:	SCALE:	DESIGNED BY:	DRAWN BY:	CHECKED BY:
					05/01/2025	AS SHOWN	RSEI	RSEI	FTWE

FORT THOMAS 2025 STREET RESURFACING PROGRAM
CITY OF FORT THOMAS
CAMPBELL COUNTY, KENTUCKY

NOTES & LEGEND

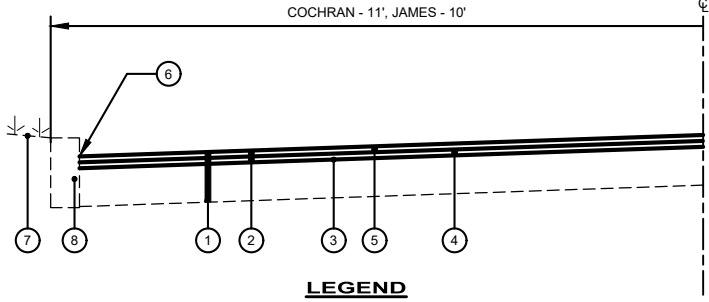
PROJECT NO. 242645-A	
DISCIPLINE CIVIL	
SHEET NAME NOTES	
SHEET 2	OF 13



- LEGEND**
- 1 EXISTING PAVEMENT (CONCRETE OR ASPHALT) WITH ASPHALT OVERLAY
 - 2 ITEM 408 - ASPHALT MILLING (2" ±) - (IF STREET HAS CONCRETE BASE, REMOVE TO EXISTING CONCRETE SURFACE)
 - 3 ITEM 406 - TACK COAT @ 0.1 GAL/SY (INCIDENTAL TO ASPHALT PAVEMENT)
 - 4 ITEM 402/403 - BITUMINOUS ASPHALT PAVEMENT LEVELING COURSE (SCRATCH COAT) (3/4")
 - 5 ITEM 402/403 - BITUMINOUS ASPHALT PAVEMENT SURFACE WITH FIBER REINFORCEMENT (ACE FIBER OR APPROVED EQUAL) (1-1/4")
 - 6 HOT APPLIED RUBBERIZED JOINT SEALER WHERE ASPHALT MEETS CURB FOLLOWING THE PLACEMENT OF SURFACE COURSE (INCIDENTAL TO ASPHALT PAVEMENT)
 - 7 DO NOT DISTURB YARD AREA
 - 8 EXISTING CURB (REMOVE AND REPLACE AS NEEDED, BY OTHERS)

TYPICAL PAVEMENT SECTION- ROLLED CURB MILL & OVERLAY

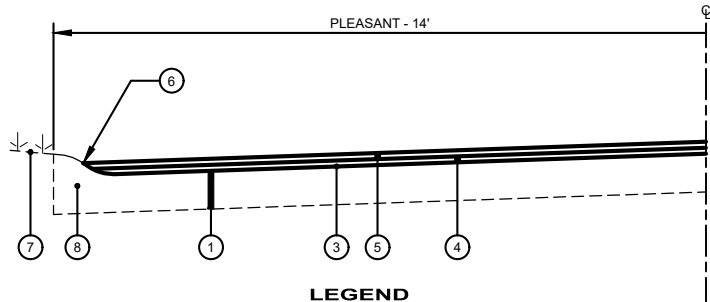
N.T.S.
HOLLYWOODS, W. VILLA, CARMEL MANOR



- LEGEND**
- 1 EXISTING PAVEMENT (CONCRETE OR ASPHALT) WITH ASPHALT OVERLAY
 - 2 ITEM 408 - ASPHALT MILLING (2" ±) - (IF STREET HAS CONCRETE BASE, REMOVE TO EXISTING CONCRETE SURFACE)
 - 3 ITEM 406 - TACK COAT @ 0.1 GAL/SY (INCIDENTAL TO ASPHALT PAVEMENT)
 - 4 ITEM 402/403 - BITUMINOUS ASPHALT PAVEMENT LEVELING COURSE (SCRATCH COAT) (3/4")
 - 5 ITEM 402/403 - BITUMINOUS ASPHALT PAVEMENT SURFACE WITH FIBER REINFORCEMENT (ACE FIBER OR APPROVED EQUAL) (1-1/4")
 - 6 HOT APPLIED RUBBERIZED JOINT SEALER WHERE ASPHALT MEETS CURB FOLLOWING THE PLACEMENT OF SURFACE COURSE (INCIDENTAL TO ASPHALT PAVEMENT)
 - 7 DO NOT DISTURB YARD AREA
 - 8 EXISTING CURB (REMOVE AND REPLACE AS NEEDED, BY OTHERS)

TYPICAL PAVEMENT SECTION - VERTICAL CURB MILL & OVERLAY

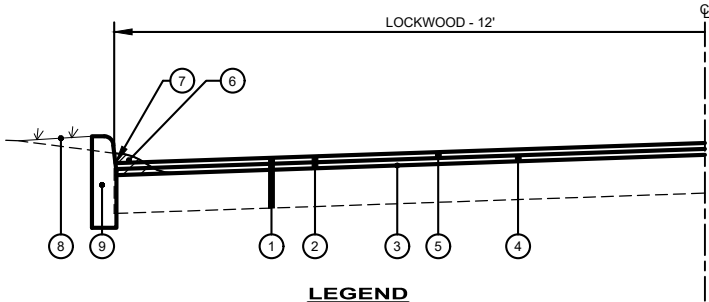
N.T.S.
COCHRAN, JAMES



- LEGEND**
- 1 EXISTING CONCRETE PAVEMENT
 - 2 NOTE NOT USED
 - 3 ITEM 406 - TACK COAT @ 0.1 GAL/SY (INCIDENTAL TO ASPHALT PAVEMENT)
 - 4 ITEM 402/403 - BITUMINOUS ASPHALT PAVEMENT LEVELING COURSE (SCRATCH COAT) (3/4")
 - 5 ITEM 402/403 - BITUMINOUS ASPHALT PAVEMENT SURFACE WITH FIBER REINFORCEMENT (ACE FIBER OR APPROVED EQUAL) (1-1/4")
 - 6 HOT APPLIED RUBBERIZED JOINT SEALER WHERE ASPHALT MEETS CURB FOLLOWING THE PLACEMENT OF SURFACE COURSE (INCIDENTAL TO ASPHALT PAVEMENT)
 - 7 DO NOT DISTURB YARD AREA
 - 8 EXISTING CURB (REMOVE AND REPLACE AS NEEDED, BY OTHERS)

TYPICAL PAVEMENT SECTION - ROLLED CURB OVERLAY

N.T.S.
PLEASANT



- LEGEND**
- 1 EXISTING CONCRETE PAVEMENT WITH ASPHALT OVERLAY
 - 2 ITEM 408 - ASPHALT MILLING (2" ±) - REMOVE TO EXISTING CONCRETE SURFACE
 - 3 ITEM 406 - TACK COAT @ 0.1 GAL/SY (INCIDENTAL TO ASPHALT PAVEMENT)
 - 4 ITEM 402/403 - BITUMINOUS ASPHALT PAVEMENT LEVELING COURSE (SCRATCH COAT) (3/4")
 - 5 ITEM 402/403 - BITUMINOUS ASPHALT PAVEMENT SURFACE WITH FIBER REINFORCEMENT (ACE FIBER OR APPROVED EQUAL) (1-1/4")
 - 6 ITEM 408 MILLING OF EX. CONCRETE CURB COMPLETED BY CONTRACTOR. COST OF ABOVE SHALL BE PAID FOR UNDER THE UNIT PRICE FOR BID ITEM 408 - ASPHALT PAVEMENT MILLING
 - 7 HOT APPLIED RUBBERIZED JOINT SEALER WHERE ASPHALT MEETS CURB FOLLOWING THE PLACEMENT OF SURFACE COURSE (INCIDENTAL TO ASPHALT PAVEMENT)
 - 8 TOPSOIL, SEED AND MULCH (BY CITY)
 - 9 4" VERTICAL CURB (BY CITY). CURB SHALL BE DEPRESSED AT DRIVEWAYS. AFTER CURB REPLACEMENT, ALL DRIVEWAYS TO BE ADJUSTED TO MATCH NEW DEPRESSED CURB (BY CITY)

TYPICAL PAVEMENT SECTION - CURB MILLING & PAVEMENT MILL & OVERLAY

N.T.S.
LOCKWOOD

verdantas

2161 CHAMBER CENTER DRIVE
FORT MITCHELL, KENTUCKY 41017
TEL: (699) 525-0944
WWW.VERDANTAS.COM

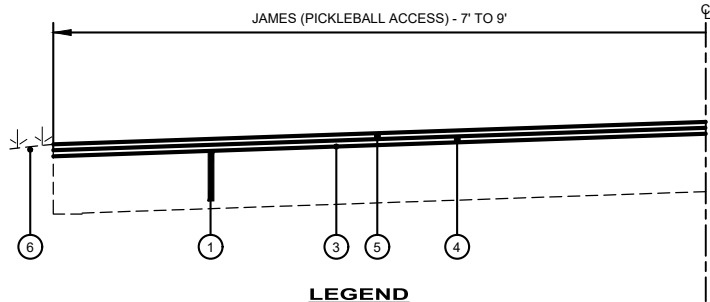
ISSUED FOR:	BID	NO	REVISION	DATE
ISSUE DATE:	05/01/2025			
SCALE:	AS SHOWN			
DESIGNED BY:	RSEI			
DRAWN BY:	RSEI			
CHECKED BY:	FTWE			

**FORT THOMAS 2025 STREET
RESURFACING PROGRAM**

**CITY OF FORT THOMAS
CAMPBELL COUNTY, KENTUCKY**

DETAIL SHEET 1

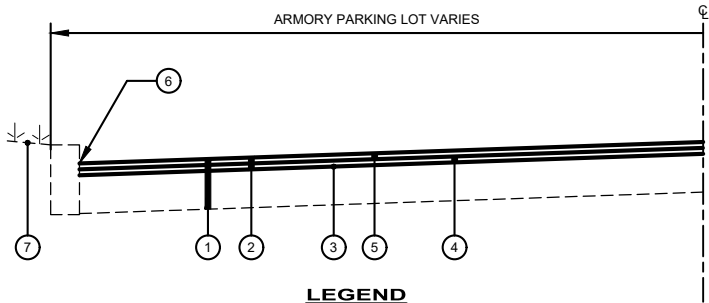
PROJECT NO. 242645-A	
DISCIPLINE CIVIL	
SHEET NAME DTL-1	
SHEET 3	OF 13



- LEGEND**
- 1 EXISTING ASPHALT PAVEMENT BASE
 - 2 NOTE NOT USED
 - 3 ITEM 406 - TACK COAT @ 0.1 GAL/SY (INCIDENTAL TO ASPHALT PAVEMENT)
 - 4 ITEM 402/403 - BITUMINOUS ASPHALT PAVEMENT LEVELING COURSE (SCRATCH COAT) (3/4")
 - 5 ITEM 402/403 - BITUMINOUS ASPHALT PAVEMENT SURFACE WITH FIBER REINFORCEMENT (ACE FIBER OR APPROVED EQUAL) (1-1/4")
 - 6 DO NOT DISTURB YARD AREA

TYPICAL PAVEMENT SECTION- NO CURB OVERLAY

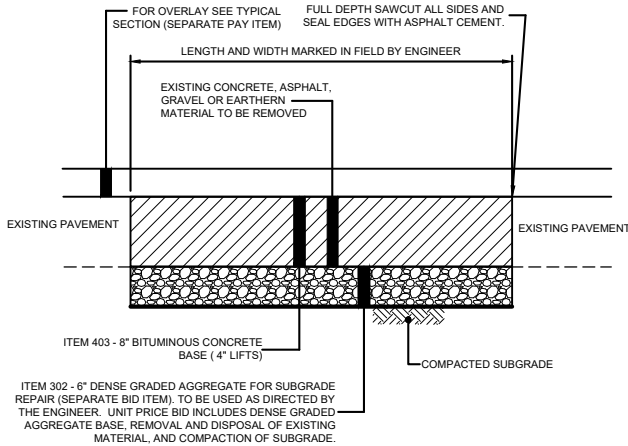
N.T.S.
JAMES (PICKLEBALL ACCESS)



- LEGEND**
- 1 EXISTING PARKING LOT PAVEMENT.
 - 2 ITEM 408 - ASPHALT MILLING (2" ±) - (IF STREET HAS CONCRETE BASE, REMOVE TO EXISTING CONCRETE SURFACE)
 - 3 ITEM 406 - TACK COAT @ 0.1 GAL/SY (INCIDENTAL TO ASPHALT PAVEMENT)
 - 4 ITEM 402/403 - BITUMINOUS ASPHALT PAVEMENT LEVELING COURSE (SCRATCH COAT) (3/4")
 - 5 ITEM 402/403 - BITUMINOUS ASPHALT PAVEMENT SURFACE WITH FIBER REINFORCEMENT (ACE FIBER OR APPROVED EQUAL) (1-1/4")
 - 6 HOT APPLIED RUBBERIZED JOINT SEALER WHERE ASPHALT MEETS CURB FOLLOWING THE PLACEMENT OF SURFACE COURSE (INCIDENTAL TO ASPHALT PAVEMENT)
 - 7 DO NOT DISTURB YARD AREA

TYPICAL PAVEMENT SECTION - PARKING LOT MILL & OVERLAY

N.T.S.
ARMORY PARKING LOT



FULL DEPTH PAVEMENT REPAIR

N.T.S.

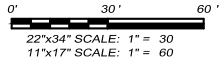
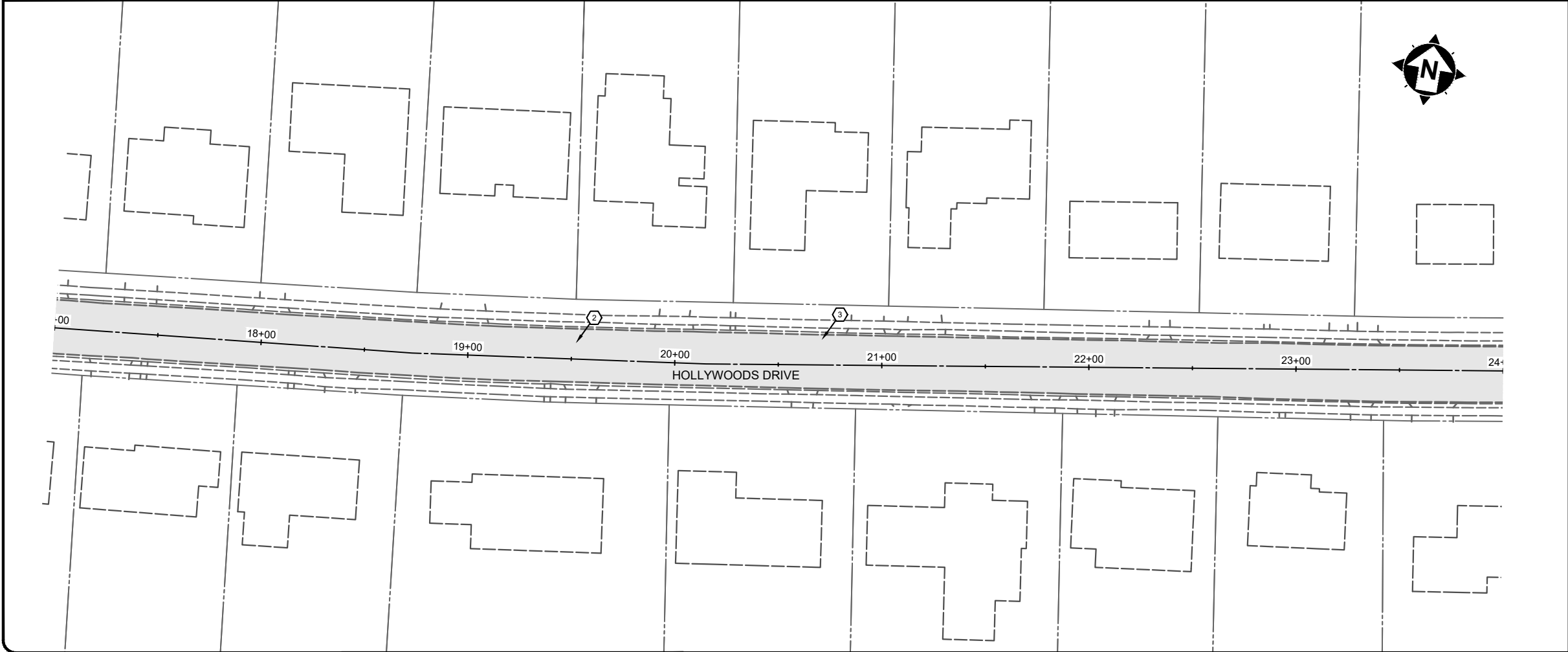
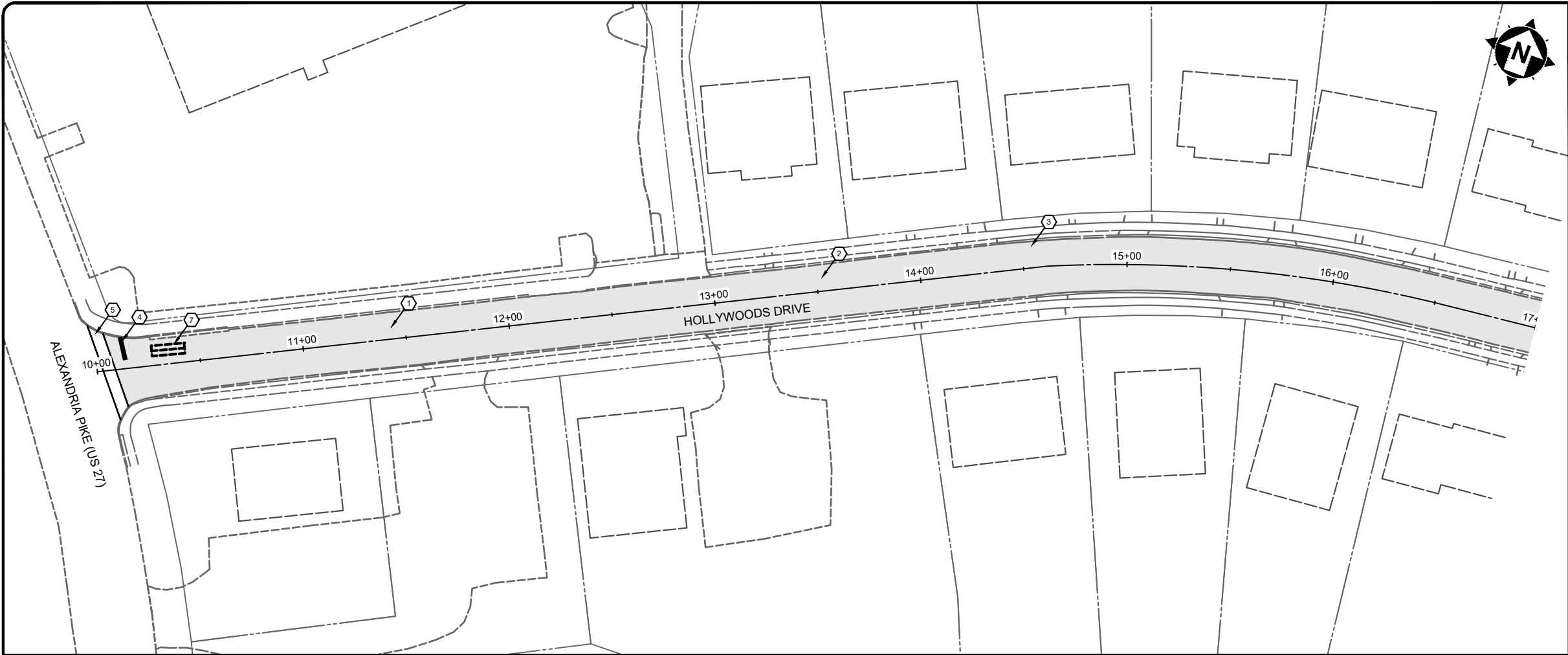
ISSUED FOR:	BID	NO	REVISION	DATE
ISSUE DATE:	05/01/2025			
SCALE:	AS SHOWN			
DESIGNED BY:	RSEI			
DRAWN BY:	RSEI			
CHECKED BY:	FTWE			

**FORT THOMAS 2025 STREET
RESURFACING PROGRAM**

**CITY OF FORT THOMAS
CAMPBELL COUNTY, KENTUCKY**

DETAIL SHEET 2

PROJECT NO. 242645-A	
DISCIPLINE CIVIL	
SHEET NAME DTL-2	
SHEET 4	OF 13



CONSTRUCTION NOTES

- 1 PRIOR TO MILLING, THE CONTRACTOR SHALL TAKE AT LEAST 1 CORE SAMPLE FROM EACH STREET WITH AN EXISTING ASPHALT SURFACE. FINAL NUMBER AND LOCATION OF CORES WILL BE COORDINATED IN FIELD BETWEEN THE CITY, THE ENGINEER, AND THE CONTRACTOR. THE COST TO BACKFILL THE CORES SHALL BE INCIDENTAL TO THE CORE SAMPLE.
- 2 THE CONTRACTOR SHALL LET THE CITY AND THE ENGINEER KNOW WHEN MILLING IS TO OCCUR. THE CONTRACTOR SHALL NOT OVERLAY THE MILLED SURFACE UNTIL EITHER THE CITY OR THE ENGINEER HAS DETERMINED THAT NO ADDITIONAL FULL DEPTH REPAIRS ARE NEEDED.
- 3 FINAL PAVEMENT ELEVATION AT CURB LINE SHALL NOT EXCEED THE EXISTING ASPHALT ELEVATION AT CURB LINE.
- 4 PAVEMENT MARKING - STOP BAR (24" WHITE)
- 5 PAVEMENT MARKING - CROSSWALK (8" WHITE)
- 6 PAVEMENT MARKING - PARKING STALL (6" WHITE)
- 7 REMOVE AND REPLACE TRAFFIC SIGNAL LOOP DETECTOR. COORDINATE WITH KYTC.

HATCH LEGEND



ASPHALT RESURFACING SEE TYPICAL SECTIONS ON DETAIL SHEETS

verdantas

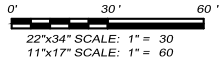
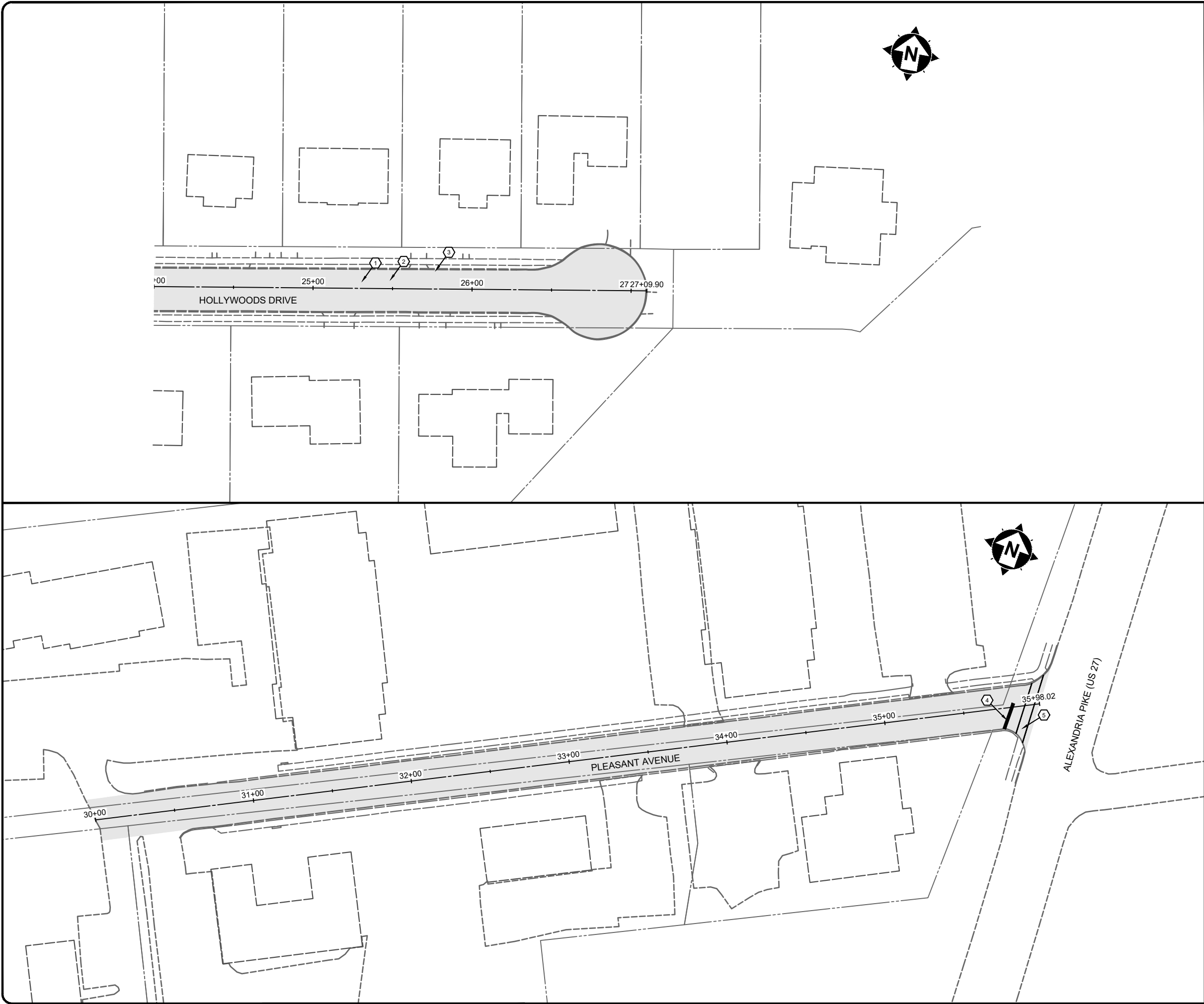
2161 CHAMBER CENTER DRIVE
FORT MITCHELL, KENTUCKY 41017
TEL: (699) 525-0944
WWW.VERDANTAS.COM

ISSUED FOR:	BID	NO	REVISION	DATE
ISSUE DATE:	05/01/2025			
SCALE:	AS SHOWN			
DESIGNED BY:	RSEI			
DRAWN BY:	RSEI			
CHECKED BY:	FTWE			

FORT THOMAS 2025 STREET
RESURFACING PROGRAM
CITY OF FORT THOMAS
CAMPBELL COUNTY, KENTUCKY

HOLLYWOODS (10+00 TO 24+00)

PROJECT NO. 242645-A	
DISCIPLINE CIVIL	
SHEET NAME PLAN-1	
SHEET 5	OF 13



CONSTRUCTION NOTES

- 1 PRIOR TO MILLING, THE CONTRACTOR SHALL TAKE AT LEAST 1 CORE SAMPLE FROM EACH STREET WITH AN EXISTING ASPHALT SURFACE. FINAL NUMBER AND LOCATION OF CORES WILL BE COORDINATED IN FIELD BETWEEN THE CITY, THE ENGINEER, AND THE CONTRACTOR. THE COST TO BACKFILL THE CORES SHALL BE INCIDENTAL TO THE CORE SAMPLE.
- 2 THE CONTRACTOR SHALL LET THE CITY AND THE ENGINEER KNOW WHEN MILLING IS TO OCCUR. THE CONTRACTOR SHALL NOT OVERLAY THE MILLED SURFACE UNTIL EITHER THE CITY OR THE ENGINEER HAS DETERMINED THAT NO ADDITIONAL FULL DEPTH REPAIRS ARE NEEDED.
- 3 FINAL PAVEMENT ELEVATION AT CURB LINE SHALL NOT EXCEED THE EXISTING ASPHALT ELEVATION AT CURB LINE.
- 4 PAVEMENT MARKING - STOP BAR (24" WHITE)
- 5 PAVEMENT MARKING - CROSSWALK (8" WHITE)
- 6 PAVEMENT MARKING - PARKING STALL (6" WHITE)
- 7 REMOVE AND REPLACE TRAFFIC SIGNAL LOOP DETECTOR. COORDINATE WITH KYTC.

HATCH LEGEND



ASPHALT RESURFACING SEE TYPICAL SECTIONS ON DETAIL SHEETS

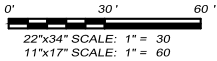
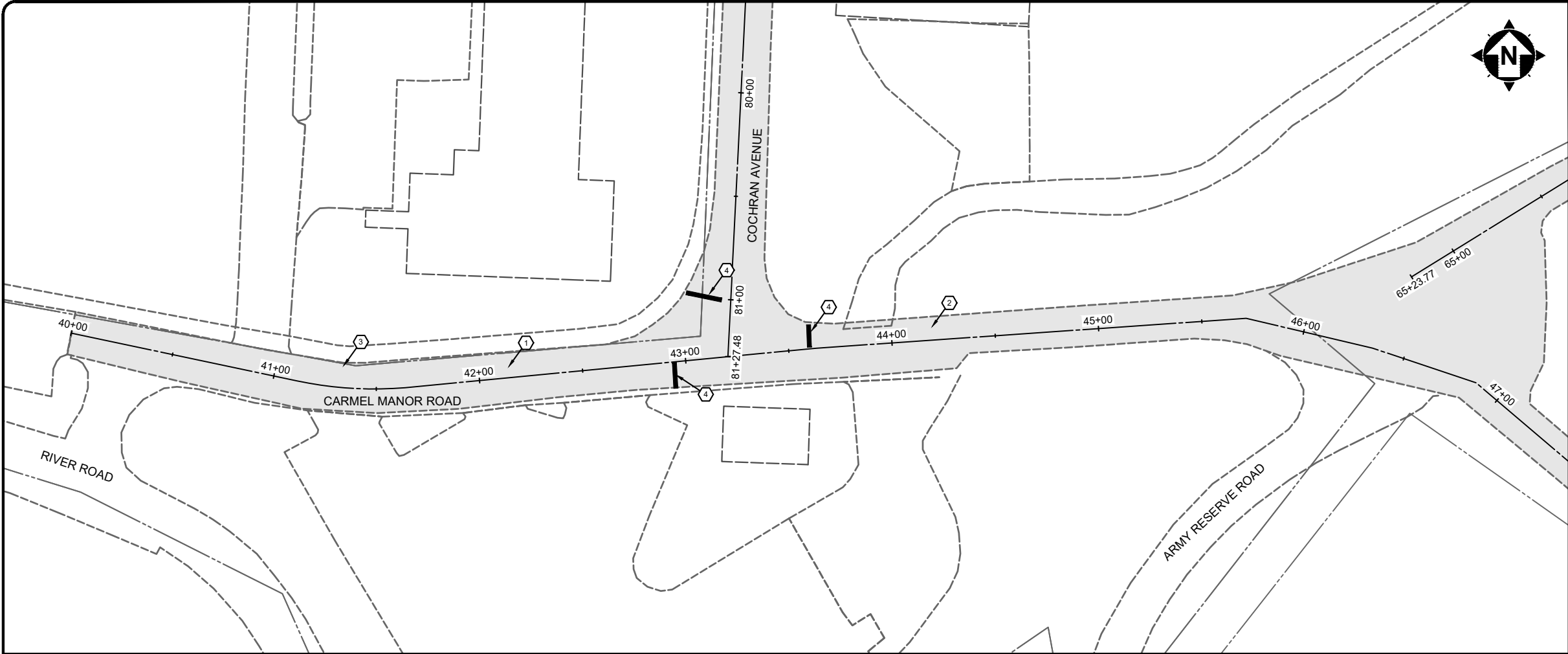
verdantas

2161 CHAMBER CENTER DRIVE
FORT MITCHELL, KENTUCKY 41017
TEL: (609) 525-0944
WWW.VERDANTAS.COM

ISSUED FOR:	BID NO	REVISION	DATE
ISSUE DATE:	05/01/2025		
SCALE:	AS SHOWN		
DESIGNED BY:	RSEI		
DRAWN BY:	RSEI		
CHECKED BY:	FTWE		

FORT THOMAS 2025 STREET
RESURFACING PROGRAM
CITY OF FORT THOMAS
CAMPBELL COUNTY, KENTUCKY
HOLLYWOODS (24+00 TO 27+10)
PLEASANT (30+00 TO 36+00)

PROJECT NO.	242645-A
DISCIPLINE	CIVIL
SHEET NAME	PLAN-2
SHEET	OF
6	13



22"x34" SCALE: 1" = 30'
11"x17" SCALE: 1" = 60'

CONSTRUCTION NOTES

- 1 PRIOR TO MILLING, THE CONTRACTOR SHALL TAKE AT LEAST 1 CORE SAMPLE FROM EACH STREET WITH AN EXISTING ASPHALT SURFACE. FINAL NUMBER AND LOCATION OF CORES WILL BE COORDINATED IN FIELD BETWEEN THE CITY, THE ENGINEER, AND THE CONTRACTOR. THE COST TO BACKFILL THE CORES SHALL BE INCIDENTAL TO THE CORE SAMPLE.
- 2 THE CONTRACTOR SHALL LET THE CITY AND THE ENGINEER KNOW WHEN MILLING IS TO OCCUR. THE CONTRACTOR SHALL NOT OVERLAY THE MILLED SURFACE UNTIL EITHER THE CITY OR THE ENGINEER HAS DETERMINED THAT NO ADDITIONAL FULL DEPTH REPAIRS ARE NEEDED.
- 3 FINAL PAVEMENT ELEVATION AT CURB LINE SHALL NOT EXCEED THE EXISTING ASPHALT ELEVATION AT CURB LINE.
- 4 PAVEMENT MARKING - STOP BAR (24" WHITE)
- 5 PAVEMENT MARKING - CROSSWALK (8" WHITE)
- 6 PAVEMENT MARKING - PARKING STALL (6" WHITE)
- 7 REMOVE AND REPLACE TRAFFIC SIGNAL LOOP DETECTOR. COORDINATE WITH KYTC.

HATCH LEGEND



ASPHALT RESURFACING SEE TYPICAL SECTIONS ON DETAIL SHEETS



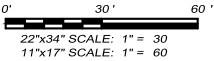
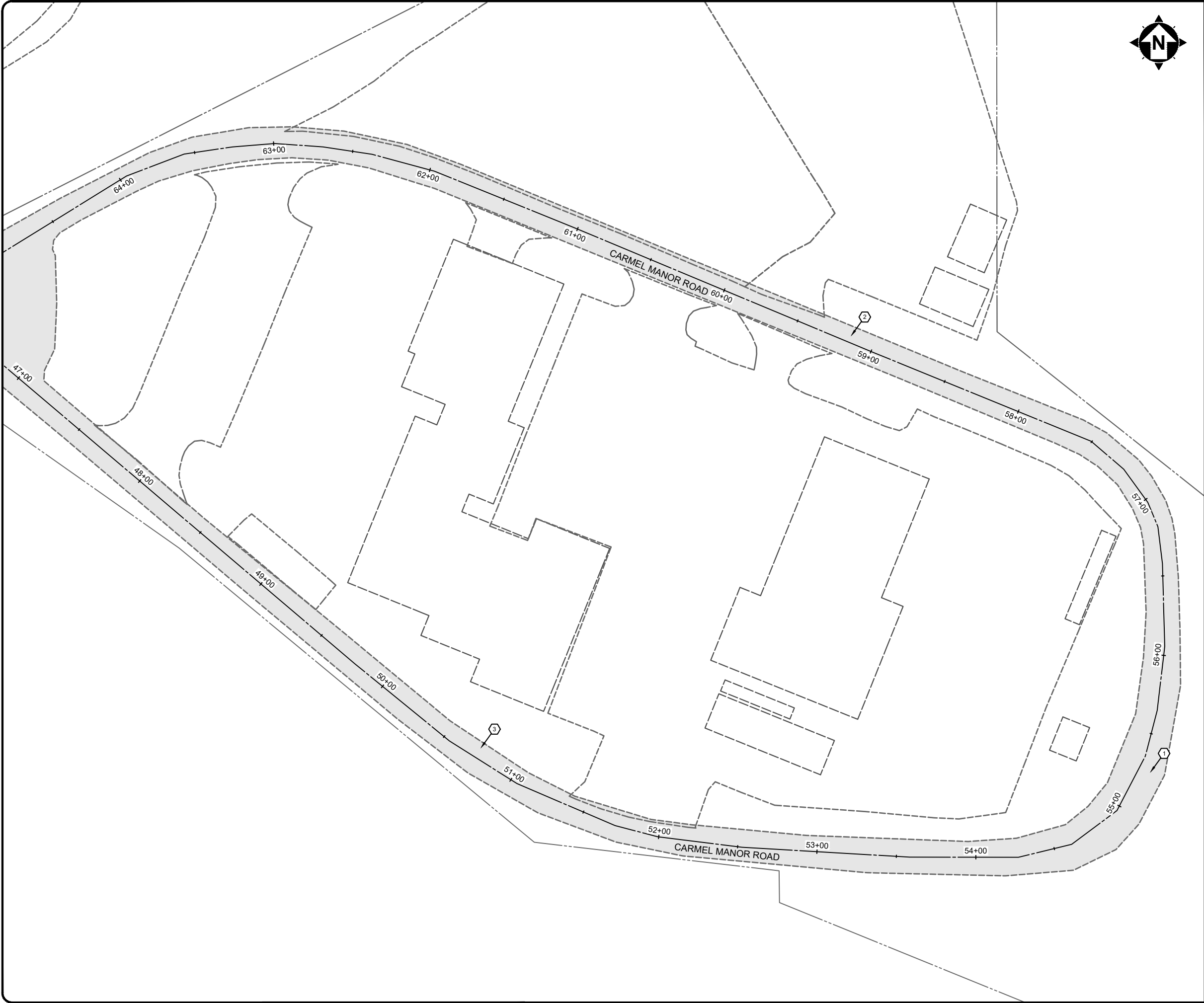
2161 CHAMBER CENTER DRIVE
FORT MITCHELL, KENTUCKY 41017
TEL: (609) 526-0944
WWW.VERDANTAS.COM

ISSUED FOR:	BID	NO	REVISION	DATE
ISSUE DATE:	05/01/2025			
SCALE:	AS SHOWN			
DESIGNED BY:	RSEI			
DRAWN BY:	RSEI			
CHECKED BY:	FTWE			

FORT THOMAS 2025 STREET
RESURFACING PROGRAM
CITY OF FORT THOMAS
CAMPBELL COUNTY, KENTUCKY

CARMEL MANOR (40+00 TO 47+00)

PROJECT NO.	
242645-A	
DISCIPLINE	
CIVIL	
SHEET NAME	
PLAN-3	
SHEET	OF
7	13



CONSTRUCTION NOTES

- 1 PRIOR TO MILLING, THE CONTRACTOR SHALL TAKE AT LEAST 1 CORE SAMPLE FROM EACH STREET WITH AN EXISTING ASPHALT SURFACE. FINAL NUMBER AND LOCATION OF CORES WILL BE COORDINATED IN FIELD BETWEEN THE CITY, THE ENGINEER, AND THE CONTRACTOR. THE COST TO BACKFILL THE CORES SHALL BE INCIDENTAL TO THE CORE SAMPLE.
- 2 THE CONTRACTOR SHALL LET THE CITY AND THE ENGINEER KNOW WHEN MILLING IS TO OCCUR. THE CONTRACTOR SHALL NOT OVERLAY THE MILLED SURFACE UNTIL EITHER THE CITY OR THE ENGINEER HAS DETERMINED THAT NO ADDITIONAL FULL DEPTH REPAIRS ARE NEEDED.
- 3 FINAL PAVEMENT ELEVATION AT CURB LINE SHALL NOT EXCEED THE EXISTING ASPHALT ELEVATION AT CURB LINE.
- 4 PAVEMENT MARKING - STOP BAR (24" WHITE)
- 5 PAVEMENT MARKING - CROSSWALK (8" WHITE)
- 6 PAVEMENT MARKING - PARKING STALL (6" WHITE)
- 7 REMOVE AND REPLACE TRAFFIC SIGNAL LOOP DETECTOR. COORDINATE WITH KYTC.

HATCH LEGEND



ASPHALT RESURFACING SEE TYPICAL SECTIONS ON DETAIL SHEETS



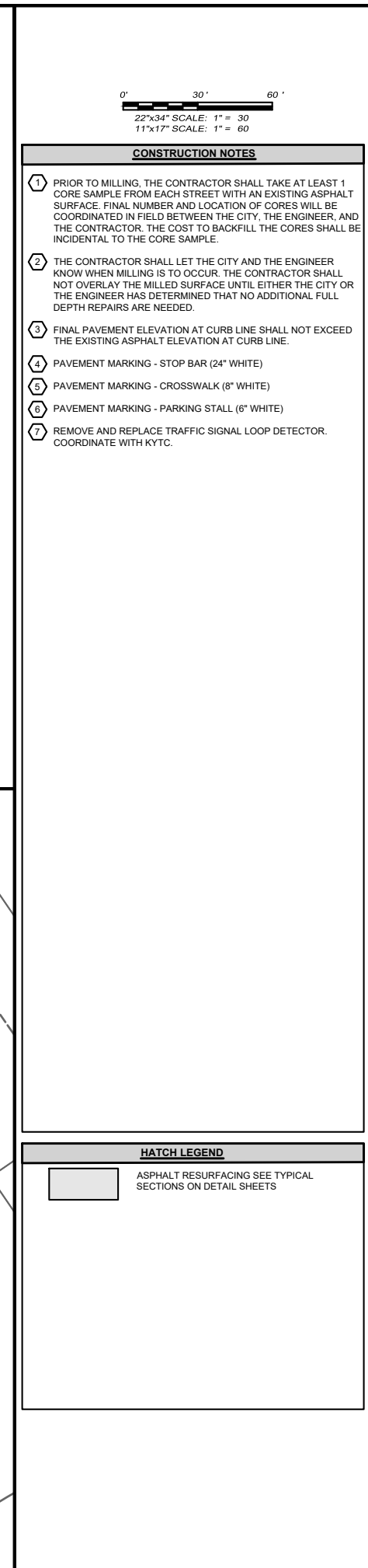
2161 CHAMBER CENTER DRIVE
FORT MITCHELL, KENTUCKY 41017
TEL: (609) 525-0944
WWW.VERDANTAS.COM

ISSUED FOR:	BID	NO	REVISION	DATE
ISSUE DATE:	05/01/2025			
SCALE:	AS SHOWN			
DESIGNED BY:	RSEI			
DRAWN BY:	RSEI			
CHECKED BY:	FTWE			


**FORT THOMAS 2025 STREET
RESURFACING PROGRAM**
CITY OF FORT THOMAS
CAMPBELL COUNTY, KENTUCKY

CARMEL MANOR (47+00 TO 65+00)

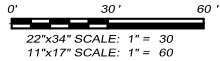
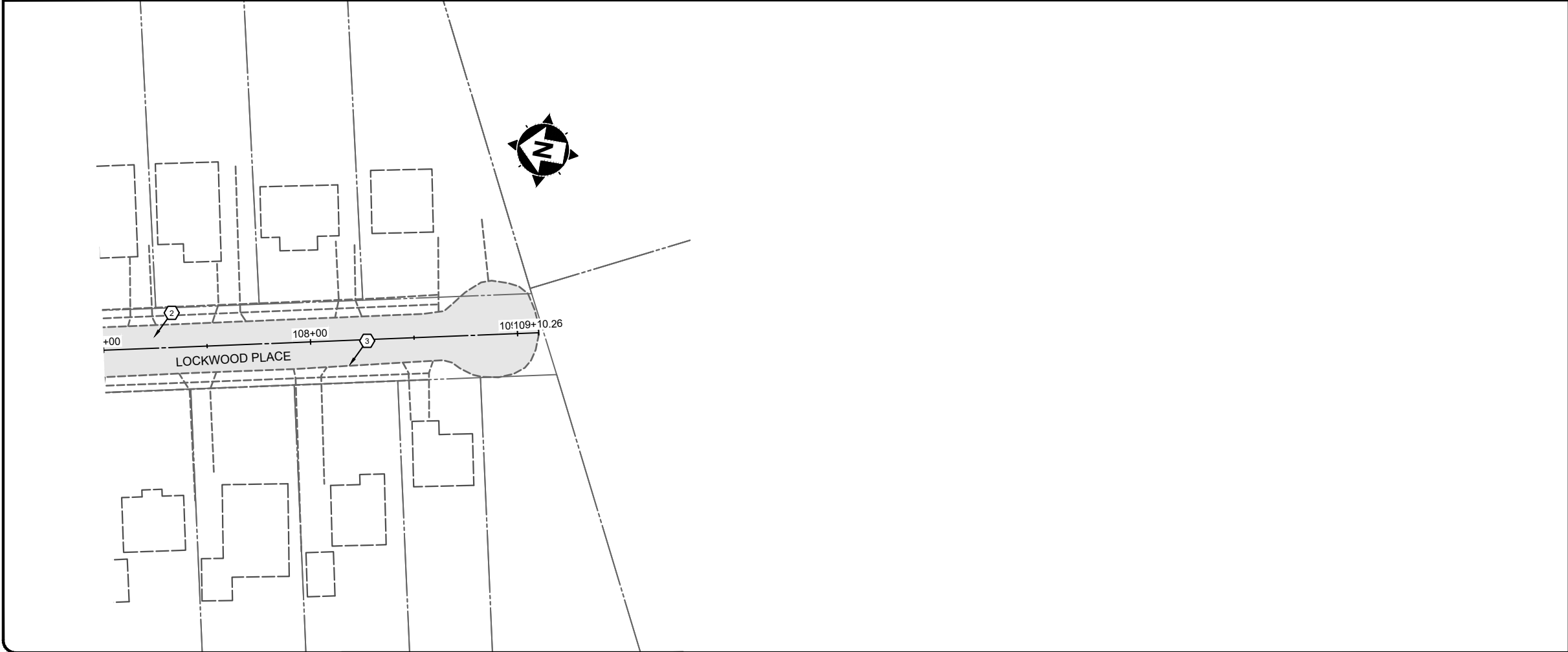
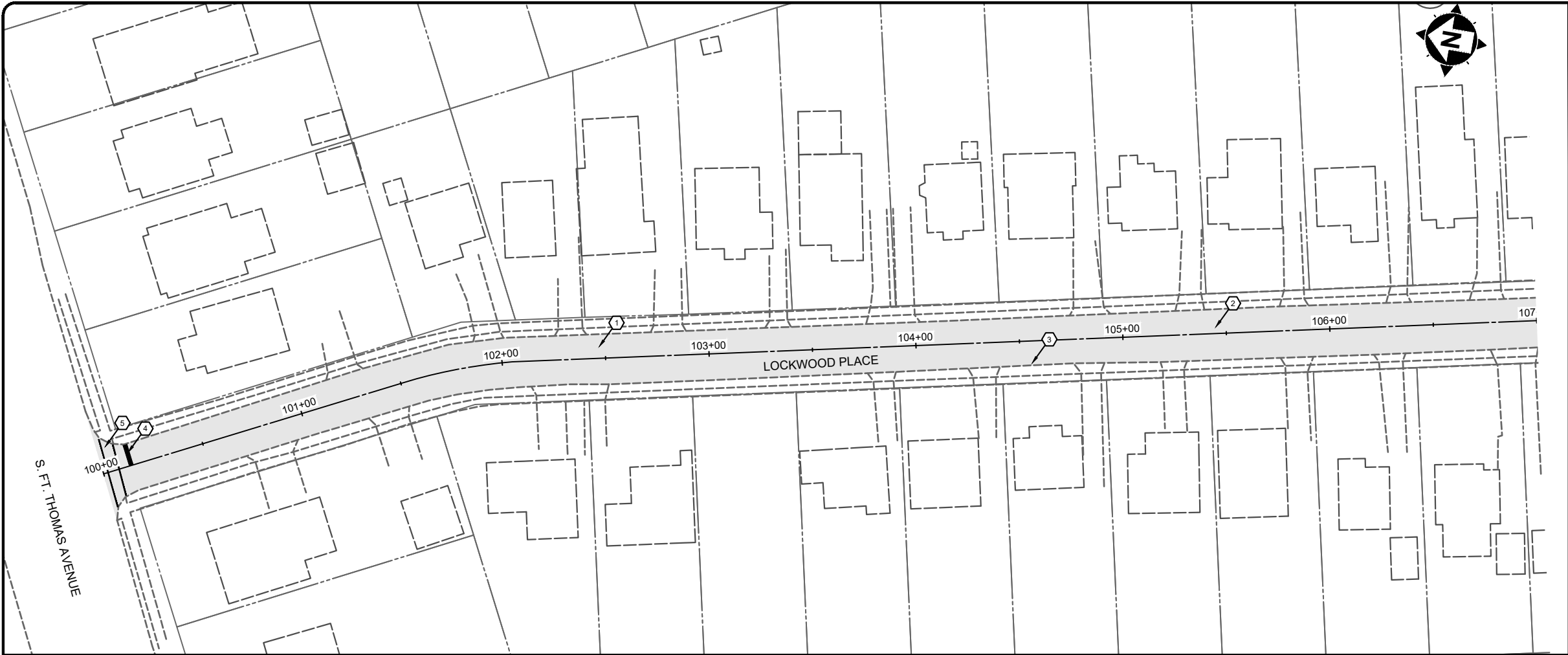
PROJECT NO. 242645-A	
DISCIPLINE CIVIL	
SHEET NAME PLAN-4	
SHEET 8	OF 13



FORT THOMAS 2025 STREET RESURFACING PROGRAM		ISSUED FOR:	BID	NO	REVISION	DATE
CITY OF FORT THOMAS		ISSUE DATE:	05/01/2025			
CAMPBELL COUNTY, KENTUCKY		SCALE:	AS SHOWN			
		DESIGNED BY:	RSEI			
		DRAWN BY:	RSEI			
		CHECKED BY:	FTWE			
COCHRAN (70+00 TO 81+30)						
PROJECT NO.						
242645-A						
DISCIPLINE						
CIVIL						
SHEET NAME						
PLAN-5						
SHEET	OF					
9	13					



2161 CHAMBER CENTER DRIVE
FORT MITCHELL, KENTUCKY 41017
TEL. (859) 525-0584
WWW.VERDANTAS.COM



CONSTRUCTION NOTES

- 1 PRIOR TO MILLING, THE CONTRACTOR SHALL TAKE AT LEAST 1 CORE SAMPLE FROM EACH STREET WITH AN EXISTING ASPHALT SURFACE. FINAL NUMBER AND LOCATION OF CORES WILL BE COORDINATED IN FIELD BETWEEN THE CITY, THE ENGINEER, AND THE CONTRACTOR. THE COST TO BACKFILL THE CORES SHALL BE INCIDENTAL TO THE CORE SAMPLE.
- 2 THE CONTRACTOR SHALL LET THE CITY AND THE ENGINEER KNOW WHEN MILLING IS TO OCCUR. THE CONTRACTOR SHALL NOT OVERLAY THE MILLED SURFACE UNTIL EITHER THE CITY OR THE ENGINEER HAS DETERMINED THAT NO ADDITIONAL FULL DEPTH REPAIRS ARE NEEDED.
- 3 FINAL PAVEMENT ELEVATION AT CURB LINE SHALL NOT EXCEED THE EXISTING ASPHALT ELEVATION AT CURB LINE.
- 4 PAVEMENT MARKING - STOP BAR (24" WHITE)
- 5 PAVEMENT MARKING - CROSSWALK (8" WHITE)
- 6 PAVEMENT MARKING - PARKING STALL (6" WHITE)
- 7 REMOVE AND REPLACE TRAFFIC SIGNAL LOOP DETECTOR. COORDINATE WITH KYTC.

HATCH LEGEND



ASPHALT RESURFACING SEE TYPICAL SECTIONS ON DETAIL SHEETS

verdantas

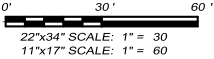
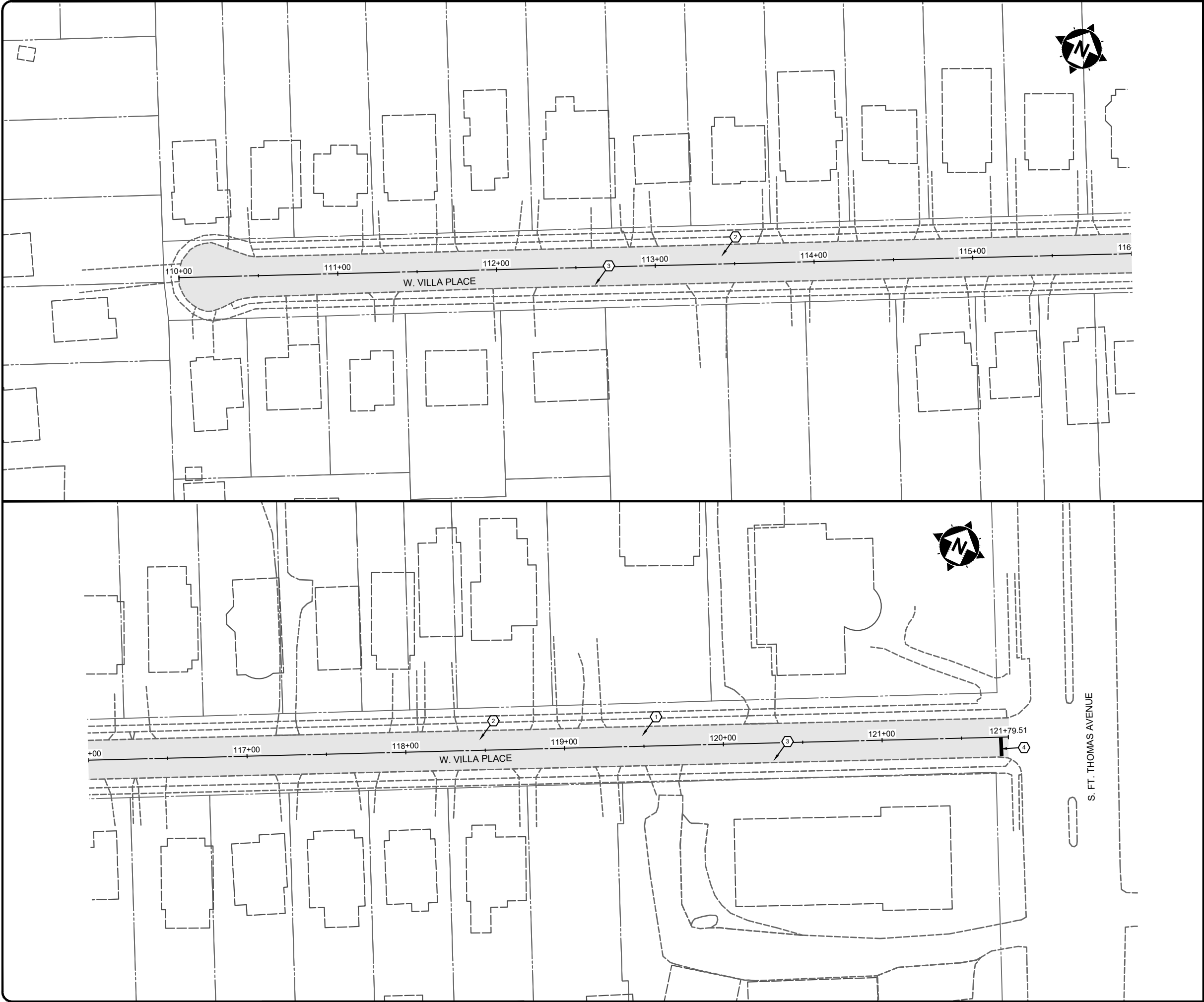
2161 CHAMBER CENTER DRIVE
FORT MITCHELL, KENTUCKY 41017
TEL: (609) 526-0844
WWW.VERDANTAS.COM

ISSUED FOR:	BID	NO	REVISION	DATE
ISSUE DATE:	05/01/2025			
SCALE:	AS SHOWN			
DESIGNED BY:	RSEI			
DRAWN BY:	RSEI			
CHECKED BY:	FTWE			

**FORT THOMAS 2025 STREET
RESURFACING PROGRAM**
CITY OF FORT THOMAS
CAMPBELL COUNTY, KENTUCKY

LOCKWOOD (100+00 TO 109+10)

PROJECT NO. 242645-A	
DISCIPLINE CIVIL	
SHEET NAME PLAN-6	
SHEET 10	OF 13



CONSTRUCTION NOTES

- 1 PRIOR TO MILLING, THE CONTRACTOR SHALL TAKE AT LEAST 1 CORE SAMPLE FROM EACH STREET WITH AN EXISTING ASPHALT SURFACE. FINAL NUMBER AND LOCATION OF CORES WILL BE COORDINATED IN FIELD BETWEEN THE CITY, THE ENGINEER, AND THE CONTRACTOR. THE COST TO BACKFILL THE CORES SHALL BE INCIDENTAL TO THE CORE SAMPLE.
- 2 THE CONTRACTOR SHALL LET THE CITY AND THE ENGINEER KNOW WHEN MILLING IS TO OCCUR. THE CONTRACTOR SHALL NOT OVERLAY THE MILLED SURFACE UNTIL EITHER THE CITY OR THE ENGINEER HAS DETERMINED THAT NO ADDITIONAL FULL DEPTH REPAIRS ARE NEEDED.
- 3 FINAL PAVEMENT ELEVATION AT CURB LINE SHALL NOT EXCEED THE EXISTING ASPHALT ELEVATION AT CURB LINE.
- 4 PAVEMENT MARKING - STOP BAR (24" WHITE)
- 5 PAVEMENT MARKING - CROSSWALK (8" WHITE)
- 6 PAVEMENT MARKING - PARKING STALL (6" WHITE)
- 7 REMOVE AND REPLACE TRAFFIC SIGNAL LOOP DETECTOR. COORDINATE WITH KYTC.

HATCH LEGEND



ASPHALT RESURFACING SEE TYPICAL SECTIONS ON DETAIL SHEETS

verdantas

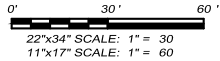
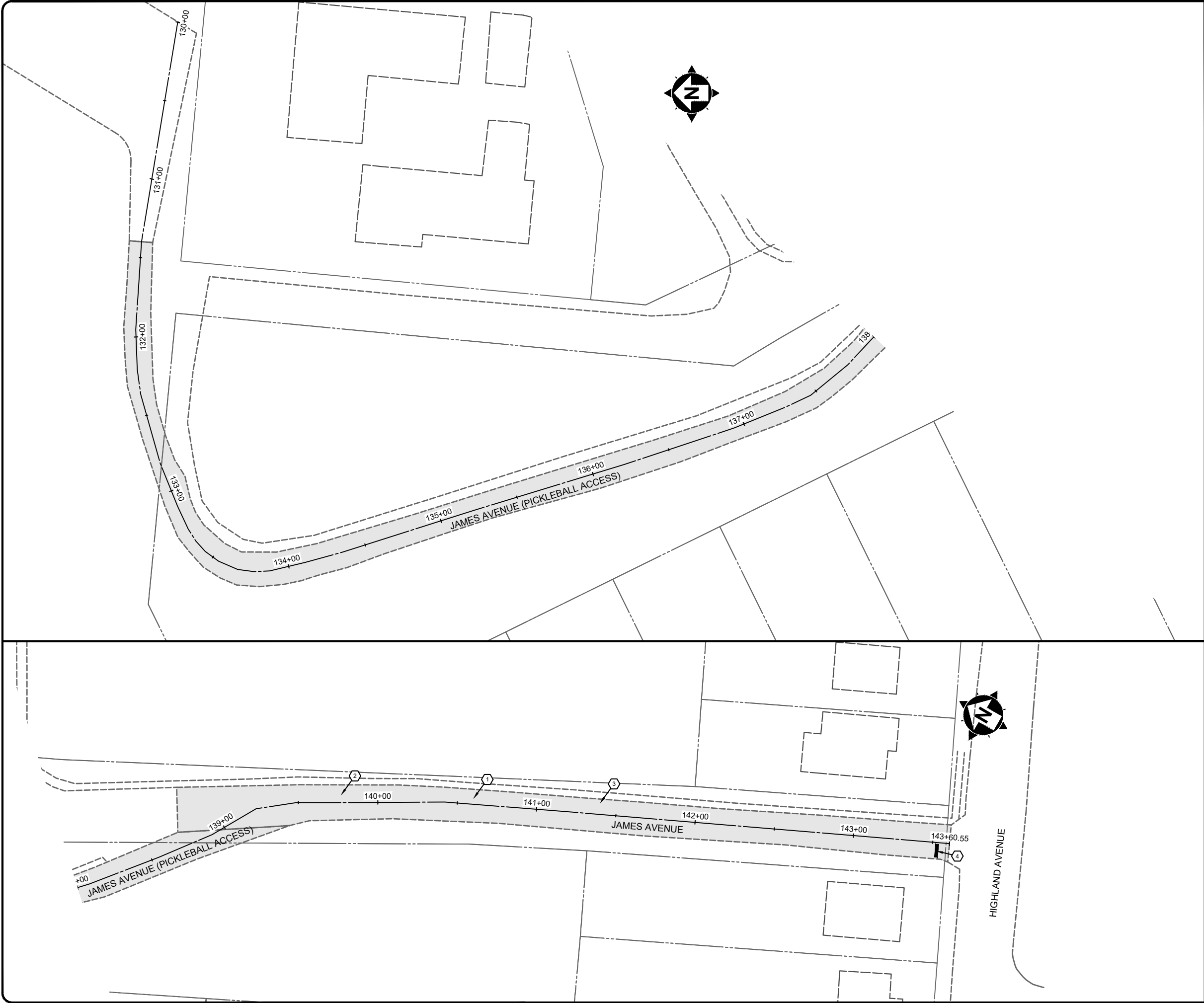
2161 CHAMBER CENTER DRIVE
FORT MITCHELL, KENTUCKY 41017
TEL: (609) 525-0944
WWW.VERDANTAS.COM

ISSUED FOR:	BID NO	REVISION	DATE
ISSUE DATE:	05/01/2025		
SCALE:	AS SHOWN		
DESIGNED BY:	RSEI		
DRAWN BY:	RSEI		
CHECKED BY:	FTWE		

FORT THOMAS 2025 STREET
RESURFACING PROGRAM
CITY OF FORT THOMAS
CAMPBELL COUNTY, KENTUCKY

W. VILLA (110+00 TO 121+80)

PROJECT NO. 242645-A	
DISCIPLINE CIVIL	
SHEET NAME PLAN-7	
SHEET 11	OF 13



CONSTRUCTION NOTES

- 1 PRIOR TO MILLING, THE CONTRACTOR SHALL TAKE AT LEAST 1 CORE SAMPLE FROM EACH STREET WITH AN EXISTING ASPHALT SURFACE. FINAL NUMBER AND LOCATION OF CORES WILL BE COORDINATED IN FIELD BETWEEN THE CITY, THE ENGINEER, AND THE CONTRACTOR. THE COST TO BACKFILL THE CORES SHALL BE INCIDENTAL TO THE CORE SAMPLE.
- 2 THE CONTRACTOR SHALL LET THE CITY AND THE ENGINEER KNOW WHEN MILLING IS TO OCCUR. THE CONTRACTOR SHALL NOT OVERLAY THE MILLED SURFACE UNTIL EITHER THE CITY OR THE ENGINEER HAS DETERMINED THAT NO ADDITIONAL FULL DEPTH REPAIRS ARE NEEDED.
- 3 FINAL PAVEMENT ELEVATION AT CURB LINE SHALL NOT EXCEED THE EXISTING ASPHALT ELEVATION AT CURB LINE.
- 4 PAVEMENT MARKING - STOP BAR (24" WHITE)
- 5 PAVEMENT MARKING - CROSSWALK (8" WHITE)
- 6 PAVEMENT MARKING - PARKING STALL (6" WHITE)
- 7 REMOVE AND REPLACE TRAFFIC SIGNAL LOOP DETECTOR. COORDINATE WITH KYTC.

HATCH LEGEND



ASPHALT RESURFACING SEE TYPICAL SECTIONS ON DETAIL SHEETS



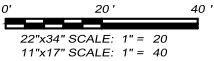
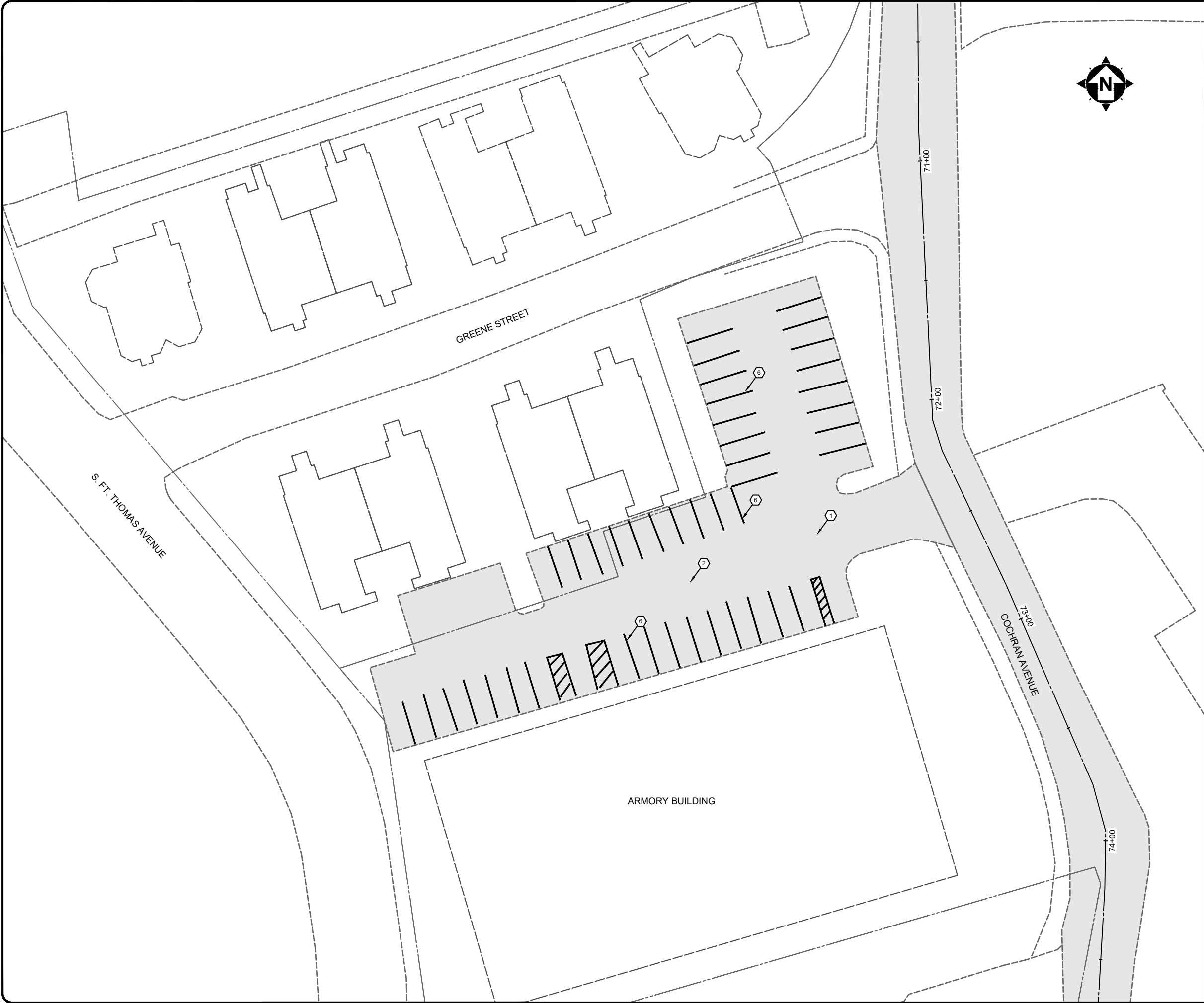
2161 CHAMBER CENTER DRIVE
FORT MITCHELL, KENTUCKY 41017
TEL: (609) 525-0944
WWW.VERDANTAS.COM

ISSUED FOR:	BID	NO	REVISION	DATE
ISSUE DATE:	05/01/2025			
SCALE:	AS SHOWN			
DESIGNED BY:	RSEI			
DRAWN BY:	RSEI			
CHECKED BY:	FTWE			

FORT THOMAS 2025 STREET
RESURFACING PROGRAM
CITY OF FORT THOMAS
CAMPBELL COUNTY, KENTUCKY

JAMES (130+00 TO 143+60)

PROJECT NO. 242645-A	
DISCIPLINE CIVIL	
SHEET NAME PLAN-8	
SHEET 12	OF 13



CONSTRUCTION NOTES

- 1 PRIOR TO MILLING, THE CONTRACTOR SHALL TAKE AT LEAST 1 CORE SAMPLE FROM EACH STREET WITH AN EXISTING ASPHALT SURFACE. FINAL NUMBER AND LOCATION OF CORES WILL BE COORDINATED IN FIELD BETWEEN THE CITY, THE ENGINEER, AND THE CONTRACTOR. THE COST TO BACKFILL THE CORES SHALL BE INCIDENTAL TO THE CORE SAMPLE.
- 2 THE CONTRACTOR SHALL LET THE CITY AND THE ENGINEER KNOW WHEN MILLING IS TO OCCUR. THE CONTRACTOR SHALL NOT OVERLAY THE MILLED SURFACE UNTIL EITHER THE CITY OR THE ENGINEER HAS DETERMINED THAT NO ADDITIONAL FULL DEPTH REPAIRS ARE NEEDED.
- 3 FINAL PAVEMENT ELEVATION AT CURB LINE SHALL NOT EXCEED THE EXISTING ASPHALT ELEVATION AT CURB LINE.
- 4 PAVEMENT MARKING - STOP BAR (24" WHITE)
- 5 PAVEMENT MARKING - CROSSWALK (8" WHITE)
- 6 PAVEMENT MARKING - PARKING STALL (6" WHITE)
- 7 REMOVE AND REPLACE TRAFFIC SIGNAL LOOP DETECTOR. COORDINATE WITH KYTC.

HATCH LEGEND



ASPHALT RESURFACING SEE TYPICAL SECTIONS ON DETAIL SHEETS



2161 CHAMBER CENTER DRIVE
FORT MITCHELL, KENTUCKY 41017
TEL: (609) 525-0944
WWW.VERDANTAS.COM

ISSUED FOR:	BID NO	REVISION	DATE
ISSUE DATE: 05/01/2025			
SCALE: AS SHOWN			
DESIGNED BY: RSEI			
DRAWN BY: RSEI			
CHECKED BY: FTWE			

FORT THOMAS 2025 STREET
RESURFACING PROGRAM
CITY OF FORT THOMAS
CAMPBELL COUNTY, KENTUCKY

ARMORY PARKING LOT

PROJECT NO. 242645-A	
DISCIPLINE CIVIL	
SHEET NAME PLAN-9	
SHEET 13	OF 13