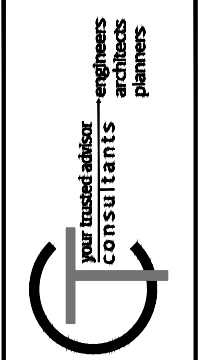
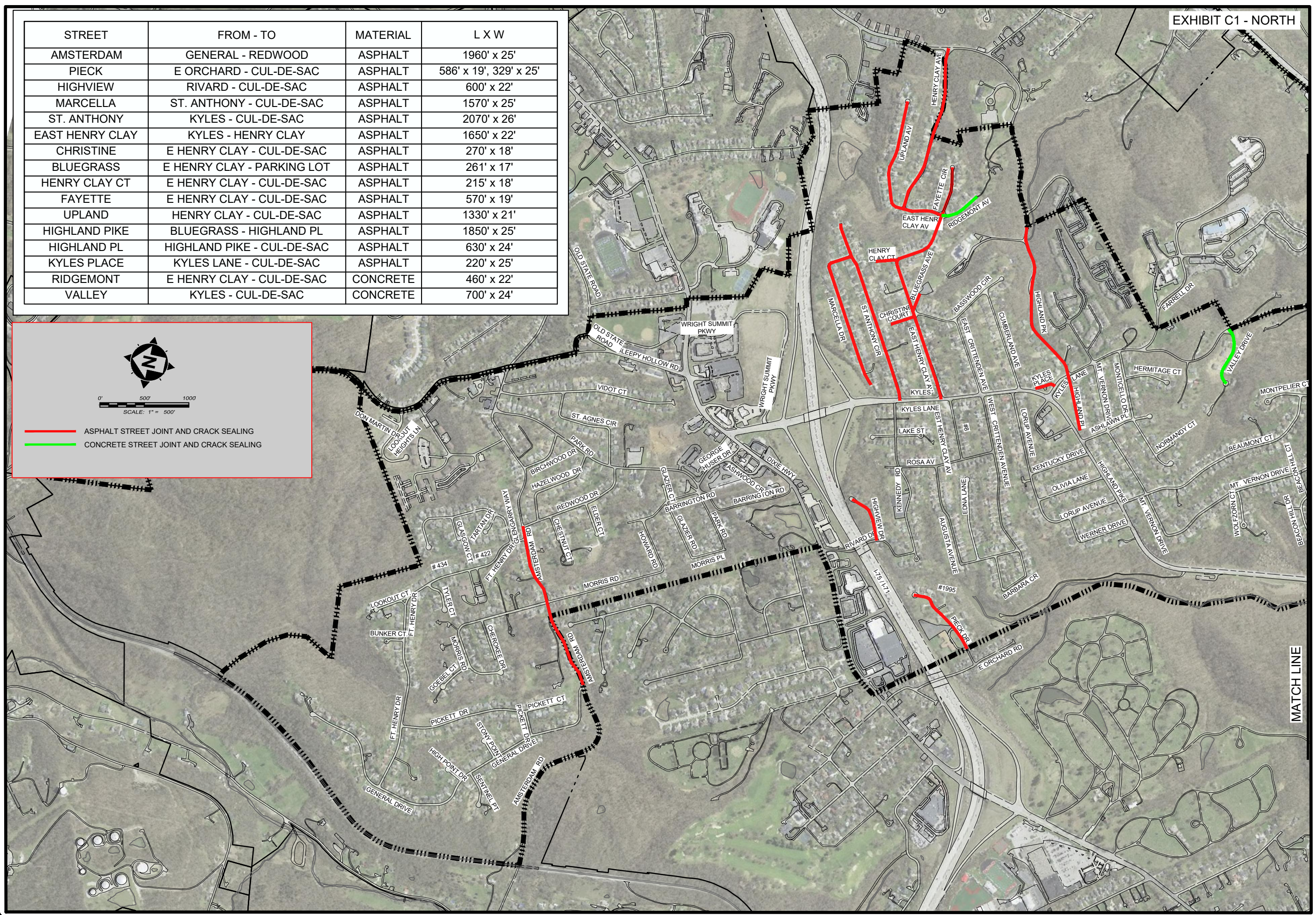


STREET	FROM - TO	MATERIAL	L X W
AMSTERDAM	GENERAL - REDWOOD	ASPHALT	1960' x 25'
PIECK	E ORCHARD - CUL-DE-SAC	ASPHALT	586' x 19', 329' x 25'
HIGHVIEW	RIVARD - CUL-DE-SAC	ASPHALT	600' x 22'
MARCELLA	ST. ANTHONY - CUL-DE-SAC	ASPHALT	1570' x 25'
ST. ANTHONY	KYLES - CUL-DE-SAC	ASPHALT	2070' x 26'
EAST HENRY CLAY	KYLES - HENRY CLAY	ASPHALT	1650' x 22'
CHRISTINE	E HENRY CLAY - CUL-DE-SAC	ASPHALT	270' x 18'
BLUEGRASS	E HENRY CLAY - PARKING LOT	ASPHALT	261' x 17'
HENRY CLAY CT	E HENRY CLAY - CUL-DE-SAC	ASPHALT	215' x 18'
FAYETTE	E HENRY CLAY - CUL-DE-SAC	ASPHALT	570' x 19'
UPLAND	HENRY CLAY - CUL-DE-SAC	ASPHALT	1330' x 21'
HIGHLAND PIKE	BLUEGRASS - HIGHLAND PL	ASPHALT	1850' x 25'
HIGHLAND PL	HIGHLAND PIKE - CUL-DE-SAC	ASPHALT	630' x 24'
KYLES PLACE	KYLES LANE - CUL-DE-SAC	ASPHALT	220' x 25'
RIDGEMONT	E HENRY CLAY - CUL-DE-SAC	CONCRETE	460' x 22'
VALLEY	KYLES - CUL-DE-SAC	CONCRETE	700' x 24'

— ASPHALT STREET JOINT AND CRACK SEALING  
— CONCRETE STREET JOINT AND CRACK SEALING



NO	REVISION	DATE

ISSUED FOR:	BID	DESIGNED BY:	DRAWN BY:	CHECKED BY:

ISSUE DATE:	SCALE:	DESIGNED BY:	DRAWN BY:	CHECKED BY:

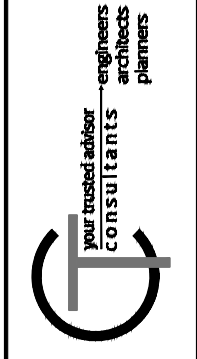
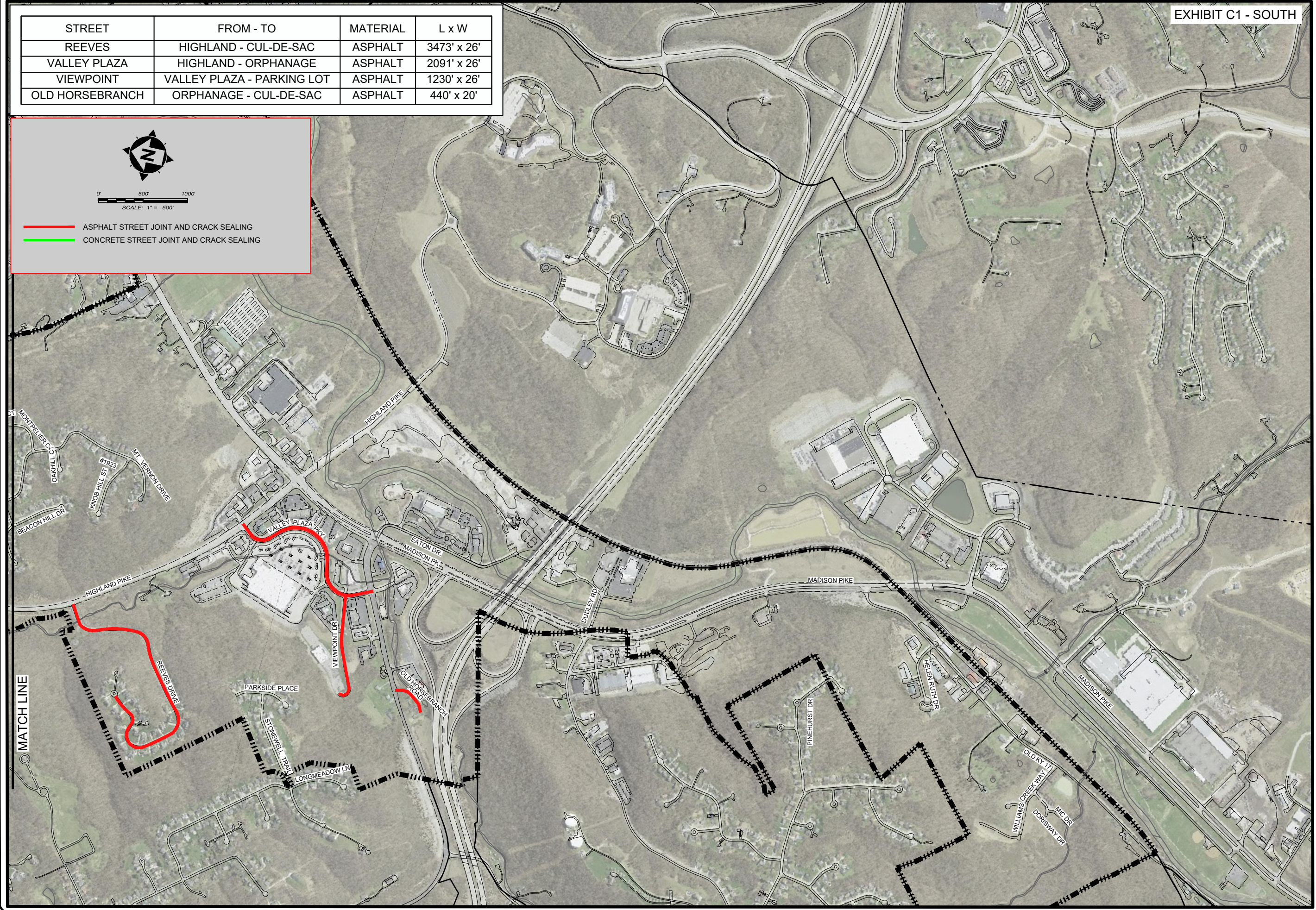
**FORT WRIGHT 2024 JOINT AND CRACK SEAL PROGRAM**  
**CITY MAP**  
 - FORT WRIGHT, KY. -  
**NORTH MAP**

PROJECT NO:	242404
DISCIPLINE:	CIVIL
SHEET NAME:	NORTH MAP
SHEET	OF
1	2

STREET	FROM - TO	MATERIAL	L x W
REEVES	HIGHLAND - CUL-DE-SAC	ASPHALT	3473' x 26'
VALLEY PLAZA	HIGHLAND - ORPHANAGE	ASPHALT	2091' x 26'
VIEWPOINT	VALLEY PLAZA - PARKING LOT	ASPHALT	1230' x 26'
OLD HORSEBRANCH	ORPHANAGE - CUL-DE-SAC	ASPHALT	440' x 20'

0' 500' 1000'  
SCALE: 1" = 500'

— ASPHALT STREET JOINT AND CRACK SEALING  
— CONCRETE STREET JOINT AND CRACK SEALING



ISSUED FOR:	BID NO	REVISION	DATE
ISSUE DATE: 9/26/2024			
SCALE: AS SHOWN			
DESIGNED BY: MHEL			
DRAWN BY: CCOF			
CHECKED BY: MHEL			

**FORT WRIGHT 2024 JOINT AND CRACK SEAL PROGRAM**  
**CITY MAP**  
 - FORT WRIGHT, KY -  
**SOUTH MAP**

PROJECT NO.	242404
DISCIPLINE	CIVIL
SHEET NAME	SOUTH MAP
SHEET	2
OF	2