

CITY OF LAKESIDE PARK
KENTON COUNTY, KENTUCKY
MARLO WAY AND SHAKER
ROAD RECONSTRUCTION

242350

CITY OF LAKESIDE PARK OFFICIALS

MAYOR
PAUL MARKGRAF

CITY CLERK
TERESA L. BRUCK

CITY COUNCIL MEMBERS

TOM BERNHEIMER

DENNIS LANDWEHR

CASSI SCHABELL

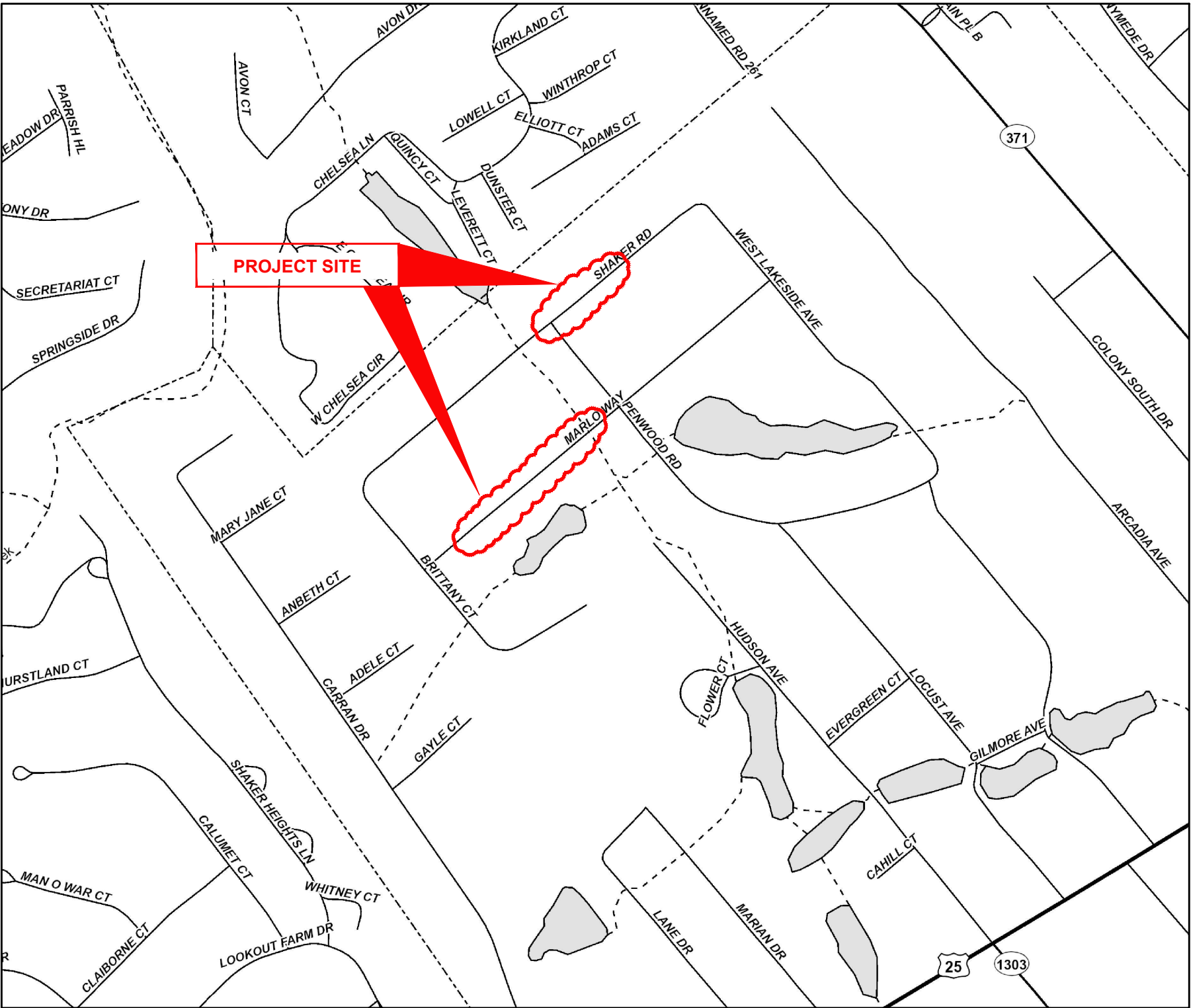
MARY ANN THAMAN

BRIAN WAITE

DAVE WOLFER

CITY ATTORNEY
GREG VOSS

PUBLIC WORKS DIRECTOR
STEVE GREER



VICINITY MAP

K.T.C SPECIFICATIONS

THE LATEST STANDARD SPECIFICATIONS OF THE KENTUCKY TRANSPORTATION CABINET, INCLUDING CHANGES AND SUPPLEMENTAL SPECIFICATIONS THERETO AND CITY OF LAKESIDE PARK ENGINEERING DEPARTMENT REQUIREMENTS SHALL GOVERN THIS IMPROVEMENT.

SOURCE OF BOUNDARY INFORMATION

THE BOUNDARY INFORMATION SHOWN ON THESE PLANS IS BASED UPON KENTON COUNTY G.I.S. MAPPING AND DOES NOT REPRESENT AN ACTUAL FIELD BOUNDARY SURVEY BY VERDANTAS, LLC.



INDEX OF SHEETS		
NO.	DWG NAME	SHEET NAME
1	TTL	TITLE
2	NOTES	NOTES & LEGEND
3	DTL-01	DETAILS 1
4	DTL-02	DETAILS 2
5	PNP-01	PLAN & PROFILE 10+00 - 14+25
6	PNP-02	PLAN & PROFILE 14+25 - 18+30
7	PNP-03	PLAN & PROFILE 50+00 - 54+50
8	PNP-04	PLAN & PROFILE 54+50 - 59+25

verdantas

2161 CHAMBER CENTER DRIVE
FORT MITCHELL, KENTUCKY 41017
TEL: (609) 525-0544
WWW.VERDANTAS.COM

ISSUED FOR:	BID	NO	REVISION	DATE
ISSUE DATE:	02/13/2025			
SCALE:				
DESIGNED BY:	AWAL			
DRAWN BY:	AWAL			
CHECKED BY:	MHEL			

MARLO WAY AND SHAKER ROAD
RECONSTRUCTION
- CITY OF LAKESIDE PARK, KY 41017 -

TITLE SHEET

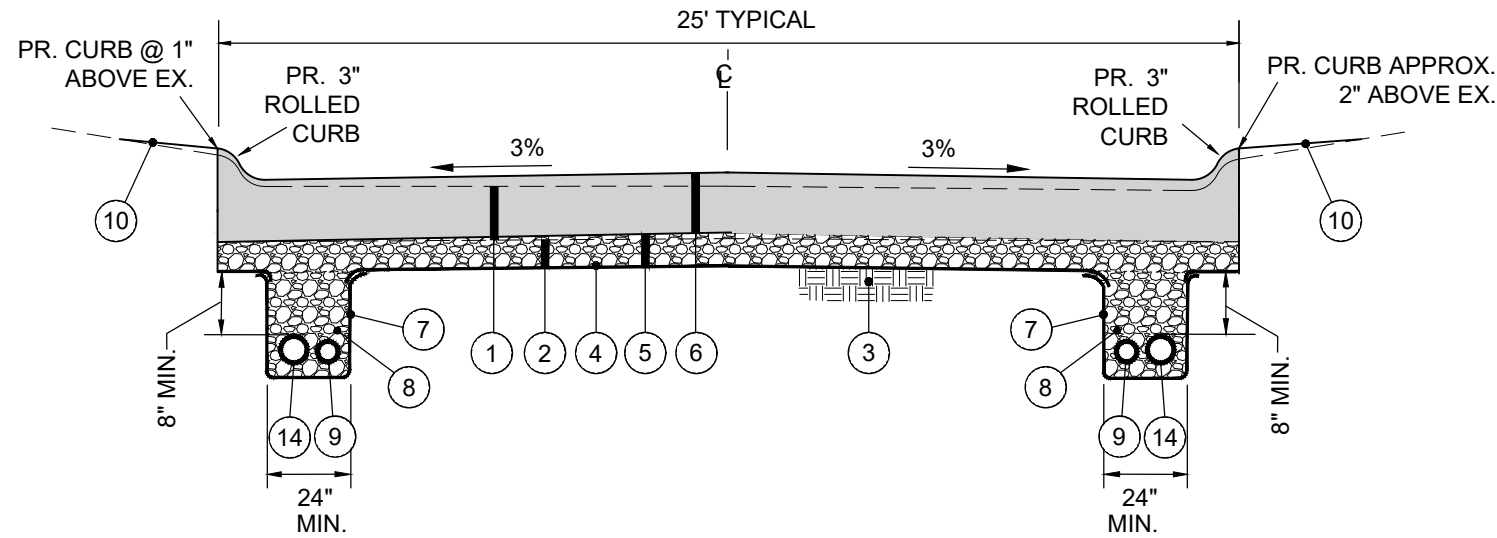
PROJECT NO. 242350	
DISCIPLINE CIVIL	
SHEET NAME TTL	
SHEET 1	OF 8

MARTIN P. HELLMANN

P.E. #27046

[illegible]

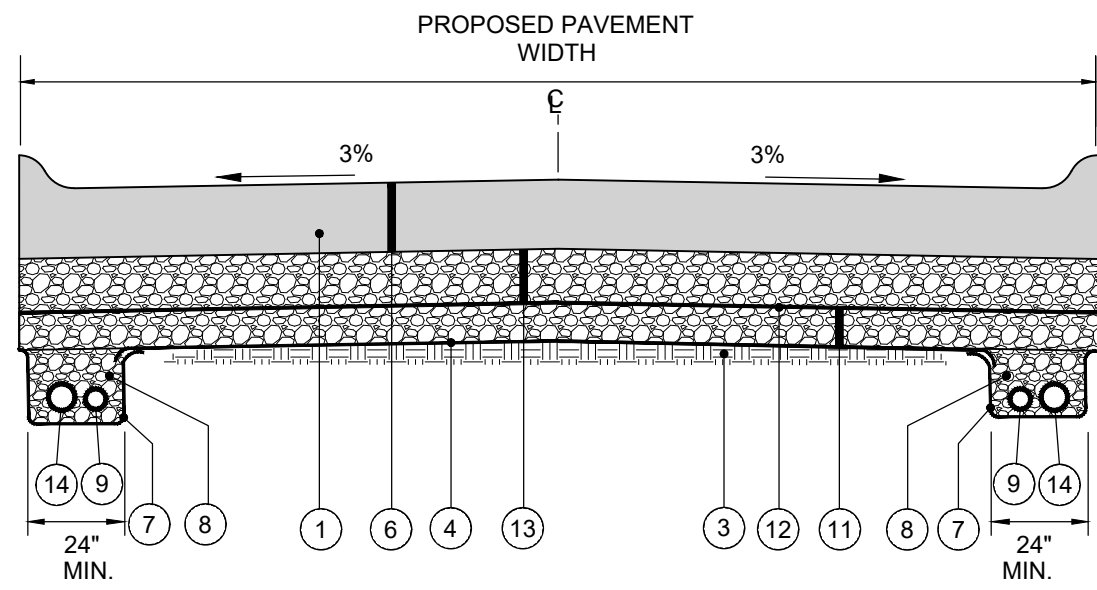
SET THIS SIDE FIRST @
1" ABOVE EX. CURB



CONCRETE PAVEMENT REPLACEMENT TYPICAL SECTION

SHAKER ROAD (11+00 - 14+50)

N.T.S.



GEOGRID REINFORCEMENT AND GRAVEL BASE FOR SUBGRADE REPAIR

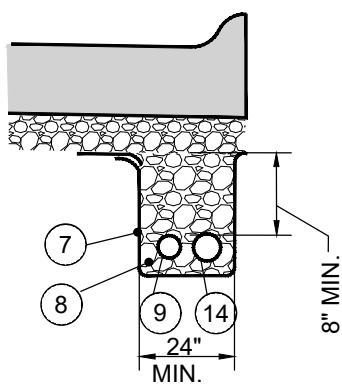
**CONTINGENCY ITEM TO BE USED AT ENGINEER'S DISCRETION

N.T.S.

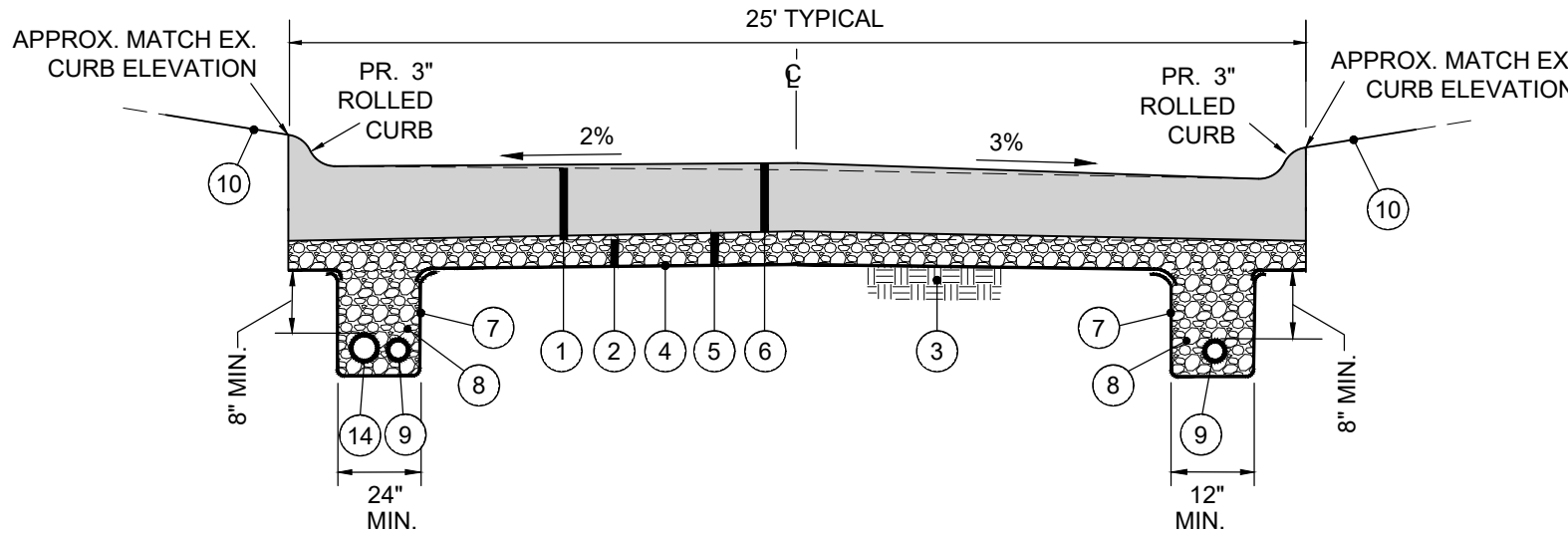
- ITEM 203 - REMOVE EXISTING PAVEMENT.
- ITEM 204 - EXCAVATION FOR GRANULAR BASE
- ITEM 207* - SUBGRADE RESHAPING & COMPACTING. SUBGRADE SHALL BE TRIMMED AND ROLLED SMOOTH FOR DRAINAGE SO GEOTEXTILE CAN BE SPREAD SMOOTH, TAUT AND EVEN BEFORE STONE IS PLACED.
- ITEM 214 - WOVEN GEOTEXTILE, MIRAFI 600X OR EQUIVALENT, ALL OVERLAPS TO BE 18" MIN.
- ITEM 302 - 4" CRUSHED STONE BASE (LESS THAN 7% FINES) COMPACTED TO 100%
- ITEM SPL - 8" PORTLAND CEMENT CONCRETE PAVEMENT - PER KENTON COUNTY SUBDIVISION REGULATIONS WITH 3" ROLLED CURB.
- ITEM SPL - NONWOVEN GEOTEXTILE, MIRAFI 140N OR EQUIVALENT (INCIDENTAL TO PIPE UNDERDRAIN OR EDGE DRAIN)
- ITEM 302 - CLEAN NO. 57 CRUSHED STONE (LESS THAN 3% FINES) (INCIDENTAL TO PIPE UNDERDRAIN OR EDGE DRAIN)
- ITEM 704 - 4" RIGID PVC PERFORATED PIPE UNDERDRAIN
- ITEM SPL - YARD RESTORATION (4" TOPSOIL, SEED AND MULCH) - KEEP TO A MINIMUM.
- ITEM 302/SPL** - 6" CRUSHED STONE BASE (LESS THAN 7% FINES) FOR SUBGRADE REPAIR
- ITEM SPL** - GEOGRID (TENSAR BX 1200 OR EQUIVALENT), PLACE ON TOP 6 INCHES OF CLEAN CRUSHED STONE BASE.
- ITEM SPL** - VARIABLE THICKNESS (4" - 10") CRUSHED STONE BASE (LESS THAN 7% FINES) FOR SUBGRADE REPAIR
- ITEM 704 - 6" SOLID PVC DOWNSPOUT COLLECTOR LINE (WHERE INDICATED ON PLANS). COST FOR ADDITIONAL STONE AND GEOTEXTILE REQUIRED FOR INSTALLATION OF DOWNSPOUT COLLECTOR LINE BEYOND WHAT IS REQUIRED FOR 4" UNDERDRAIN SHALL BE INCLUDED IN THE COST OF 6" DOWNSPOUT COLLECTOR LINE

* SUBGRADE RESHAPING AND COMPACTING SHALL BE PER KTC ITEM 207. A PROOF ROLL WILL BE REQUIRED PRIOR TO PLACING STONE BASE OR CONCRETE PAVEMENT. SOFT OR YIELDING SUITABLE SUBGRADE MATERIAL LACKING PROPER COMPACTION OR MOISTURE CONTENT SHALL BE SCARIFIED, AERATED, DRIED AND RECOMPACTED. THE COST FOR THE ABOVE SHALL BE INCLUDED IN THE UNIT PRICE BID FOR "SUBGRADE RESHAPING AND COMPACTING." SOFT OR YIELDING UNSUITABLE SUBGRADE SHALL BE REMOVED AND REPLACED PER THE "GEOGRID REINFORCEMENT AND GRAVEL BASE FOR SUBGRADE REPAIR" DETAIL, AS DIRECTED BY THE ENGINEER

** CONTINGENCY ITEM TO BE USED ONLY AS DIRECTED BY THE ENGINEER.



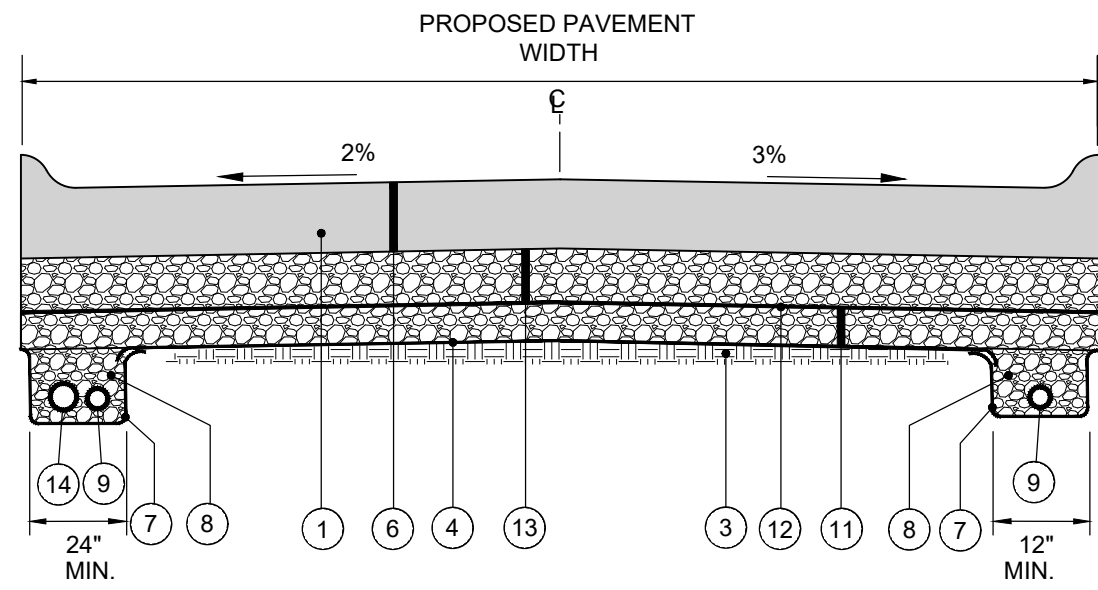
UNDERDRAIN WITH DOWNSPOUT
COLLECTOR LINE



CONCRETE PAVEMENT REPLACEMENT TYPICAL SECTION

MARLO WAY (51+00 - 53+00)

N.T.S.



GEOGRID REINFORCEMENT AND GRAVEL BASE FOR SUBGRADE REPAIR

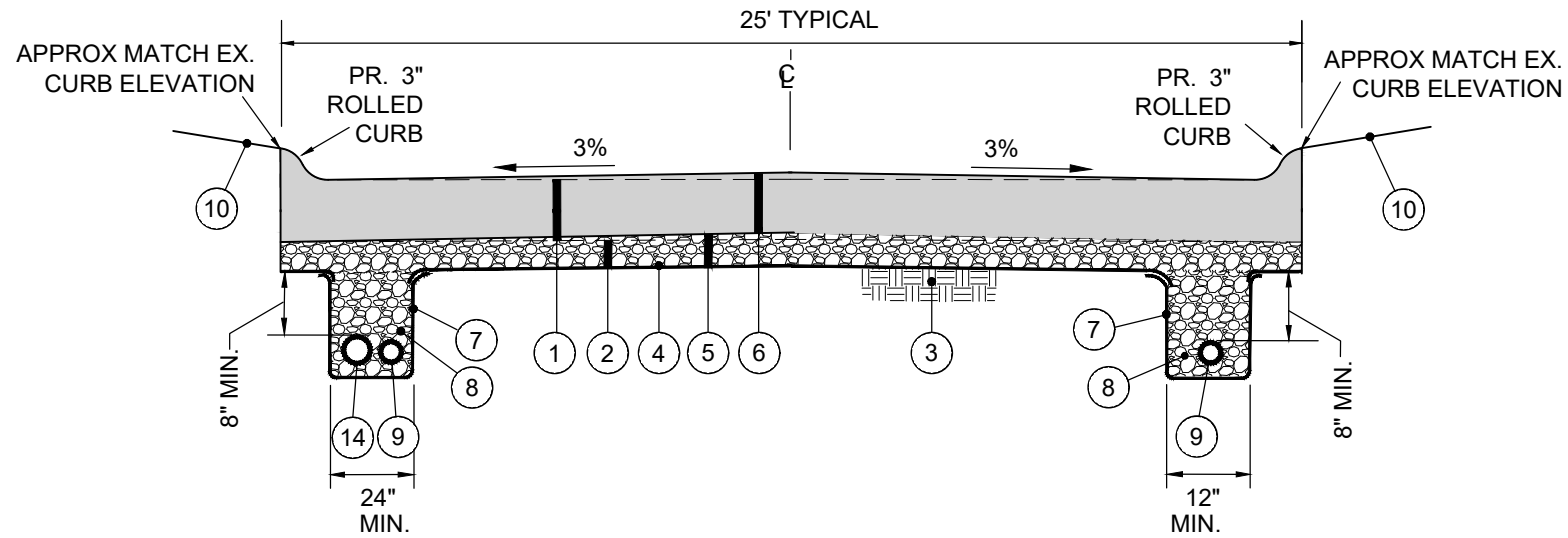
**CONTINGENCY ITEM TO BE USED AT ENGINEER'S DISCRETION

N.T.S.

- ITEM 203 - REMOVE EXISTING PAVEMENT.
- ITEM 204 - EXCAVATION FOR GRANULAR BASE
- ITEM 207* - SUBGRADE RESHAPING & COMPACTING. SUBGRADE SHALL BE TRIMMED AND ROLLED SMOOTH FOR DRAINAGE SO GEOTEXTILE CAN BE SPREAD SMOOTH, TAUT AND EVEN BEFORE STONE IS PLACED.
- ITEM 214 - WOVEN GEOTEXTILE, MIRAFI 600X OR EQUIVALENT, ALL OVERLAPS TO BE 18" MIN.
- ITEM 302 - 4" CRUSHED STONE BASE (LESS THAN 7% FINES) COMPACTED TO 100%
- ITEM SPL - 8" PORTLAND CEMENT CONCRETE PAVEMENT - PER KENTON COUNTY SUBDIVISION REGULATIONS WITH 3" ROLLED CURB.
- ITEM SPL - NONWOVEN GEOTEXTILE, MIRAFI 140N OR EQUIVALENT (INCIDENTAL TO PIPE UNDERDRAIN OR EDGE DRAIN)
- ITEM 302 - CLEAN NO. 57 CRUSHED STONE (LESS THAN 3% FINES) (INCIDENTAL TO PIPE UNDERDRAIN OR EDGE DRAIN)
- ITEM 704 - 4" RIGID PVC PERFORATED PIPE UNDERDRAIN
- ITEM SPL - YARD RESTORATION (4" TOPSOIL, SEED AND MULCH) - KEEP TO A MINIMUM.
- ITEM 302/SPL** - 6" CRUSHED STONE BASE (LESS THAN 7% FINES) FOR SUBGRADE REPAIR
- ITEM SPL** - GEOGRID (TENSAR BX 1200 OR EQUIVALENT), PLACE ON TOP 6 INCHES OF CLEAN CRUSHED STONE BASE.
- ITEM SPL** - VARIABLE THICKNESS (4" - 10") CRUSHED STONE BASE (LESS THAN 7% FINES) FOR SUBGRADE REPAIR
- ITEM 704 - 6" SOLID PVC DOWNSPOUT COLLECTOR LINE (WHERE INDICATED ON PLANS). COST FOR ADDITIONAL STONE AND GEOTEXTILE REQUIRED FOR INSTALLATION OF DOWNSPOUT COLLECTOR LINE BEYOND WHAT IS REQUIRED FOR 4" UNDERDRAIN SHALL BE INCLUDED IN THE COST OF 6" DOWNSPOUT COLLECTOR LINE

* SUBGRADE RESHAPING AND COMPACTING SHALL BE PER KTC ITEM 207. A PROOF ROLL WILL BE REQUIRED PRIOR TO PLACING STONE BASE OR CONCRETE PAVEMENT. SOFT OR YIELDING SUITABLE SUBGRADE MATERIAL LACKING PROPER COMPACTION OR MOISTURE CONTENT SHALL BE SCARIFIED, AERATED, DRIED AND RECOMPACTED. THE COST FOR THE ABOVE SHALL BE INCLUDED IN THE UNIT PRICE BID FOR "SUBGRADE RESHAPING AND COMPACTING." SOFT OR YIELDING UNSUITABLE SUBGRADE SHALL BE REMOVED AND REPLACED PER THE "GEOGRID REINFORCEMENT AND GRAVEL BASE FOR SUBGRADE REPAIR" DETAIL, AS DIRECTED BY THE ENGINEER

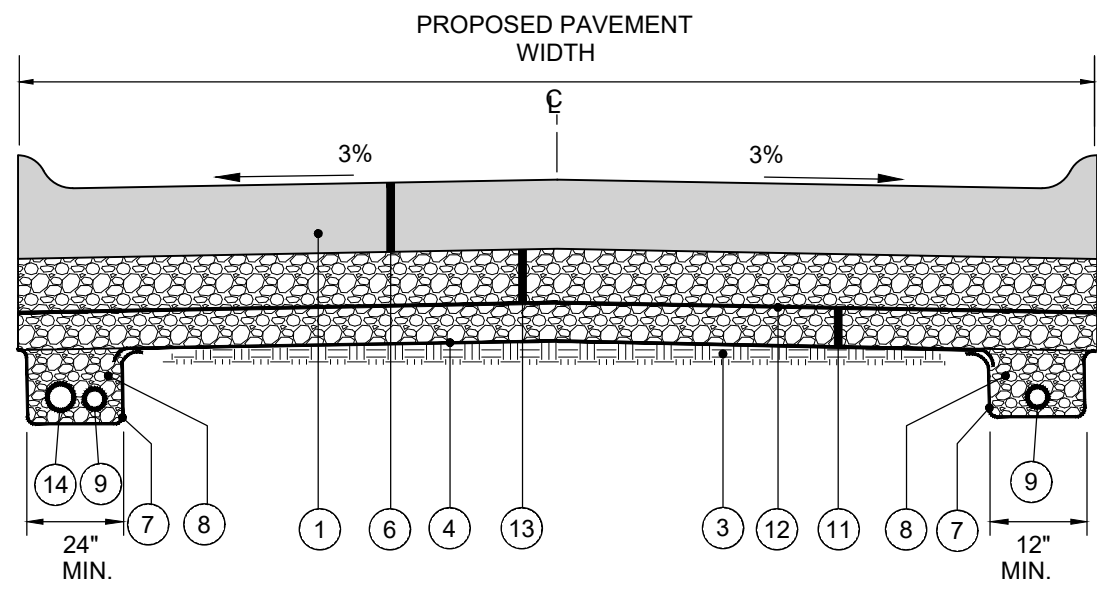
** CONTINGENCY ITEM TO BE USED ONLY AS DIRECTED BY THE ENGINEER.



CONCRETE PAVEMENT REPLACEMENT TYPICAL SECTION

MARLO WAY (53+00 - 57+75)

N.T.S.



GEOGRID REINFORCEMENT AND GRAVEL BASE FOR SUBGRADE REPAIR

**CONTINGENCY ITEM TO BE USED AT ENGINEER'S DISCRETION

N.T.S.

- ITEM 203 - REMOVE EXISTING PAVEMENT.
- ITEM 204 - EXCAVATION FOR GRANULAR BASE
- ITEM 207* - SUBGRADE RESHAPING & COMPACTING. SUBGRADE SHALL BE TRIMMED AND ROLLED SMOOTH FOR DRAINAGE SO GEOTEXTILE CAN BE SPREAD SMOOTH, TAUT AND EVEN BEFORE STONE IS PLACED.
- ITEM 214 - WOVEN GEOTEXTILE, MIRAFI 600X OR EQUIVALENT, ALL OVERLAPS TO BE 18" MIN.
- ITEM 302 - 4" CRUSHED STONE BASE (LESS THAN 7% FINES) COMPACTED TO 100%
- ITEM SPL - 8" PORTLAND CEMENT CONCRETE PAVEMENT - PER KENTON COUNTY SUBDIVISION REGULATIONS WITH 3" ROLLED CURB.
- ITEM SPL - NONWOVEN GEOTEXTILE, MIRAFI 140N OR EQUIVALENT (INCIDENTAL TO PIPE UNDERDRAIN OR EDGE DRAIN)
- ITEM 302 - CLEAN NO. 57 CRUSHED STONE (LESS THAN 3% FINES) (INCIDENTAL TO PIPE UNDERDRAIN OR EDGE DRAIN)
- ITEM 704 - 4" RIGID PVC PERFORATED PIPE UNDERDRAIN
- ITEM SPL - YARD RESTORATION (4" TOPSOIL, SEED AND MULCH) - KEEP TO A MINIMUM.
- ITEM 302/SPL** - 6" CRUSHED STONE BASE (LESS THAN 7% FINES) FOR SUBGRADE REPAIR
- ITEM SPL** - GEOGRID (TENSAR BX 1200 OR EQUIVALENT), PLACE ON TOP 6 INCHES OF CLEAN CRUSHED STONE BASE.
- ITEM SPL** - VARIABLE THICKNESS (4" - 10") CRUSHED STONE BASE (LESS THAN 7% FINES) FOR SUBGRADE REPAIR
- ITEM 704 - 6" SOLID PVC DOWNSPOUT COLLECTOR LINE (WHERE INDICATED ON PLANS). COST FOR ADDITIONAL STONE AND GEOTEXTILE REQUIRED FOR INSTALLATION OF DOWNSPOUT COLLECTOR LINE BEYOND WHAT IS REQUIRED FOR 4" UNDERDRAIN SHALL BE INCLUDED IN THE COST OF 6" DOWNSPOUT COLLECTOR LINE

* SUBGRADE RESHAPING AND COMPACTING SHALL BE PER KTC ITEM 207. A PROOF ROLL WILL BE REQUIRED PRIOR TO PLACING STONE BASE OR CONCRETE PAVEMENT. SOFT OR YIELDING SUITABLE SUBGRADE MATERIAL LACKING PROPER COMPACTION OR MOISTURE CONTENT SHALL BE SCARIFIED, AERATED, DRIED AND RECOMPACTED. THE COST FOR THE ABOVE SHALL BE INCLUDED IN THE UNIT PRICE BID FOR "SUBGRADE RESHAPING AND COMPACTING." SOFT OR YIELDING UNSUITABLE SUBGRADE SHALL BE REMOVED AND REPLACED PER THE "GEOGRID REINFORCEMENT AND GRAVEL BASE FOR SUBGRADE REPAIR" DETAIL, AS DIRECTED BY THE ENGINEER

** CONTINGENCY ITEM TO BE USED ONLY AS DIRECTED BY THE ENGINEER.

verdantas

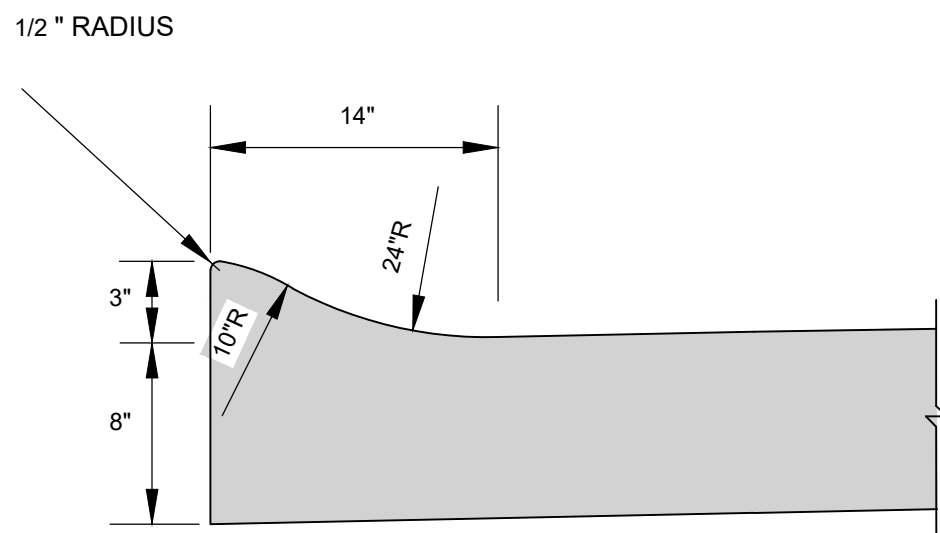
2161 CHAMBER CENTER DRIVE
FORT MITCHELL, KENTUCKY 41017
TEL: (609) 525-0544
WWW.VERDANTAS.COM

DATE	REVISION	NO	BID	ISSUED FOR:
			02/13/2025	AS SHOWN
			AWAL	AWAL
			AWAL	MHEL

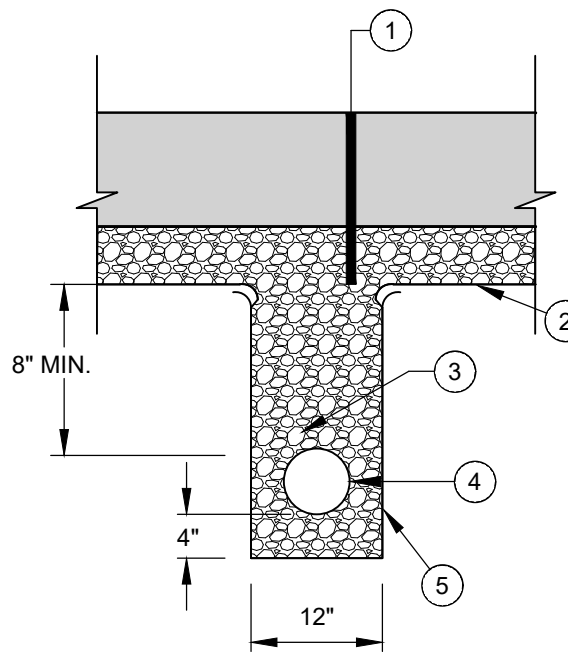
MARLO WAY AND SHAKER ROAD
RECONSTRUCTION
- CITY OF LAKESIDE PARK, KY 41017 -

DETAILS 1

PROJECT NO.	2422350
DISCIPLINE	CIVIL
SHEET NAME	DTL-01
SHEET	OF
3	8



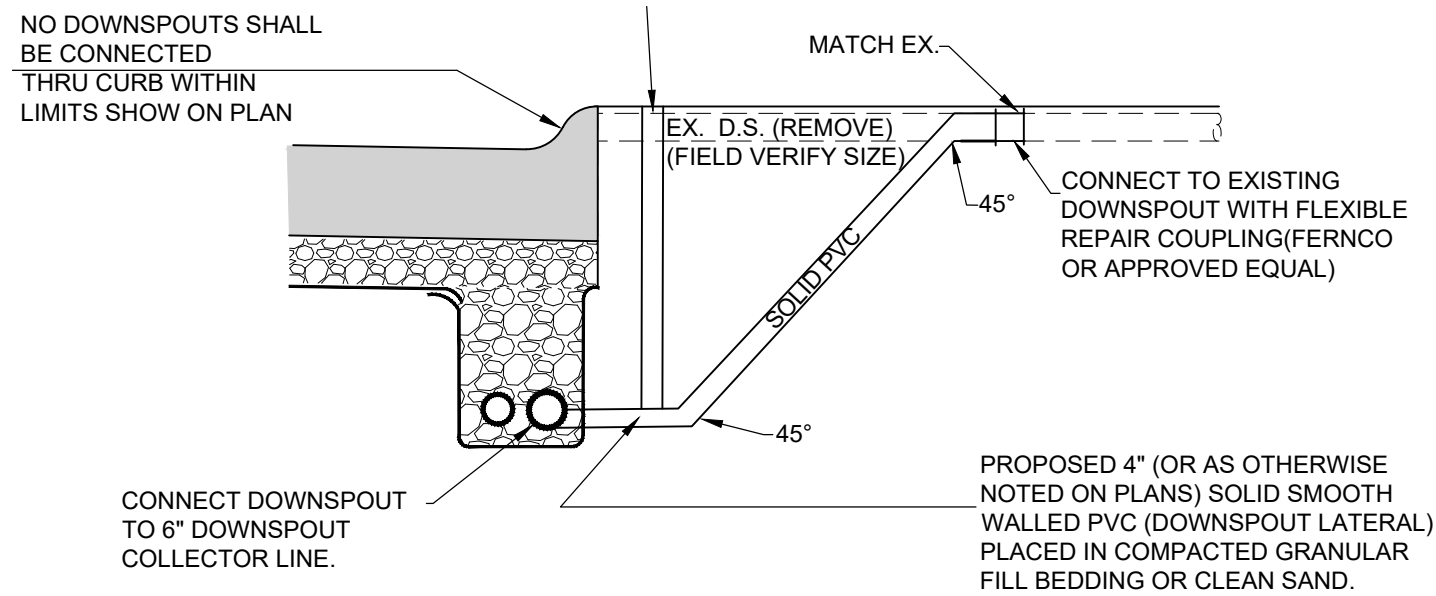
3" ROLLED CURB DETAIL
(INTEGRAL TO CONCRETE PAVEMENT)
N.T.S.



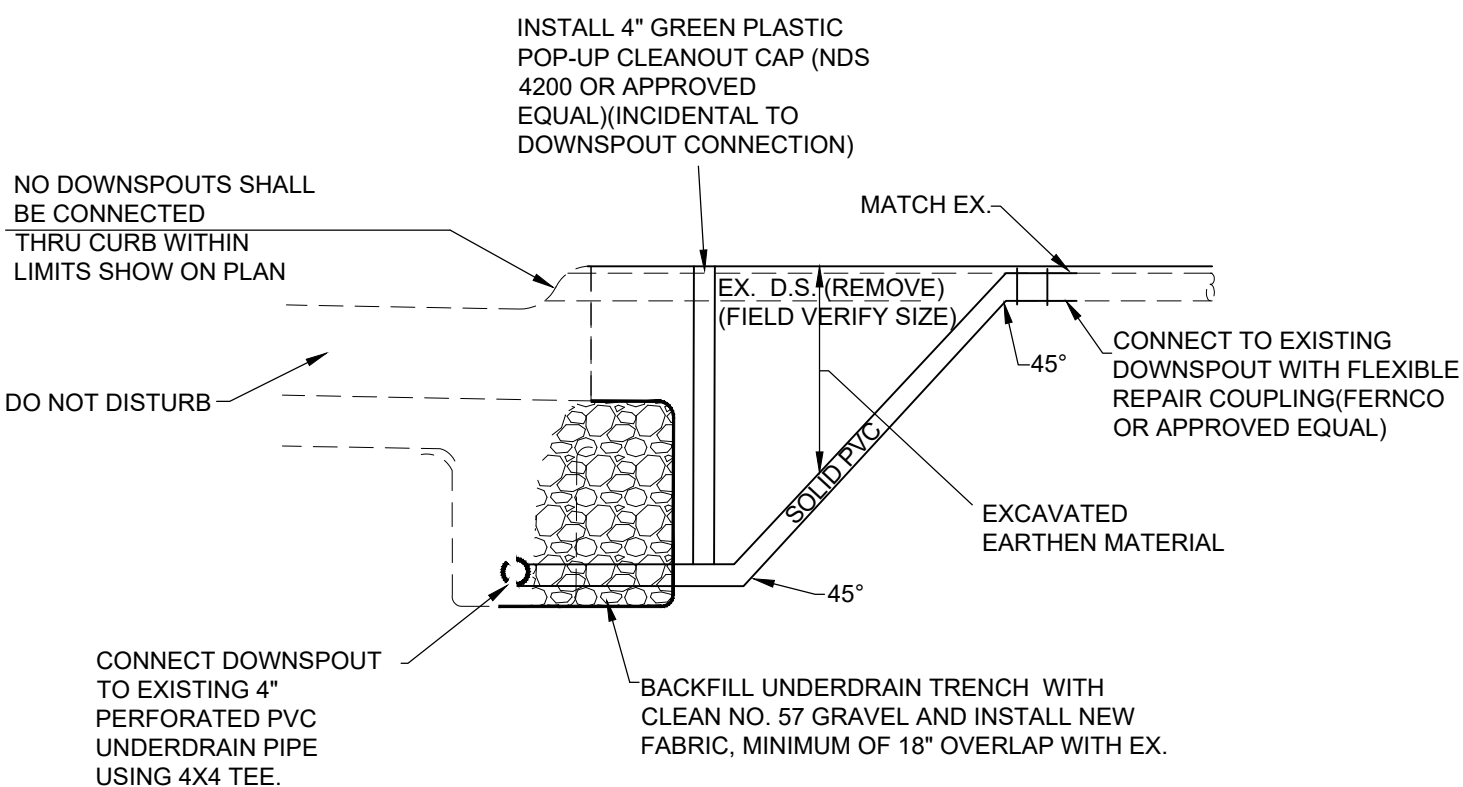
TRANSVERSE UNDERDRAIN DETAIL
N.T.S.

- 1 PROPOSED PAVEMENT. SEE TYPICAL SECTION
- 2 ITEM 304 - WOVEN GEOTEXTILE, MIRAFI 600X OR EQUIVALENT
- 3 ITEM 302 - CLEAN NO. 57 CRUSHED STONE (LESS THAN 3% FINES)
- 4 4" PERFORATED UNDERDRAIN @ 1% MIN GRADE
- 5 ITEM 304 - MIRAFI 140N OR EQUIVALENT NON WOVEN DRAINAGE GEOTEXTILE

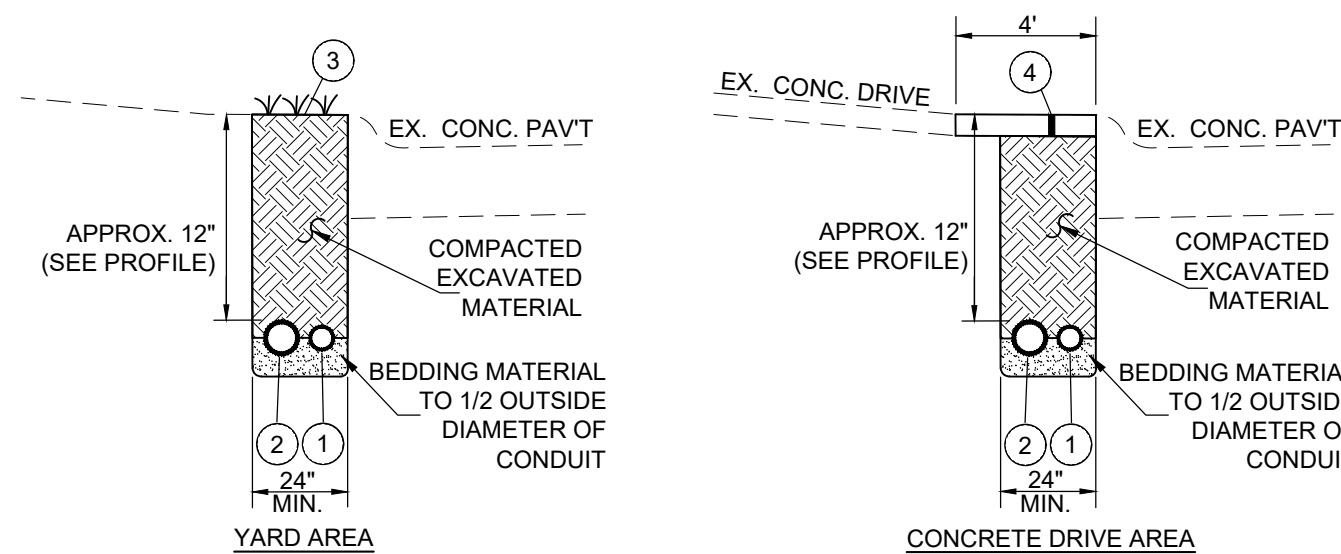
NOTE: ALL COST FOR CONSTRUCTING THE UNDERDRAIN PER DETAIL SHALL BE INCIDENTAL TO THE UNIT PRICE BID FOR ITEM 704 - 4" UNDERDRAIN



DOWNSPOUT CONNECTION TO DOWNSPOUT COLLECTOR LINE



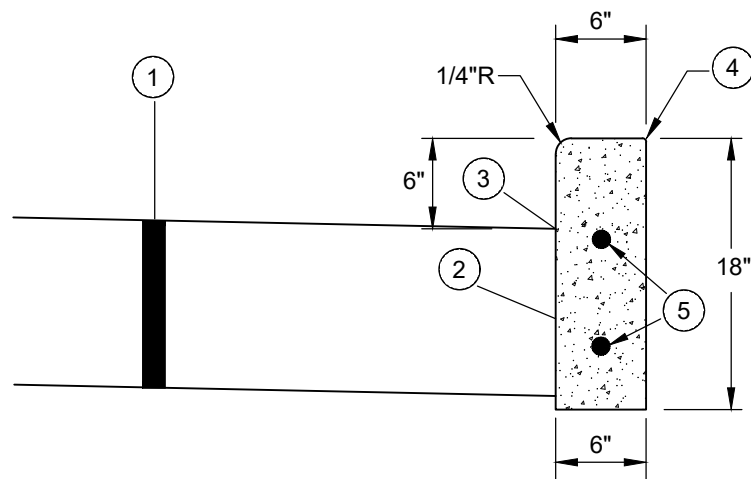
DOWNSPOUT CONNECTION TO EXISTING UNDERDRAIN
(SHAKER STA. 16+50 - 17+75)



NOTE: ALL COST FOR CONSTRUCTING THE 8" SOLID WALL PVC PIPE INCLUDING FITTINGS AND CORING EXISTING CATCH BASIN SHALL BE INCIDENTAL TO UNIT PRICE BID FOR ITEM SPL - EDGE DRAIN EXTENSION.

EDGE DRAIN & DOWNSPOUT COLLECTION LINE EXTENSION

- 1 4" SOLID WALL PVC PIPE FOR UNDERDRAIN OUTLET
- 2 6" SOLID WALL PVC PIPE FOR DOWNSPOUT COLLECTOR LINE OUTLET
- 3 ITEM SPL - YARD RESTORATION (4" TOPSOIL, SEED AND MULCH) (SEPARATE PAY ITEM)
- 4 CONCRETE DRIVEWAY REPLACEMENT (SEE DETAIL) (SEPARATE PAY ITEM)

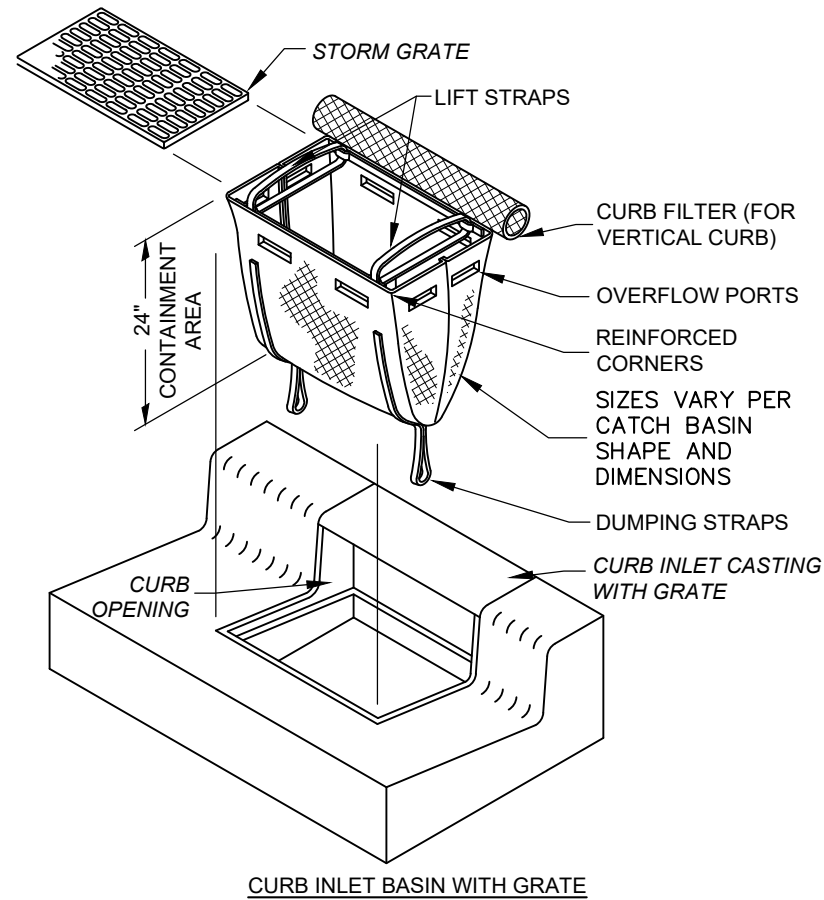


- 1 DRIVEWAY REPLACEMENT, ASPHALT OR CONCRETE (SEE PLANS)
- 2 SAWCUT & REMOVE EXISTING CURB
- 3 APPLY HOT ASPHALT SEALER WHERE ASPHALT MEETS CURB (INCIDENTAL TO ITEM 402), WHEN ADJACENT TO ASPHALT DRIVEWAY.
- 4 TOP OF REPLACEMENT CURB TO MATCH LINE & GRADE OF EXIST. CURB
- 5 8" DIA. DOWELS 18" LONG - DRILL 9" MIN. INTO EXIST. CURB

NOTE: CONTRACTOR SHALL FILL BEHIND CURB TO THE TOP OF THE CURB W/ TOPSOIL AND RESTORE YARD W/ SEED/MULCH. THE COST FOR TOPSOIL, SEED/MULCH SHALL BE INCIDENTAL TO THE UNIT PRICE BID FOR CURB REPLACEMENT.

CONCRETE SHALL BE PER THE LATEST EDITION OF THE KENTON COUNTY SUBDIVISION REGULATIONS

6" VERTICAL CURB REPLACEMENT N.T.S.

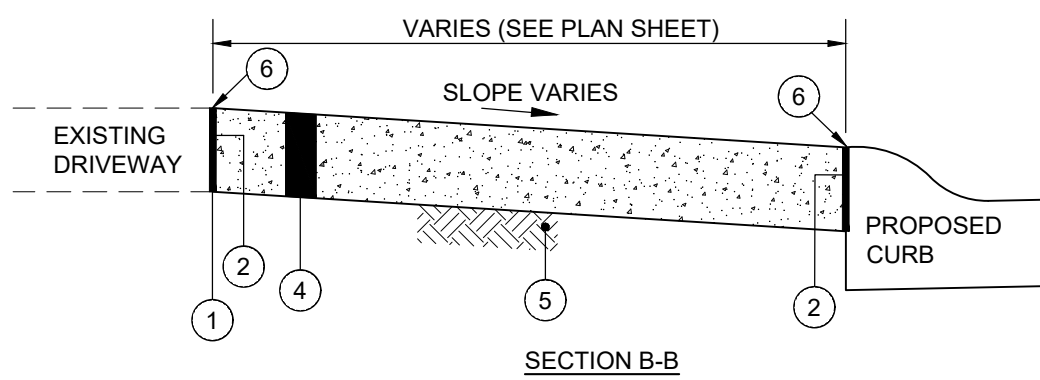


IP STORM DRAIN INLET PROTECTION DETAIL
N.T.S.

- 1 CONCRETE BRICK OR SLAB BLOCK MAY BE USED IN PLACE OF PRECAST OR CAST IN PLACE CONCRETE. BLOCK OR BRICK SIDEWALLS SHALL BE 8" NOMINAL THICKNESS W/ HORIZONTAL REINFORCEMENT EVERY 16 INCHES. PARGE WITH 1/2" MORTAR, INSIDE AND OUT.
- 2 SINGLE INLET: FRAME, GRATE AND CURB PLATE - NEENAH R-3289-HV OR APPROVED EQUAL.
- 3 DOUBLE INLET: FRAME, GRATE AND CURB PLATE - NEENAH R-3288-HV2 OR APPROVED EQUAL.
- 4 5-6 X 12.5 X 6" STEEL BEAM (USE WITH SEPERATE OR BOLTED INLETS).
- 5 4" MIN. DEPTH 4000 PSI AE CONCRETE WITH SCRIBED INVERT.
- 6 6" MIN. DEPTH 4000 PSI AE CONCRETE EXTENDED MIN. 8" BEYOND EXTERIOR OF BOX.
- 7 12" MINIMUM DIAMETER PIPE.
- 8 SEAL ALL LIFTING HOLES AND JOINTS (INSIDE & OUT).

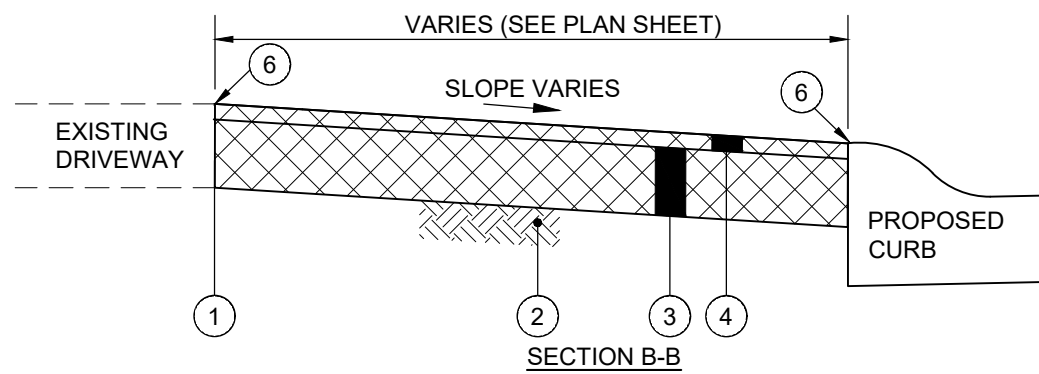
STANDARD CURB INLET
N.T.S.

REFER TO SD1 SPEC. 02630
FOR ADDITIONAL DETAILS



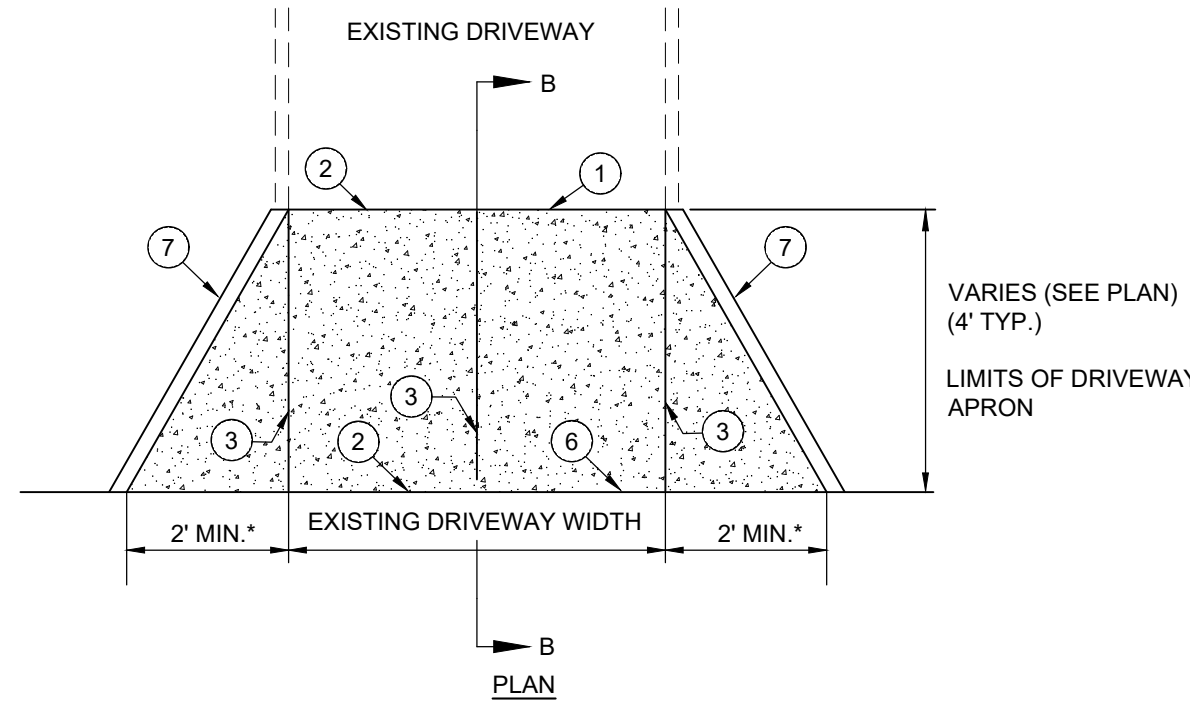
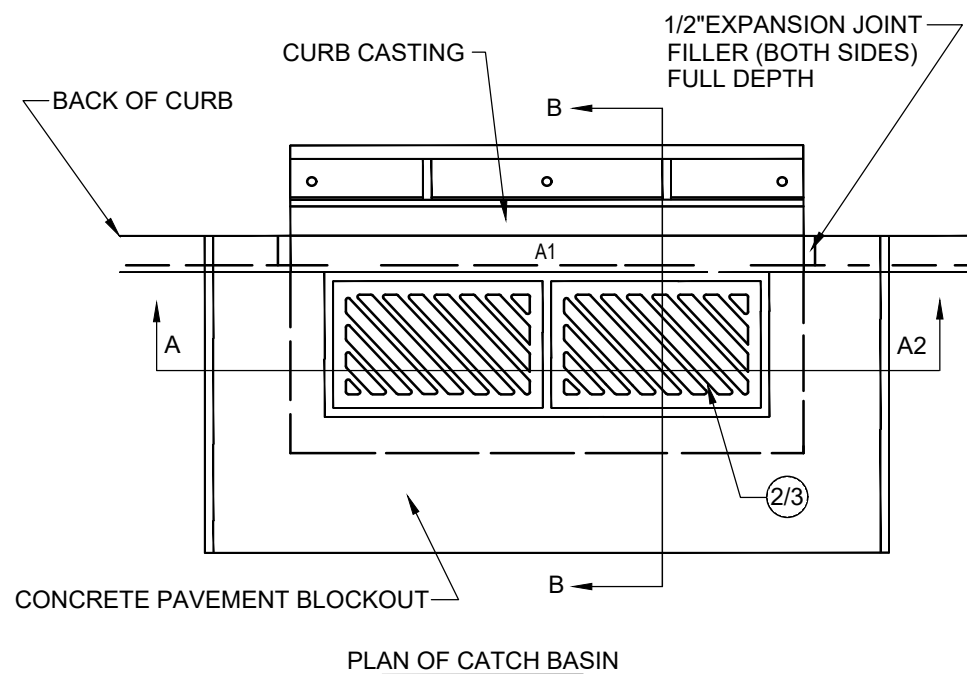
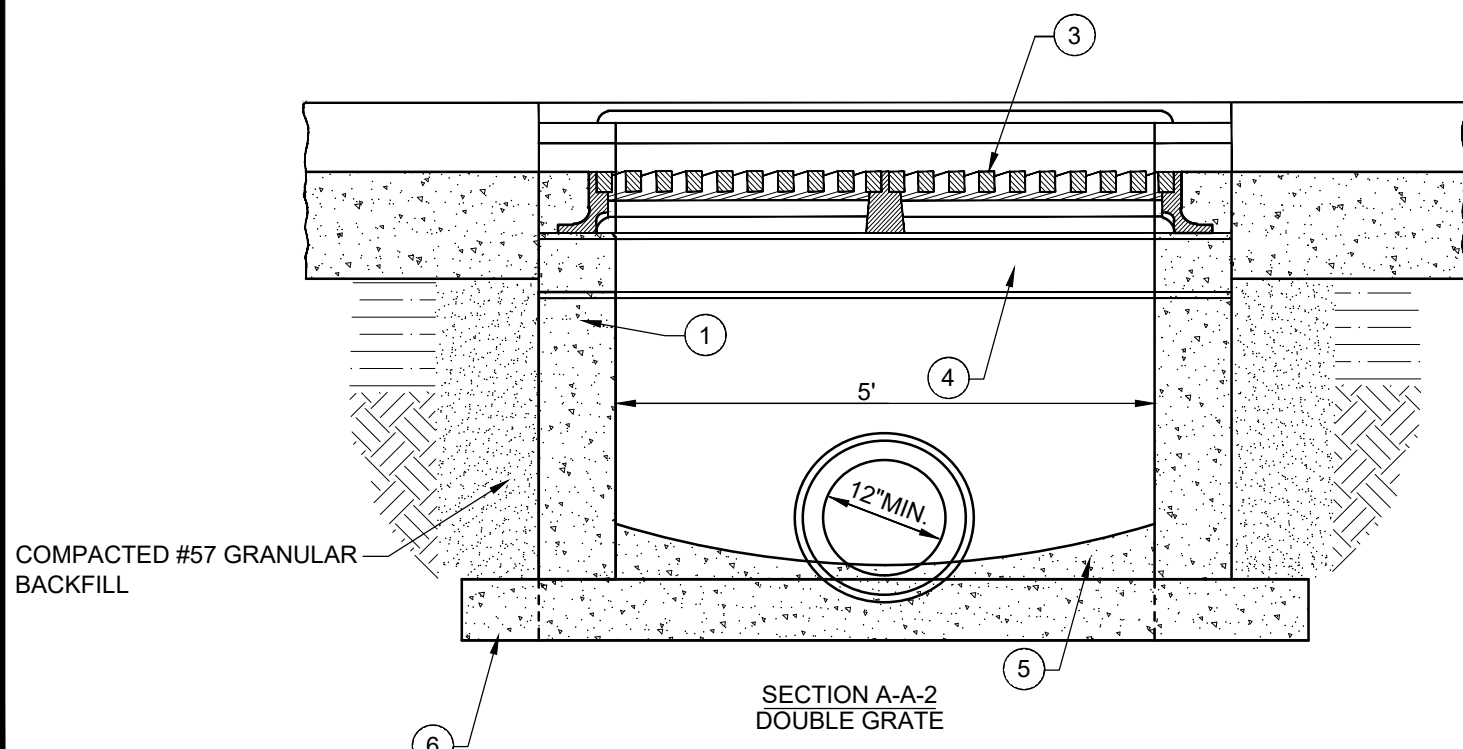
- 1 SAWCUT AT NEAREST JOINT AND REMOVE EXISTING CONCRETE PAVEMENT (INCIDENTAL TO ITEM SPL)
- 2 1" PREFORMED EXPANSION JOINT MATERIAL (FLEXIBLE FOAM-CERAMAR BY W.R. MEADOWS OR APPROVED EQUAL) - INCIDENTAL TO DRIVEWAY REPLACEMENT
- 3 TOOLED JOINT
- 4 ITEM SPL - 6" CONCRETE DRIVEWAY/APRON (PER KENTON COUNTY SUBDIVISION REGULATIONS)
- 5 ITEM 207 - COMPACTED SUBGRADE (INCIDENTAL TO ITEM SPL - 6" CONCRETE DRIVEWAY/APRON)
- 6 SEAL JOINT WITH GRAY SELF LEVELING SEALANT (SIKA FLEX OR APPROVED EQUAL)
- 7 REPLACE CONCRETE CURB WHERE IT CURRENTLY EXISTS (SEE PLANS), MATCH EXISTING. INCIDENTAL TO DRIVEWAY REPLACEMENT.

CONCRETE DRIVEWAY REPLACEMENT
W/ CURB (NO SIDEWALK) N.T.S.



- 1 SAWCUT AND REMOVE EXISTING DRIVEWAY (COST SHALL BE INCIDENTAL TO THE ASPHALT DRIVEWAY REPLACEMENT)
- 2 ITEM 207 - SUBGRADE RESHAPING AND COMPACTING (INCIDENTAL TO ASPHALT DRIVE REPLACEMENT)
- 3 ITEM 402 / 403 - 6" ASPHALT CONCRETE BASE COURSE - RESIDENTIAL DRIVE
- 4 ITEM 402 / 403 - 1.5" ASPHALT CONCRETE SURFACE COURSE
- 5 REPLACE CONCRETE CURB WHERE IT CURRENTLY EXISTS (SEE PLANS). MATCH EXISTING. INCIDENTAL TO DRIVEWAY REPLACEMENT.
- 6 SEAL JOINT WIDTH HOT POURED JOINT SEALANT (INCIDENTAL TO ASPHALT DRIVEWAY REPLACEMENT)

ASPHALT DRIVEWAY REPLACEMENT
WITH CURB (NO SIDEWALK) N.T.S.

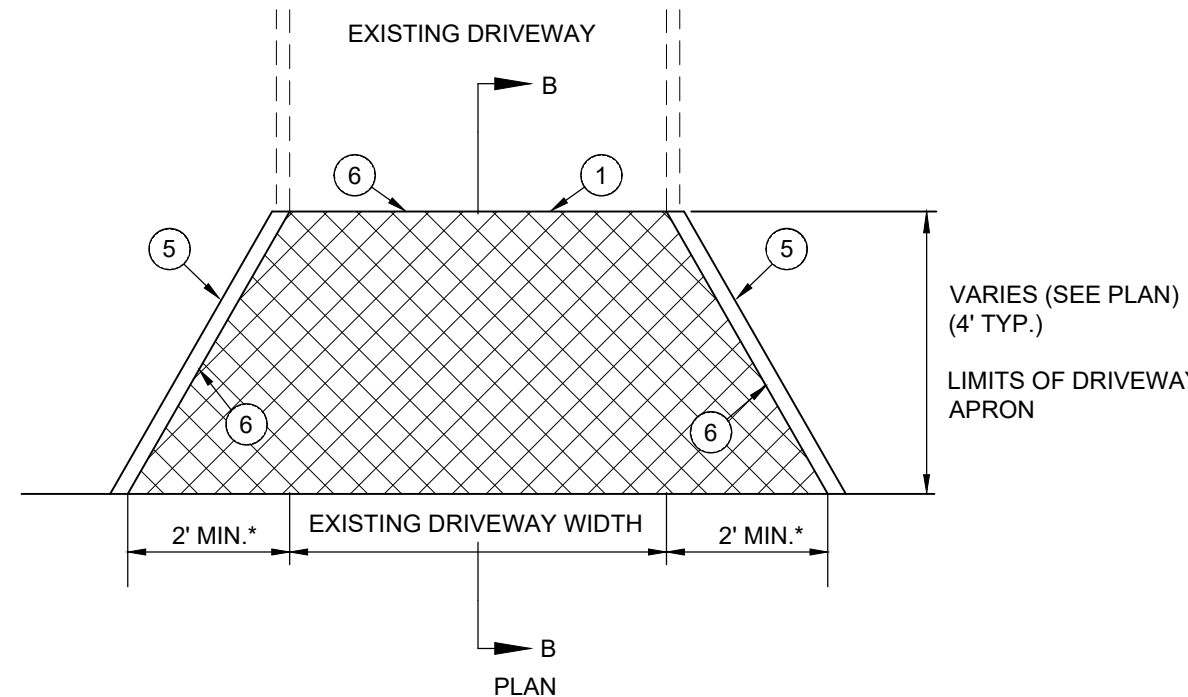


NOTE:

1. ANY YARD AREA DISTURBED BY THE CONSTRUCTION OF THE DRIVEWAY APRON SHALL BE RESTORED WITH TOPSOIL, SEED AND MULCH (INCIDENTAL TO CONCRETE DRIVEWAY APRON REPLACEMENT).

2. ALL EXCAVATION REQUIRED FOR THE PLACEMENT OF THE PROPOSED DRIVEWAY SHALL BE INCIDENTAL TO CONCRETE DRIVEWAY REPLACEMENT BID ITEM.

* EXCEPT TO AVOID MAILBOX OR POLE.

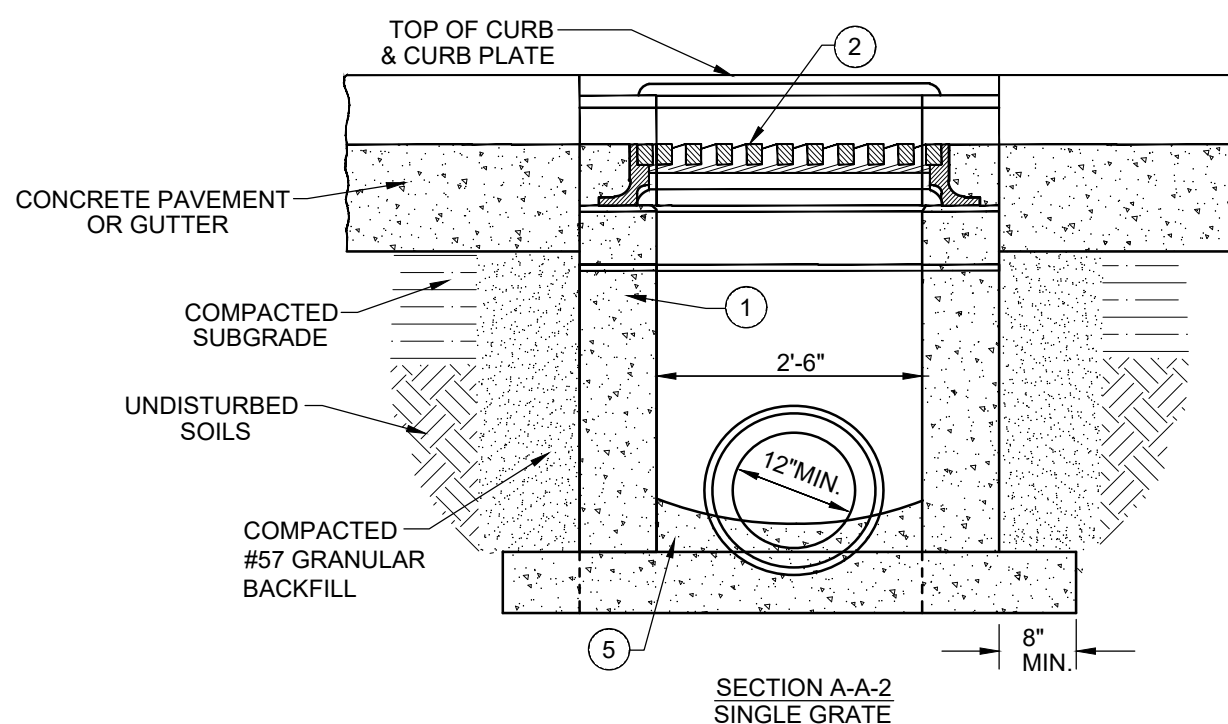
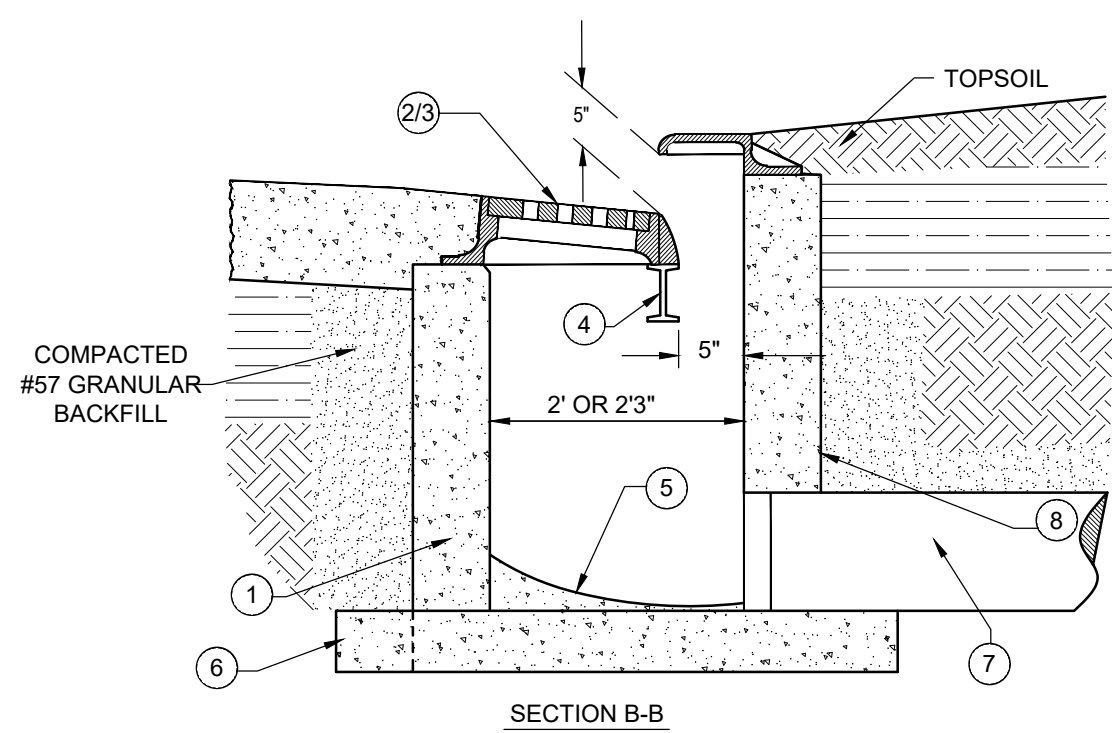


NOTE:

1. ANY YARD AREA DISTURBED BY THE CONSTRUCTION OF THE DRIVEWAY APRON SHALL BE RESTORED WITH TOPSOIL, SEED AND MULCH (INCIDENTAL TO ASPHALT DRIVEWAY APRON REPLACEMENT).

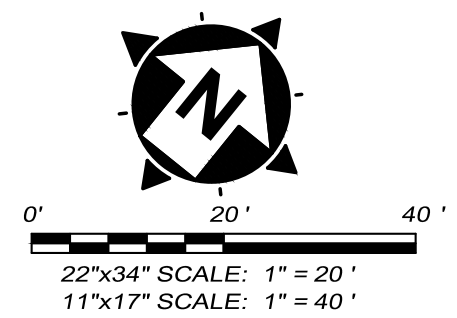
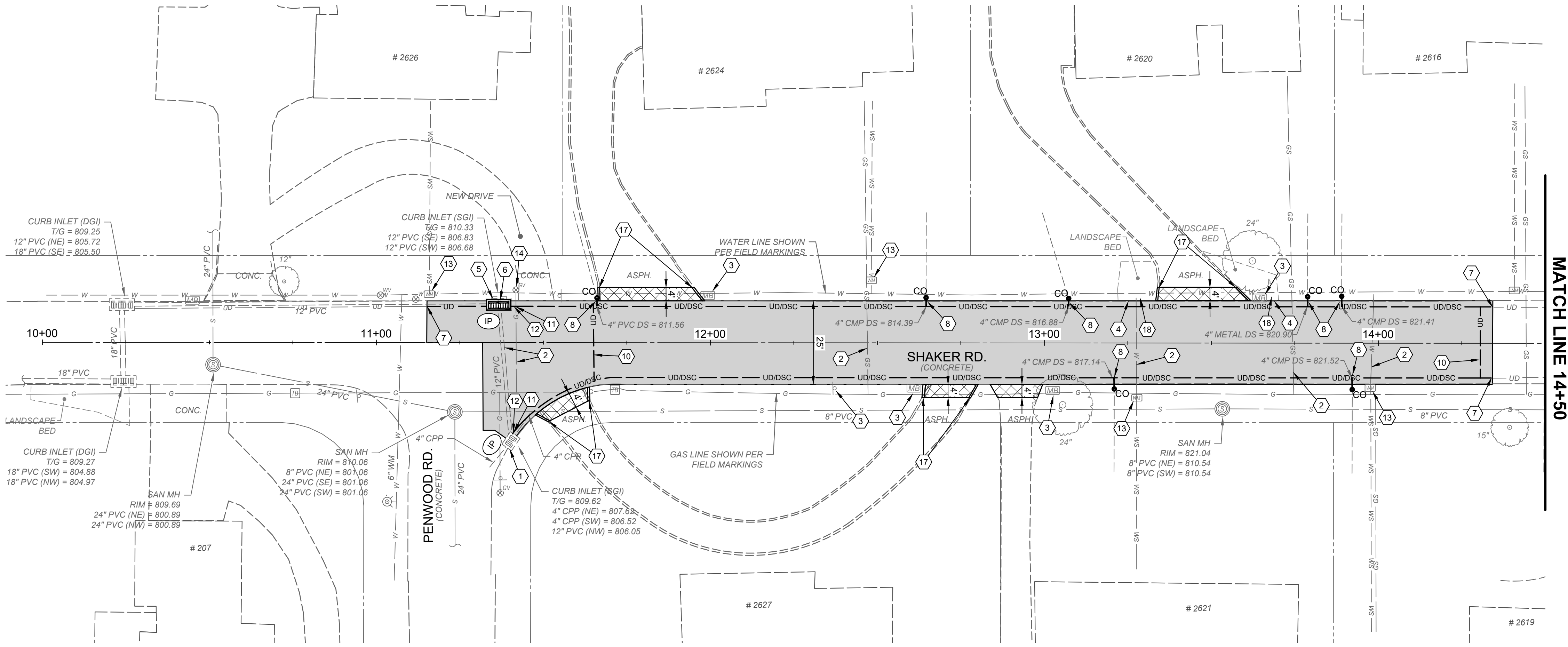
2. ALL EXCAVATION REQUIRED FOR THE PLACEMENT OF THE PROPOSED DRIVEWAY SHALL BE INCIDENTAL TO ASPHALT DRIVEWAY REPLACEMENT BID ITEM.

* EXCEPT TO AVOID MAILBOX OR POLE.



DATE	REVISION	NO	BID	ISSUED FOR:
			02/13/2025	
			AS SHOWN	
			AWAL	
			AWAL	
			MHEL	

PROJECT NO.	242350
DISCIPLINE	CIVIL
SHEET NAME	DTL-02
SHEET	OF
4	8

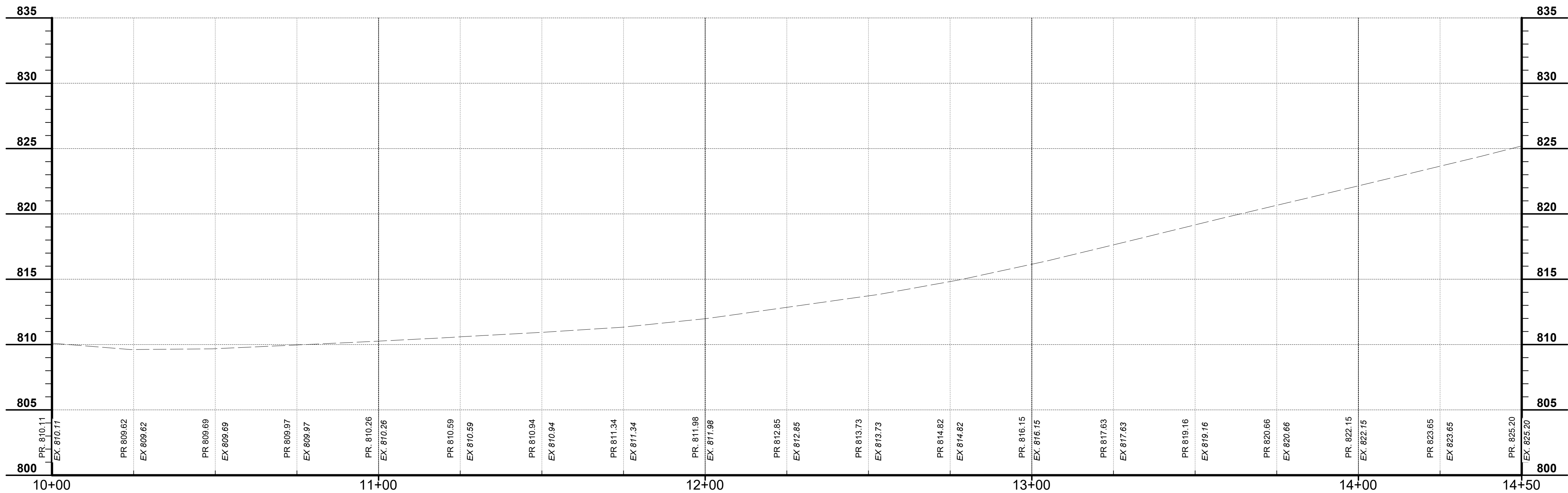


CONSTRUCTION NOTES

- DO NOT DISTURB
- CONTRACTOR TO EXPOSE UTILITY PRIOR TO CONSTRUCTION TO DETERMINE ACTUAL LOCATION. NOTIFY ENGINEER IMMEDIATELY OF ANY CONFLICTS (INCIDENTAL TO CONTRACT).
- REMOVE, SALVAGE & REINSTALL/RELOCATE EXIST. SIGN OR MAILBOX (INCIDENTAL TO ITEM 202 - CLEARING AND GRUBBING).
- REMOVE, SALVAGE AND REINSTALL LANDSCAPE BLOCK (INCIDENTAL TO CLEARING AND GRUBBING).
- REMOVE EXISTING STORM SEWER STRUCTURE.
- INSTALL STANDARD DOUBLE GRATE CURB INLET PER DETAIL. CONNECT TO EXISTING PIPE OR PROPOSED PIPE AS SHOWN ON PLAN.
- CONNECT PROPOSED UNDERDRAIN TO EXISTING UNDERDRAIN (INCIDENTAL TO UNDERDRAIN ITEM).
- CONNECT EXISTING DOWNSPOUT TO COLLECTOR LINE. INSTALL CLEANOUT PER DETAIL.
- CONNECT EXISTING DOWNSPOUT TO EXISTING UNDERDRAIN. INSTALL CLEANOUT PER DETAIL. DO NOT DISTURB PAVEMENT.
- INSTALL TRANSVERSE UNDERDRAIN PER DETAIL (SHEET 2). CONNECT TO PROPOSED EDGE DRAIN.
- CONNECT DOWNSPOUT COLLECTOR LINE TO CURB INLET (INCIDENTAL TO DOWNSPOUT COLLECTOR ITEM).
- CONNECT PROP. UNDERDRAIN TO CURB INLET (INCIDENTAL TO UNDERDRAIN ITEM).
- ADJUST WATER VALVE OR METER TO FINISHED GRADE.
- ADJUST GAS VALVE OR BOX TO FINISHED GRADE.
- ADJUST SANITARY MANHOLE TO GRADE PER SD1 SPECIFICATIONS.
- EDGE DRAIN AND DOWNSPOUT COLLECTOR LINE BEHIND CURB PER DETAIL.
- INSTALL VERTICAL CURB PER DETAIL TO MATCH EXISTING CURB. INCIDENTAL TO DRIVEWAY REPLACEMENT ITEM.
- RESTORE LANDSCAPED AREA WITH RED HARDWOOD MULCH TO MATCH EXISTING. INCIDENTAL TO YARD RESTORATION.
- RESTORE LANDSCAPED AREA WITH BLACK HARDWOOD MULCH TO MATCH EXISTING. INCIDENTAL TO YARD RESTORATION.
- RESTORE LANDSCAPED AREA WITH DECORATIVE ROCK TO MATCH EXISTING. INCIDENTAL TO YARD RESTORATION.

HATCH LEGEND

- 8" PROPOSED PAVEMENT REPLACEMENT WITH GRANULAR BASE - SEE TYPICAL SECTIONS
- 6" CONCRETE DRIVEWAY REPLACEMENT - SEE DETAIL SHEET
- ASPHALT DRIVEWAY REPLACEMENT - SEE DETAIL SHEET



SCALE:
H: 1" = 20'
V: 1" = 5'

verdantas

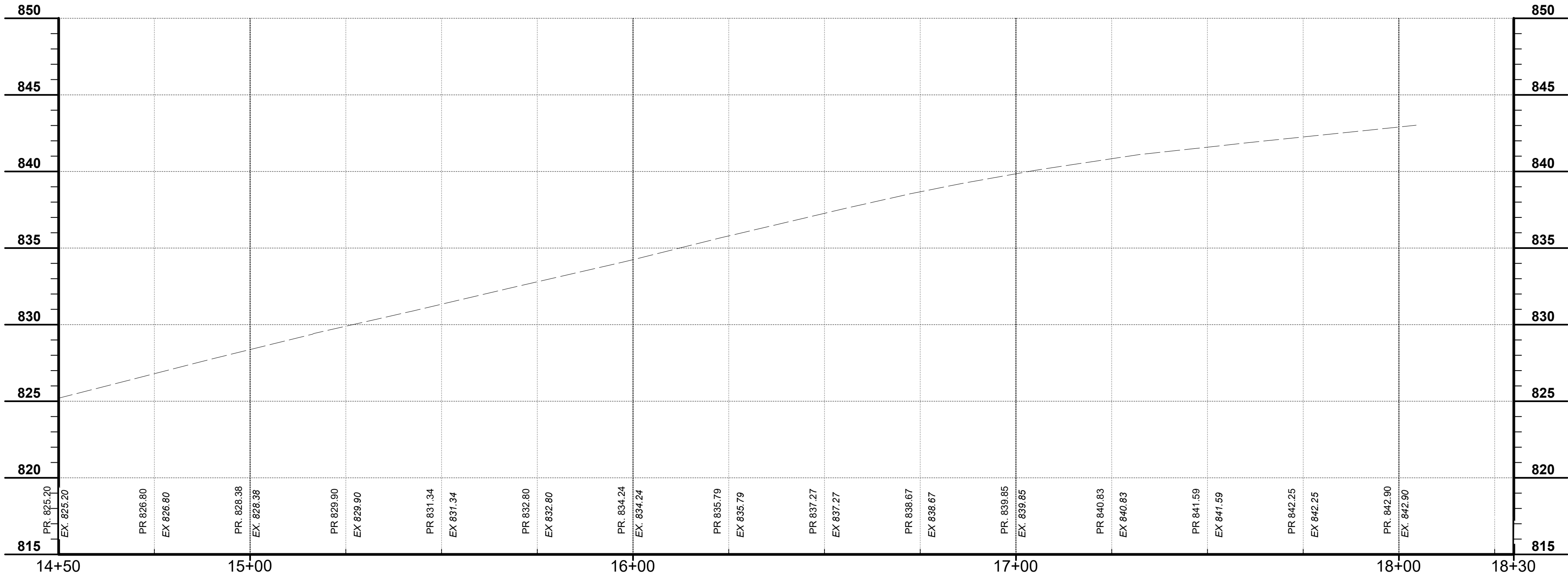
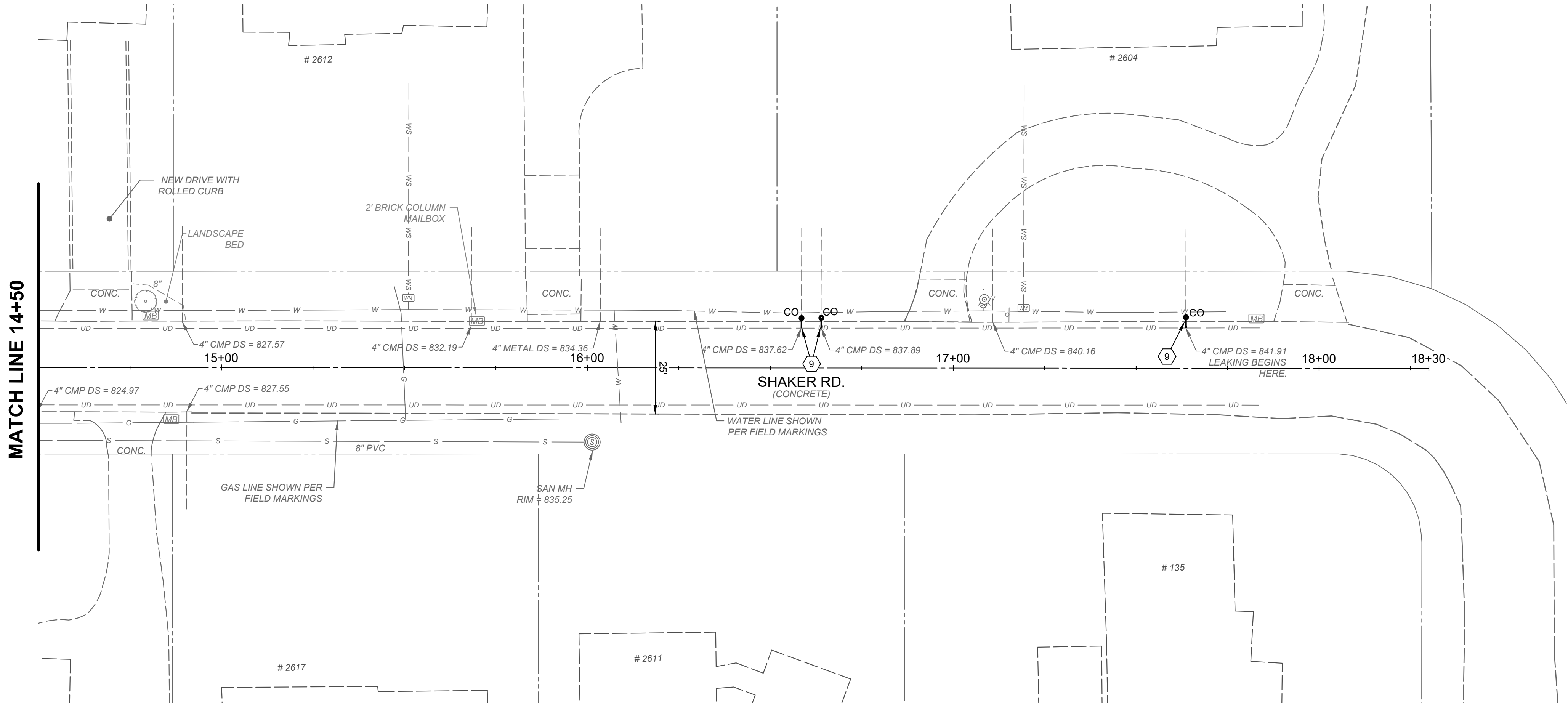
2161 CHAMBER CENTER DRIVE
FORT MITCHELL, KENTUCKY 41017
TEL: (609) 525-0544
WWW.VERDANTAS.COM

ISSUED FOR:	BID	NO	REVISION	DATE
ISSUE DATE:	02/13/2025			
SCALE:	1" = 20'			
DESIGNED BY:	AWAL			
DRAWN BY:	AWAL			
CHECKED BY:	MHEL			

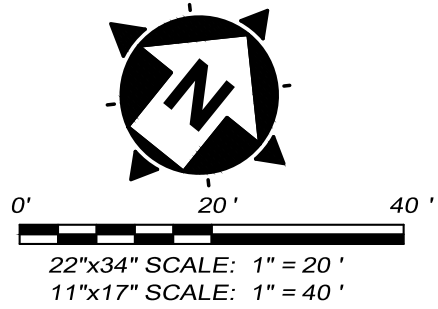
MARLO WAY AND SHAKER ROAD
RECONSTRUCTION
- CITY OF LAKESIDE PARK, KY 41017 -

SHAKER RD PLAN & PROFILE
10+00 TO 14+25

PROJECT NO.	242350
DISCIPLINE	CIVIL
SHEET NAME	PNP-01
SHEET	OF
5	8



SCALE:
H: 1" = 20'
V: 1" = 5'



CONSTRUCTION NOTES

- DO NOT DISTURB
- CONTRACTOR TO EXPOSE UTILITY PRIOR TO CONSTRUCTION TO DETERMINE ACTUAL LOCATION. NOTIFY ENGINEER IMMEDIATELY OF ANY CONFLICTS (INCIDENTAL TO CONTRACT).
- REMOVE, SALVAGE & REINSTALL/RELOCATE EXIST. SIGN OR MAILBOX (INCIDENTAL TO ITEM 202 - CLEARING AND GRUBBING).
- REMOVE, SALVAGE AND REINSTALL LANDSCAPE BLOCK (INCIDENTAL TO CLEARING AND GRUBBING).
- REMOVE EXISTING STORM SEWER STRUCTURE.
- INSTALL STANDARD DOUBLE GRATE CURB INLET PER DETAIL. CONNECT TO EXISTING PIPE OR PROPOSED PIPE AS SHOWN ON PLAN.
- CONNECT PROPOSED UNDERDRAIN TO EXISTING UNDERDRAIN (INCIDENTAL TO UNDERDRAIN ITEM).
- CONNECT EXISTING DOWNSPOUT TO COLLECTOR LINE. INSTALL CLEANOUT PER DETAIL.
- CONNECT EXISTING DOWNSPOUT TO EXISTING UNDERDRAIN. INSTALL CLEANOUT PER DETAIL. DO NOT DISTURB PAVEMENT.
- INSTALL TRANSVERSE UNDERDRAIN PER DETAIL (SHEET 2). CONNECT TO PROPOSED EDGE DRAIN.
- CONNECT DOWNSPOUT COLLECTOR LINE TO CURB INLET (INCIDENTAL TO DOWNSPOUT COLLECTOR ITEM).
- CONNECT PROP. UNDERDRAIN TO CURB INLET (INCIDENTAL TO UNDERDRAIN ITEM).
- ADJUST WATER VALVE OR METER TO FINISHED GRADE.
- ADJUST GAS VALVE OR BOX TO FINISHED GRADE.
- ADJUST SANITARY MANHOLE TO GRADE PER SD1 SPECIFICATIONS.
- EDGE DRAIN AND DOWNSPOUT COLLECTOR LINE BEHIND CURB PER DETAIL.
- INSTALL VERTICAL CURB PER DETAIL TO MATCH EXISTING CURB. INCIDENTAL TO DRIVEWAY REPLACEMENT ITEM.
- RESTORE LANDSCAPED AREA WITH RED HARDWOOD MULCH TO MATCH EXISTING. INCIDENTAL TO YARD RESTORATION.
- RESTORE LANDSCAPED AREA WITH BLACK HARDWOOD MULCH TO MATCH EXISTING. INCIDENTAL TO YARD RESTORATION.
- RESTORE LANDSCAPED AREA WITH DECORATIVE ROCK TO MATCH EXISTING. INCIDENTAL TO YARD RESTORATION.

HATCH LEGEND

- 8" PROPOSED PAVEMENT REPLACEMENT WITH GRANULAR BASE - SEE TYPICAL SECTIONS
- 6" CONCRETE DRIVEWAY REPLACEMENT - SEE DETAIL SHEET
- ASPHALT DRIVEWAY REPLACEMENT - SEE DETAIL SHEET

verdantas

2161 CHAMBER CENTER DRIVE
FORT MITCHELL, KENTUCKY 41017
TEL: (699) 525-0544
WWW.VERDANTAS.COM

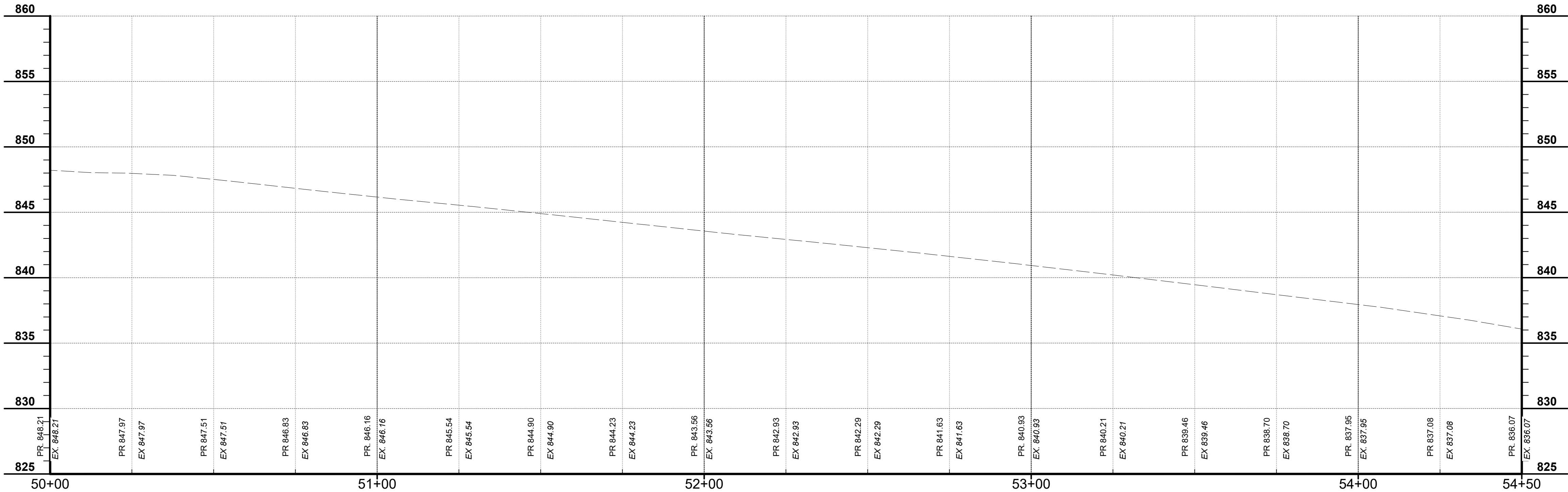
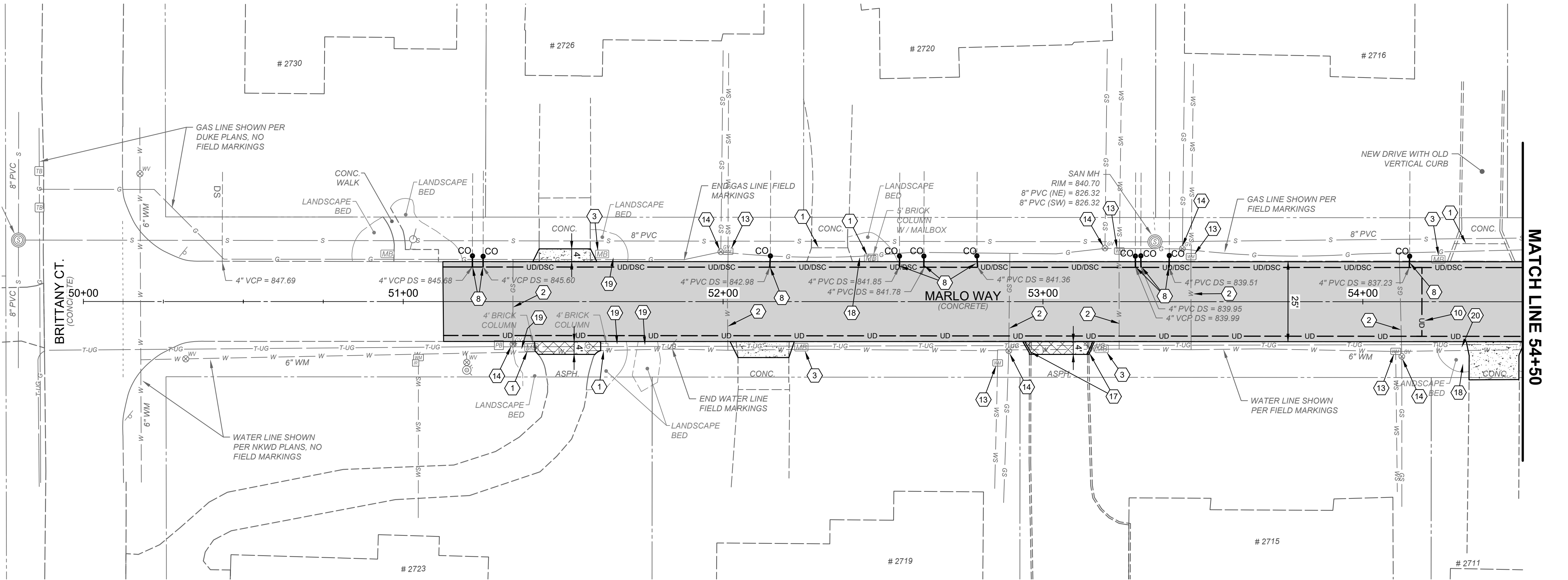
ISSUED FOR:	BID	NO	REVISION	DATE
ISSUE DATE:	02/13/2025			
SCALE:	1" = 20'			
DESIGNED BY:	AWAL			
DRAWN BY:	AWAL			
CHECKED BY:	MHEL			

**MARLO WAY AND SHAKER ROAD
RECONSTRUCTION**

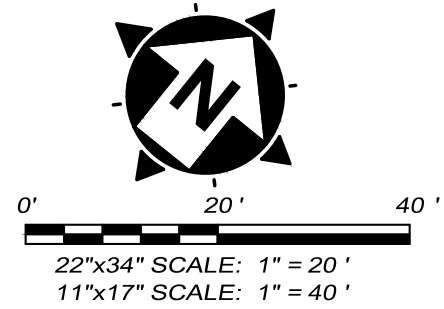
- CITY OF LAKESIDE PARK, KY 41017 -

**SHAKER RD PLAN & PROFILE
14+25 - 18+30**

PROJECT NO. 242350	
DISCIPLINE CIVIL	
SHEET NAME PNP-02	
SHEET 6	OF 8



SCALE:
H: 1" = 20'
V: 1" = 8'



CONSTRUCTION NOTES

- DO NOT DISTURB
- CONTRACTOR TO EXPOSE UTILITY PRIOR TO CONSTRUCTION TO DETERMINE ACTUAL LOCATION. NOTIFY ENGINEER IMMEDIATELY OF ANY CONFLICTS (INCIDENTAL TO CONTRACT).
- REMOVE, SALVAGE & REINSTALL/RELOCATE EXIST. SIGN OR MAILBOX (INCIDENTAL TO ITEM 202 - CLEARING AND GRUBBING).
- REMOVE, SALVAGE AND REINSTALL LANDSCAPE BLOCK (INCIDENTAL TO CLEARING AND GRUBBING).
- REMOVE EXISTING STORM SEWER STRUCTURE.
- INSTALL STANDARD DOUBLE GRATE CURB INLET PER DETAIL. CONNECT TO EXISTING PIPE OR PROPOSED PIPE AS SHOWN ON PLAN.
- CONNECT PROPOSED UNDERDRAIN TO EXISTING UNDERDRAIN (INCIDENTAL TO UNDERDRAIN ITEM).
- CONNECT EXISTING DOWNSPOUT TO COLLECTOR LINE. INSTALL CLEANOUT PER DETAIL.
- CONNECT EXISTING DOWNSPOUT TO EXISTING UNDERDRAIN. INSTALL CLEANOUT PER DETAIL. DO NOT DISTURB PAVEMENT.
- INSTALL TRANSVERSE UNDERDRAIN PER DETAIL (SHEET 2). CONNECT TO PROPOSED EDGE DRAIN.
- CONNECT DOWNSPOUT COLLECTOR LINE TO CURB INLET (INCIDENTAL TO DOWNSPOUT COLLECTOR ITEM).
- CONNECT PROP. UNDERDRAIN TO CURB INLET (INCIDENTAL TO UNDERDRAIN ITEM).
- ADJUST WATER VALVE OR METER TO FINISHED GRADE.
- ADJUST GAS VALVE OR BOX TO FINISHED GRADE.
- ADJUST SANITARY MANHOLE TO GRADE PER SD1 SPECIFICATIONS.
- EDGE DRAIN AND DOWNSPOUT COLLECTOR LINE BEHIND CURB PER DETAIL.
- INSTALL VERTICAL CURB PER DETAIL TO MATCH EXISTING CURB. INCIDENTAL TO DRIVEWAY REPLACEMENT ITEM.
- RESTORE LANDSCAPED AREA WITH RED HARDWOOD MULCH TO MATCH EXISTING. INCIDENTAL TO YARD RESTORATION.
- RESTORE LANDSCAPED AREA WITH BLACK HARDWOOD MULCH TO MATCH EXISTING. INCIDENTAL TO YARD RESTORATION.
- RESTORE LANDSCAPED AREA WITH DECORATIVE ROCK TO MATCH EXISTING. INCIDENTAL TO YARD RESTORATION.

HATCH LEGEND

- 8" PROPOSED PAVEMENT REPLACEMENT WITH GRANULAR BASE - SEE TYPICAL SECTIONS
- 6" CONCRETE DRIVEWAY REPLACEMENT - SEE DETAIL SHEET
- ASPHALT DRIVEWAY REPLACEMENT - SEE DETAIL SHEET

verdantas

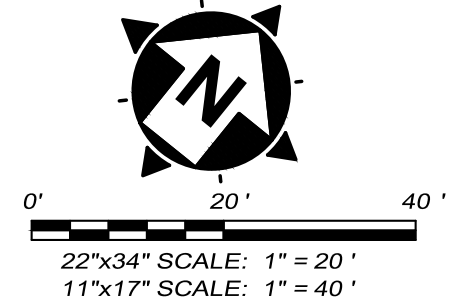
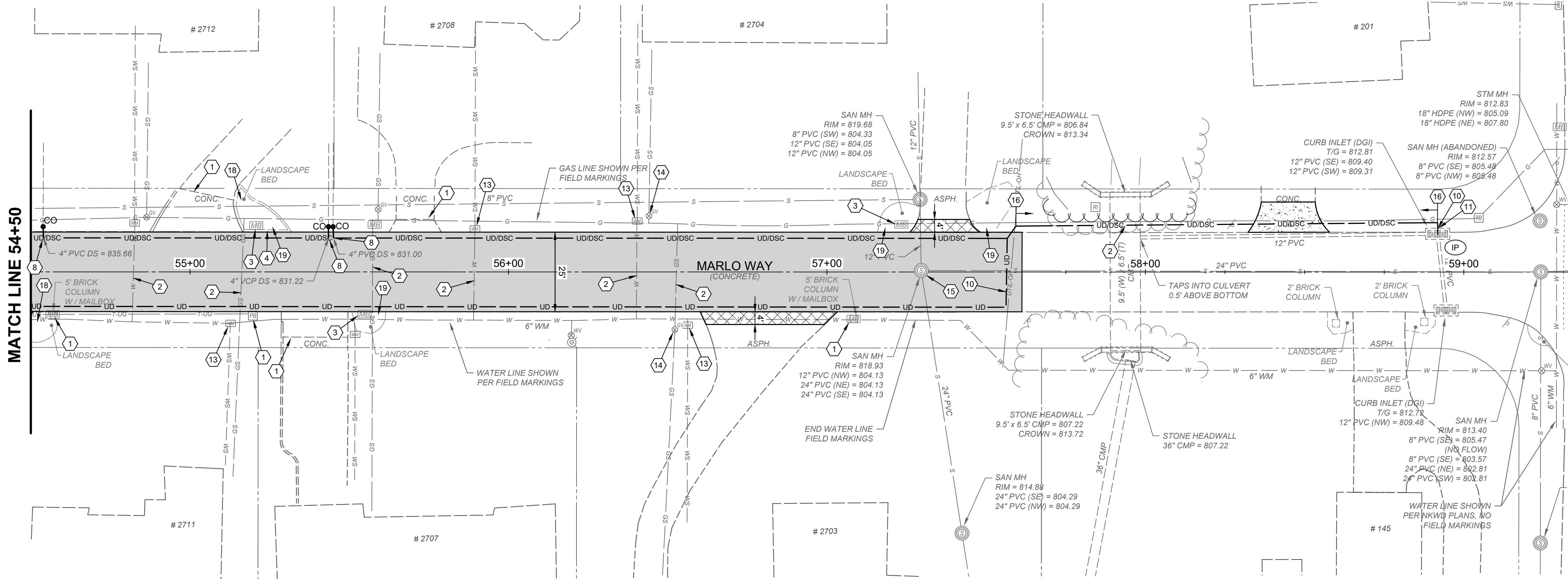
2161 CHAMBER CENTER DRIVE
FORT MITCHELL, KENTUCKY 41017
TEL: (609) 525-0544
WWW.VERDANTAS.COM

ISSUED FOR:	ISSUE DATE:	SCALE:	DESIGNED BY:	DRAWN BY:	CHECKED BY:
	02/13/2025	1" = 20'	AWAL	AWAL	MHEL
NO	REVISION	DATE			

MARLO WAY AND SHAKER ROAD
RECONSTRUCTION
- CITY OF LAKESIDE PARK, KY 41017 -

MARLO WAY PLAN & PROFILE
50+00 - 54+50

PROJECT NO.	242350
DISCIPLINE	CIVIL
SHEET NAME	PNP-03
SHEET	OF
7	8

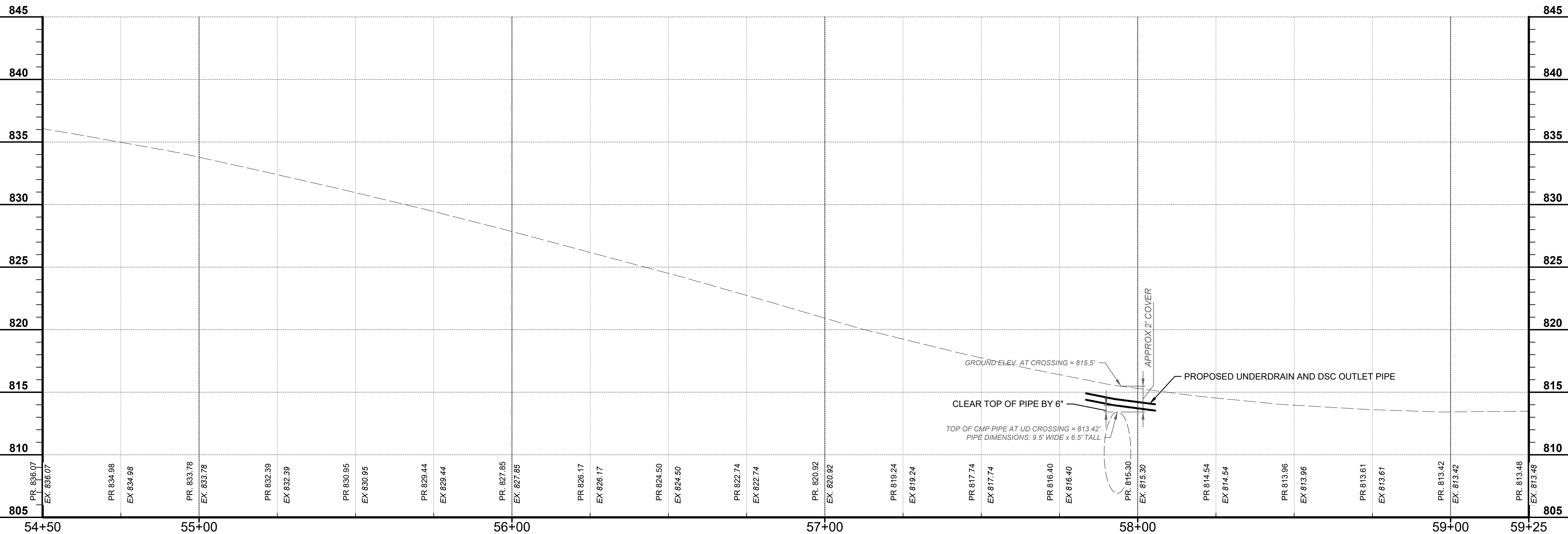


CONSTRUCTION NOTES

- DO NOT DISTURB
- CONTRACTOR TO EXPOSE UTILITY PRIOR TO CONSTRUCTION TO DETERMINE ACTUAL LOCATION. NOTIFY ENGINEER IMMEDIATELY OF ANY CONFLICTS (INCIDENTAL TO CONTRACT).
- REMOVE, SALVAGE & REINSTALL/RELOCATE EXIST. SIGN OR MAILBOX (INCIDENTAL TO ITEM 202 - CLEARING AND GRUBBING).
- REMOVE, SALVAGE AND REINSTALL LANDSCAPE BLOCK (INCIDENTAL TO CLEARING AND GRUBBING).
- REMOVE EXISTING STORM SEWER STRUCTURE.
- INSTALL STANDARD DOUBLE GRATE CURB INLET PER DETAIL. CONNECT TO EXISTING PIPE OR PROPOSED PIPE AS SHOWN ON PLAN.
- CONNECT PROPOSED UNDERDRAIN TO EXISTING UNDERDRAIN (INCIDENTAL TO UNDERDRAIN ITEM).
- CONNECT EXISTING DOWNSPOUT TO COLLECTOR LINE. INSTALL CLEANOUT PER DETAIL.
- CONNECT EXISTING DOWNSPOUT TO EXISTING UNDERDRAIN. INSTALL CLEANOUT PER DETAIL. DO NOT DISTURB PAVEMENT.
- INSTALL TRANSVERSE UNDERDRAIN PER DETAIL (SHEET 2). CONNECT TO PROPOSED EDGE DRAIN.
- CONNECT DOWNSPOUT COLLECTOR LINE TO CURB INLET (INCIDENTAL TO DOWNSPOUT COLLECTOR ITEM).
- CONNECT PROP. UNDERDRAIN TO CURB INLET (INCIDENTAL TO UNDERDRAIN ITEM).
- ADJUST WATER VALVE OR METER TO FINISHED GRADE.
- ADJUST GAS VALVE OR BOX TO FINISHED GRADE.
- ADJUST SANITARY MANHOLE TO GRADE PER SD1 SPECIFICATIONS.
- EDGE DRAIN AND DOWNSPOUT COLLECTOR LINE BEHIND CURB PER DETAIL.
- INSTALL VERTICAL CURB PER DETAIL TO MATCH EXISTING CURB. INCIDENTAL TO DRIVEWAY REPLACEMENT ITEM.
- RESTORE LANDSCAPED AREA WITH RED HARDWOOD MULCH TO MATCH EXISTING. INCIDENTAL TO YARD RESTORATION.
- RESTORE LANDSCAPED AREA WITH BLACK HARDWOOD MULCH TO MATCH EXISTING. INCIDENTAL TO YARD RESTORATION.
- RESTORE LANDSCAPED AREA WITH DECORATIVE ROCK TO MATCH EXISTING. INCIDENTAL TO YARD RESTORATION.

HATCH LEGEND

- 8" PROPOSED PAVEMENT REPLACEMENT WITH GRANULAR BASE - SEE TYPICAL SECTIONS
- 6" CONCRETE DRIVEWAY REPLACEMENT - SEE DETAIL SHEET
- ASPHALT DRIVEWAY REPLACEMENT - SEE DETAIL SHEET



SCALE:
H: 1" = 20'
V: 1" = 5'

verdantas

2161 CHAMBER CENTER DRIVE
FORT MITCHELL, KENTUCKY 41017
TEL: (609) 525-0544
WWW.VERDANTAS.COM

MARLO WAY AND SHAKER ROAD
RECONSTRUCTION
- CITY OF LAKESIDE PARK, KY 41017 -

MARLO WAY PLAN & PROFILE
54+50 - 59+25

PROJECT NO.
242350

DISCIPLINE

CIVIL

SHEET NAME

PNP-04

SHEET

8

OF

8