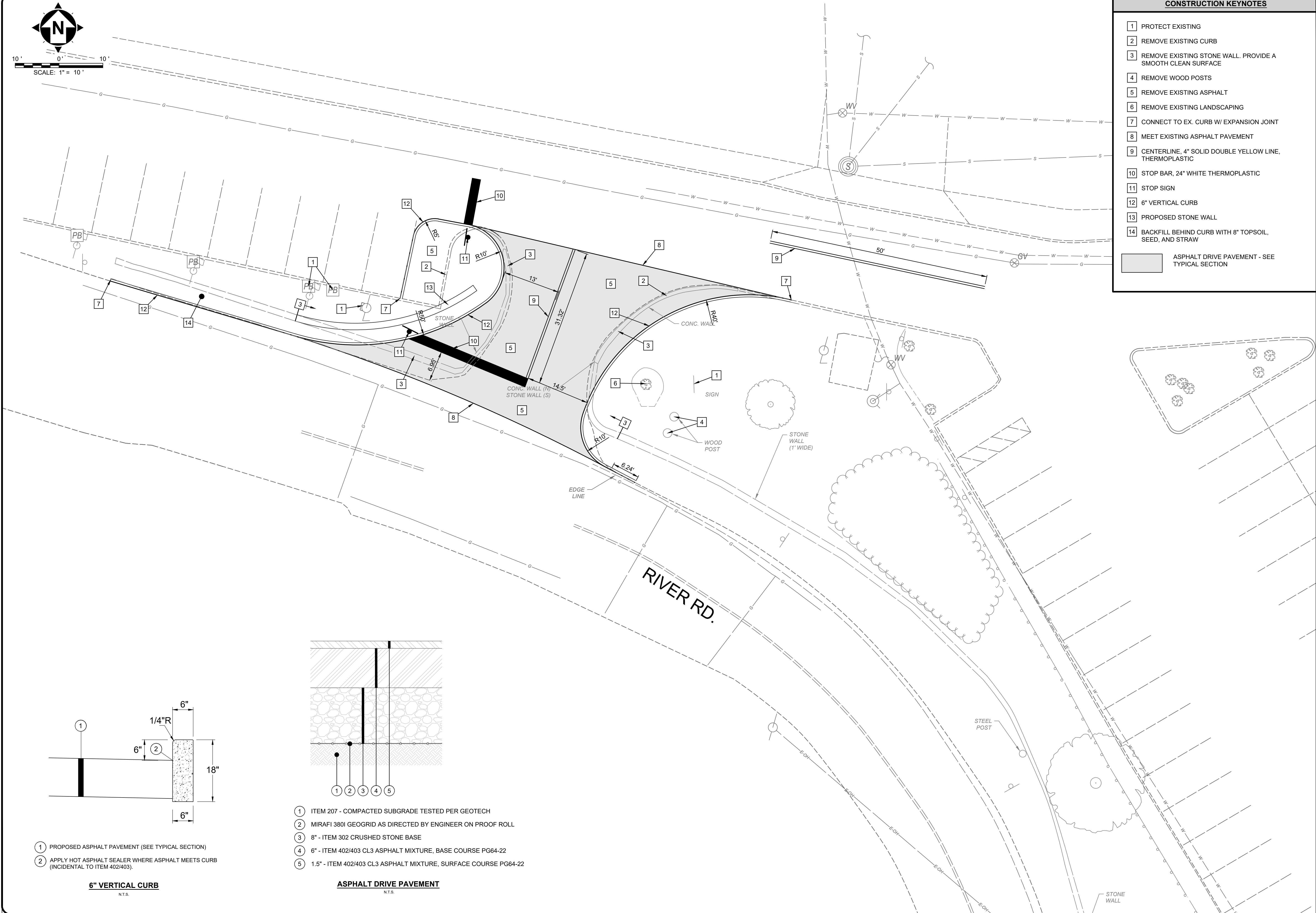
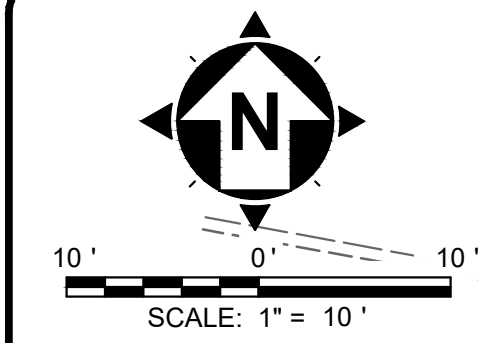


[illegible]



CONSTRUCTION KEYNOTES

- 1 PROTECT EXISTING
- 2 REMOVE EXISTING CURB
- 3 REMOVE EXISTING STONE WALL. PROVIDE A SMOOTH CLEAN SURFACE
- 4 REMOVE WOOD POSTS
- 5 REMOVE EXISTING ASPHALT
- 6 REMOVE EXISTING LANDSCAPING
- 7 CONNECT TO EX. CURB W/ EXPANSION JOINT
- 8 MEET EXISTING ASPHALT PAVEMENT
- 9 CENTERLINE, 4" SOLID DOUBLE YELLOW LINE, THERMOPLASTIC
- 10 STOP BAR, 24" WHITE THERMOPLASTIC
- 11 STOP SIGN
- 12 6" VERTICAL CURB
- 13 PROPOSED STONE WALL
- 14 BACKFILL BEHIND CURB WITH 8" TOPSOIL, SEED, AND STRAW

ASPHALT DRIVE PAVEMENT - SEE TYPICAL SECTION

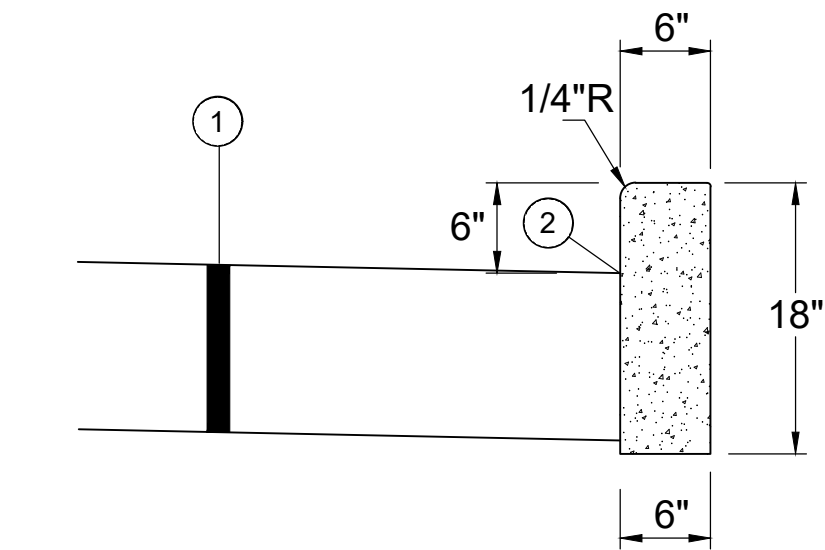
NO	REVISION	DATE

ISSUED FOR:	BID	3/1/2025
ISSUE DATE:	AS SHOWN	
SCALE:	MLAC	
DESIGNED BY:	EKRA	
DRAWN BY:	MLAC	
CHECKED BY:		

CARMEL MANOR ROAD
RE-ALIGNMENT
FORT THOMAS, KY

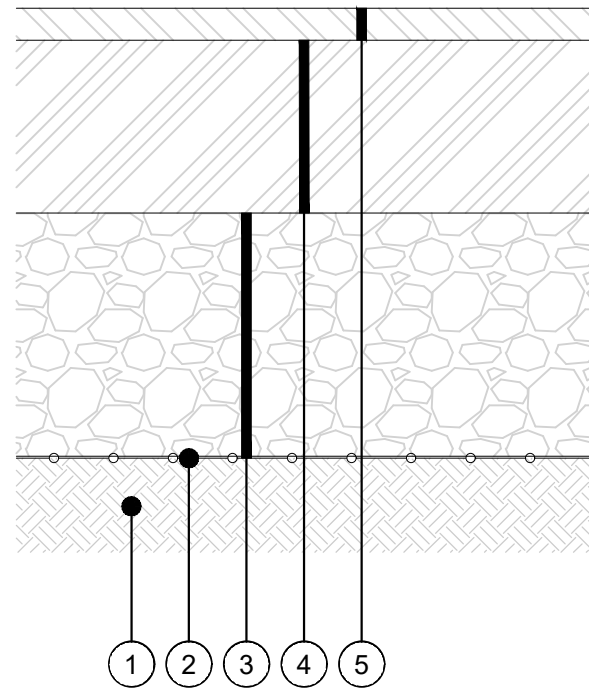
LAYOUT PLAN

PROJECT NO. 242342	
DISCIPLINE CIVIL	
SHEET NAME C01	
SHEET 3	OF 4



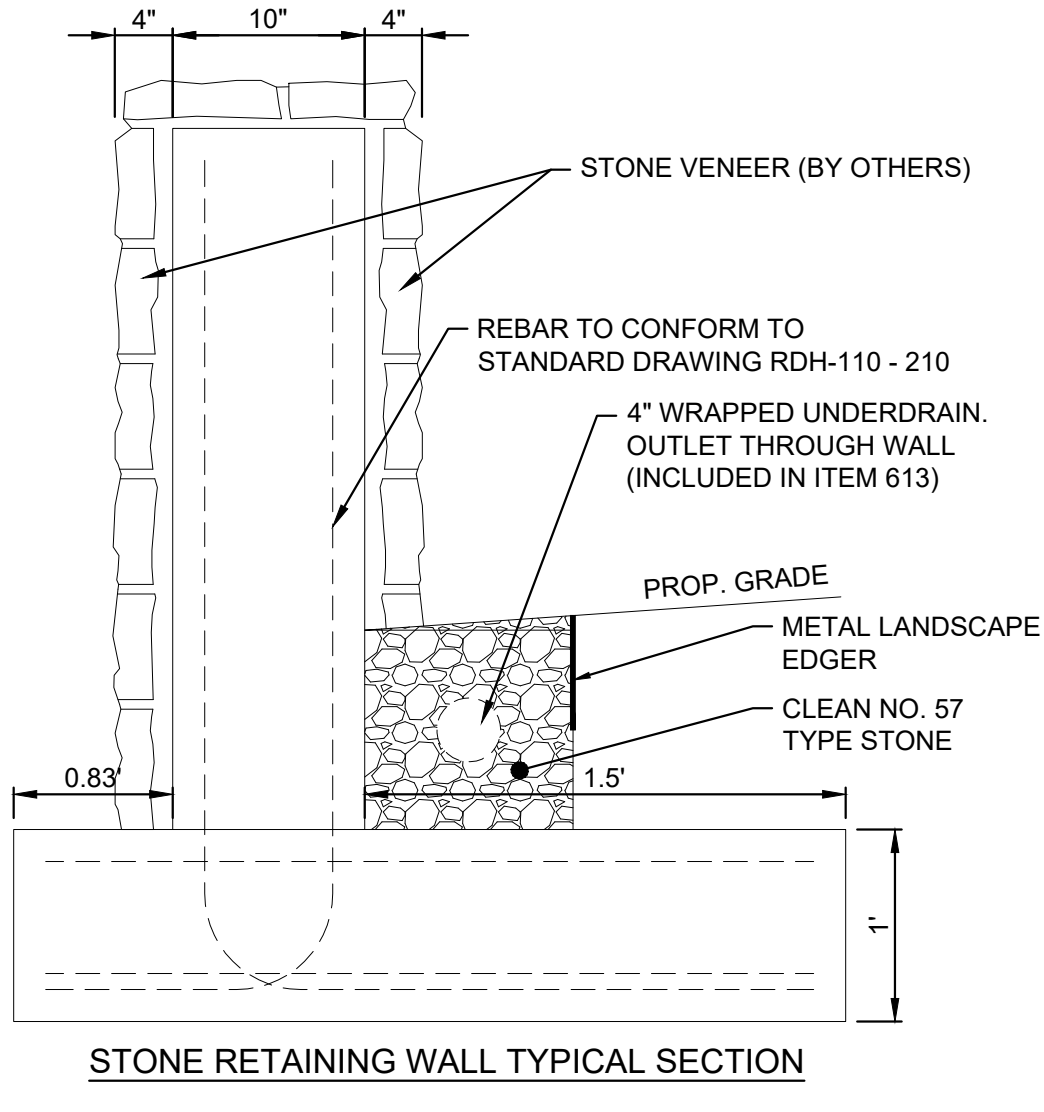
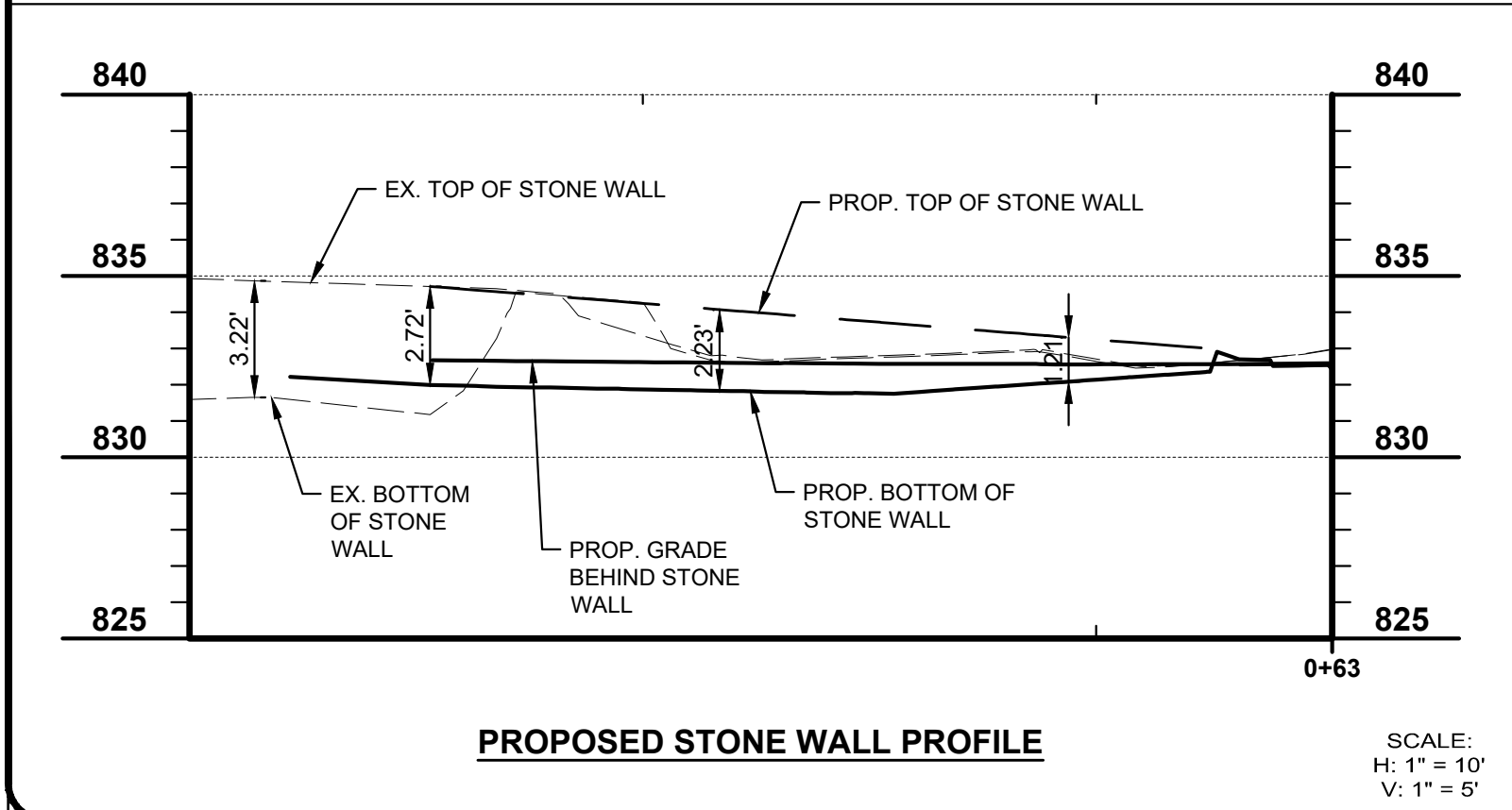
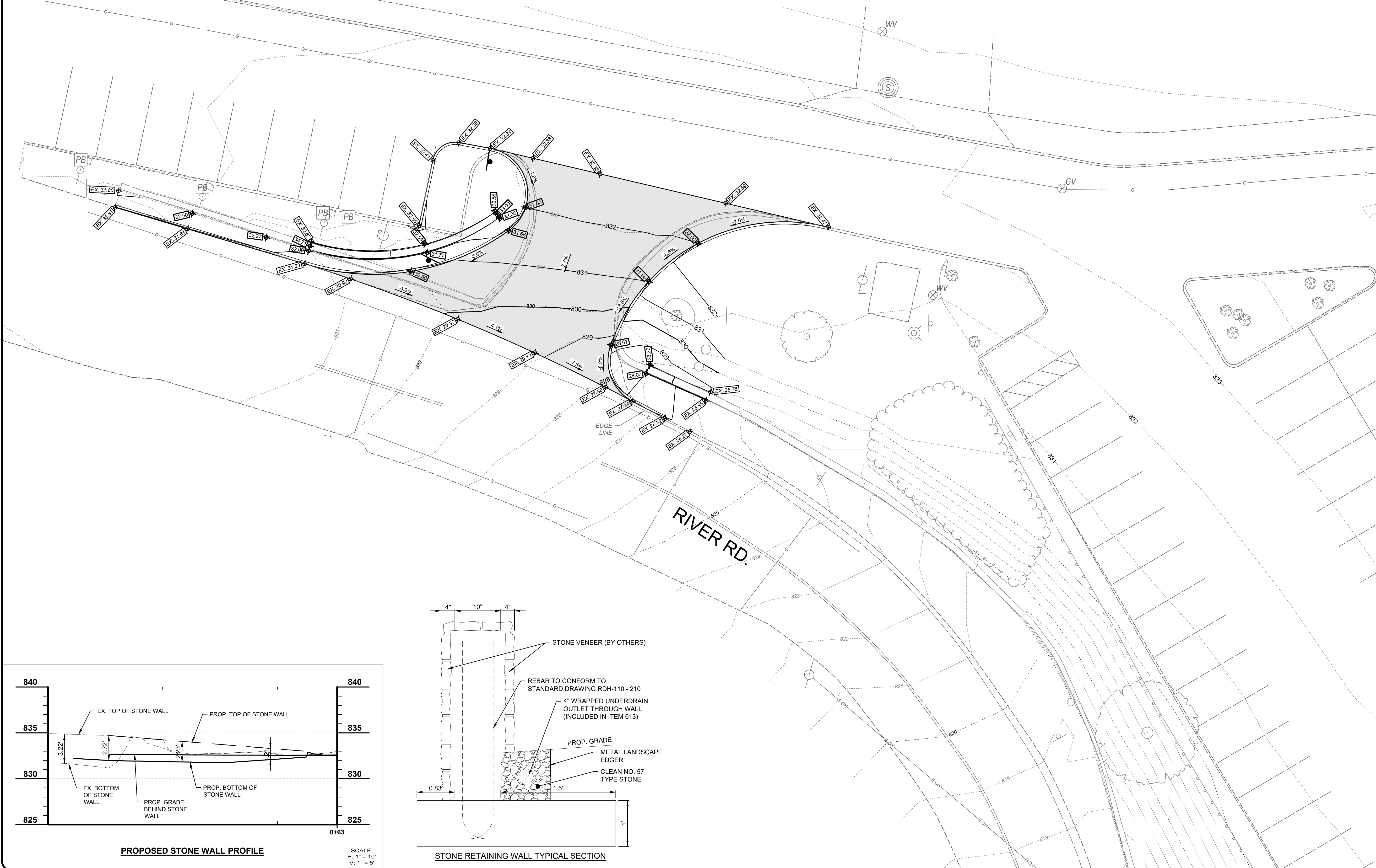
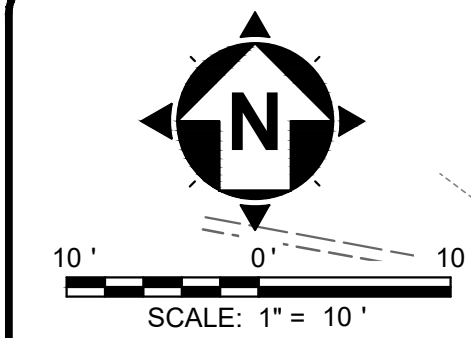
- 1 PROPOSED ASPHALT PAVEMENT (SEE TYPICAL SECTION)
- 2 APPLY HOT ASPHALT SEALER WHERE ASPHALT MEETS CURB (INCIDENTAL TO ITEM 402/403).

6" VERTICAL CURB
N.T.S.



- 1 ITEM 207 - COMPACTED SUBGRADE TESTED PER GEOTECH
- 2 MIRAFI 380I GEOGRID AS DIRECTED BY ENGINEER ON PROOF ROLL
- 3 8" - ITEM 302 CRUSHED STONE BASE
- 4 6" - ITEM 402/403 CL3 ASPHALT MIXTURE, BASE COURSE PG64-22
- 5 1.5" - ITEM 402/403 CL3 ASPHALT MIXTURE, SURFACE COURSE PG64-22

ASPHALT DRIVE PAVEMENT
N.T.S.



ISSUED FOR:	BID	NO	REVISION	DATE
ISSUE DATE:	3/1/2025			
SCALE:	AS SHOWN			
DESIGNED BY:	MLAC			
DRAWN BY:	EKRA			
CHECKED BY:	MLAC			

**CARMEL MANOR ROAD
RE-ALIGNMENT
FORT THOMAS, KY**

GRADING PLAN

PROJECT NO. 242342	
DISCIPLINE CIVIL	
SHEET NAME C02	
SHEET 4	OF 4