

PACP Report with Pipe Run and Incident Snapshots

Surveyed by: ANDREW		Certificate number: T-507-4975		Owner: CITY OF MARION		Customer:		Drainage area:		P/O number:		Sheet number:							
Pipe segment ref.: MH12A_MH12				Start date/time: 20240626 10:30		Street: SILVER ST. & NILES ST				City: MARION, OH									
Location details:				Upstream MH No: MH12A				Rim to invert:		Grade to invert:		Rim to grade:							
Pipe use: CB		Direction: U		Flow control:		Downstream MH No: MH12				Rim to invert:		Grade to invert:		Rim to grade:					
Height: 66 in.		Width:		Shape: C		Material: BR		Lining method:		Pipe joint length:		Total length: 32.800 ft.		Length surveyed: 32.800 ft.		Purpose: B		Sewer category:	
Media label:				Pre-cleaning: N		Date cleaned:		Weather: 1		Location code: C		Pressure value:							
Project name: ROCK SWALE 72 IN INSPECTION				Additional info:															

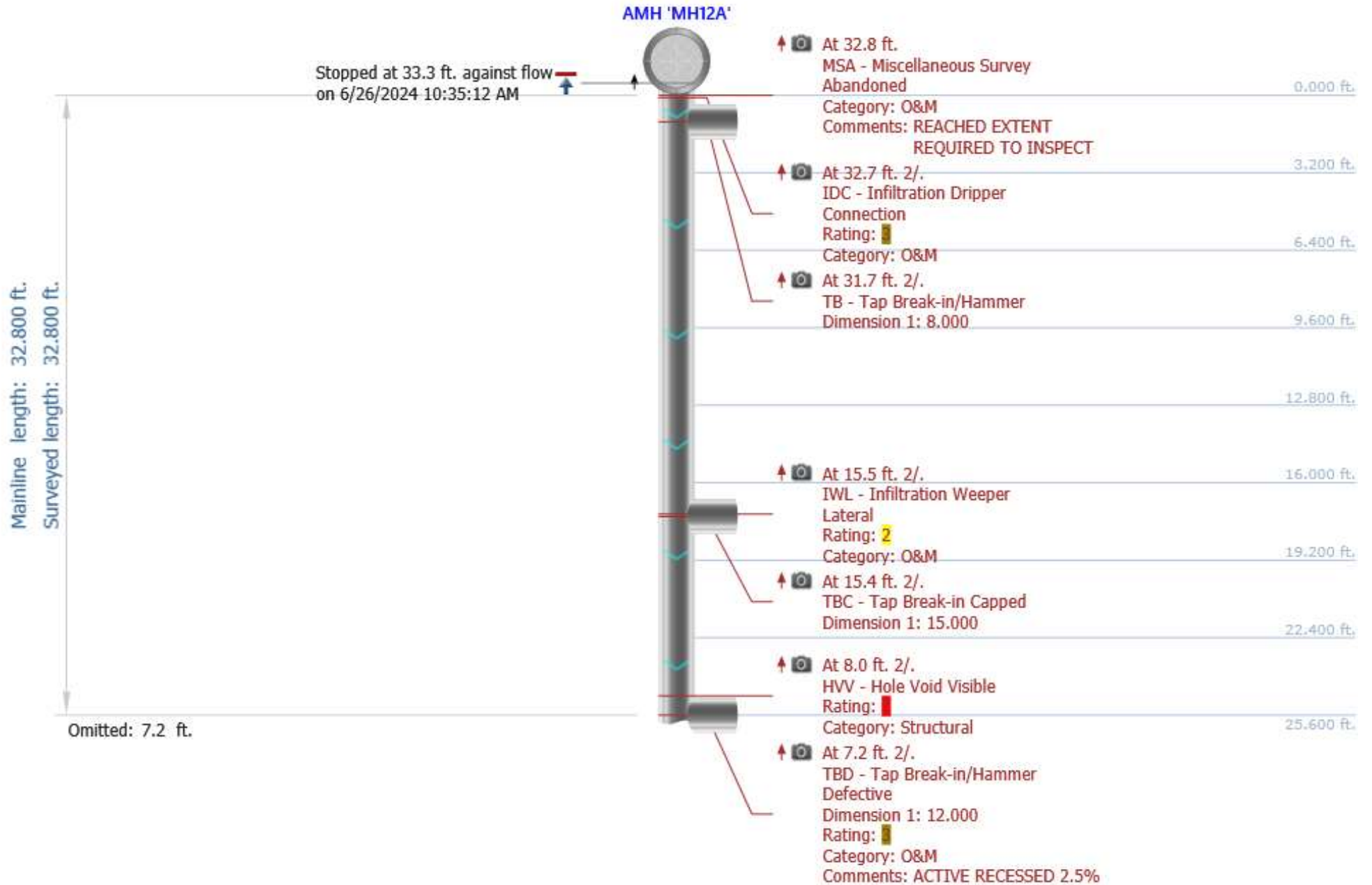
Grade	Structural:					O&M:					Overall:	
	Amount of Defects	Segment Grade	Pipe Rating	Quick Rating	Pipe Rating Index	Amount of Defects	Segment Grade	Pipe Rating	Quick Rating	Pipe Rating Index	Pipe Rating	Pipe Rating Index
1	0	0	5	5100	5.0	0	0	8	3221	2.7	13	3.3
2	0	0				1	2					
3	0	0				2	6					
4	0	0				0	0					
5	1	5				0	0					

Observations

Distance	Video Ref.	PACP Code	Continuous	S/M/L	Value Inches (mm)		%	Joint	Circumferential Location		Rating	Image Ref.	Remarks
					1st	2nd			At/From	To			
0.0 ft.	00:00:01	AMH						<input type="checkbox"/>	/			ROCK SWALE 72 IN INSPECTION-AMH 'MH12A'-AMH 'MH12'-AMH at 0.0 ft.JPG	MH12
0.0 ft.	00:00:23	MWL					15	<input type="checkbox"/>	/			ROCK SWALE 72 IN INSPECTION-AMH 'MH12A'-AMH 'MH12'-MWL at 0.0 ft.JPG	
0.0 ft.	00:00:40	MGO						<input type="checkbox"/>	/			ROCK SWALE 72 IN INSPECTION-AMH 'MH12A'-AMH 'MH12'-MGO at 0.0 ft.JPG	CEMENTITIOUS COATING 2-3
7.2 ft.	00:01:41	TBD			12.000			<input type="checkbox"/>	2 /		3	ROCK SWALE 72 IN INSPECTION-AMH 'MH12A'-AMH 'MH12'-TBD at 7.2 ft.JPG	ACTIVE RECESSED 2.5%
8.0 ft.	00:02:21	HVV						<input type="checkbox"/>	2 /		5	ROCK SWALE 72 IN INSPECTION-AMH 'MH12A'-AMH 'MH12'-HVV at 8.0 ft.JPG	
15.4 ft.	00:02:50	TBC			15.000			<input type="checkbox"/>	2 /			ROCK SWALE 72 IN INSPECTION-AMH 'MH12A'-AMH 'MH12'-TBC at 15.4 ft.JPG	
15.5 ft.	00:03:15	IWL						<input type="checkbox"/>	2 /		2	ROCK SWALE 72 IN INSPECTION-AMH 'MH12A'-AMH 'MH12'-IWL at 15.5 ft.JPG	

Observations

Distance	Video Ref.	PACP Code	Continuous	S/M/L	Value Inches (mm)		%	Joint	Circumferential Location		Rating	Image Ref.	Remarks
					1st	2nd			At/From	To			
31.7 ft.	00:03:48	TB			8.000			<input type="checkbox"/>	2 /			ROCK SWALE 72 IN INSPECTION-AMH 'MH12A'-AMH 'MH12'-TB at 31.7 ft.JPG	
32.7 ft.	00:04:09	IDC						<input type="checkbox"/>	2 /	3		ROCK SWALE 72 IN INSPECTION-AMH 'MH12A'-AMH 'MH12'-IDC at 32.7 ft.JPG	
32.8 ft.	00:04:18	MSA						<input type="checkbox"/>	/			ROCK SWALE 72 IN INSPECTION-AMH 'MH12A'-AMH 'MH12'-MSA at 32.8 ft.JPG	REACHED EXTENT REQUIRED TO INSPECT

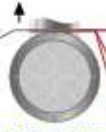


Mainline length: 32.800 ft.
Surveyed length: 32.800 ft.

Omitted: 32.8 ft.

Started at 0.0 ft. against flow
on 6/26/2024 10:30:32 AM

AMH 'MH12'



- At 0.0 ft.
MGO - Miscellaneous General
Observation
Comments: CEMENTITIOUS COATING
2-3
- At 0.0 ft.
MWL - Miscellaneous Water
Level
- At 0.0 ft.
AMH - Manhole
Comments: MH12

32.800 ft.
32.800 ft.

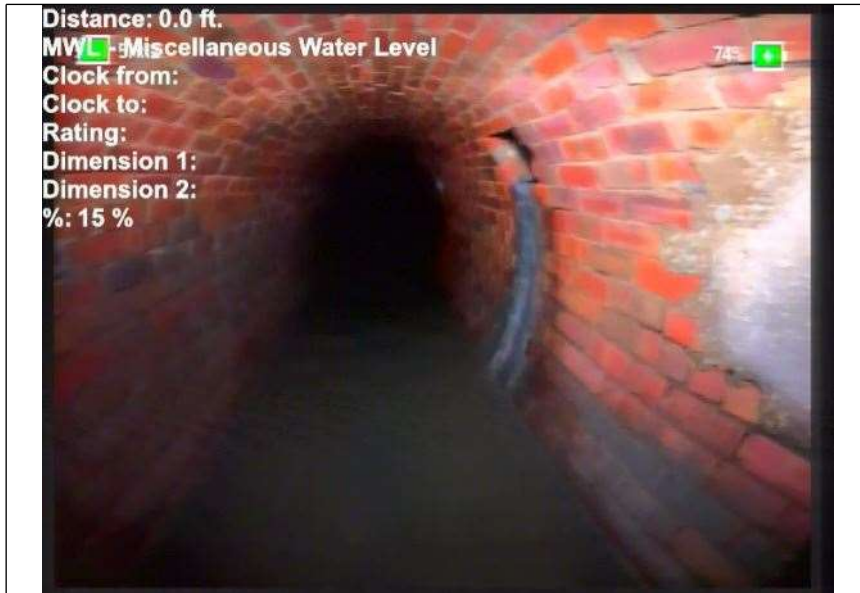
Photos



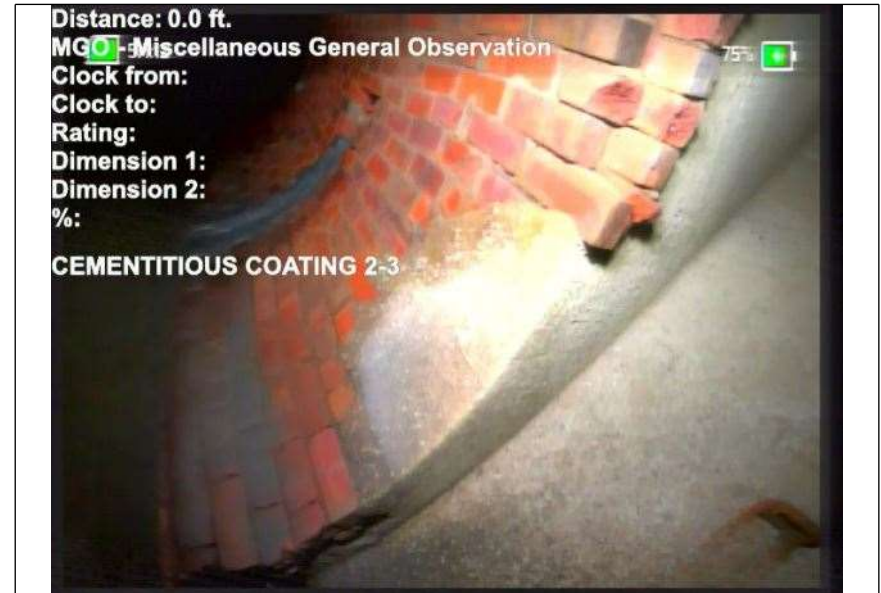
At: 0 ft. AMH - Manhole
Joint: No MH12



At: 0 ft. AMH - Manhole
Joint: No MH12



At: 0 ft. MWL - Miscellaneous Water Level
Joint: No 15 %



At: 0 ft. MGO - Miscellaneous General Observation
Joint: No CEMENTITIOUS COATING 2-3

Photos



At: 7. TBD - Tap Break-in/Hammer Defective
1999998092
6514 ft. 2/.
Joint: No ACTIVE RECESSED 2.5%



At: 8 ft. 2/. HVV - Hole Void Visible
Joint: No

Photos



At: 15. TBC - Tap Break-in Capped
3999996185
303 ft. 2/.
Joint: No



At: 15.5 ft. 2/. IWL - Infiltration Weeper Lateral
Joint: No

Photos



At: 31. TB - Tap Break-in/Hammer
7000007629
395 ft. 2/.

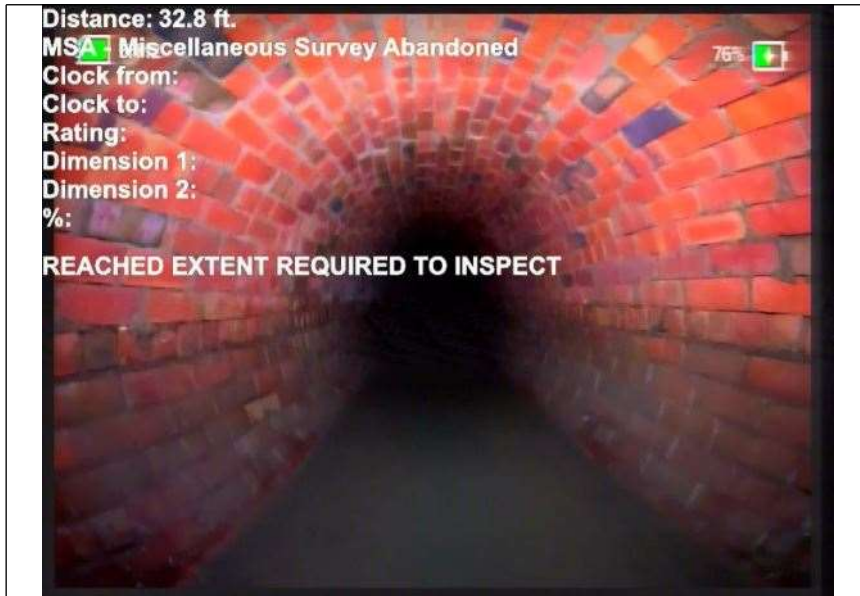
Joint: No



At: 32. IDC - Infiltration Dripper Connection
7000007629
395 ft. 2/.

Joint: No

Photos



At: 32. MSA - Miscellaneous Survey Abandoned
7999992370
605 ft.

Joint: No REACHED EXTENT REQUIRED TO INSPECT