

PACP Report with Pipe Run and Incident Snapshots

Surveyed by: ANDREW		Certificate number: T-507-4975		Owner: CITY OF MARION		Customer:		Drainage area:		P/O number:		Sheet number:							
Pipe segment ref.: MH10_MH9				Start date/time: 20240626 08:39		Street: 876 SILVER ST.				City: MARION, OH									
Location details:				Upstream MH No: MH10				Rim to invert:		Grade to invert:		Rim to grade:							
Pipe use: CB		Direction: U		Flow control:		Downstream MH No: MH9				Rim to invert:		Grade to invert:		Rim to grade:					
Height: 66 in.		Width:		Shape: C		Material: BR		Lining method:		Pipe joint length:		Total length: 785.200 ft.		Length surveyed: 785.200 ft.		Purpose: B		Sewer category:	
Media label:				Pre-cleaning: N		Date cleaned:		Weather: 1		Location code: C		Pressure value:							
Project name: ROCK SWALE 72 IN INSPECTION				Additional info:															

Grade	Structural:					O&M:					Overall:	
	Amount of Defects	Segment Grade	Pipe Rating	Quick Rating	Pipe Rating Index	Amount of Defects	Segment Grade	Pipe Rating	Quick Rating	Pipe Rating Index	Pipe Rating	Pipe Rating Index
1	0	0	278	5142	2.1	4	4	93	3D21	2.7	371	2.2
2	119	238				1	2					
3	9	27				29	87					
4	2	8				0	0					
5	1	5				0	0					

Observations

Distance	Video Ref.	PACP Code	Continuous	S/M/L	Value Inches (mm)		%	Joint	Circumferential Location		Rating	Image Ref.	Remarks
					1st	2nd			At/From	To			
0.0 ft.	00:00:14	AMH						<input type="checkbox"/>	/			ROCK SWALE 72 IN INSPECTION-AMH 'MH10'-AMH 'MH9'-AMH at 0.0 ft.JPG	MH9
0.0 ft.	00:01:16	MWL					10	<input type="checkbox"/>	/			ROCK SWALE 72 IN INSPECTION-AMH 'MH10'-AMH 'MH9'-MWL at 0.0 ft.JPG	
3.0 ft.	00:03:01	SSS						<input type="checkbox"/>	3 /	2		ROCK SWALE 72 IN INSPECTION-AMH 'MH10'-AMH 'MH9'-SSS at 3.0 ft.JPG	BRICKS DELAMINATED AND CHIPPING
6.0 ft.	00:04:50	MGO						<input type="checkbox"/>	/			ROCK SWALE 72 IN INSPECTION-AMH 'MH10'-AMH 'MH9'-MGO at 6.0 ft.JPG	LIGHT SCALE LESS THAN 5% 5-10 OCLOCK CONTINUOUS
15.0 ft.	00:06:49	TBA				8.000		<input type="checkbox"/>	2 /			ROCK SWALE 72 IN INSPECTION-AMH 'MH10'-AMH 'MH9'-TBA at 15.0 ft.JPG	
15.0 ft.	00:07:21	TBA				4.000		<input type="checkbox"/>	11 /			ROCK SWALE 72 IN INSPECTION-AMH 'MH10'-AMH 'MH9'-TBA at 15.0 ft_1.JPG	
27.9 ft.	00:10:09	TBA				8.000		<input type="checkbox"/>	11 /			ROCK SWALE 72 IN INSPECTION-AMH 'MH10'-AMH 'MH9'-TBA at 27.9 ft.JPG	

Observations

Distance	Video Ref.	PACP Code	Continuous	S/M/L	Value Inches (mm)		%	Joint	Circumferential Location		Rating	Image Ref.	Remarks
					1st	2nd			At/From	To			
49.8 ft.	00:11:05	TBD			4.000			<input type="checkbox"/>	2 /		3	ROCK SWALE 72 IN INSPECTION-AMH 'MH10'-AMH 'MH9'-TBD at 49.8 ft.JPG	BLOCKED 1 COURSE OF BRICK / INFILTRATION DRIPPER
70.7 ft.	00:12:34	MMS	S01	S				<input type="checkbox"/>	6 /		2	ROCK SWALE 72 IN INSPECTION-AMH 'MH10'-AMH 'MH9'-MMS at 70.7 ft.JPG	
81.9 ft.	00:13:37	MB						<input type="checkbox"/>	11 /		4	ROCK SWALE 72 IN INSPECTION-AMH 'MH10'-AMH 'MH9'-MB at 81.9 ft.JPG	1 COURSE MISSING AROUND TAP
81.9 ft.	00:13:08	TB			4.000			<input type="checkbox"/>	11 /			ROCK SWALE 72 IN INSPECTION-AMH 'MH10'-AMH 'MH9'-TB at 81.9 ft.JPG	
85.2 ft.	00:14:48	TBD			6.000			<input type="checkbox"/>	6 /		3	ROCK SWALE 72 IN INSPECTION-AMH 'MH10'-AMH 'MH9'-TBD at 85.2 ft.JPG	TAP IN INVERT 100% BLOCKED WITH DEBRIS
97.2 ft.	00:15:51	TBD			4.000			<input type="checkbox"/>	2 /		3	ROCK SWALE 72 IN INSPECTION-AMH 'MH10'-AMH 'MH9'-TBD at 97.2 ft.JPG	9-3 OCLOCK OF TAP BLOCKED BY BRICK
129.9 ft.	00:17:51	IDC						<input type="checkbox"/>	11 /		3	ROCK SWALE 72 IN INSPECTION-AMH 'MH10'-AMH 'MH9'-IDC at 129.9 ft.JPG	
129.9 ft.	00:17:10	TB			4.000			<input type="checkbox"/>	11 /			ROCK SWALE 72 IN INSPECTION-AMH 'MH10'-AMH 'MH9'-TB at 129.9 ft.JPG	

Observations

Distance	Video Ref.	PACP Code	Continuous	S/M/L	Value Inches (mm)		%	Joint	Circumferential Location		Rating	Image Ref.	Remarks
					1st	2nd			At/From	To			
129.9 ft.	00:18:22	MSC			66.000			<input type="checkbox"/>	/			ROCK SWALE 72 IN INSPECTION-AMH 'MH10'-AMH 'MH9'-MSC at 129.9 ft.JPG	
147.8 ft.	00:19:24	IS						<input type="checkbox"/>	2 /		1	ROCK SWALE 72 IN INSPECTION-AMH 'MH10'-AMH 'MH9'-IS at 147.8 ft.JPG	
189.3 ft.	00:21:31	TB			6.000			<input type="checkbox"/>	2 /			ROCK SWALE 72 IN INSPECTION-AMH 'MH10'-AMH 'MH9'-TB at 189.3 ft.JPG	
192.5 ft.	00:22:06	IDB						<input type="checkbox"/>	8 /		3	ROCK SWALE 72 IN INSPECTION-AMH 'MH10'-AMH 'MH9'-IDB at 192.5 ft.JPG	
195.3 ft.	00:23:15	MMS	F01	S				<input type="checkbox"/>	6 /		2	ROCK SWALE 72 IN INSPECTION-AMH 'MH10'-AMH 'MH9'-MMS at 195.3 ft_1.JPG	
195.3 ft.	00:22:46	MMS	S02	S				<input type="checkbox"/>	5 / 7		2	ROCK SWALE 72 IN INSPECTION-AMH 'MH10'-AMH 'MH9'-MMS at 195.3 ft.JPG	1/2"-1" DEPTH
205.6 ft.	00:23:56	TB			12.000			<input type="checkbox"/>	11 /			ROCK SWALE 72 IN INSPECTION-AMH 'MH10'-AMH 'MH9'-TB at 205.6 ft.JPG	
210.8 ft.	00:24:49	TBD			15.000			<input type="checkbox"/>	9 /		3	ROCK SWALE 72 IN INSPECTION-AMH 'MH10'-AMH 'MH9'-TBD at 210.8 ft.JPG	ACTIVE 8" RECESSED, LOCATED ON SURFACE GREEN PAINT APPROX. 13'

Observations

Distance	Video Ref.	PACP Code	Continuous	S/M/L	Value Inches (mm)		%	Joint	Circumferential Location		Rating	Image Ref.	Remarks
					1st	2nd			At/From	To			
218.4 ft.	00:26:56	TBA			15.000			<input type="checkbox"/>	10 /			ROCK SWALE 72 IN INSPECTION-AMH 'MH10'-AMH 'MH9'-TBA at 218.4 ft.JPG	LOCATED ON SURFACE DEPTH APPROX. 11.5'
218.4 ft.	00:27:46	MGO						<input type="checkbox"/>	/			ROCK SWALE 72 IN INSPECTION-AMH 'MH10'-AMH 'MH9'-MGO at 218.4 ft.JPG	UNKNOWN WHITE SUBSTANCE
236.3 ft.	00:28:57	TB			12.000			<input type="checkbox"/>	11 /			ROCK SWALE 72 IN INSPECTION-AMH 'MH10'-AMH 'MH9'-TB at 236.3 ft.JPG	
254.7 ft.	00:30:18	TBD			12.000			<input type="checkbox"/>	9 /	3		ROCK SWALE 72 IN INSPECTION-AMH 'MH10'-AMH 'MH9'-TBD at 254.7 ft_1.JPG	RECESSED 5" MISSING 1 COURSE OF BRICK
254.7 ft.	00:31:34	IDC						<input type="checkbox"/>	9 /	3		ROCK SWALE 72 IN INSPECTION-AMH 'MH10'-AMH 'MH9'-IDC at 254.7 ft_1.JPG	
254.7 ft.	00:29:43	TBD			4.000			<input type="checkbox"/>	2 /	3		ROCK SWALE 72 IN INSPECTION-AMH 'MH10'-AMH 'MH9'-TBD at 254.7 ft.JPG	RECESSED 4"
278.5 ft.	00:32:22	TBD			4.000			<input type="checkbox"/>	11 /	3		ROCK SWALE 72 IN INSPECTION-AMH 'MH10'-AMH 'MH9'-TBD at 278.5 ft.JPG	RECESSED 4"

Observations

Distance	Video Ref.	PACP Code	Continuous	S/M/L	Value Inches (mm)		%	Joint	Circumferential Location		Rating	Image Ref.	Remarks
					1st	2nd			At/From	To			
278.6 ft.	00:32:51	TBD			4.000			<input type="checkbox"/>	2 /		3	ROCK SWALE 72 IN INSPECTION-AMH 'MH10'-AMH 'MH9'-TBD at 278.6 ft.JPG	BLOCKED 11-1 ON TAP
281.4 ft.	00:33:25	IDB						<input type="checkbox"/>	11 /		3	ROCK SWALE 72 IN INSPECTION-AMH 'MH10'-AMH 'MH9'-IDB at 281.4 ft.JPG	
281.4 ft.	00:33:57	TB			4.000			<input type="checkbox"/>	11 /			ROCK SWALE 72 IN INSPECTION-AMH 'MH10'-AMH 'MH9'-TB at 281.4 ft.JPG	2 - 4" TAPS ALIGNMENT DOWN
317.1 ft.	00:36:43	TBD			2.000			<input type="checkbox"/>	2 /		3	ROCK SWALE 72 IN INSPECTION-AMH 'MH10'-AMH 'MH9'-TBD at 317.1 ft.JPG	BLOCKED BY BRICKS CAN NOT DETERMINE TAP SIZE
335.6 ft.	00:38:03	TBD			4.000			<input type="checkbox"/>	11 /		3	ROCK SWALE 72 IN INSPECTION-AMH 'MH10'-AMH 'MH9'-TBD at 335.6 ft.JPG	RECESSED 5"
339.6 ft.	00:38:44	TB			8.000			<input type="checkbox"/>	2 /			ROCK SWALE 72 IN INSPECTION-AMH 'MH10'-AMH 'MH9'-TB at 339.6 ft.JPG	
367.5 ft.	00:39:44	MGO						<input type="checkbox"/>	/			ROCK SWALE 72 IN INSPECTION-AMH 'MH10'-AMH 'MH9'-MGO at 367.5 ft.JPG	EVIDENCE OF INFILTRATION DRIPPER NOW SCALED OVER

Observations

Distance	Video Ref.	PACP Code	Continuous	S/M/L	Value Inches (mm)		%	Joint	Circumferential Location		Rating	Image Ref.	Remarks
					1st	2nd			At/From	To			
379.3 ft.	00:40:48	TBD			4.000			<input type="checkbox"/>	2 /		3	ROCK SWALE 72 IN INSPECTION-AMH 'MH10'-AMH 'MH9'-TBD at 379.3 ft.JPG	RECESSED 5" LIGHT SCALE AROUND CONNECTION
389.3 ft.	00:41:34	DAR					5	<input type="checkbox"/>	3 / 5		2	ROCK SWALE 72 IN INSPECTION-AMH 'MH10'-AMH 'MH9'-DAR at 389.3 ft.JPG	<5% EVIDENCE OF SANITARY ACTIVITY
396.5 ft.	00:42:34	TB			4.000			<input type="checkbox"/>	11 /			ROCK SWALE 72 IN INSPECTION-AMH 'MH10'-AMH 'MH9'-TB at 396.5 ft.JPG	
402.1 ft.	00:43:36	IDC						<input type="checkbox"/>	3 /		3	ROCK SWALE 72 IN INSPECTION-AMH 'MH10'-AMH 'MH9'-IDC at 402.1 ft.JPG	
402.1 ft.	00:43:03	TBD			4.000			<input type="checkbox"/>	3 /		3	ROCK SWALE 72 IN INSPECTION-AMH 'MH10'-AMH 'MH9'-TBD at 402.1 ft.JPG	RECESSED 3"
440.9 ft.	00:44:26	TBD			4.000			<input type="checkbox"/>	2 /		3	ROCK SWALE 72 IN INSPECTION-AMH 'MH10'-AMH 'MH9'-TBD at 440.9 ft.JPG	ACTIVE AND RECESSED 2"
455.2 ft.	00:45:09	MB						<input type="checkbox"/>	6 /		4	ROCK SWALE 72 IN INSPECTION-AMH 'MH10'-AMH 'MH9'-MB at 455.2 ft.JPG	3" DEPTH IN INVERT NOT FULL BRICK
461.7 ft.	00:45:44	TB			4.000			<input type="checkbox"/>	11 /			ROCK SWALE 72 IN INSPECTION-AMH 'MH10'-AMH 'MH9'-TB at 461.7 ft.JPG	

Observations

Distance	Video Ref.	PACP Code	Continuous	S/M/L	Value Inches (mm)		%	Joint	Circumferential Location		Rating	Image Ref.	Remarks
					1st	2nd			At/From	To			
478.3 ft.	00:46:15	TBD			4.000			<input type="checkbox"/>	11 /		3	ROCK SWALE 72 IN INSPECTION-AMH 'MH10'-AMH 'MH9'-TBD at 478.3 ft.JPG	RECESSED 4"
487.1 ft.	00:46:58	TBD			4.000			<input type="checkbox"/>	11 /		3	ROCK SWALE 72 IN INSPECTION-AMH 'MH10'-AMH 'MH9'-TBD at 487.1 ft.JPG	RECESSED 2"
487.1 ft.	00:47:22	IDL						<input type="checkbox"/>	11 /		3	ROCK SWALE 72 IN INSPECTION-AMH 'MH10'-AMH 'MH9'-IDL at 487.1 ft.JPG	
517.8 ft.	00:48:23	MML	S03	L				<input type="checkbox"/>	6 /		3	ROCK SWALE 72 IN INSPECTION-AMH 'MH10'-AMH 'MH9'-MML at 517.8 ft.JPG	
517.8 ft.	00:48:43	MGO						<input type="checkbox"/>	/			ROCK SWALE 72 IN INSPECTION-AMH 'MH10'-AMH 'MH9'-MGO at 517.8 ft.JPG	WATER LEVEL 5%
517.8 ft.	00:48:01	MMS	F02	S				<input type="checkbox"/>	5 / 7		2	ROCK SWALE 72 IN INSPECTION-AMH 'MH10'-AMH 'MH9'-MMS at 517.8 ft.JPG	
534.4 ft.	00:49:29	TBD			4.000			<input type="checkbox"/>	11 /		3	ROCK SWALE 72 IN INSPECTION-AMH 'MH10'-AMH 'MH9'-TBD at 534.4 ft.JPG	RECESSED 3"

Observations

Distance	Video Ref.	PACP Code	Continuous	S/M/L	Value Inches (mm)		%	Joint	Circumferential Location		Rating	Image Ref.	Remarks
					1st	2nd			At/From	To			
548.9 ft.	00:50:58	TBD			4.000			<input type="checkbox"/>	2 /		3	ROCK SWALE 72 IN INSPECTION-AMH 'MH10'-AMH 'MH9'-TBD at 548.9 ft.JPG	RECESSED 4"
548.9 ft.	00:51:22	ISC						<input type="checkbox"/>	2 / 5		1	ROCK SWALE 72 IN INSPECTION-AMH 'MH10'-AMH 'MH9'-ISC at 548.9 ft.JPG	
552.8 ft.	00:51:39	MML	F03	L				<input type="checkbox"/>	6 /		3	ROCK SWALE 72 IN INSPECTION-AMH 'MH10'-AMH 'MH9'-MML at 552.8 ft.JPG	
570.0 ft.	00:52:07	TBC			6.000			<input type="checkbox"/>	10 /			ROCK SWALE 72 IN INSPECTION-AMH 'MH10'-AMH 'MH9'-TBC at 570.0 ft.JPG	
589.2 ft.	00:52:46	DB						<input type="checkbox"/>	6 /		3	ROCK SWALE 72 IN INSPECTION-AMH 'MH10'-AMH 'MH9'-DB at 589.2 ft.JPG	2"
625.4 ft.	00:53:42	DB						<input type="checkbox"/>	7 /		3	ROCK SWALE 72 IN INSPECTION-AMH 'MH10'-AMH 'MH9'-DB at 625.4 ft.JPG	1"
637.9 ft.	00:54:06	TB			15.000			<input type="checkbox"/>	11 /			ROCK SWALE 72 IN INSPECTION-AMH 'MH10'-AMH 'MH9'-TB at 637.9 ft.JPG	
648.0 ft.	00:54:52	TB			4.000			<input type="checkbox"/>	2 /			ROCK SWALE 72 IN INSPECTION-AMH 'MH10'-AMH 'MH9'-TB at 648.0 ft.JPG	

Observations

Distance	Video Ref.	PACP Code	Continuous	S/M/L	Value Inches (mm)		%	Joint	Circumferential Location		Rating	Image Ref.	Remarks
					1st	2nd			At/From	To			
648.1 ft.	00:55:13	MMS		S				<input type="checkbox"/>	2 / 5		2	ROCK SWALE 72 IN INSPECTION-AMH 'MH10'-AMH 'MH9'-MMS at 648.1 ft.JPG	
648.3 ft.	00:55:59	MMS	S04	S				<input type="checkbox"/>	2 / 9		2	ROCK SWALE 72 IN INSPECTION-AMH 'MH10'-AMH 'MH9'-MMS at 648.3 ft.JPG	
654.9 ft.	00:56:26	TBD			15.000			<input type="checkbox"/>	10 /		3	ROCK SWALE 72 IN INSPECTION-AMH 'MH10'-AMH 'MH9'-TBD at 654.9 ft.JPG	FRACTURE 6 OCLOCK ACTIVE
671.4 ft.	00:57:52	TB			15.000			<input type="checkbox"/>	10 /			ROCK SWALE 72 IN INSPECTION-AMH 'MH10'-AMH 'MH9'-TB at 671.4 ft.JPG	
671.4 ft.	00:58:27	MGO						<input type="checkbox"/>	/			ROCK SWALE 72 IN INSPECTION-AMH 'MH10'-AMH 'MH9'-MGO at 671.4 ft.JPG	7-11 <5% SCALE
688.1 ft.	00:59:11	TB			8.000			<input type="checkbox"/>	11 /			ROCK SWALE 72 IN INSPECTION-AMH 'MH10'-AMH 'MH9'-TB at 688.1 ft.JPG	
688.4 ft.	00:59:44	IDC						<input type="checkbox"/>	11 /		3	ROCK SWALE 72 IN INSPECTION-AMH 'MH10'-AMH 'MH9'-IDC at 688.4 ft.JPG	

Observations

Distance	Video Ref.	PACP Code	Continuous	S/M/L	Value Inches (mm)		%	Joint	Circumferential Location		Rating	Image Ref.	Remarks
					1st	2nd			At/From	To			
696.5 ft.	01:00:10	TBD			4.000			<input type="checkbox"/>	2 /		3	ROCK SWALE 72 IN INSPECTION-AMH 'MH10'-AMH 'MH9'-TBD at 696.5 ft.JPG	RECESSED 6" BLOCKED 50% BY BRICK
709.7 ft.	01:01:19	TBD			8.000			<input type="checkbox"/>	2 /		3	ROCK SWALE 72 IN INSPECTION-AMH 'MH10'-AMH 'MH9'-TBD at 709.7 ft.JPG	RECESSED 6"
709.7 ft.	01:01:43	ISB						<input type="checkbox"/>	2 / 5		1	ROCK SWALE 72 IN INSPECTION-AMH 'MH10'-AMH 'MH9'-ISB at 709.7 ft.JPG	
719.5 ft.	01:02:11	TB			4.000			<input type="checkbox"/>	2 /			ROCK SWALE 72 IN INSPECTION-AMH 'MH10'-AMH 'MH9'-TB at 719.5 ft.JPG	
719.6 ft.	01:02:29	ISB						<input type="checkbox"/>	2 / 5		1	ROCK SWALE 72 IN INSPECTION-AMH 'MH10'-AMH 'MH9'-ISB at 719.6 ft.JPG	
757.3 ft.	01:03:18	TBD			4.000			<input type="checkbox"/>	2 /		3	ROCK SWALE 72 IN INSPECTION-AMH 'MH10'-AMH 'MH9'-TBD at 757.3 ft.JPG	RECESSED 4"
757.7 ft.	01:04:14	HVV						<input type="checkbox"/>	2 /		5	ROCK SWALE 72 IN INSPECTION-AMH 'MH10'-AMH 'MH9'-HVV at 757.7 ft.JPG	BELOW TAP

Observations

Distance	Video Ref.	PACP Code	Continuous	S/M/L	Value Inches (mm)		%	Joint	Circumferential Location		Rating	Image Ref.	Remarks
					1st	2nd			At/From	To			
757.8 ft.	01:04:31	IDB						<input type="checkbox"/>	3 /		3	ROCK SWALE 72 IN INSPECTION-AMH 'MH10'-AMH 'MH9'-IDB at 757.8 ft.JPG	
785.1 ft.	01:05:56	MMS	F04	S				<input type="checkbox"/>	2 / 9		2	ROCK SWALE 72 IN INSPECTION-AMH 'MH10'-AMH 'MH9'-MMS at 785.2 ft.JPG	
785.2 ft.	01:05:17	AMH						<input type="checkbox"/>	/			ROCK SWALE 72 IN INSPECTION-AMH 'MH10'-AMH 'MH9'-AMH at 785.1 ft.JPG	MH10

Mainline length: 785.200 ft.
Surveyed length: 785.200 ft.

Omitted: 709.7 ft.

Stopped at 785.2 ft. against flow
on 6/26/2024 10:01:11 AM

AMH 'MH10'

136.8 ft.

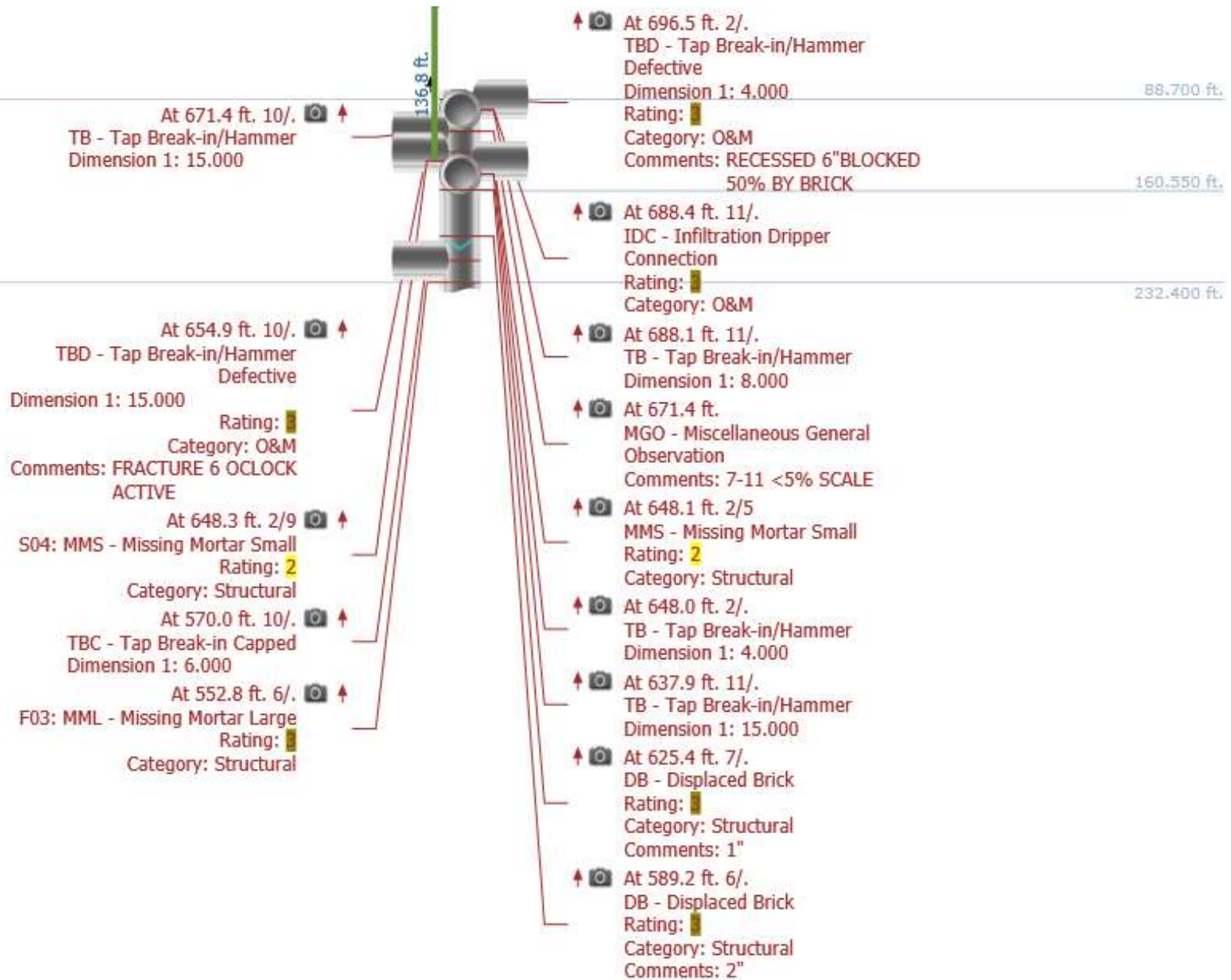
At 785.1 ft. 2/9
F04: MMS - Missing Mortar Small
Rating: 2
Category: Structural

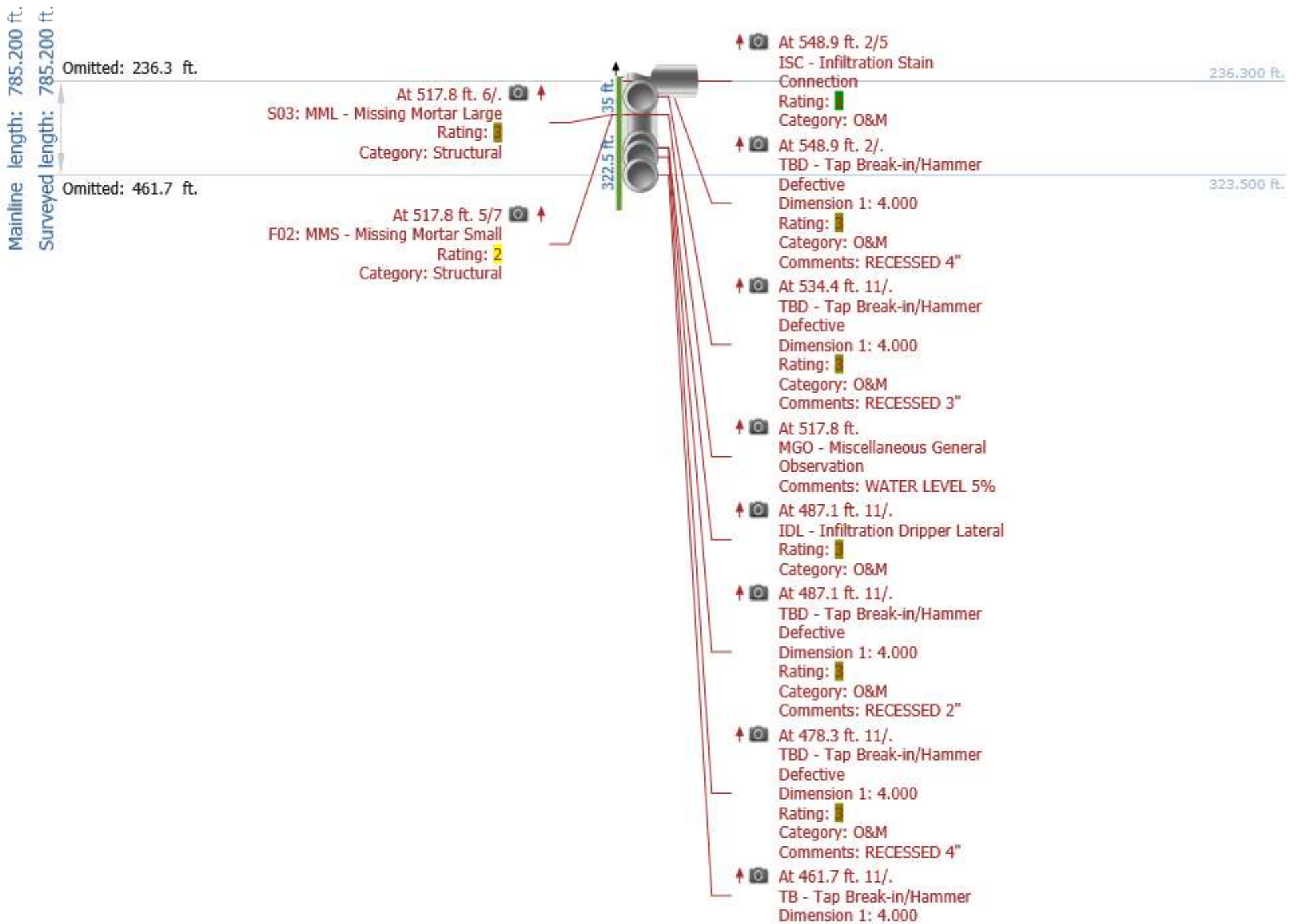
- At 785.2 ft.
AMH - Manhole
Comments: MH10
0.000 ft.
- At 757.8 ft. 3/.
IDB - Infiltration Dripper Barrel
Rating: ■
Category: O&M
75.500 ft.
- At 757.7 ft. 2/.
HVV - Hole Void Visible
Rating: ■
Category: Structural
Comments: BELOW TAP
- At 757.3 ft. 2/.
TBD - Tap Break-in/Hammer
Defective
Dimension 1: 4.000
Rating: ■
Category: O&M
Comments: RECESSED 4"
- At 719.6 ft. 2/5
ISB - Infiltration Stain Barrel
Rating: ■
Category: O&M
- At 719.5 ft. 2/.
TB - Tap Break-in/Hammer
Dimension 1: 4.000
- At 709.7 ft. 2/5
ISB - Infiltration Stain Barrel
Rating: ■
Category: O&M
- At 709.7 ft. 2/.
TBD - Tap Break-in/Hammer
Defective
Dimension 1: 8.000
Rating: ■
Category: O&M
Comments: RECESSED 6"

Mainline length: 785.200 ft.
 Surveyed length: 785.200 ft.

Omitted: 88.7 ft.

Omitted: 552.8 ft.





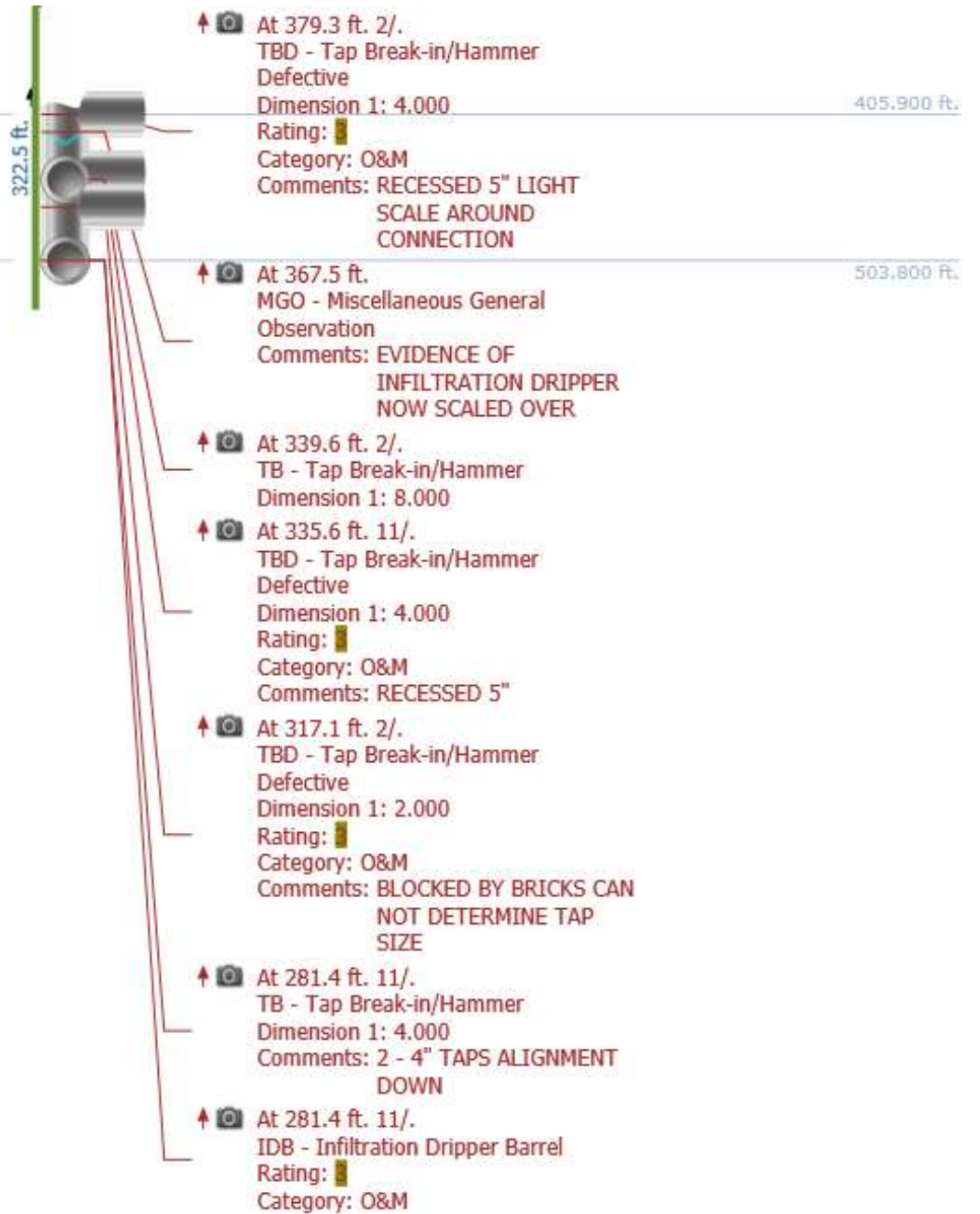
Mainline length: 785.200 ft.
 Surveyed length: 785.200 ft.
 Omitted: 330 ft.
 Omitted: 389.3 ft.

322.5 ft.



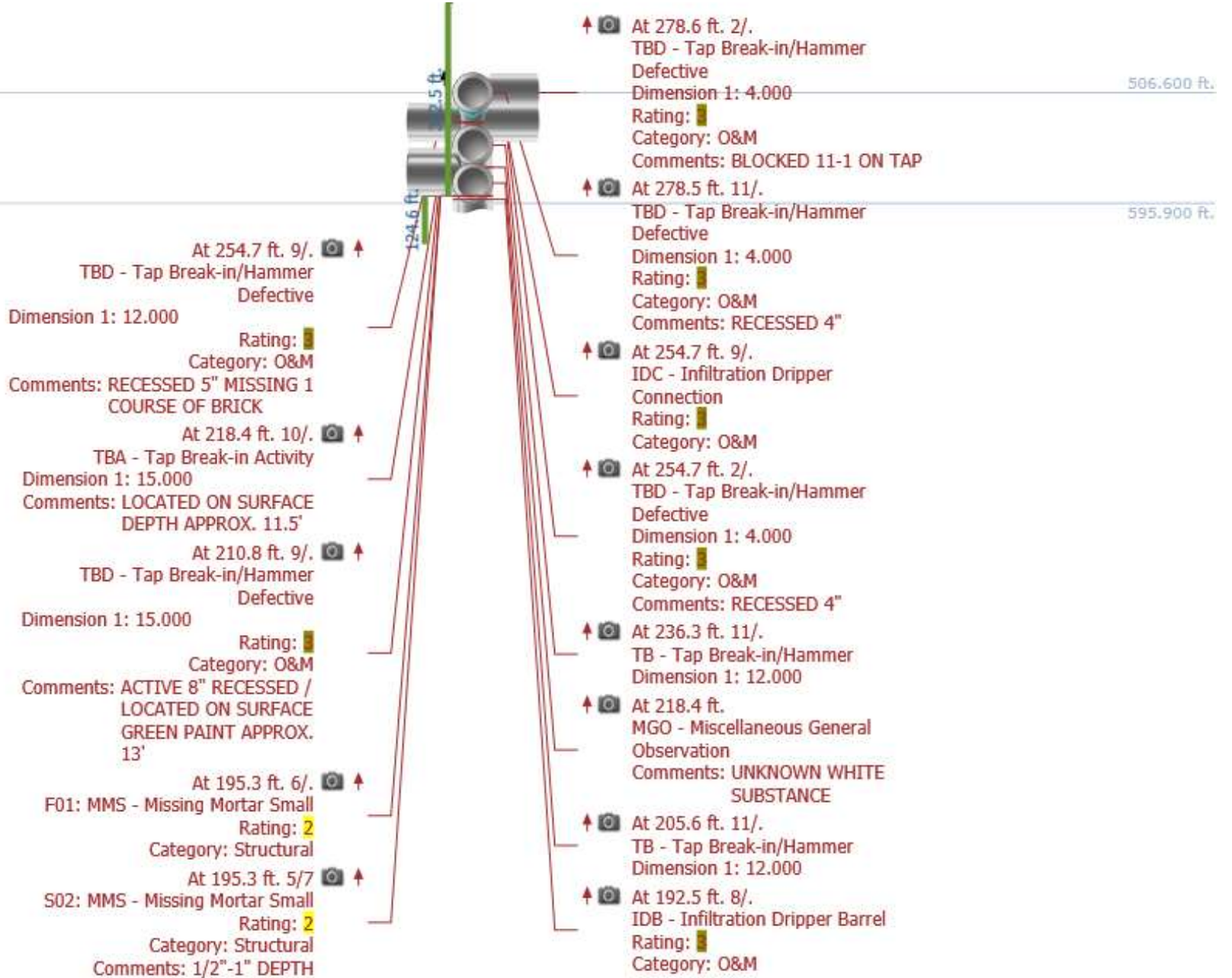
- ↑ 📷 At 455.2 ft. 6/.
 MB - Missing Brick
 Rating: 🟡
 Category: Structural
 Comments: 3" DEPTH IN INVERT NOT FULL BRICK
 330.000 ft.
- ↑ 📷 At 440.9 ft. 2/.
 TBD - Tap Break-in/Hammer Defective
 Dimension 1: 4.000
 Rating: 🟡
 Category: O&M
 Comments: ACTIVE AND RECESSED 2"
- ↑ 📷 At 402.1 ft. 3/.
 IDC - Infiltration Dripper Connection
 Rating: 🟡
 Category: O&M
- ↑ 📷 At 402.1 ft. 3/.
 TBD - Tap Break-in/Hammer Defective
 Dimension 1: 4.000
 Rating: 🟡
 Category: O&M
 Comments: RECESSED 3"
- ↑ 📷 At 396.5 ft. 11/.
 TB - Tap Break-in/Hammer
 Dimension 1: 4.000
- ↑ 📷 At 389.3 ft. 3/5
 DAR - Deposits Attached Ragging
 Rating: 2
 Category: O&M
 Comments: <5% EVIDENCE OF SANITARY ACTIVITY

Mainline length: 785.200 ft.
 Surveyed length: 785.200 ft.
 Omitted: 405.9 ft.
 Omitted: 281.4 ft.



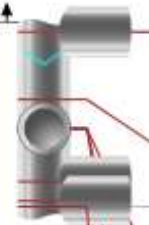
Mainline length: 785.200 ft.
 Surveyed length: 785.200 ft.

Omitted: 506.6 ft.
 Omitted: 189.3 ft.



Mainline length: 785.200 ft.
 Surveyed length: 785.200 ft.
 Omitted: 595.9 ft.
 Omitted: 81.9 ft.

124.6 ft.



- ↑ At 189.3 ft. 2/.
 TB - Tap Break-in/Hammer
 Dimension 1: 6.000
 595.900 ft.
- ↑ At 147.8 ft. 2/.
 IS - Infiltration Stain
 Rating: █
 Category: O&M
- ↑ At 129.9 ft.
 MSC - Miscellaneous Shape/Size
 Change
 Dimension 1: 66.000
 703.300 ft.
- ↑ At 129.9 ft. 11/.
 IDC - Infiltration Dripper
 Connection
 Rating: █
 Category: O&M
- ↑ At 129.9 ft. 11/.
 TB - Tap Break-in/Hammer
 Dimension 1: 4.000
- ↑ At 97.2 ft. 2/.
 TBD - Tap Break-in/Hammer
 Defective
 Dimension 1: 4.000
 Rating: █
 Category: O&M
 Comments: 9-3 OCLOCK OF TAP
 BLOCKED BY BRICK
- ↑ At 85.2 ft. 6/.
 TBD - Tap Break-in/Hammer
 Defective
 Dimension 1: 6.000
 Rating: █
 Category: O&M
 Comments: TAP IN INVERT 100%
 BLOCKED WITH DEBRIS
- ↑ At 81.9 ft. 11/.
 MB - Missing Brick
 Rating: █
 Category: Structural
 Comments: 1 COURSE MISSING
 AROUND TAP

Mainline length: 785.200 ft.
 Surveyed length: 785.200 ft.
 Omitted: 703.3 ft.

At 70.7 ft. 6/.
 S01: MMS - Missing Mortar Small
 Rating: 2
 Category: Structural

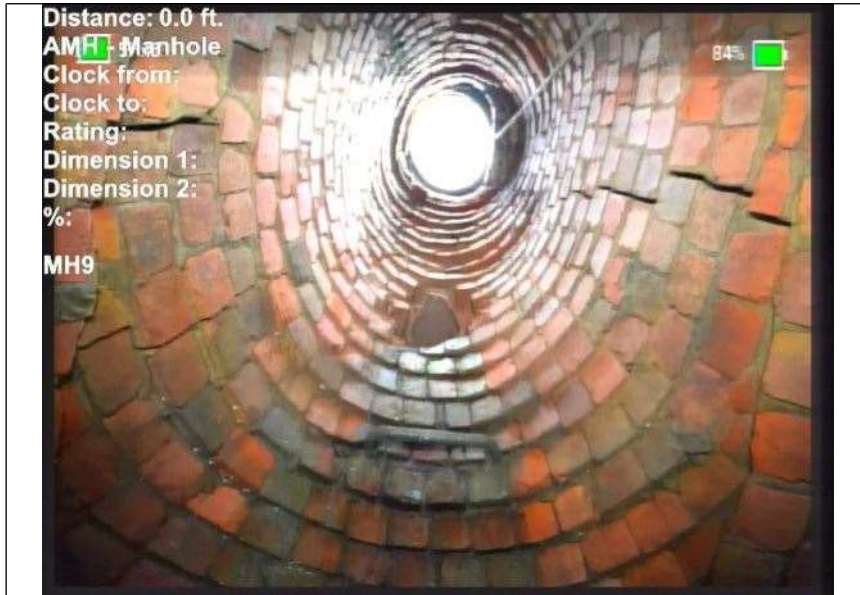
Started at 0.0 ft. against flow
 on 6/26/2024 8:39:01 AM

124.6 ft.

AMH 'MH9'

- At 81.9 ft. 11/.
 TB - Tap Break-in/Hammer
 Dimension 1: 4.000
- At 49.8 ft. 2/.
 TBD - Tap Break-in/Hammer
 Defective
 Dimension 1: 4.000
 Rating: 1
 Category: O&M
 Comments: BLOCKED 1 COURSE OF
 BRICK / INFILTRATION
 DRIPPER
- At 27.9 ft. 11/.
 TBA - Tap Break-in Activity
 Dimension 1: 8.000
- At 15.0 ft. 11/.
 TBA - Tap Break-in Activity
 Dimension 1: 4.000
- At 15.0 ft. 2/.
 TBA - Tap Break-in Activity
 Dimension 1: 8.000
- At 6.0 ft.
 MGO - Miscellaneous General
 Observation
 Comments: LIGHT SCALE LESS THAN
 5% 5-10 OCLOCK
 CONTINUOUS
- At 3.0 ft. 3/.
 SSS - Surface Damage Surface
 Spalling
 Rating: 2
 Category: Structural
 Comments: BRICKS DELAMINATED
 AND CHIPPING
- At 0.0 ft.
 MWL - Miscellaneous Water
 Level
- At 0.0 ft.
 AMH - Manhole
 Comments: MH9

Photos



Distance: 0.0 ft.
AMH - Manhole
Clock from:
Clock to:
Rating:
Dimension 1:
Dimension 2:
%:
MH9

84%

At: 0 ft. AMH - Manhole
Joint: No MH9



Start date/time: 8/26/2024 8:39 AM
Pipe segment ref.: Sewer Main 'MH10- MH9'
Project name: ROCK SWALE 72 IN INSPECTION
Surveyed by: ANDREW
City: MARION, OH
Street: 876 SILVER
Upstream MH No: AMH
Downstream MH No: AMH
Direction: U
Location code: C
Height: 72 in.
Width:
Shape: C
Material: BR
Weather: 1

84%

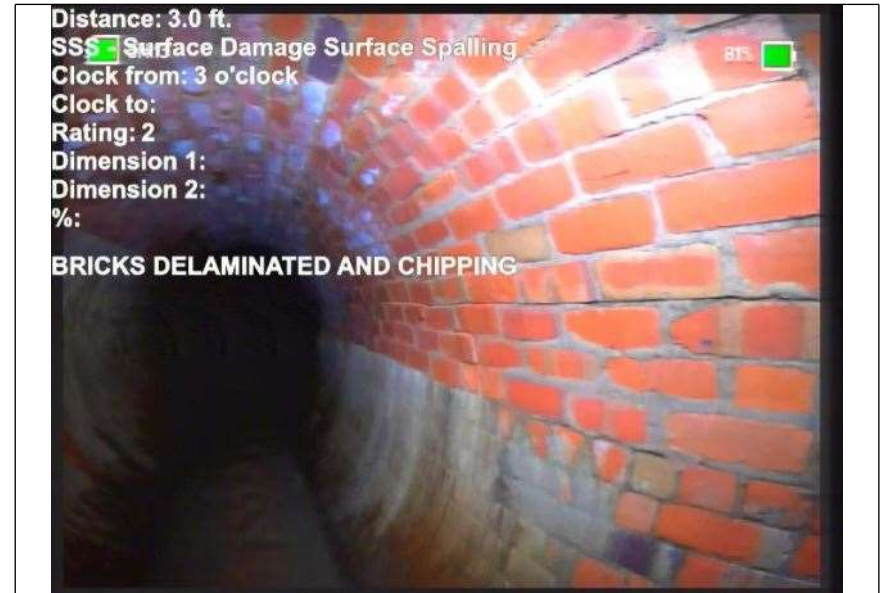
At: 0 ft. AMH - Manhole
Joint: No MH9



Distance: 0.0 ft.
MWL - Miscellaneous Water Level
Clock from:
Clock to:
Rating:
Dimension 1:
Dimension 2:
%: 10 %

83%

At: 0 ft. MWL - Miscellaneous Water Level
Joint: No 10 %

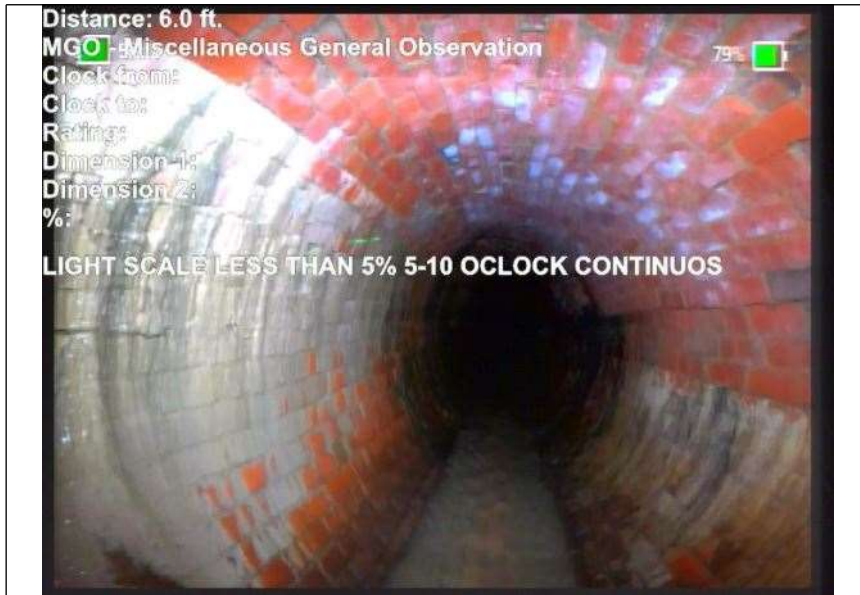


Distance: 3.0 ft.
SSS - Surface Damage Surface Spalling
Clock from: 3 o'clock
Clock to:
Rating: 2
Dimension 1:
Dimension 2:
%:
BRICKS DELAMINATED AND CHIPPING

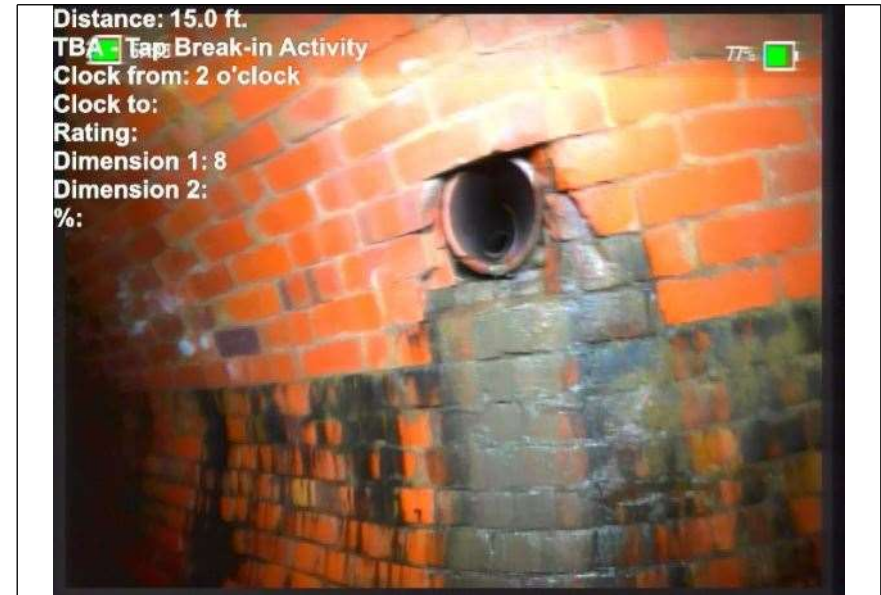
81%

At: 3 ft. 3/. SSS - Surface Damage Surface Spalling
Joint: No BRICKS DELAMINATED AND CHIPPING

Photos



At: 6 ft. MGO - Miscellaneous General Observation
Joint: No LIGHT SCALE LESS THAN 5% 5-10 OCLOCK CONTINUOUS



At: 15 ft. 2/. TBA - Tap Break-in Activity
Joint: No



At: 15 ft. 11/. TBA - Tap Break-in Activity
Joint: No



At: 27.9 ft. TBA - Tap Break-in Activity
8999996185
303 ft. 11/.
Joint: No

Photos



At: 49. 7999992370 TBD - Tap Break-in/Hammer Defective
605 ft. 2/.
Joint: No **BLOCKED 1 COURSE OF BRICK / INFILTRATION DRIPPER**



At: 70. 6999969482 MMS - Missing Mortar Small
422 ft. 6/.
Joint: No

Photos



At: 81. 9000015258 MB - Missing Brick
789 ft. 11/.
Joint: No 1 COURSE MISSING AROUND TAP



At: 81. 9000015258 TB - Tap Break-in/Hammer
789 ft. 11/.
Joint: No

Photos



At: 85. TBD - Tap Break-in/Hammer Defective
1999969482
422 ft. 6/.

Joint: No TAP IN INVERT 100% BLOCKED WITH DEBRIS



At: 97. TBD - Tap Break-in/Hammer Defective
1999969482
422 ft. 2/.

Joint: No 9-3 OCLOCK OF TAP BLOCKED BY BRICK

Photos



At: 129. IDC - Infiltration Dripper Connection
8999938964
84 ft. 11/.

Joint: No



At: 129. TB - Tap Break-in/Hammer
8999938964
84 ft. 11/.

Joint: No

Photos



At: 129. MSC - Miscellaneous Shape/Size Change
8999938964
84 ft.

Joint: No



At: 147. IS - Infiltration Stain
8000030517
58 ft. 2/.

Joint: No

Photos



At: 189. TB - Tap Break-in/Hammer
3000030517
58 ft. 2/.

Joint: No



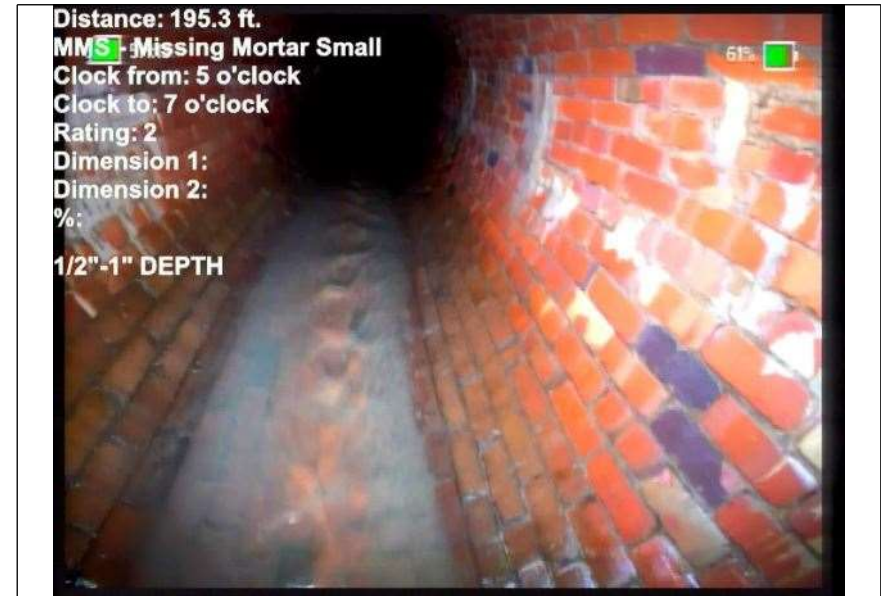
At: 192.5 ft. 8/. IDB - Infiltration Dripper Barrel
Joint: No

Photos



At: 195. MMS - Missing Mortar Small
3000030517
58 ft. 6/.

Joint: No



At: 195. MMS - Missing Mortar Small
3000030517
58 ft. 5/7

Joint: No 1/2"-1" DEPTH

Photos



At: 205. TB - Tap Break-in/Hammer
6000061035
16 ft. 11/.

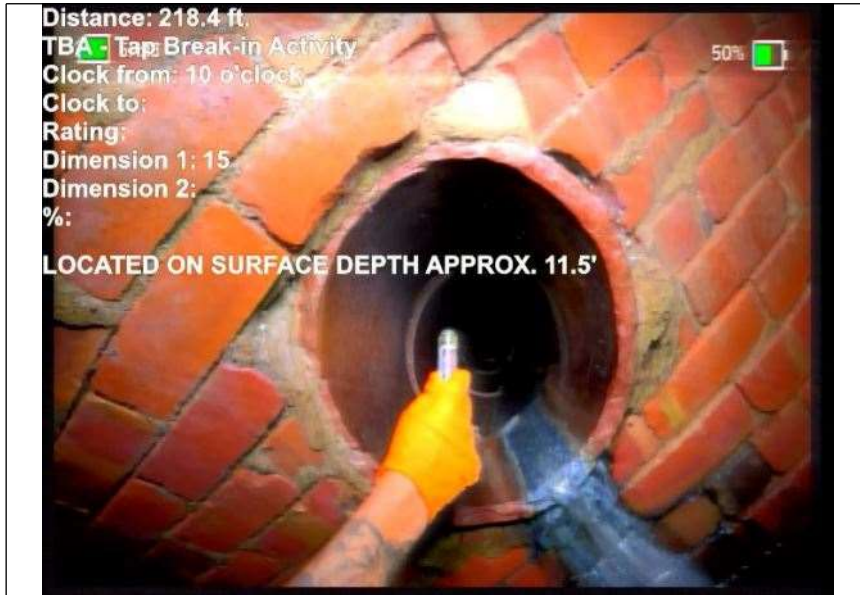
Joint: No



At: 210. TBD - Tap Break-in/Hammer Defective
8000030517
58 ft. 9/.

Joint: No ACTIVE 8" RECESSED / LOCATED ON SURFACE GREEN PAINT APPROX. 13'

Photos



At: 218. TBA - Tap Break-in Activity
3999938964
84 ft. 10/.

Joint: No LOCATED ON SURFACE DEPTH APPROX. 11.5'



At: 218. MGO - Miscellaneous General Observation
3999938964
84 ft.

Joint: No UNKNOWN WHITE SUBSTANCE

Photos



At: 236. TB - Tap Break-in/Hammer
3000030517
58 ft. 11/.

Joint: No



At: 254. TBD - Tap Break-in/Hammer Defective
6999969482
42 ft. 9/.

Joint: No RECESSED 5" MISSING 1 COURSE OF BRICK

Photos



At: 254. IDC - Infiltration Dripper Connection
6999969482
42 ft. 9/.

Joint: No



At: 254. IDC - Infiltration Dripper Connection
6999969482
42 ft. 9/.

Joint: No

Photos



At: 254. TBD - Tap Break-in/Hammer Defective
6999969482
42 ft. 2/.

Joint: No RECESSED 4"



At: 278.5 ft. 11/. TBD - Tap Break-in/Hammer Defective
Joint: No RECESSED 4"

Photos



At: 278. TBD - Tap Break-in/Hammer Defective
6000061035
16 ft. 2/.

Joint: No BLOCKED 11-1 ON TAP



At: 281. IDB - Infiltration Dripper Barrel
3999938964
84 ft. 11/.

Joint: No

Photos



At: 281. TB - Tap Break-in/Hammer
3999938964
84 ft. 11/.

Joint: No 2 - 4" TAPS ALIGNMENT DOWN



At: 317. TBD - Tap Break-in/Hammer Defective
1000061035
16 ft. 2/.

Joint: No BLOCKED BY BRICKS CAN NOT DETERMINE TAP SIZE

Photos



At: 335. TBD - Tap Break-in/Hammer Defective
6000061035
16 ft. 11/.

Joint: No RECESSED 5"



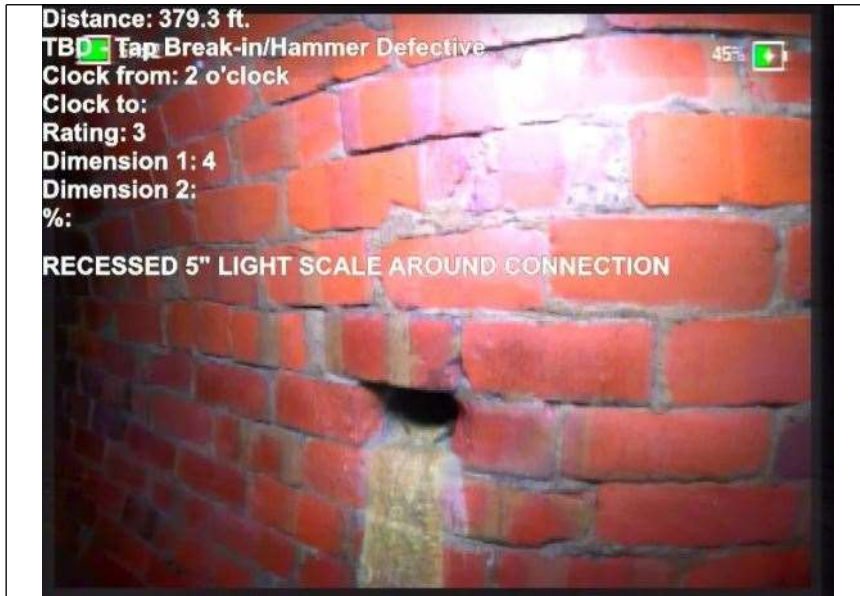
At: 339. TB - Tap Break-in/Hammer
6000061035
16 ft. 2/.

Joint: No



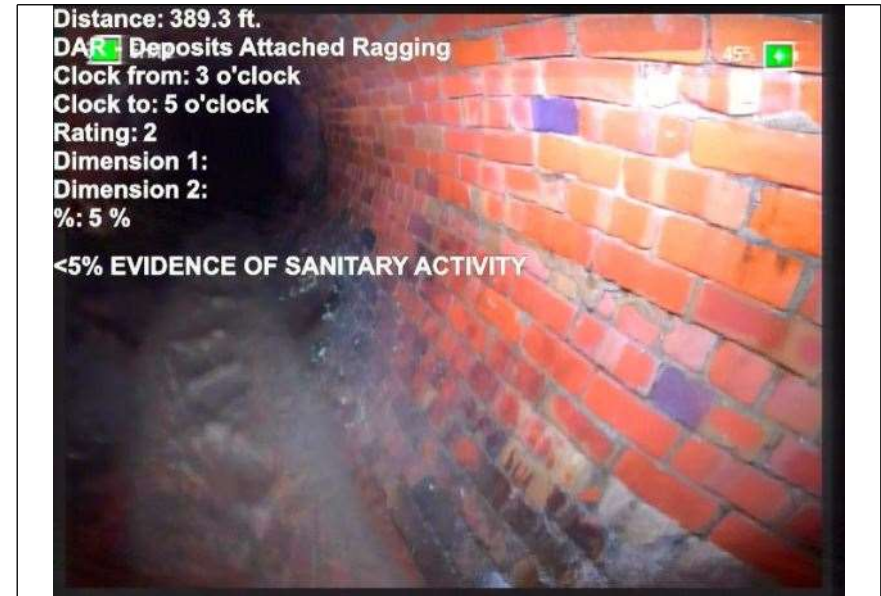
At: 367.5 ft. MGO - Miscellaneous General Observation
Joint: No EVIDENCE OF INFILTRATION DRIPPER NOW SCALED OVER

Photos



At: 379. 379.3 ft. TBD - Tap Break-in/Hammer Defective
2999877929
69 ft. 2/.

Joint: No RECESSED 5" LIGHT SCALE AROUND CONNECTION



At: 389. 389.3 ft. DAR - Deposits Attached Ragging
2999877929
69 ft. 3/5

Joint: No 5 % <5% EVIDENCE OF SANITARY ACTIVITY



At: 396.5 ft. 11/. TB - Tap Break-in/Hammer

Joint: No

Photos



At: 402. IDC - Infiltration Drinker Connection
1000061035
16 ft. 3/.

Joint: No



At: 402. TBD - Tap Break-in/Hammer Defective
1000061035
16 ft. 3/.

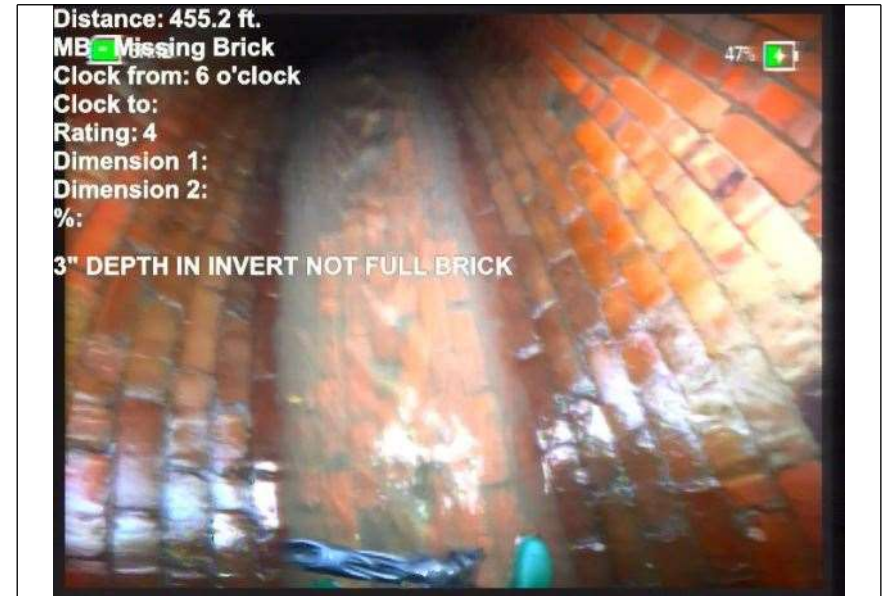
Joint: No RECESSED 3"

Photos



At: 440. TBD - Tap Break-in/Hammer Defective
8999938964
84 ft. 2/.

Joint: No ACTIVE AND RECESSED 2"



At: 455. MB - Missing Brick
2000122070
31 ft. 6/.

Joint: No 3" DEPTH IN INVERT NOT FULL BRICK

Photos



At: 461. TB - Tap Break-in/Hammer
7000122070
31 ft. 11/.

Joint: No



At: 478. TBD - Tap Break-in/Hammer Defective
2999877929
69 ft. 11/.

Joint: No RECESSED 4"

Photos



At: 487. TBD - Tap Break-in/Hammer Defective
1000061035
16 ft. 11/.

Joint: No RECESSED 2"



At: 487. IDL - Infiltration Dripper Lateral
1000061035
16 ft. 11/.

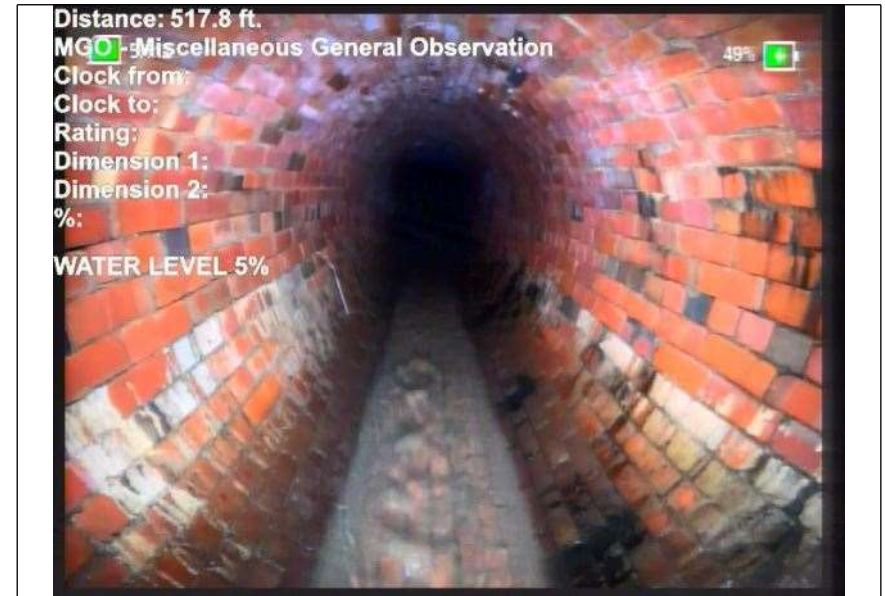
Joint: No

Photos



At: 517. MML - Missing Mortar Large
7999877929
69 ft. 6/.

Joint: No



At: 517. MGO - Miscellaneous General Observation
7999877929
69 ft.

Joint: No WATER LEVEL 5%

Photos



At: 517. MMS - Missing Mortar Small
7999877929
69 ft. 5/7

Joint: No



At: 534. TBD - Tap Break-in/Hammer Defective
400244140
63 ft. 11/.

Joint: No RECESSED 3"

Photos



At: 548. TBD - Tap Break-in/Hammer Defective
9000244140
63 ft. 2/.

Joint: No RECESSED 4"



At: 548. ISC - Infiltration Stain Connection
9000244140
63 ft. 2/5

Joint: No

Photos



At: 552. 7999877929 MML - Missing Mortar Large
69 ft. 6/.

Joint: No



At: 570 ft. 10/. TBC - Tap Break-in Capped
Joint: No

Photos



At: 589. DB - Displaced Brick
2000122070
31 ft. 6/.

Joint: No 2"



At: 625. DB - Displaced Brick
4000244140
63 ft. 7/.

Joint: No 1"

Photos



At: 637.9 ft. TB - Tap Break-in/Hammer
9000244140
63 ft. 11/.

Joint: No



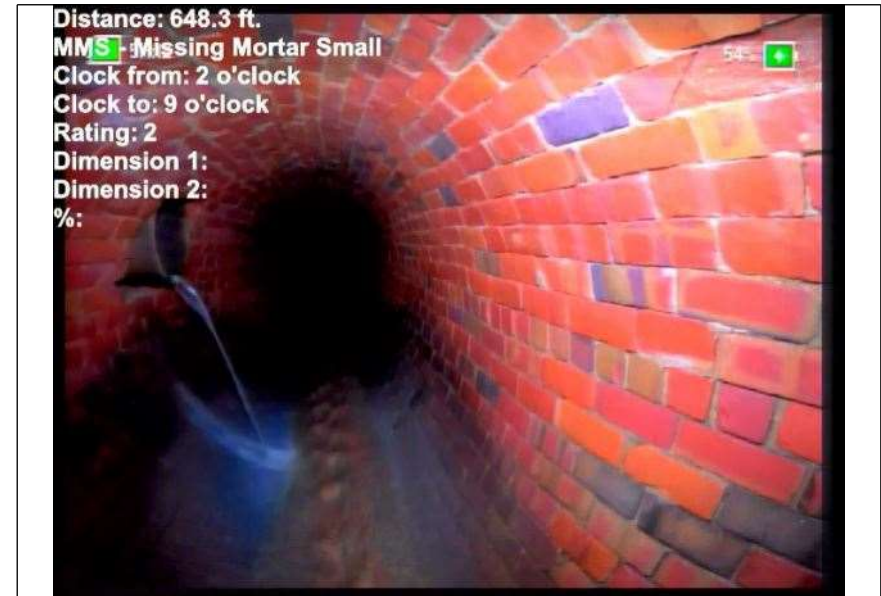
At: 648 ft. 2/. TB - Tap Break-in/Hammer
Joint: No

Photos



At: 648. MMS - Missing Mortar Small
0999755859
38 ft. 2/5

Joint: No



At: 648. MMS - Missing Mortar Small
2999877929
69 ft. 2/9

Joint: No

Photos



At: 654. TBD - Tap Break-in/Hammer Defective
9000244140
63 ft. 10/.

Joint: No FRACTURE 6 OCLOCK ACTIVE



At: 671. TB - Tap Break-in/Hammer
4000244140
63 ft. 10/.

Joint: No

Photos



At: 671. MGO - Miscellaneous General Observation
4000244140
63 ft.

Joint: No 7-11 <5% SCALE



At: 688. TB - Tap Break-in/Hammer
0999755859
38 ft. 11/.

Joint: No

Photos



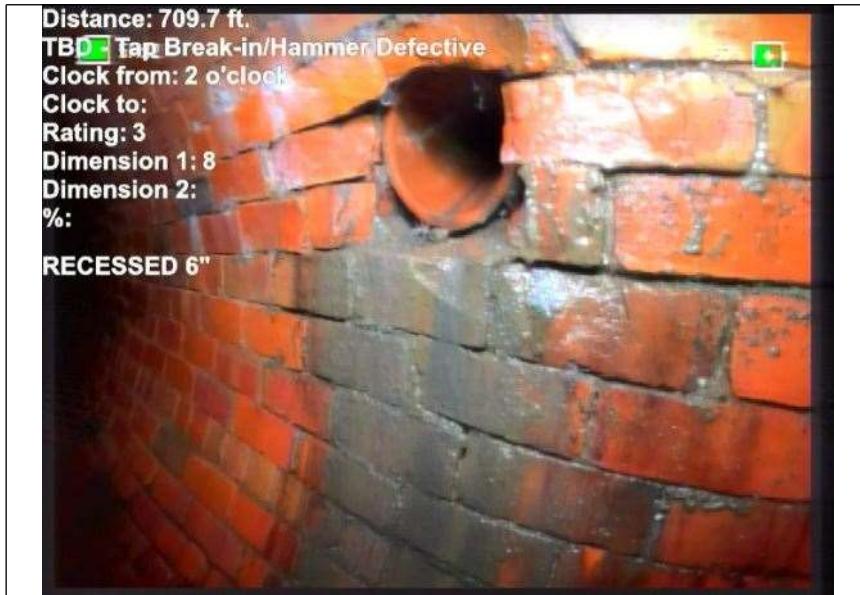
At: 688. IDC - Infiltration Drinker Connection
4000244140
63 ft. 11/.

Joint: No



At: 696.5 ft. 2/. TBD - Tap Break-in/Hammer Defective
Joint: No RECESSED 6"BLOCKED 50% BY BRICK

Photos



At: 709. 700122070
TBD - Tap Break-in/Hammer Defective
31 ft. 2/.

Joint: No RECESSED 6"



At: 709. 700122070
ISB - Infiltration Stain Barrel
31 ft. 2/5

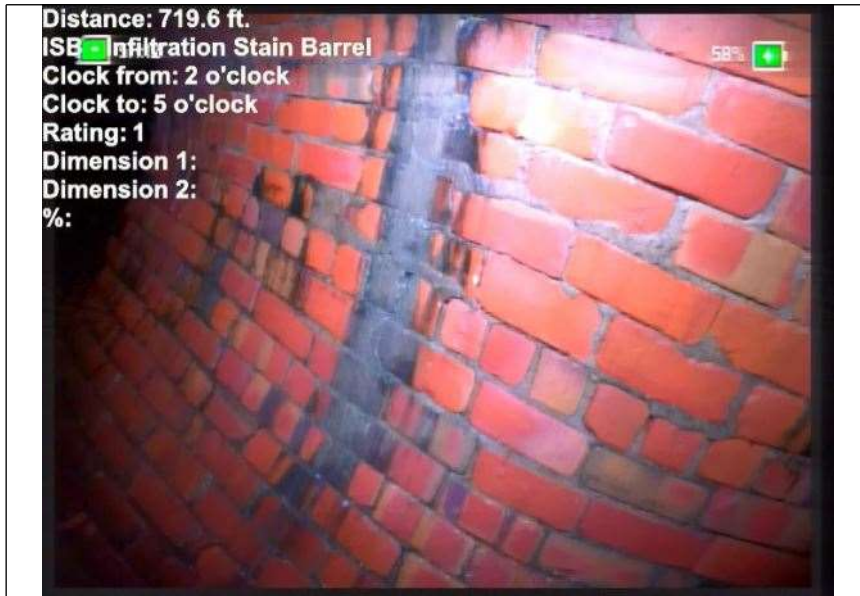
Joint: No



At: 719.5 ft. 2/. TB - Tap Break-in/Hammer

Joint: No

Photos



At: 719. ISB - Infiltration Stain Barrel
5999755859
38 ft. 2/5

Joint: No



At: 757. TBD - Tap Break-in/Hammer Defective
2999877929
69 ft. 2/.

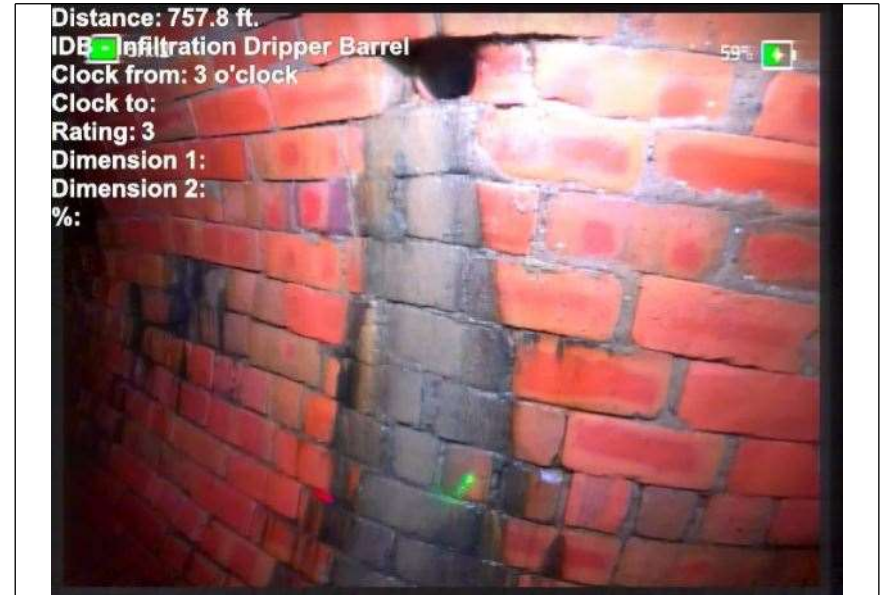
Joint: No RECESSED 4"

Photos



At: 757. 7000122070
31 ft. 2/

Joint: No BELOW TAP



At: 757. 7999877929
69 ft. 3/

Joint: No



At: 785.1 ft. 2/9 MMS - Missing Mortar Small

Joint: No



At: 785.2 ft. AMH - Manhole

Joint: No MH10