

## PACP Report with Pipe Run and Incident Snapshots

Surveyed by: <b>ANDREW</b>	Certificate number: <b>T-507-4975</b>	Owner: <b>CITY OF MARION</b>	Customer:	Drainage area:	P/O number:	Sheet number:
Pipe segment ref.: <b>MH7_MH6</b>	Start date/time: <b>20240626 14:55</b>	Street: <b>1045 HOLLAND RD.</b>	City: <b>MARION, OH</b>			
Location details:		Upstream MH No: <b>MH7</b>	Rim to invert:	Grade to invert:	Rim to grade:	
Pipe use: <b>CB</b>	Direction: <b>U</b>	Flow control:	Downstream MH No: <b>MH6</b>	Rim to invert:	Grade to invert:	Rim to grade:
Height: <b>72 in.</b>	Width:	Shape: <b>C</b>	Material: <b>BR</b>	Lining method:	Pipe joint length:	Total length: <b>1,023.500 ft.</b>
Media label:	Pre-cleaning: <b>N</b>	Date cleaned:	Weather: <b>1</b>	Length surveyed: <b>1,023.500 ft.</b>	Purpose: <b>B</b>	Sewer category:
Project name: <b>ROCK SWALE 72 IN INSPECTION</b>	Additional info:					

Grade	Structural:					O&M:					Overall:	
	Amount of Defects	Segment Grade	Pipe Rating	Quick Rating	Pipe Rating Index	Amount of Defects	Segment Grade	Pipe Rating	Quick Rating	Pipe Rating Index	Pipe Rating	Pipe Rating Index
1	0	0	404	5142	2.0	0	0	60	4536	2.7	464	2.1
2	194	388				11	22					
3	1	3				6	18					
4	2	8				5	20					
5	1	5				0	0					

## Observations

Distance	Video Ref.	PACP Code	Continuous	S/M/L	Value Inches (mm)		%	Joint	Circumferential Location		Rating	Image Ref.	Remarks
					1st	2nd			At/From	To			
0.0 ft.	00:00:14	MWL					20	<input type="checkbox"/>	/			ROCK SWALE 72 IN INSPECTION-AMH 'MH7A'-AMH 'MH6'-MWL at 0.0 ft.JPG	
0.0 ft.	00:00:03	AMH						<input type="checkbox"/>	/			ROCK SWALE 72 IN INSPECTION-AMH 'MH7A'-AMH 'MH6'-AMH at 0.0 ft.JPG	MH6
5.0 ft.	00:00:57	IRB						<input type="checkbox"/>	4 /		4	ROCK SWALE 72 IN INSPECTION-AMH 'MH7A'-AMH 'MH6'-IRB at 5.0 ft.JPG	
21.5 ft.	00:01:19	MGO						<input type="checkbox"/>	/			ROCK SWALE 72 IN INSPECTION-AMH 'MH7A'-AMH 'MH6'-MGO at 21.5 ft.JPG	DEPOSITS SETTLED LESS THAN 5%
43.8 ft.	00:02:10	IRB						<input type="checkbox"/>	4 /		4	ROCK SWALE 72 IN INSPECTION-AMH 'MH7A'-AMH 'MH6'-IRB at 43.8 ft.JPG	
57.8 ft.	00:02:28	MMS	S01	S				<input type="checkbox"/>	5 / 7		2	ROCK SWALE 72 IN INSPECTION-AMH 'MH7A'-AMH 'MH6'-MMS at 57.8 ft.JPG	
57.9 ft.	00:02:42	MGO						<input type="checkbox"/>	/			ROCK SWALE 72 IN INSPECTION-AMH 'MH7A'-AMH 'MH6'-MGO at 57.9 ft.JPG	DAE LESS THAN 5% 3-9 OCLOCK

## Observations

Distance	Video Ref.	PACP Code	Continuous	S/M/L	Value Inches (mm)		%	Joint	Circumferential Location		Rating	Image Ref.	Remarks
					1st	2nd			At/From	To			
93.8 ft.	00:03:26	MWL					10	<input type="checkbox"/>	/			ROCK SWALE 72 IN INSPECTION-AMH 'MH7A'-AMH 'MH6'-MWL at 93.8 ft.JPG	
174.1 ft.	00:05:03	TBD			6.000			<input type="checkbox"/>	11 /		3	ROCK SWALE 72 IN INSPECTION-AMH 'MH7A'-AMH 'MH6'-TBD at 174.1 ft.JPG	ID
174.2 ft.	00:05:16	IDL						<input type="checkbox"/>	11 /		3	ROCK SWALE 72 IN INSPECTION-AMH 'MH7A'-AMH 'MH6'-IDL at 174.2 ft.JPG	
256.2 ft.	00:06:19	TBI			24.000	10.000		<input type="checkbox"/>	3 /		3	ROCK SWALE 72 IN INSPECTION-AMH 'MH7A'-AMH 'MH6'-TBI at 256.2 ft.JPG	ACTIVE
431.3 ft.	00:08:40	IRB						<input type="checkbox"/>	8 /		4	ROCK SWALE 72 IN INSPECTION-AMH 'MH7A'-AMH 'MH6'-IRB at 431.3 ft.JPG	UNKNOWN WHITE STAINING
480.0 ft.	00:09:19	IRB						<input type="checkbox"/>	9 /		4	ROCK SWALE 72 IN INSPECTION-AMH 'MH7A'-AMH 'MH6'-IRB at 480.0 ft.JPG	
488.4 ft.	00:09:38	IDB						<input type="checkbox"/>	12 /		3	ROCK SWALE 72 IN INSPECTION-AMH 'MH7A'-AMH 'MH6'-IDB at 488.4 ft.JPG	MULTIPLE DRIPPERS

## Observations

Distance	Video Ref.	PACP Code	Continuous	S/M/L	Value Inches (mm)		%	Joint	Circumferential Location		Rating	Image Ref.	Remarks
					1st	2nd			At/From	To			
491.6 ft.	00:09:57	RFB						<input type="checkbox"/>	11 /		2	ROCK SWALE 72 IN INSPECTION-AMH 'MH7A'-AMH 'MH6'-RFB at 491.6 ft.JPG	
493.9 ft.	00:10:10	TBA			8.000			<input type="checkbox"/>	11 /			ROCK SWALE 72 IN INSPECTION-AMH 'MH7A'-AMH 'MH6'-TBA at 493.9 ft.JPG	
496.7 ft.	00:10:27	MB						<input type="checkbox"/>	12 /		4	ROCK SWALE 72 IN INSPECTION-AMH 'MH7A'-AMH 'MH6'-MB at 496.7 ft.JPG	1 COURSE
499.4 ft.	00:10:44	DB						<input type="checkbox"/>	12 /		3	ROCK SWALE 72 IN INSPECTION-AMH 'MH7A'-AMH 'MH6'-DB at 499.4 ft.JPG	DISPLACED 1/4"
601.1 ft.	00:12:07	RFB						<input type="checkbox"/>	10 /		2	ROCK SWALE 72 IN INSPECTION-AMH 'MH7'-AMH 'MH6'-RFB at 601.1 ft.JPG	
605.1 ft.	00:12:27	RFB						<input type="checkbox"/>	3 /		2	ROCK SWALE 72 IN INSPECTION-AMH 'MH7'-AMH 'MH6'-RFB at 605.1 ft.JPG	
605.2 ft.	00:12:43	RFB						<input type="checkbox"/>	9 /		2	ROCK SWALE 72 IN INSPECTION-AMH 'MH7'-AMH 'MH6'-RFB at 605.2 ft.JPG	
611.0 ft.	00:13:12	RTB					5	<input type="checkbox"/>	2 / 5		3	ROCK SWALE 72 IN INSPECTION-AMH 'MH7'-AMH 'MH6'-RTB at 611.0 ft.JPG	

## Observations

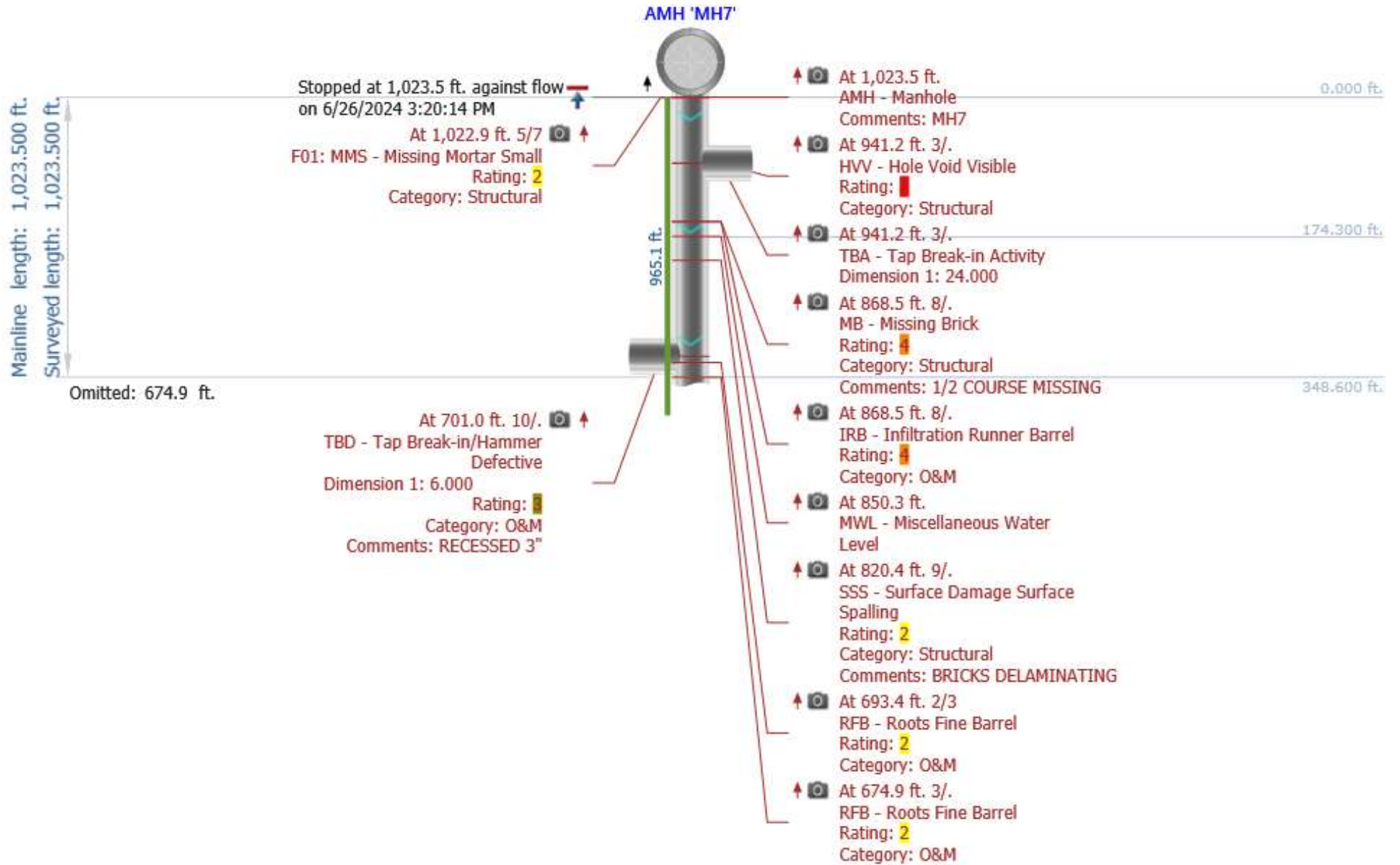
Distance	Video Ref.	PACP Code	Continuous	S/M/L	Value Inches (mm)		%	Joint	Circumferential Location		Rating	Image Ref.	Remarks
					1st	2nd			At/From	To			
612.6 ft.	00:13:39	MGO						<input type="checkbox"/>	/			ROCK SWALE 72 IN INSPECTION-AMH 'MH7'-AMH 'MH6'-MGO at 612.6 ft.JPG	APPEARS TO BE ROOTS UNDER DAE
618.2 ft.	00:14:05	RFB						<input type="checkbox"/>	9 /		2	ROCK SWALE 72 IN INSPECTION-AMH 'MH7'-AMH 'MH6'-RFB at 618.2 ft.JPG	
621.9 ft.	00:14:18	RFB						<input type="checkbox"/>	9 /		2	ROCK SWALE 72 IN INSPECTION-AMH 'MH7'-AMH 'MH6'-RFB at 621.9 ft.JPG	
639.5 ft.	00:14:42	RFB						<input type="checkbox"/>	2 /		2	ROCK SWALE 72 IN INSPECTION-AMH 'MH7'-AMH 'MH6'-RFB at 639.5 ft.JPG	
644.7 ft.	00:14:56	RFB						<input type="checkbox"/>	2 /		2	ROCK SWALE 72 IN INSPECTION-AMH 'MH7'-AMH 'MH6'-RFB at 644.7 ft.JPG	
662.8 ft.	00:15:19	RFB						<input type="checkbox"/>	2 /		2	ROCK SWALE 72 IN INSPECTION-AMH 'MH7'-AMH 'MH6'-RFB at 662.8 ft.JPG	
674.9 ft.	00:15:41	RFB						<input type="checkbox"/>	3 /		2	ROCK SWALE 72 IN INSPECTION-AMH 'MH7'-AMH 'MH6'-RFB at 674.9 ft.JPG	
693.4 ft.	00:16:06	RFB						<input type="checkbox"/>	2 / 3		2	ROCK SWALE 72 IN INSPECTION-AMH 'MH7'-AMH 'MH6'-RFB at 693.4 ft.JPG	

## Observations

Distance	Video Ref.	PACP Code	Continuous	S/M/L	Value Inches (mm)		%	Joint	Circumferential Location		Rating	Image Ref.	Remarks
					1st	2nd			At/From	To			
701.0 ft.	00:16:30	TBD			6.000			<input type="checkbox"/>	10 /		3	ROCK SWALE 72 IN INSPECTION-AMH 'MH7'-AMH 'MH6'-TBD at 701.0 ft.JPG	RECESSED 3"
820.4 ft.	00:18:38	SSS						<input type="checkbox"/>	9 /		2	ROCK SWALE 72 IN INSPECTION-AMH 'MH7'-AMH 'MH6'-SSS at 820.4 ft.JPG	BRICKS DELAMINATING
850.3 ft.	00:19:22	MWL					15	<input type="checkbox"/>	/			ROCK SWALE 72 IN INSPECTION-AMH 'MH7'-AMH 'MH6'-MWL at 850.3 ft.JPG	
868.5 ft.	00:19:47	IRB						<input type="checkbox"/>	8 /		4	ROCK SWALE 72 IN INSPECTION-AMH 'MH7'-AMH 'MH6'-IRB at 868.5 ft.JPG	
868.5 ft.	00:19:55	MB						<input type="checkbox"/>	8 /		4	ROCK SWALE 72 IN INSPECTION-AMH 'MH7'-AMH 'MH6'-MB at 868.5 ft.JPG	1/2 COURSE MISSING
941.2 ft.	00:21:40	HVV						<input type="checkbox"/>	3 /		5	ROCK SWALE 72 IN INSPECTION-AMH 'MH7'-AMH 'MH6'-HVV at 941.2 ft.JPG	
941.2 ft.	00:21:29	TBA			24.000			<input type="checkbox"/>	3 /			ROCK SWALE 72 IN INSPECTION-AMH 'MH7'-AMH 'MH6'-TBA at 941.2 ft.JPG	
1,022.9 ft.	00:23:00	MMS	F01	S				<input type="checkbox"/>	5 / 7		2	ROCK SWALE 72 IN INSPECTION-AMH 'MH7'-AMH 'MH6'-MMS at 1_022.9 ft.JPG	

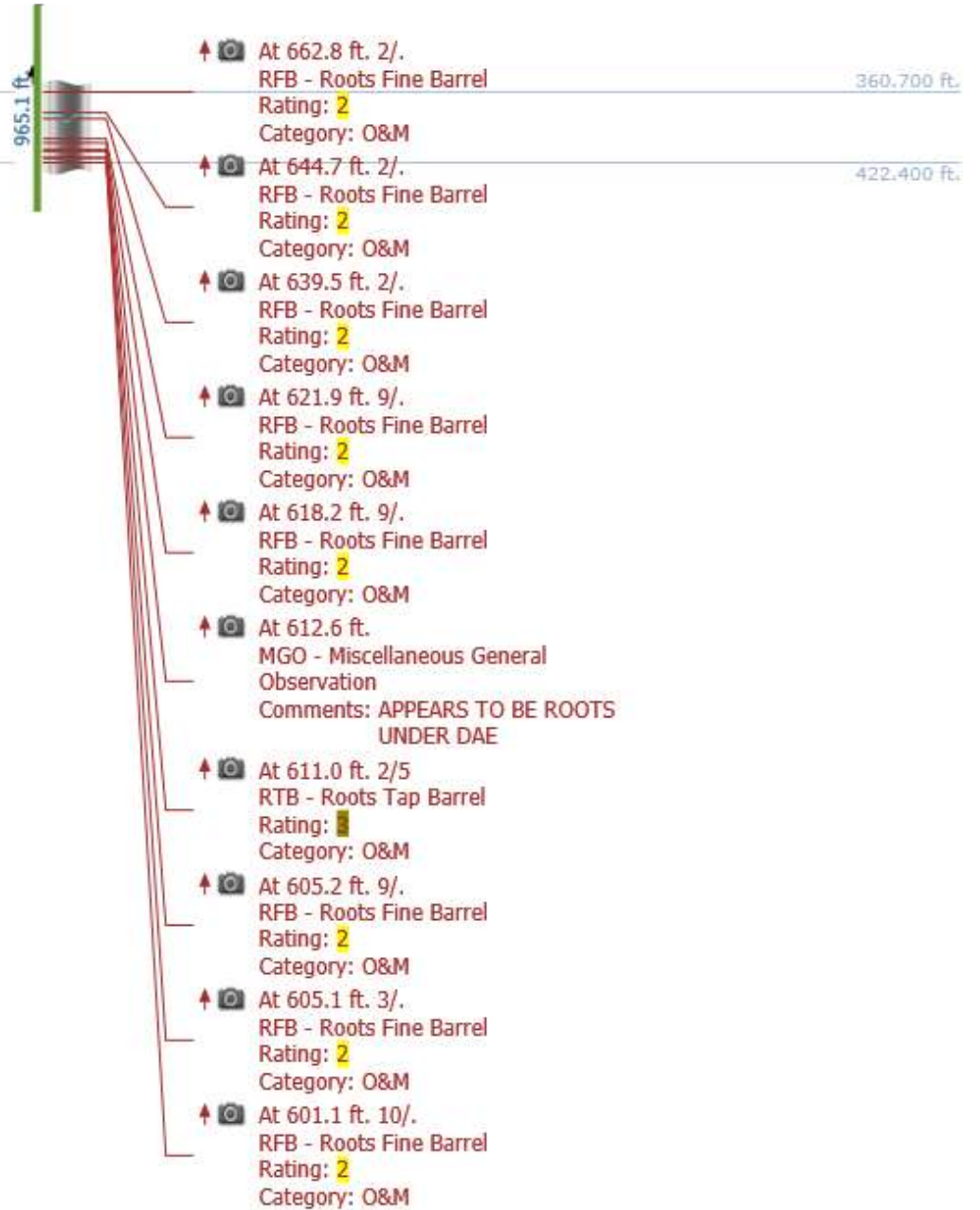
## Observations

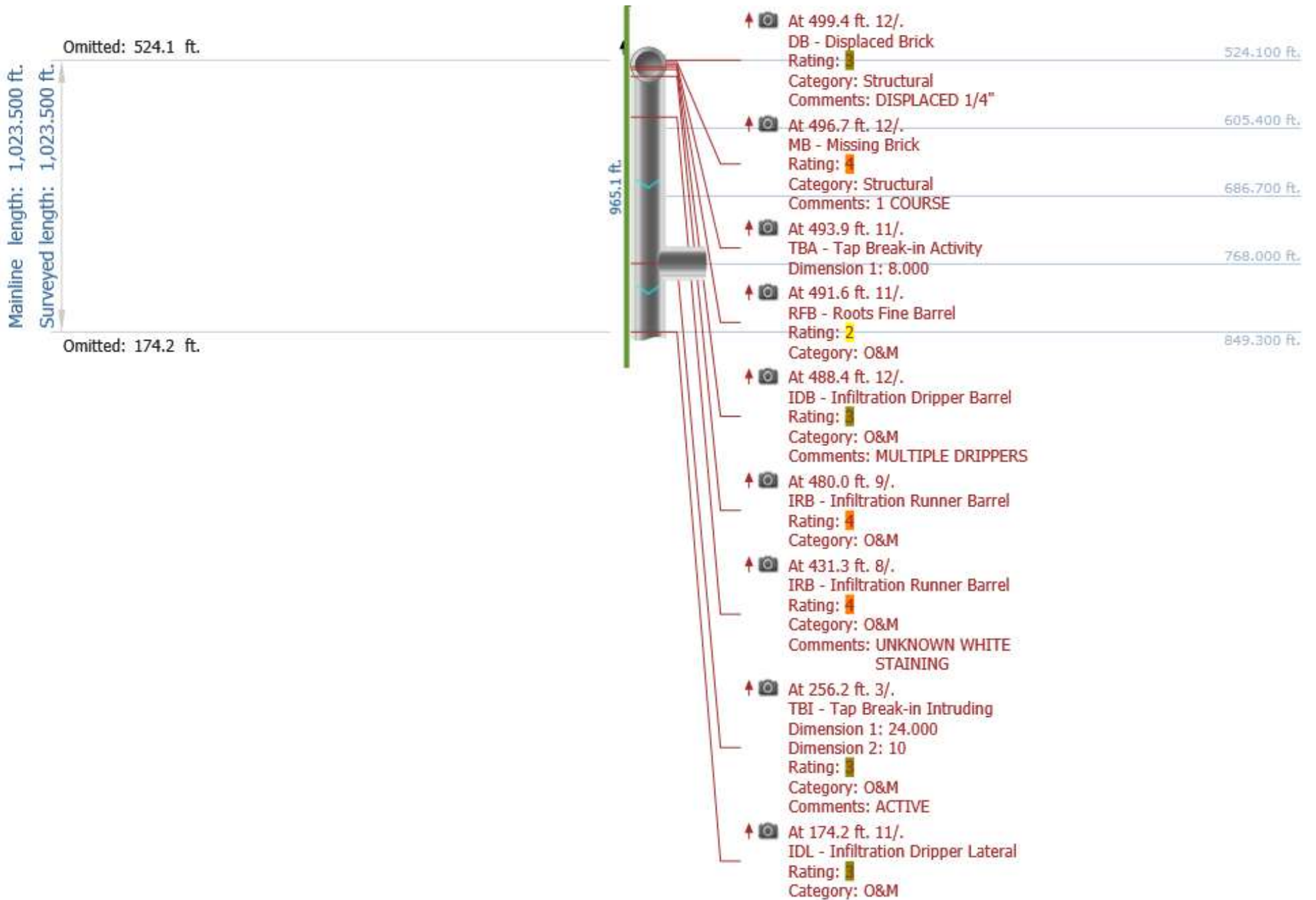
Distance	Video Ref.	PACP Code	Continuous	S/M/L	Value Inches (mm)		%	Joint	Circumferential Location		Rating	Image Ref.	Remarks
					1st	2nd			At/From	To			
1,023.5 ft.	00:23:20	AMH						<input type="checkbox"/>	/			ROCK SWALE 72 IN INSPECTION-AMH 'MH7'-AMH 'MH6'-AMH at 1_023.5 ft.JPG	MH7





Mainline length: 1,023.500 ft.  
Omitted: 360.7 ft.  
Surveyed length: 1,023.500 ft.  
Omitted: 601.1 ft.





Mainline length: 1,023.500 ft.  
 Surveyed length: 1,023.500 ft.  
 Omitted: 849.4 ft.

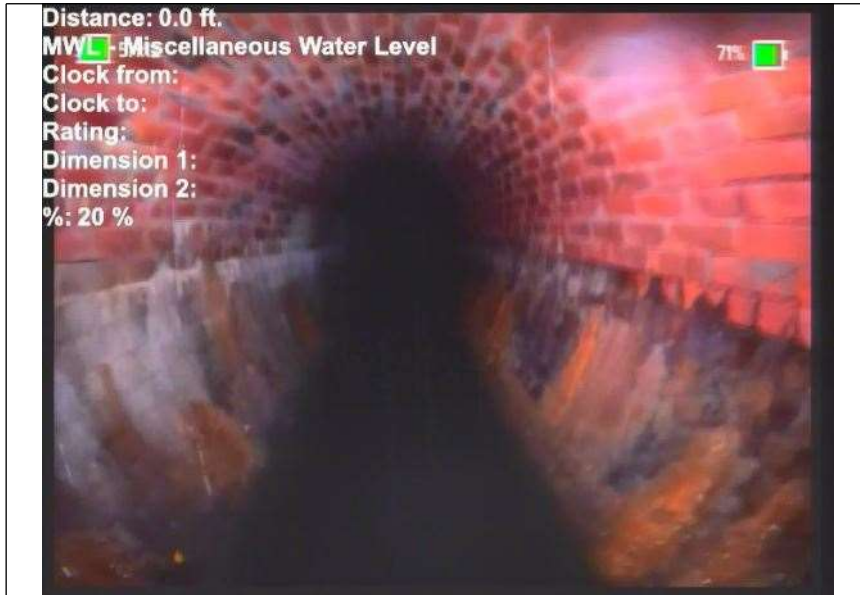
At 57.8 ft. 5/7 ↑  
 S01: MMS - Missing Mortar Small  
 Rating: 2  
 Category: Structural  
 Started at 0.0 ft. against flow  
 on 6/26/2024 2:55:22 PM

AMH 'MH6'

965.1 ft.

- ↑ At 174.1 ft. 11/.  
 TBD - Tap Break-in/Hammer  
 Defective  
 Dimension 1: 6.000  
 Rating:   
 Category: O&M  
 Comments: ID 849.400 ft.
- ↑ At 93.8 ft.  
 MWL - Miscellaneous Water  
 Level 1023.500 ft.
- ↑ At 57.9 ft.  
 MGO - Miscellaneous General  
 Observation  
 Comments: DAE LESS THAN 5% 3-9  
 OCLOCK
- ↑ At 43.8 ft. 4/.  
 IRB - Infiltration Runner Barrel  
 Rating:   
 Category: O&M
- ↑ At 21.5 ft.  
 MGO - Miscellaneous General  
 Observation  
 Comments: DEPOSITS SETTLED LESS  
 THAN 5%
- ↑ At 5.0 ft. 4/.  
 IRB - Infiltration Runner Barrel  
 Rating:   
 Category: O&M
- ↑ At 0.0 ft.  
 MWL - Miscellaneous Water  
 Level
- ↑ At 0.0 ft.  
 AMH - Manhole  
 Comments: MH6

# Photos



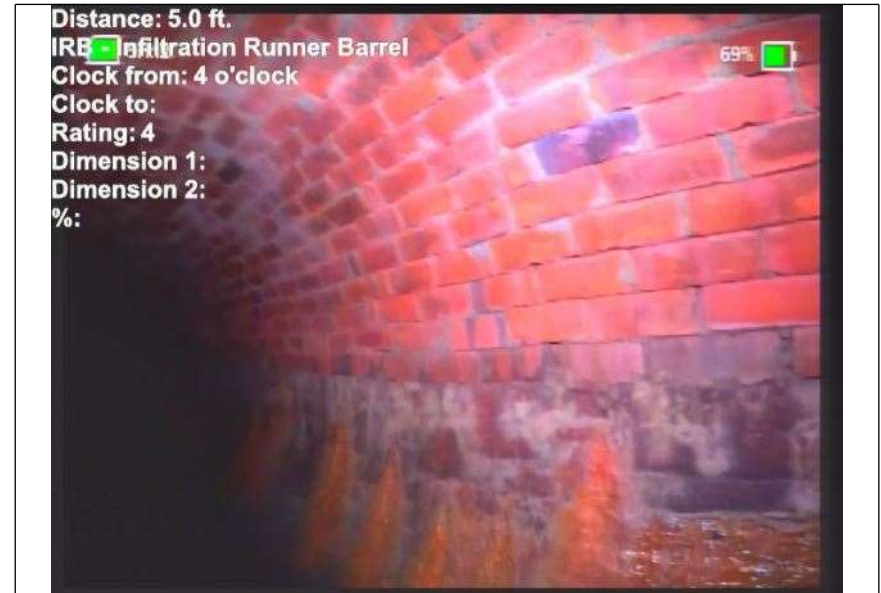
At: 0 ft. MWL - Miscellaneous Water Level  
Joint: No 20 %



At: 0 ft. AMH - Manhole  
Joint: No MH6



At: 0 ft. AMH - Manhole  
Joint: No MH6



At: 5 ft. 4/. IRB - Infiltration Runner Barrel  
Joint: No

## Photos



At: 21.5 ft. MGO - Miscellaneous General Observation  
Joint: No DEPOSITS SETTLED LESS THAN 5%



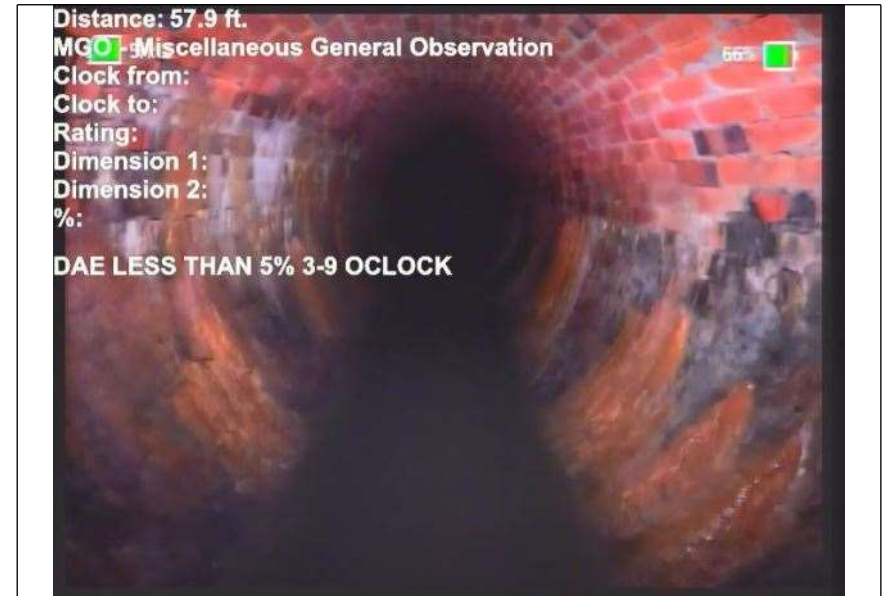
At: 43.8 ft. IRB - Infiltration Runner Barrel  
7999992370  
605 ft. 4/.  
Joint: No

## Photos



At: 57. MMS - Missing Mortar Small  
7999992370  
605 ft. 5/7

Joint: No



At: 57. MGO - Miscellaneous General Observation  
9000015258  
789 ft.

Joint: No DAE LESS THAN 5% 3-9 OCLOCK

## Photos



At: 93. MWL - Miscellaneous Water Level  
8000030517  
578 ft.

Joint: No 10 %



At: 174. TBD - Tap Break-in/Hammer Defective  
1000061035  
16 ft. 11/.

Joint: No ID

## Photos



At: 174. IDL - Infiltration Dripper Lateral  
1999969482  
42 ft. 11/.

Joint: No



At: 256. TBI - Tap Break-in Intruding  
2000122070  
31 ft. 3/.

Joint: No ACTIVE



## Photos



At: 431. IRB - Infiltration Runner Barrel  
2999877929  
69 ft. 8/.

Joint: No UNKNOWN WHITE STAINING



At: 480 ft. 9/. IRB - Infiltration Runner Barrel

Joint: No

## Photos



At: 488. IDB - Infiltration Dripper Barrel  
3999938964  
84 ft. 12/.

Joint: No MULTIPLE DRIPPERS



At: 491. RFB - Roots Fine Barrel  
6000061035  
16 ft. 11/.

Joint: No

## Photos



At: 493. TBA - Tap Break-in Activity  
8999938964  
84 ft. 11/.

Joint: No



At: 496. MB - Missing Brick  
7000122070  
31 ft. 12/.

Joint: No 1 COURSE

## Photos



At: 499. DB - Displaced Brick  
3999938964  
84 ft. 12/.

Joint: No **DISPLACED 1/4"**



At: 601. RFB - Roots Fine Barrel  
0999755859  
38 ft. 10/.

Joint: No **DISPLACED 1/4"**

## Photos



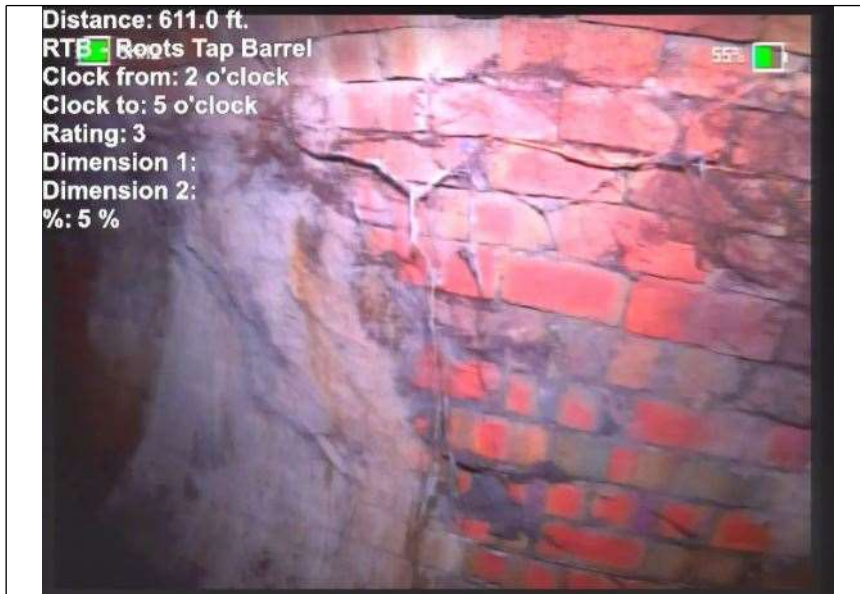
At: 605. RFB - Roots Fine Barrel  
0999755859  
38 ft. 3/.

Joint: No



At: 605. RFB - Roots Fine Barrel  
2000122070  
31 ft. 9/.

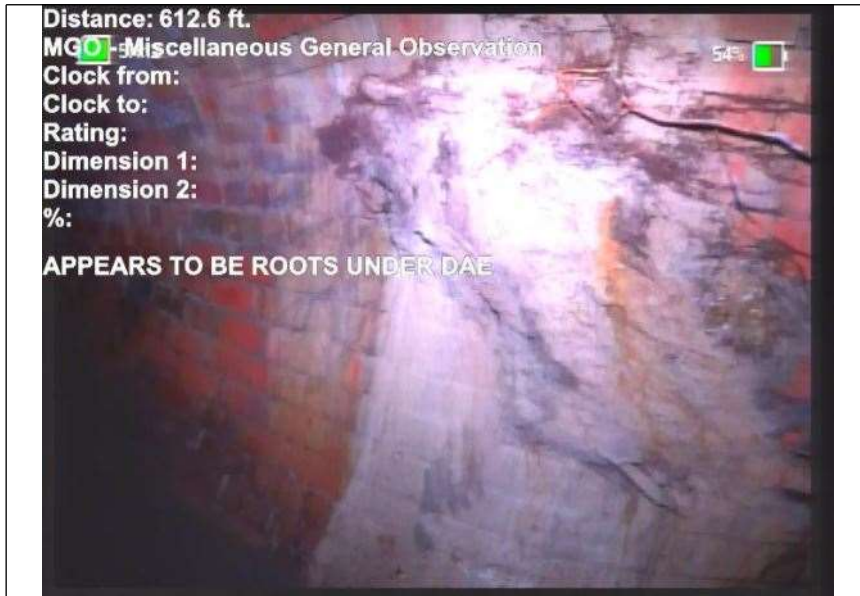
Joint: No



At: 611 ft. 2/5 RTB - Roots Tap Barrel

Joint: No 5 %

## Photos



At: 612. MGO - Miscellaneous General Observation  
5999755859  
38 ft.

Joint: No APPEARS TO BE ROOTS UNDER DAE



At: 618. RFB - Roots Fine Barrel  
2000122070  
31 ft. 9/.

Joint: No

## Photos



At: 621. 9000244140 RFB - Roots Fine Barrel  
63 ft. 9/.

Joint: No



At: 639.5 ft. 2/. RFB - Roots Fine Barrel  
Joint: No

## Photos



At: 644. RFB - Roots Fine Barrel  
7000122070  
31 ft. 2/.

Joint: No



At: 662. RFB - Roots Fine Barrel  
7999877929  
69 ft. 2/.

Joint: No



## Photos



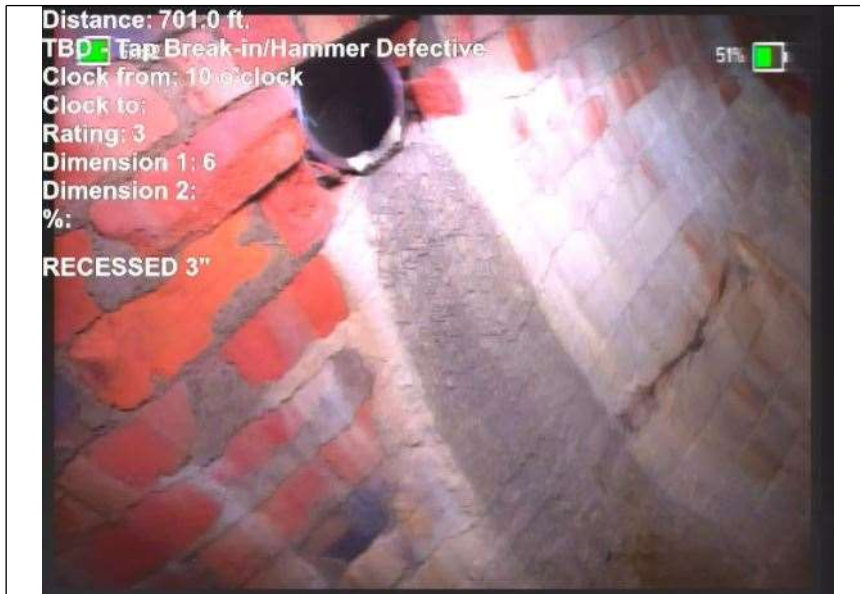
At: 674. RFB - Roots Fine Barrel  
9000244140  
63 ft. 3/.

Joint: No



At: 693. RFB - Roots Fine Barrel  
4000244140  
63 ft. 2/3

Joint: No



At: 701 ft. 10/. TBD - Tap Break-in/Hammer Defective

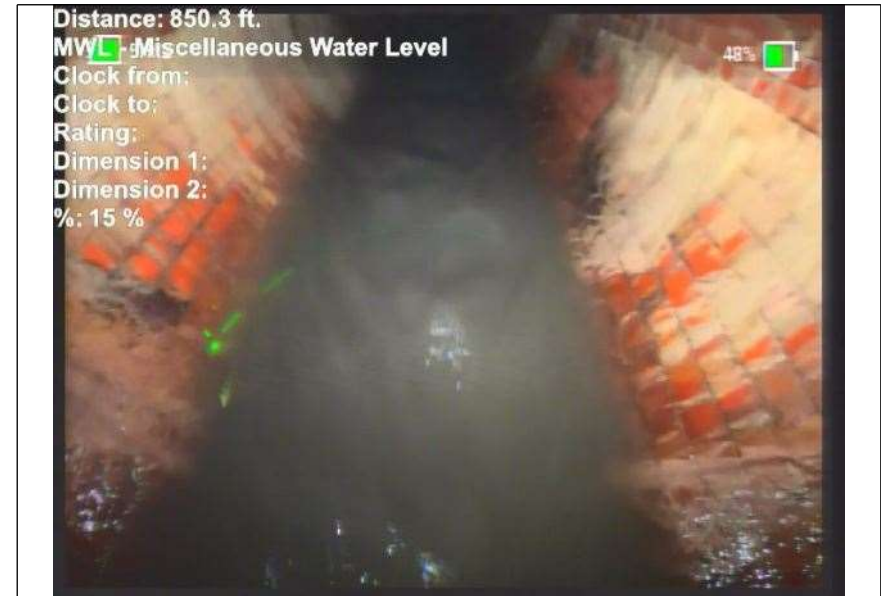
Joint: No RECESSED 3"

## Photos



At: 820. 820.4 ft. SSS - Surface Damage Surface Spalling  
4000244140  
63 ft. 9/.

Joint: No BRICKS DELAMINATING



At: 850. 850.3 ft. MWL - Miscellaneous Water Level  
2999877929  
69 ft.

Joint: No 15 %



At: 868.5 ft. 8/. IRB - Infiltration Runner Barrel

Joint: No



At: 868.5 ft. 8/. MB - Missing Brick

Joint: No 1/2 COURSE MISSING

## Photos



At: 941. 2000122070  
31 ft. 3/.

Joint: No



At: 941. 2000122070  
31 ft. 3/.

Joint: No

## Photos



At: 1022. MMS - Missing Mortar Small  
9000244140  
6 ft. 5/7

Joint: No



At: 1023.5 ft. AMH - Manhole  
Joint: No MH7