

## PACP Report with Pipe Run and Incident Snapshots

Surveyed by: <b>ANDREW</b>		Certificate number: <b>T-507-4975</b>		Owner: <b>CITY OF MARION</b>		Customer:		Drainage area:		P/O number:		Sheet number:							
Pipe segment ref.: <b>MH6_MH5</b>				Start date/time: <b>20240626 14:07</b>		Street: <b>1045 HOLLAND RD.</b>				City: <b>MARION, OH</b>									
Location details:				Upstream MH No: <b>MH6</b>				Rim to invert:		Grade to invert:		Rim to grade:							
Pipe use: <b>CB</b>		Direction: <b>D</b>		Flow control:		Downstream MH No: <b>MH5</b>				Rim to invert:		Grade to invert:		Rim to grade:					
Height: <b>72 in.</b>		Width:		Shape: <b>C</b>		Material: <b>BR</b>		Lining method:		Pipe joint length:		Total length: <b>995.000 ft.</b>		Length surveyed: <b>995.000 ft.</b>		Purpose: <b>B</b>		Sewer category:	
Media label:				Pre-cleaning: <b>N</b>		Date cleaned:		Weather: <b>1</b>		Location code: <b>C</b>		Pressure value:							
Project name: <b>ROCK SWALE 72 IN INSPECTION</b>				Additional info:															

Grade	Structural:					O&M:					Overall:	
	Amount of Defects	Segment Grade	Pipe Rating	Quick Rating	Pipe Rating Index	Amount of Defects	Segment Grade	Pipe Rating	Quick Rating	Pipe Rating Index	Pipe Rating	Pipe Rating Index
1	0	0	651	5141	2.9	0	0	132	514D	3.8	783	3.0
2	21	42				3	6					
3	200	600				3	9					
4	1	4				28	112					
5	1	5				1	5					

## Observations

Distance	Video Ref.	PACP Code	Continuous	S/M/L	Value Inches (mm)		%	Joint	Circumferential Location		Rating	Image Ref.	Remarks
					1st	2nd			At/From	To			
0.0 ft.	00:00:02	AMH						<input type="checkbox"/>	/			ROCK SWALE 72 IN INSPECTION-AMH 'MH6'-AMH 'MH5'-AMH at 0.0 ft_1.JPG	MH6
0.0 ft.	00:00:15	MWL					10	<input type="checkbox"/>	/			ROCK SWALE 72 IN INSPECTION-AMH 'MH6'-AMH 'MH5'-MWL at 0.0 ft_1.JPG	
5.0 ft.	00:01:00	DB						<input type="checkbox"/>	9 /		3	ROCK SWALE 72 IN INSPECTION-AMH 'MH6'-AMH 'MH5'-DB at 5.0 ft.JPG	
5.0 ft.	00:01:19	SSS						<input type="checkbox"/>	9 /		2	ROCK SWALE 72 IN INSPECTION-AMH 'MH6'-AMH 'MH5'-SSS at 5.0 ft.JPG	CHIPPED SURFACE
6.9 ft.	00:01:51	MMM	S01	M				<input type="checkbox"/>	5 / 7		3	ROCK SWALE 72 IN INSPECTION-AMH 'MH6'-AMH 'MH5'-MMM at 6.9 ft.JPG	
7.4 ft.	00:02:26	MGO						<input type="checkbox"/>	/			ROCK SWALE 72 IN INSPECTION-AMH 'MH6'-AMH 'MH5'-MGO at 7.4 ft.JPG	DAE LESS THAN 5% 9-3 VARRYING IN POSITION CONTINUOUS
25.3 ft.	00:03:20	TBD				12.000		<input type="checkbox"/>	10 /		3	ROCK SWALE 72 IN INSPECTION-AMH 'MH6'-AMH 'MH5'-TBD at 25.3 ft.JPG	BLOCKED 10-2 BRICK
29.0 ft.	00:03:54	IRB						<input type="checkbox"/>	8 /		4	ROCK SWALE 72 IN INSPECTION-AMH 'MH6'-AMH 'MH5'-IRB at 29.0 ft.JPG	

## Observations

Distance	Video Ref.	PACP Code	Continuous	S/M/L	Value Inches (mm)		%	Joint	Circumferential Location		Rating	Image Ref.	Remarks
					1st	2nd			At/From	To			
35.1 ft.	00:04:20	IRB						<input type="checkbox"/>	8 /	4	ROCK SWALE 72 IN INSPECTION-AMH 'MH6'-AMH 'MH5'-IRB at 35.1 ft.JPG		
44.8 ft.	00:04:40	IRB						<input type="checkbox"/>	8 /	4	ROCK SWALE 72 IN INSPECTION-AMH 'MH6'-AMH 'MH5'-IRB at 44.8 ft.JPG		
70.0 ft.	00:05:13	IRB						<input type="checkbox"/>	8 /	4	ROCK SWALE 72 IN INSPECTION-AMH 'MH6'-AMH 'MH5'-IRB at 70.0 ft.JPG		
113.3 ft.	00:06:02	IRB						<input type="checkbox"/>	8 /	4	ROCK SWALE 72 IN INSPECTION-AMH 'MH6'-AMH 'MH5'-IRB at 113.3 ft.JPG		
147.7 ft.	00:06:40	IRB						<input type="checkbox"/>	7 /	4	ROCK SWALE 72 IN INSPECTION-AMH 'MH6'-AMH 'MH5'-IRB at 147.7 ft.JPG		
147.8 ft.	00:06:54	MGO						<input type="checkbox"/>	/		ROCK SWALE 72 IN INSPECTION-AMH 'MH6'-AMH 'MH5'-MGO at 147.8 ft.JPG	UNKNOWN WHITE STAINING	
160.9 ft.	00:07:18	TBD			8.000			<input type="checkbox"/>	1 /	3	ROCK SWALE 72 IN INSPECTION-AMH 'MH6'-AMH 'MH5'-TBD at 160.9 ft.JPG	CONCRETE IN INVERT OF PIPE	
200.8 ft.	00:08:17	IRB						<input type="checkbox"/>	4 /	4	ROCK SWALE 72 IN INSPECTION-AMH 'MH6'-AMH 'MH5'-IRB at 200.8 ft.JPG		

## Observations

Distance	Video Ref.	PACP Code	Continuous	S/M/L	Value Inches (mm)		%	Joint	Circumferential Location		Rating	Image Ref.	Remarks
					1st	2nd			At/From	To			
217.2 ft.	00:08:42	IRB						<input type="checkbox"/>	9 /		4	ROCK SWALE 72 IN INSPECTION-AMH 'MH6'-AMH 'MH5'-IRB at 217.2 ft.JPG	
254.0 ft.	00:09:24	MGO						<input type="checkbox"/>	/			ROCK SWALE 72 IN INSPECTION-AMH 'MH6'-AMH 'MH5'-MGO at 254.0 ft.JPG	LESS DAE AT 9-3 STILL >5%
311.5 ft.	00:10:32	DB						<input type="checkbox"/>	3 /		3	ROCK SWALE 72 IN INSPECTION-AMH 'MH6'-AMH 'MH5'-DB at 311.5 ft.JPG	
311.6 ft.	00:10:45	FC						<input type="checkbox"/>	3 / 4		2	ROCK SWALE 72 IN INSPECTION-AMH 'MH6'-AMH 'MH5'-FC at 311.6 ft.JPG	
333.9 ft.	00:11:29	IRB						<input type="checkbox"/>	9 /		4	ROCK SWALE 72 IN INSPECTION-AMH 'MH6'-AMH 'MH5'-IRB at 333.9 ft.JPG	
344.9 ft.	00:11:46	IRB						<input type="checkbox"/>	9 /		4	ROCK SWALE 72 IN INSPECTION-AMH 'MH6'-AMH 'MH5'-IRB at 344.9 ft.JPG	
349.2 ft.	00:12:12	DSZ					5	<input type="checkbox"/>	6 /		2	ROCK SWALE 72 IN INSPECTION-AMH 'MH6'-AMH 'MH5'-DSZ at 349.2 ft.JPG	BROKEN MH LID
367.2 ft.	00:12:52	IRB						<input type="checkbox"/>	9 /		4	ROCK SWALE 72 IN INSPECTION-AMH 'MH6'-AMH 'MH5'-IRB at 367.2 ft.JPG	

## Observations

Distance	Video Ref.	PACP Code	Continuous	S/M/L	Value Inches (mm)		%	Joint	Circumferential Location		Rating	Image Ref.	Remarks
					1st	2nd			At/From	To			
374.9 ft.	00:13:08	IRB						<input type="checkbox"/>	9 /	4	ROCK SWALE 72 IN INSPECTION-AMH 'MH6'-AMH 'MH5'-IRB at 374.9 ft.JPG		
375.0 ft.	00:13:49	HVV						<input type="checkbox"/>	5 /	5	ROCK SWALE 72 IN INSPECTION-AMH 'MH6'-AMH 'MH5'-HVV at 375.0 ft.JPG	AROUND CONNECTION 6" DEEP	
375.0 ft.	00:13:26	TBD			6.000			<input type="checkbox"/>	5 /	3	ROCK SWALE 72 IN INSPECTION-AMH 'MH6'-AMH 'MH5'-TBD at 375.0 ft.JPG	UNDER FLOW LINE	
376.2 ft.	00:14:11	SSS						<input type="checkbox"/>	2 / 3	2	ROCK SWALE 72 IN INSPECTION-AMH 'MH6'-AMH 'MH5'-SSS at 376.2 ft.JPG	BRICK DELAMINATING	
400.6 ft.	00:15:00	TB			8.000			<input type="checkbox"/>	1 /		ROCK SWALE 72 IN INSPECTION-AMH 'MH6'-AMH 'MH5'-TB at 400.6 ft.JPG		
415.4 ft.	00:15:31	IRB						<input type="checkbox"/>	8 /	4	ROCK SWALE 72 IN INSPECTION-AMH 'MH6'-AMH 'MH5'-IRB at 415.4 ft.JPG		
421.0 ft.	00:15:44	IRB						<input type="checkbox"/>	9 /	4	ROCK SWALE 72 IN INSPECTION-AMH 'MH6'-AMH 'MH5'-IRB at 421.0 ft.JPG		
431.6 ft.	00:16:01	SSS						<input type="checkbox"/>	4 /	2	ROCK SWALE 72 IN INSPECTION-AMH 'MH6'-AMH 'MH5'-SSS at 431.6 ft.JPG	DELAMINATING BRICK	
431.7 ft.	00:16:17	SSS						<input type="checkbox"/>	12 /	2	ROCK SWALE 72 IN INSPECTION-AMH 'MH6'-AMH 'MH5'-SSS at 431.7 ft.JPG	BRICK DELAMINATING	

## Observations

Distance	Video Ref.	PACP Code	Continuous	S/M/L	Value Inches (mm)		%	Joint	Circumferential Location		Rating	Image Ref.	Remarks
					1st	2nd			At/From	To			
438.4 ft.	00:16:39	IRB						<input type="checkbox"/>	8 /	4	ROCK SWALE 72 IN INSPECTION-AMH 'MH6'-AMH 'MH5'-IRB at 438.4 ft.JPG		
444.8 ft.	00:16:55	IRB						<input type="checkbox"/>	8 /	4	ROCK SWALE 72 IN INSPECTION-AMH 'MH6'-AMH 'MH5'-IRB at 444.8 ft.JPG		
528.8 ft.	00:18:30	IRB						<input type="checkbox"/>	3 /	4	ROCK SWALE 72 IN INSPECTION-AMH 'MH6'-AMH 'MH5'-IRB at 528.8 ft.JPG		
550.6 ft.	00:18:55	IRB						<input type="checkbox"/>	8 /	4	ROCK SWALE 72 IN INSPECTION-AMH 'MH6'-AMH 'MH5'-IRB at 550.6 ft.JPG		
559.6 ft.	00:19:14	IRB						<input type="checkbox"/>	4 /	4	ROCK SWALE 72 IN INSPECTION-AMH 'MH6'-AMH 'MH5'-IRB at 559.6 ft.JPG		
559.6 ft.	00:19:21	MGO						<input type="checkbox"/>	/		ROCK SWALE 72 IN INSPECTION-AMH 'MH6'-AMH 'MH5'-MGO at 559.6 ft.JPG	UNKNOWN WHITE STAINING	
612.1 ft.	00:20:23	MGO						<input type="checkbox"/>	/		ROCK SWALE 72 IN INSPECTION-AMH 'MH6'-AMH 'MH5'-MGO at 612.1 ft.JPG	UNKNOWN WHITE STAINING	
612.1 ft.	00:20:16	IRB						<input type="checkbox"/>	8 /	4	ROCK SWALE 72 IN INSPECTION-AMH 'MH6'-AMH 'MH5'-IRB at 612.1 ft.JPG		

## Observations

Distance	Video Ref.	PACP Code	Continuous	S/M/L	Value Inches (mm)		%	Joint	Circumferential Location		Rating	Image Ref.	Remarks
					1st	2nd			At/From	To			
636.3 ft.	00:20:54	IRB						<input type="checkbox"/>	3 /	4	ROCK SWALE 72 IN INSPECTION-AMH 'MH6'-AMH 'MH5'-IRB at 636.3 ft.JPG	UNKNOWN WHITE STAINING	
647.7 ft.	00:21:21	IRB						<input type="checkbox"/>	3 /	4	ROCK SWALE 72 IN INSPECTION-AMH 'MH6'-AMH 'MH5'-IRB at 647.7 ft.JPG	UNKNOWN WHITE STAINING	
704.7 ft.	00:22:25	IRB						<input type="checkbox"/>	9 /	4	ROCK SWALE 72 IN INSPECTION-AMH 'MH6'-AMH 'MH5'-IRB at 704.7 ft.JPG		
713.0 ft.	00:22:41	IRB						<input type="checkbox"/>	3 /	4	ROCK SWALE 72 IN INSPECTION-AMH 'MH6'-AMH 'MH5'-IRB at 713.0 ft.JPG	UNKNOWN WHITE STAINING	
768.0 ft.	00:23:45	MGO						<input type="checkbox"/>	/		ROCK SWALE 72 IN INSPECTION-AMH 'MH6'-AMH 'MH5'-MGO at 768.0 ft.JPG	DAE LESS THAN 5% 7-5 OCLOCK	
768.0 ft.	00:24:15	MWLS	S02				15	<input type="checkbox"/>	/	2	ROCK SWALE 72 IN INSPECTION-AMH 'MH6'-AMH 'MH5'-MWL at 768.0 ft.JPG		
823.2 ft.	00:25:47	IRB						<input type="checkbox"/>	9 /	4	ROCK SWALE 72 IN INSPECTION-AMH 'MH6'-AMH 'MH5'-IRB at 823.2 ft.JPG		
824.1 ft.	00:25:57	MWLS	F02				15	<input type="checkbox"/>	/	2	ROCK SWALE 72 IN INSPECTION-AMH 'MH6'-AMH 'MH5'-MWLS at 824.1 ft.JPG		

## Observations

Distance	Video Ref.	PACP Code	Continuous	S/M/L	Value Inches (mm)		%	Joint	Circumferential Location		Rating	Image Ref.	Remarks
					1st	2nd			At/From	To			
826.1 ft.	00:26:11	MWL					5	<input type="checkbox"/>	/			ROCK SWALE 72 IN INSPECTION-AMH 'MH6'-AMH 'MH5'-MWL at 826.1 ft.JPG	
837.6 ft.	00:26:34	RFB						<input type="checkbox"/>	10 /		2	ROCK SWALE 72 IN INSPECTION-AMH 'MH6'-AMH 'MH5'-RFB at 837.6 ft.JPG	
837.6 ft.	00:26:49	SSS						<input type="checkbox"/>	10 /		2	ROCK SWALE 72 IN INSPECTION-AMH 'MH6'-AMH 'MH5'-SSS at 837.6 ft.JPG	BRICK DELAMINATING
875.4 ft.	00:27:29	IRB						<input type="checkbox"/>	3 /		4	ROCK SWALE 72 IN INSPECTION-AMH 'MH6'-AMH 'MH5'-IRB at 875.4 ft.JPG	
891.9 ft.	00:27:50	RFB						<input type="checkbox"/>	2 / 3		2	ROCK SWALE 72 IN INSPECTION-AMH 'MH6'-AMH 'MH5'-RFB at 891.9 ft.JPG	
891.9 ft.	00:28:00	SSS						<input type="checkbox"/>	2 / 3		2	ROCK SWALE 72 IN INSPECTION-AMH 'MH6'-AMH 'MH5'-SSS at 891.9 ft.JPG	BRICK DELAMINATING
921.0 ft.	00:28:38	IRB						<input type="checkbox"/>	8 /		4	ROCK SWALE 72 IN INSPECTION-AMH 'MH6'-AMH 'MH5'-IRB at 921.0 ft.JPG	
958.9 ft.	00:29:15	SSS						<input type="checkbox"/>	9 /		2	ROCK SWALE 72 IN INSPECTION-AMH 'MH6'-AMH 'MH5'-SSS at 958.9 ft.JPG	BRICKS DELAMINATING



## Observations

Distance	Video Ref.	PACP Code	Continuous	S/M/L	Value Inches (mm)		%	Joint	Circumferential Location		Rating	Image Ref.	Remarks
					1st	2nd			At/From	To			
971.6 ft.	00:29:38	IRB						<input type="checkbox"/>	8 /		4	ROCK SWALE 72 IN INSPECTION-AMH 'MH6'-AMH 'MH5'-IRB at 971.6 ft.JPG	
971.8 ft.	00:29:44	SSS						<input type="checkbox"/>	8 /		2	ROCK SWALE 72 IN INSPECTION-AMH 'MH6'-AMH 'MH5'-SSS at 971.8 ft.JPG	BRICKS DELAMINATING
984.7 ft.	00:30:07	IG						<input type="checkbox"/>	4 /		5	ROCK SWALE 72 IN INSPECTION-AMH 'MH6'-AMH 'MH5'-IG at 984.7 ft.JPG	
986.7 ft.	00:30:54	MB						<input type="checkbox"/>	2 / 3		4	ROCK SWALE 72 IN INSPECTION-AMH 'MH6'-AMH 'MH5'-MB at 986.7 ft.JPG	HALF OF A COURSE OF BRICK MISSING
986.7 ft.	00:30:28	SSS						<input type="checkbox"/>	4 /		2	ROCK SWALE 72 IN INSPECTION-AMH 'MH6'-AMH 'MH5'-SSS at 986.7 ft.JPG	BRICK DELAMINATING POTENTIAL INFILTRATION
994.6 ft.	00:31:28	MMM	F01	M				<input type="checkbox"/>	5 / 7		3	ROCK SWALE 72 IN INSPECTION-AMH 'MH6'-AMH 'MH5'-MMM at 994.6 ft.JPG	
995.0 ft.	00:31:57	AMH						<input type="checkbox"/>	/			ROCK SWALE 72 IN INSPECTION-AMH 'MH6'-AMH 'MH5'-AMH at 995.0 ft.JPG	MH5

Mainline length: 995.000 ft.  
Surveyed length: 995.000 ft.

Omitted: 959.9 ft.

Started at 0.0 ft. with flow  
on 6/26/2024 2:07:47 PM

### AMH 'MH6'



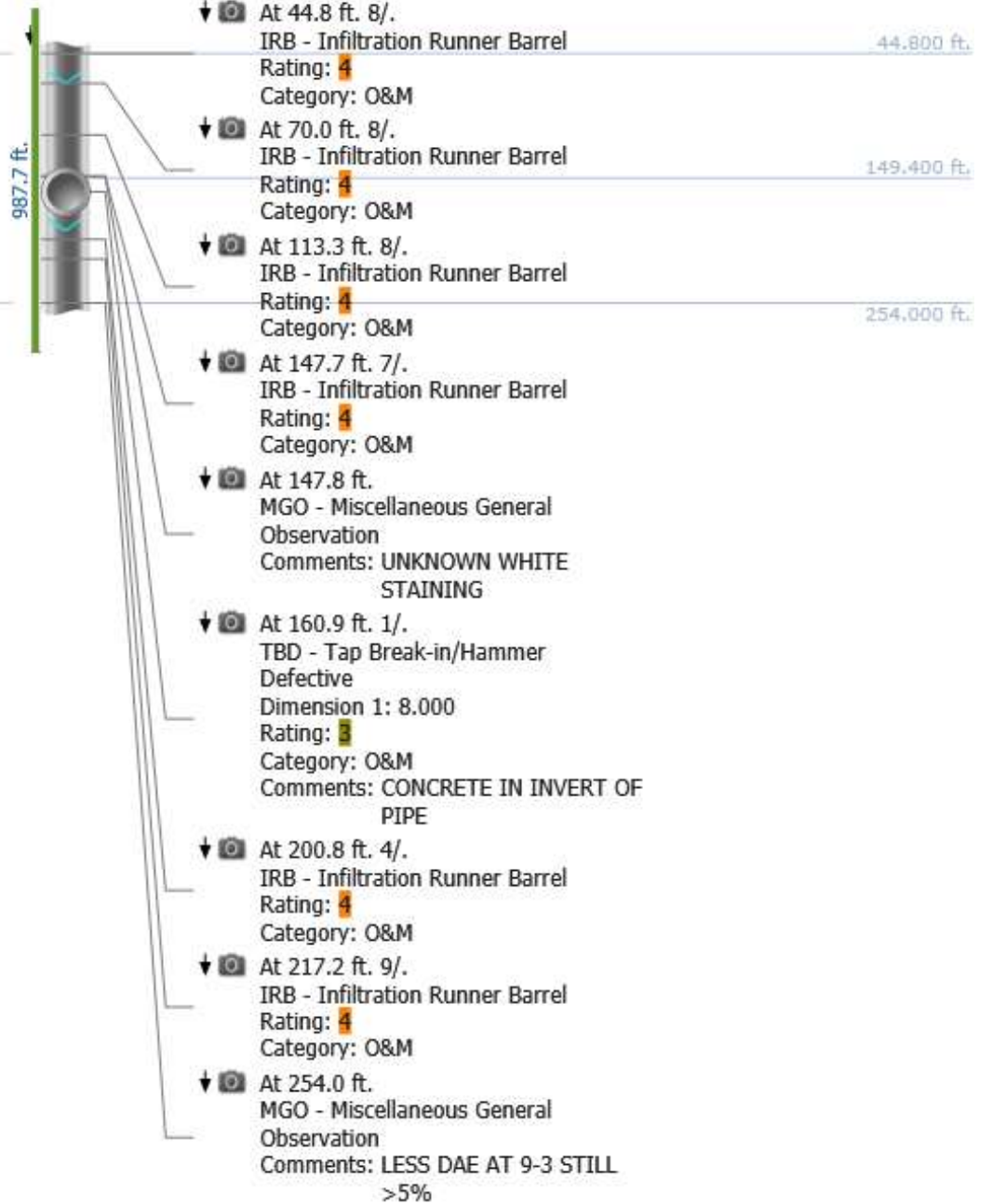
At 6.9 ft. 5/7  
S01: MMM - Missing Mortar  
Medium  
Rating: 3  
Category: Structural

987.7 ft.

- At 0.0 ft.  
AMH - Manhole  
Comments: MH6
- At 0.0 ft.  
MWL - Miscellaneous Water Level
- At 5.0 ft. 9/  
DB - Displaced Brick  
Rating: 3  
Category: Structural
- At 5.0 ft. 9/  
SSS - Surface Damage Surface Spalling  
Rating: 2  
Category: Structural  
Comments: CHIPPED SURFACE
- At 7.4 ft.  
MGO - Miscellaneous General Observation  
Comments: DAE LESS THAN 5% 9-3 VARYING IN POSITION CONTINUOUS
- At 25.3 ft. 10/  
TBD - Tap Break-in/Hammer Defective  
Dimension 1: 12.000  
Rating: 3  
Category: O&M  
Comments: BLOCKED 10-2 BRICK
- At 29.0 ft. 8/  
IRB - Infiltration Runner Barrel  
Rating: 4  
Category: O&M
- At 35.1 ft. 8/  
IRB - Infiltration Runner Barrel  
Rating: 4  
Category: O&M

0.000 ft.  
35.100 ft.

Mainline length: 995,000 ft.  
 Surveyed length: 995,000 ft.  
 Omitted: 44.8 ft.  
 Omitted: 741 ft.



Mainline length: 995,000 ft.  
Surveyed length: 995,000 ft.

Omitted: 311.5 ft.

Omitted: 618.8 ft.

At 375.0 ft. 5/.  
TBD - Tap Break-in/Hammer  
Defective  
Dimension 1: 6.000  
Rating: 3  
Category: O&M  
Comments: UNDER FLOW LINE



- ↓ At 311.5 ft. 3/.  
DB - Displaced Brick  
Rating: 3  
Category: Structural  
311,500 ft.
- ↓ At 311.6 ft. 3/4  
FC - Fracture Circumferential  
Rating: 2  
Category: Structural  
376,200 ft.
- ↓ At 333.9 ft. 9/.  
IRB - Infiltration Runner Barrel  
Rating: 4  
Category: O&M
- ↓ At 344.9 ft. 9/.  
IRB - Infiltration Runner Barrel  
Rating: 4  
Category: O&M
- ↓ At 349.2 ft. 6/.  
DSZ - Deposits Settled Other  
Rating: 2  
Category: O&M  
Comments: BROKEN MH LID
- ↓ At 367.2 ft. 9/.  
IRB - Infiltration Runner Barrel  
Rating: 4  
Category: O&M
- ↓ At 374.9 ft. 9/.  
IRB - Infiltration Runner Barrel  
Rating: 4  
Category: O&M
- ↓ At 375.0 ft. 5/.  
HVV - Hole Void Visible  
Rating: 1  
Category: Structural  
Comments: AROUND CONNECTION 6"  
DEEP
- ↓ At 376.2 ft. 2/3  
SSS - Surface Damage Surface  
Spalling  
Rating: 2  
Category: Structural  
Comments: BRICK DELAMINATING

Mainline length: 995,000 ft.  
Surveyed length: 995,000 ft.

Omitted: 400.6 ft.

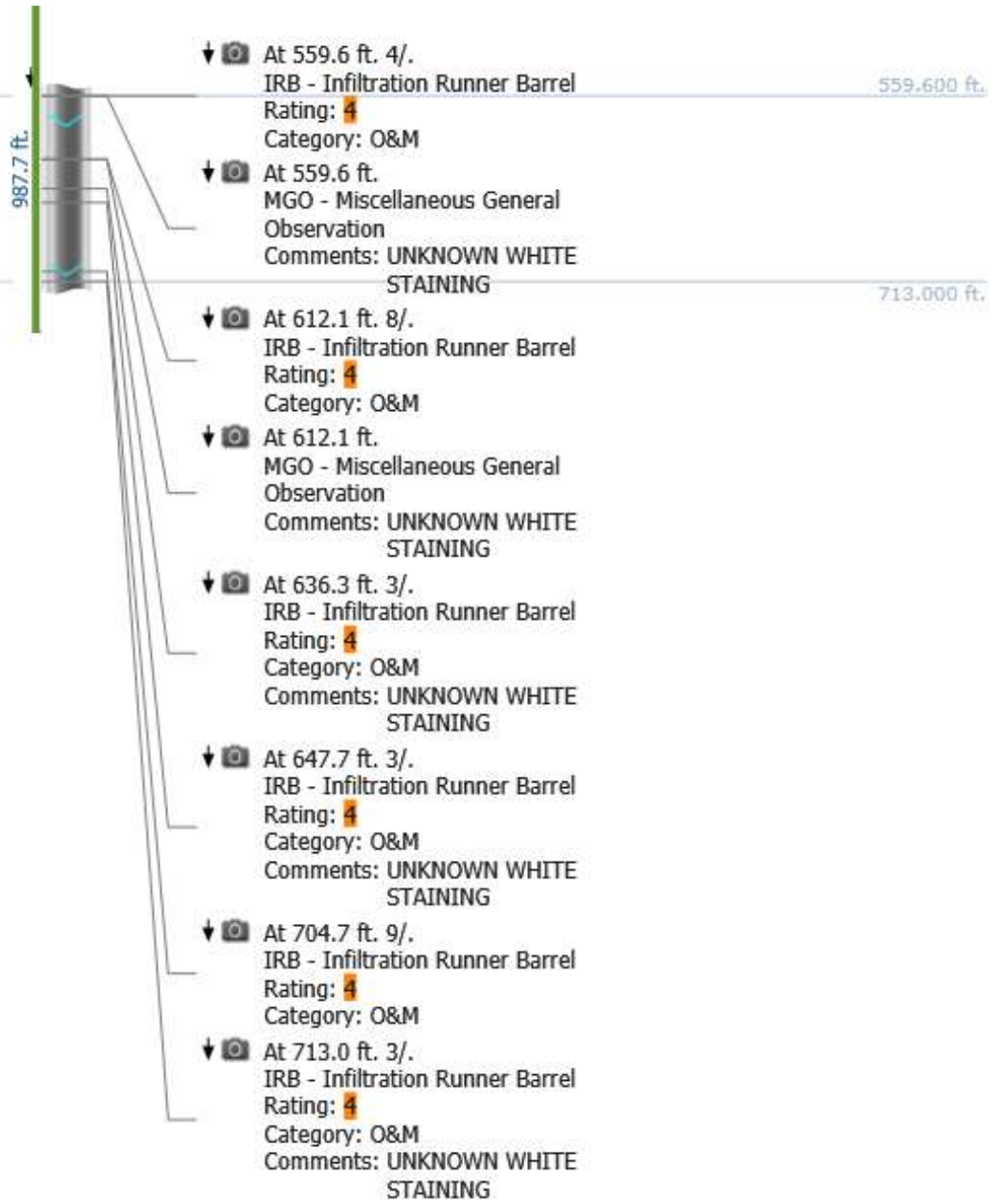
Omitted: 444.4 ft.

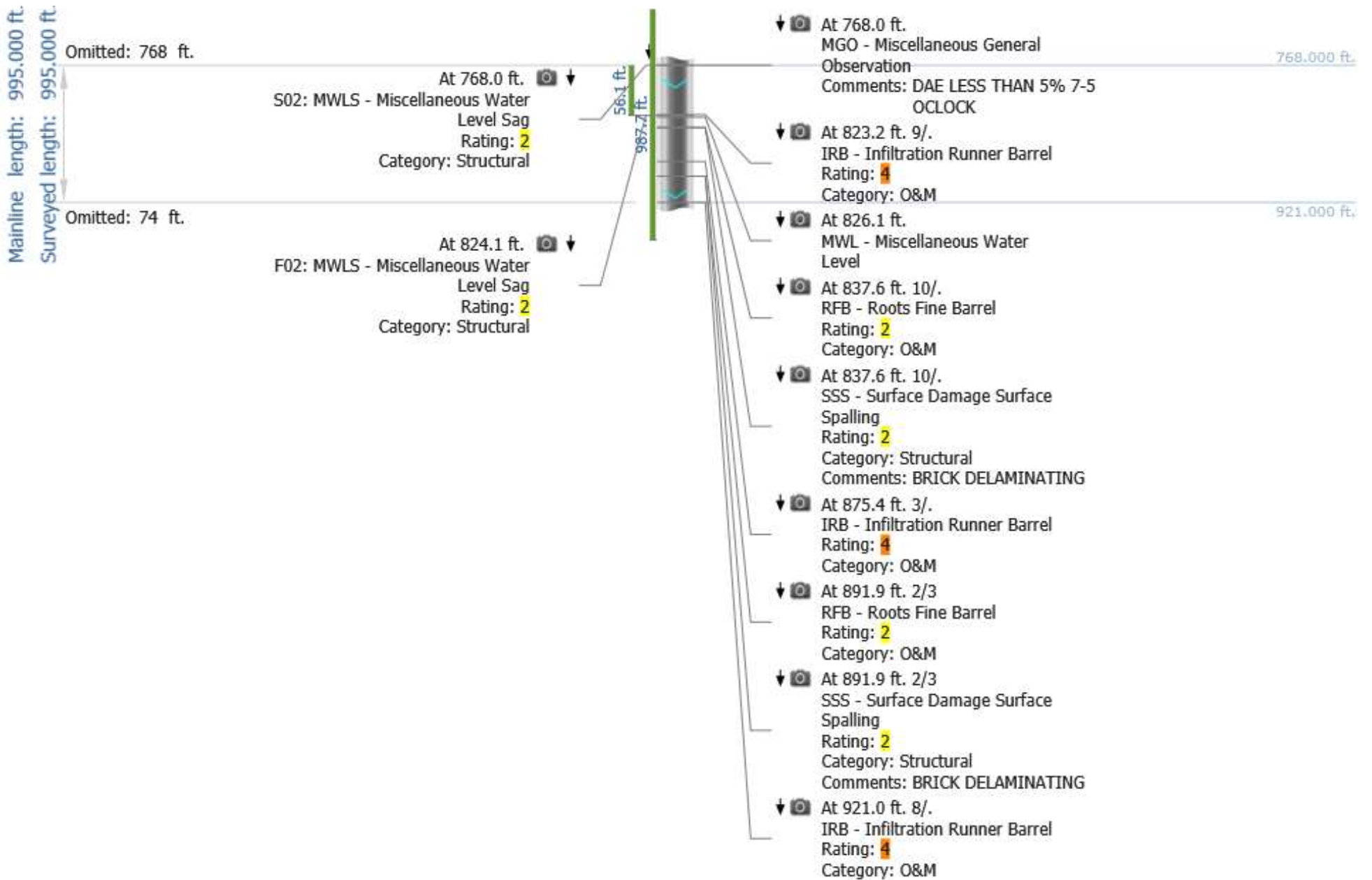
987.7 ft.



- ↓ At 400.6 ft. 1/.  
TB - Tap Break-in/Hammer  
Dimension 1: 8.000 400.600 ft.
- ↓ At 415.4 ft. 8/.  
IRB - Infiltration Runner Barrel  
Rating: 4  
Category: O&M
- ↓ At 421.0 ft. 9/. 550.600 ft.  
IRB - Infiltration Runner Barrel  
Rating: 4  
Category: O&M
- ↓ At 431.6 ft. 4/.  
SSS - Surface Damage Surface  
Spalling  
Rating: 2  
Category: Structural  
Comments: DELAMINATING BRICK
- ↓ At 431.7 ft. 12/.  
SSS - Surface Damage Surface  
Spalling  
Rating: 2  
Category: Structural  
Comments: BRICK DELAMINATING
- ↓ At 438.4 ft. 8/.  
IRB - Infiltration Runner Barrel  
Rating: 4  
Category: O&M
- ↓ At 444.8 ft. 8/.  
IRB - Infiltration Runner Barrel  
Rating: 4  
Category: O&M
- ↓ At 528.8 ft. 3/.  
IRB - Infiltration Runner Barrel  
Rating: 4  
Category: O&M
- ↓ At 550.6 ft. 8/.  
IRB - Infiltration Runner Barrel  
Rating: 4  
Category: O&M

Mainline length: 995,000 ft.  
 Surveyed length: 995,000 ft.  
 Omitted: 559.6 ft.  
 Omitted: 282 ft.





Mainline length: 995.000 ft.  
Surveyed length: 995.000 ft.

Omitted: 958.9 ft.

At 994.6 ft. 5/7  
F01: MMM - Missing Mortar Medium  
Rating: 3  
Category: Structural  
Stopped at 995.0 ft. with flow  
on 6/26/2024 2:40:25 PM

987.7 ft.  
AMH 'MH5'

- At 958.9 ft. 9/  
SSS - Surface Damage Surface  
Spalling  
Rating: 2  
Category: Structural  
Comments: BRICKS DELAMINATING  
958.900 ft.
- At 971.6 ft. 8/  
IRB - Infiltration Runner Barrel  
Rating: 4  
Category: O&M
- At 971.8 ft. 8/  
SSS - Surface Damage Surface  
Spalling  
Rating: 2  
Category: Structural  
Comments: BRICKS DELAMINATING
- At 984.7 ft. 4/  
IG - Infiltration Gusher  
Rating: 1  
Category: O&M
- At 986.7 ft. 4/  
SSS - Surface Damage Surface  
Spalling  
Rating: 2  
Category: Structural  
Comments: BRICK DELAMINATING  
POTENTIAL  
INFILTRATION
- At 986.7 ft. 2/3  
MB - Missing Brick  
Rating: 4  
Category: Structural  
Comments: HALF OF A COURSE OF  
BRICK MISSING
- At 995.0 ft.  
AMH - Manhole  
Comments: MH5



# Photos



Distance: 0.0 ft.  
AMH - Manhole  
Clock from:  
Clock to:  
Rating:  
Dimension 1:  
Dimension 2:  
%:  
MH6

76%

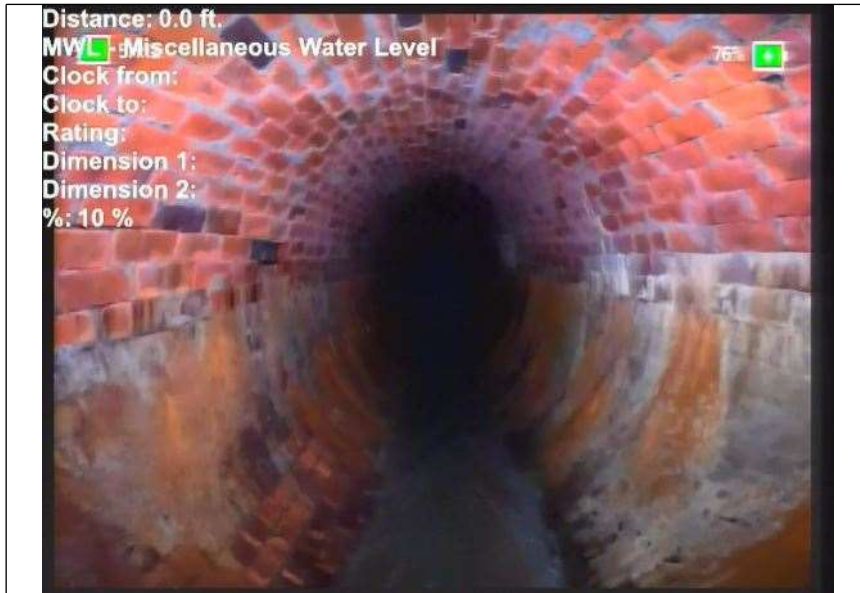
At: 0 ft. AMH - Manhole  
Joint: No MH6



Start date/time: 8/26/2024 2:07 PM  
Pipe segment ref.: Sewer Main 'MH6 - MH5'  
Project name: ROCK SWALE 72 IN INSPECTION  
Surveyed by: ANDREW  
City: MARION, OH  
Street: 1045 HOLLAND RD.  
Upstream MH No: AMH 'MH5'  
Downstream MH No: AMH 'MH6'  
Direction: D  
Location code: G  
Height: 72 in.  
Width:  
Shape: C  
Material: BK  
Weather: 1

75%

At: 0 ft. AMH - Manhole  
Joint: No MH6



Distance: 0.0 ft.  
MWL - Miscellaneous Water Level  
Clock from:  
Clock to:  
Rating:  
Dimension 1:  
Dimension 2:  
%: 10 %

76%

At: 0 ft. MWL - Miscellaneous Water Level  
Joint: No 10 %



Distance: 5.0 ft.  
DB - Displaced Brick  
Clock from: 9 o'clock  
Clock to:  
Rating: 3  
Dimension 1:  
Dimension 2:  
%:

76%

At: 5 ft. 9/. DB - Displaced Brick  
Joint: No

## Photos

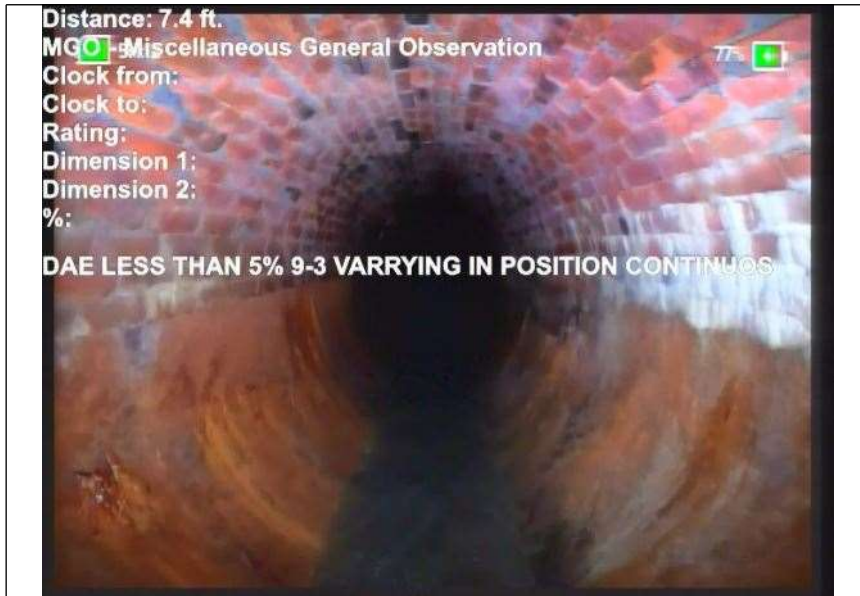


At: 5 ft. 9/ SSS - Surface Damage Surface Spalling  
Joint: No CHIPPED SURFACE



At: 6. MMM - Missing Mortar Medium  
9000000953  
6743 ft. 5/7  
Joint: No

## Photos



At: 7. MGO - Miscellaneous General Observation  
4000000953  
6743 ft.

Joint: No DAE LESS THAN 5% 9-3 VARYING IN POSITION CONTINUOUS



At: 25. TBD - Tap Break-in/Hammer Defective  
2999992370  
605 ft. 10/.

Joint: No BLOCKED 10-2 BRICK



At: 29 ft. 8/. IRB - Infiltration Runner Barrel

Joint: No

## Photos



At: 35. IRB - Infiltration Runner Barrel  
0999984741  
211 ft. 8/.

Joint: No



At: 44. IRB - Infiltration Runner Barrel  
7999992370  
605 ft. 8/.

Joint: No



At: 70 ft. 8/. IRB - Infiltration Runner Barrel

Joint: No

## Photos



At: 113. IRB - Infiltration Runner Barrel  
3000030517  
58 ft. 8/.

Joint: No



At: 147. IRB - Infiltration Runner Barrel  
6999969482  
42 ft. 7/.

Joint: No

## Photos



At: 147. MGO - Miscellaneous General Observation  
8000030517  
58 ft.

Joint: No UNKNOWN WHITE STAINING



At: 160. TBD - Tap Break-in/Hammer Defective  
8999938964  
84 ft. 1/.

Joint: No CONCRETE IN INVERT OF PIPE

## Photos



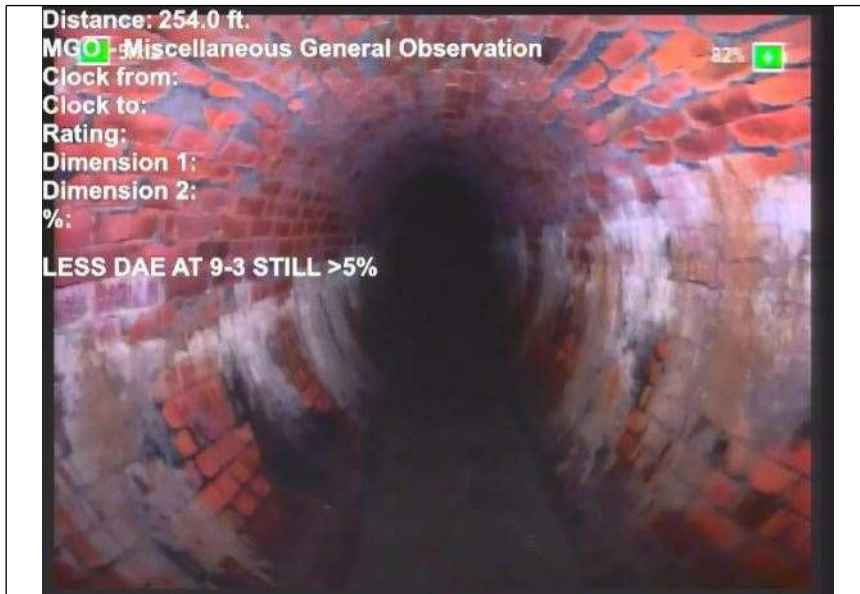
At: 200. IRB - Infiltration Runner Barrel  
8000030517  
58 ft. 4/.

Joint: No



At: 217. IRB - Infiltration Runner Barrel  
1999969482  
42 ft. 9/.

Joint: No



At: 254 ft. MGO - Miscellaneous General Observation  
Joint: No LESS DAE AT 9-3 STILL >5%



At: 311.5 ft. 3/. DB - Displaced Brick  
Joint: No

## Photos



At: 311. FC - Fracture Circumferential  
6000061035  
16 ft. 3/4  
Joint: No



At: 333. IRB - Infiltration Runner Barrel  
8999938964  
84 ft. 9/  
Joint: No



## Photos



At: 344. IRB - Infiltration Runner Barrel  
8999938964  
84 ft. 9/.

Joint: No



At: 349. DSZ - Deposits Settled Other  
2000122070  
31 ft. 6/.

Joint: No 5 % BROKEN MH LID

## Photos



At: 367. IRB - Infiltration Runner Barrel  
2000122070  
31 ft. 9/.

Joint: No



At: 374. IRB - Infiltration Runner Barrel  
8999938964  
84 ft. 9/.

Joint: No



At: 375 ft. 5/. HVV - Hole Void Visible  
Joint: No AROUND CONNECTION 6" DEEP



At: 375 ft. 5/. TBD - Tap Break-in/Hammer Defective  
Joint: No UNDER FLOW LINE

## Photos



At: 376. SSS - Surface Damage Surface Spalling  
2000122070  
31 ft. 2/3

Joint: No BRICK DELAMINATING



At: 400. TB - Tap Break-in/Hammer  
6000061035  
16 ft. 1/.

Joint: No

## Photos



At: 415. IRB - Infiltration Runner Barrel  
3999938964  
84 ft. 8/.

Joint: No



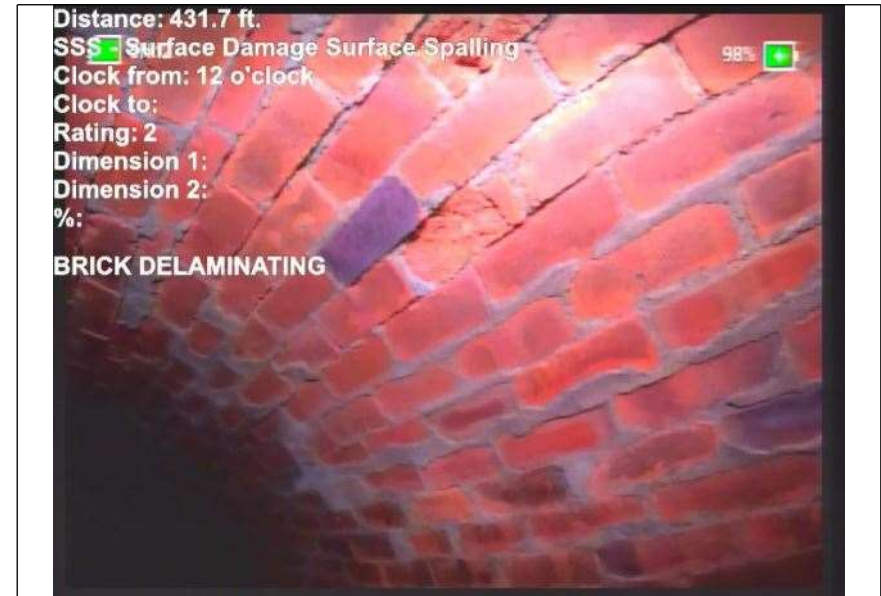
At: 421 ft. 9/. IRB - Infiltration Runner Barrel  
Joint: No

## Photos



At: 431. SSS - Surface Damage Surface Spalling  
6000061035  
16 ft. 4/.

Joint: No DELAMINATING BRICK



At: 431. SSS - Surface Damage Surface Spalling  
7000122070  
31 ft. 12/.

Joint: No BRICK DELAMINATING

## Photos



At: 438. IRB - Infiltration Runner Barrel  
3999938964  
84 ft. 8/.

Joint: No



At: 444. IRB - Infiltration Runner Barrel  
7999877929  
69 ft. 8/.

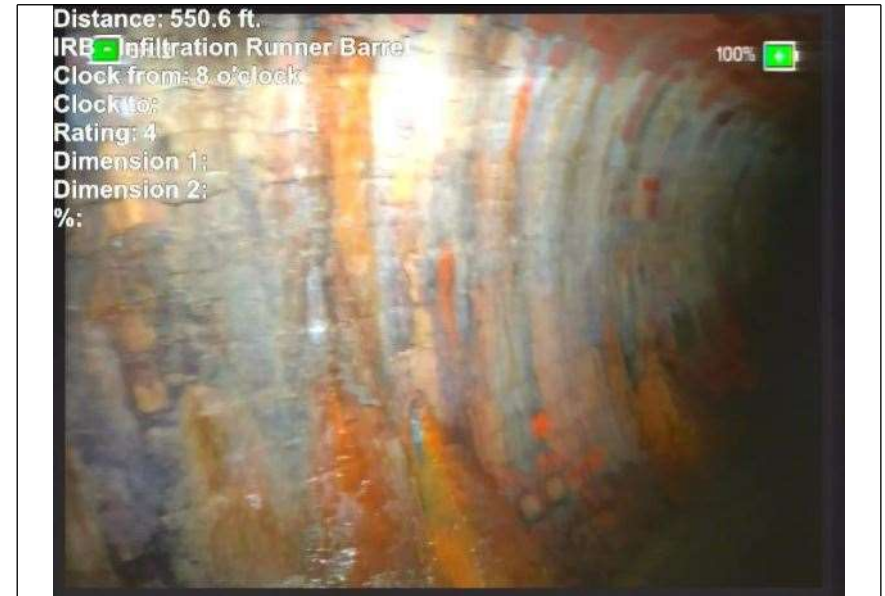
Joint: No

## Photos



At: 528. IRB - Infiltration Runner Barrel  
7999877929  
69 ft. 3/.

Joint: No



At: 550. IRB - Infiltration Runner Barrel  
5999755859  
38 ft. 8/.

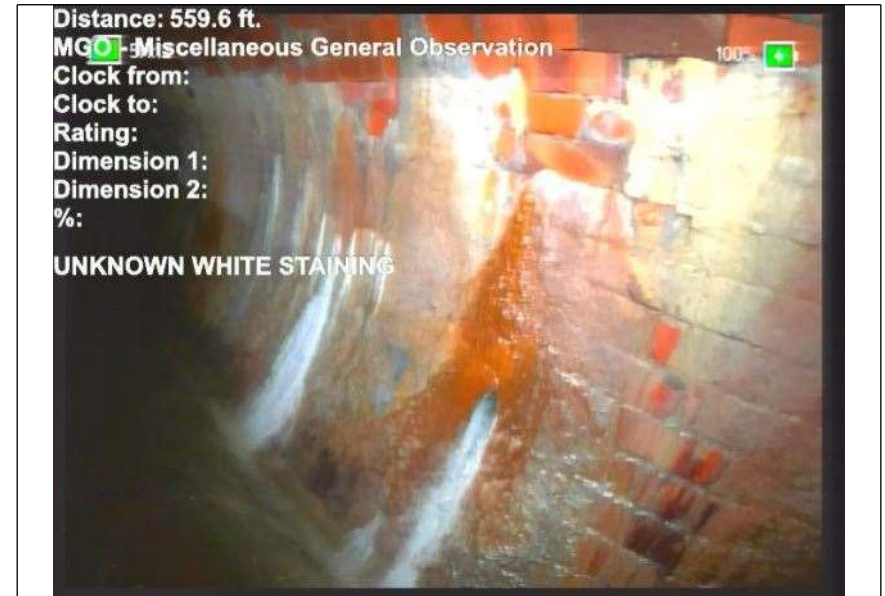
Joint: No

## Photos



At: 559. IRB - Infiltration Runner Barrel  
5999755859  
38 ft. 4/.

Joint: No



At: 559. MGO - Miscellaneous General Observation  
5999755859  
38 ft.

Joint: No **UNKNOWN WHITE STAINING**



## Photos



At: 612.0999755859 MGO - Miscellaneous General Observation  
38 ft.

Joint: No UNKNOWN WHITE STAINING



At: 612.0999755859 IRB - Infiltration Runner Barrel  
38 ft. 8/.

Joint: No

## Photos



At: 636. IRB - Infiltration Runner Barrel  
2999877929  
69 ft. 3/.

Joint: No UNKNOWN WHITE STAINING



At: 647. IRB - Infiltration Runner Barrel  
7000122070  
31 ft. 3/.

Joint: No UNKNOWN WHITE STAINING

## Photos

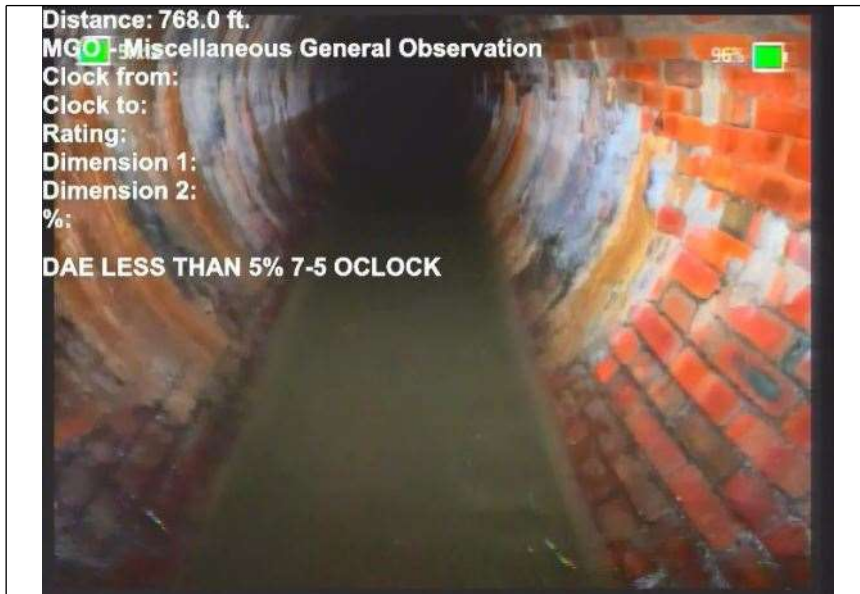


At: 704. IRB - Infiltration Runner Barrel  
7000122070  
31 ft. 9/.

Joint: No



At: 713 ft. 3/. IRB - Infiltration Runner Barrel  
Joint: No UNKNOWN WHITE STAINING

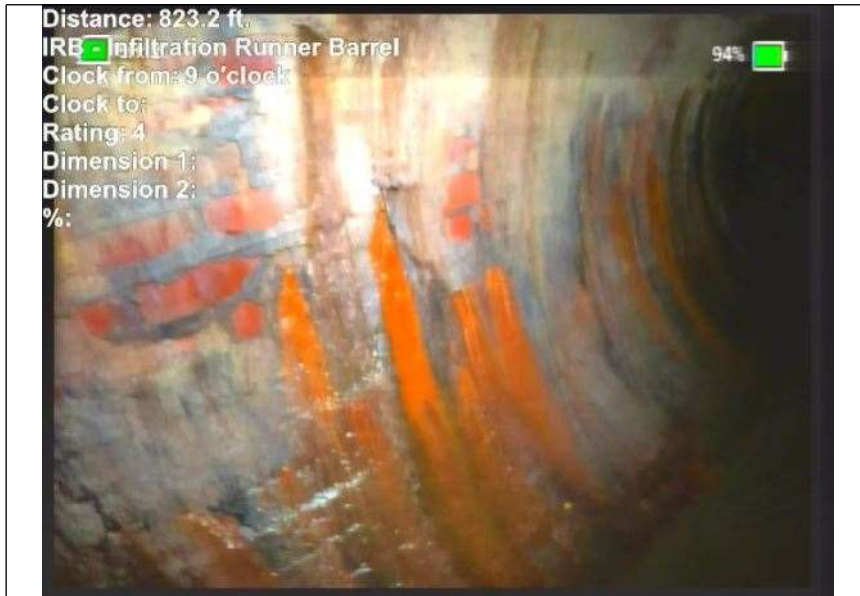


At: 768 ft. MGO - Miscellaneous General Observation  
Joint: No DAE LESS THAN 5% 7-5 OCLOCK



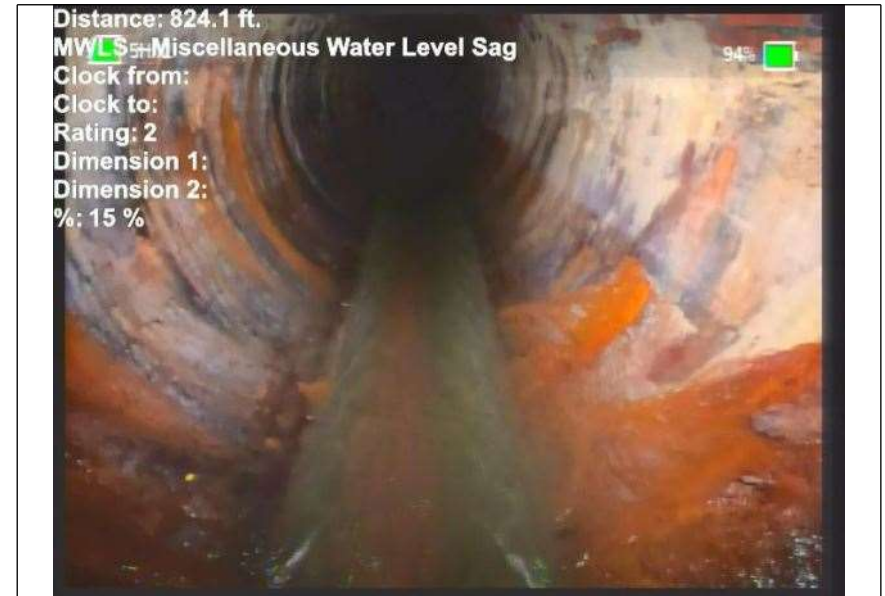
At: 768 ft. MWLS - Miscellaneous Water Level Sag  
Joint: No 15 %

## Photos



At: 823. IRB - Infiltration Runner Barrel  
2000122070  
31 ft. 9/.

Joint: No



At: 824. MWLS - Miscellaneous Water Level Sag  
0999755859  
38 ft.

Joint: No 15 %

## Photos



At: 826. MWL - Miscellaneous Water Level  
0999755859  
38 ft.

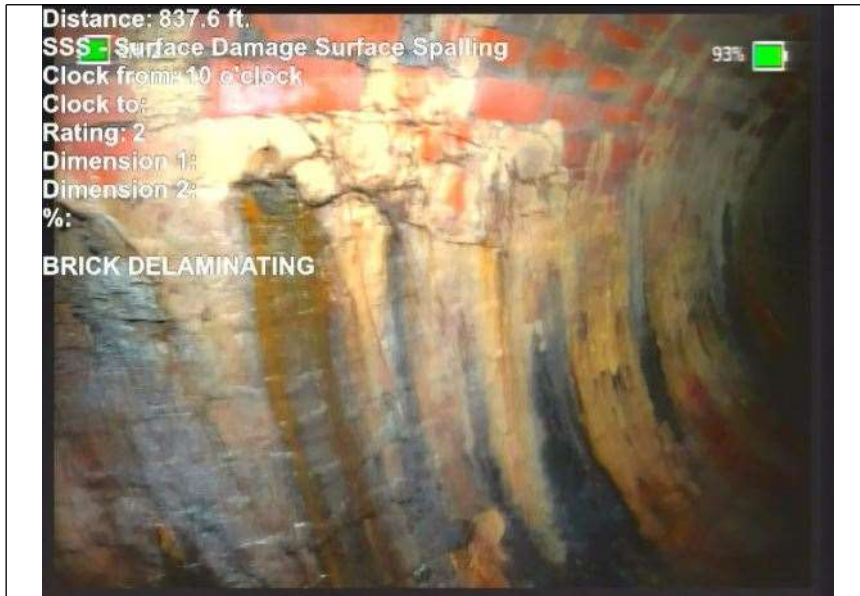
Joint: No 5 %



At: 837. RFB - Roots Fine Barrel  
5999755859  
38 ft. 10/.

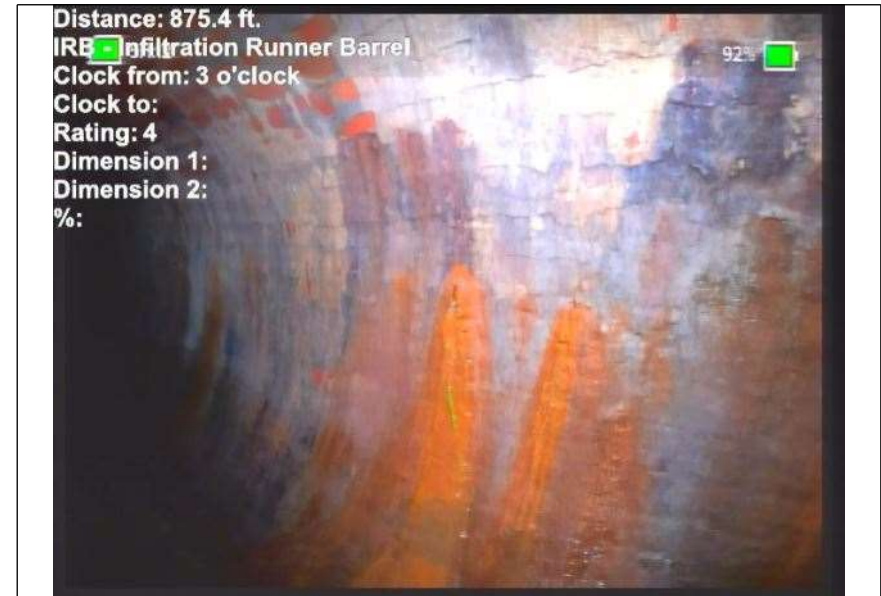
Joint: No

## Photos



At: 837. 5999755859 SSS - Surface Damage Surface Spalling  
38 ft. 10/.

Joint: No BRICK DELAMINATING



At: 875. 4000244140 IRB - Infiltration Runner Barrel  
63 ft. 3/.

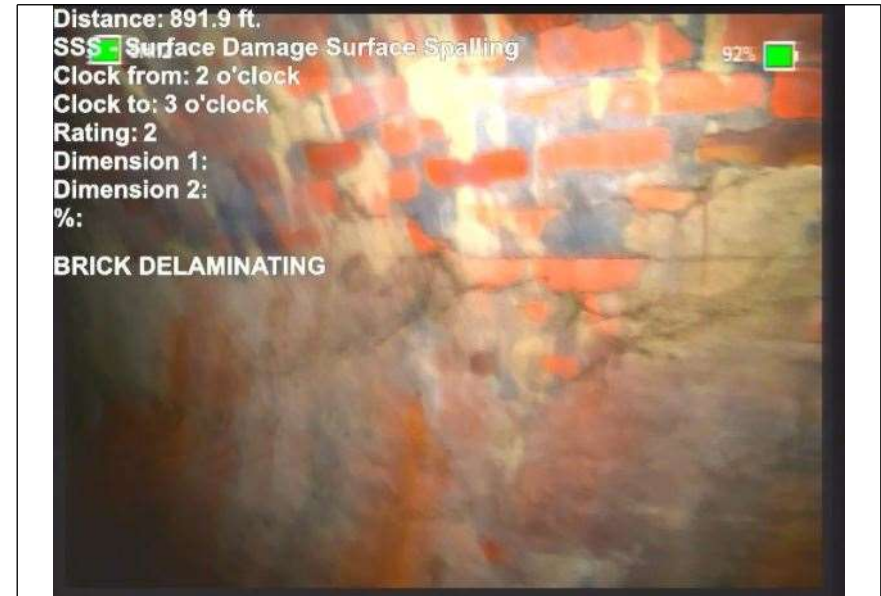
Joint: No

## Photos



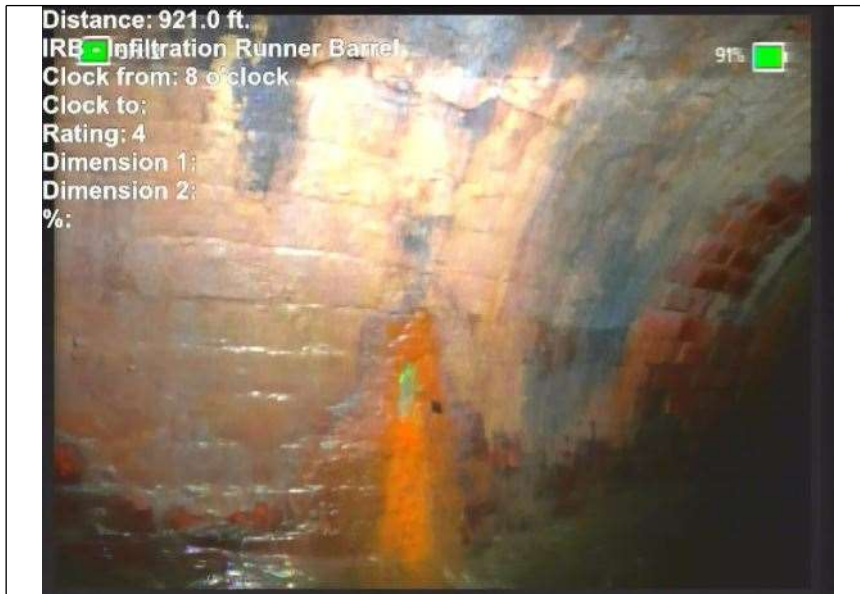
At: 891. RFB - Roots Fine Barrel  
9000244140  
63 ft. 2/3

Joint: No



At: 891. SSS - Surface Damage Surface Spalling  
9000244140  
63 ft. 2/3

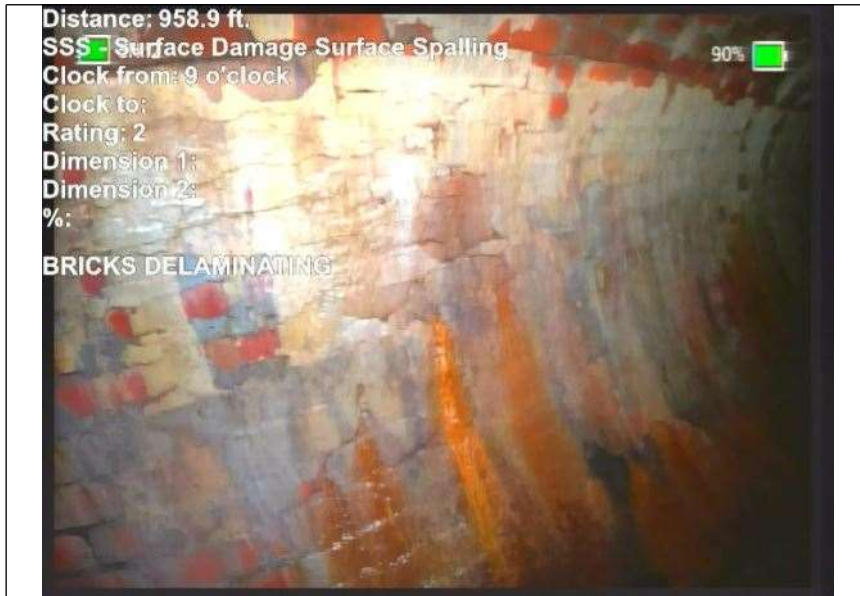
Joint: No BRICK DELAMINATING



At: 921 ft. 8/. IRB - Infiltration Runner Barrel

Joint: No

## Photos



At: 958. SSS - Surface Damage Surface Spalling  
9000244140  
63 ft. 9/.

Joint: No BRICKS DELAMINATING



At: 971. IRB - Infiltration Runner Barrel  
5999755859  
38 ft. 8/.

Joint: No



## Photos



At: 971. SSS - Surface Damage Surface Spalling  
7999877929  
69 ft. 8/.

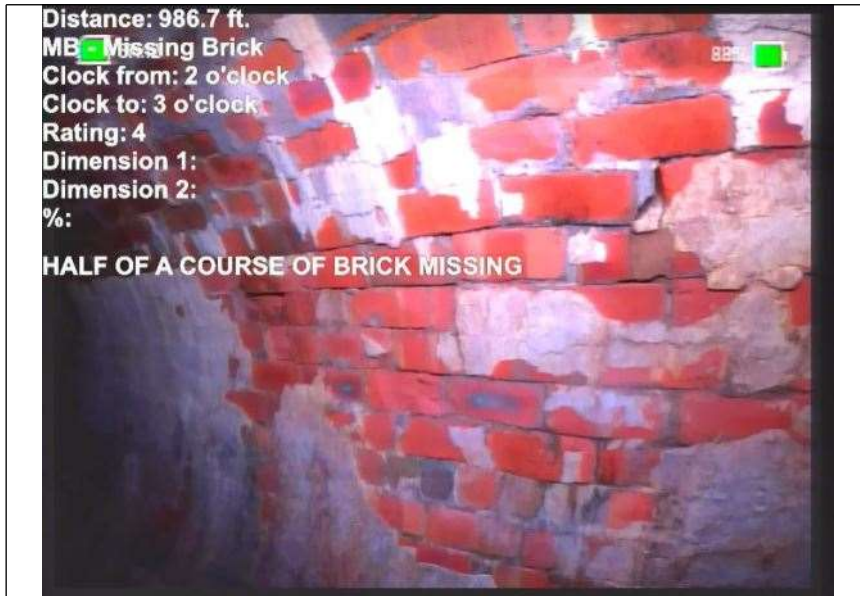
Joint: No BRICKS DELAMINATING



At: 984. IG - Infiltration Gusher  
7000122070  
31 ft. 4/.

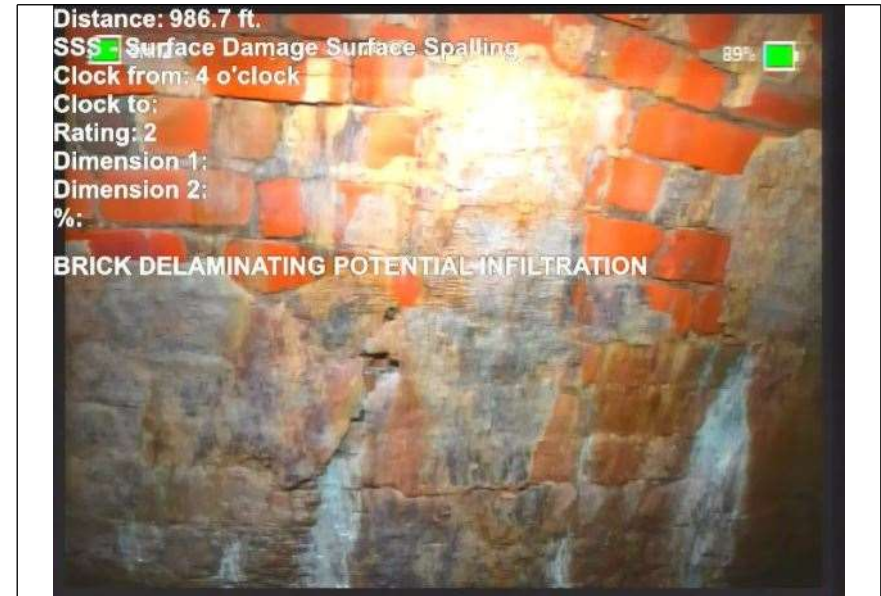
Joint: No

## Photos



At: 986. MB - Missing Brick  
7000122070  
31 ft. 2/3

Joint: No HALF OF A COURSE OF BRICK MISSING



At: 986. SSS - Surface Damage Surface Spalling  
7000122070  
31 ft. 4/.

Joint: No BRICK DELAMINATING POTENTIAL INFILTRATION

## Photos



At: 994. 5999755859  
MMM - Missing Mortar Medium  
38 ft. 5/7

Joint: No



At: 995 ft. AMH - Manhole  
Joint: No MH5