

PACP Report with Pipe Run and Incident Snapshots

Surveyed by: ANDREW		Certificate number: T-507-4975		Owner: CITY OF MARION		Customer:		Drainage area:		P/O number:		Sheet number:							
Pipe segment ref.: MH4A_MH4				Start date/time: 20240627 09:18		Street: 1432 HOLLAND ROAD				City: MARION, M OH									
Location details:				Upstream MH No: MH4A				Rim to invert:		Grade to invert:		Rim to grade:							
Pipe use: CB		Direction: U		Flow control:		Downstream MH No: MH4				Rim to invert:		Grade to invert:		Rim to grade:					
Height: 72 in.		Width:		Shape: C		Material: BR		Lining method:		Pipe joint length:		Total length: 1,190.200 ft.		Length surveyed: 1,190.200 ft.		Purpose: B		Sewer category:	
Media label:				Pre-cleaning: N		Date cleaned:		Weather: 1		Location code: C		Pressure value:							
Project name: ROCK SWALE 72 IN INSPECTION				Additional info:															

Grade	Structural:					O&M:					Overall:	
	Amount of Defects	Segment Grade	Pipe Rating	Quick Rating	Pipe Rating Index	Amount of Defects	Segment Grade	Pipe Rating	Quick Rating	Pipe Rating Index	Pipe Rating	Pipe Rating Index
1	1	1	498	4433	2.0	1	1	106	5147	2.7	604	2.1
2	236	472				18	36					
3	3	9				12	36					
4	4	16				7	28					
5	0	0				1	5					

Observations

Distance	Video Ref.	PACP Code	Continuous	S/M/L	Value Inches (mm)		%	Joint	Circumferential Location		Rating	Image Ref.	Remarks
					1st	2nd			At/From	To			
0.0 ft.	00:00:06	AMH						<input type="checkbox"/>	/			ROCK SWALE 72 IN INSPECTION-AMH 'MH5'-AMH 'MH4'-AMH at 0.0 ft.JPG	MH4
0.0 ft.	00:00:30	MWL					10	<input type="checkbox"/>	/			ROCK SWALE 72 IN INSPECTION-AMH 'MH5'-AMH 'MH4'-MWL at 0.0 ft.JPG	
0.7 ft.	00:01:36	RFC						<input type="checkbox"/>	10 /		1	ROCK SWALE 72 IN INSPECTION-AMH 'MH5'-AMH 'MH4'-RFC at 0.7 ft.JPG	
3.0 ft.	00:01:16	TBI			8.000	2.000		<input type="checkbox"/>	10 /		2	ROCK SWALE 72 IN INSPECTION-AMH 'MH5'-AMH 'MH4'-TBI at 3.0 ft.JPG	
12.8 ft.	00:02:54	MMS	S01	S				<input type="checkbox"/>	5 / 7		2	ROCK SWALE 72 IN INSPECTION-AMH 'MH5'-AMH 'MH4'-MMS at 12.8 ft.JPG	
50.8 ft.	00:03:32	MGO						<input type="checkbox"/>	/			ROCK SWALE 72 IN INSPECTION-AMH 'MH5'-AMH 'MH4'-MGO at 50.8 ft.JPG	DAE LESS THAN 5% 2-10 OCLOCK
66.5 ft.	00:04:20	OBI					5	<input type="checkbox"/>	9 /		5	ROCK SWALE 72 IN INSPECTION-AMH 'MH5'-AMH 'MH4'-OBI at 66.5 ft.JPG	STAKE OR NAIL
131.1 ft.	00:05:37	RFB						<input type="checkbox"/>	2 /		2	ROCK SWALE 72 IN INSPECTION-AMH 'MH5'-AMH 'MH4'-RFB at 131.1 ft.JPG	

Observations

Distance	Video Ref.	PACP Code	Continuous	S/M/L	Value Inches (mm)		%	Joint	Circumferential Location		Rating	Image Ref.	Remarks
					1st	2nd			At/From	To			
145.0 ft.	00:05:56	RTB					5	<input type="checkbox"/>	3 / 5		3	ROCK SWALE 72 IN INSPECTION-AMH 'MH5'-AMH 'MH4'-RTB at 145.0 ft.JPG	
149.1 ft.	00:06:29	RFB						<input type="checkbox"/>	7 / 9		2	ROCK SWALE 72 IN INSPECTION-AMH 'MH5'-AMH 'MH4'-RFB at 149.1 ft.JPG	
149.4 ft.	00:06:39	RFB						<input type="checkbox"/>	3 /		2	ROCK SWALE 72 IN INSPECTION-AMH 'MH5'-AMH 'MH4'-RFB at 149.4 ft.JPG	
157.3 ft.	00:06:59	RTB					5	<input type="checkbox"/>	3 /		3	ROCK SWALE 72 IN INSPECTION-AMH 'MH5'-AMH 'MH4'-RTB at 157.3 ft.JPG	
163.8 ft.	00:07:19	RTB					5	<input type="checkbox"/>	3 /		3	ROCK SWALE 72 IN INSPECTION-AMH 'MH5'-AMH 'MH4'-RTB at 163.8 ft.JPG	
169.6 ft.	00:07:40	RFB						<input type="checkbox"/>	9 /		2	ROCK SWALE 72 IN INSPECTION-AMH 'MH5'-AMH 'MH4'-RFB at 169.6 ft.JPG	
173.1 ft.	00:07:53	TBD				10.000		<input type="checkbox"/>	7 /		3	ROCK SWALE 72 IN INSPECTION-AMH 'MH5'-AMH 'MH4'-TBD at 173.1 ft.JPG	ENTERS PIPE AT OR BELOW FLOW LINE
174.1 ft.	00:08:23	MB						<input type="checkbox"/>	7 /		4	ROCK SWALE 72 IN INSPECTION-AMH 'MH5'-AMH 'MH4'-MB at 174.1 ft.JPG	
177.5 ft.	00:08:34	RFB						<input type="checkbox"/>	2 / 3		2	ROCK SWALE 72 IN INSPECTION-AMH 'MH5'-AMH 'MH4'-RFB at 177.5 ft.JPG	

Observations

Distance	Video Ref.	PACP Code	Continuous	S/M/L	Value Inches (mm)		%	Joint	Circumferential Location		Rating	Image Ref.	Remarks
					1st	2nd			At/From	To			
185.5 ft.	00:08:52	RFB						<input type="checkbox"/>	1 /	2	ROCK SWALE 72 IN INSPECTION-AMH 'MH5'-AMH 'MH4'-RFB at 185.5 ft.JPG		
197.8 ft.	00:09:08	RFB						<input type="checkbox"/>	3 /	2	ROCK SWALE 72 IN INSPECTION-AMH 'MH5'-AMH 'MH4'-RFB at 197.8 ft.JPG		
203.3 ft.	00:09:20	RTB				5		<input type="checkbox"/>	8 / 9	3	ROCK SWALE 72 IN INSPECTION-AMH 'MH5'-AMH 'MH4'-RTB at 203.3 ft.JPG		
208.1 ft.	00:10:09	TB			8.000			<input type="checkbox"/>	2 /		ROCK SWALE 72 IN INSPECTION-AMH 'MH5'-AMH 'MH4'-TB at 208.1 ft_1.JPG		
208.1 ft.	00:09:54	TB			8.000			<input type="checkbox"/>	10 /		ROCK SWALE 72 IN INSPECTION-AMH 'MH5'-AMH 'MH4'-TB at 208.1 ft.JPG		
212.6 ft.	00:10:24	RFB						<input type="checkbox"/>	3 /	2	ROCK SWALE 72 IN INSPECTION-AMH 'MH5'-AMH 'MH4'-RFB at 212.6 ft.JPG		
232.8 ft.	00:10:45	RTB				5		<input type="checkbox"/>	3 / 5	3	ROCK SWALE 72 IN INSPECTION-AMH 'MH5'-AMH 'MH4'-RTB at 232.8 ft.JPG		
233.1 ft.	00:11:52	DR	S02			5		<input type="checkbox"/>	/	4	ROCK SWALE 72 IN INSPECTION-AMH 'MH5'-AMH 'MH4'-DR at 233.1 ft.JPG		

Observations

Distance	Video Ref.	PACP Code	Continuous	S/M/L	Value Inches (mm)		%	Joint	Circumferential Location		Rating	Image Ref.	Remarks
					1st	2nd			At/From	To			
233.3 ft.	00:12:23	MMM		M				<input type="checkbox"/>	9 /		3	ROCK SWALE 72 IN INSPECTION-AMH 'MH5'-AMH 'MH4'-MMM at 233.3 ft.JPG	
250.1 ft.	00:12:59	DR	F02				5	<input type="checkbox"/>	/		4	ROCK SWALE 72 IN INSPECTION-AMH 'MH5'-AMH 'MH4'-DR at 250.1 ft.JPG	
262.6 ft.	00:13:41	RTB					5	<input type="checkbox"/>	3 /		3	ROCK SWALE 72 IN INSPECTION-AMH 'MH5'-AMH 'MH4'-RTB at 262.6 ft.JPG	3 INCH THICKNESS
313.4 ft.	00:14:44	OBZ					5	<input type="checkbox"/>	6 /		2	ROCK SWALE 72 IN INSPECTION-AMH 'MH5'-AMH 'MH4'-OBZ at 313.4 ft.JPG	UNKNOWN
329.4 ft.	00:15:31	MWLS					15	<input type="checkbox"/>	/		2	ROCK SWALE 72 IN INSPECTION-AMH 'MH5'-AMH 'MH4'-MWLS at 329.4 ft.JPG	
347.9 ft.	00:15:52	RTB					5	<input type="checkbox"/>	9 /		3	ROCK SWALE 72 IN INSPECTION-AMH 'MH5'-AMH 'MH4'-RTB at 347.9 ft.JPG	
396.4 ft.	00:16:31	RFB						<input type="checkbox"/>	9 /		2	ROCK SWALE 72 IN INSPECTION-AMH 'MH5'-AMH 'MH4'-RFB at 396.4 ft.JPG	
493.0 ft.	00:17:45	SSC						<input type="checkbox"/>	12 /		1	ROCK SWALE 72 IN INSPECTION-AMH 'MH5'-AMH 'MH4'-SSC at 493.0 ft.JPG	DAMAGED BRICK FRACTURED

Observations

Distance	Video Ref.	PACP Code	Continuous	S/M/L	Value Inches (mm)		%	Joint	Circumferential Location		Rating	Image Ref.	Remarks
					1st	2nd			At/From	To			
584.0 ft.	00:19:09	RFB						<input type="checkbox"/>	3 /		2	ROCK SWALE 72 IN INSPECTION-AMH 'MH5'-AMH 'MH4'-RFB at 584.0 ft.JPG	
595.6 ft.	00:19:41	MGO						<input type="checkbox"/>	/			ROCK SWALE 72 IN INSPECTION-AMH 'MH5'-AMH 'MH4'-MGO at 595.6 ft.JPG	MOTOR SEPERATED FROM BRICKS
600.9 ft.	00:20:14	RFB						<input type="checkbox"/>	9 /		2	ROCK SWALE 72 IN INSPECTION-AMH 'MH5'-AMH 'MH4'-RFB at 600.9 ft.JPG	
610.5 ft.	00:20:37	RTB					5	<input type="checkbox"/>	9 /		3	ROCK SWALE 72 IN INSPECTION-AMH 'MH5'-AMH 'MH4'-RTB at 610.5 ft.JPG	3IN THICK
621.1 ft.	00:21:46	IR						<input type="checkbox"/>	3 /		4	ROCK SWALE 72 IN INSPECTION-AMH 'MH5'-AMH 'MH4'-IR at 621.1 ft.JPG	
634.0 ft.	00:22:04	RMB					5	<input type="checkbox"/>	9 /		4	ROCK SWALE 72 IN INSPECTION-AMH 'MH5'-AMH 'MH4'-RMB at 634.0 ft.JPG	
638.5 ft.	00:22:21	RTB					5	<input type="checkbox"/>	9 /		3	ROCK SWALE 72 IN INSPECTION-AMH 'MH5'-AMH 'MH4'-RTB at 638.5 ft.JPG	
653.5 ft.	00:22:51	RFB						<input type="checkbox"/>	9 /		2	ROCK SWALE 72 IN INSPECTION-AMH 'MH5'-AMH 'MH4'-RFB at 653.5 ft.JPG	

Observations

Distance	Video Ref.	PACP Code	Continuous	S/M/L	Value Inches (mm)		%	Joint	Circumferential Location		Rating	Image Ref.	Remarks
					1st	2nd			At/From	To			
680.2 ft.	00:23:17	RFB						<input type="checkbox"/>	8 / 9	2	ROCK SWALE 72 IN INSPECTION-AMH 'MH5'-AMH 'MH4'-RFB at 680.2 ft.JPG		
766.7 ft.	00:24:20	TB			8.000			<input type="checkbox"/>	10 /		ROCK SWALE 72 IN INSPECTION-AMH 'MH5'-AMH 'MH4'-TB at 766.7 ft.JPG		
787.8 ft.	00:24:58	MGO						<input type="checkbox"/>	/		ROCK SWALE 72 IN INSPECTION-AMH 'MH5'-AMH 'MH4'-MGO at 787.8 ft.JPG	6IN CONNCECTION 100% BLOCKED IN INVERT	
845.5 ft.	00:26:13	RFB						<input type="checkbox"/>	9 / 10	2	ROCK SWALE 72 IN INSPECTION-AMH 'MH5'-AMH 'MH4'-RFB at 845.5 ft.JPG		
847.9 ft.	00:26:33	RFB						<input type="checkbox"/>	12 /	2	ROCK SWALE 72 IN INSPECTION-AMH 'MH5'-AMH 'MH4'-RFB at 847.9 ft.JPG		
878.9 ft.	00:27:04	RTB					10	<input type="checkbox"/>	3 /	3	ROCK SWALE 72 IN INSPECTION-AMH 'MH5'-AMH 'MH4'-RTB at 878.9 ft.JPG		
878.9 ft.	00:27:29	RFB						<input type="checkbox"/>	9 /	2	ROCK SWALE 72 IN INSPECTION-AMH 'MH5'-AMH 'MH4'-RFB at 878.9 ft.JPG		
896.1 ft.	00:27:51	RMB					5	<input type="checkbox"/>	3 /	4	ROCK SWALE 72 IN INSPECTION-AMH 'MH5'-AMH 'MH4'-RMB at 896.1 ft.JPG		

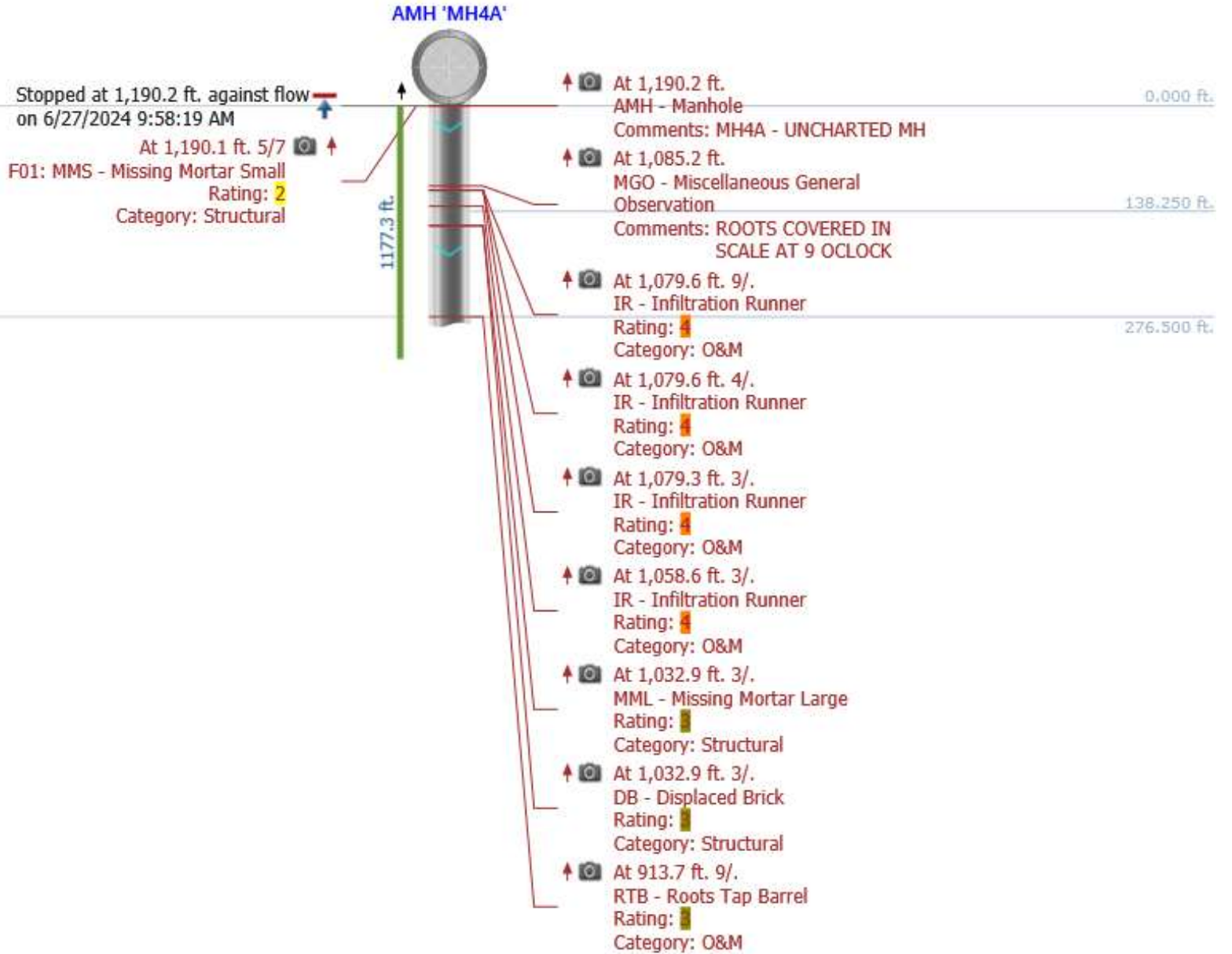
Observations

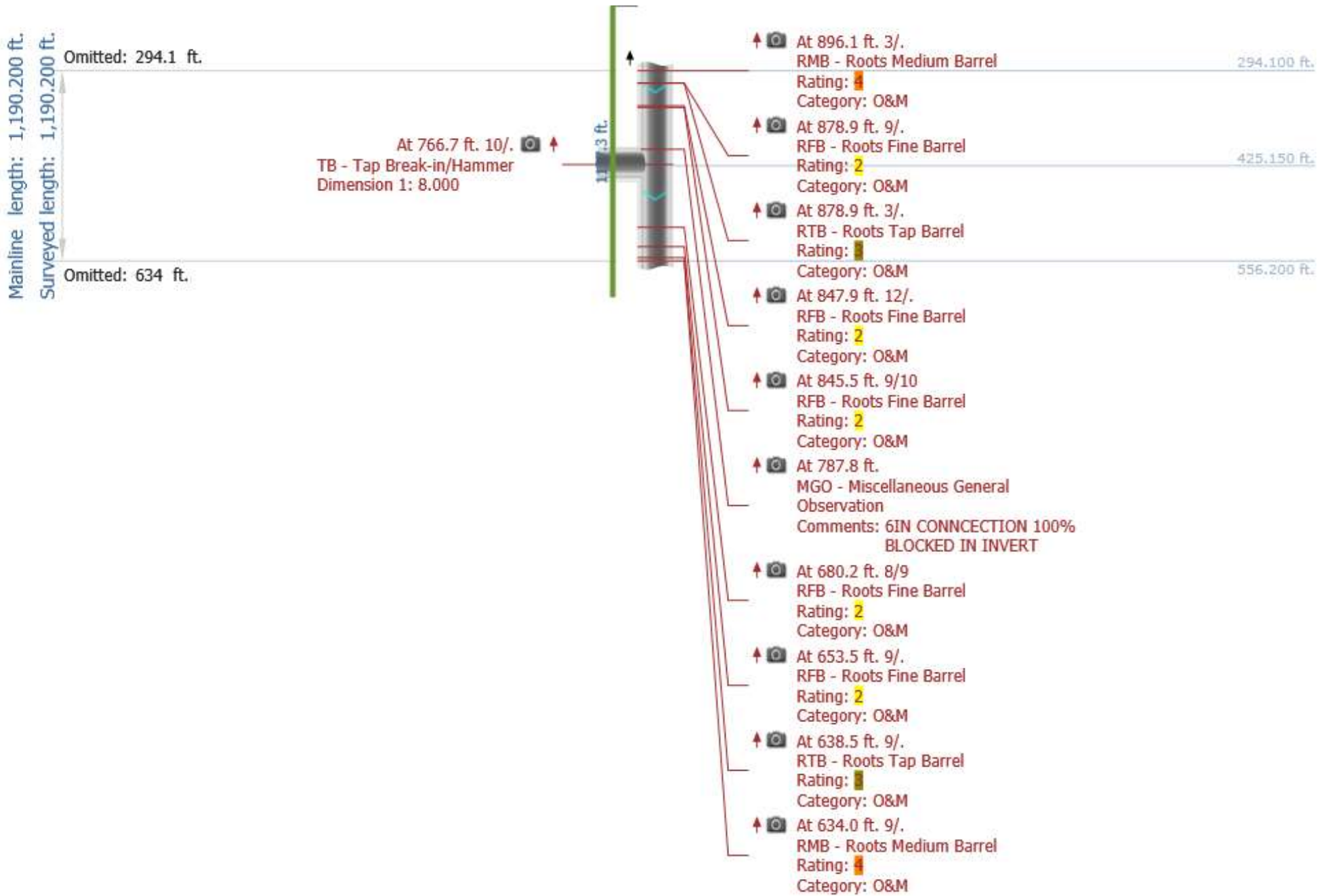
Distance	Video Ref.	PACP Code	Continuous	S/M/L	Value Inches (mm)		%	Joint	Circumferential Location		Rating	Image Ref.	Remarks
					1st	2nd			At/From	To			
913.7 ft.	00:28:21	RTB					5	<input type="checkbox"/>	9 /		3	ROCK SWALE 72 IN INSPECTION-AMH 'MH5'-AMH 'MH4'-RTB at 913.7 ft.JPG	
1,032.9 ft.	00:29:57	MML		L				<input type="checkbox"/>	3 /		3	ROCK SWALE 72 IN INSPECTION-AMH 'MH5'-AMH 'MH4'-MML at 1_032.9 ft.JPG	
1,032.9 ft.	00:29:42	DB						<input type="checkbox"/>	3 /		3	ROCK SWALE 72 IN INSPECTION-AMH 'MH5'-AMH 'MH4'-DB at 1_032.9 ft.JPG	
1,058.6 ft.	00:30:27	IR						<input type="checkbox"/>	3 /		4	ROCK SWALE 72 IN INSPECTION-AMH 'MH5'-AMH 'MH4'-IR at 1_058.6 ft.JPG	
1,079.3 ft.	00:30:53	IR						<input type="checkbox"/>	3 /		4	ROCK SWALE 72 IN INSPECTION-AMH 'MH5'-AMH 'MH4'-IR at 1_079.3 ft.JPG	
1,079.6 ft.	00:31:04	IR						<input type="checkbox"/>	4 /		4	ROCK SWALE 72 IN INSPECTION-AMH 'MH5'-AMH 'MH4'-IR at 1_079.6 ft.JPG	
1,079.6 ft.	00:31:14	IR						<input type="checkbox"/>	9 /		4	ROCK SWALE 72 IN INSPECTION-AMH 'MH5'-AMH 'MH4'-IR at 1_079.6 ft_1.JPG	
1,085.2 ft.	00:31:36	MGO						<input type="checkbox"/>	/			ROCK SWALE 72 IN INSPECTION-AMH 'MH5'-AMH 'MH4'-MGO at 1_085.2 ft.JPG	ROOTS COVERED IN SCALE AT 9 OCLOCK

Observations

Distance	Video Ref.	PACP Code	Continuous	S/M/L	Value Inches (mm)		%	Joint	Circumferential Location		Rating	Image Ref.	Remarks
					1st	2nd			At/From	To			
1,190.1 ft.	00:33:16	MMS	F01	S				<input type="checkbox"/>	5	7	2	ROCK SWALE 72 IN INSPECTION-AMH 'MH5'-AMH 'MH4'-MMS at 1_190.1 ft.JPG	
1,190.2 ft.	00:33:40	AMH						<input type="checkbox"/>	/			ROCK SWALE 72 IN INSPECTION-AMH 'MH5'-AMH 'MH4A'-AMH at 1_190.2 ft.JPG	MH4A - UNCHARTED MH

Mainline length: 1,190.200 ft.
 Surveyed length: 1,190.200 ft.
 Omitted: 913.7 ft.





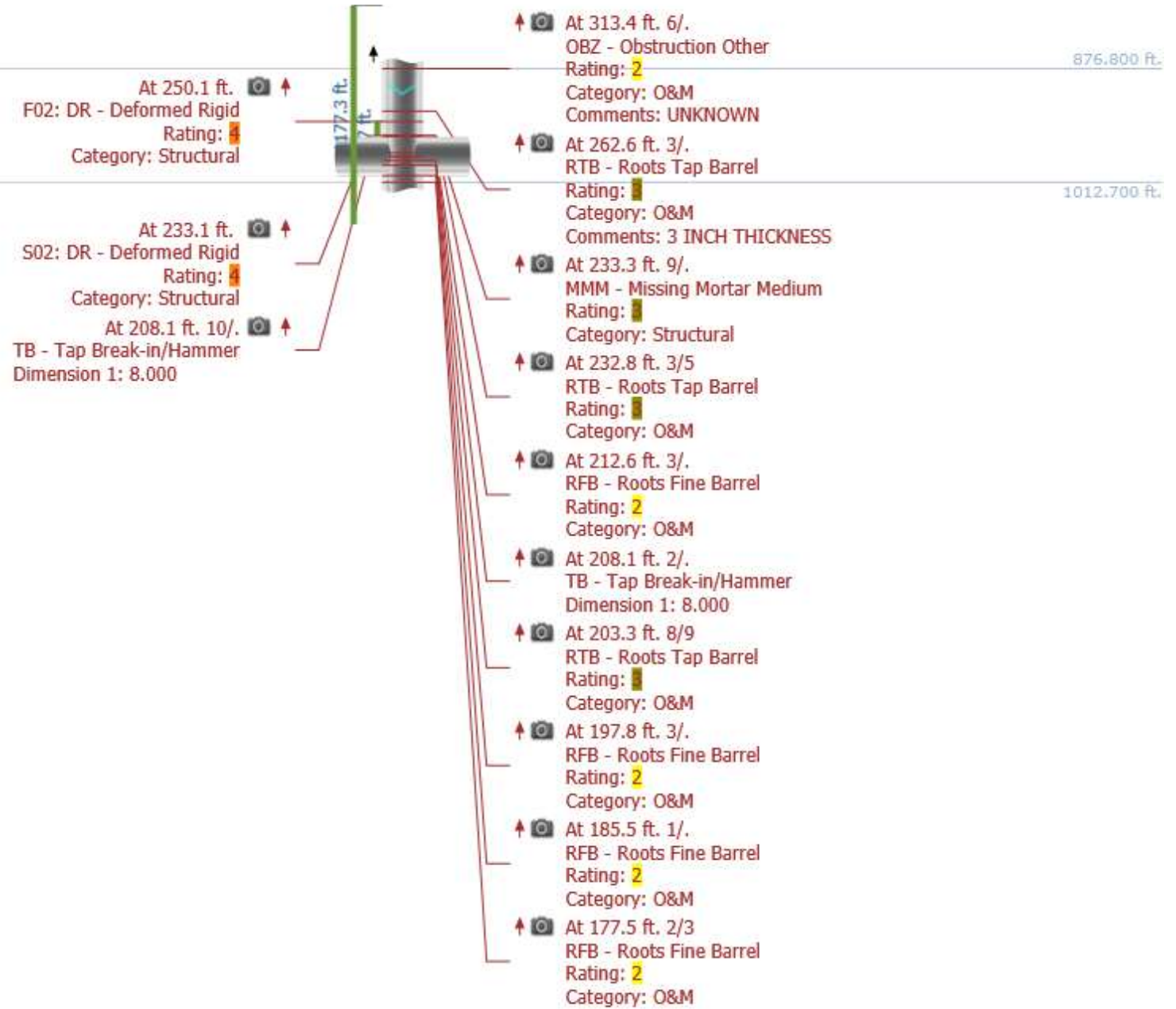
Mainline length: 1,190.200 ft.
 Surveyed length: 1,190.200 ft.
 Omitted: 569.1 ft.
 Omitted: 329.4 ft.

1177.3 ft.



- ↑ At 621.1 ft. 3/.
 IR - Infiltration Runner
 Rating:
 Category: O&M 569.100 ft.
- ↑ At 610.5 ft. 9/.
 RTB - Roots Tap Barrel
 Rating:
 Category: O&M 714.950 ft.
 Comments: 3IN THICK
- ↑ At 600.9 ft. 9/.
 RFB - Roots Fine Barrel
 Rating:
 Category: O&M 860.800 ft.
- ↑ At 595.6 ft.
 MGO - Miscellaneous General
 Observation
 Comments: MOTOR SEPERATED
 FROM BRICKS
- ↑ At 584.0 ft. 3/.
 RFB - Roots Fine Barrel
 Rating:
 Category: O&M
- ↑ At 493.0 ft. 12/.
 SSC - Surface Spalling of
 Damage Coating
 Rating:
 Category: Structural
 Comments: DAMAGED BRICK
 FRACTURED
- ↑ At 396.4 ft. 9/.
 RFB - Roots Fine Barrel
 Rating:
 Category: O&M
- ↑ At 347.9 ft. 9/.
 RTB - Roots Tap Barrel
 Rating:
 Category: O&M
- ↑ At 329.4 ft.
 MWLS - Miscellaneous Water
 Level Sag
 Rating:
 Category: Structural

Mainline length: 1,190.200 ft.
 Omitted: 876.8 ft.
 Surveyed length: 1,190.200 ft.
 Omitted: 177.5 ft.

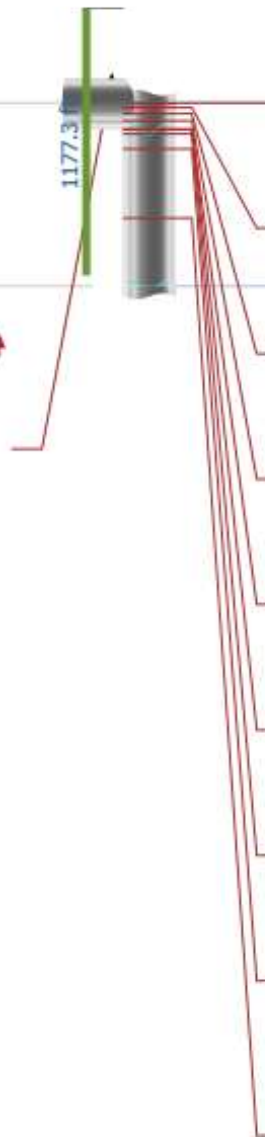


Mainline length: 1,190.200 ft.
Surveyed length: 1,190.200 ft.

Omitted: 1016.1 ft.

Omitted: 3 ft.

At 173.1 ft. 7/.
TBD - Tap Break-in/Hammer
Defective
Dimension 1: 10.000
Rating: ■
Category: O&M
Comments: ENTERS PIPE AT OR
BELOW FLOW LINE

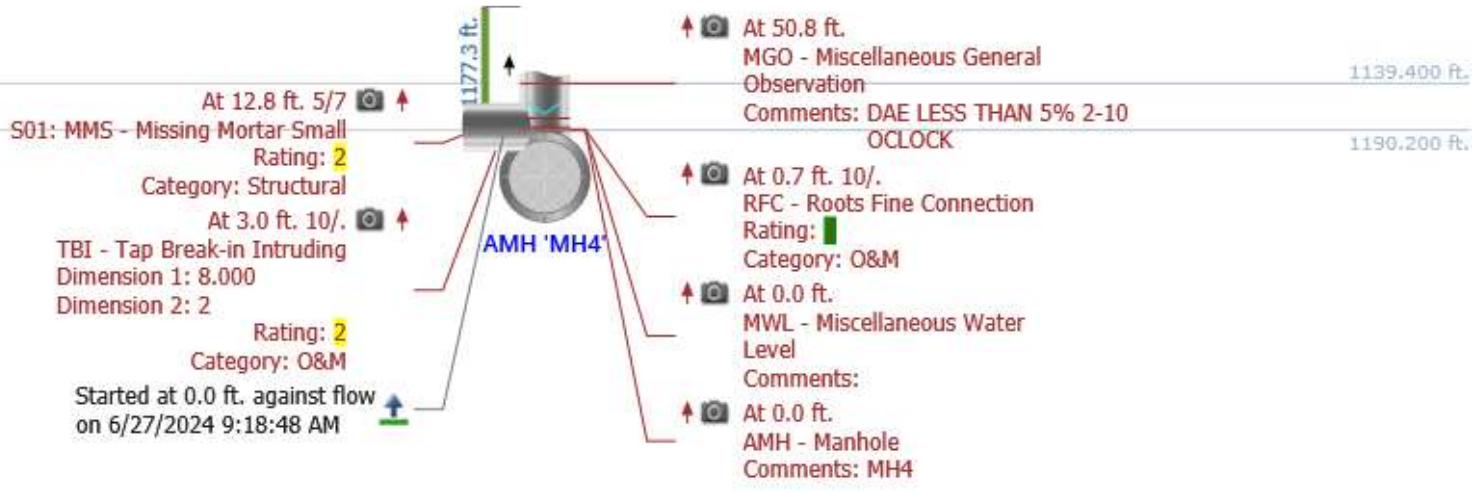


- ↑ At 174.1 ft. 7/.
MB - Missing Brick
Rating: ■
Category: Structural
- ↑ At 169.6 ft. 9/.
RFB - Roots Fine Barrel
Rating: 2
Category: O&M
- ↑ At 163.8 ft. 3/.
RTB - Roots Tap Barrel
Rating: ■
Category: O&M
- ↑ At 157.3 ft. 3/.
RTB - Roots Tap Barrel
Rating: ■
Category: O&M
- ↑ At 149.4 ft. 3/.
RFB - Roots Fine Barrel
Rating: 2
Category: O&M
- ↑ At 149.1 ft. 7/9
RFB - Roots Fine Barrel
Rating: 2
Category: O&M
- ↑ At 145.0 ft. 3/5
RTB - Roots Tap Barrel
Rating: ■
Category: O&M
- ↑ At 131.1 ft. 2/.
RFB - Roots Fine Barrel
Rating: 2
Category: O&M
- ↑ At 66.5 ft. 9/.
OBI - Obstruction Intruding
Through Wall
Rating: ■
Category: O&M
Comments: STAKE OR NAIL

1016.100 ft.

1187.200 ft.

Mainline length: 1,190.200 ft.
Surveyed length: 1,190.200 ft.
Omitted: 1139.4 ft.



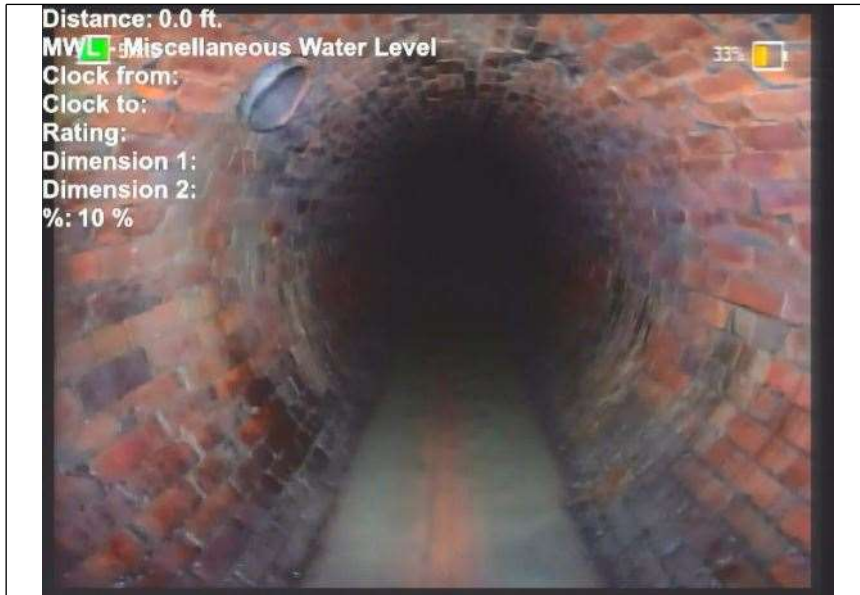
Photos



At: 0 ft. AMH - Manhole
Joint: No MH4



At: 0 ft. AMH - Manhole
Joint: No MH4



At: 0 ft. MWL - Miscellaneous Water Level
Joint: No 10 %



At: 0.6999999880
79071 ft.
10/.
Joint: No

Photos

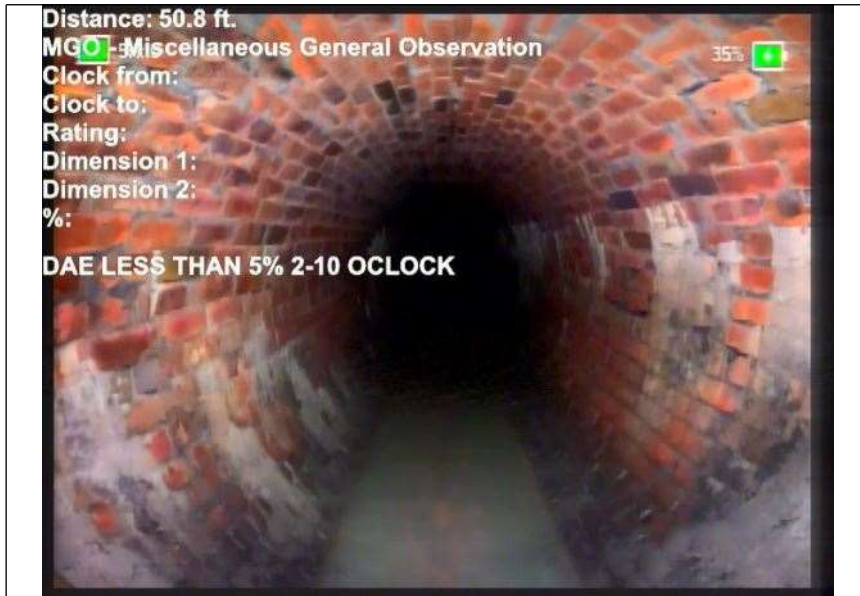


At: 3 ft. 10/ TBI - Tap Break-in Intruding
Joint: No



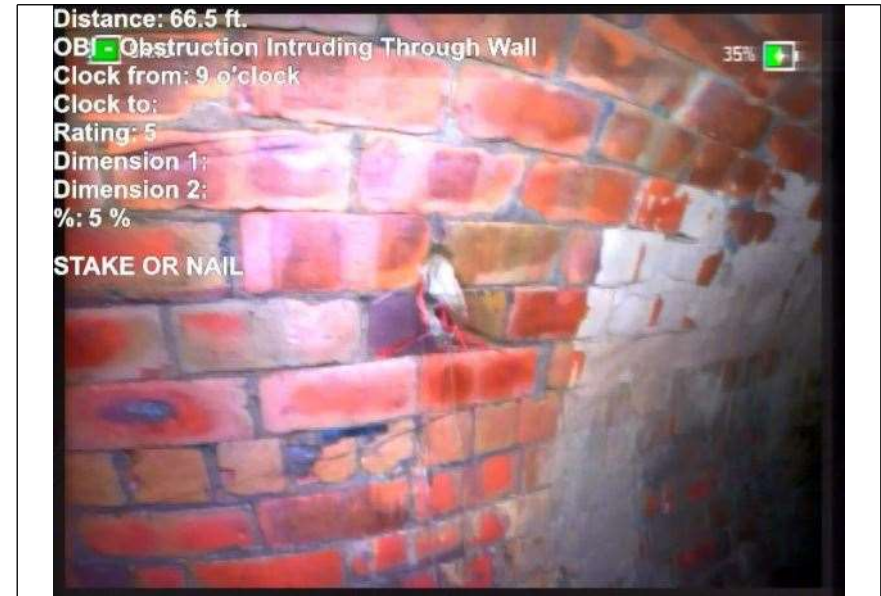
At: 12. MMS - Missing Mortar Small
8000001907
349 ft. 5/7
Joint: No

Photos



At: 50. 7999992370
MGO - Miscellaneous General Observation
605 ft.

Joint: No DAE LESS THAN 5% 2-10 OCLOCK



At: 66.5 ft. 9/
OBI - Obstruction Intruding Through Wall
Joint: No 5 % STAKE OR NAIL

Photos



At: 131. RFB - Roots Fine Barrel
1000061035
16 ft. 2/.
Joint: No



At: 145 ft. 3/5 RTB - Roots Tap Barrel
Joint: No 5 %

Photos



At: 149. RFB - Roots Fine Barrel
1000061035
16 ft. 7/9

Joint: No



At: 149. RFB - Roots Fine Barrel
3999938964
84 ft. 3/.

Joint: No

Photos



At: 157. RTB - Roots Tap Barrel
3000030517
58 ft. 3/.

Joint: No 5 %



At: 163. RTB - Roots Tap Barrel
8000030517
58 ft. 3/.

Joint: No 5 %

Photos



At: 169. RFB - Roots Fine Barrel
6000061035
16 ft. 9/.

Joint: No



At: 173. TBD - Tap Break-in/Hammer Defective
1000061035
16 ft. 7/.

Joint: No ENTERS PIPE AT OR BELOW FLOW LINE

Photos



At: 174. MB - Missing Brick
1000061035
16 ft. 7/.

Joint: No



At: 177.5 ft. 2/3 RFB - Roots Fine Barrel
Joint: No



At: 185.5 ft. 1/. RFB - Roots Fine Barrel

Joint: No

Photos



At: 197. RFB - Roots Fine Barrel
8000030517
58 ft. 3/.

Joint: No



At: 203. RTB - Roots Tap Barrel
3000030517
58 ft. 8/9

Joint: No 5 %

Photos



At: 208. TB - Tap Break-in/Hammer
1000061035
16 ft. 2/.

Joint: No



At: 208. TB - Tap Break-in/Hammer
1000061035
16 ft. 10/.

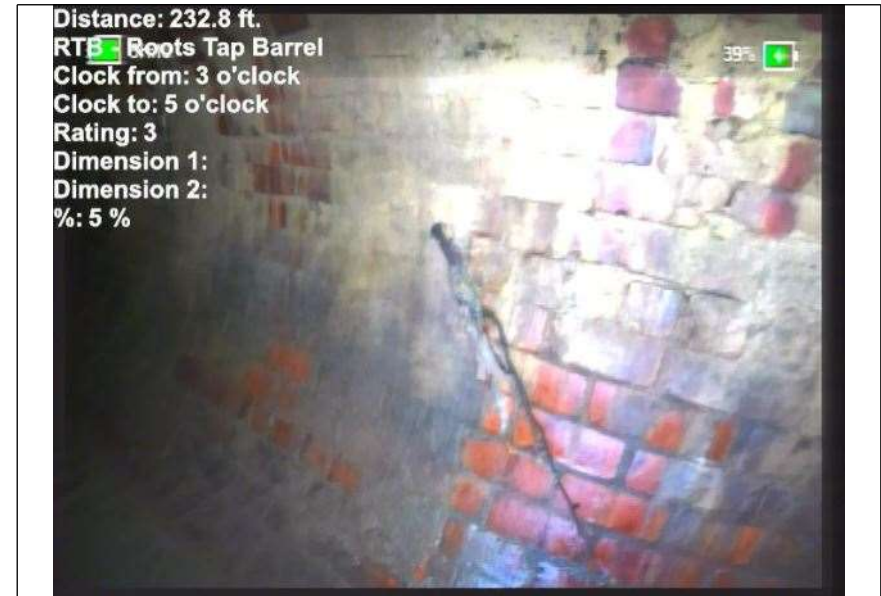
Joint: No

Photos



At: 212. RFB - Roots Fine Barrel
6000061035
16 ft. 3/.

Joint: No



At: 232. RTB - Roots Tap Barrel
8000030517
58 ft. 3/5

Joint: No 5 %

Photos



At: 233. 1000061035
DR - Deformed Rigid
16 ft.

Joint: No 5 %



At: 233. 3000030517
MMM - Missing Mortar Medium
58 ft. 9 in.

Joint: No

Photos



At: 250. DR - Deformed Rigid
1000061035
16 ft.

Joint: No 5 %



At: 262. RTB - Roots Tap Barrel
6000061035
16 ft. 3/.

Joint: No 5 % **3 INCH THICKNESS**

Photos



At: 313. OBZ - Obstruction Other
3999938964
84 ft. 6/.

Joint: No 5 % UNKNOWN



At: 329. MWLS - Miscellaneous Water Level Sag
3999938964
84 ft.

Joint: No 15 %

Photos



At: 347. RTB - Roots Tap Barrel
8999938964
84 ft. 9/.

Joint: No 5 %



At: 396. RFB - Roots Fine Barrel
3999938964
84 ft. 9/.

Joint: No



At: 493 ft. 12/. SSC - Surface Spalling of Damage Coating
Joint: No **DAMAGED BRICK FRACTURED**



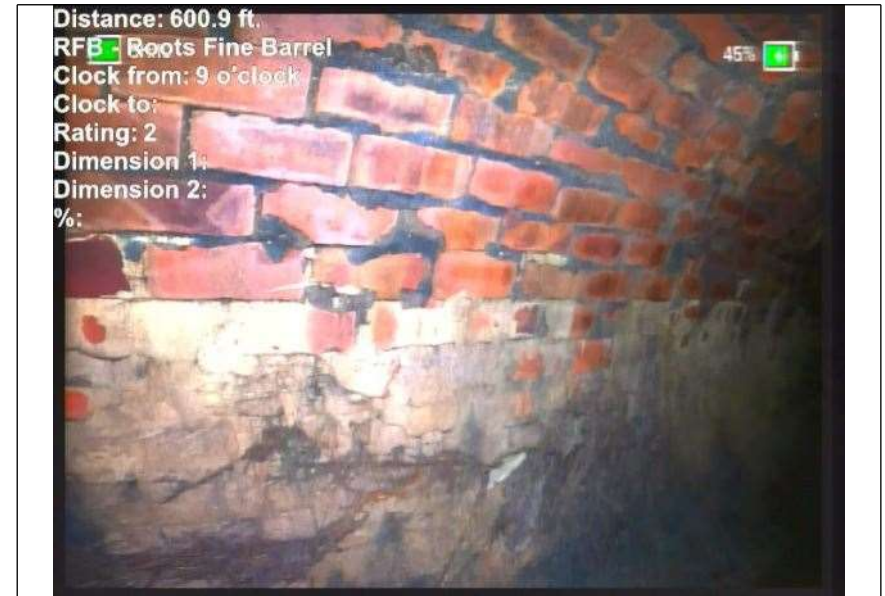
At: 584 ft. 3/. RFB - Roots Fine Barrel
Joint: No

Photos



At: 595. MGO - Miscellaneous General Observation
5999755859
38 ft.

Joint: No MOTOR SEPERATED FROM BRICKS



At: 600. RFB - Roots Fine Barrel
9000244140
63 ft. 9/.

Joint: No



At: 610.5 ft. 9/. RTB - Roots Tap Barrel

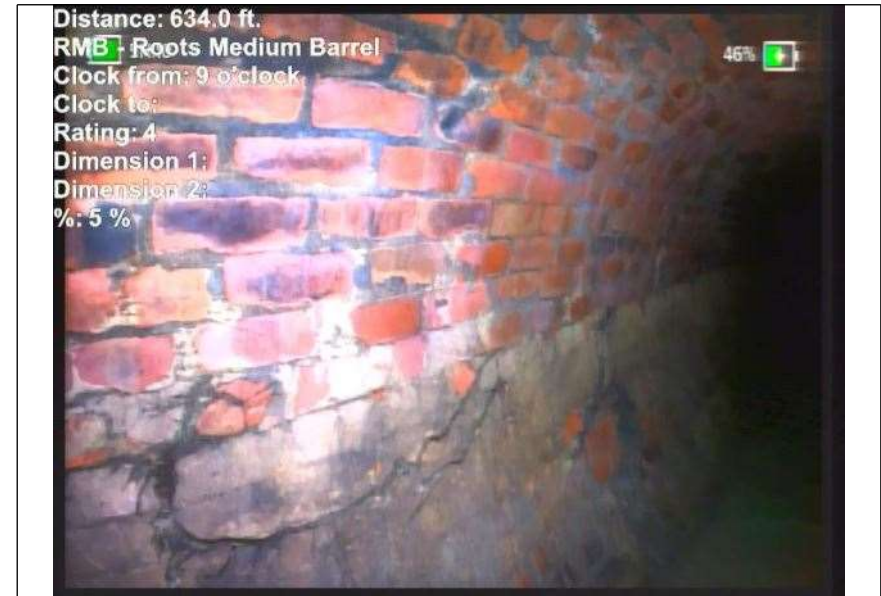
Joint: No 5 % 3IN THICK

Photos



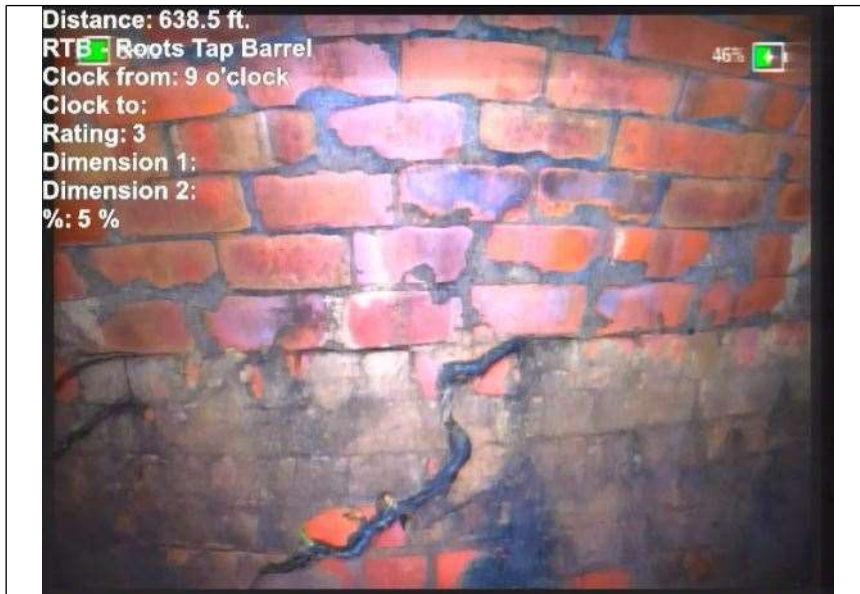
At: 621. IR - Infiltration Runner
0999755859
38 ft. 3/.

Joint: No



At: 634 ft. 9/. RMB - Roots Medium Barrel

Joint: No 5 %



At: 638.5 ft. 9/. RTB - Roots Tap Barrel

Joint: No 5 %



At: 653.5 ft. 9/. RFB - Roots Fine Barrel

Joint: No

Photos



At: 680. RFB - Roots Fine Barrel
2000122070
31 ft. 8/9

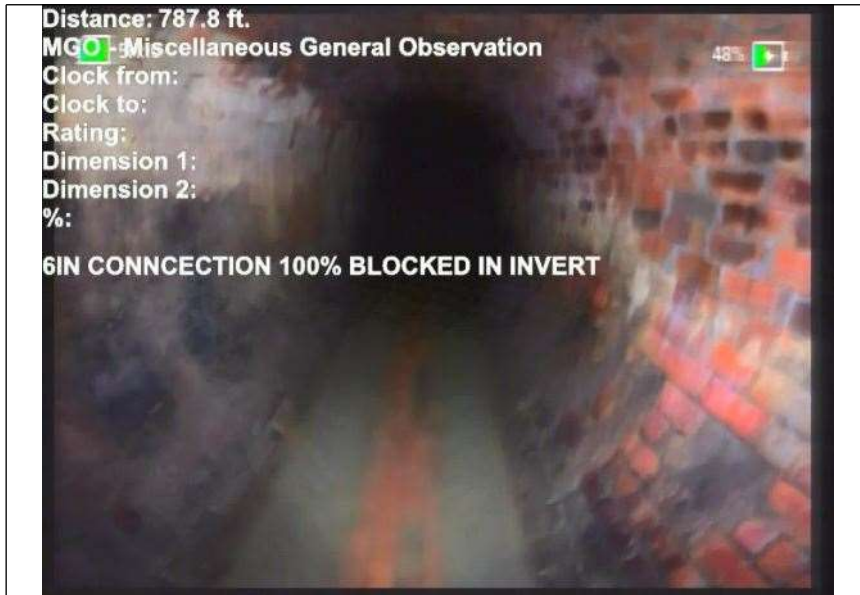
Joint: No



At: 766. TB - Tap Break-in/Hammer
7000122070
31 ft. 10/.

Joint: No

Photos



At: 787.7999877929 MGO - Miscellaneous General Observation
69 ft.
Joint: No 6IN CONNCECTION 100% BLOCKED IN INVERT



At: 845.5 ft. RFB - Roots Fine Barrel
9/10
Joint: No

Photos



At: 847. RFB - Roots Fine Barrel
9000244140
63 ft. 12/.

Joint: No



At: 878. RTB - Roots Tap Barrel
9000244140
63 ft. 3/.

Joint: No 10 %

Photos



At: 878. RFB - Roots Fine Barrel
9000244140
63 ft. 9/.

Joint: No



At: 896. RMB - Roots Medium Barrel
0999755859
38 ft. 3/.

Joint: No 5 %

Photos



At: 913. RTB - Roots Tap Barrel
7000122070
31 ft. 9/.

Joint: No 5 %



At: 1032. MML - Missing Mortar Large
9000244140
6 ft. 3/.

Joint: No

Photos



At: 1032. DB - Displaced Brick
9000244140
6 ft. 3/.

Joint: No



At: 1058. IR - Infiltration Runner
5999755859
4 ft. 3/.

Joint: No

Photos



At: 1079. IR - Infiltration Runner
3000488281
3 ft. 3/.

Joint: No



At: 1079. IR - Infiltration Runner
5999755859
4 ft. 4/.

Joint: No

Photos



At: 1079. IR - Infiltration Runner
5999755859
4 ft. 9/.

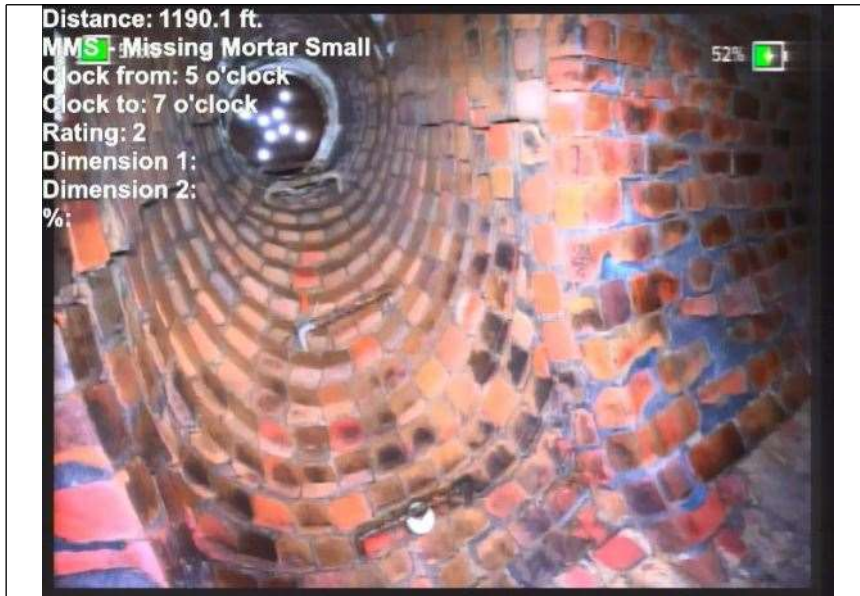
Joint: No



At: 1085. MGO - Miscellaneous General Observation
1999511718
8 ft.

Joint: No ROOTS COVERED IN SCALE AT 9 OCLOCK

Photos



At: 1190. MMS - Missing Mortar Small
0999755859
4 ft. 5/7

Joint: No



At: 1190. AMH - Manhole
1999511718
8 ft.

Joint: No MH4A - UNCHARTED MH