

## PACP Report with Pipe Run and Incident Snapshots

Surveyed by: <b>ANDREW</b>	Certificate number: <b>T-507-4975</b>	Owner: <b>CITY OF MARION</b>	Customer:	Drainage area:	P/O number:	Sheet number:			
Pipe segment ref.: <b>MH2_MH1</b>	Start date/time: <b>20240627 13:12</b>	Street: <b>1432 HOLLAND ROAD</b>	City: <b>MARION, OH</b>						
Location details:	Upstream MH No: <b>MH2</b>	Rim to invert:	Grade to invert:	Rim to grade:					
Pipe use: <b>CB</b>	Direction: <b>D</b>	Flow control:	Downstream MH No: <b>MH1</b>	Rim to invert:	Grade to invert:	Rim to grade:			
Height: <b>72 in.</b>	Width:	Shape: <b>C</b>	Material: <b>BR</b>	Lining method:	Pipe joint length:	Total length: <b>694.800 ft.</b>	Length surveyed: <b>694.800 ft.</b>	Purpose:	Sewer category:
Media label:	Pre-cleaning: <b>N</b>	Date cleaned:	Weather: <b>1</b>	Location code: <b>C</b>	Pressure value:				
Project name: <b>ROCK SWALE 72 IN INSPECTION</b>	Additional info:								

Grade	Structural:					O&M:					Overall:	
	Amount of Defects	Segment Grade	Pipe Rating	Quick Rating	Pipe Rating Index	Amount of Defects	Segment Grade	Pipe Rating	Quick Rating	Pipe Rating Index	Pipe Rating	Pipe Rating Index
1	0	0	356	423H	2.3	0	0	194	4332	2.1	550	2.2
2	105	210				88	176					
3	46	138				2	6					
4	2	8				3	12					
5	0	0				0	0					

## Observations

Distance	Video Ref.	PACP Code	Continuous	S/M/L	Value Inches (mm)		%	Joint	Circumferential Location		Rating	Image Ref.	Remarks
					1st	2nd			At/From	To			
0.0 ft.	00:00:00	AMH						<input type="checkbox"/>	/			ROCK SWALE 72 IN INSPECTION-AMH 'MH2'-AMH 'MH1'-AMH at 0.0 ft.JPG	MH2
0.0 ft.	00:00:29	MWL					5	<input type="checkbox"/>	/			ROCK SWALE 72 IN INSPECTION-AMH 'MH2'-AMH 'MH1'-MWL at 0.0 ft.JPG	
3.6 ft.	00:00:49	MMS	S01	S				<input type="checkbox"/>	5 / 7		2	ROCK SWALE 72 IN INSPECTION-AMH 'MH2'-AMH 'MH1'-MMS at 3.6 ft.JPG	
3.8 ft.	00:01:00	MGO						<input type="checkbox"/>	/			ROCK SWALE 72 IN INSPECTION-AMH 'MH2'-AMH 'MH1'-MGO at 3.8 ft.JPG	DAE LESS THAN 5% 2-10 OCLOCK VARRYING IN POSITION
3.9 ft.	00:01:25	RFB						<input type="checkbox"/>	9 /		2	ROCK SWALE 72 IN INSPECTION-AMH 'MH2'-AMH 'MH1'-RFB at 3.9 ft.JPG	
92.8 ft.	00:02:29	ID						<input type="checkbox"/>	12 /		3	ROCK SWALE 72 IN INSPECTION-AMH 'MH2'-AMH 'MH1'-ID at 92.8 ft.JPG	
209.3 ft.	00:03:43	RFB						<input type="checkbox"/>	12 /		2	ROCK SWALE 72 IN INSPECTION-AMH 'MH2'-AMH 'MH1'-RFB at 209.3 ft.JPG	
223.4 ft.	00:04:04	RFB						<input type="checkbox"/>	9 /		2	ROCK SWALE 72 IN INSPECTION-AMH 'MH2'-AMH 'MH1'-RFB at 223.4 ft.JPG	

## Observations

Distance	Video Ref.	PACP Code	Continuous	S/M/L	Value Inches (mm)		%	Joint	Circumferential Location		Rating	Image Ref.	Remarks
					1st	2nd			At/From	To			
227.7 ft.	00:04:17	RFB						<input type="checkbox"/>	8 /	2	ROCK SWALE 72 IN INSPECTION-AMH 'MH2'-AMH 'MH1'-RFB at 227.7 ft.JPG		
235.0 ft.	00:04:31	RFB						<input type="checkbox"/>	9 / 1	2	ROCK SWALE 72 IN INSPECTION-AMH 'MH2'-AMH 'MH1'-RFB at 235.0 ft.JPG	VARYING IN POSITION	
244.7 ft.	00:04:56	RFB						<input type="checkbox"/>	11 /	2	ROCK SWALE 72 IN INSPECTION-AMH 'MH2'-AMH 'MH1'-RFB at 244.7 ft.JPG		
249.9 ft.	00:05:30	RTB				5		<input type="checkbox"/>	8 /	3	ROCK SWALE 72 IN INSPECTION-AMH 'MH2'-AMH 'MH1'-RTB at 249.9 ft.JPG		
278.8 ft.	00:06:02	RFB						<input type="checkbox"/>	9 /	2	ROCK SWALE 72 IN INSPECTION-AMH 'MH2'-AMH 'MH1'-RFB at 278.8 ft.JPG		
291.7 ft.	00:06:34	RFB						<input type="checkbox"/>	10 /	2	ROCK SWALE 72 IN INSPECTION-AMH 'MH2'-AMH 'MH1'-RFB at 291.7 ft.JPG		
301.9 ft.	00:06:57	RFB						<input type="checkbox"/>	7 / 5	2	ROCK SWALE 72 IN INSPECTION-AMH 'MH2'-AMH 'MH1'-RFB at 301.9 ft.JPG	VARYING IN POSITION	
309.5 ft.	00:07:16	MGO						<input type="checkbox"/>	/		ROCK SWALE 72 IN INSPECTION-AMH 'MH2'-AMH 'MH1'-MGO at 309.5 ft.JPG	LEAF AT 12 EVIDENCE OF SURCHARGE	

## Observations

Distance	Video Ref.	PACP Code	Continuous	S/M/L	Value Inches (mm)		%	Joint	Circumferential Location		Rating	Image Ref.	Remarks
					1st	2nd			At/From	To			
318.1 ft.	00:07:45	RFB						<input type="checkbox"/>	11 /		2	ROCK SWALE 72 IN INSPECTION-AMH 'MH2'-AMH 'MH1'-RFB at 318.1 ft.JPG	
367.0 ft.	00:08:29	DB						<input type="checkbox"/>	11 /		3	ROCK SWALE 72 IN INSPECTION-AMH 'MH2'-AMH 'MH1'-DB at 367.0 ft.JPG	
389.1 ft.	00:08:49	MML		L				<input type="checkbox"/>	3 /		3	ROCK SWALE 72 IN INSPECTION-AMH 'MH2'-AMH 'MH1'-MML at 389.1 ft.JPG	
422.6 ft.	00:09:22	MGO						<input type="checkbox"/>	/			ROCK SWALE 72 IN INSPECTION-AMH 'MH2'-AMH 'MH1'-MGO at 422.6 ft.JPG	EVIDENCE OF SURCHARGE
434.1 ft.	00:09:55	DSGV					5	<input type="checkbox"/>	6 /		2	ROCK SWALE 72 IN INSPECTION-AMH 'MH2'-AMH 'MH1'-DSGV at 434.1 ft.JPG	
438.8 ft.	00:10:27	RFB	S03					<input type="checkbox"/>	3 /		2	ROCK SWALE 72 IN INSPECTION-AMH 'MH2'-AMH 'MH1'-RFB at 438.8 ft_1.JPG	
438.8 ft.	00:10:14	RFB	S02					<input type="checkbox"/>	9 /		2	ROCK SWALE 72 IN INSPECTION-AMH 'MH2'-AMH 'MH1'-RFB at 438.8 ft.JPG	
455.3 ft.	00:10:51	DSGV					5	<input type="checkbox"/>	6 /		2	ROCK SWALE 72 IN INSPECTION-AMH 'MH2'-AMH 'MH1'-DSGV at 455.3 ft.JPG	

## Observations

Distance	Video Ref.	PACP Code	Continuous	S/M/L	Value Inches (mm)		%	Joint	Circumferential Location		Rating	Image Ref.	Remarks
					1st	2nd			At/From	To			
460.3 ft.	00:11:06	DSGV					5	<input type="checkbox"/>	6 /		2	ROCK SWALE 72 IN INSPECTION-AMH 'MH2'-AMH 'MH1'-DSGV at 460.3 ft.JPG	
460.7 ft.	00:11:19	RFB	F02					<input type="checkbox"/>	9 /		2	ROCK SWALE 72 IN INSPECTION-AMH 'MH2'-AMH 'MH1'-RFB at 460.7 ft.JPG	
460.8 ft.	00:11:49	RFB	F03					<input type="checkbox"/>	3 /		2	ROCK SWALE 72 IN INSPECTION-AMH 'MH2'-AMH 'MH1'-RFB at 460.8 ft.JPG	
460.8 ft.	00:11:59	RFB	S04					<input type="checkbox"/>	9 / 3		2	ROCK SWALE 72 IN INSPECTION-AMH 'MH2'-AMH 'MH1'-RFB at 460.8 ft_1.JPG	
479.0 ft.	00:12:26	MMM		M				<input type="checkbox"/>	9 /		3	ROCK SWALE 72 IN INSPECTION-AMH 'MH2'-AMH 'MH1'-MMM at 479.0 ft.JPG	
497.0 ft.	00:12:46	RMB					5	<input type="checkbox"/>	9 /		4	ROCK SWALE 72 IN INSPECTION-AMH 'MH2'-AMH 'MH1'-RMB at 497.0 ft.JPG	
500.8 ft.	00:13:07	RMB					5	<input type="checkbox"/>	9 /		4	ROCK SWALE 72 IN INSPECTION-AMH 'MH2'-AMH 'MH1'-RMB at 500.8 ft.JPG	
514.4 ft.	00:13:28	DSGV					5	<input type="checkbox"/>	6 /		2	ROCK SWALE 72 IN INSPECTION-AMH 'MH2'-AMH 'MH1'-DSGV at 514.4 ft.JPG	

## Observations

Distance	Video Ref.	PACP Code	Continuous	S/M/L	Value Inches (mm)		%	Joint	Circumferential Location		Rating	Image Ref.	Remarks
					1st	2nd			At/From	To			
521.3 ft.	00:13:46	DSGV					5	<input type="checkbox"/>	6 /		2	ROCK SWALE 72 IN INSPECTION-AMH 'MH2'-AMH 'MH1'-DSGV at 521.3 ft.JPG	
521.3 ft.	00:14:00	DR					5	<input type="checkbox"/>	/		4	ROCK SWALE 72 IN INSPECTION-AMH 'MH2'-AMH 'MH1'-DR at 521.3 ft.JPG	
526.2 ft.	00:14:27	RMB					5	<input type="checkbox"/>	9 /		4	ROCK SWALE 72 IN INSPECTION-AMH 'MH2'-AMH 'MH1'-RMB at 526.2 ft.JPG	
529.6 ft.	00:14:47	RPL	S05					<input type="checkbox"/>	/			ROCK SWALE 72 IN INSPECTION-AMH 'MH2'-AMH 'MH1'-RPL at 529.6 ft.JPG	CIPP
529.6 ft.	00:19:31	MMS	F01	S				<input type="checkbox"/>	5 / 7		2	ROCK SWALE 72 IN INSPECTION-AMH 'MH2'-AMH 'MH1'-MMS at 529.6 ft.JPG	
529.6 ft.	00:21:44	RFB	F04					<input type="checkbox"/>	9 / 3		2	ROCK SWALE 72 IN INSPECTION-AMH 'MH2'-AMH 'MH1'-RFB at 529.6 ft.JPG	
529.9 ft.	00:15:16	DFBR	S06				5	<input type="checkbox"/>	/		3	ROCK SWALE 72 IN INSPECTION-AMH 'MH2'-AMH 'MH1'-DFBR at 529.9 ft.JPG	
542.5 ft.	00:16:08	LFDL						<input type="checkbox"/>	6 / 7		3	ROCK SWALE 72 IN INSPECTION-AMH 'MH2'-AMH 'MH1'-LFDL at 542.5 ft.JPG	

## Observations

Distance	Video Ref.	PACP Code	Continuous	S/M/L	Value Inches (mm)		%	Joint	Circumferential Location		Rating	Image Ref.	Remarks
					1st	2nd			At/From	To			
545.6 ft.	00:16:37	DSGV					5	<input type="checkbox"/>	6 /		2	ROCK SWALE 72 IN INSPECTION-AMH 'MH2'-AMH 'MH1'-DSGV at 545.6 ft.JPG	
553.8 ft.	00:17:03	LFDL						<input type="checkbox"/>	6 /		3	ROCK SWALE 72 IN INSPECTION-AMH 'MH2'-AMH 'MH1'-LFDL at 553.8 ft.JPG	
553.9 ft.	00:17:27	RFB						<input type="checkbox"/>	12 /		2	ROCK SWALE 72 IN INSPECTION-AMH 'MH2'-AMH 'MH1'-RFB at 553.9 ft.JPG	
558.5 ft.	00:20:52	DFBR	F06				5	<input type="checkbox"/>	/		3	ROCK SWALE 72 IN INSPECTION-AMH 'MH2'-AMH 'MH1'-DFBR at 558.5 ft.JPG	
558.5 ft.	00:18:11	RPL	F05					<input type="checkbox"/>	/			ROCK SWALE 72 IN INSPECTION-AMH 'MH2'-AMH 'MH1'-RPL at 558.5 ft.JPG	CIPP
558.6 ft.	00:18:34	RFB	S07					<input type="checkbox"/>	9 / 3		2	ROCK SWALE 72 IN INSPECTION-AMH 'MH2'-AMH 'MH1'-RFB at 558.6 ft.JPG	
558.7 ft.	00:18:53	MB						<input type="checkbox"/>	12 /		4	ROCK SWALE 72 IN INSPECTION-AMH 'MH2'-AMH 'MH1'-MB at 558.7 ft.JPG	
558.7 ft.	00:19:02	DSGV	S08				5	<input type="checkbox"/>	6 /		2	ROCK SWALE 72 IN INSPECTION-AMH 'MH2'-AMH 'MH1'-DSGV at 558.7 ft.JPG	

## Observations

Distance	Video Ref.	PACP Code	Continuous	S/M/L	Value Inches (mm)		%	Joint	Circumferential Location		Rating	Image Ref.	Remarks
					1st	2nd			At/From	To			
558.7 ft.	00:19:16	MMM		M				<input type="checkbox"/>	8 /		3	ROCK SWALE 72 IN INSPECTION-AMH 'MH2'-AMH 'MH1'-MMM at 558.7 ft.JPG	
569.5 ft.	00:21:58	MMM		M				<input type="checkbox"/>	8 /		3	ROCK SWALE 72 IN INSPECTION-AMH 'MH2'-AMH 'MH1'-MMM at 569.5 ft.JPG	7' IN LENGTH
580.9 ft.	00:22:34	MMM	S09	M				<input type="checkbox"/>	8 /		3	ROCK SWALE 72 IN INSPECTION-AMH 'MH2'-AMH 'MH1'-MMM at 580.9 ft.JPG	
593.8 ft.	00:22:58	MML	S10	L				<input type="checkbox"/>	12 /		3	ROCK SWALE 72 IN INSPECTION-AMH 'MH2'-AMH 'MH1'-MML at 593.8 ft.JPG	BRICKS ARE SOUND
604.1 ft.	00:24:08	DB						<input type="checkbox"/>	12 /		3	ROCK SWALE 72 IN INSPECTION-AMH 'MH2'-AMH 'MH1'-DB at 604.1 ft.JPG	4' IN LENGTH 2" DISPLACEMENT
604.1 ft.	00:23:54	DSF	S11			5		<input type="checkbox"/>	6 /		2	ROCK SWALE 72 IN INSPECTION-AMH 'MH2'-AMH 'MH1'-DSF at 604.1 ft.JPG	
604.1 ft.	00:23:42	DSGV	F08			5		<input type="checkbox"/>	6 /		2	ROCK SWALE 72 IN INSPECTION-AMH 'MH2'-AMH 'MH1'-DSGV at 604.1 ft.JPG	

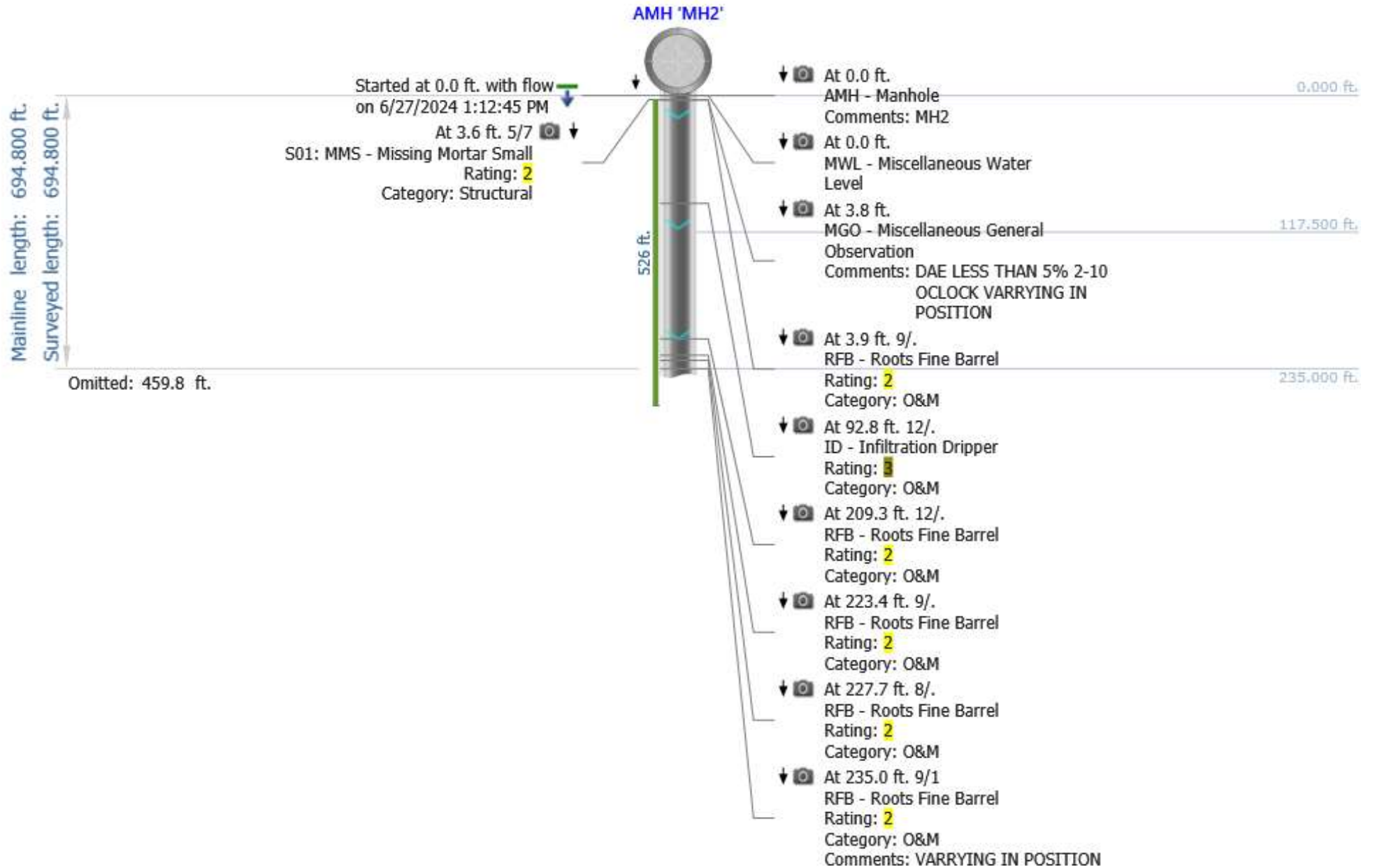


## Observations

Distance	Video Ref.	PACP Code	Continuous	S/M/L	Value Inches (mm)		%	Joint	Circumferential Location		Rating	Image Ref.	Remarks
					1st	2nd			At/From	To			
666.8 ft.	00:26:16	MMM	F09	M				<input type="checkbox"/>	8 /		3	ROCK SWALE 72 IN INSPECTION-AMH 'MH2'-AMH 'MH1'-MMM at 666.8 ft.JPG	
666.8 ft.	00:26:32	RFB	F07					<input type="checkbox"/>	9 / 3		2	ROCK SWALE 72 IN INSPECTION-AMH 'MH2'-AMH 'MH1'-RFB at 666.8 ft.JPG	
666.8 ft.	00:25:59	MML	F10	L				<input type="checkbox"/>	12 /		3	ROCK SWALE 72 IN INSPECTION-AMH 'MH2'-AMH 'MH1'-MML at 666.8 ft.JPG	
666.9 ft.	00:27:06	RPL						<input type="checkbox"/>	/			ROCK SWALE 72 IN INSPECTION-AMH 'MH2'-AMH 'MH1'-RPL at 666.9 ft.JPG	CAST IRON SLIP LINE
667.0 ft.	00:27:37	MSC			70.000			<input type="checkbox"/>	/			ROCK SWALE 72 IN INSPECTION-AMH 'MH2'-AMH 'MH1'-MSC at 667.0 ft.JPG	
676.8 ft.	00:28:00	MMC						<input type="checkbox"/>	/			ROCK SWALE 72 IN INSPECTION-AMH 'MH2'-AMH 'MH1'-MMC at 676.8 ft.JPG	RCP
677.1 ft.	00:28:13	MSC			72.000			<input type="checkbox"/>	/			ROCK SWALE 72 IN INSPECTION-AMH 'MH2'-AMH 'MH1'-MSC at 677.1 ft.JPG	

## Observations

Distance	Video Ref.	PACP Code	Continuous	S/M/L	Value Inches (mm)		%	Joint	Circumferential Location		Rating	Image Ref.	Remarks
					1st	2nd			At/From	To			
683.4 ft.	00:28:32	MGO						<input type="checkbox"/>	/			ROCK SWALE 72 IN INSPECTION-AMH 'MH2'-AMH 'MH1'-MGO at 683.4 ft.JPG	EVIDENCE OF SURCHARGE
694.0 ft.	00:29:02	DSF	F11				5	<input type="checkbox"/>	6 /	2		ROCK SWALE 72 IN INSPECTION-AMH 'MH2'-AMH 'MH1'-DSF at 694.0 ft.JPG	
694.8 ft.	00:29:26	AMH						<input type="checkbox"/>	/			ROCK SWALE 72 IN INSPECTION-AMH 'MH2'-AMH 'MH1'-AMH at 694.8 ft.JPG	MH1

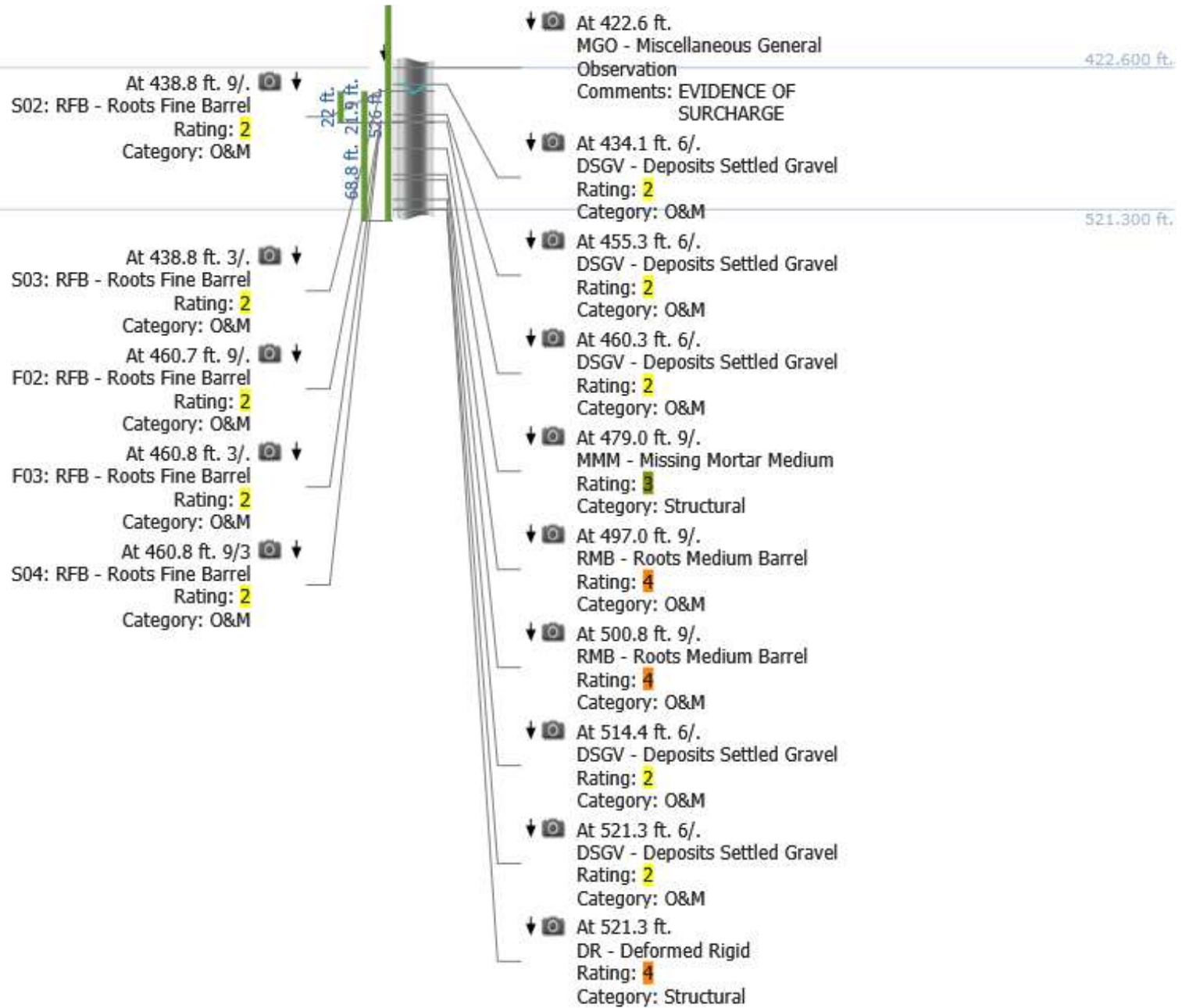


Mainline length: 694.800 ft.  
 Surveyed length: 694.800 ft.  
 Omitted: 244.7 ft.  
 Omitted: 272.2 ft.

526 ft.

- ↓  At 244.7 ft. 11/.  
 RFB - Roots Fine Barrel  
 Rating: 2  
 Category: O&M  
244.700 ft.
- ↓  At 249.9 ft. 8/.  
 RTB - Roots Tap Barrel  
 Rating: 3  
 Category: O&M  
333.650 ft.
- ↓  At 278.8 ft. 9/.  
 RFB - Roots Fine Barrel  
 Rating: 2  
 Category: O&M  
422.600 ft.
- ↓  At 291.7 ft. 10/.  
 RFB - Roots Fine Barrel  
 Rating: 2  
 Category: O&M
- ↓  At 301.9 ft. 7/5  
 RFB - Roots Fine Barrel  
 Rating: 2  
 Category: O&M  
 Comments: VARRYING IN POSITION
- ↓  At 309.5 ft.  
 MGO - Miscellaneous General  
 Observation  
 Comments: LEAF AT 12 EVIDENCE OF  
 SURCHARGE
- ↓  At 318.1 ft. 11/.  
 RFB - Roots Fine Barrel  
 Rating: 2  
 Category: O&M
- ↓  At 367.0 ft. 11/.  
 DB - Displaced Brick  
 Rating: 3  
 Category: Structural
- ↓  At 389.1 ft. 3/.  
 MML - Missing Mortar Large  
 Rating: 3  
 Category: Structural

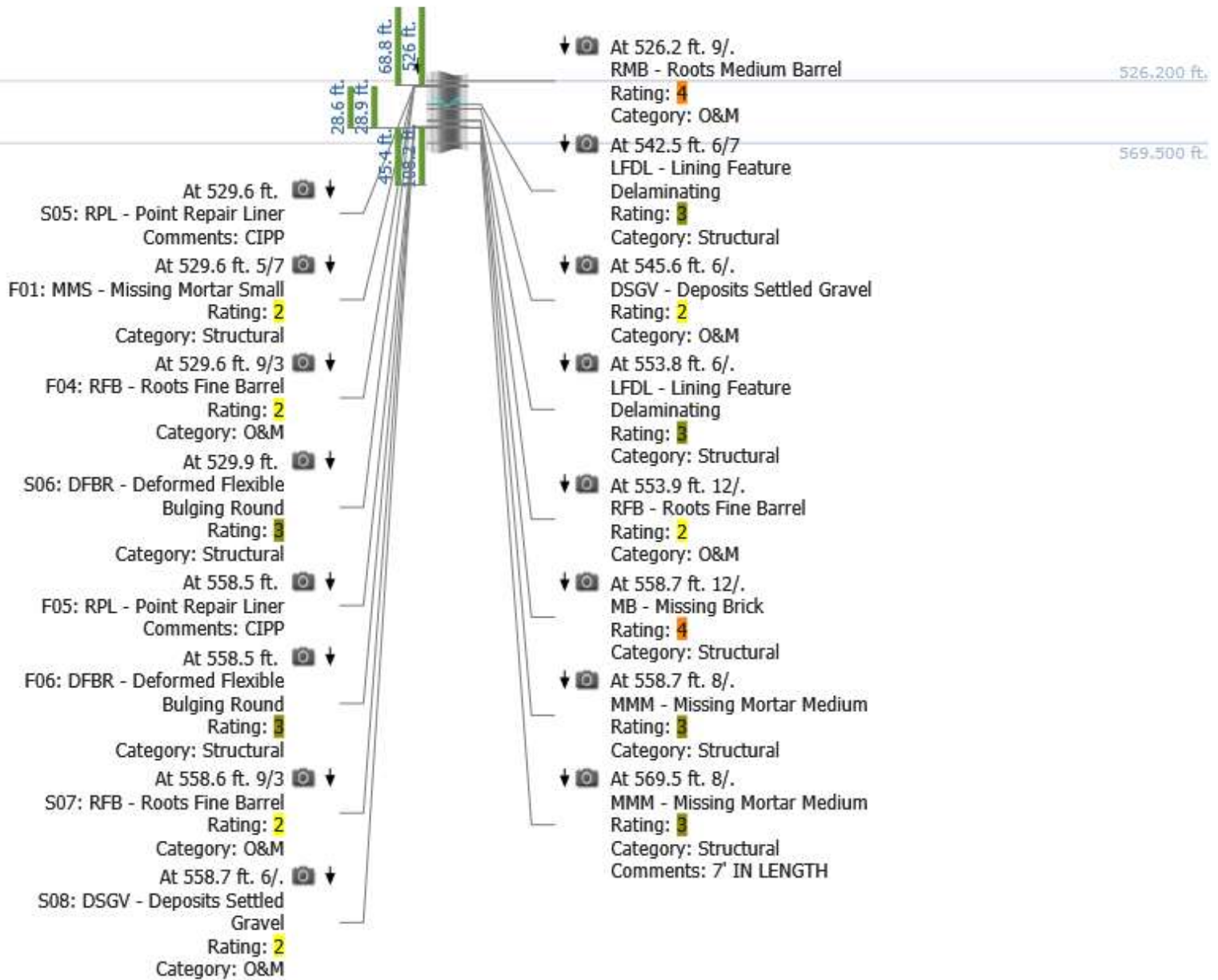
Mainline length: 694.800 ft.  
 Surveyed length: 694.800 ft.

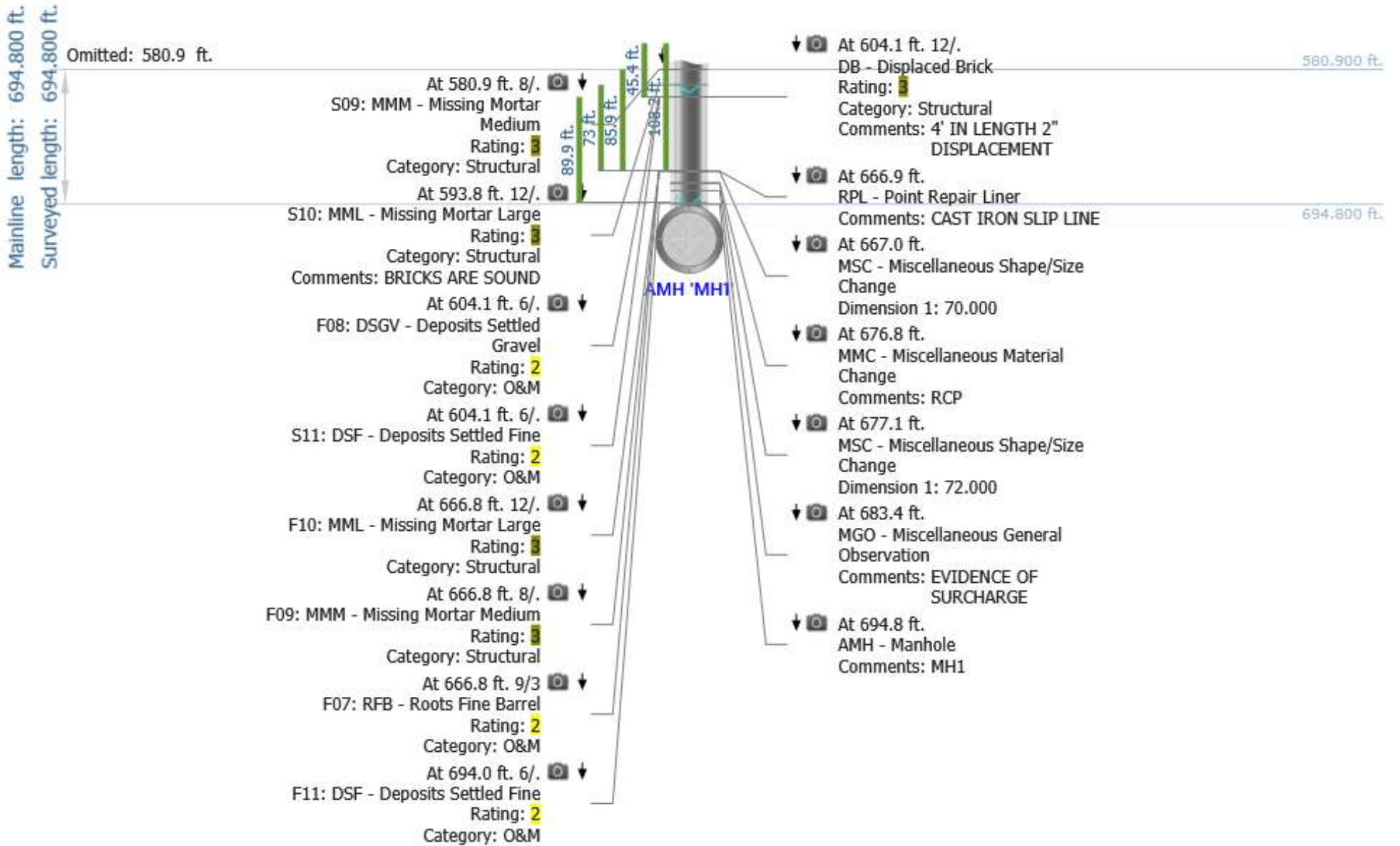


Mainline length: 694.800 ft.  
 Surveyed length: 694.800 ft.

Omitted: 526.2 ft.



Omitted: 125.3 ft.





**Some observations have distance greater than the pipe length**

---

Stopped at 694.9 ft. with flow   
on 6/27/2024 1:43:01 PM 



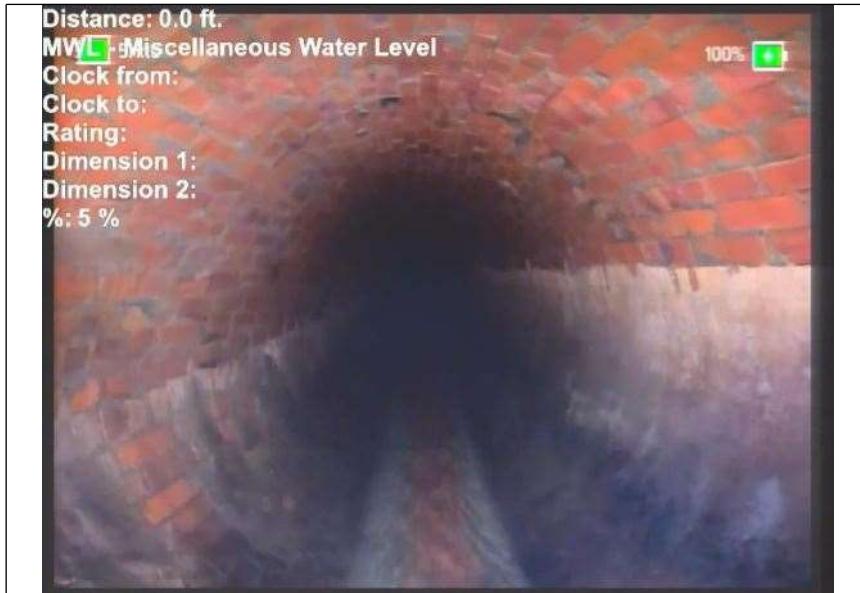
# Photos



At: 0 ft. AMH - Manhole  
Joint: No MH2



At: 0 ft. AMH - Manhole  
Joint: No MH2

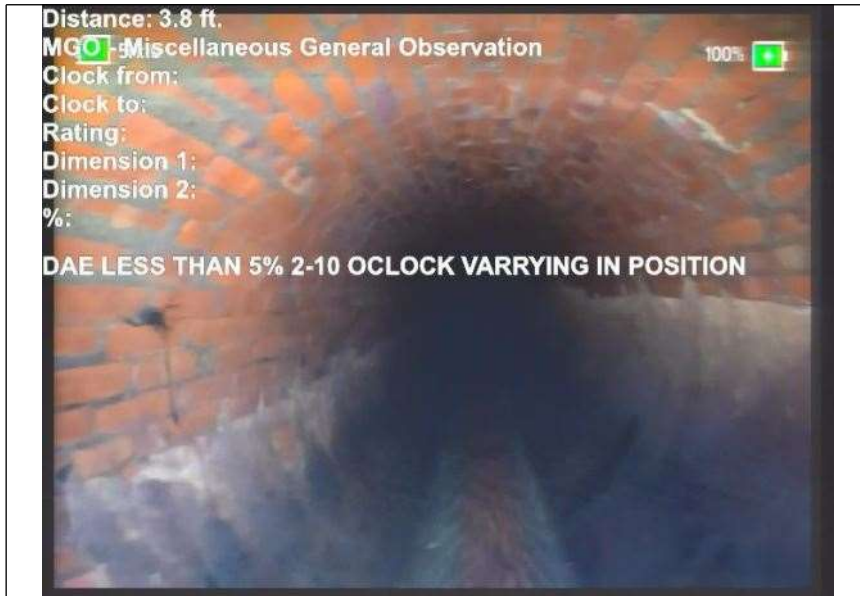


At: 0 ft. MWL - Miscellaneous Water Level  
Joint: No 5 %



At: 3. 5999999046  
3257 ft. 5/7  
Joint: No

## Photos



At: 3. MGO - Miscellaneous General Observation  
7999999523  
1628 ft.  
Joint: No DAE LESS THAN 5% 2-10 OCLOCK VARRYING IN POSITION



At: 3. RFB - Roots Fine Barrel  
9000000953  
6743 ft. 9/.  
Joint: No

## Photos



At: 92. ID - Infiltration Dropper  
8000030517  
578 ft. 12/.

Joint: No



At: 209. RFB - Roots Fine Barrel  
3000030517  
58 ft. 12/.

Joint: No

## Photos



At: 223. RFB - Roots Fine Barrel  
3999938964  
84 ft. 9/.

Joint: No



At: 227. RFB - Roots Fine Barrel  
6999969482  
42 ft. 8/.

Joint: No



At: 235 ft. 9/1 RFB - Roots Fine Barrel

Joint: No VARRYING IN POSITION

## Photos



At: 244. RFB - Roots Fine Barrel  
6999969482  
42 ft. 11/.

Joint: No



At: 249. RTB - Roots Tap Barrel  
8999938964  
84 ft. 8/.

Joint: No 5 %

## Photos



At: 278. RFB - Roots Fine Barrel  
7999877929  
69 ft. 9/.

Joint: No



At: 291. RFB - Roots Fine Barrel  
7000122070  
31 ft. 10/.

Joint: No

## Photos



At: 301. RFB - Roots Fine Barrel  
8999938964  
84 ft. 7/5  
Joint: No VARRYING IN POSITION



At: 309.5 ft. MGO - Miscellaneous General Observation  
Joint: No LEAF AT 12 EVIDENCE OF SURCHARGE

## Photos



At: 318. RFB - Roots Fine Barrel  
1000061035  
16 ft. 11/.  
Joint: No



At: 367 ft. 11/. DB - Displaced Brick  
Joint: No



## Photos



At: 389. MML - Missing Mortar Large  
1000061035  
16 ft. 3/.

Joint: No



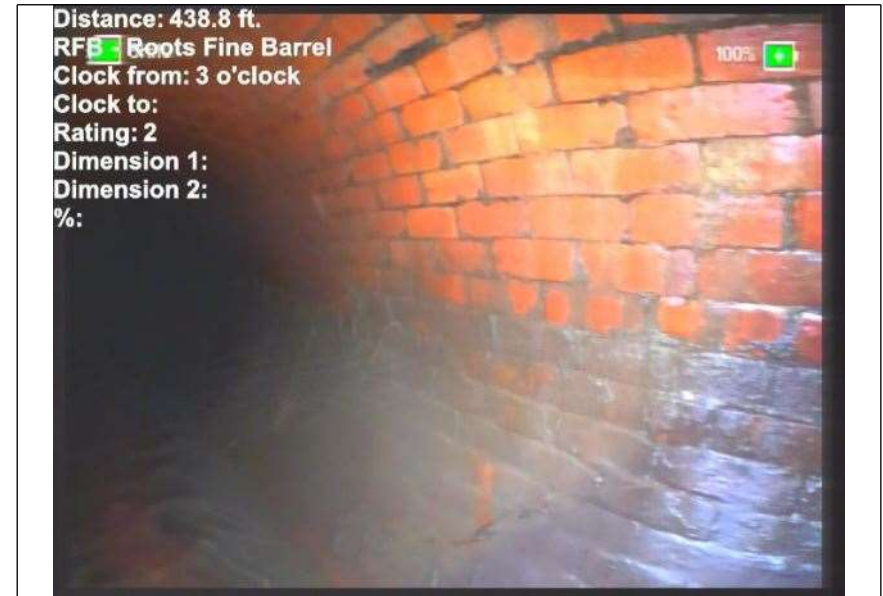
At: 422. MGO - Miscellaneous General Observation  
6000061035  
16 ft.

Joint: No EVIDENCE OF SURCHARGE

## Photos



At: 434. DSGV - Deposits Settled Gravel  
1000061035  
16 ft. 6/.  
Joint: No 5 %



At: 438. RFB - Roots Fine Barrel  
7999877929  
69 ft. 3/.  
Joint: No

## Photos



At: 438. RFB - Roots Fine Barrel  
7999877929  
69 ft. 9/.

Joint: No



At: 455. DSGV - Deposits Settled Gravel  
2999877929  
69 ft. 6/.

Joint: No 5 %

## Photos



At: 460. DSGV - Deposits Settled Gravel  
2999877929  
69 ft. 6/.  
Joint: No 5 %



At: 460. RFB - Roots Fine Barrel  
7000122070  
31 ft. 9/.  
Joint: No

## Photos



At: 460. RFB - Roots Fine Barrel  
7999877929  
69 ft. 3/.

Joint: No



At: 460. RFB - Roots Fine Barrel  
7999877929  
69 ft. 9/3

Joint: No



At: 479 ft. 9/. MMM - Missing Mortar Medium

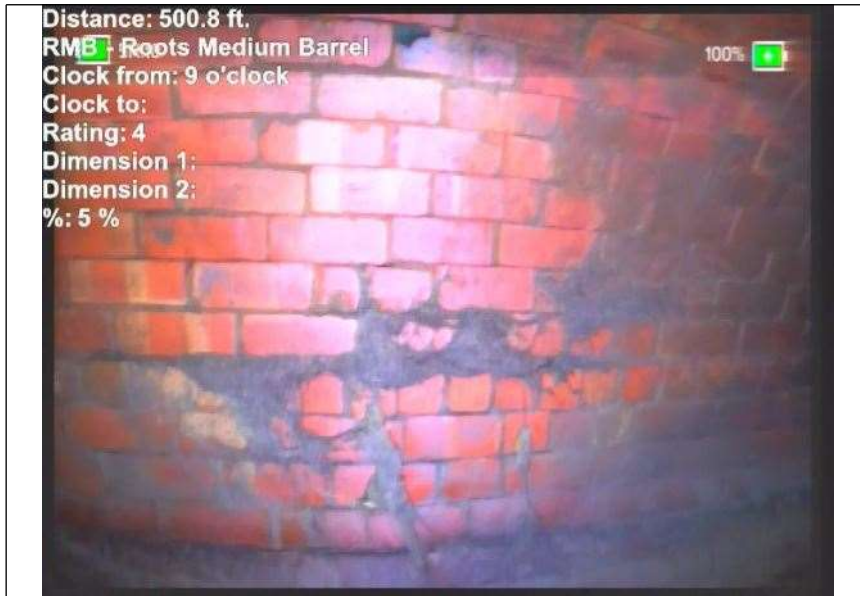
Joint: No



At: 497 ft. 9/. RMB - Roots Medium Barrel

Joint: No 5 %

## Photos



At: 500. RMB - Roots Medium Barrel  
7999877929  
69 ft. 9/.  
Joint: No 5 %



At: 514. DSGV - Deposits Settled Gravel  
4000244140  
63 ft. 6/.  
Joint: No 5 %

## Photos



At: 521. DSGV - Deposits Settled Gravel  
2999877929  
69 ft. 6/.  
Joint: No 5 %



At: 521. DR - Deformed Rigid  
2999877929  
69 ft.  
Joint: No 5 %

## Photos



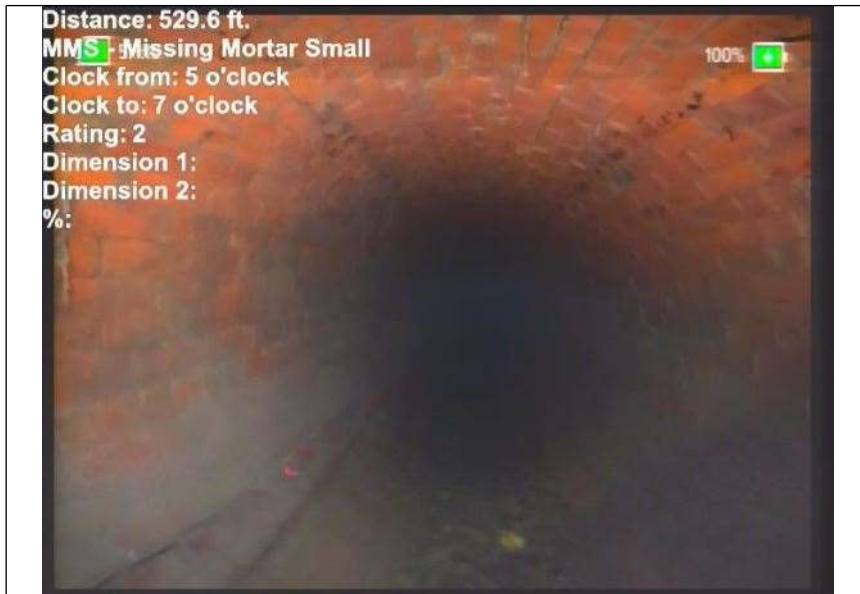
At: 526. RMB - Roots Medium Barrel  
2000122070  
31 ft. 9/.

Joint: No 5 %



At: 529. RPL - Point Repair Liner  
5999755859  
38 ft.

Joint: No CIPP



At: 529.6 ft. 5/7 MMS - Missing Mortar Small

Joint: No



At: 529.6 ft. 9/3 RFB - Roots Fine Barrel

Joint: No



## Photos



At: 529.9000244140 DFBR - Deformed Flexible Bulging Round  
63 ft.

Joint: No 5 %



At: 542.5 ft. 6/7 LFDL - Lining Feature Delaminating  
Joint: No

## Photos



At: 545. DSGV - Deposits Settled Gravel  
5999755859  
38 ft. 6/.

Joint: No 5 %



At: 553. LFDL - Lining Feature Delaminating  
7999877929  
69 ft. 6/.

Joint: No

## Photos



At: 553. RFB - Roots Fine Barrel  
9000244140  
63 ft. 12/.

Joint: No



At: 558.5 ft. DFBR - Deformed Flexible Bulging Round  
Joint: No 5 %



At: 558.5 ft. RPL - Point Repair Liner  
Joint: No CIPP

## Photos



At: 558. RFB - Roots Fine Barrel  
5999755859  
38 ft. 9/3

Joint: No



At: 558. MB - Missing Brick  
7000122070  
31 ft. 12/.

Joint: No

## Photos



At: 558. 7000122070  
DSGV - Deposits Settled Gravel  
31 ft. 6/.

Joint: No 5 %



At: 558. 7000122070  
MMM - Missing Mortar Medium  
31 ft. 8/.

Joint: No



At: 569.5 ft. 8/. 7000122070  
MMM - Missing Mortar Medium

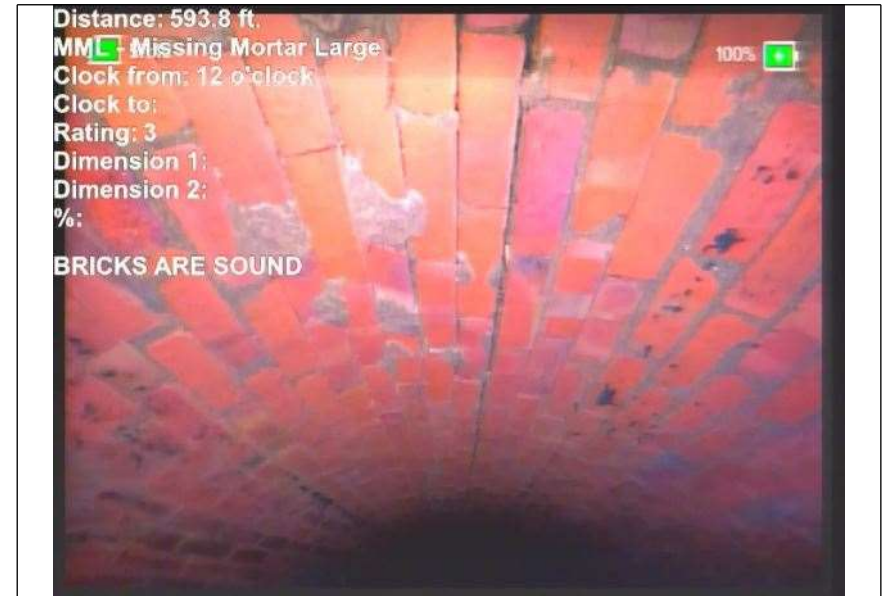
Joint: No 7' IN LENGTH

## Photos



At: 580. MMM - Missing Mortar Medium  
9000244140  
63 ft. 8/.

Joint: No



At: 593. MML - Missing Mortar Large  
7999877929  
69 ft. 12/.

Joint: No BRICKS ARE SOUND

## Photos



At: 604. DB - Displaced Brick  
0999755859  
38 ft. 12/.

Joint: No 4' IN LENGTH 2" DISPLACEMENT



At: 604. DSF - Deposits Settled Fine  
0999755859  
38 ft. 6/.

Joint: No 5 %

## Photos



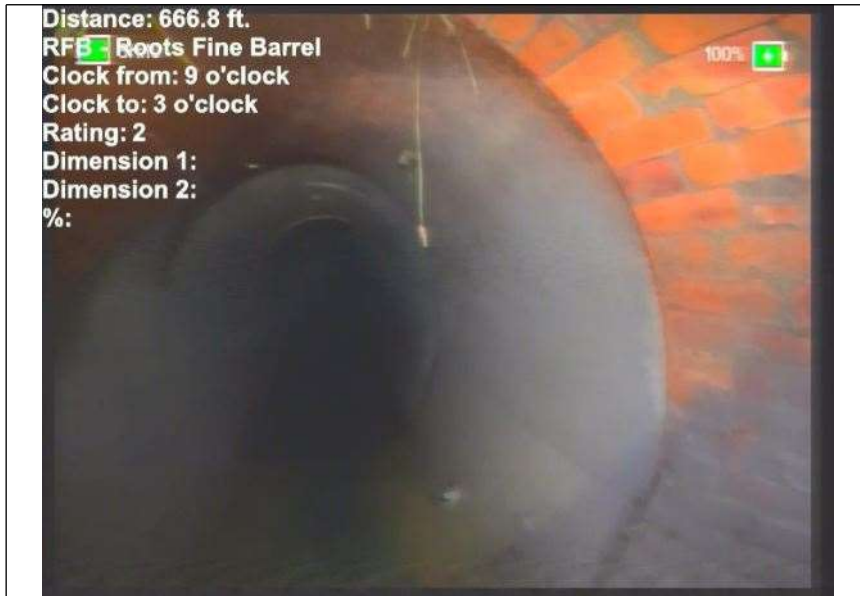
At: 604. DSGV - Deposits Settled Gravel  
0999755859  
38 ft. 6/.  
Joint: No 5 %



At: 666. MMM - Missing Mortar Medium  
7999877929  
69 ft. 8/.  
Joint: No



## Photos



At: 666. RFB - Roots Fine Barrel  
7999877929  
69 ft. 9/3

Joint: No



At: 666. MML - Missing Mortar Large  
7999877929  
69 ft. 12/.

Joint: No

## Photos



At: 666. 9000244140  
RPL - Point Repair Liner  
63 ft.

Joint: No CAST IRON SLIP LINE



At: 667 ft. MSC - Miscellaneous Shape/Size Change

Joint: No

## Photos



At: 676. MMC - Miscellaneous Material Change  
7999877929  
69 ft.

Joint: No RCP



At: 677. MSC - Miscellaneous Shape/Size Change  
0999755859  
38 ft.

Joint: No

## Photos



At: 683.4000244140 MGO - Miscellaneous General Observation  
63 ft.

Joint: No EVIDENCE OF SURCHARGE



At: 694 ft. 6/. DSF - Deposits Settled Fine

Joint: No 5 %

## Photos



At: 694. AMH - Manhole  
7999877929  
69 ft.

Joint: No MH1