

CITY OF LAKESIDE PARK

KENTON COUNTY, KENTUCKY

2025 SIDEWALK
SPOT REPLACEMENT

23028603-01

CITY OF LAKESIDE PARK OFFICIALS

MAYOR

PAUL MARKGRAF

CITY CLERK

TERESA BRUCK

CITY COUNCIL MEMBERS

TOM BERNHEIMER

DENNIS LANDWEHR

CASSI SCHABELL

MARY ANN THAMAN

BRIAN WAITE

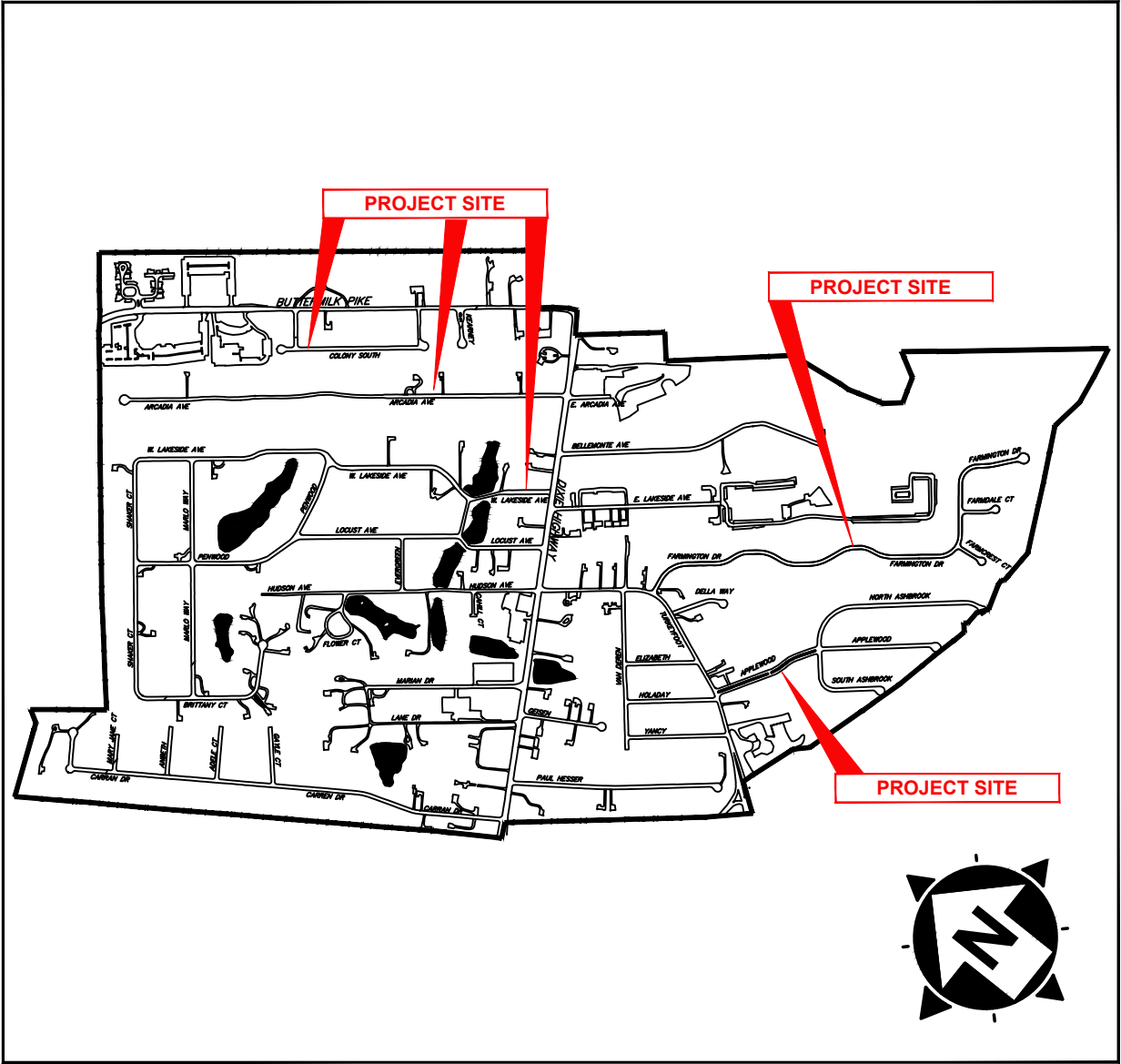
DAVE WOLFER

CITY ATTORNEY

GREG VOSS

PUBLIC WORKS DIRECTOR

STEVE GREER



VICINITY MAP

N.T.S

K.T.C SPECIFICATIONS

THE LATEST STANDARD SPECIFICATIONS OF THE KENTUCKY TRANSPORTATION CABINET, INCLUDING CHANGES AND SUPPLEMENTAL SPECIFICATIONS THERETO AND CITY OF LAKESIDE PARK ENGINEERING DEPARTMENT REQUIREMENTS SHALL GOVERN THIS IMPROVEMENT.

SOURCE OF BOUNDARY INFORMATION

THE BOUNDARY INFORMATION SHOWN ON THESE PLANS IS BASED UPON NORTHERN KENTUCKY AREA PLANNING COMMISSION G.I.S. MAPPING AND DOES NOT REPRESENT AN ACTUAL FIELD BOUNDARY SURVEY BY VERDANTAS, LLC.

INDEX OF SHEETS

PAGE NO.	DWG NAME	SHEET TITLE
1	C1	TITLE SHEET
2	C2	DETAILS 1
3	C3	COLONY SOUTH
4	C4	ARCADIA AVE
5	C5	ARCADIA AVE
6	C6	ARCADIA AVE
7	C7	WEST LAKESIDE AVE
8	C8	FARMINGTON DRIVE
9	C9	FARMINGTON DRIVE
10	C10	FARMINGTON DRIVE
11	C11	FARMINGTON DRIVE
12	C12	FARMINGTON DRIVE
13	C13	APPLEWOOD DRIVE

HATCH LEGEND

4" CONCRETE SIDEWALK REPLACEMENT PER KENTON COUNTY SUBDIVISION REGULATIONS



6" CONCRETE DRIVEWAY REPLACEMENT PER KENTON COUNTY SUBDIVISION REGULATIONS



verdantas

2161 CHAMBER CENTER DRIVE
FORT MITCHELL, KENTUCKY 41017
TEL. (859) 525-0544
WWW.VERDANTAS.COM

ISSUED FOR:	BID
ISSUE DATE:	2/20/2025
SCALE:	
DESIGNED BY:	MHEL
DRAWN BY:	AWAL
CHECKED BY:	MHEL

2025 SIDEWALK SPOT
REPLACEMENT
- CITY OF LAKESIDE PARK, KY 41017 -

TITLE SHEET

PROJECT NO.

23028603-01

DISCIPLINE

CIVIL

SHEET NAME

C1

SHEET

1

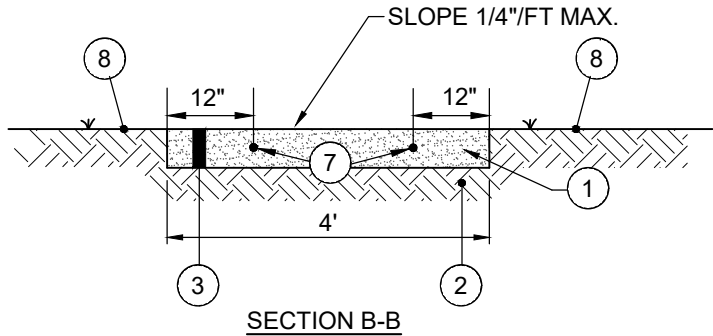
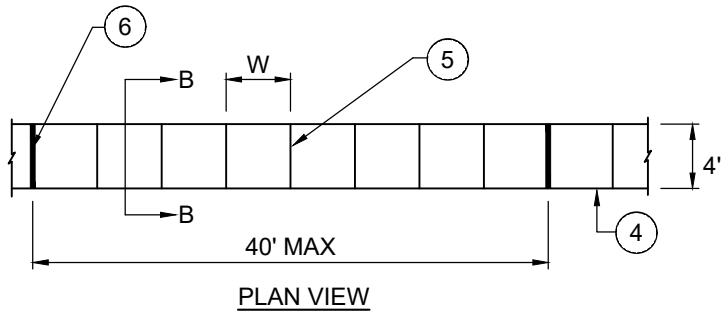
OF

13

MARTIN P. HELLMANN

P.E. #27046

H:\2023\23028603\DWG\BASE\23028603 - C-BASE - SIDEWALK.DWG - C2 - 2/12/2025 4:09:30 PM - ANDREW WALSH



- 1 SAWCUT AND REMOVE EXISTING SIDEWALK
- 2 ITEM 207 - COMPACTED SUBGRADE (INCIDENTAL TO CONCRETE SIDEWALK)
- 3 ITEM SPL - 4" CONCRETE SIDEWALK REPLACEMENT PER KENTON COUNTY SUBDIVISION REGULATIONS
- 3 ITEM SPL - 6" CONCRETE DRIVEWAY REPLACEMENT PER KENTON COUNTY SUBDIVISION REGULATIONS
- 4 TOOLED EDGE
- 5 TOOLED CONTRACTION JOINT
- 6 1/2" PREMOLDED EXPANSION JOINT
- 7 5/8" DIA. DOWELS 18" LONG - DRILL 9" MIN. INTO EXIST. CURB
- 8 ITEM SPL - YARD RESTORATION (4" TOPSOIL, SEED AND MULCH) - INCIDENTAL TO SIDEWALK AND DRIVEWAY REPLACEMENT



CONCRETE SIDEWALK REPLACEMENT DETAIL

verdantas

2161 CHAMBER CENTER DRIVE
FORT MITCHELL, KENTUCKY 41017
TEL. (859) 525-0544
WWW.VERDANTAS.COM

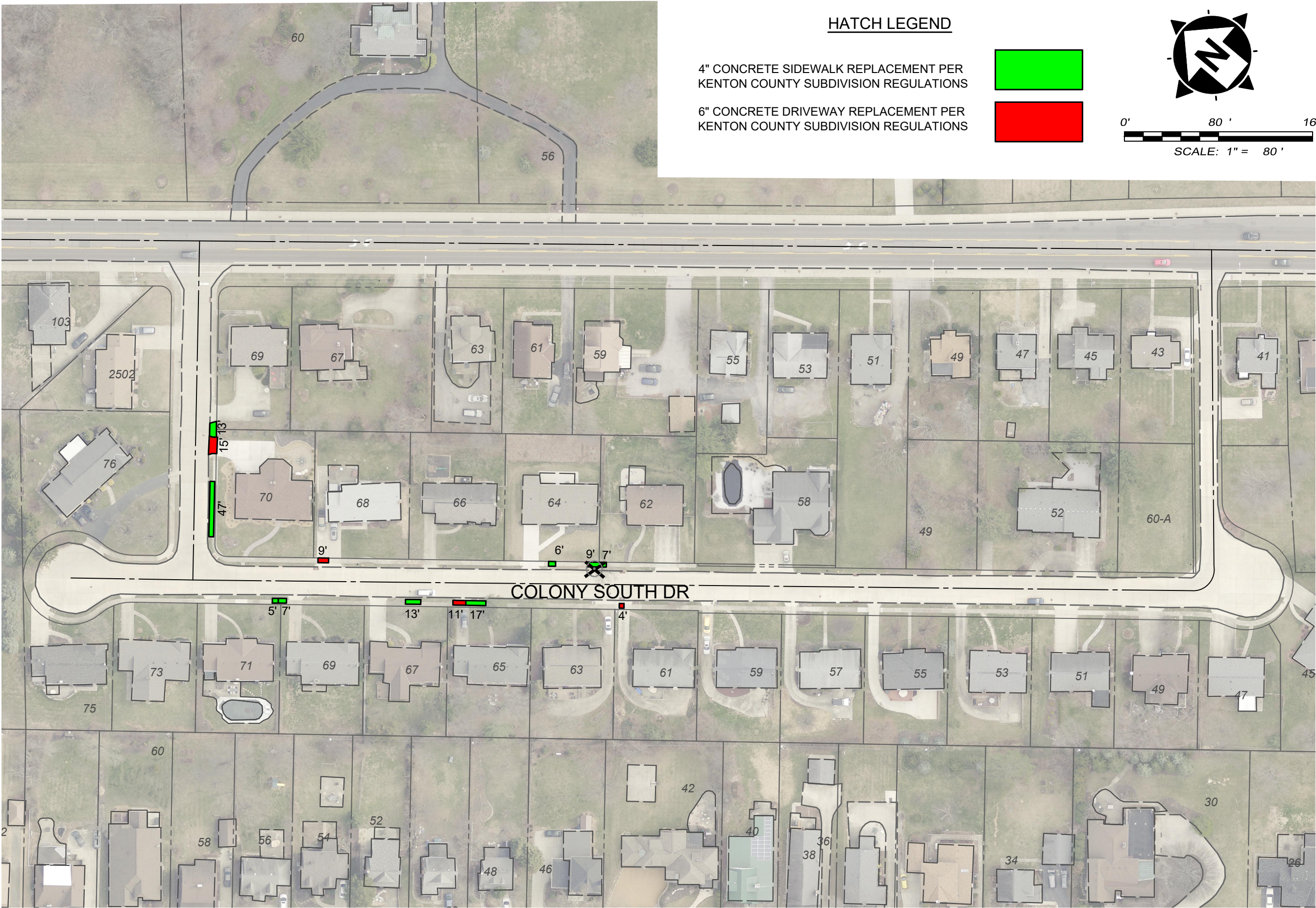
ISSUED FOR:	BID
ISSUE DATE:	2/20/2025
SCALE:	AS SHOWN
DESIGNED BY:	MHEL
DRAWN BY:	AWAL
CHECKED BY:	MHEL

2025 SIDEWALK SPOT REPLACEMENT
- CITY OF LAKESIDE PARK, KY 41017 -

DETAIL SHEET

PROJECT NO.	
23028603-01	
DISCIPLINE	
CIVIL	
SHEET NAME	
C2	
SHEET	OF
2	13

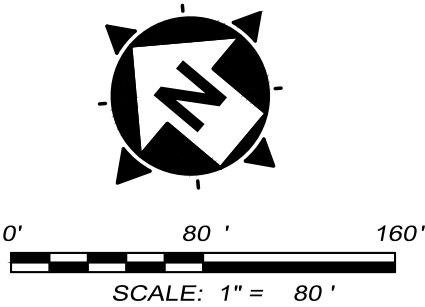
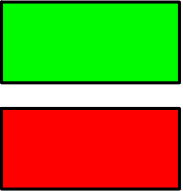
H:\2023\23028603\DWG\BASE\23028603_C-BASE_SIDEWALK.DWG - C3 - 2/12/2025 4:39:35 PM - ANDREW WALSH



HATCH LEGEND

4" CONCRETE SIDEWALK REPLACEMENT PER
KENTON COUNTY SUBDIVISION REGULATIONS

6" CONCRETE DRIVEWAY REPLACEMENT PER
KENTON COUNTY SUBDIVISION REGULATIONS



2025 SIDEWALK SPOT
REPLACEMENT
- CITY OF LAKESIDE PARK, KY 41017 -

COLONY SOUTH

ISSUED FOR:	BID
ISSUE DATE:	2/20/2025
SCALE:	1" = 80'
DESIGNED BY:	MHEL
DRAWN BY:	AWAL
CHECKED BY:	MHEL

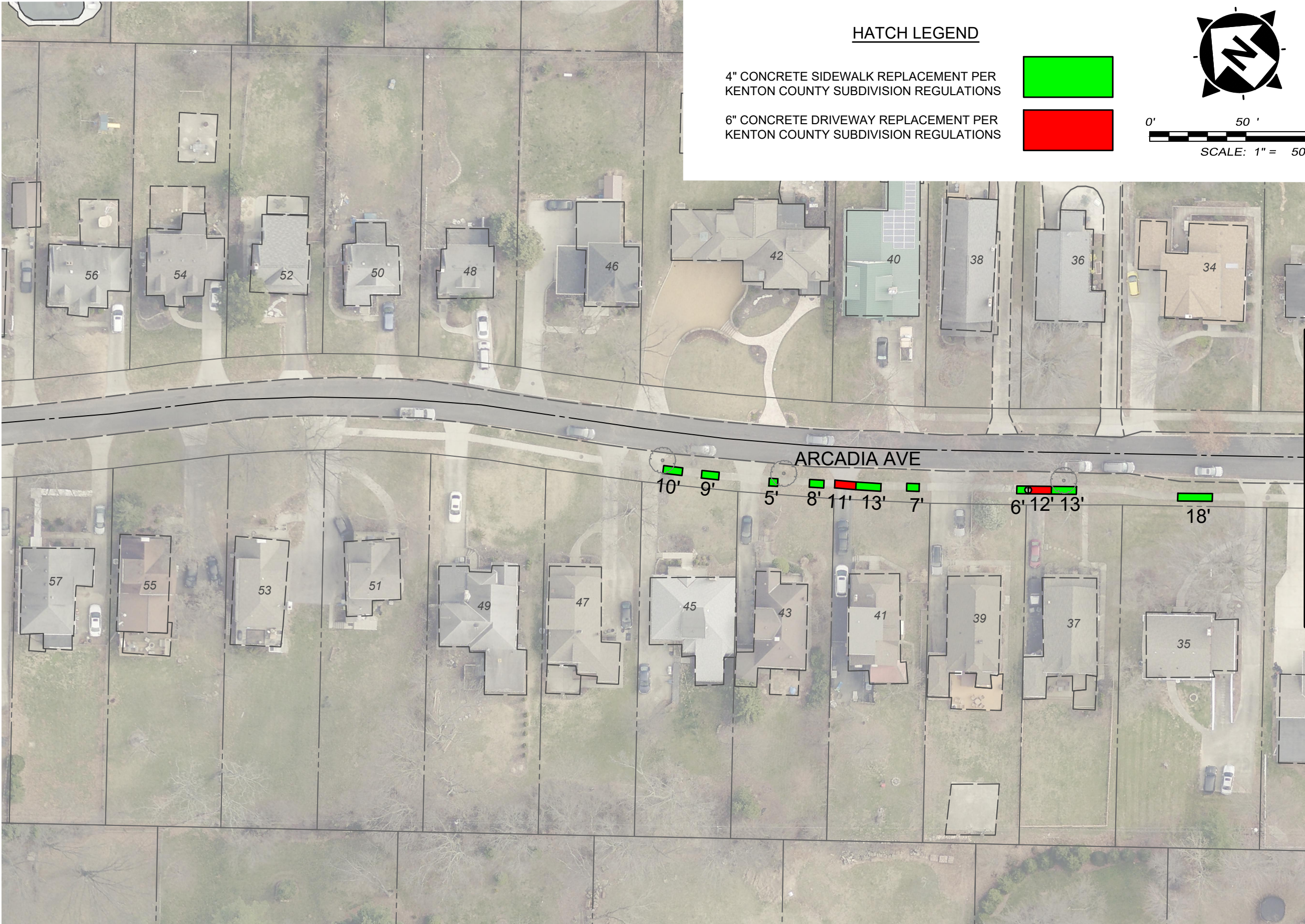
PROJECT NO. 23028603-01	
DISCIPLINE CIVIL	
SHEET NAME C3	
SHEET 3	OF 13

verdantas

2161 CHAMBER CENTER DRIVE
FORT MITCHELL, KENTUCKY 41017
TEL. (859) 525-0544
WWW.VERDANTAS.COM

** QUANTITIES AND LOCATIONS GIVEN ARE APPROXIMATE. ACTUAL LIMITS OF REPLACEMENT TO BE MARKED IN THE FIELD BY THE OWNER PRIOR TO CONSTRUCTION. SECTIONS MAY BE ADDED OR DELETED FROM WHAT IS SHOWN ON THE PLANS. FINAL PAYMENT WILL BE MADE AT THE PROVIDED UNIT PRICE FOR EACH ITEM BASED ON THE QUANTITY ACTUALLY COMPLETED. **

H:\2023\23028603\DWG\BASE\23028603_C4_212223_4:39:35 PM - ANDREW WALSH



** QUANTITIES AND LOCATIONS GIVEN ARE APPROXIMATE. ACTUAL LIMITS OF REPLACEMENT TO BE MARKED IN THE FIELD BY THE OWNER PRIOR TO CONSTRUCTION. SECTIONS MAY BE ADDED OR DELETED FROM WHAT IS SHOWN ON THE PLANS. FINAL PAYMENT WILL BE MADE AT THE PROVIDED UNIT PRICE FOR EACH ITEM BASED ON THE QUANTITY ACTUALLY COMPLETED. **

verdantas

2161 CHAMBER CENTER DRIVE
FORT MITCHELL, KENTUCKY 41017
TEL. (859) 525-0544
WWW.VERDANTAS.COM

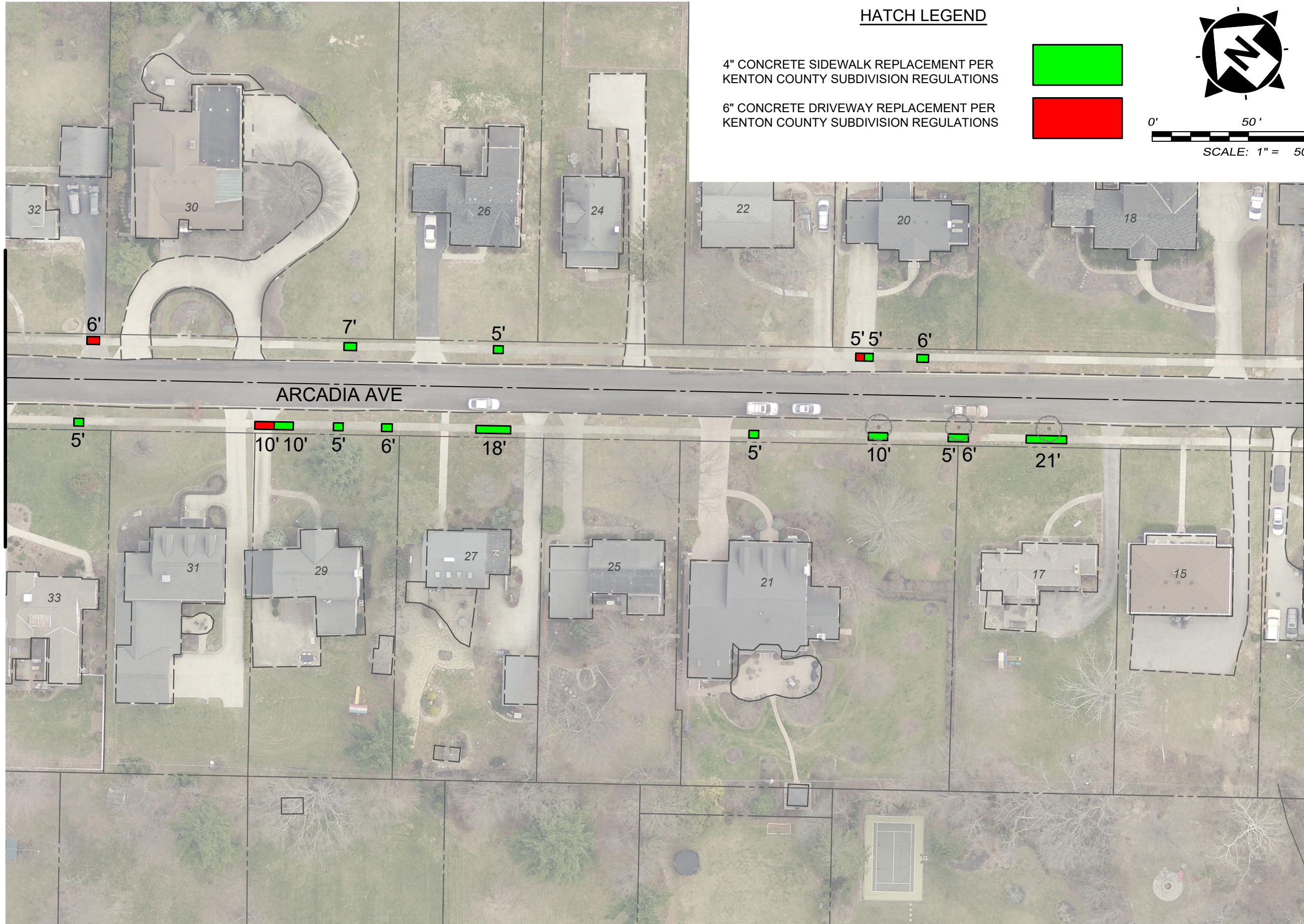
ISSUED FOR:	BID
ISSUE DATE:	2/20/2025
SCALE:	1" = 50'
DESIGNED BY:	MHEL
DRAWN BY:	AWAL
CHECKED BY:	MHEL

**2025 SIDEWALK SPOT
REPLACEMENT**
- CITY OF LAKESIDE PARK, KY 41017 -
ARCADIA AVE

PROJECT NO. 23028603-01	
DISCIPLINE CIVIL	
SHEET NAME C4	
SHEET 4	OF 13

H:\2023\23028603\DWG\BASE\23028603_C5-21\230235-430.30.PLT - ANDREW WALSH

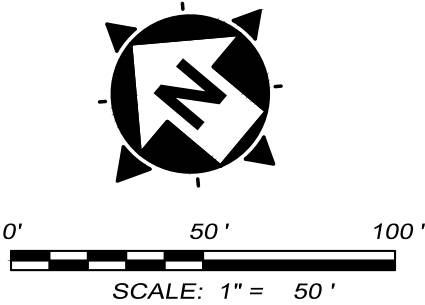
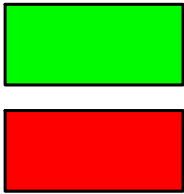
MATCH LINE "A"



HATCH LEGEND

4" CONCRETE SIDEWALK REPLACEMENT PER KENTON COUNTY SUBDIVISION REGULATIONS

6" CONCRETE DRIVEWAY REPLACEMENT PER KENTON COUNTY SUBDIVISION REGULATIONS



MATCH LINE "B"

2025 SIDEWALK SPOT REPLACEMENT
- CITY OF LAKESIDE PARK, KY 41017 -

ARCADIA AVE

PROJECT NO.	
23028603-01	
DISCIPLINE	
CIVIL	
SHEET NAME	
C5	
SHEET	OF
5	13

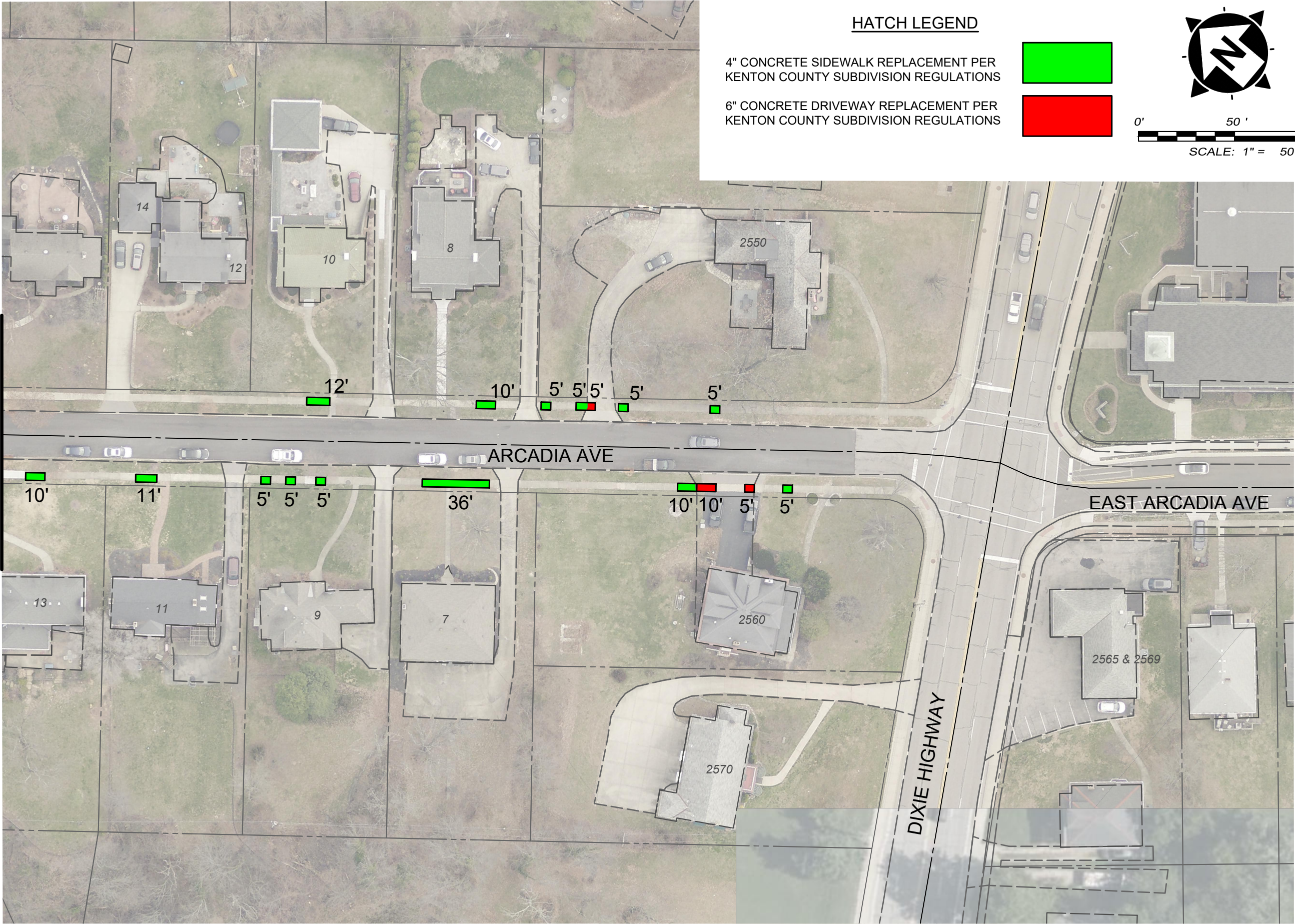
ISSUED FOR:	BID
ISSUE DATE:	2/20/2025
SCALE:	1" = 50'
DESIGNED BY:	MHEL
DRAWN BY:	AWAL
CHECKED BY:	MHEL

2161 CHAMBER CENTER DRIVE
FORT MITCHELL, KENTUCKY 41017
TEL: (859) 525-0544
WWW.VERDANTAS.COM

** QUANTITIES AND LOCATIONS GIVEN ARE APPROXIMATE. ACTUAL LIMITS OF REPLACEMENT TO BE MARKED IN THE FIELD BY THE OWNER PRIOR TO CONSTRUCTION. SECTIONS MAY BE ADDED OR DELETED FROM WHAT IS SHOWN ON THE PLANS. FINAL PAYMENT WILL BE MADE AT THE PROVIDED UNIT PRICE FOR EACH ITEM BASED ON THE QUANTITY ACTUALLY COMPLETED. **

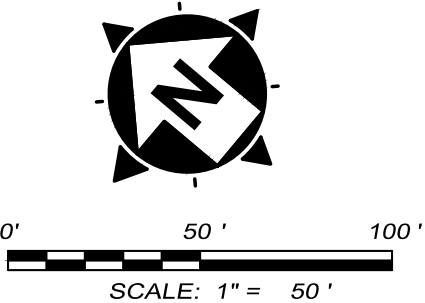
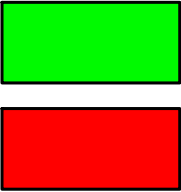
H:\2025\23028603\DWG\BASE\23028603_C6-2122025-439.35.PLT - ANDREW WALSH

MATCH LINE "B"



HATCH LEGEND

- 4" CONCRETE SIDEWALK REPLACEMENT PER KENTON COUNTY SUBDIVISION REGULATIONS
- 6" CONCRETE DRIVEWAY REPLACEMENT PER KENTON COUNTY SUBDIVISION REGULATIONS



2025 SIDEWALK SPOT
REPLACEMENT
- CITY OF LAKESIDE PARK, KY 41017 -

ARCADIA AVE

ISSUED FOR:	BID
ISSUE DATE:	2/20/2025
SCALE:	1" = 50'
DESIGNED BY:	MHEL
DRAWN BY:	AWAL
CHECKED BY:	MHEL

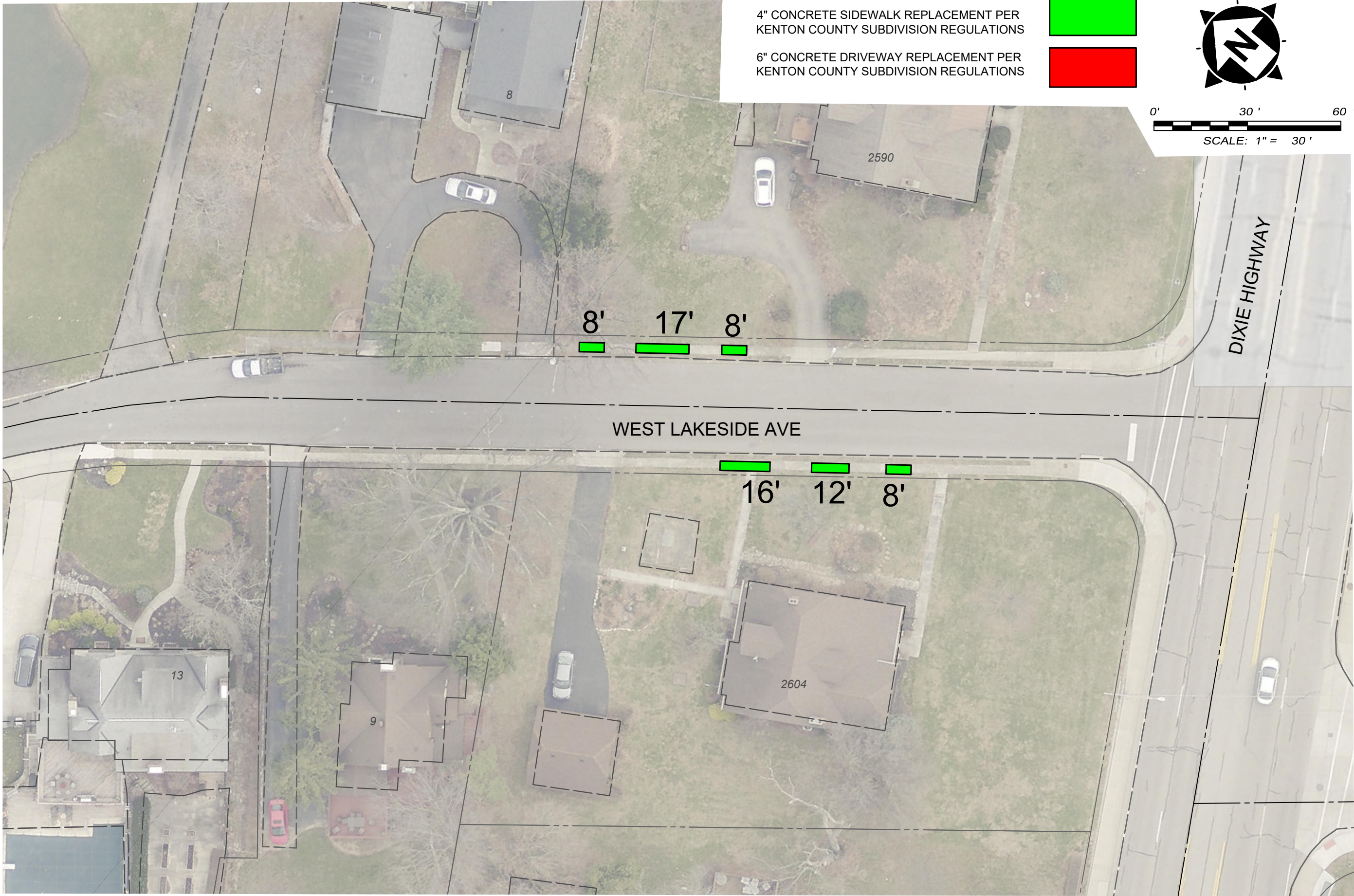
PROJECT NO. 23028603-01	
DISCIPLINE CIVIL	
SHEET NAME C6	
SHEET 6	OF 13

verdantas

2161 CHAMBER CENTER DRIVE
FORT MITCHELL, KENTUCKY 41017
TEL. (859) 525-0544
WWW.VERDANTAS.COM

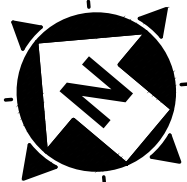
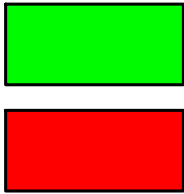
** QUANTITIES AND LOCATIONS GIVEN ARE APPROXIMATE. ACTUAL LIMITS OF REPLACEMENT TO BE MARKED IN THE FIELD BY THE OWNER PRIOR TO CONSTRUCTION. SECTIONS MAY BE ADDED OR DELETED FROM WHAT IS SHOWN ON THE PLANS. FINAL PAYMENT WILL BE MADE AT THE PROVIDED UNIT PRICE FOR EACH ITEM BASED ON THE QUANTITY ACTUALLY COMPLETED. **

H:\2023\23028603\DWG\BASE\23028603_C-BASE_SIDEWALK.DWG - CT - 2/12/2025 4:39:35 PM - ANDREW WALSH



HATCH LEGEND

- 4" CONCRETE SIDEWALK REPLACEMENT PER KENTON COUNTY SUBDIVISION REGULATIONS
- 6" CONCRETE DRIVEWAY REPLACEMENT PER KENTON COUNTY SUBDIVISION REGULATIONS



0' 30' 60'
SCALE: 1" = 30'

2025 SIDEWALK SPOT REPLACEMENT
- CITY OF LAKESIDE PARK, KY 41017 -
WEST LAKESIDE AVE

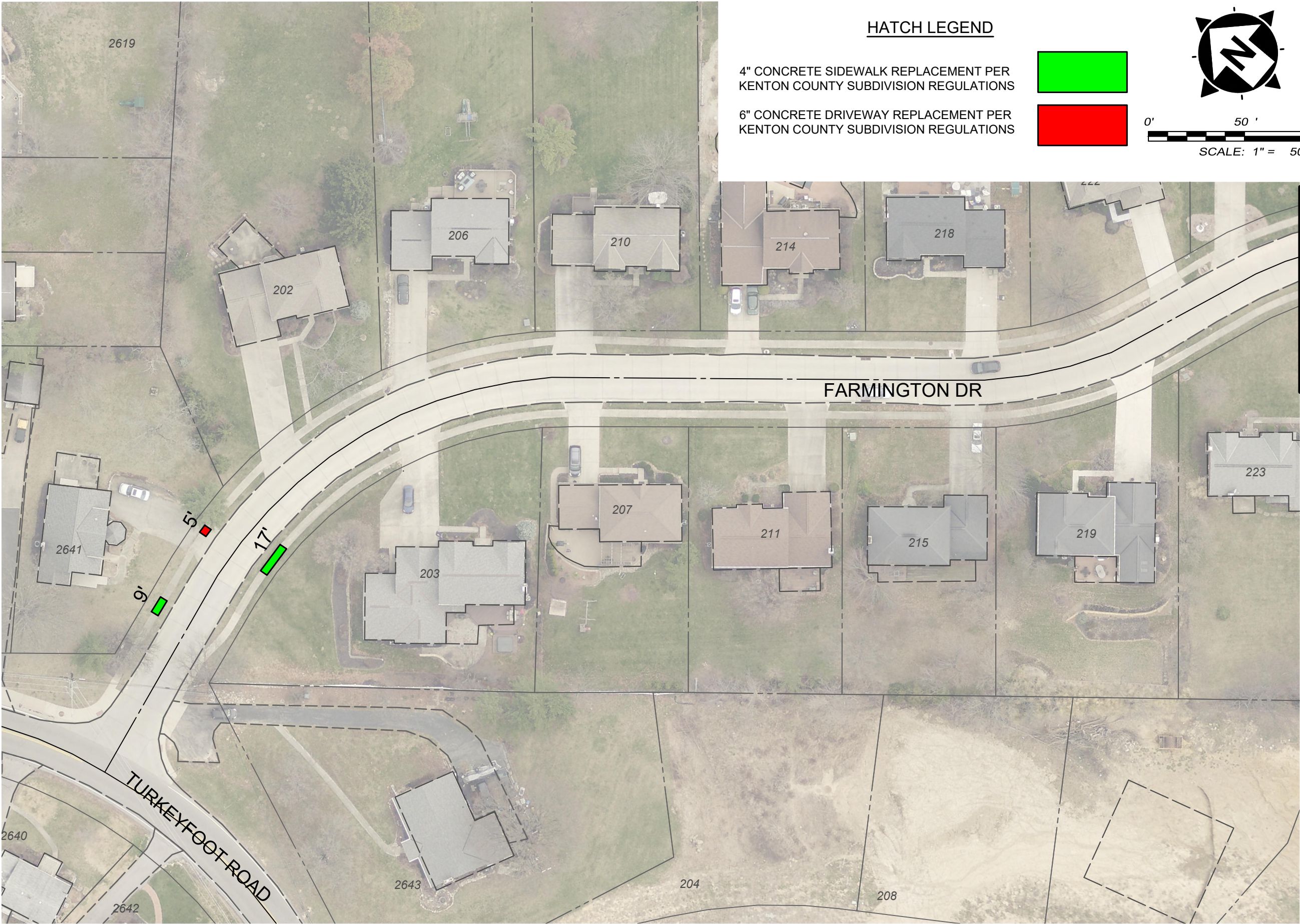
ISSUED FOR:	BID
ISSUE DATE:	2/20/2025
SCALE:	1" = 30'
DESIGNED BY:	MHEL
DRAWN BY:	AWAL
CHECKED BY:	MHEL

PROJECT NO. 23028603-01	
DISCIPLINE CIVIL	
SHEET NAME C7	
SHEET 7	OF 13

verdantas

2161 CHAMBER CENTER DRIVE
FORT MITCHELL, KENTUCKY 41017
TEL: (859) 525-0544
WWW.VERDANTAS.COM

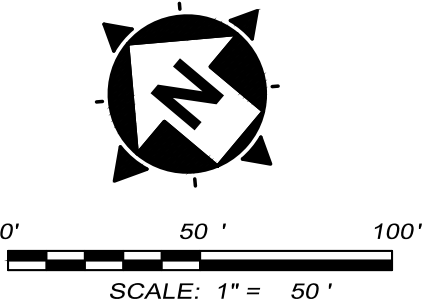
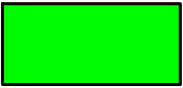
** QUANTITIES AND LOCATIONS GIVEN ARE APPROXIMATE. ACTUAL LIMITS OF REPLACEMENT TO BE MARKED IN THE FIELD BY THE OWNER PRIOR TO CONSTRUCTION. SECTIONS MAY BE ADDED OR DELETED FROM WHAT IS SHOWN ON THE PLANS. FINAL PAYMENT WILL BE MADE AT THE PROVIDED UNIT PRICE FOR EACH ITEM BASED ON THE QUANTITY ACTUALLY COMPLETED. **



HATCH LEGEND

4" CONCRETE SIDEWALK REPLACEMENT PER
KENTON COUNTY SUBDIVISION REGULATIONS

6" CONCRETE DRIVEWAY REPLACEMENT PER
KENTON COUNTY SUBDIVISION REGULATIONS



MATCH LINE "C"

2025 SIDEWALK SPOT
REPLACEMENT
- CITY OF LAKESIDE PARK, KY 41017 -

FARMINGTON DR

ISSUED FOR:	BID
ISSUE DATE:	2/20/2025
SCALE:	1" = 50'
DESIGNED BY:	MHEL
DRAWN BY:	AWAL
CHECKED BY:	MHEL

PROJECT NO. 23028603-01	
DISCIPLINE CIVIL	
SHEET NAME C8	
SHEET 8	OF 13

verdantas

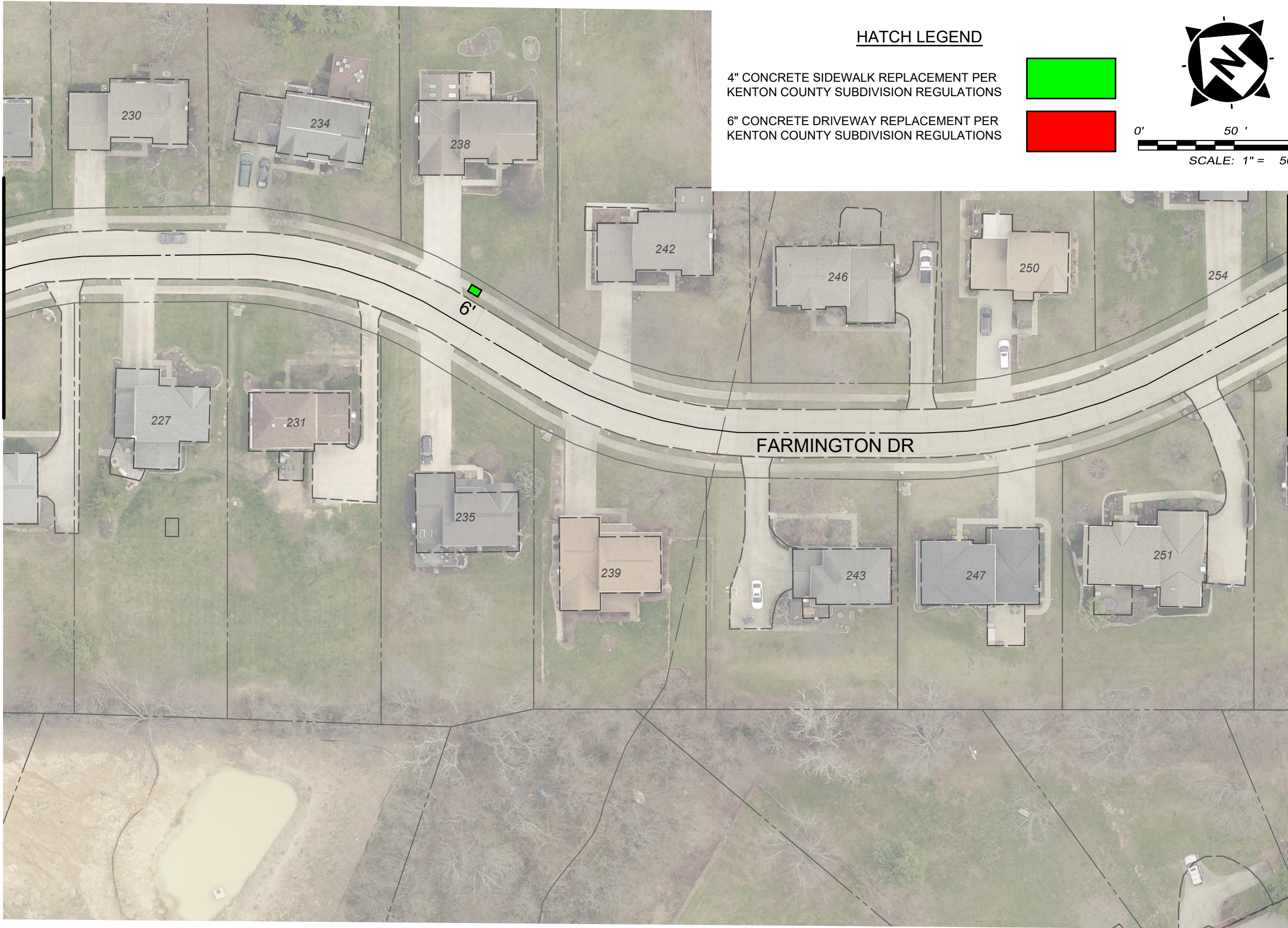
2161 CHAMBER CENTER DRIVE
FORT MITCHELL, KENTUCKY 41017
TEL. (859) 525-0544
WWW.VERDANTAS.COM

** QUANTITIES AND LOCATIONS GIVEN ARE APPROXIMATE. ACTUAL LIMITS OF REPLACEMENT TO BE MARKED IN THE FIELD BY THE OWNER PRIOR TO CONSTRUCTION. SECTIONS MAY BE ADDED OR DELETED FROM WHAT IS SHOWN ON THE PLANS. FINAL PAYMENT WILL BE MADE AT THE PROVIDED UNIT PRICE FOR EACH ITEM BASED ON THE QUANTITY ACTUALLY COMPLETED. **

H:\2023\23028603\DWG\BASE\23028603_C-BASE_SIDEWALK.DWG - C8 - 2/12/2025 4:39:35 PM - ANDREW WALSH

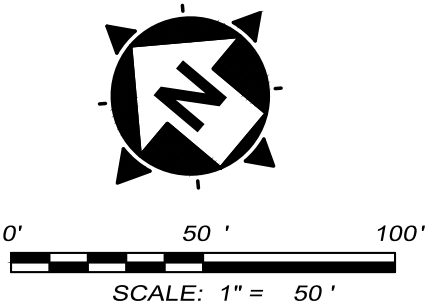
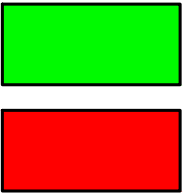
H:\2025\23028603\DWG\BASE\23028603_C9_SIDEWALK.DWG - C9 - 2/12/2025 4:39:35 PM - ANDREW WALSH

MATCH LINE "C"



HATCH LEGEND

- 4" CONCRETE SIDEWALK REPLACEMENT PER KENTON COUNTY SUBDIVISION REGULATIONS
- 6" CONCRETE DRIVEWAY REPLACEMENT PER KENTON COUNTY SUBDIVISION REGULATIONS



MATCH LINE "D"

** QUANTITIES AND LOCATIONS GIVEN ARE APPROXIMATE. ACTUAL LIMITS OF REPLACEMENT TO BE MARKED IN THE FIELD BY THE OWNER PRIOR TO CONSTRUCTION. SECTIONS MAY BE ADDED OR DELETED FROM WHAT IS SHOWN ON THE PLANS. FINAL PAYMENT WILL BE MADE AT THE PROVIDED UNIT PRICE FOR EACH ITEM BASED ON THE QUANTITY ACTUALLY COMPLETED. **

2025 SIDEWALK SPOT
REPLACEMENT
- CITY OF LAKESIDE PARK, KY 41017 -

FARMINGTON DR

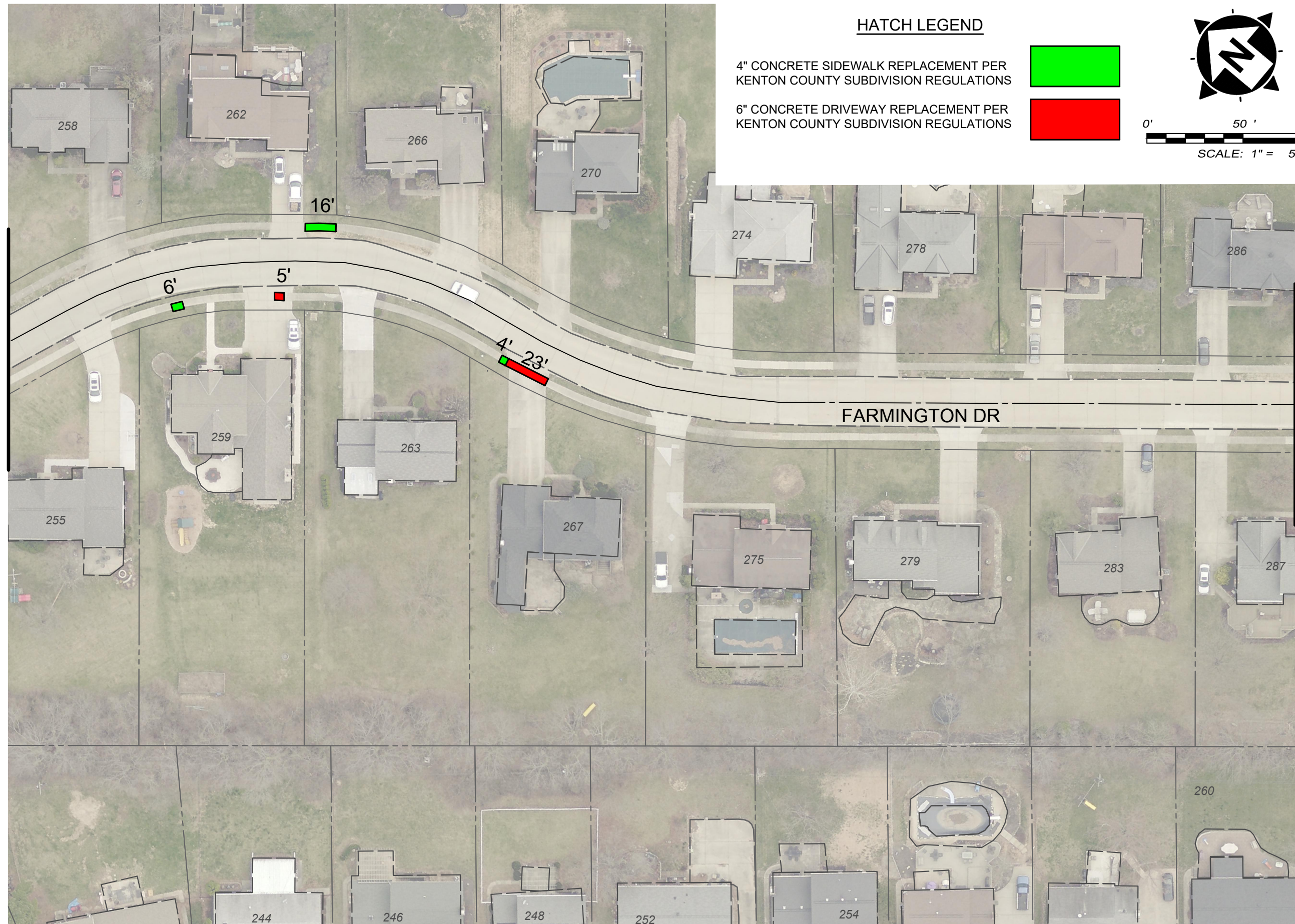
ISSUED FOR:	BID
ISSUE DATE:	2/20/2025
SCALE:	1" = 50'
DESIGNED BY:	MHEL
DRAWN BY:	AWAL
CHECKED BY:	MHEL

PROJECT NO.	
23028603-01	
DISCIPLINE	
CIVIL	
SHEET NAME	
C9	
SHEET	OF
9	13

verdantas

2161 CHAMBER CENTER DRIVE
FORT MITCHELL, KENTUCKY 41017
TEL. (859) 525-0544
WWW.VERDANTAS.COM

MATCH LINE "E"



MATCH LINE "E"

**2025 SIDEWALK SPOT
REPLACEMENT**
- CITY OF LAKESIDE PARK, KY 41017 -

FARMINGTON DR

ISSUED FOR:	2/20/2025	BID
SCALE:	1" = 50'	
DESIGNED BY:	MHEL	
DRAWN BY:	AWAL	
CHECKED BY:	MHEL	



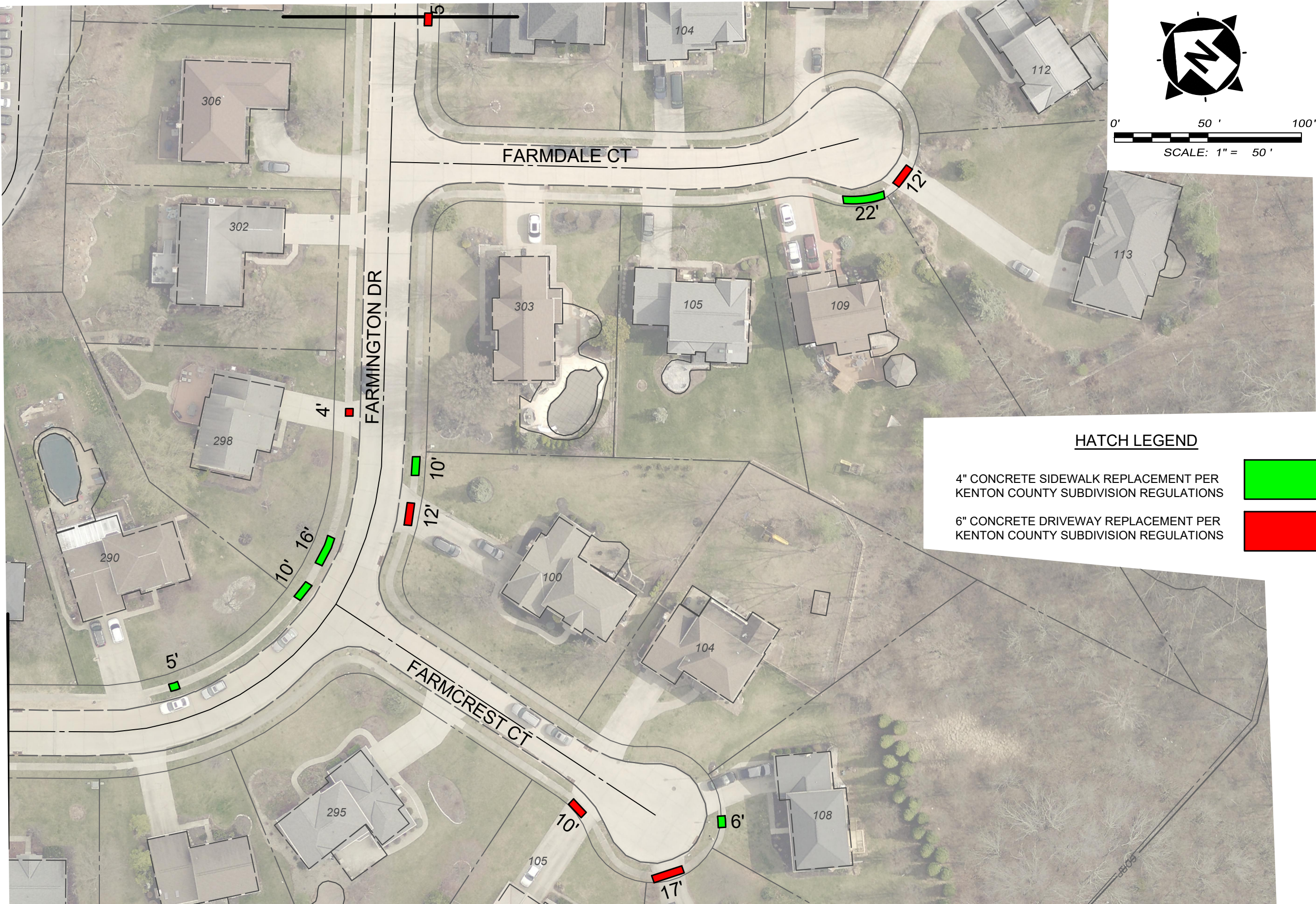
FORT MITCHELL, KENTUCKY 41017
TEL. (859) 525-0544

PROJECT NO.	
23028603-01	
DISCIPLINE	
CIVIL	
SHEET NAME	
C10	
SHEET	OF
10	13

** QUANTITIES AND LOCATIONS GIVEN ARE APPROXIMATE. ACTUAL LIMITS OF REPLACEMENT TO BE MARKED IN THE FIELD BY THE OWNER PRIOR TO CONSTRUCTION. SECTIONS MAY BE ADDED OR DELETED FROM WHAT IS SHOWN ON THE PLANS. FINAL PAYMENT WILL BE MADE AT THE PROVIDED UNIT PRICE FOR EACH ITEM BASED ON THE QUANTITY ACTUALLY COMPLETED. **

H:\2023\23028603\DWG\BASE\23028603_C-BASE_SIDEWALK.DWG - C11 - 2/12/2025 4:08:30 PM - ANDREW WALSH

MATCH LINE "F"



** QUANTITIES AND LOCATIONS GIVEN ARE APPROXIMATE. ACTUAL LIMITS OF REPLACEMENT TO BE MARKED IN THE FIELD BY THE OWNER PRIOR TO CONSTRUCTION. SECTIONS MAY BE ADDED OR DELETED FROM WHAT IS SHOWN ON THE PLANS. FINAL PAYMENT WILL BE MADE AT THE PROVIDED UNIT PRICE FOR EACH ITEM BASED ON THE QUANTITY ACTUALLY COMPLETED. **



2161 CHAMBER CENTER DRIVE
FORT MITCHELL, KENTUCKY 41017
TEL. (859) 525-0544
WWW.VERDANTAS.COM

ISSUED FOR:	BID
ISSUE DATE:	2/20/2025
SCALE:	1" = 50'
DESIGNED BY:	MHEL
DRAWN BY:	AWAL
CHECKED BY:	MHEL

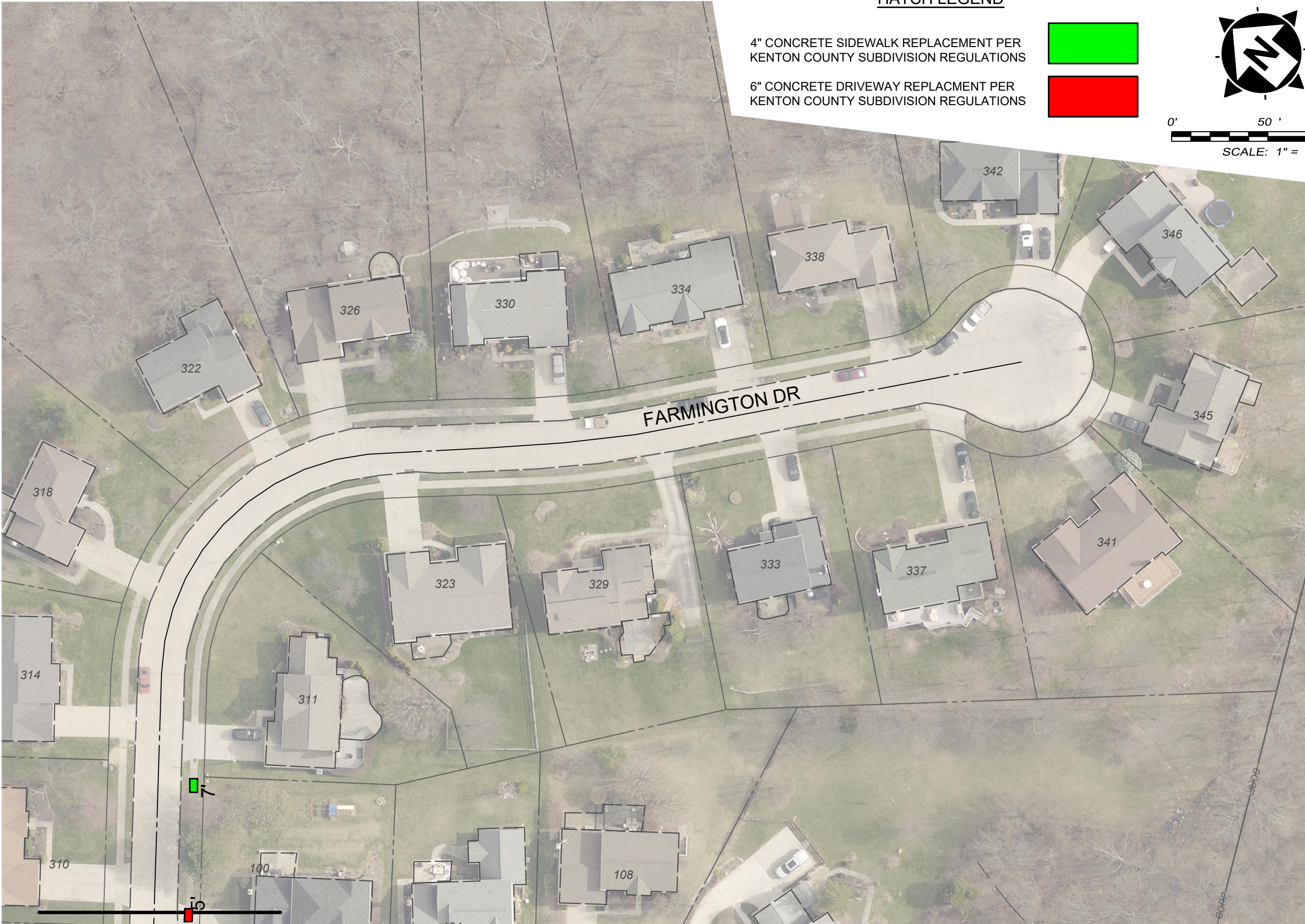
2025 SIDEWALK SPOT REPLACEMENT

- CITY OF LAKESIDE PARK, KY 41017 -

**FARMINGTON DR
FARMCREST CT & FARMDALE CT**

PROJECT NO.	
23028603-01	
DISCIPLINE	
CIVIL	
SHEET NAME	
C11	
SHEET	OF
11	13

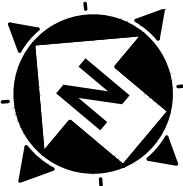
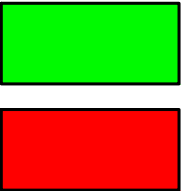
H:\2025\23028603\DWG\BASE\23028603_C-BASE_SIDEWALK.DWG - C12 - 2/12/2025 4:08:30 PM - ANDREW WALSH



HATCH LEGEND

4" CONCRETE SIDEWALK REPLACEMENT PER
KENTON COUNTY SUBDIVISION REGULATIONS

6" CONCRETE DRIVEWAY REPLACEMENT PER
KENTON COUNTY SUBDIVISION REGULATIONS



0' 50' 100'

SCALE: 1" = 50'

MATCH LINE "G"

** QUANTITIES AND LOCATIONS GIVEN ARE APPROXIMATE. ACTUAL LIMITS OF REPLACEMENT TO BE MARKED IN THE FIELD BY THE OWNER PRIOR TO CONSTRUCTION. SECTIONS MAY BE ADDED OR DELETED FROM WHAT IS SHOWN ON THE PLANS. FINAL PAYMENT WILL BE MADE AT THE PROVIDED UNIT PRICE FOR EACH ITEM BASED ON THE QUANTITY ACTUALLY COMPLETED. **

2161 CHAMBER CENTER DRIVE
FORT MITCHELL, KENTUCKY 41017
TEL: (859) 525-0544
WWW.VERDANTAS.COM

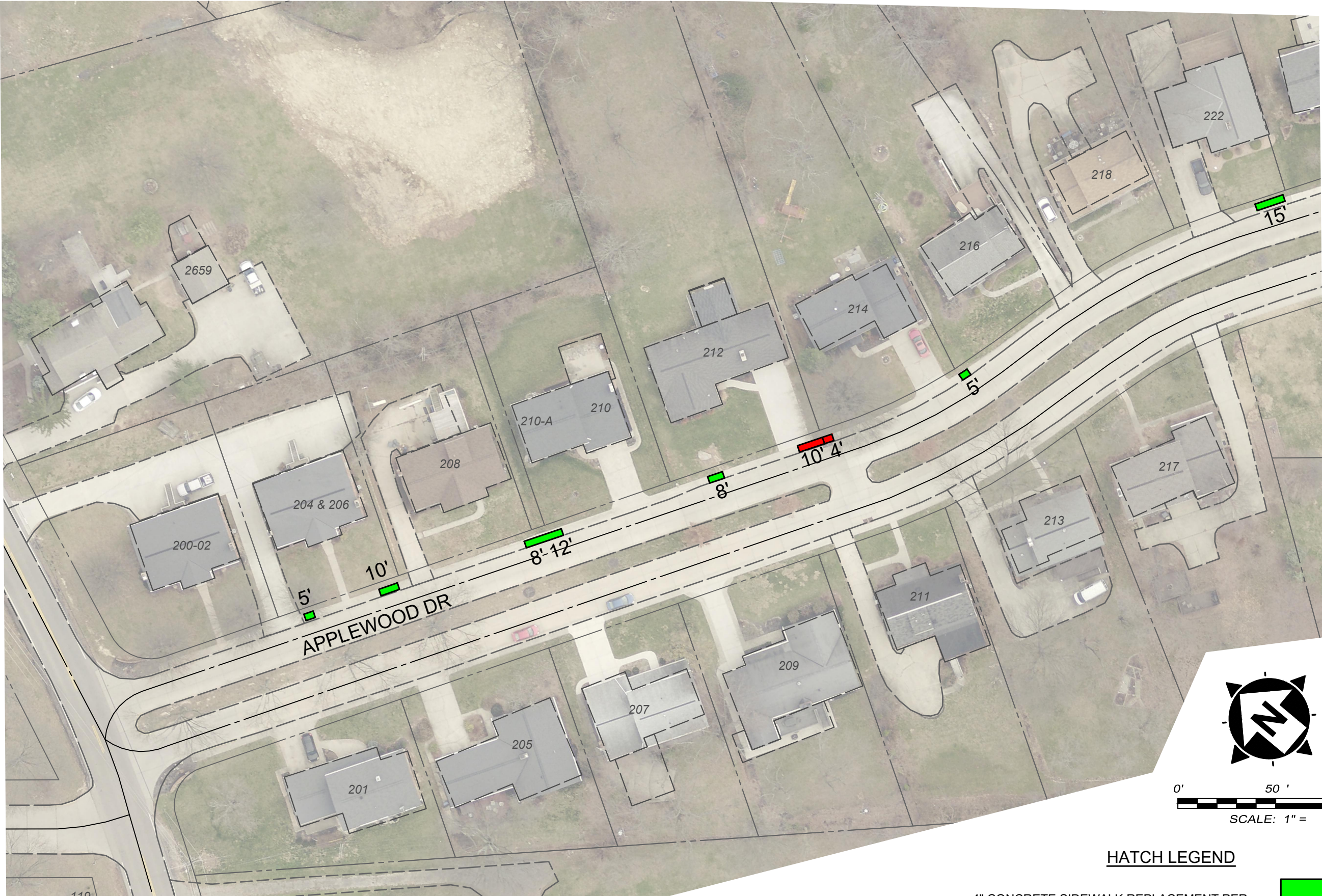
ISSUED FOR:	BID
ISSUE DATE:	2/20/2025
SCALE:	1" = 50'
DESIGNED BY:	MHEL
DRAWN BY:	AWAL
CHECKED BY:	MHEL

2025 SIDEWALK SPOT
REPLACEMENT
- CITY OF LAKESIDE PARK, KY 41017 -

FARMINGTON DR

PROJECT NO.	
23028603-01	
DISCIPLINE	
CIVIL	
SHEET NAME	
C12	
SHEET	OF
12	13

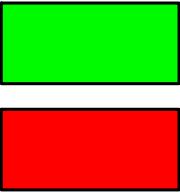
H:\2023\23028603\DWG\BASE\23028603_C-BASE_SIDEWALK.DWG - C13 - 2/12/2025 4:08:30 PM - ANDREW WALSH



** QUANTITIES AND LOCATIONS GIVEN ARE APPROXIMATE. ACTUAL LIMITS OF REPLACEMENT TO BE MARKED IN THE FIELD BY THE OWNER PRIOR TO CONSTRUCTION. SECTIONS MAY BE ADDED OR DELETED FROM WHAT IS SHOWN ON THE PLANS. FINAL PAYMENT WILL BE MADE AT THE PROVIDED UNIT PRICE FOR EACH ITEM BASED ON THE QUANTITY ACTUALLY COMPLETED. **

4" CONCRETE SIDEWALK REPLACEMENT PER
KENTON COUNTY SUBDIVISION REGULATIONS

6" CONCRETE DRIVEWAY REPLACEMENT PER
KENTON COUNTY SUBDIVISION REGULATIONS



HATCH LEGEND

2025 SIDEWALK SPOT
REPLACEMENT
- CITY OF LAKESIDE PARK, KY 41017 -
APPLEWOOD DR

ISSUED FOR:	BID
ISSUE DATE:	2/20/2025
SCALE:	1" = 50'
DESIGNED BY:	MHEL
DRAWN BY:	AWAL
CHECKED BY:	MHEL

PROJECT NO.	
23028603-01	
DISCIPLINE	
CIVIL	
SHEET NAME	
C13	
SHEET	OF
13	13

2161 CHAMBER CENTER DRIVE
FORT MITCHELL, KENTUCKY 41017
TEL. (859) 525-0544
WWW.VERDANTAS.COM