

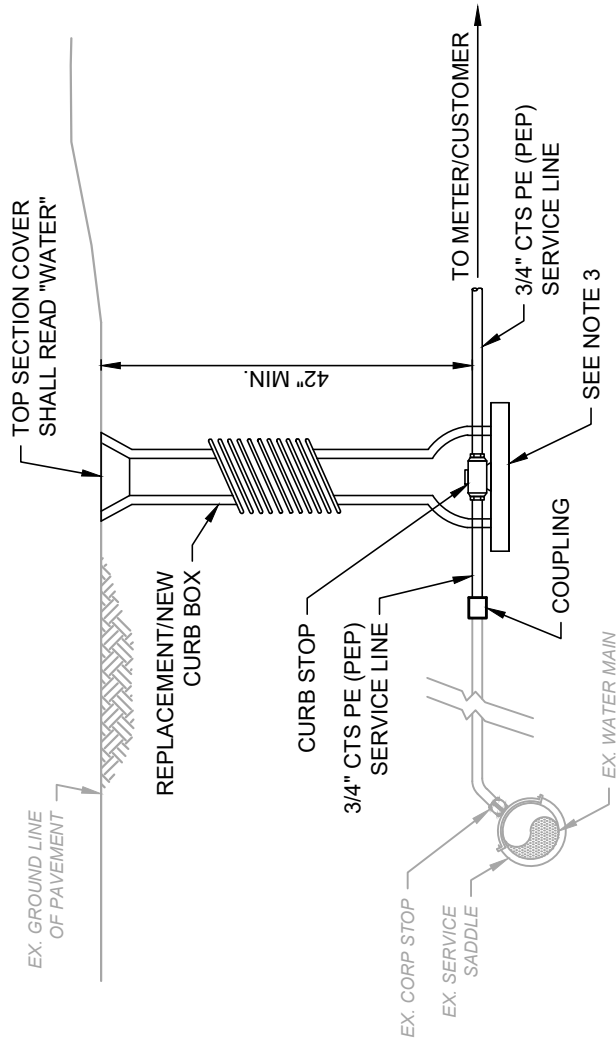


ISSUE DATE:	3/28/24
SCALE:	NOT TO SCALE
DESIGNED BY:	BRA
DRAWN BY:	AGD
CHECKED BY:	BRA

**VILLAGE OF SOUTH SOLON  
WATER METER IMPROVEMENTS  
MADISON COUNTY, OHIO**

**CURB STOP ASSEMBLY DETAIL**

PROJECT NO.	
220924	
DISCIPLINE	
CIVIL	
SHEET	OF
1	1



**NOTES:**

1. WATER SERVICE LINE SHALL BE A SINGLE PIECE OF PIPE WITHOUT JOINTS, COUPLING OR UNIONS BETWEEN THE CURB STOP AND THE METER SET.
2. AT THE TIME SITE GRADING AND LANDSCAPING IS COMPLETED, THE CURB BOX OVER THE CURB STOP SHALL:
  - BE SET VERTICALLY OVER THE CURB STOP SO THAT A KEY CAN BE PLACED ON THE CURB STOP AND THE CURB STOP EASILY OPERATES TO THE FULLY OPEN AND CLOSED POSITIONS
  - HAVE THE TOP SET AT THE FINISHED GRADE,
  - BE UNBROKEN.
3. PROVIDE FOOT PIECE FOR CURB BOX OR ALTERNATE FORM OF MANUFACTURED STABILIZER TO MAINTAIN POSITION OF CURB STOP.
4. CONTRACTOR SHALL PROVIDE INSERT STIFFENERS AT ALL POINTS OF CONNECTION OF PE SERVICE LINE IN ACCORDANCE WITH MANUFACTURER'S RECOMMENDATIONS.

**CURB STOP ASSEMBLY**

SCALE: NOT TO SCALE