

# ADDENDUM #1

**PROJECT #:** 242762  
**PROJECT TITLE:** AJ Jolly Dam Repair  
**CLIENT:** Campbell County Fiscal Court  
**Issue Date:** April 21, 2026

This is to certify that you are in receipt of Addendum #1 for the above mentioned project.

Please sign and return via email to: [bretzer@verdantas.com](mailto:bretzer@verdantas.com)

_____	_____	_____
Name/Title	Company	Date
_____		
Signature		

## CLARIFICATION:

1. Can the existing site access road and staging area support a 50-75 ton crane for the prestressed concrete box beam removal and reinstallation? Are there any known weight or access restrictions we should be aware of when planning crane mobilization?

*Response: We are not aware of any known weight or access restrictions. A stability analysis has not been calculated.*

2. Is there any opportunity to crush and stockpile demolished concrete on site for reuse as fill or base material, or does all demolished concrete need to be hauled and disposed of off-site per the grading notes?

*Response: No, there is not an opportunity to crush, stockpile and reuse demolished concrete as fill or base material on this project.*

3. How will the existing concrete riser be accessed during the lake drawdown for demolition and reconstruction? Will a temporary access road or causeway be required, and if so, is that the contractor's responsibility?

*Response: Access to the existing concrete riser will be by the Contractor. The means and methods for the removal and replacement of the concrete riser will be the responsibility of the Contractor.*

4. Can you provide the approximate weight of the existing prestressed concrete box beams (bridge) so we can properly size the crane for removal and reset?

*Response: Each precast box girder weighs approximately 31,000 lbs.*

5. Please confirm that the steel reinforcement is included in the associated bid items.

*Response: Yes, the steel reinforcement required per the drawings is included in the concrete bid items.*

6. Will undercut of the existing slab be necessary?

*Response:*

*A contingency bid item, Bid Item 52 was added which provides for 1' of undercut and backfill for 20% of the Concrete for the Spillway and Stilling Basin Replacement.*

*A contingency bid item, Bid Item 53 was added which provides for 1' of undercut and backfill for 10% of the Asphalt Reconstruction of Roadway*

*A detail for corresponding with these items has been added on page C101*

7. On Sheet D-104 is the removal of the Steel Shield and Brackets part of EnviroScience's scope?

*Response: Yes*

8. Grout Curtain – What is the purpose of the secondary grout curtain?

*Response: The grout curtain wall is to reduce seepage under the weir/spillway. There are 2 lines of grout holes (downstream line of holes for primary and upstream line of holes for secondary), but it is only for one wall.*

*Refer to Specification Section 31.43.13*

*Hole Sequences*

A. *Perform drilling and grouting in 2 lines as shown on the Contract Drawings. Drill and grout the downstream line first, followed by the upstream line.*

9. Would the County consider allowing the Contractor to complete the park road improvements in Spring, 2027?

*Response: Yes, the County would consider allowing the park road improvements to be completed in Spring, 2027 because of potential weather conditions in December or start delay due to permitting. This can be discussed as part of the preconstruction meeting. If road improvements are delayed, The Contractor will need to delay removal of the existing roadway and starting any base construction. All unit prices would remain in effect with no adjustments.*

10. Will the County allow the existing bridge structure to be deconstructed and removed in pieces, or does it need to be removed in its entirety?

*Response: The County has no preference as the Contractor is responsible for means and methods, as long as there is no damage to existing bridge or new support wall.*

11. Is the sidewall mounted fencing at the top of the concrete weir and wingwalls galvanized?

*Response: All fencing shall be galvanized, including the anchorage.*

**BID ITEMS:**

Bid Form Item 8: Sawcut and remove existing concrete slabs seems to be a duplicate of bid form item 34, spillway concrete demolition, and item 37, stilling basin demolition

*Response: Bid Item 8 has been revised to "SAWCUT AND REMOVE EXISTING SPILLWAY CONCRETE AND EXISTING STILLING BASIN CONCRETE TO PROPOSED SUBGRADE (INCLUDES REMOVAL OF EXISTING CONCRETE TURNDOWNS AND APPROPRIATE BACKFILL)". Item items 34 and 37 have been removed. This quantity has also been revised.*

Bid Form Item 9: Sawcut and remove existing asphalt pavement. Please show the limits of this work on a drawing.

*Response: Bid Item 9 has been updated. The limits of this work is shown on page G104 with the Asphalt Reconstruction of Roadway Section Hatch and on page D100 with the Bridge Approach Demolition Hatch. This quantity has also been revised.*

Bid Form Item 10: Subgrade reshaping and compaction. Please show the limits of this work on a drawing.

*Response: The limits of this work is shown on page G104 with the Asphalt Reconstruction of Roadway Section Hatch, on page C400 with the Asphalt Reconstruction of Bridge Approaches Hatch and on page C400 with the 18" Concrete Spillway Slab Replacement Hatch. This quantity has also been revised.*

Bid Form Items 15, 16 and 17: Asphalt reconstruction of roadway. Please show the limits of this work on a drawing.

*Response: The limits of work on Bid Items 15, 16 & 17 are shown on page G104 with the Asphalt Reconstruction of Roadway Section Hatch. Quantities for Bid Items 15, 16 & 17 have been revised.*

#### **ADDITIONAL BID ITEM REVISIONS:**

Bid Form Item 11  
*Quantity has been updated.*

Bid Form Item 12  
*Quantity has been updated.*

Bid Form Item 25  
*Quantity has been updated.*

Bid Form Item 36  
*Galvanized has been added to the description.*

Bid Form Items 52, 53, and 54 have been added to the Bid Form.

#### **PLAN REVISIONS:**

SHEET G-103  
*Renamed Grouted Riprap Detail to Class III Channel Lining Detail and removed all mentioned of Grouted Riprap.*

SHEET G-104  
*Renamed Asphalt Roadway Reconstruction Section to Asphalt Reconstruction of Roadway. This matches Bid Form Items 15, 16, and 17.  
Also revised keynote 3 language for this detail, and removed mentioned of geotextile.*

SHEET D-100  
*Renamed Roadway Demolition Hatch to Bridge Approach Demolition. This matches Bid Form Items 18, 19, and 20.*



SHEET C-101

*Added Subgrade Repair Detail corresponding to new Bid Form Items 52, 53, and 54.*

SHEET C-400

*Keynote 10 Leader at Interior Longitudinal U.D. corrected to Keynote 7 Leader.*

*Hatch Legend language updated to match Details and Bid Form language.*

*Interior Longitudinal U.D. extended to outlet at end of Chute Block.*

SHEET C-401

*U.D. profile updated to revise Chute Block and extend Interior Longitudinal U.D.*





**AJ JOLLY DAM REPAIRS - ADDENDUM 1**

ITEM NO.	SPEC. NO.	ITEM	Estimated Quantity	Unit of Measure	Unit Cost Total	Total Amount Bid
1	110	MOBILIZATION	1	LS		
2	202	CLEARING AND GRUBBING	1	LS		
3	112/SPL	MAINTENANCE AND CONTROL OF TRAFFIC DURING CONSTRUCTION	1	LS		
4	SPL	REPLACE EXISTING GUARDRAIL PER PLAN	188	LF		
5	212/213	EROSION & WATER POLLUTION CONTROL	1	LS		
6	204	EXCAVATE MATERIAL FOR U.D. AND COUNTERWEIGHTS, STOCKPILE ONSITE, PLACE MATERIAL BACK IN TRENCH AFTER U.D. AND COUNTERWEIGHTS INSTALLED, PER GEOTECHNICAL RECOMMENDATIONS	3000	CY		
7	SPL	YARD RESTORATION (4" TOPSOIL, SEED AND MULCH)	3700	SY		
8	204	SAWCUT AND REMOVE EXISTING SPILLWAY CONCRETE AND EXISTING STILLING BASIN CONCRETE TO PROPOSED SUBGRADE (INCLUDES REMOVAL OF EXISTING CONCRETE TURNDOWNS AND APPROPRIATE BACKFILL)	1030	SY		
9	204	SAWCUT AND REMOVE EXISTING ASPHALT PAVEMENT	3094	SY		
10	207/SPL*	SUBGRADE RESHAPING AND COMPACTION OF EXISTING SUBGRADE	4124	SY		
11	214	WOVEN TEXTILE, MIRAFI 600X OR EQUIVALENT	1030	SY		



**AJ JOLLY DAM REPAIRS  
CAMPBELL COUNTY, KENTUCKY**

**PROJECT: 242762**

**DATE: 4/21/2026**

**AJ JOLLY DAM REPAIRS - ADDENDUM 1**

ITEM NO.	SPEC. NO.	ITEM	Estimated Quantity	Unit of Measure	Unit Cost Total	Total Amount Bid
12	302	6" CRUSHED STONE BASE, (LESS THAN 7% FINES) COMPACTED TO 100% - FOR CONCRETE SLAB SUBBASE	1030	SY		
13	SPL	BACKFILL VOIDS UNDERNEATH CONCRETE FOOTER WITH HIGH-DENSITY POLYURETHANE FOAM (HDPF)	4000	LB		
14	110/SPL	MOBILIZATION (HDPF Only)	1	LS		
15	302	ASPHALT RECONSTRUCTION OF ROADWAY - 6" CRUSHED STONE BASE	2864	SY		
16	402/403/SPL	ASPHALT RECONSTRUCTION OF ROADWAY - 1-1/2" ASPHALT PAVEMENT INTERMEDIATE LEVEL COURSE	2864	SY		
17	402/403	ASPHALT RECONSTRUCTION OF ROADWAY - 1-1/2" ASPHALT PAVEMENT SURFACE WITH ARAMID FIBER REINFORCEMENT (FORTA-FLOOR ACE FIBER)	2864	SY		
18	302	ASPHALT RECONSTRUCTION OF BRIDGE APPROACHES - 7" DENSE GRADED AGGREGATE (DGA)	231	SY		
19	402/403/SPL	ASPHALT RECONSTRUCTION OF BRIDGE APPROACHES - 6" ASPHALT PAVEMENT BASE COURSE	231	SY		
20	402/403	ASPHALT RECONSTRUCTION OF BRIDGE APPROACHES - 1.5" ASPHALT PAVEMENT SURFACE COURSE	231	SY		
21	402/403	ASPHALT OVERLAY FOR BRIDGE DECK - 1.5" ASPHALT PAVEMENT SURFACE COURSE	127	SY		
22	402/403	ASPHALT OVERLAY FOR BRIDGE DECK - 1.5" ASPHALT PAVEMENT LEVELING COURSE	127	SY		
23	808	BRIDGE WATERPROOFING; ROYSTON 10A EASY PAVE BY CHASE (OR APPROVED EQUAL)	127	SY		



AJ JOLLY DAM REPAIRS - ADDENDUM 1

ITEM NO.	SPEC. NO.	ITEM	Estimated Quantity	Unit of Measure	Unit Cost Total	Total Amount Bid
24	704	8" RIGID PERFORATED PVC UNDERDRAIN SYSTEM - SPILLWAY EXTERIOR (CLEANOUTS INCIDENTAL)	478	LF		
25	704	8" RIGID PERFORATED PVC UNDERDRAIN SYSTEM - SPILLWAY INTERIOR - LONGITUDINAL (CLEANOUTS INCIDENTAL)	280	LF		
26	704	6" RIGID PERFORATED PVC UNDERDRAIN SYSTEM - SPILLWAY INTERIOR - TRANSVERSE (CLEANOUTS INCIDENTAL)	315	LF		
27	703/SPL	CLASS III CHANNEL LINING - 24" THICK	276	SY		
28	SPL	REMOVE EXISTING VALVE, INSTALL NEW 16" BI-DIRECTIONAL CAST KNIFE GATE VALVE, VALVE STEM, PEDESTAL & ALL NECESSARY COUPLING, SUPPORT, STEM GUIDES, COMPLETE, or approved equal. ENVIROSCIENCE COST	1	LS	\$95,000.00	\$95,000.00
29	SPL	ASSIGNMENT FEE: REMOVAL & INSTALLATION OF NEW VALVE, VALVE STEM, PEDESTAL (10% MAX FEE FOR ITEM 28)	1	LS		
30	SPL	RISER CONCRETE DEMOLITION	29	CY		
31	SPL	RISER CONCRETE	24	CY		
32	SPL	BRIDGE SECTION CONCRETE DEMOLITION	212	CY		
33	SPL	BRIDGE SECTION CONCRETE	419	CY		
35	SPL	SPILLWAY CONCRETE	633	CY		
36	SPL	GALVANIZED FENCING, INCLUDES REMOVAL	546	LF		



AJ JOLLY DAM REPAIRS  
CAMPBELL COUNTY, KENTUCKY

PROJECT: 242762

DATE: 4/21/2026

AJ JOLLY DAM REPAIRS - ADDENDUM 1

ITEM NO.	SPEC. NO.	ITEM	Estimated Quantity	Unit of Measure	Unit Cost Total	Total Amount Bid
38	SPL	STILLING BASIN CONCRETE	126	CY		
39	SPL	TYPICAL CONCRETE DEMO, SURFACE PREP AND REPAIR, at FENCE POSTS	40	EA		
40	SPL	TYPICAL CONCRETE DEMO, SURFACE PREP AND REPAIR, at OGEE WEIR	25	SF		
41	SPL	GALVANIZED STEEL HATCH (2'6"X2'6")	1	LS		
42	SPL	GALVANIZED STEEL SIDE MOUNTED RAILING, INCLUDES 30" SELF-CLOSING GATE	52	LF		
43	SPL	BRIDGE REMOVAL & RESET, INCLUDING RESETTING EXISTING GUARDRAIL, AS PER PLAN	1	LS		
44	SPL	VERTICAL DRILLING FOR GROUT CURTAIN	567	LF		
45	SPL	GROUT FOR GROUT CURTAIN	124	CY		
46	SPL	ROCK ANCHORS	21	EACH		
47	701	REMOVE AND REPLACE EXISTING 24" STORM CULVERT - MATCH EXISTING INVERTS	43	LF		
48	710	INSTALL PROPOSED HEADWALL (24")	2	EA		
49	703	CLASS II CHANNEL LINING FOR HEADWALL OUTLET PROTECTION	21	TON		



**AJ JOLLY DAM REPAIRS**  
**CAMPBELL COUNTY, KENTUCKY**

**PROJECT: 242762**

**DATE: 4/21/2026**

**AJ JOLLY DAM REPAIRS - ADDENDUM 1**

ITEM NO.	SPEC. NO.	ITEM	Estimated Quantity	Unit of Measure	Unit Cost Total	Total Amount Bid
50	204/SPL	CLEANOUT ROADSIDE DITCH 20' NORTH AND SOUTH OF DITCH	1	LS		
51	SPL	CONSTRUCTION CAMERA	9	MONTH		
52	302/SPL*	CRUSHED STONE BASE (LESS THAN 7% FINES) FOR SUBGRADE REPAIR (INCLUDES EXCAVATION AND DISPOSAL OF UNSUITABLE MATERIAL)* - FOR CONCRETE SPILLWAY AND STILLING BASIN REPLACEMENT	206	CY		
53	302/SPL*	CRUSHED STONE BASE (LESS THAN 7% FINES) FOR SUBGRADE REPAIR (INCLUDES EXCAVATION AND DISPOSAL OF UNSUITABLE MATERIAL)* - FOR ASPHALT RECONSTRUCTION OF ROADWAY	309	CY		
54	SPL*	GEOGRID (TENSAR BX 1200 OR EQUIVALENT) REINFORCEMENT FOR SUBGRADE REPAIR	412	SY		
<b>SUBTOTAL:</b>						
55	SPL	OWNER'S CONTINGENCY (10% OF SUBTOTAL)	1	LS		
<b>TOTAL PROJECT BID:</b>						

CHD BY DATE	REVISION	NO.
09-22-2023	A 30% DESIGN	A
10-17-2023	B 60% DESIGN	B
12-22-2023	C SUBMITTAL FOR PERMIT (NOT FOR CONSTRUCTION)	C
02-23-2024	D KDC/HADS REVIEW CHANGE (NOT FOR CONSTRUCTION)	D
03-21-2024	E ISSUE FOR BID	E
	F ADDENDUM 1	F

**AJ JOLLY DAM REPAIR  
CAMPBELL COUNTY, KY**

**EROSION CONTROL NOTES**

DATE  
MARCH 31, 2026

SCALE  
AS NOTED

SHEET  
G-103

- NOTES:
- SUBSOILING SHALL OCCUR WHEN SOIL MOISTURE IS LOW ENOUGH TO ALLOW THE SOIL TO CRACK OR FRACTURE. SUBSOILING IS NOT PERMITTED ON SLIP-PRONE AREAS.
  - THE SITE SHALL BE GRADED TO PERMIT THE USE OF CONVENTIONAL EQUIPMENT FOR SEEDBED PREPARATION AND SEEDING.
  - TOPSOIL SHALL BE APPLIED WHERE NEEDED TO ESTABLISH VEGETATION.
  - THE SEEDBED SHALL BE PREPARED BY APPLYING AGRICULTURAL GROUND LIMESTONE OR FERTILIZER AS RECOMMENDED BY A SOIL TEST. IN LIEU OF A SOIL TEST, APPLY LIME AT 2 TONS/AC. OR FERTILIZER AT 500 LB/AC. OF 10-10-10 OR 12-12-12 ANALYSIS. LIME AND FERTILIZER SHALL BE WORKED INTO THE SOIL TO A DEPTH OF 3".
  - APPLY SEED UNIFORMLY ON FIRM, MOIST SEED BED.
  - SEEDING SHOULD BE APPLIED FROM MARCH 1 TO MAY 31 OR AUGUST 1 TO SEPTEMBER 30. IF SEEDING OCCURS OUTSIDE OF THESE DATES, ADDITIONAL MULCH AND IRRIGATION MAY BE REQUIRED TO ENSURE A MINIMUM OF 80% GERMINATION. TILLAGE FOR SEEDBED PREPARATION SHALL OCCUR WHEN THE SOIL IS DRY ENOUGH TO CRUMBLE AND NOT FORM RIBBONS WHEN COMPRESSED BY HAND.
  - SEEDING SHOULD NOT BE APPLIED FROM OCTOBER 1 TO NOVEMBER 20 BECAUSE SEEDS MAY GERMINATE, BUT WILL NOT SURVIVE THE WINTER. USE THE FOLLOWING METHODS FOR DORMANT SEEDING:
    - FROM OCTOBER 1 TO NOVEMBER 20, INCREASE THE SEEDING RATE BY 50%. PREPARE THE SEED BED, ADD LIME AND FERTILIZER, MULCH AND ANCHOR.
    - FROM NOVEMBER 20 TO MARCH 15, ONLY IF SOIL CONDITIONS PERMIT, INCREASE THE SEEDING RATE BY 50%. PREPARE THE SEED BED, ADD LIME AND FERTILIZER, APPLY THE SEED MIXTURE, MULCH AND ANCHOR.
  - APPLY MULCH MATERIAL IMMEDIATELY AFTER SEEDING.
  - PERMANENT SEEDING SHALL INCLUDE IRRIGATION TO ESTABLISH VEGETATION DURING DRY OR HOT WEATHER OR ON ADVERSE SITE CONDITIONS AS NEEDED. AVOID EXCESSIVE IRRIGATION AND MONITOR TO PREVENT EROSION AND DAMAGE FROM RUNOFF.
  - PERMANENT SEEDING SHALL NOT BE CONSIDERED ESTABLISHED FOR AT LEAST 1 FULL YEAR FROM THE TIME OF PLANTING. DURING THIS PERIOD, INSPECT FOR SOIL EROSION OR PLANT LOSS AND REPAIR BARE OR SPARSE AREAS. FILL GULLIES, RE-FERTILIZE, RE-SEED OR RE-MULCH AS NEEDED.
  - A MINIMUM OF 70% GROWTH DENSITY, BASED ON A VISUAL INSPECTION, MUST EXIST FOR AN ADEQUATE PERMANENT VEGETATIVE PLANTING.

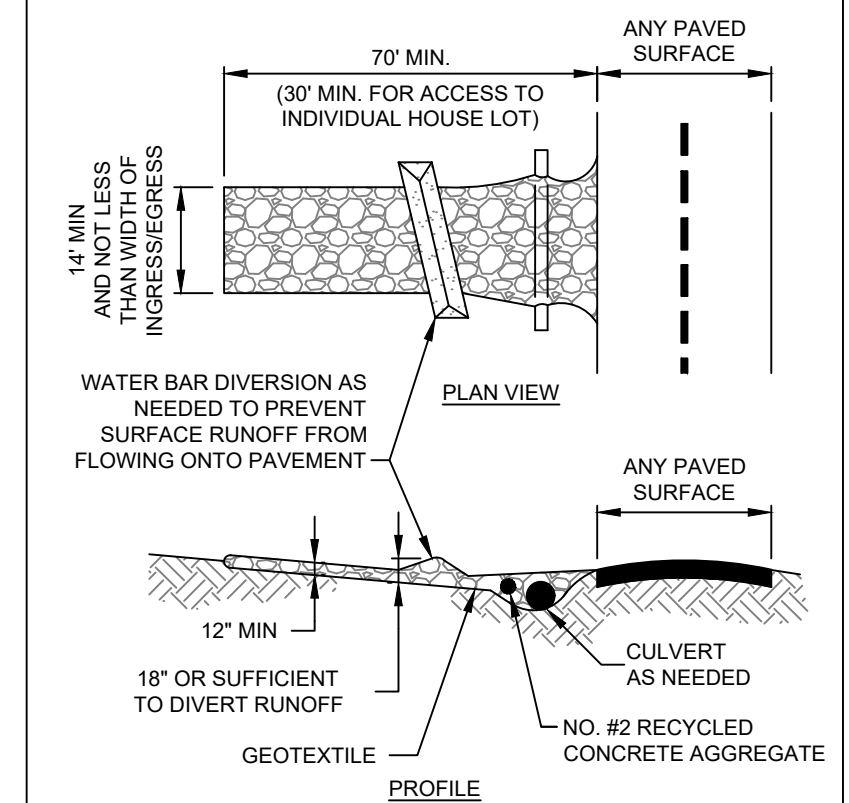
PERMANENT SEEDING FERTILIZATION AND MOWING CHART

MIXTURE	FORMULA	LB/AC.	TIME	MOW
CREeping RED FESCUE DOMESTIC RYEGRASS KENTUCKY BLUEGRASS	10-10-10	500	FALL, YEARLY, OR AS NEEDED	≥3"
TALL FESCUE	10-10-10	500		≥4"
TURF-TYPE FESCUE	10-10-10	500		
CROWN VETCH FESCUE	0-20-20	400	SPRING, AND YEARLY AFTER ESTABLISHED	DO NOT MOW
FLAT PEA FESCUE	0-20-20	400		

PERMANENT SEEDING SPECIES SELECTION

SEED MIX	SEED RATE LB/AC.	NOTES:
GENERAL USE		
CREeping RED FESCUE DOMESTIC RYEGRASS KENTUCKY BLUEGRASS	20 - 40 10 - 20 20 - 40	FOR CLOSE MOWING AND WATERWAYS WITH ≤2.0 FT./SEC. VELOCITY
TALL FESCUE	40 - 50	
TURF-TYPE FESCUE	90	
STEEP BANKS OR CUT SLOPES		
TALL FESCUE	40 - 50	
CROWN VETCH TALL FESCUE	10 - 20 20 - 30	DO NOT SEED LATER THAN AUGUST
FLAT PEA	20 - 25	DO NOT SEED LATER THAN AUGUST
FLAT FESCUE	20 - 30	
ROAD DITCHES AND SWALES		
TALL FESCUE	40 - 50	
TURF-TYPE FESCUE KENTUCKY BLUEGRASS	90 5	
LAWN		
KENTUCKY BLUEGRASS PERENNIAL RYEGRASS	100 - 120 100 - 120	
KENTUCKY BLUEGRASS CREeping RED FESCUE	100 - 120 100 - 120	FOR SHADED AREAS

PERMANENT SEEDING DETAIL  
SCALE: NONE



- NOTES:
- PLACE GEOTEXTILE OVER THE ENTIRE AREA PRIOR TO PLACING STONE MEETING THE MIN. SPECIFICATIONS:
    - A. TENSILE STRENGTH = 200 LBS.
    - B. PUNCTURE STRENGTH = 80 PSI
    - C. TEAR STRENGTH = 50 LBS.
    - D. BURST STRENGTH = 320 PSI
    - E. ELONGATION = 20%
    - F. EQUIVALENT OPENING SIZE ≤ 0.6 MM
    - G. PERMITTIVITY = 0.001 CM/SEC
  - APPLY ADDITIONAL STONE AS CONDITIONS DEMAND AND REPLENISH STONES WHEN THE DEPTH IS LESS THAN 6". REMOVE AND REPLACE IF STONES BECOMES MUD-LADEN.
  - IMMEDIATELY REMOVE MUD DROPPED, WASHED OR TRACKED ONTO ROADS OR ANY SURFACE WHERE RUNOFF IS NOT CHECKED BY SEDIMENT CONTROLS BY SCRAPING OR SWEEPING.
  - CONSTRUCTION ENTRANCES SHALL NOT BE RELIED UPON TO REMOVE MUD FROM VEHICLES OR TO PREVENT OFF-SITE TRACKING. VEHICLES THAT ENTER AND LEAVE THE CONSTRUCTION SITE SHALL BE RESTRICTED FROM MUDDY AREAS.

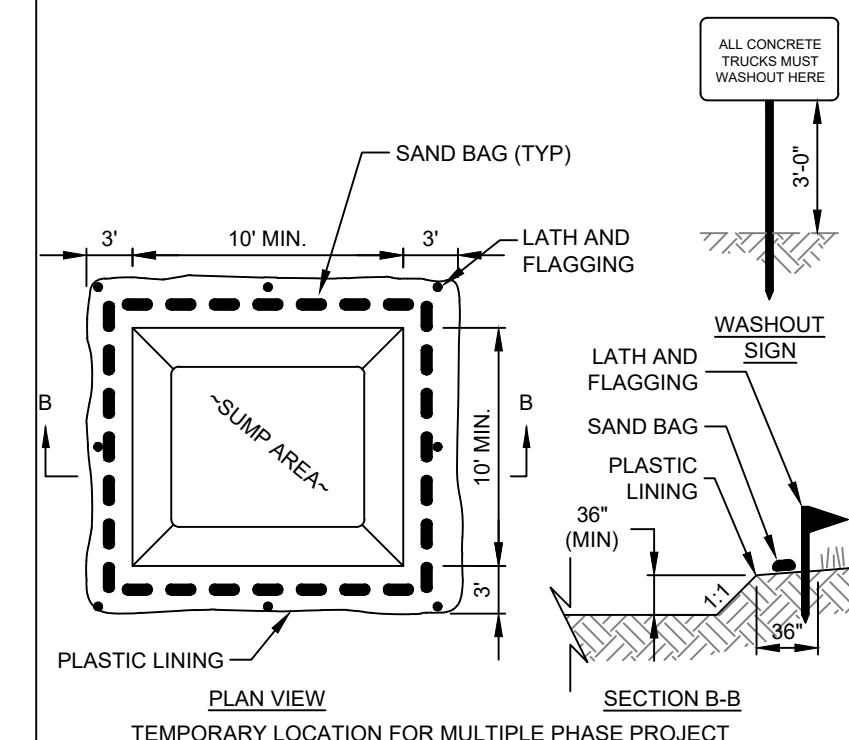
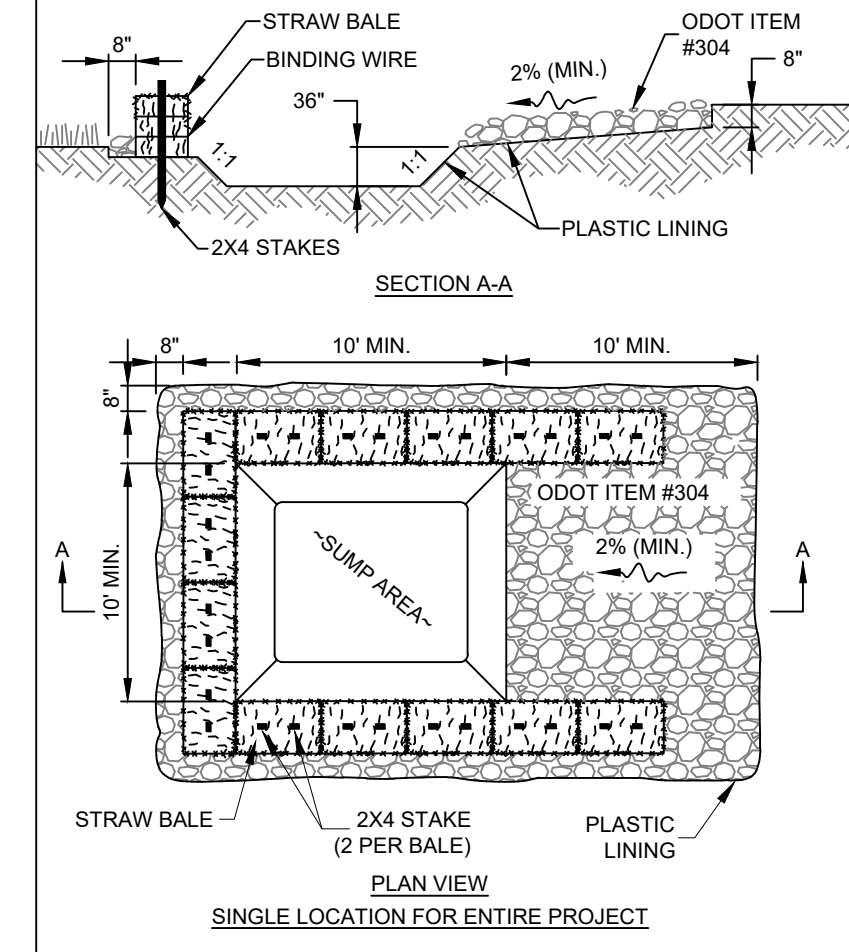
CONSTRUCTION ENTRANCE  
SCALE: NONE

- NOTES:
- THE SEED BED SHALL BE PULVERIZED AND LOOSE TO ENSURE THE SUCCESS OF ESTABLISHING VEGETATION.
  - SOIL AMENDMENTS MAY BE REQUIRED TO ESTABLISH ADEQUATE VEGETATION. PERFORM SOIL TESTS ON THE SITE TO PREDICT THE NEED FOR LIME AND FERTILIZER.
  - APPLY SEED UNIFORMLY. COVER BROADCASTED SEED BY RAKING OR DRAGGING AND THEN LIGHTLY TAMPING INTO PLACE.
  - APPLY MULCHING IMMEDIATELY AFTER SEEDING.
  - SEEDING SHALL BE INSPECTED FOR BARE SPOTS AND WASHOUTS, AND RESEEDED AS NECESSARY.

TEMPORARY SEEDING SPECIES SELECTION

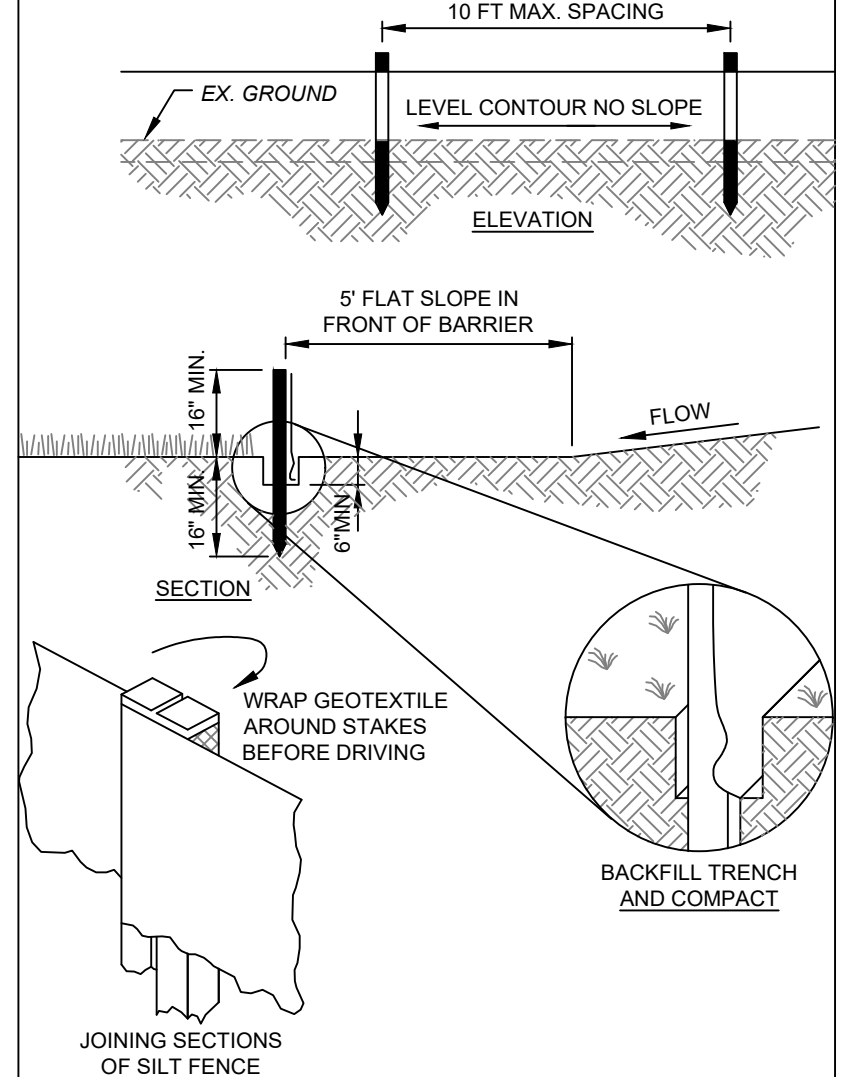
DATES	SPECIES	LB/1,000 SF	LB/AC.
MARCH 1 TO AUGUST 15	OATS	3	128
	TALL FESCUE	1	40
	PERENNIAL RYEGRASS	1	40
AUGUST 16 TO NOVEMBER 1	PERENNIAL RYEGRASS	2	40
	TALL FESCUE	1	40
	RYE	3	112
NOVEMBER 1 TO SPRING	TALL FESCUE	1	40
	PERENNIAL RYEGRASS	1	40
	WHEAT	3	120
	TALL FESCUE	1	40
	PERENNIAL RYEGRASS	1	40
	TALL FESCUE	1	40

TEMPORARY SEEDING DETAIL  
SCALE: NONE



- NOTES:
- WASHOUT PIT SHALL BE LOCATED 100' MINIMUM FROM INLETS, STREAMS, WETLANDS AND ANY OTHER SURFACE WATERS.
  - ALL EXCESS CONCRETE AND CONCRETE WASHOUT, INCLUDING FROM HAND MIXERS AND LIGHT EQUIPMENT, SHALL BE DISPOSED OF IN THE CONCRETE WASHOUT AREA. DISPOSAL OF EXCESS CONCRETE OR CONCRETE WASHOUT ON THE GROUND, OR IN STORM DRAINS, DITCHES OR WATER BODIES, IS PROHIBITED.
  - CONCRETE WASHOUT AREA SHALL BE SUFFICIENT SIZE TO CONTAIN CONCRETE WASTE GENERATED. FOR LARGER SITES, MULTIPLE CONCRETE WASHOUT AREAS MAY BE REQUIRED.
  - IF CONCRETE WASHOUT AREA IS LOCATED AWAY FROM A PAVED SURFACE, CONSTRUCT A GRAVEL ACCESS ROUTE EQUAL IN COMPOSITION TO THE CONSTRUCTION ENTRANCE.
  - PLASTIC LINING SHALL BE DOUBLE-LINED, CONTINUOUS 10-ML POLYETHYLENE SHEETING FREE OF HOLES, TEARS OR OTHER DEFECTS, AND INSTALLED ON A SMOOTH, LEVEL SURFACE, FREE OF ROCKS OR DEBRIS.
  - CONCRETE WASHOUT SIGNAGE SHALL BE CLEARLY VISIBLE AND LOCATED WITHIN 30 FEET OF EACH WASHOUT AREA.
  - CONCRETE WASHOUT AREAS SHALL BE COVERED DURING INCLEMENT WEATHER TO PREVENT OVERFLOWS.
  - PREFABRICATED, PORTABLE AND RE-USABLE CONCRETE WASHOUT CONTAINERS ARE ACCEPTABLE, BUT MUST BE SPECIFICALLY DESIGNED FOR CONCRETE WASHOUT USE.
  - CONCRETE WASHOUT AREA SHALL BE INSPECTED DAILY TO CHECK FOR DAMAGE AND TO DETERMINE IF IT NEEDS CLEANED OR REPLACED. ANY DAMAGE TO THE SIDEWALLS OR POLYETHYLENE SHEETING SHALL BE REPAIRED IMMEDIATELY. THE CONCRETE WASHOUT AREA SHALL BE CLEANED OR REPLACED WHEN IT IS 75% FULL. THE POLYETHYLENE SHEETING SHALL BE REPLACED AFTER EACH CLEANING.
  - SAW CUT CONCRETE, RESIDUE FROM SAW CUT, AND GRINDINGS SHALL BE DISPOSED OF IN THE WASHOUT PIT.

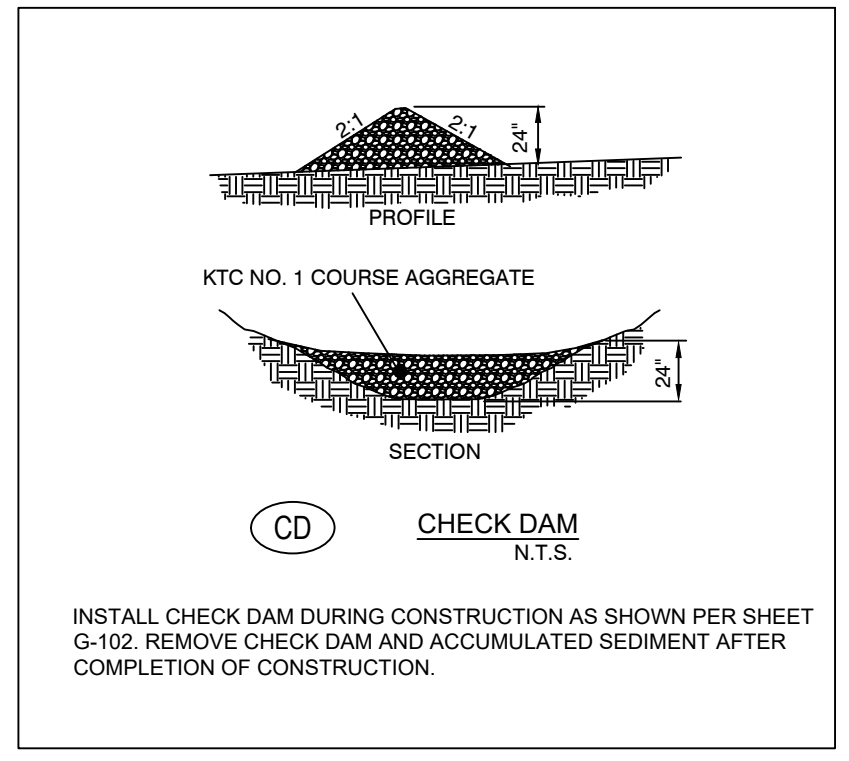
CONCRETE WASHOUT DETAIL  
SCALE: NONE



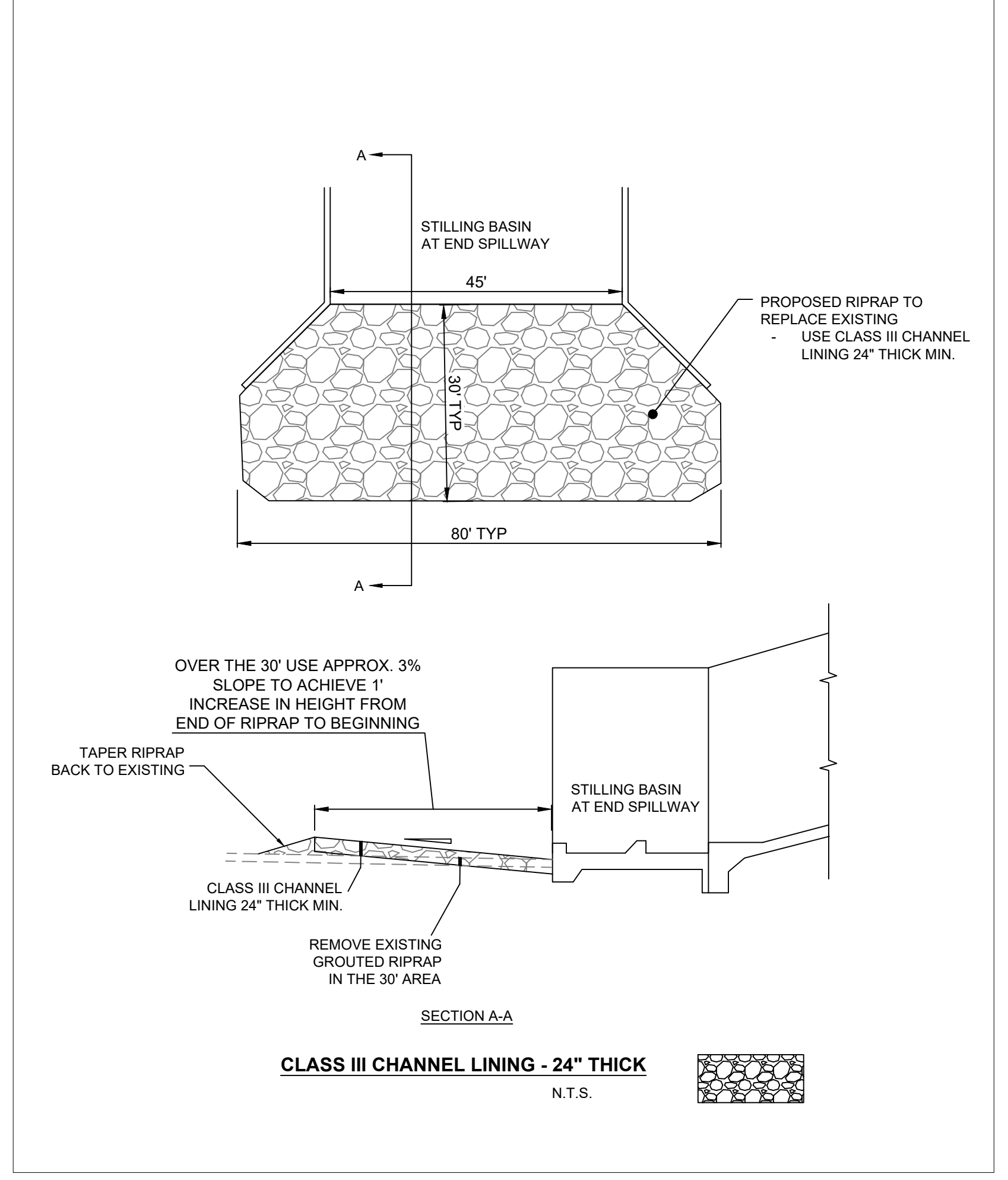
- NOTES:
- PRESERVE VEGETATION FOR 5 FEET, OR AS MUCH AS POSSIBLE, UPSLOPE FROM THE SILT FENCE. IF VEGETATION IS REMOVED, IT SHALL BE RE-ESTABLISHED WITHIN 7 DAYS FROM SILT FENCE INSTALLATION.
  - SILT FENCE SHALL ALLOW RUNOFF TO PASS ONLY AS DIFFUSE FLOW THROUGH THE GEOTEXTILE. PERFORM ONE OF THE FOLLOWING IF RUNOFF OVERTOPS THE SILT FENCE, FLOWS UNDER OR AROUND THE ENDS, OR IN ANY OTHER WAY BECOMES A CONCENTRATED FLOW:
    - CHANGE THE LAYOUT OF THE SILT FENCE.
    - REMOVE ACCUMULATED SEDIMENT.
    - INSTALL OTHER PRACTICES.

FABRIC PROPERTIES	VALUES	TEST METHOD
GRAB TENSILE STRENGTH	90 LB. MIN	ASTM D-1682
MULLEN BURST STRENGTH	190 PSI MIN	ASTM D-3786
SLURRY FLOW RATE	0.3 GAL./MIN./S.F. MAX.	
EQUIVALENT OPENING SIZE	40-80	US STD. SIEVE CW-02215
ULTRAVIOLET RADIATION STABILITY	90% MIN	ASTM-G-26

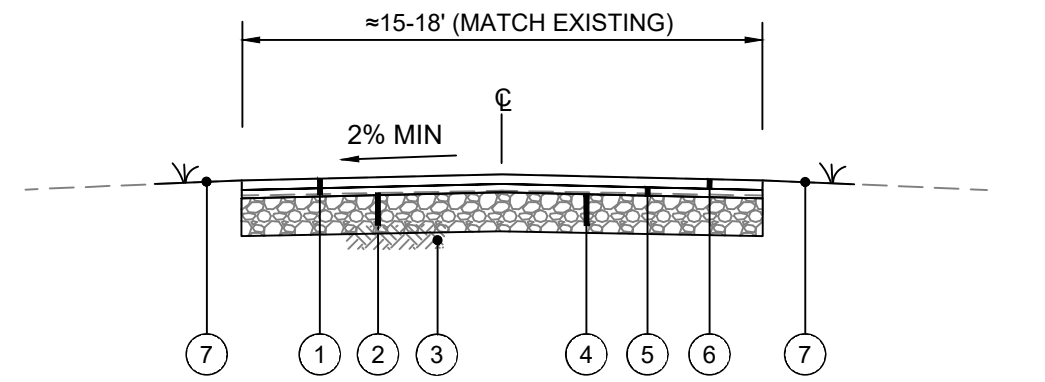
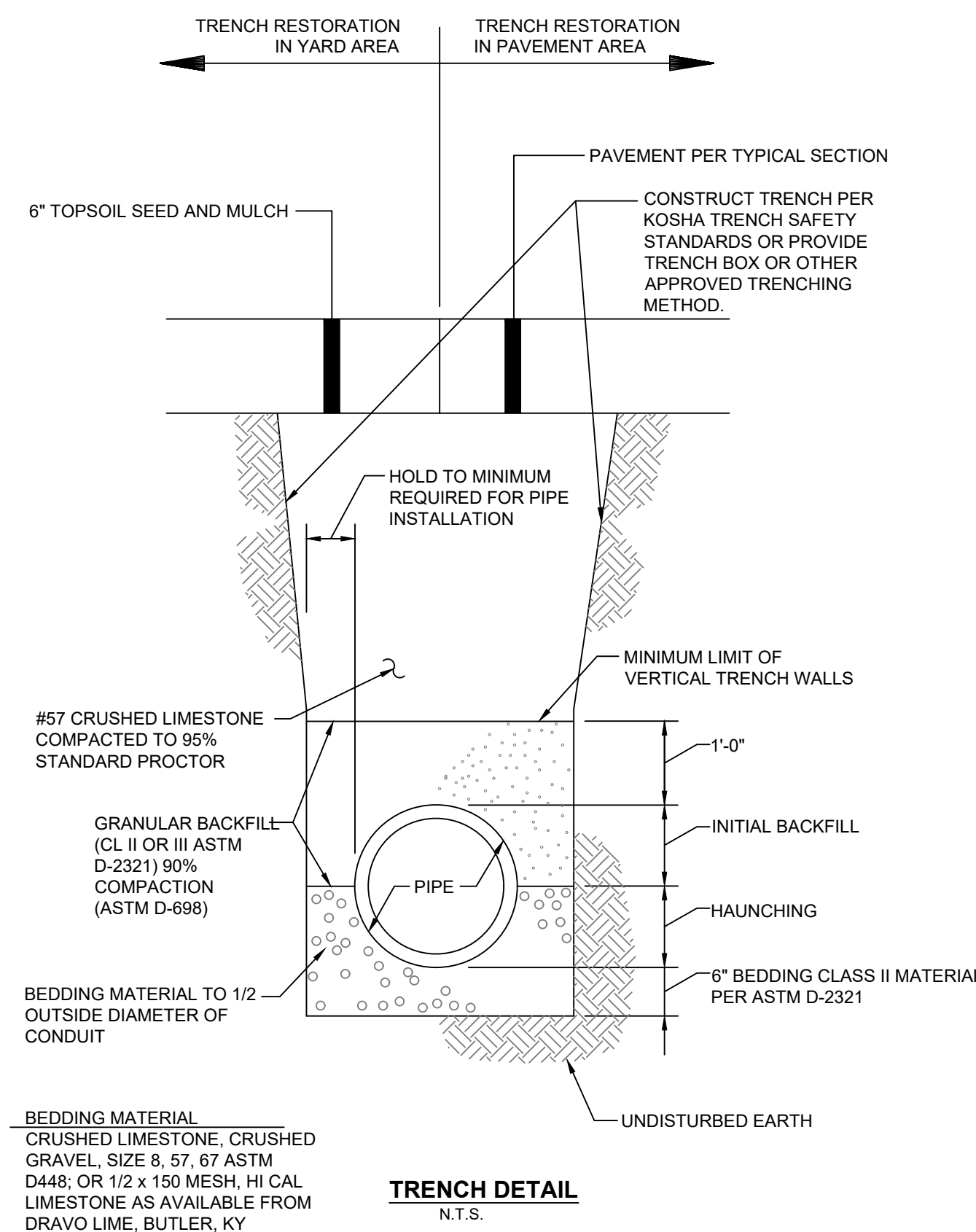
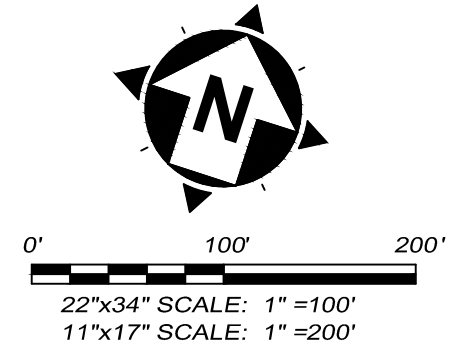
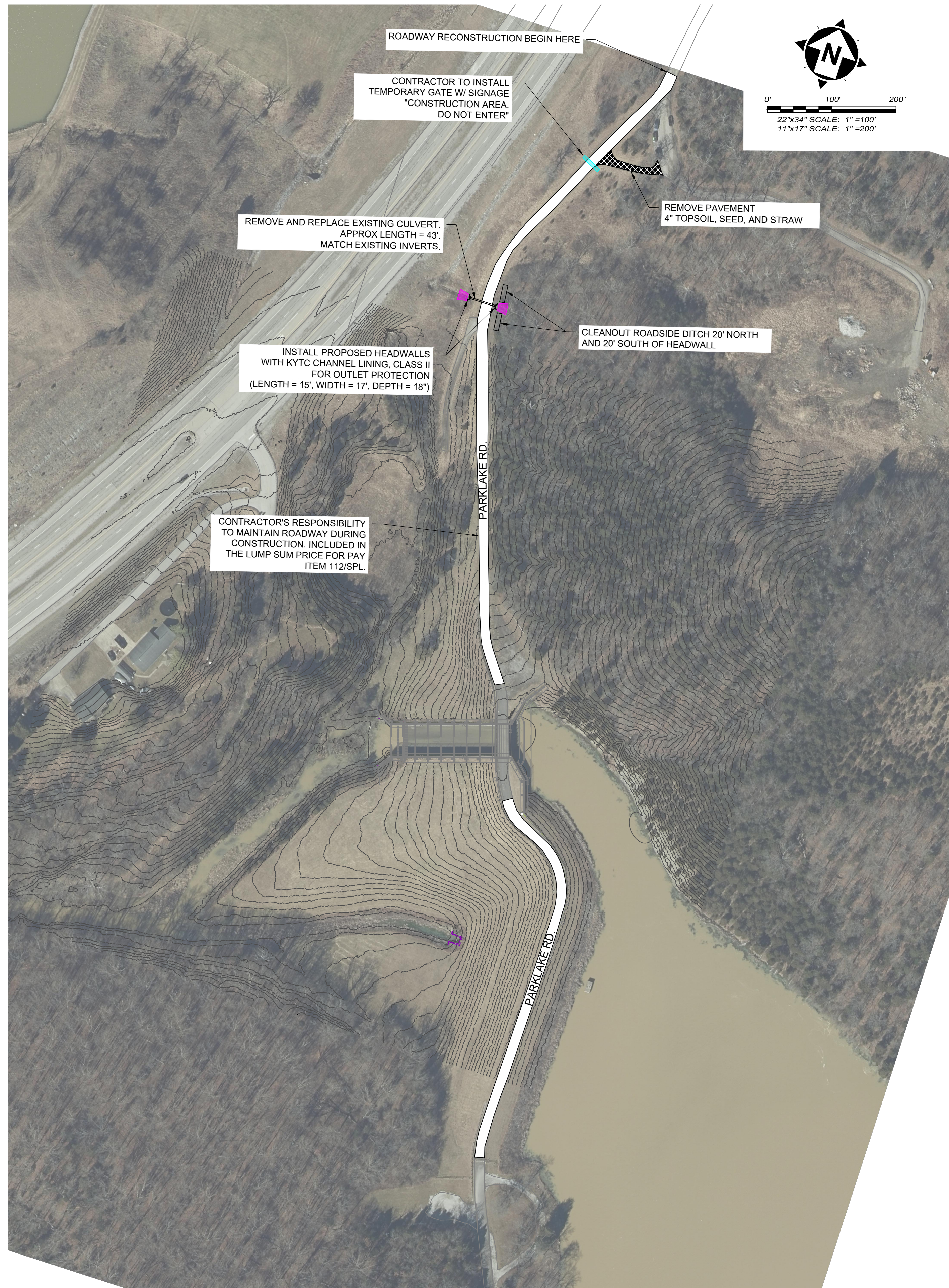
SILT FENCE  
SCALE: NONE



INSTALL CHECK DAM DURING CONSTRUCTION AS SHOWN PER SHEET G-102. REMOVE CHECK DAM AND ACCUMULATED SEDIMENT AFTER COMPLETION OF CONSTRUCTION.



z:\project\_files\ca-c2\campbellcounty\242762 - aj jolly dam\roadway\sheet\c242762.dwg 4/20/2026 5:37 PM



- 1 REMOVE EXISTING ASPHALT PAVEMENT
- 2 EXCAVATION FOR GRANULAR BASE
- 3 ITEM 207 - SUBGRADE RESHAPING AND COMPACTION OF EXISTING CLAY SUBGRADE - TRIMMED AND ROLLED SMOOTH
- 4 ITEM 302 - 6" CRUSHED STONE BASE
- 5 ITEM 402/403 - 1-1/2" ASPHALT PAVEMENT INTERMEDIATE LEVEL COURSE
- 6 ITEM 402/403 - 1-1/2" ASPHALT PAVEMENT SURFACE WITH ARAMID FIBER REINFORCEMENT (FORTA-FI OR ACE FIBER)
- 7 ITEM SPL - 4" TOPSOIL, SEED AND MULCH (KEEP TO A MINIMUM)

REVISION	BY	DATE	PIPE		DIMENSIONS							CLASS A CONC C. Y.	REIN. STEEL LBS.
			DIA. OR EQUIV. DIA.	SHAPE	C	E	F	L	W	T			
			12"	○	1'-9"	2'-6"	2'-3"	3'-6"	4'-0"	2"	0.58	7	
			15"	○	2'-0"	2'-9"	2'-9"	4'-0"	4'-9"	2 1/4"	0.68		
			15"	○	1'-9"	3'-0"	2'-6"	3'-6"	4'-9"	2 1/2"	0.93		
			18"	○	2'-3"	3'-0"	3'-6"	4'-6"	5'-3"	2 1/2"	0.89	8	
			18"	○	2'-0"	3'-6"	3'-0"	4'-0"	5'-6"	2 3/4"	1.14		
			21"	○	2'-6"	3'-3"	4'-0"	5'-0"	6'-0"	3"	1.07	9	
			21"	○	2'-3"	3'-0"	3'-6"	4'-6"	6'-0"	3"	1.35	8	
			24"	○	2'-9"	3'-6"	4'-6"	5'-6"	6'-6"	3"	1.35	8	
			24"	○	2'-6"	4'-0"	4'-0"	5'-0"	6'-9"	3 1/4"	1.30	9	
			27"	○	3'-0"	3'-9"	5'-0"	6'-0"	7'-0"	3 1/4"	1.57		
			27"	○	2'-9"	4'-6"	4'-3"	5'-3"	7'-3"	3 1/2"	1.51	10	

**NOTES**

1. DIMENSIONS AND QUANTITIES ARE BASED ON CONCRETE PIPE AND WILL VARY INSIGNIFICANTLY FOR ALTERNATE PIPE MATERIALS.
2. REINFORCING STEEL: MINIMUM GRADE 40, BARS EVENLY SPACED.
3. 6 - NO. 4 x 1'-0" DOWEL BARS.
4. 2 - NO. 4 x (E DIMENSION MINUS 4").
5. SLOPES SHALL BE WARPED TO FIT HEADWALL WHEN PIPE IS SKEWED AND/OR NORMAL SLOPE VARIES FROM 2:1.
6. VOLUME DISPLACED BY PIPE COMPUTED USING INSIDE DIAMETER OF PIPE.
7. WING ANGLES AND/OR DIMENSIONS MAY BE ALTERED DURING CONSTRUCTION TO ACCOMMODATE FLOW OF WATER.
8. APRON BETWEEN WINGS SHALL BE SLOPED IN DIRECTION OF FLOW EQUAL TO SLOPE OF PIPE. FRONT FACE OF HEADWALL SHALL REMAIN VERTICAL.
9. HEADWALLS ARE FOR CIRCULAR, ARCH, AND HORIZONTAL ELLIPTICAL 12" - 27" EQUIVALENT PIPE SIZES. SEE CURRENT KDOT STD. DWS. RD-016, FOR NON-CIRCULAR PIPE EQUIVALENT SIZES.
10. ENCLOSURE GRATE SHALL BE INSTALLED PER DETAIL STM-19 FOR PIPE SIZES 24 INCHES DIAMETER AND UNDER.

**SLOPED & FLARED HEADWALLS (12"-27" PIPE)**  
N.T.S.  
(REFERENCE KYTC STANDARD DRAWING RDH-020)

REVISION	BY	DATE

SANITATION DISTRICT NO. 1  
1045 Edison Drive  
FT. Wright, Kentucky 41017  
Ph: (859) 578-7460  
Fax: (859) 331-2436

DATE: MAY 2010	STANDARD DRAWING NO. STM-16
----------------	-----------------------------

**verdantas**

4420 COOPER ROAD  
SUITE 200  
BLUE ASH, OH 45242

STATE: KY

DESIGNED BY: R. SEITZINGER

DRAWN BY: A. WALSH

CHECKED BY: R. SEITZINGER

PROJECT NO.: 242762

NO. A B C D E F

REVISION

30% DESIGN

60% DESIGN

SUBMITTAL FOR PERMIT (NOT FOR CONSTRUCTION)

KDOT/ADS REVIEW CHANGE (NOT FOR CONSTRUCTION)

ISSUE FOR BID

ADDENDUM 1

DATE: MARCH 31, 2026

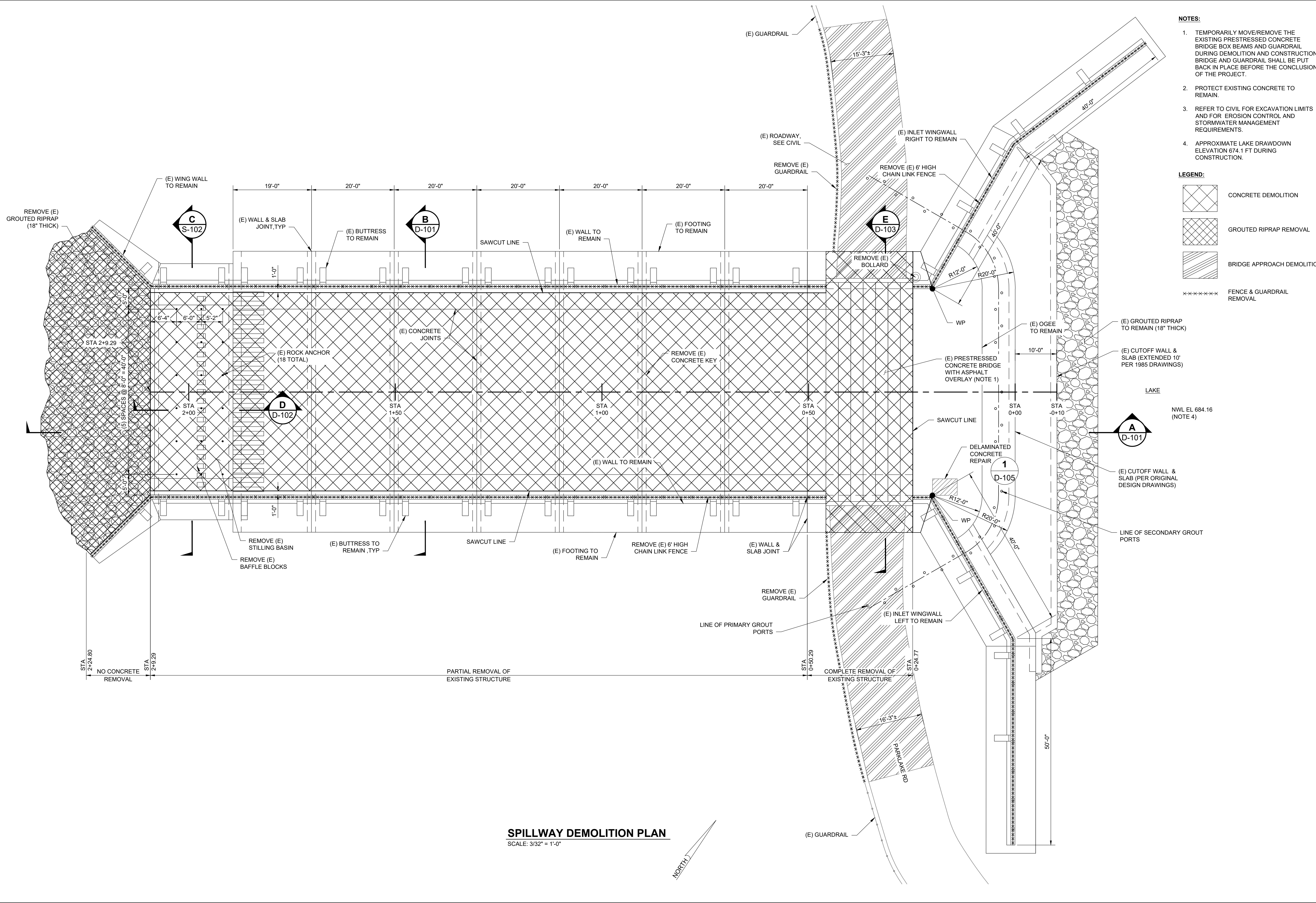
SCALE: AS NOTED

SHEET: G-104

**AJ JOLLY DAM REPAIR**  
CAMPBELL COUNTY, KY

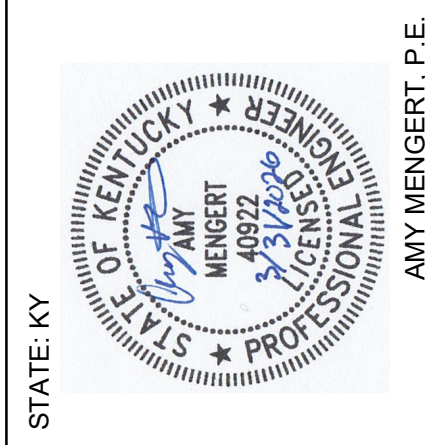
**ROADWAY RECONSTRUCTION**

z:\project\_files\ca-campbellcounty\242762 - aj jolly dam\ca\dwg\sheet\general & demous-100.dwg 4/20/2026 5:37 PM



- NOTES:**
1. TEMPORARILY MOVE/REMOVE THE EXISTING PRESTRESSED CONCRETE BRIDGE BOX BEAMS AND GUARDRAIL DURING DEMOLITION AND CONSTRUCTION. BRIDGE AND GUARDRAIL SHALL BE PUT BACK IN PLACE BEFORE THE CONCLUSION OF THE PROJECT.
  2. PROTECT EXISTING CONCRETE TO REMAIN.
  3. REFER TO CIVIL FOR EXCAVATION LIMITS AND FOR EROSION CONTROL AND STORMWATER MANAGEMENT REQUIREMENTS.
  4. APPROXIMATE LAKE DRAWDOWN ELEVATION 674.1 FT DURING CONSTRUCTION.

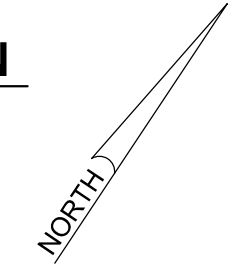
- LEGEND:**
- CONCRETE DEMOLITION
  - GROUDED RIPRAP REMOVAL
  - BRIDGE APPROACH DEMOLITION
  - FENCE & GUARDRAIL REMOVAL

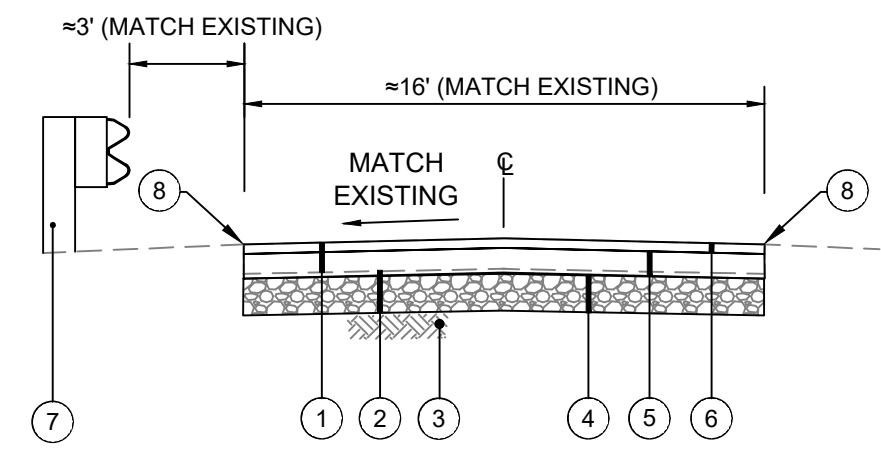


DESIGNED BY	A. MENGERT
DRAWN BY	C. HAGLER
CHECKED BY	M. GRAESER
PROJECT NO.	242762
STATE: KY	

No.	REVISION
A	30% DESIGN
B	60% DESIGN
C	SUBMITTAL FOR PERMIT (NOT FOR CONSTRUCTION)
D	KCOHWBDS REVIEW CHANGE (NOT FOR CONSTRUCTION)
E	ISSUE FOR BID
F	ADDENDUM 1

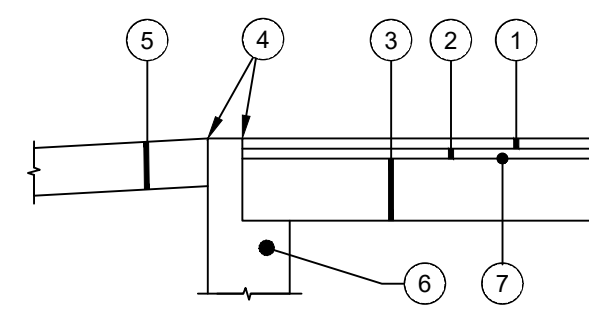
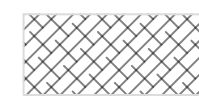
**SPILLWAY DEMOLITION PLAN**  
 SCALE: 3/32" = 1'-0"





- 1 REMOVE EXISTING ASPHALT PAVEMENT
- 2 EXCAVATION FOR GRANULAR BASE
- 3 ITEM 207\* - SUBGRADE RESHAPING AND COMPACTION OF EXISTING CLAY SUBGRADE - TRIMMED AND ROLLED SMOOTH
- 4 ITEM 302 - 7" DENSE GRADED AGGREGATE (DGA) - FOR ASPHALT SUBBASE
- 5 ITEM 402/403 - 6" ASPHALT PAVEMENT BASE COURSE
- 6 ITEM 402/403 - 1-1/2" ASPHALT PAVEMENT SURFACE WITH ARAMID FIBER REINFORCEMENT (FORTA-FI OR ACE FIBER)
- 7 ITEM SPL - REMOVE EXISTING GUARDRAIL AND REPLACE WITH NEW GUARDRAIL.
- 8 SEAL JOINT WHERE EXISTING MEETS PROPOSED WITH HOT POURED JOINT SEALANT (INCIDENTAL TO ITEM 402/403)

**ASPHALT RECONSTRUCTION OF BRIDGE APPROACHES - SECTION** N.T.S.

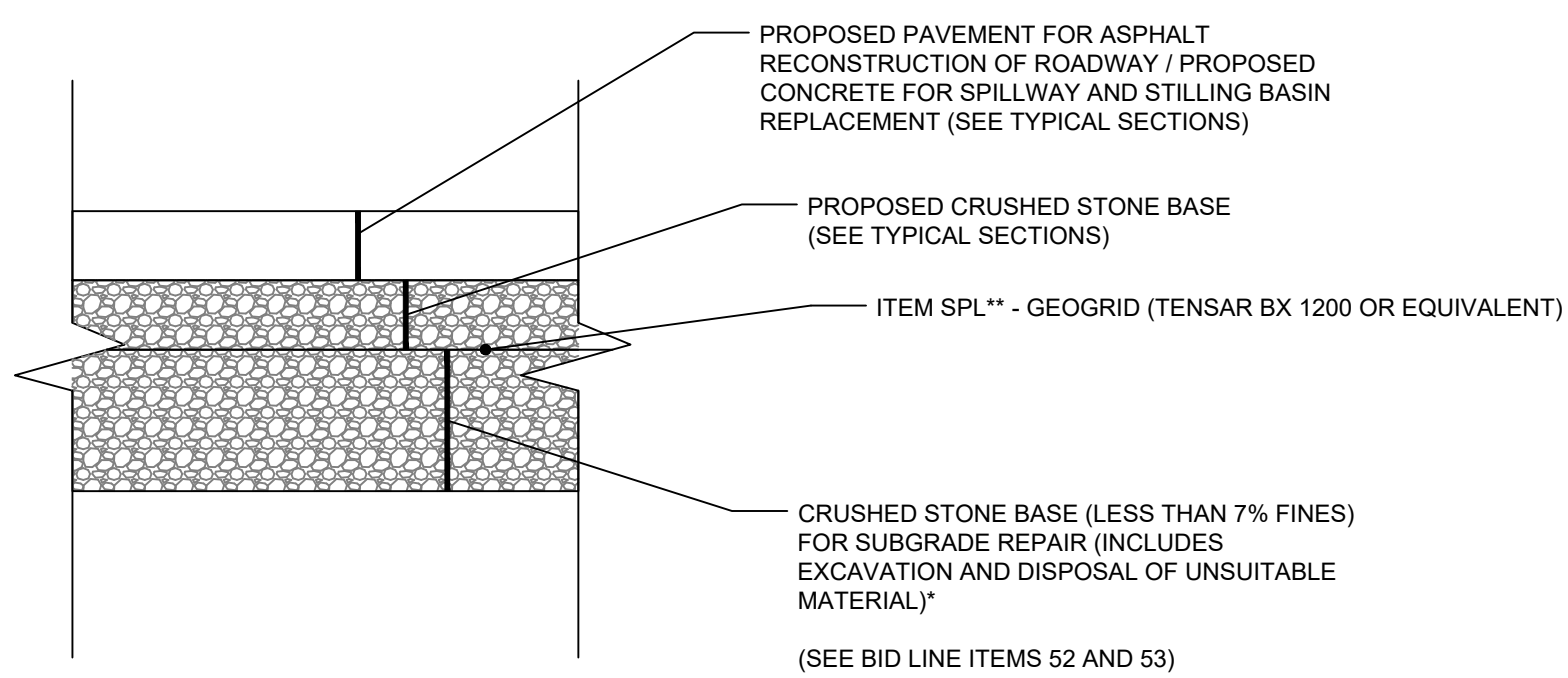


- 1 ITEM 402/403 - 1.5" ASPHALT SURFACE COURSE
- 2 ITEM 402/403 - 1.5" ASPHALT LEVELING COURSE
- 3 BOX BEAM BRIDGE DECK (REMOVED AND RESET)
- 4 SEAL JOINT WITH HOT POURED JOINT SEALANT (INCIDENTAL TO ITEM 402/403)
- 5 PROPOSED ASPHALT ROADWAY - SEE ASPHALT ROADWAY SECTION DETAIL
- 6 ABUTMENT WALL - SEE STRUCTURAL
- 7 WATERPROOFING - ROYSTON 10A EASY PAVE BY CHASE (OR APPROVED EQUAL)

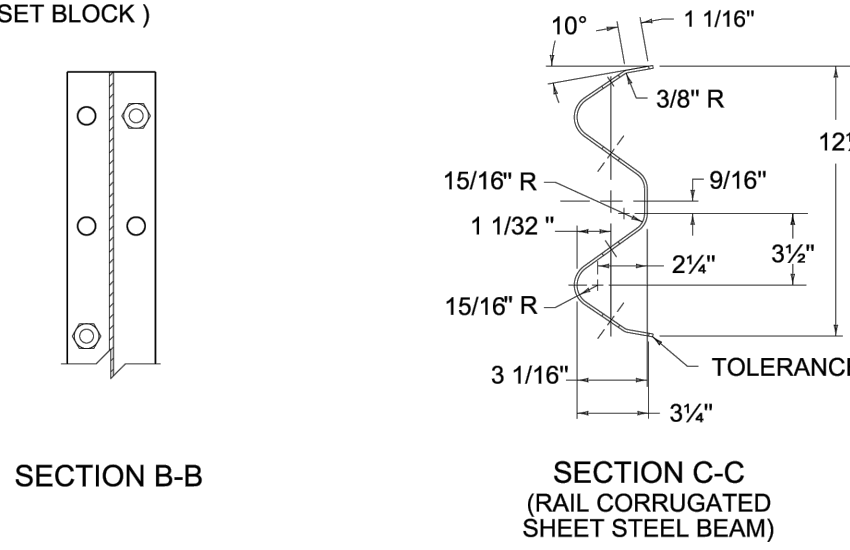
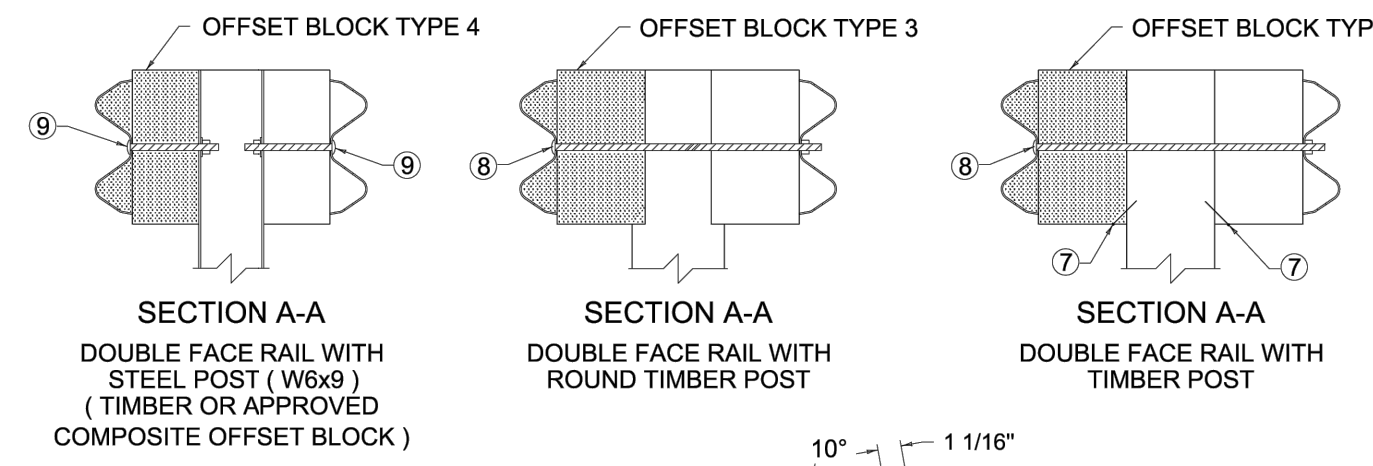
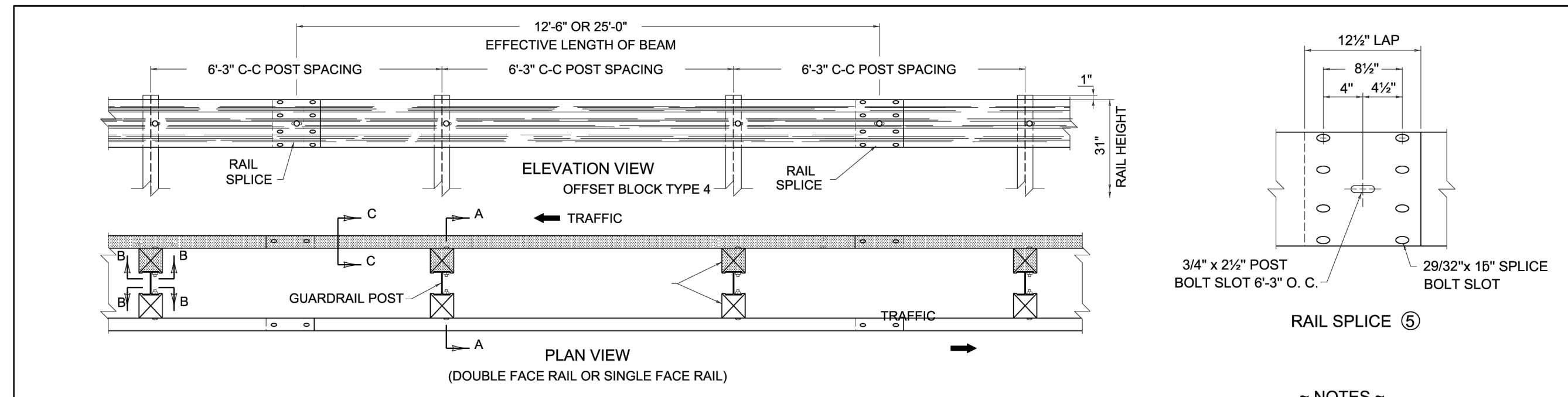
**ASPHALT OVERLAY FOR BRIDGE DECK - SECTION** N.T.S.

\*NOTE:  
SUBGRADE RESHAPING AND COMPACTION SHALL BE PER KTC ITEM 207. A PROOF ROLL WILL BE REQUIRED PRIOR TO PLACING STONE BASE OR CONCRETE PAVEMENT. SOFT OR YIELDING SUITABLE SUBGRADE MATERIAL LACKING PROPER COMPACTION OR MOISTURE CONTENT SHALL SCARIFIED, AERATED, DRIED, AND RECOMPACTED. SOFT OR YIELDING UNSUITABLE SUBGRADE SHALL BE REMOVED AND REPLACED AS DIRECTED BY THE ENGINEER.

\*\* - CONTINGENCY ITEM TO BE USED ONLY AS DIRECTED BY THE ENGINEER

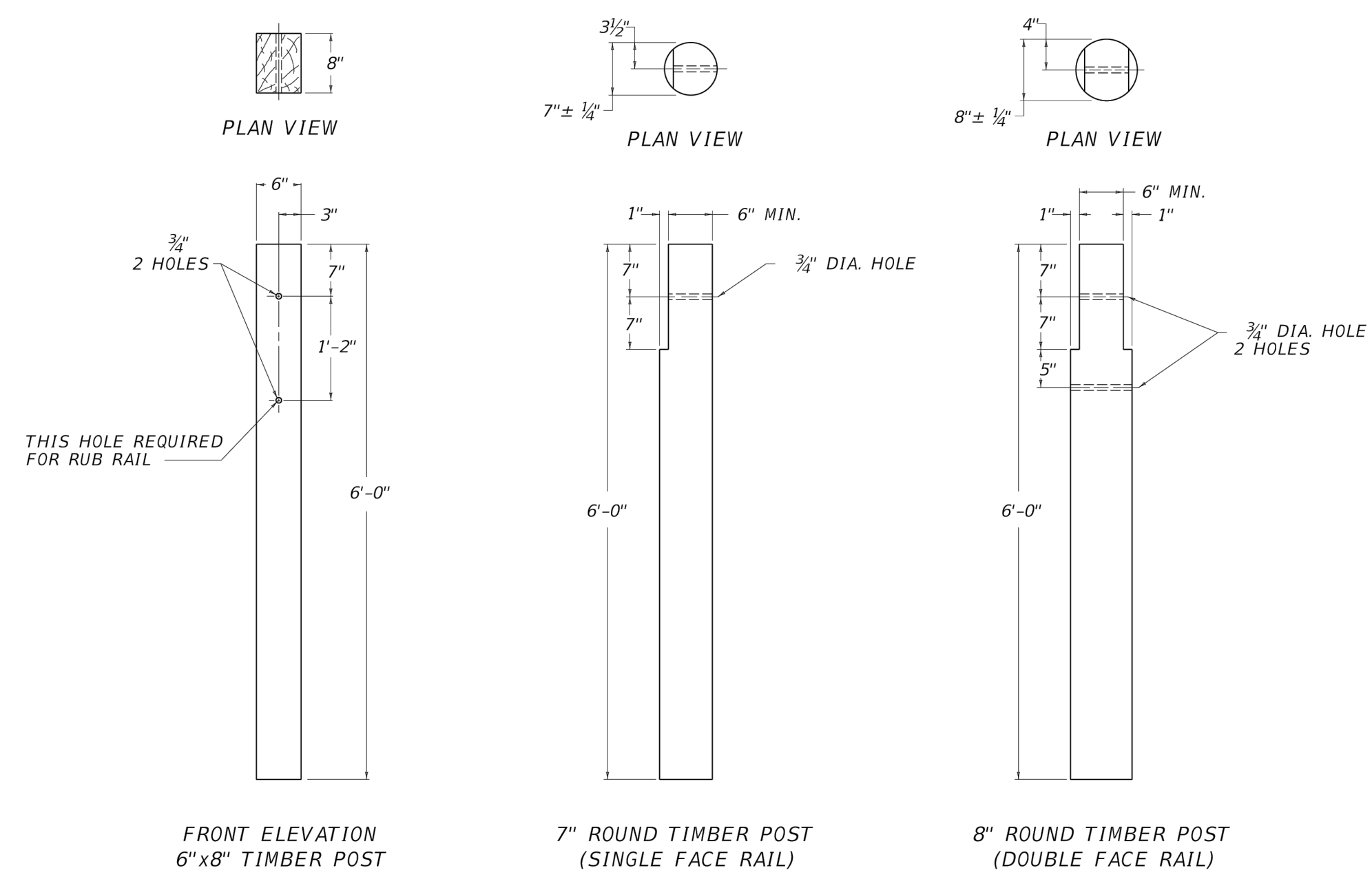


**SUBGRADE REPAIR DETAIL\*** N.T.S.



- ~ NOTES ~
- BID ITEM AND UNIT TO BID GUARDRAIL-STEEL W BEAM-S FACE OR GUARDRAIL-STEEL W BEAM-D FACE LF
1. DIMENSIONAL TOLERANCES NOT SHOWN OR IMPLIED ARE INTENDED TO BE THOSE CONSISTENT WITH THE PROPER FUNCTIONING OF THE PART, INCLUDING ITS APPEARANCE AND ACCEPTED MANUFACTURING PRACTICES.
  2. THE RAIL ELEMENT SHALL COMPLY WITH AASHTO M-180 CLASS A, TYPE II.
  3. ALL LAPS SHALL BE PLACED IN THE DIRECTION OF TRAFFIC FLOW.
  4. TOLERANCE + 1/4", -1/4"
  5. 8-5/8" x 1" LONG BUTTON HEAD BOLTS AND HEX HEAD RECESS NUTS REQUIRED FOR EACH RAIL SPLICE.
  6. LENGTH EQUALS POST AND BLOCK WIDTH PLUS 2" FOR BOLT OR 2 1/2" FOR THREADED ROD.
  7. GALVANIZED STEEL 10# COMMON COATED NAIL (DRIVE NAIL AT THE TOP OR BOTTOM CENTER OF BLOCK AND POST AFTER BOLT IS INSTALLED).
  8. 5/8" x 6" STEEL THREADED ROD AND TWO (2) HEX HEAD NUTS OR 5/8" x 6" BUTTON OR HEX HEAD BOLT AND HEX HEAD NUT.
  9. 5/8" x 8" BUTTON HEAD BOLT, HEX HEAD RECESS NUT AND ONE (1) ROUND WASHER (TYP.), BOLT SHALL HAVE A MINIMUM THREAD LENGTH OF 2".
  10. BOTH 12'-6" AND 25' LENGTHS OF "W" BEAM GUARDRAIL SECTIONS WILL BE PERMITTED UNLESS OTHERWISE DIRECTED BY THE ENGINEER.

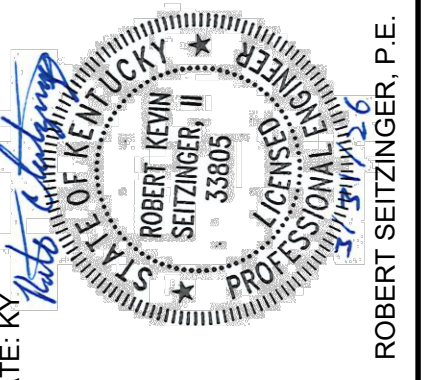
COMMONWEALTH OF KENTUCKY DEPARTMENT OF HIGHWAYS	GUARDRAIL	STEEL BEAM ("W" BEAM)	STANDARD DRAWING NUMBER RBR-001-13
--	-----------	-----------------------	---------------------------------------



**FRONT ELEVATION OFFSET BLOCK TYPE 3 (6" X 8" TIMBER) (FOR USE WITH RECTANGULAR AND ROUND POSTS)**

COMMONWEALTH OF KENTUCKY DEPARTMENT OF HIGHWAYS	GUARDRAIL	TIMBER POSTS	STANDARD DRAWING NUMBER RBR-016-05
--	-----------	--------------	---------------------------------------

REVISION	NO.	DATE	BY	REASON
	A	09-22-2023	R. SEITZINGER	30% DESIGN
	B	10-17-2023	A. WALSH	60% DESIGN
	C	12-22-2023	R. SEITZINGER	SUBMITTAL FOR PERMIT (NOT FOR CONSTRUCTION)
	D	02-23-2024	R. SEITZINGER	KCO/ADS REVIEW CHANGE (NOT FOR CONSTRUCTION)
	E	03-21-2024	R. SEITZINGER	ISSUE FOR BID
	F			ADDENDUM 1



DESIGNED BY R. SEITZINGER	CHECKED BY R. SEITZINGER
DRAWN BY A. WALSH	PROJECT NO. 242762

STATE: KY	REVISION
CHKD BY	NO.
DATE	A
	B
	C
	D
	E
	F

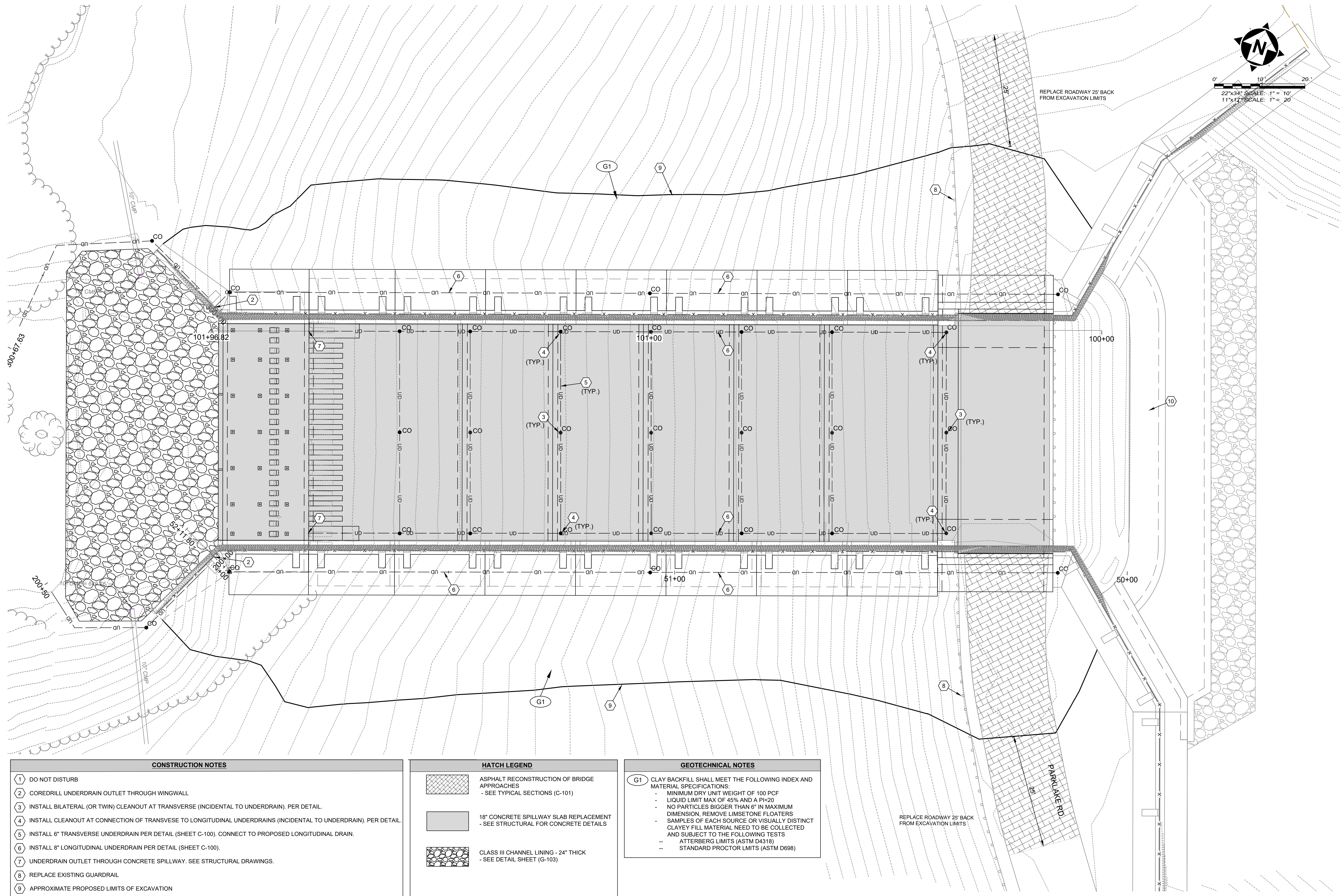
**AJ JOLLY DAM REPAIR  
CAMPBELL COUNTY, KY  
ROADWAY DETAILS**

DATE  
MARCH 31, 2026

SCALE  
AS NOTED

SHEET  
C-101

z:\project files\ca-campbellcounty\242762 - aj jolly dam\ca-campbellcounty\sheet\c-400.dwg 4/21/2026 1:15 PM



STATE: KY  
 DESIGNER: R. SEITZINGER  
 DRAWN BY: A. WALSH  
 CHECKED BY: R. SEITZINGER  
 PROJECT NO.: 242762

CHD BY	DATE	REVISION
R. SEITZINGER	09-22-2025	A 30% DESIGN
A. WALSH	10-17-2025	B 60% DESIGN
R. SEITZINGER	12-22-2025	C SUBMITTAL FOR PERMIT (NOT FOR CONSTRUCTION)
R. SEITZINGER	02-23-2026	D KDD/ADS REVIEW CHANGE (NOT FOR CONSTRUCTION)
R. SEITZINGER	03-21-2026	E ISSUE FOR BID
R. SEITZINGER	03-21-2026	F ADDENDUM 1

**AJ JOLLY DAM REPAIR  
 CAMPBELL COUNTY, KY  
 PROPOSED PLAN**

DATE: MARCH 31, 2026  
 SCALE: AS NOTED  
 SHEET: C-400

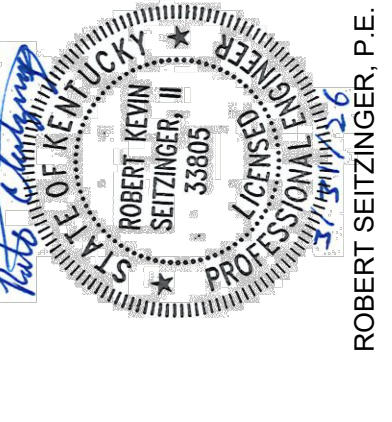
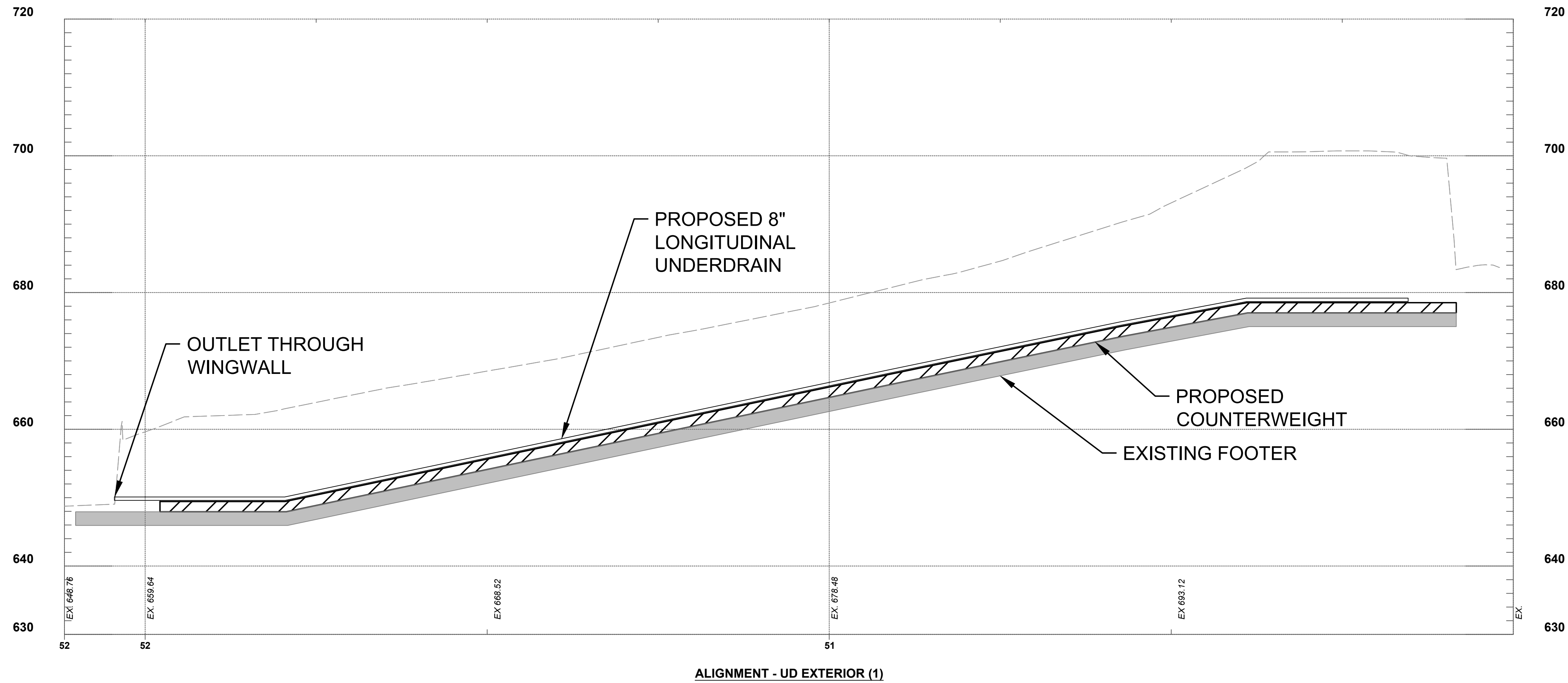
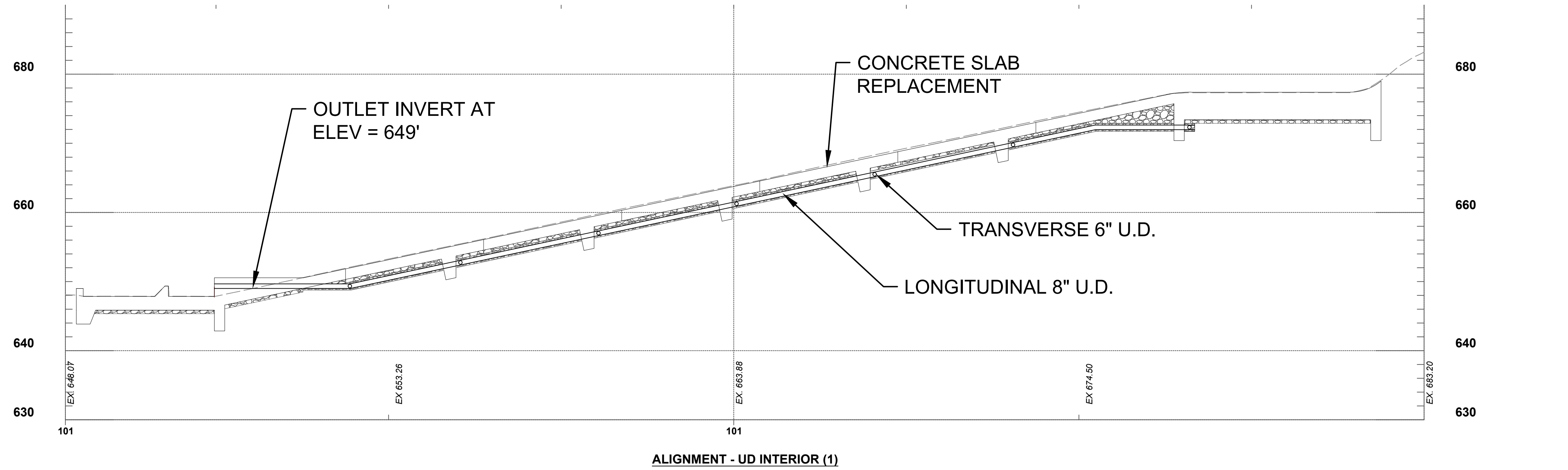
CONSTRUCTION NOTES	
1	DO NOT DISTURB
2	COREDRIILL UNDERDRAIN OUTLET THROUGH WINGWALL
3	INSTALL BILATERAL (OR TWIN) CLEANOUT AT TRANSVERSE (INCIDENTAL TO UNDERDRAIN). PER DETAIL.
4	INSTALL CLEANOUT AT CONNECTION OF TRANSVERSE TO LONGITUDINAL UNDERDRAINS (INCIDENTAL TO UNDERDRAIN). PER DETAIL.
5	INSTALL 6" TRANSVERSE UNDERDRAIN PER DETAIL (SHEET C-100). CONNECT TO PROPOSED LONGITUDINAL DRAIN.
6	INSTALL 8" LONGITUDINAL UNDERDRAIN PER DETAIL (SHEET C-100).
7	UNDERDRAIN OUTLET THROUGH CONCRETE SPILLWAY. SEE STRUCTURAL DRAWINGS.
8	REPLACE EXISTING GUARDRAIL
9	APPROXIMATE PROPOSED LIMITS OF EXCAVATION
10	GROUT CURTAIN. SEE STRUCTURAL DRAWINGS.

HATCH LEGEND	
	ASPHALT RECONSTRUCTION OF BRIDGE APPROACHES - SEE TYPICAL SECTIONS (C-101)
	18" CONCRETE SPILLWAY SLAB REPLACEMENT - SEE STRUCTURAL FOR CONCRETE DETAILS
	CLASS III CHANNEL LINING - 24" THICK - SEE DETAIL SHEET (G-103)

GEOTECHNICAL NOTES	
G1	CLAY BACKFILL SHALL MEET THE FOLLOWING INDEX AND MATERIAL SPECIFICATIONS: - MINIMUM DRY UNIT WEIGHT OF 100 PCF - LIQUID LIMIT MAX OF 45% AND A PI-20 - NO PARTICLES BIGGER THAN 6" IN MAXIMUM DIMENSION, REMOVE LIMESTONE FLOATERS - SAMPLES OF EACH SOURCE OR VISUALLY DISTINCT CLAYEY FILL MATERIAL NEED TO BE COLLECTED AND SUBJECT TO THE FOLLOWING TESTS -- ATTERBERG LIMITS (ASTM D4318) -- STANDARD PROCTOR LIMITS (ASTM D698)

REPLACE ROADWAY 25' BACK FROM EXCAVATION LIMITS

PARK LAKE RD



STATE: KY  
DESIGNED BY: R. SEITZINGER  
DRAWN BY: A. WALSH  
CHECKED BY: R. SEITZINGER  
PROJECT NO.: 242762

CHKD BY	DATE	REVISION
R. SEITZINGER	09-22-2023	A 30% DESIGN
A. WALSH	10-17-2023	B 60% DESIGN
R. SEITZINGER	12-22-2023	C SUBMITTAL FOR PERMIT (NOT FOR CONSTRUCTION)
R. SEITZINGER	02-23-2024	D KCOH/ODS REVIEW CHANGE (NOT FOR CONSTRUCTION)
R. SEITZINGER	03-21-2024	E ISSUE FOR BID
R. SEITZINGER	03-21-2024	F ADDENDUM 1

AJ JOLLY DAM REPAIR  
CAMPBELL COUNTY, KY  
**UNDERDRAIN PROFILES 1**

z:\project\_files\ca-c2\campbellcounty\242762 - aj jolly dam\cadwg\sheet\civil\c-401.dwg 4/20/2026 5:35 PM