

C:\CYCADL_DRIVES_ZIPPROJECT_FILES\IA-LZ\JEFFERSONVILLE\JEFFERSONVILLE - LIFT STATION REPAIR\CACAD\SHEETS AND PLANS\43089 - LS LOCATION MAP.DWG - LS MAP - 3/31/2026 10:10:38 AM - ADAM DAWSON



BID

verdantas

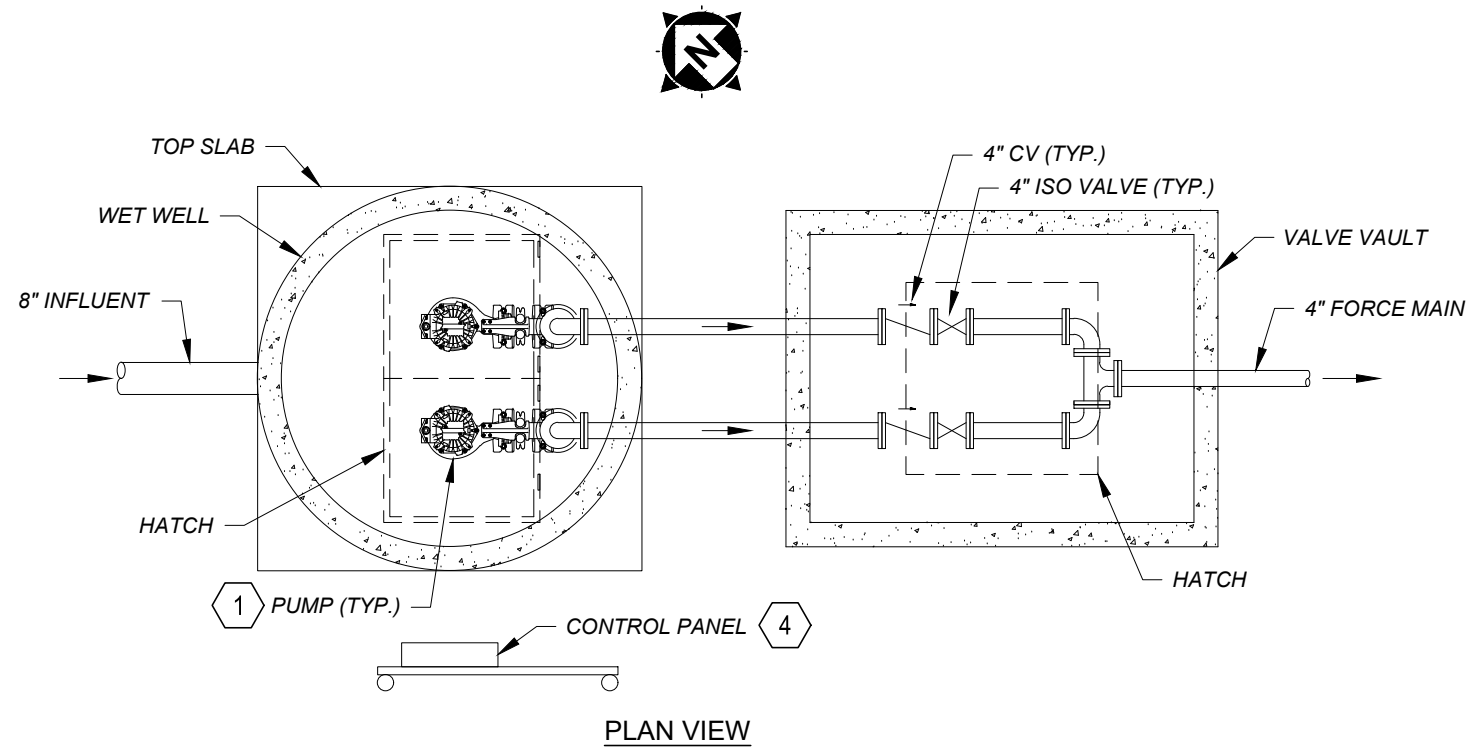
ISSUED FOR:	BIDDING
ISSUE DATE:	3/31/2026
SCALE:	AS SHOWN
DESIGNED BY:	BRA
DRAWN BY:	AGD
CHECKED BY:	BRA

VILLAGE OF JEFFERSONVILLE
LIFT STATION REPAIR PROJECT
 - JEFFERSONVILLE, OHIO -

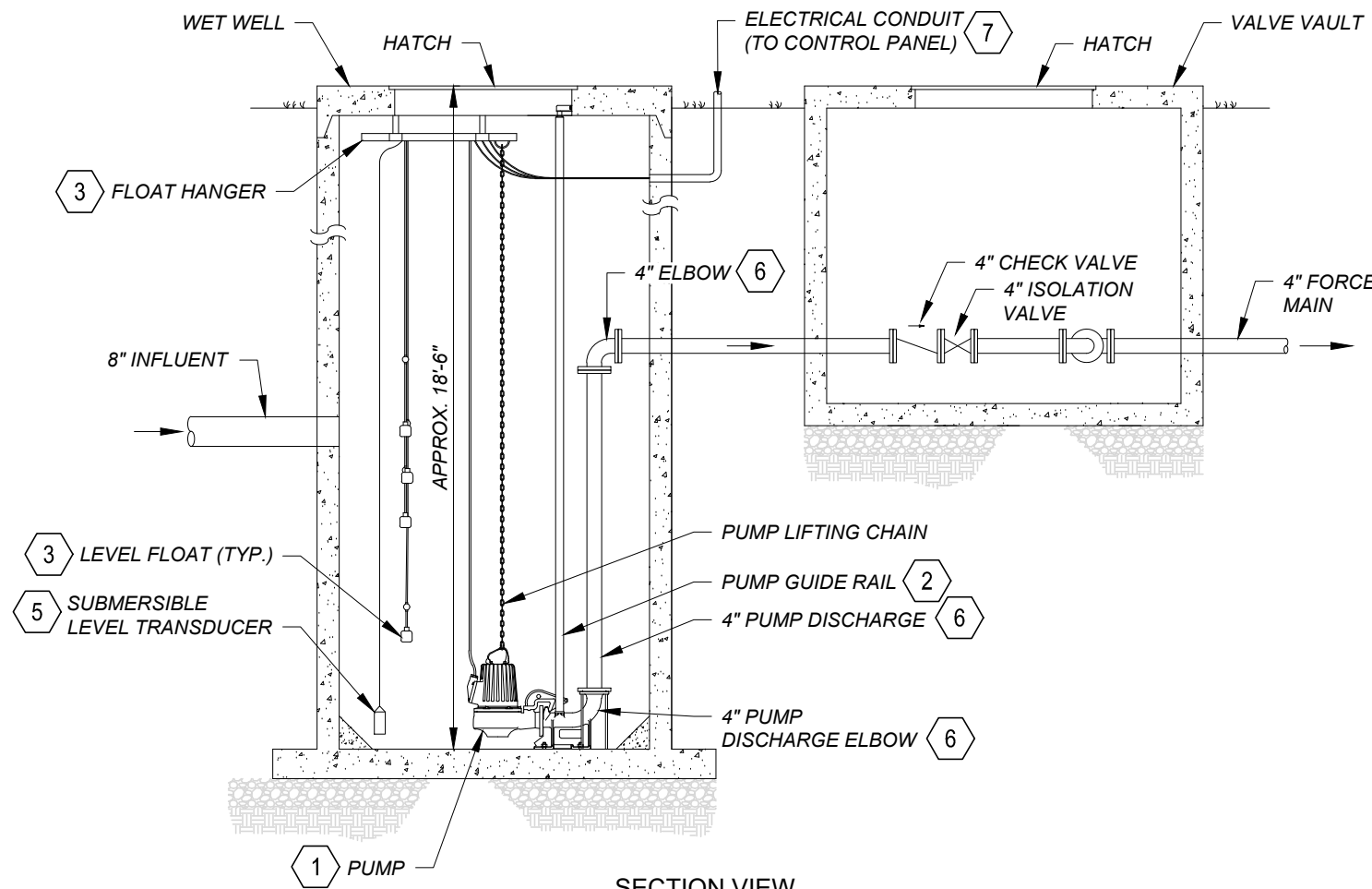
LOCATION MAP

PROJECT NO.	43089
DISCIPLINE	CIVIL
SHEET NAME	C-01
SHEET	1
OF	5

C:\CADD\DRIVES_ZIPPROJECT FILES\IA-JEFFERSONVILLE\JEFFERSONVILLE - LIFT STATION REPAIR CAD\SHEETS AND PLANS\43089 - LIFT STATION REPAIRS DWG - LSH1 - 3/31/2026 2:02:44 PM - ADAM DAWSON



PLAN VIEW



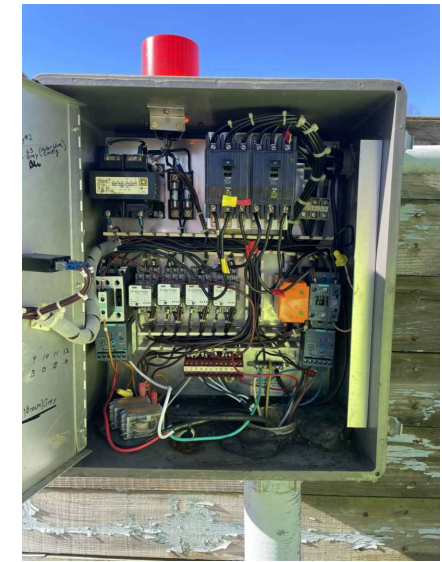
SECTION VIEW

EXISTING MARKET LIFT STATION (#1)

SCALE: 1/4" = 1'-0"



LS SITE PHOTO



EX. LS PANEL TO BE REPLACED IN TOTAL

NOTES:

1. DETAILS SHOWN ARE A GENERAL REPRESENTATION OF EXISTING INSTALLATION.
2. WORK AT THIS LOCATION IS MAINTENANCE IN NATURE. STATION PUMP CAPACITY AND OPERATIONAL PARAMETERS ARE NOT PROPOSED TO CHANGE AS A PART OF THIS WORK.
3. CONTRACTOR SHALL PROVIDE BYPASS PUMPING WHILE PUMP STATION IS OUT OF SERVICE TO FACILITATE WORK.

(X) CODED NOTES:

1. REPLACE PUMPS (2) XYLEM/FLYGT MODEL NP3102.060, 463 IMPELLER, 5HP, 230/3/60 SUBMERSIBLE MOTORS (w/50' POWER/SENSOR CABLES), OR EQUAL.
2. REPLACE PUMP STAINLESS STEEL GUIDE RAILS, UPPER & INTERMEDIATE BRACKETS & LIFTING CHAIN.
3. REPLACE (4) WEIGHTED LEVEL FLOATS & S.S. FLOAT HANGER BRACKET (50' CABLES).
4. REPLACE PUMP CONTROL PANEL ENCLOSURE & ALL COMPONENTS INTERIOR TO PANEL. (REFER TO SPECIFICATIONS FOR REQUIREMENTS)
5. INSTALL NEW SUBMERSIBLE LEVEL TRANSDUCER & INTERFACE TO NEW CONTROL PANEL.
6. ALTERNATE BID ITEMS SHALL INCLUDE REPLACEMENT OF (2) 4" DISCHARGE ELBOWS, (2) 4" PUMP DISCHARGE LINES, AND (2) 4" FLANGED 90° BENDS.
7. PROVIDE NEW NON-METALLIC CONDUIT FROM WET WELL TO NEW CONTROL PANEL. ALL CONDUIT(S) TO INCORPORATE CONDUIT SEALS TO PREVENT TRANSFER OF WET WELL GASES.

BID

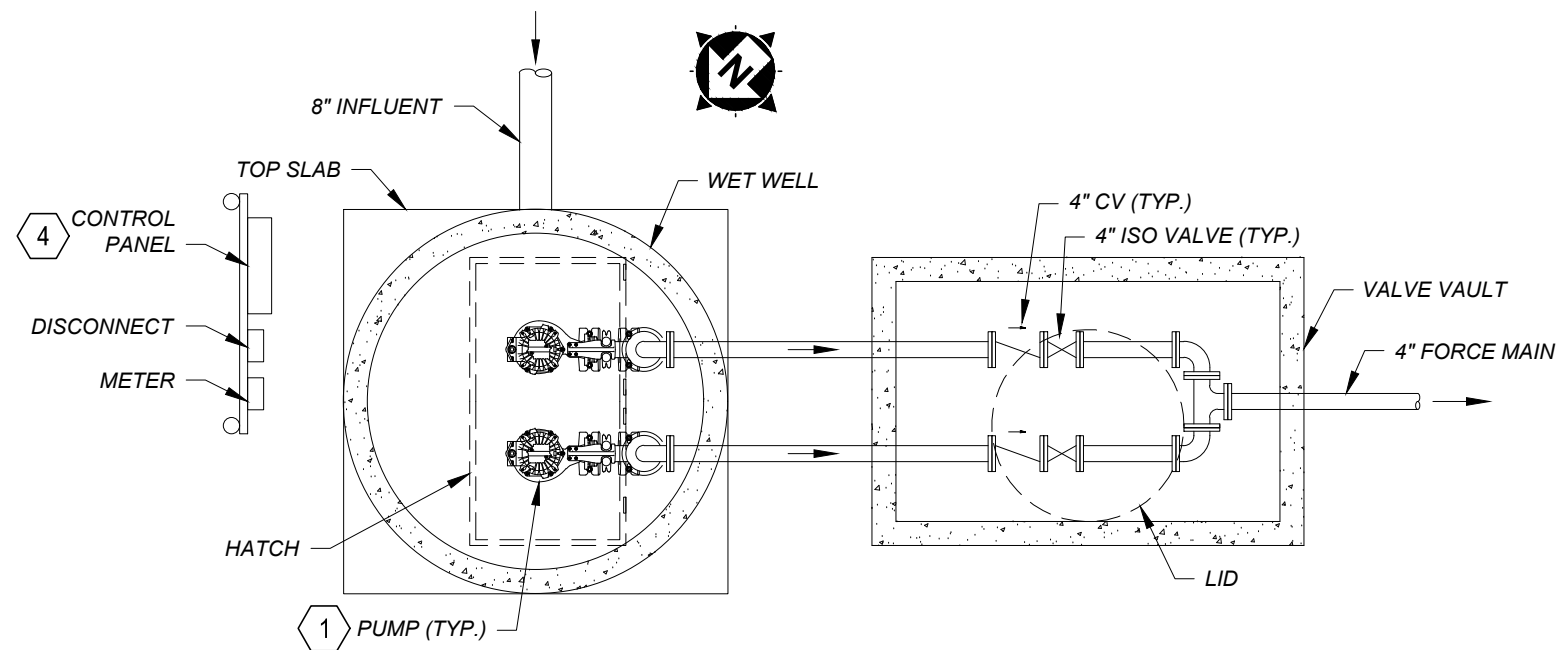
verdantas

ISSUED FOR:	BIDDING
ISSUE DATE:	3/31/2026
SCALE:	AS SHOWN
DESIGNED BY:	BRA
DRAWN BY:	AGD
CHECKED BY:	BRA

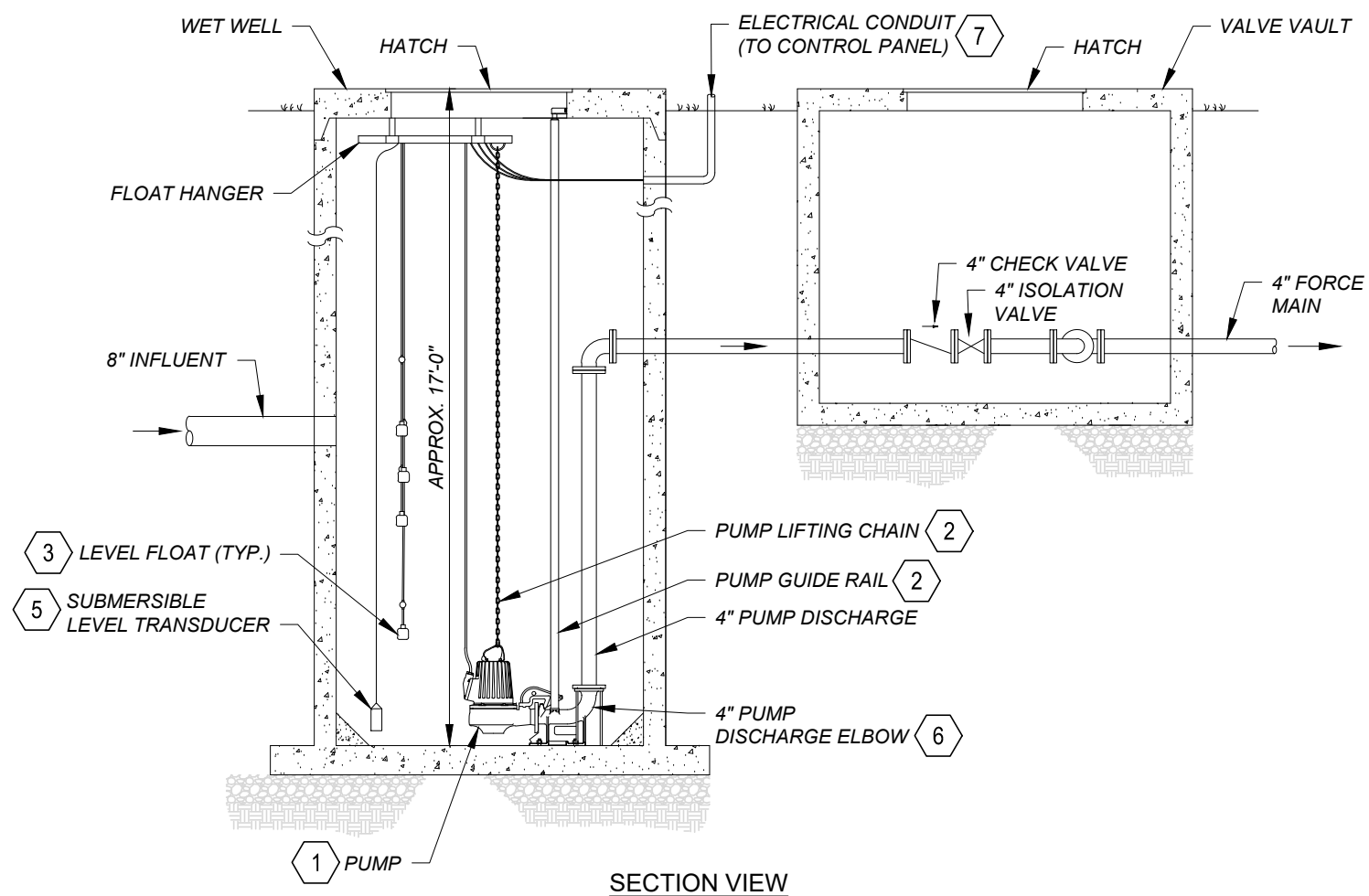
**VILLAGE OF JEFFERSONVILLE
LIFT STATION REPAIR PROJECT
- JEFFERSONVILLE, OHIO -**

MARKET LIFT STATION (#1)

PROJECT NO.	
43089	
DISCIPLINE	
CIVIL	
SHEET NAME	
C-02	
SHEET	OF
2	5



PLAN VIEW



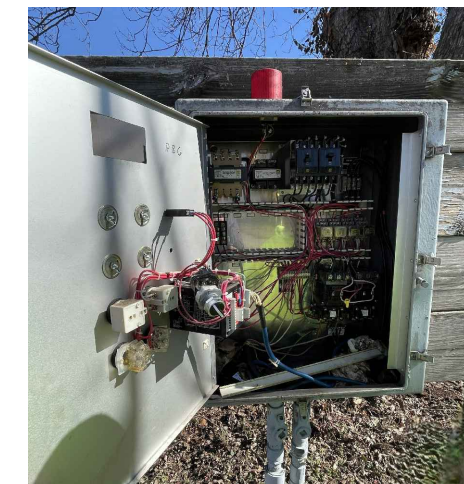
SECTION VIEW

EXISTING FENT LIFT STATION (#2)

SCALE: 1/4" = 1'-0"



LS SITE PHOTO



**EX. LS PANEL
TO BE REPLACED IN TOTAL**

NOTES:

1. DETAILS SHOWN ARE A GENERAL REPRESENTATION OF EXISTING INSTALLATION.
2. WORK AT THIS LOCATION IS MAINTENANCE IN NATURE. STATION PUMP CAPACITY AND OPERATIONAL PARAMETERS ARE NOT PROPOSED TO CHANGE AS A PART OF THIS WORK.
3. CONTRACTOR SHALL PROVIDE BYPASS PUMPING WHILE PUMP STATION IS OUT OF SERVICE TO FACILITATE WORK.

(X) CODED NOTES:

1. REPLACE PUMPS (2) XYLEM/FLYGT MODEL NP3102.060, 463 IMPELLER, 5HP, 230/3/60 SUBMERSIBLE MOTORS (w/50' POWER/SENSOR CABLES), OR EQUAL.
2. REPLACE PUMP STAINLESS STEEL GUIDE RAILS, UPPER & INTERMEDIATE BRACKETS & LIFTING CHAIN.
3. REPLACE (4) WEIGHTED LEVEL FLOATS & S.S. FLOAT HANGER BRACKETS (50' CABLES).
4. REPLACE PUMP CONTROL PANEL ENCLOSURE & ALL COMPONENTS INTERIOR TO PANEL. (REFER TO SPECIFICATIONS FOR REQUIREMENTS)
5. INSTALL NEW SUBMERSIBLE LEVEL TRANSDUCER & INTERFACE TO NEW CONTROL PANEL.
6. ALTERNATE BID ITEMS SHALL INCLUDE REPLACEMENT OF (2) 4" DISCHARGE ELBOWS, (2) 4" PUMP DISCHARGE LINES, AND (2) 4" FLANGED 90° BENDS.
7. PROVIDE NEW NON-METALLIC CONDUIT FROM WET WELL TO NEW CONTROL PANEL. ALL CONDUIT(S) TO INCORPORATE CONDUIT SEALS TO PREVENT TRANSFER OF WET WELL GASES.

C:\CADD\DRIVES\PROJECT FILES\14-JEFFERSONVILLE - LIFT STATION REPAIR CADD SHEETS AND PLANS\43089 - LIFT STATION REPAIRS.DWG - LS#2 - 3/31/2026 2:02:44 PM - ADAM DAWSON

BID

verdantas

ISSUED FOR:	BIDDING
ISSUE DATE:	3/31/2026
SCALE:	AS SHOWN
DESIGNED BY:	BRA
DRAWN BY:	AGD
CHECKED BY:	BRA

**VILLAGE OF JEFFERSONVILLE
LIFT STATION REPAIR PROJECT
- JEFFERSONVILLE, OHIO -**

FENT LIFT STATION (#2)

PROJECT NO.	43089
DISCIPLINE	CIVIL
SHEET NAME	C-03
SHEET	3
OF	5

ISSUED FOR:	BIDDING
ISSUE DATE:	3/31/2026
SCALE:	AS SHOWN
DESIGNED BY:	BRA
DRAWN BY:	AGD
CHECKED BY:	BRA

VILLAGE OF JEFFERSONVILLE
LIFT STATION REPAIR PROJECT
- JEFFERSONVILLE, OHIO -

WENDY'S LIFT STATION (#4)

PROJECT NO.	
43089	
DISCIPLINE	
CIVIL	
SHEET NAME	
C-04	
SHEET	OF
4	5



LS SITE PHOTO



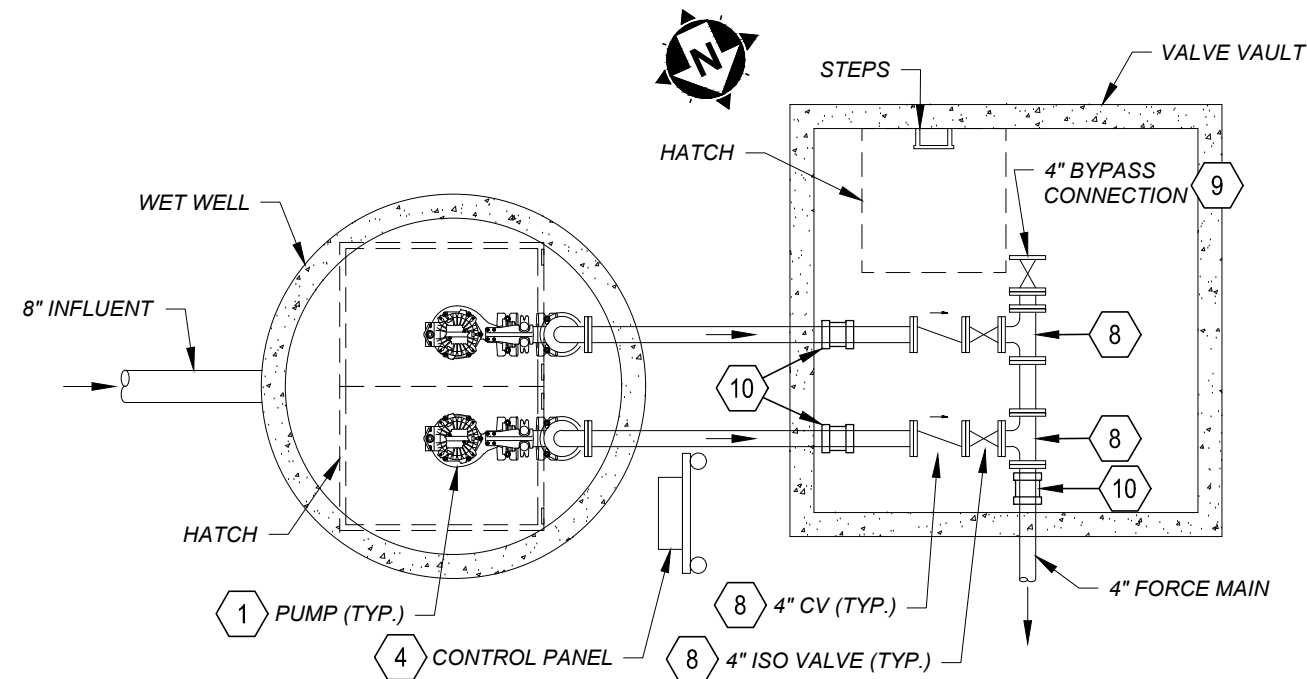
EX. LS PANEL
TO BE REPLACED IN TOTAL

NOTES:

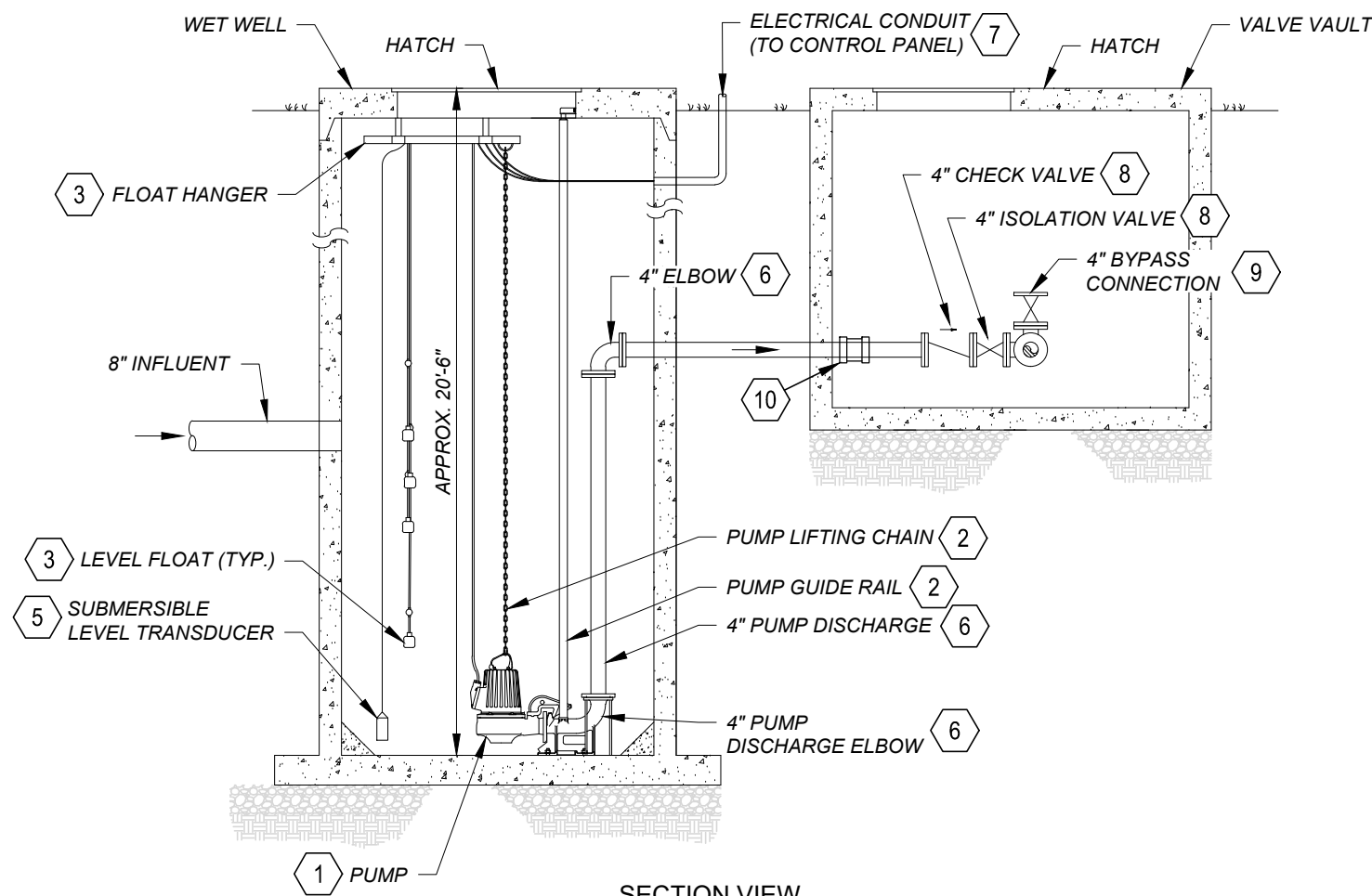
1. DETAILS SHOWN ARE A GENERAL REPRESENTATION OF EXISTING INSTALLATION.
2. WORK AT THIS LOCATION IS MAINTENANCE IN NATURE. STATION PUMP CAPACITY AND OPERATIONAL PARAMETERS ARE NOT PROPOSED TO CHANGE AS A PART OF THIS WORK.
3. CONTRACTOR SHALL PROVIDE BYPASS PUMPING WHILE PUMP STATION IS OUT OF SERVICE TO FACILITATE WORK.

X CODED NOTES:

1. REPLACE PUMPS (2) XYLEM/FLYGT MODEL NP3102.060, 463 IMPELLER, 5HP, 230/3/60 SUBMERSIBLE MOTORS (w/50' POWER/SENSOR CABLES), OR EQUAL.
2. REPLACE PUMP STAINLESS STEEL GUIDE RAILS, UPPER & INTERMEDIATE BRACKETS & LIFTING CHAIN.
3. REPLACE (4) WEIGHTED LEVEL FLOATS & S.S. FLOAT HANGER BRACKETS (50' CABLES).
4. REPLACE PUMP CONTROL PANEL ENCLOSURE & ALL COMPONENTS INTERIOR TO PANEL. (REFER TO SPECIFICATIONS FOR REQUIREMENTS)
5. INSTALL NEW SUBMERSIBLE LEVEL TRANSDUCER & INTERFACE TO NEW CONTROL PANEL.
6. ALTERNATE BID ITEMS SHALL INCLUDE REPLACEMENT OF (2) 4" DISCHARGE ELBOWS, (2) 4" PUMP DISCHARGE LINES, AND (2) 4" FLANGED 90° BENDS.
7. PROVIDE NEW NON-METALLIC CONDUIT FROM WET WELL TO NEW CONTROL PANEL. ALL CONDUIT(S) TO INCORPORATE CONDUIT SEALS TO PREVENT TRANSFER OF WET WELL GASES.
8. EXISTING (2) 4" D.I. CHECK VALVES, (2) 4" D.I. PLUG VALVES & (2) 4" D.I. TEES. (BY OWNER)
9. EXISTING E 4"~45° BEND, 4" PLUG VALVE & 4" CAM LOC (FEMALE) CONNECTOR TO SUPPORT BYPASS. (BY OWNER)
10. CUT EXISTING 4" D.I. DISCHARGE PIPE & INSTALL 4" HYMAX COUPLING(S) TO INTERFACE w/ NEW VALVE PIT PIPING. ALL PIPING INTERIOR TO VALVE VAULT TO BE REPLACED. (BY OWNER)



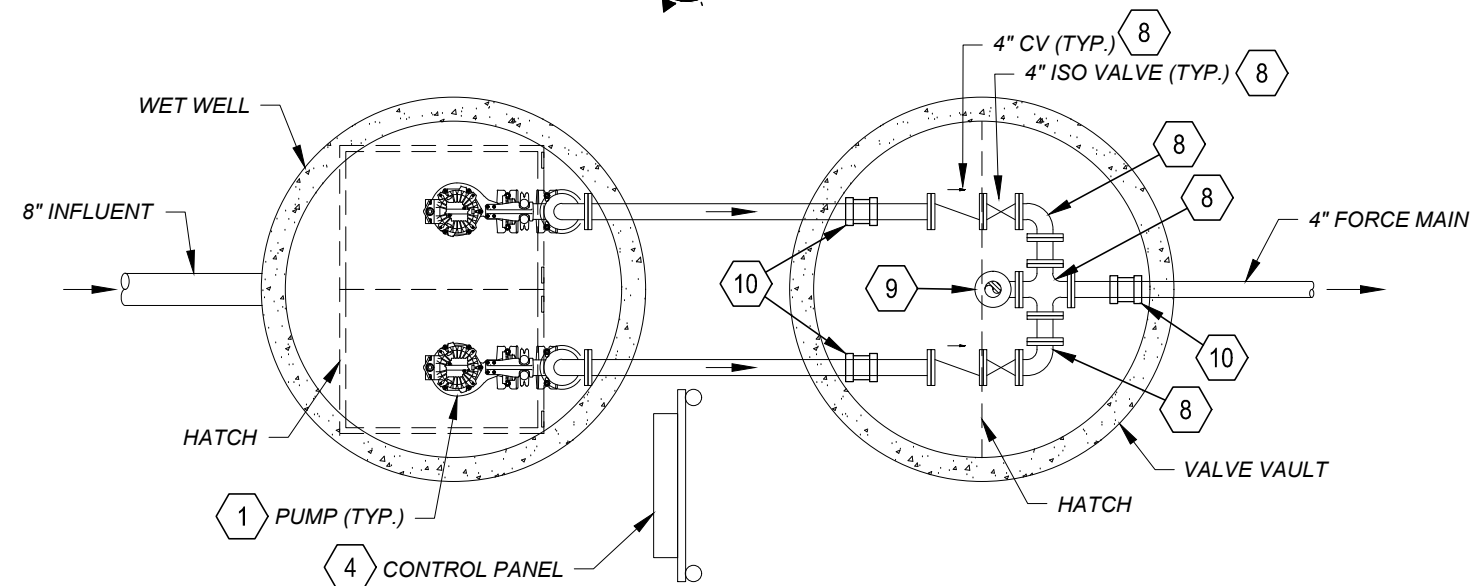
PLAN VIEW



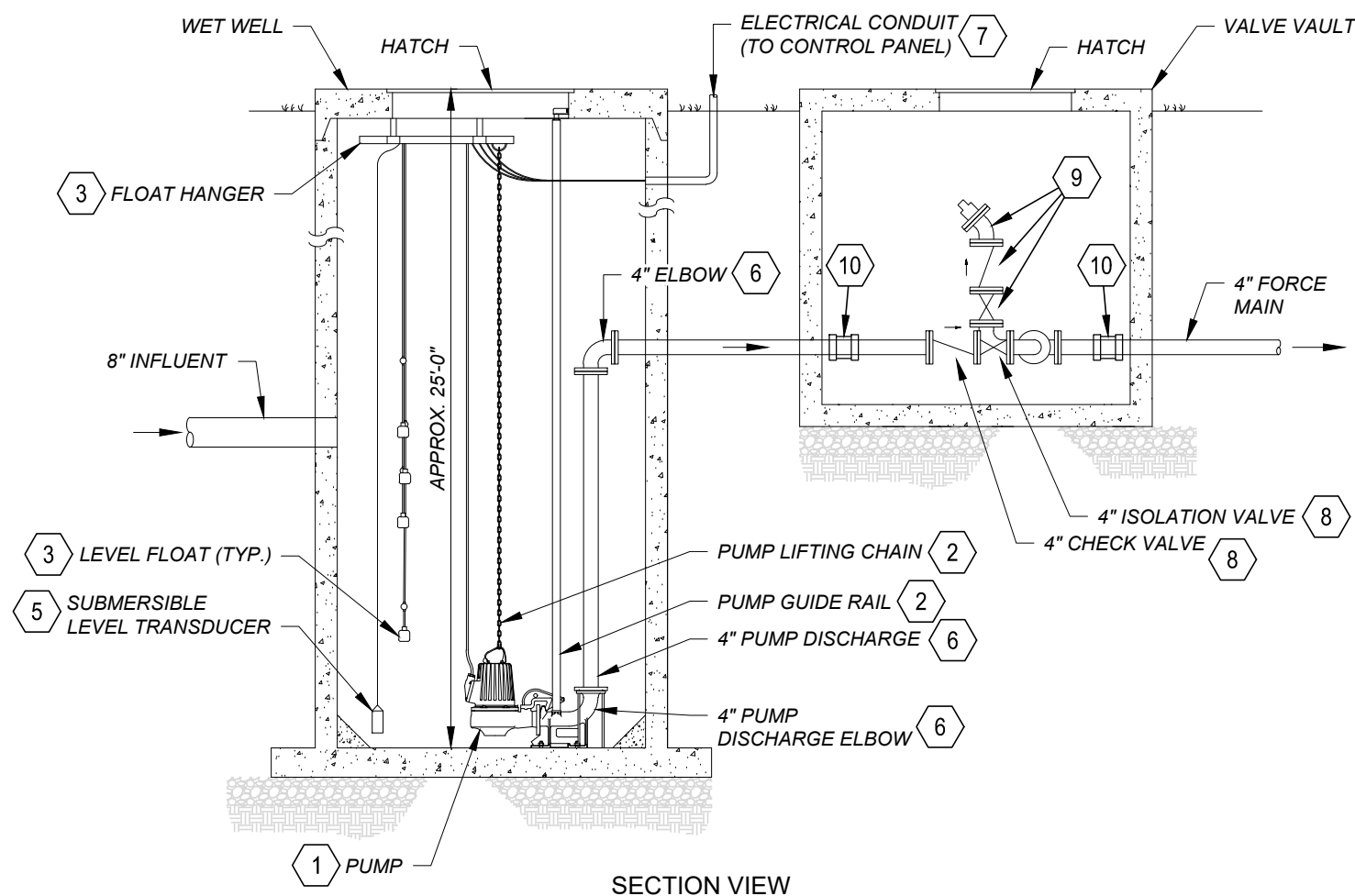
SECTION VIEW

EXISTING WENDY'S LIFT STATION (#4)

SCALE: 1/4" = 1'-0"



PLAN VIEW



SECTION VIEW

EXISTING FLYING J LIFT STATION (#5)

SCALE: 1/4" = 1'-0"



LS SITE PHOTO



EX. LS PANEL TO BE REPLACED IN TOTAL

NOTES:

1. DETAILS SHOWN ARE A GENERAL REPRESENTATION OF EXISTING INSTALLATION.
2. WORK AT THIS LOCATION IS MAINTENANCE IN NATURE. STATION PUMP CAPACITY AND OPERATIONAL PARAMETERS ARE NOT PROPOSED TO CHANGE AS A PART OF THIS WORK.
3. CONTRACTOR SHALL PROVIDE BYPASS PUMPING WHILE PUMP STATION IS OUT OF SERVICE TO FACILITATE WORK.

X CODED NOTES:

1. REPLACE PUMPS (2) XYLEM/FLYGT MODEL NP6020 NX3, 10HP, 460/3/60 SUBMERSIBLE MOTORS (w/50' POWER/SENSOR CABLES), OR EQUAL.
2. REPLACE PUMP STAINLESS STEEL GUIDE RAILS, UPPER & INTERMEDIATE BRACKETS & LIFTING CHAIN.
3. REPLACE (4) WEIGHTED LEVEL FLOATS & S.S. FLOAT HANGER BRACKETS (50' CABLES).
4. REPLACE PUMP CONTROL PANEL ENCLOSURE & ALL COMPONENTS INTERIOR TO PANEL. (REFER TO SPECIFICATIONS FOR REQUIREMENTS)
5. INSTALL NEW SUBMERSIBLE LEVEL TRANSDUCER & INTERFACE TO NEW CONTROL PANEL.
6. ALTERNATE BID ITEMS SHALL INCLUDE REPLACEMENT OF (2) 4" DISCHARGE ELBOWS, (2) 4" PUMP DISCHARGE LINES, AND (2) 4" FLANGED 90° BENDS.
7. PROVIDE NEW NON-METALLIC CONDUIT FROM WET WELL TO NEW CONTROL PANEL. ALL CONDUIT(S) TO INCORPORATE CONDUIT SEALS TO PREVENT TRANSFER OF WET WELL GASES.
8. REPLACE (2) 4" D.I. CHECK VALVES, (2) 4" D.I. PLUG VALVES, (2) 4" D.I. ELBOWS & (1) 4" D.I. CROSS.
9. PROVIDE 4"~45° BEND, 4" CHECK VALVE, 4" PLUG VALVE, 4"~90° BEND & 4" CAM LOC (FEMALE) CONNECTOR TO SUPPORT BYPASS.
10. CUT EXISTING 4" D.I. DISCHARGE PIPE & INSTALL 4" HYMAX COUPLING(S) TO INTERFACE w/ NEW VALVE PIT PIPING. ALL PIPING INTERIOR TO VALVE VAULT TO BE REPLACED.

BID

verdantas

ISSUED FOR:	BIDDING
ISSUE DATE:	3/31/2026
SCALE:	AS SHOWN
DESIGNED BY:	BRA
DRAWN BY:	AGD
CHECKED BY:	BRA

**VILLAGE OF JEFFERSONVILLE
LIFT STATION REPAIR PROJECT
- JEFFERSONVILLE, OHIO -**

FLYING J LIFT STATION (#5)

PROJECT NO.	43089
DISCIPLINE	CIVIL
SHEET NAME	C-05
SHEET	5
OF	5

C:\CADD\DRIVES\PROJECT FILES\14-JEFFERSONVILLE - JEFFERSONVILLE - LIFT STATION REPAIR CAD\SHEETS AND PLANS\43089 - LIFT STATION REPAIRS.DWG - LS#5 - 3/31/2026 2:02:44 PM - ADAM DAWSON

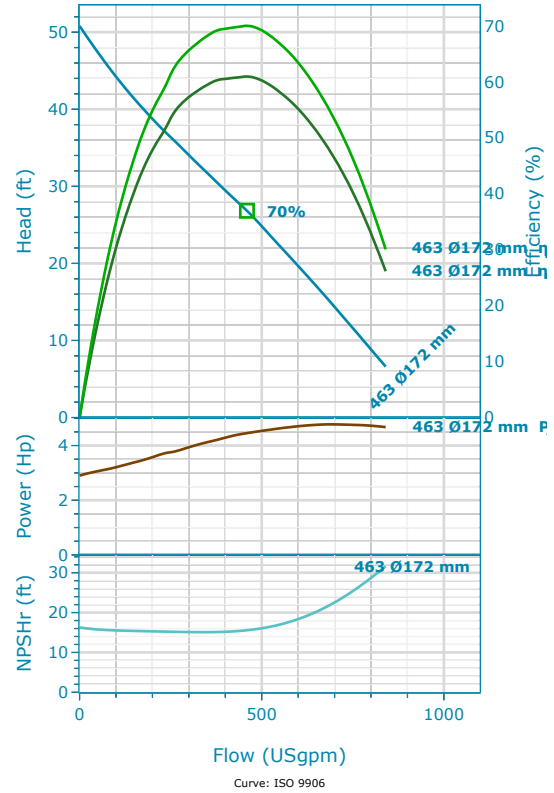
Pump Curve

NP 3102 MT 3~ Adaptive 463 (Fent-Market-Wendy's)

NP 3102 MT 3~ Adaptive 463 | Configuration Summary



Flygt's self-cleaning non-clog N-pumps feature innovative designs and functions that deliver high sustained efficiency and the most reliable operation. This makes them the most reliable choice available for a broad range of wastewater applications for tough applications such as unscreened sewage, wastewater and sludge up to an 8 percent solids concentration. Impeller material available in Hardened cast Iron, Hard Iron and Stainless Steel to fit any wastewater application.



Nominal (mean) data shown. Under- and over-performance from this data should be expected due to standard manufacturing tolerances. Please consult your local Flygt representative for additional performance guarantees.

GENERAL

Explosion Proof	Impeller Diameter
No	172 mm
Max. Pumped Media Temp.	
104 °F	

MATERIAL AND COATING

Impeller Material	Stator Cover Material
Hard-Iron	Grey Cast Iron
Volute Material	
Grey Cast Iron	

MOTOR

Rated Voltage	Motor Efficiency Class
460 V	Standard
Coupling	Rated Power
Y	5 Hp

INSTALLATION

Installation Type
P - Semi-Permanent, Wet

NP 3102 MT 3~ Adaptive 463 | Product Details

Description

N 3102

Wastewater N-Technology Pump With Adaptive N® Impeller

Flygt N-pumps take on the toughest applications and get the job done. Every component is designed and manufactured to deliver sustained high efficiency. Thanks to patented N-technology with its innovative self-cleaning impeller, Flygt N-pumps deliver the highest total efficiency. They lower your energy bill and reduce unplanned maintenance costs. That adds up to total peace of mind – and big savings over the long term. Most solid objects entering the pump will pass through the impeller between the impeller vanes. If an object gets caught on the leading edge of one of the vanes, it will slide along the backswept shape towards the perimeter of the inlet. Due to the mechanical self-cleaning design, a sludge concentration up to 8% can easily be pumped.

Flexible and Modular Design

- This self-cleaning pump features innovative functions that make it the best choice for a broad range of applications. The modular hydraulic design enables you to tailor the hydraulics to meet the requirements of virtually any application.
- Replaceable wear ring in two materials, gray iron or Hard-Iron, for different operation conditions
- Hardened gray iron impeller for typical wastewater applications
- Hard-Iron impeller for abrasive and corrosive applications
- Stainless steel impeller for special applications that require duplex stainless steel
- Short shaft overhang reduces shaft deflection and increases seal and bearing life
- Motor designed for submersible use. Heat is concentrated to the stator core for improved cooling properties
- The double mechanical seal system consists of two sets of mechanical shaft seals that work independently to provide double security. Available in Tungsten carbide (WCCR) or Silicone carbide (SiC) depending on pumped media.
- Griploc mechanical face seal system secures locking to the shaft, no rubber friction, no grub screws and no shaft damage
- Motor cable SUBCAB ® specially developed for submersible use.

Product Features

- Sustained high efficiency
- Hardened cast iron, optional Duplex stainless steel and Hard-Iron impellers
- State-of-the-art wastewater pump with enhanced Adaptive N® hydraulic
- Sustained high efficiency with energy savings up to 25%
- Flexible and modular design
- Robust and reliable

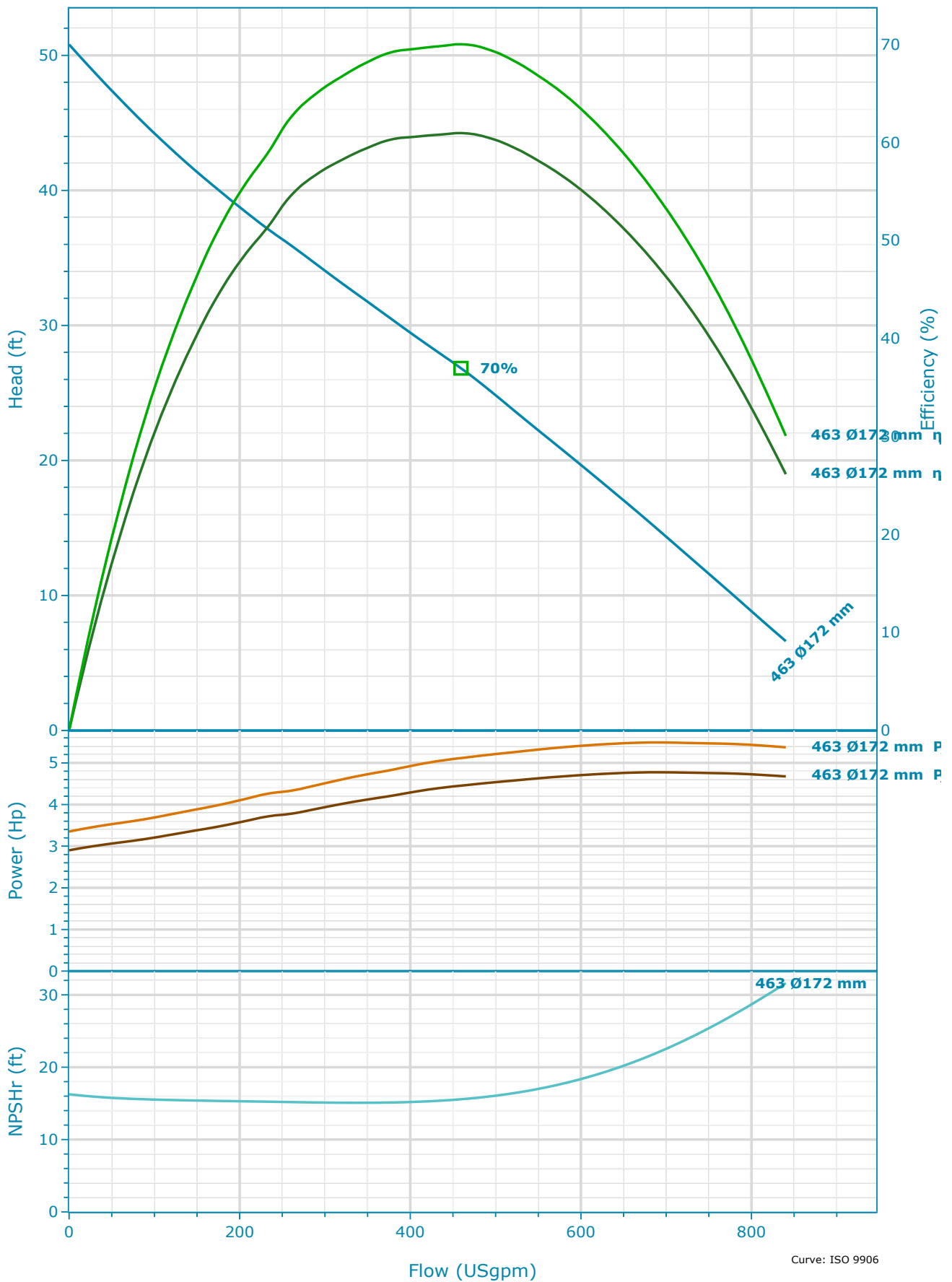
Construction Materials

Impeller Material	Volute Material	Stator Cover Material
Hard-Iron	Grey Cast Iron	Grey Cast Iron

Motor

Rated Power	Number Of Phases	Start Current Ratio	Motor Issue
5 Hp	3	6.09	12
Motor Denomination	Rated Motor Speed	Insulation Class	Locked Rotor Code
18-11-4AL	1,750 RPM	H	H
Motor Efficiency Class	Rated Voltage	Approval	Max starts per hour
Standard	460 V	STD	30
Version Code	Rated Current	Total moment of inertia	Power Factor 100%
060	6.6 A	0.64 ft ² lbf	0.82
Frequency	Start Current	Type of duty	Power Factor 75%
60 Hz	40 A	S1	0.77
Max P2 (1x)	Starting Current, Direct Starting	Stator Variant	Power Factor 50%
4.77 Hp	40 A	62	0.65
Number Of Poles	Starting Current, Star Delta	Motor Module	Efficiency 100%
4	13.33 A	135	86.8 %
			Efficiency 75%
			87.5 %
			Efficiency 50%
			86.6 %

NP 3102 MT 3~ Adaptive 463 | Hydraulic Data & Performance Curve



Nominal (mean) data shown. Under- and over-performance from this data should be expected due to standard manufacturing tolerances. Please consult your local Flygt representative for additional performance guarantees.

Selection

Series	Number Of Vanes
N 3000	2
Name	
NP 3102 MT 3~ Adaptive 463	
Frequency	
60 Hz	
System Type	
Single Pump	
Operating Pumps	
1	
Standby Pumps	
No Standby Pump	
Curve Code	
463	
Impeller Diameter	
172 mm	
Inlet Diameter	
100 mm	
Outlet Diameter	
4 in	

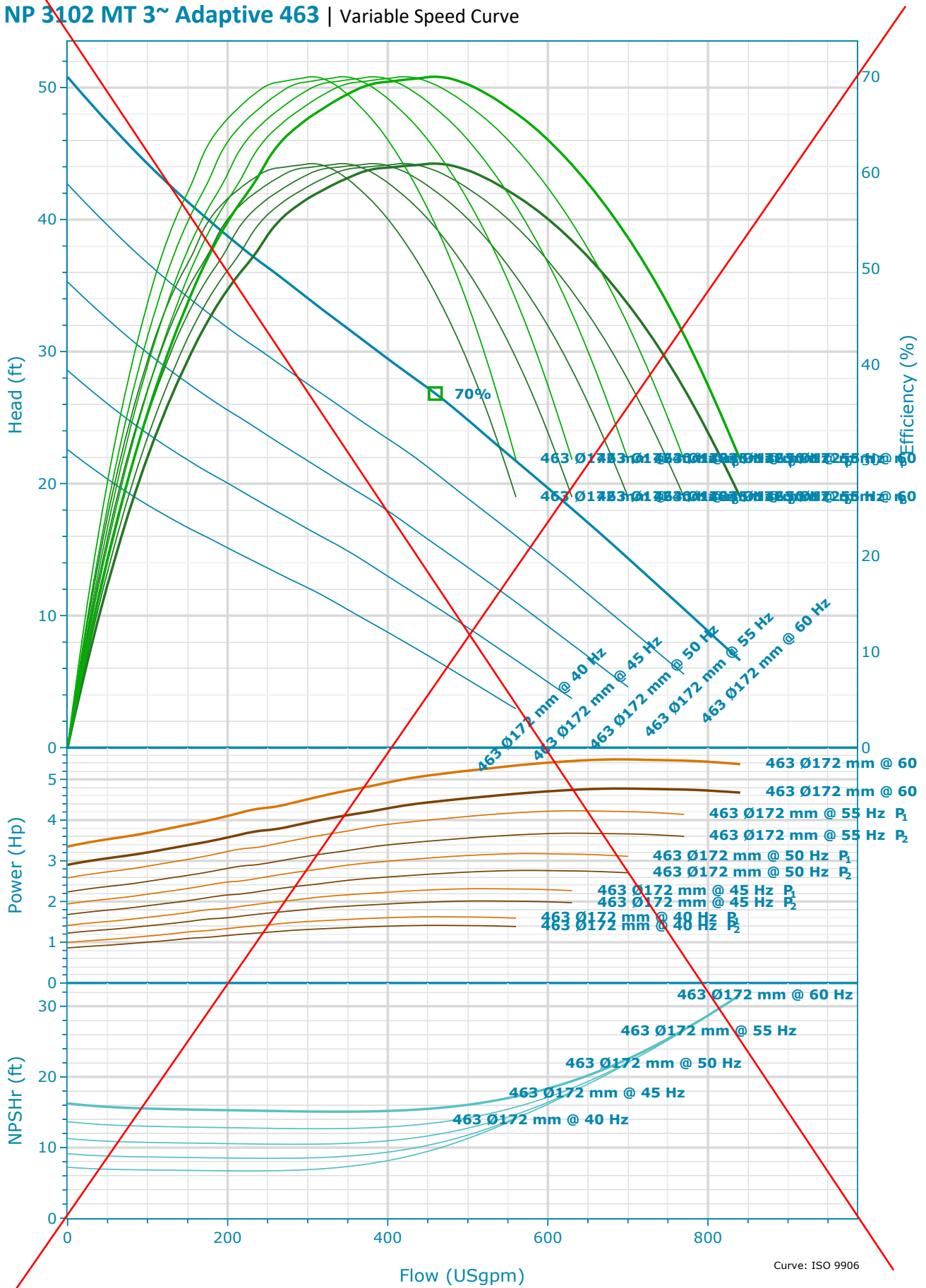
Fluid and Operating Conditions

Fluid Type	Density
Water	62.43 lb/ft ³
Fluid Temperature	Dynamic Viscosity
39.2 °F	1.57 cP
Specific Gravity	Fluid Vapor Pressure
1	0.12 psi
	Atmospheric Pressure
	14.7 psi
	Elevation
	0 ft
	Ambient Temperature
	68 °F
	NPSH Available
	33.68 ft
	Submergence
	0 ft

Design Curve

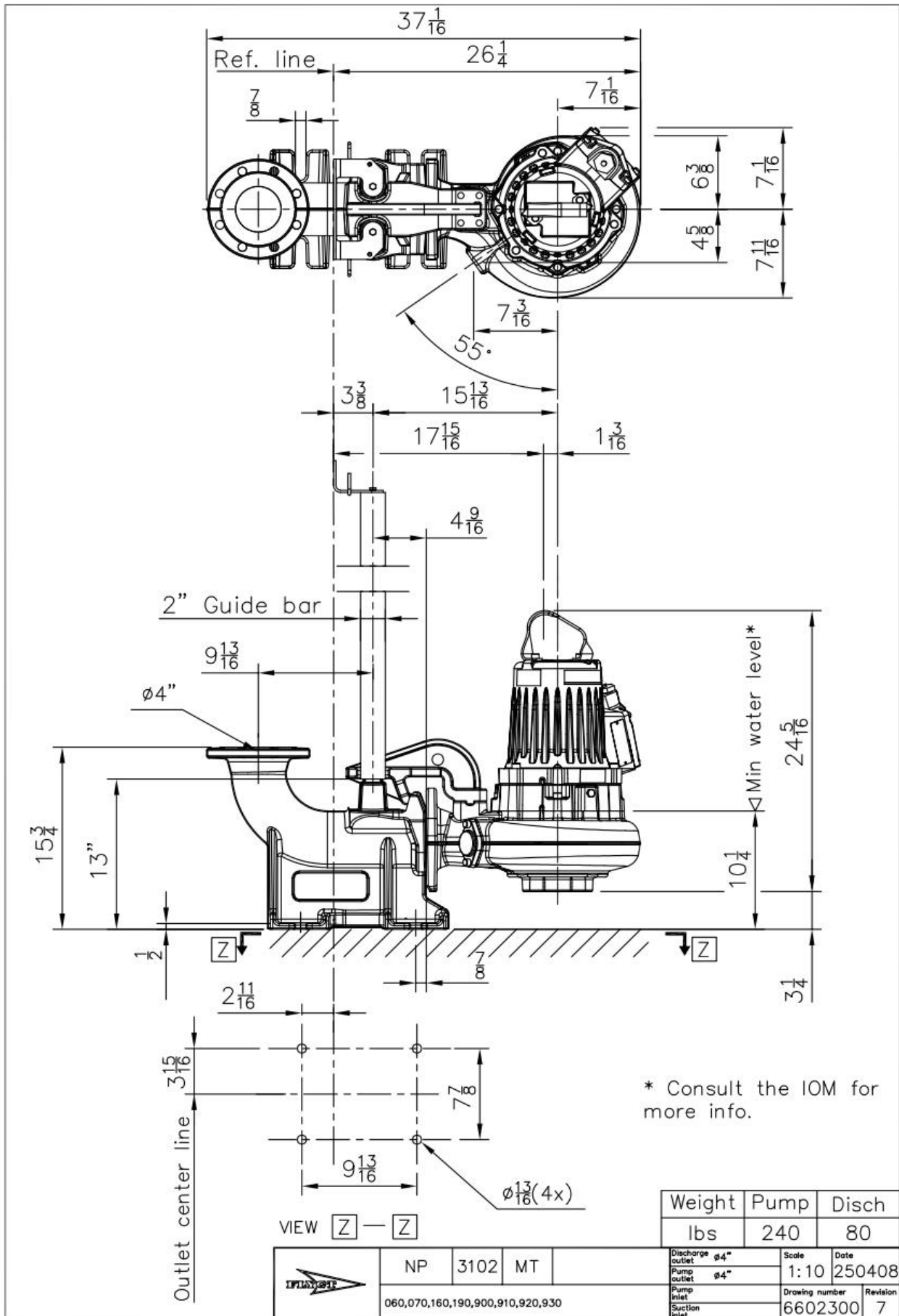
Rated Speed	BEP Flow
60 Hz	459.45 USgpm
Max Flow	BEP Head
840.23 USgpm	26.83 ft
H@QMin	Max P2
50.81 ft	4.77 Hp
H@QMax	
6.61 ft	
BEP	
70.02 %	

NP 3102 MT 3~ Adaptive 463 | Variable Speed Curve



Nominal (mean) data shown. Under- and over-performance from this data should be expected due to standard manufacturing tolerances. Please consult your local Flygt representative for additional performance guarantees.

NP 3102 MT 3~ Adaptive 463 | Dimensional Data & Drawing

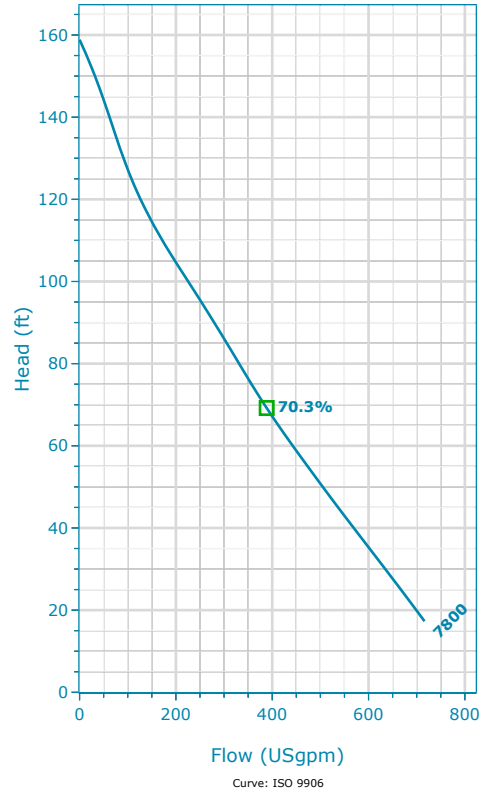


Pump Curve
Concertor 6020 N80 (Flying J)

Concertor 6020 N80 | Configuration Summary



Concertor® is an intelligent wastewater pumping system that is designed to automatically deliver optimal pumping performance while at the same time significantly reducing the total cost of ownership.



Nominal (mean) data shown. Under- and over-performance from this data should be expected due to standard manufacturing tolerances. Please consult your local Flygt representative for additional performance guarantees.

GENERAL

Explosion Proof

No

Max. Pumped Media Temp.

104 °F

MATERIAL AND COATING

Impeller Material

Hard-Iron

Stator Cover Material

Grey Cast Iron

Volute Material

Grey Cast Iron

MOTOR

Rated Voltage

460 V

Rated Power

10 Hp

INSTALLATION

Installation Type

P - Semi-Permanent, Wet

Concertor 6020 N80 | Product Details

Description

Flygt Concertor®

Achieve clog-free, energy-efficient wastewater pumping with Flygt Concertor®

Using advanced software functionality and state-of-the-art hardware, Concertor® protects against unscheduled downtime and creates significant energy savings for your pump station. Adaptive pump performance optimizes the operating point for each duty cycle, while self-cleaning functionalities clear potential blockages. Integrated intelligence also makes setup and operation quick and easy.

A scalable system

Start with Concertor®

Concertor N is a trouble-free, energy-efficient pump for on/off operation. Clog detection, pump cleaning, and soft start increase pump system reliability and lower operating costs.

Product Features

- IE4 equivalent permanent magnet motor
- Adaptive N® hydraulic system
- Always correct impeller rotation
- Advanced cooling system
- Flygt Plug-in seal with Active Seal system
- Long-life bearings
- Thermal sensors
- Leakage sensors
- Cable cut protection

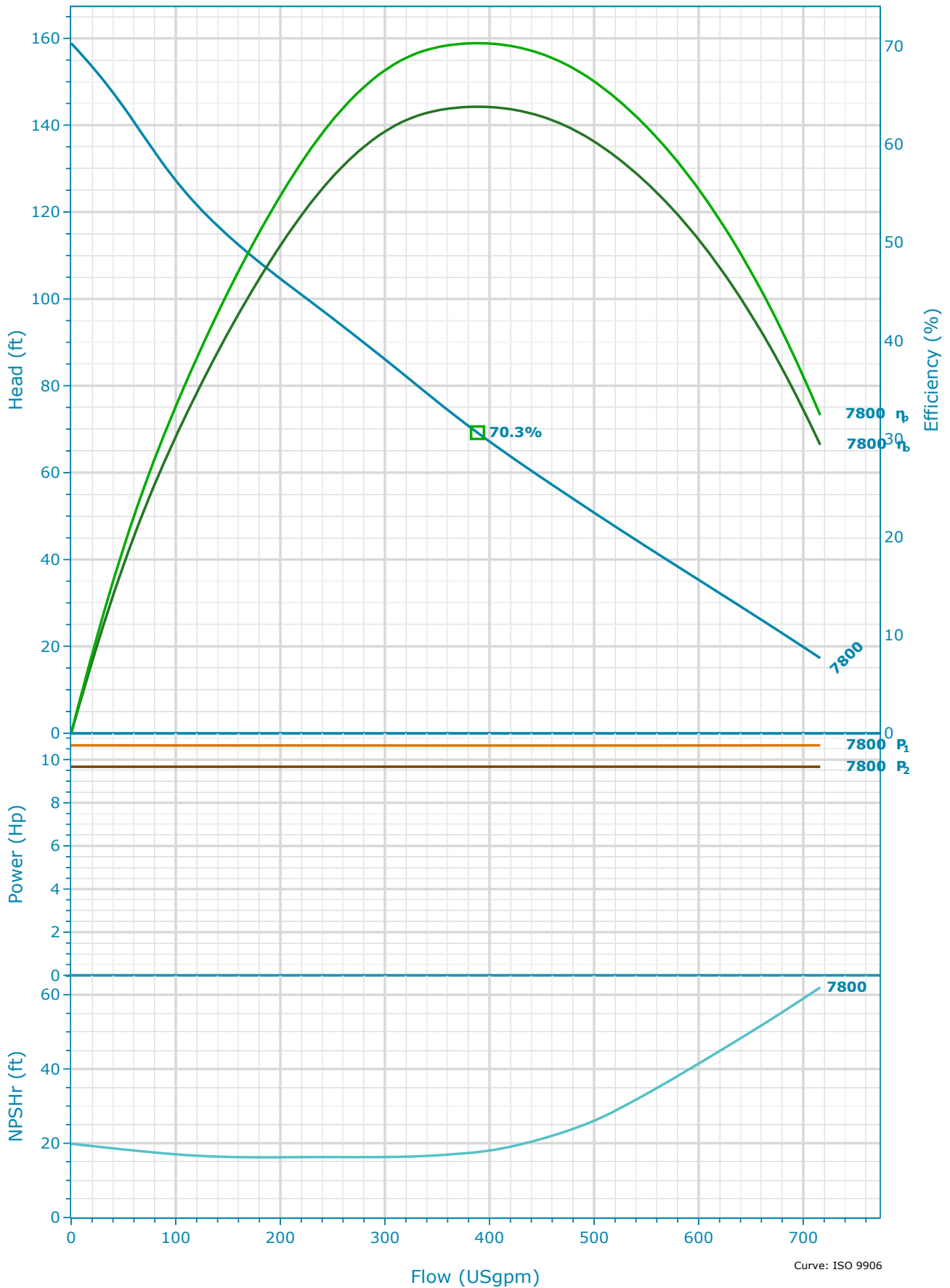
Construction Materials

Impeller Material	Volute Material	Stator Cover Material
Hard-Iron	Grey Cast Iron	Grey Cast Iron

Motor

Rated Power	Motor Max Speed	Motor Module	Efficiency 50%
10 Hp	3,213 RPM	108	90.81 %
Motor Denomination	Rated Voltage	Locked Rotor Code	
18-08-1AZ	460 V	A	
Version Code	Rated Current	Power Factor 100%	
182	10.57 A	0.95	
Max P2 (1x)	Insulation Class	Power Factor 75%	
9.67 Hp	H	0.95	
Number Of Poles	Approval	Power Factor 50%	
10	STD	0.95	
Number Of Phases	Type of duty	Efficiency 100%	
3	S1	90.47 %	
Motor Min Speed	Stator Variant	Efficiency 75%	
800 RPM	1	90.67 %	

Concertor 6020 N80 | Hydraulic Data & Performance Curve



Nominal (mean) data shown. Under- and over-performance from this data should be expected due to standard manufacturing tolerances. Please consult your local Flygt representative for additional performance guarantees.

Selection

Series
Concertor

Name
Concertor 6020 N80

Frequency
60 Hz

System Type
Single Pump

Operating Pumps
1

Standby Pumps
No Standby Pump

Inlet Diameter
110 mm

Outlet Diameter
3 in

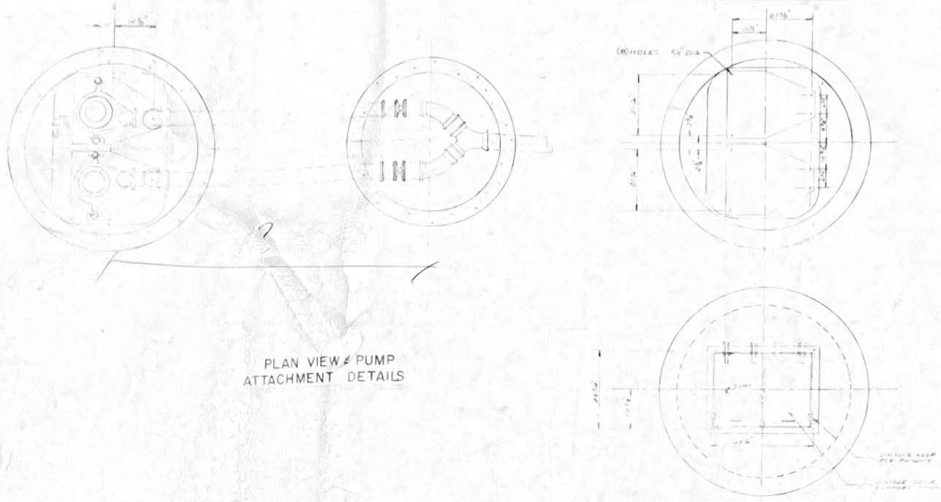
Number Of Vanes
2

Fluid and Operating Conditions

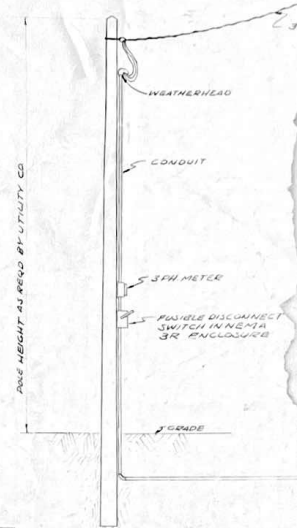
Fluid Type	Density
Water	62.43 lb/ft ³
Fluid Temperature	Dynamic Viscosity
39.2 °F	1.57 cP
Specific Gravity	Fluid Vapor Pressure
1	0.12 psi
	Atmospheric Pressure
	14.7 psi
	Elevation
	0 ft
	Ambient Temperature
	68 °F
	NPSH Available
	33.68 ft
	Submergence
	0 ft

Design Curve

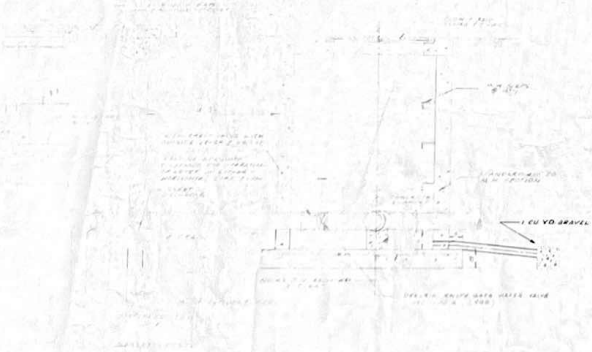
Max Flow	BEP Head
716.24 USgpm	69.2 ft
H@QMin	Max P2
158.86 ft	9.67 Hp
H@QMax	
17.3 ft	
BEP	
70.32 %	
BEP Flow	
388.54 USgpm	



PLAN VIEW & PUMP ATTACHMENT DETAILS



TYPICAL SERVICE CONNECTION (MODIFY PER UTILITY CO REQUIREMENTS)



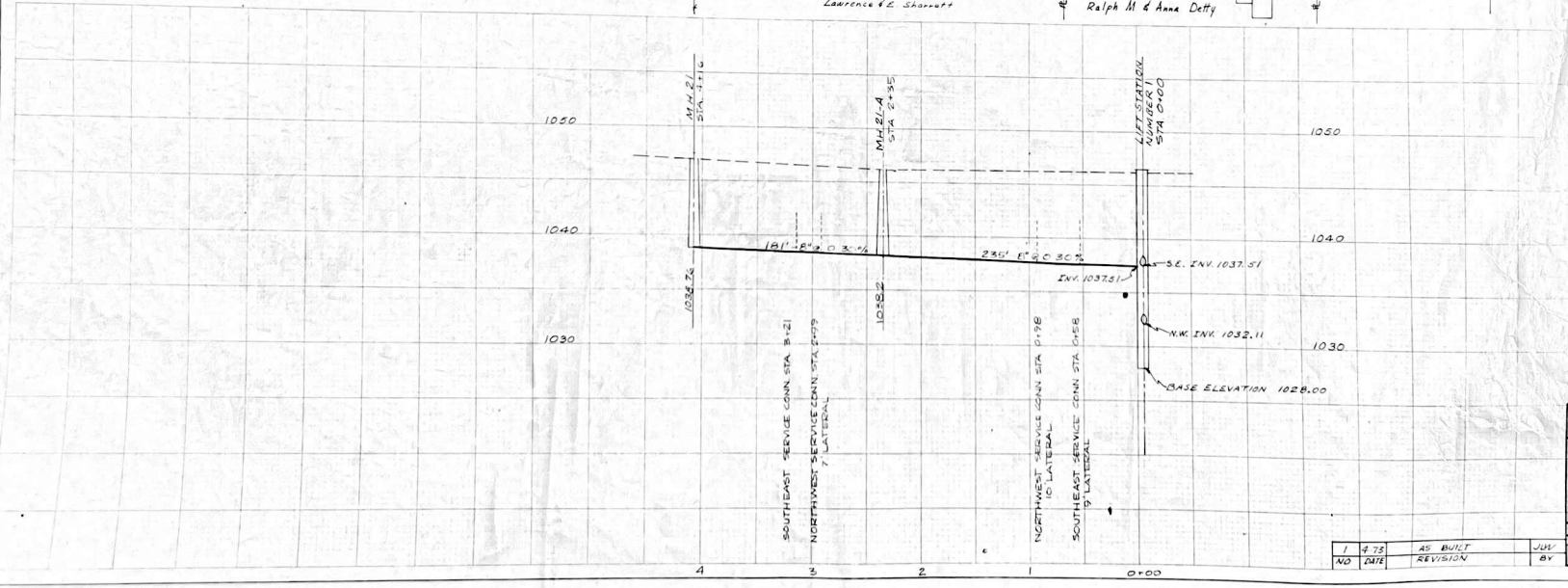
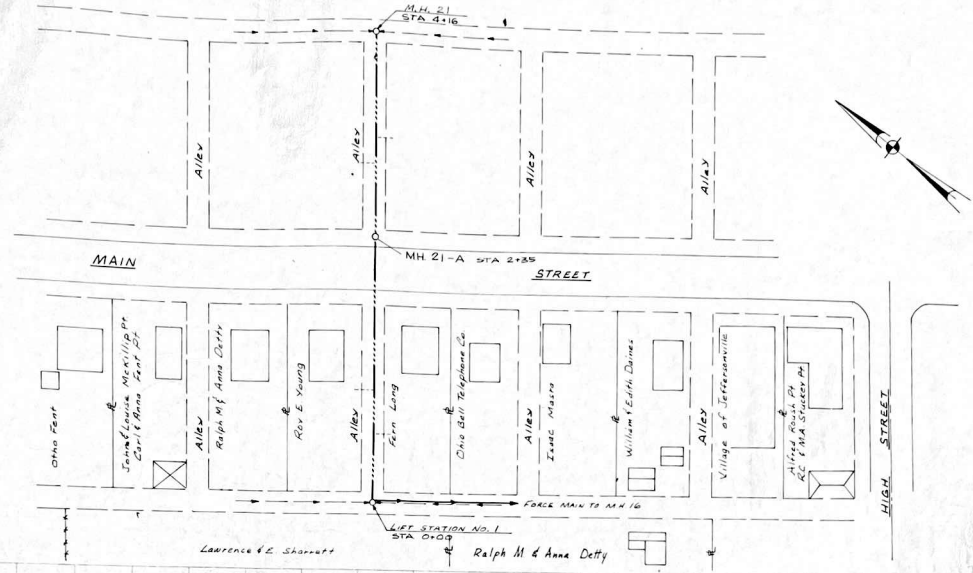
ELEVATION

Market Fent

LIFT STATION	#1	#2	#3
GRADE ELEV	1046.5	1047.0	1043.5
BASE ELEV	1028.0	1030.0	1022.5
INSIDE DIAMETER	5'-0"	5'-0"	5'-0"
INV. OVERFLOW	NONE	NONE	NONE
INV. ELEV. INFLUENT	1032.00 1037.63	1034.11 1035.0	1026.5
DIA./INV. DISCH. PIPE	4\"/>		

M. M. HENDERSON & SONS
 CIVIL ENGINEERS
 100 S. 10th St.
 FAYETTE, MISSOURI 64401
 VILLAGE OF JEFFERSON
 FAYETTE CO. MO.
LIFT STATION DET.
 SCALE: NONE
 COUNTY: JEFFERSON

DATE	NO.	BY	REVISION
2	OHIO		



M. M. SCHIRTZINGER & ASSOCIATES
 CIVIL AND SANITARY CONSULTING ENGINEERS
 12000 W. 12th St., Jeffersonville, Ohio 45013

VILLAGE OF JEFFERSONVILLE
FAYETTE COUNTY, OHIO
MAIN ST. ALLEY

SCALE: VERT. 1" = 5' DATE: NOV. 1972
 CONTRACT NO. H-4111 JOB NO. S-151
 SHEET NO. 6-A OF 35

NO.	DATE	REVISION	BY
1	4-78	AS BUILT	JUV
NO	12/12		BY

CORPORATION LINE

Proposed Right of Way 100' x 5'

No sewers or water - Septic tanks used

W.S.S. Man

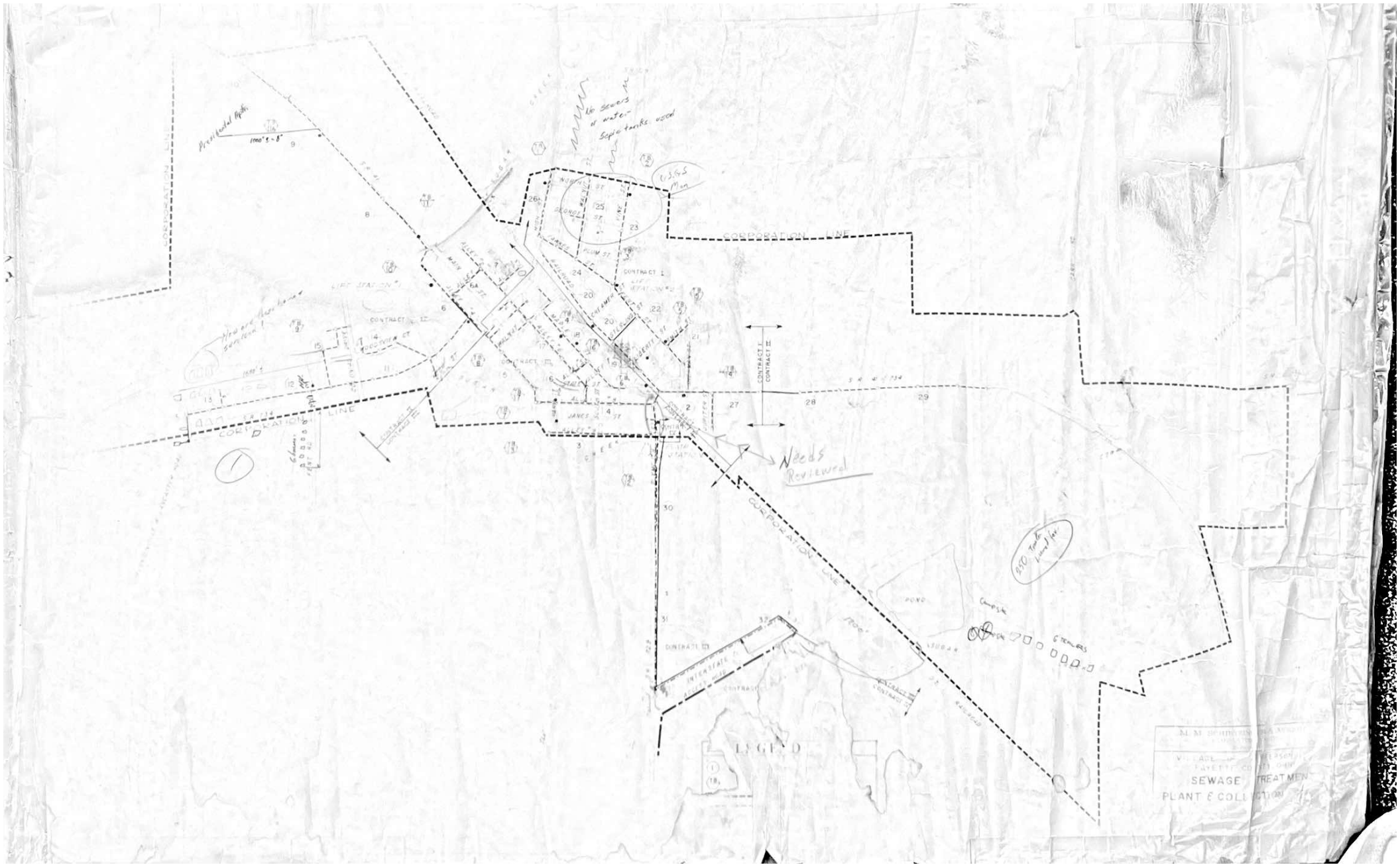
Needs Reviewed

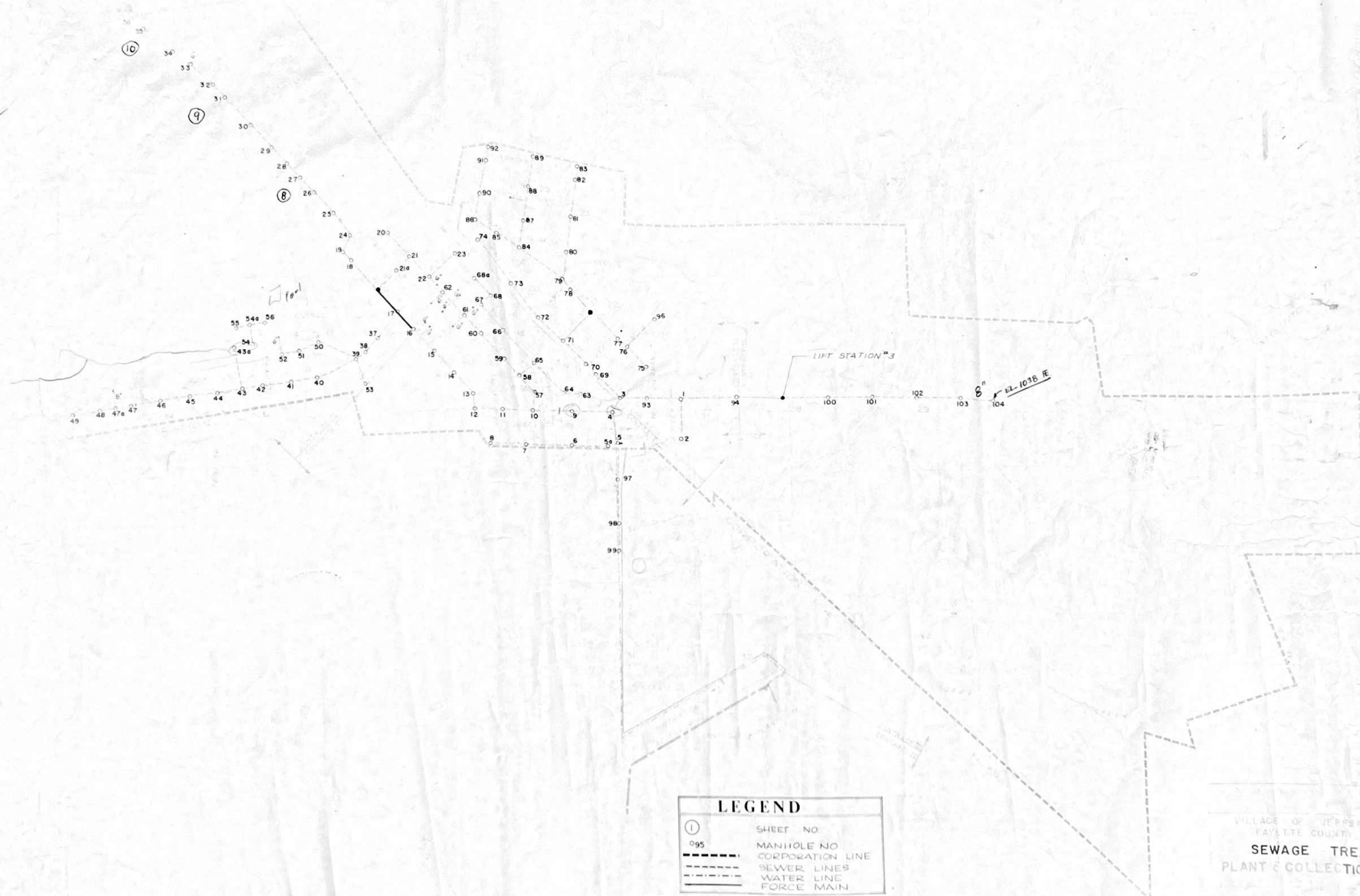
200 tons for transfer

6 TANKS

LEGEND

M. M. BRIDGES
 VILLAGE ENGINEER
 LAYETTE CO.
 SEWAGE TREATMENT
 PLANT & COLLECTION





LEGEND

①	SHEET NO
095	MANHOLE NO
---	CORPORATION LINE
---	SEWER LINES
---	WATER LINE
---	FORCE MAIN

VILLAGE OF JEFFERSON
 FAYETTE COUNTY
**SEWAGE TREATMENT
 PLANT & COLLECTION**

1 1/2" = 1' AS BUILT
 AC LIME DIVISION JUN 67