

VILLAGE OF HARTVILLE

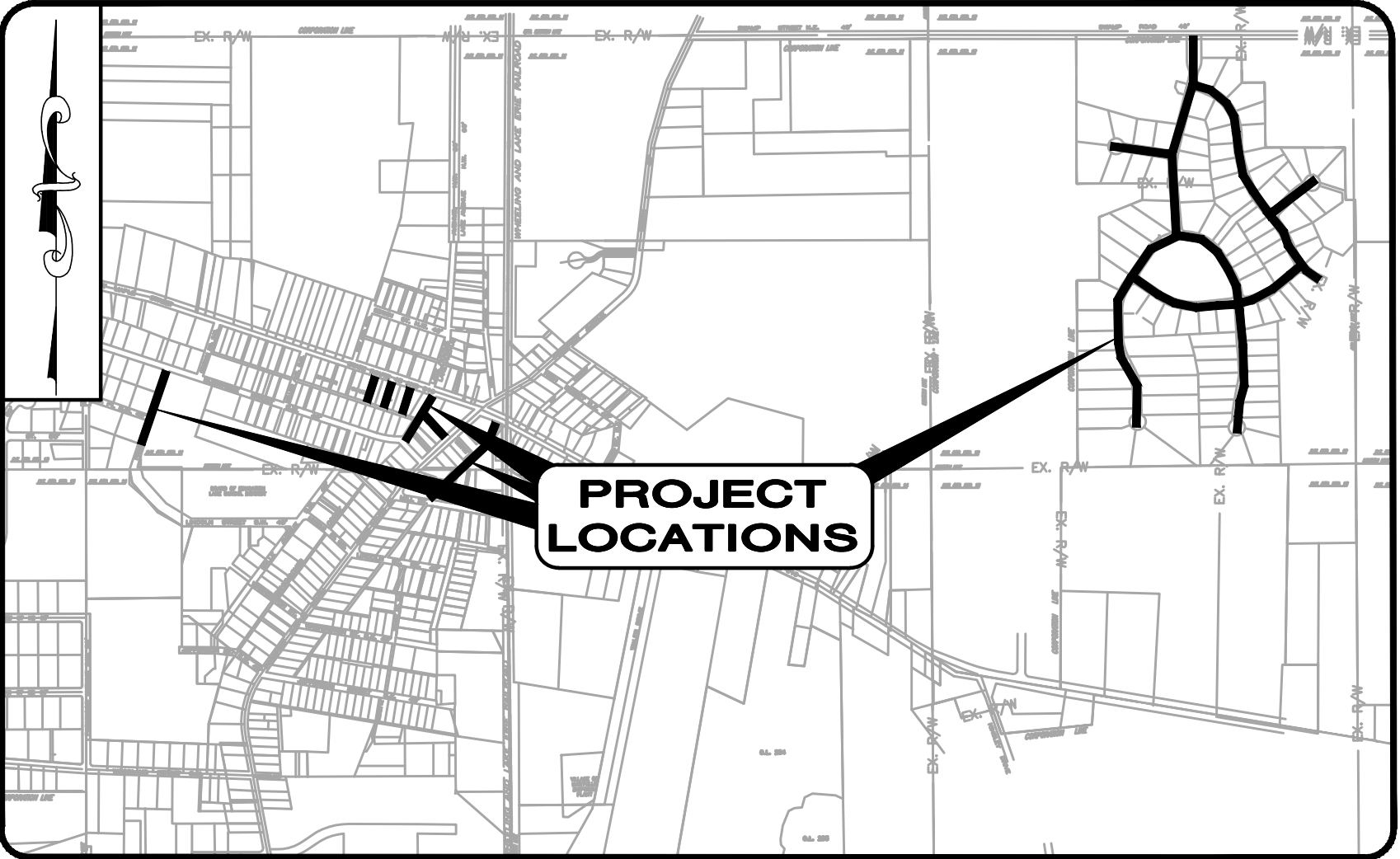
2026 PAVING PROGRAM

STARK COUNTY, OHIO

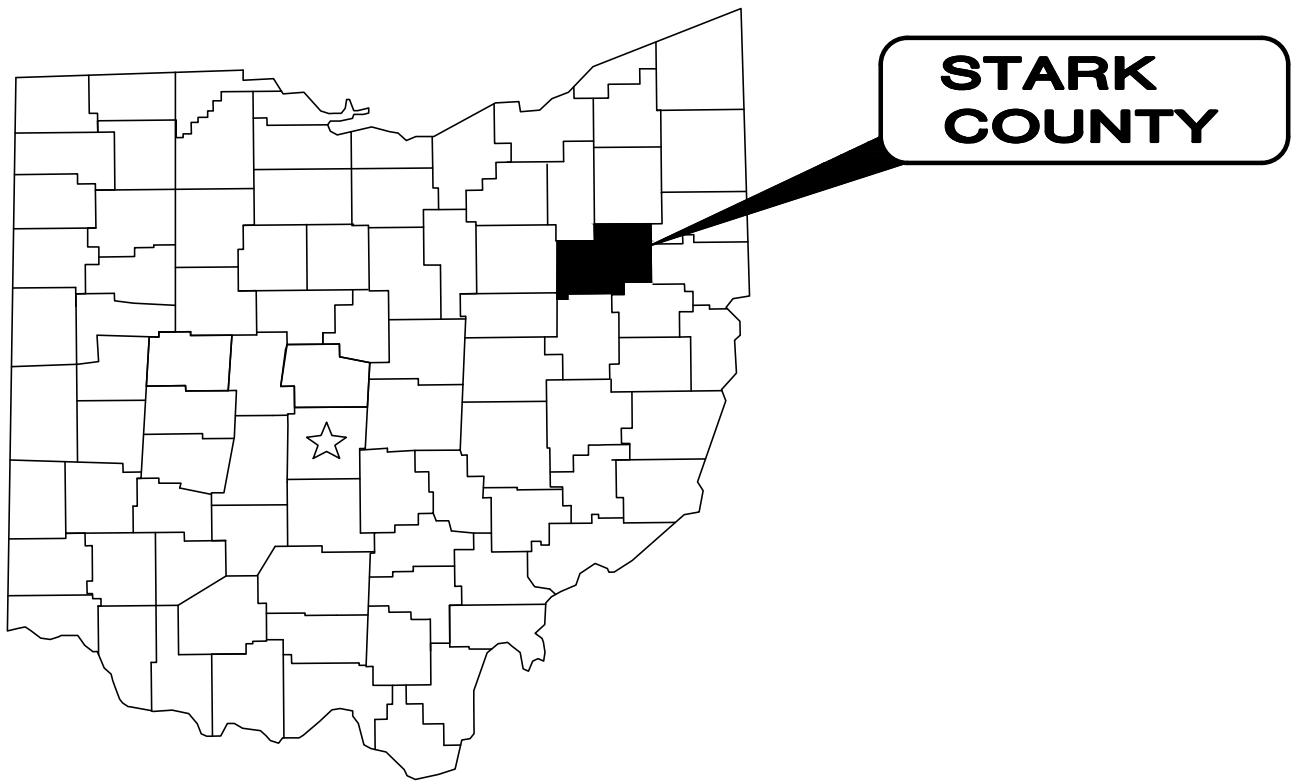
Sheet List Table	
Sheet Number	Sheet Title
1	COVER SHEET
2	GENERAL NOTES
3	TYPICAL SECTION
4	AREA MAP
5	PLAN — 1
6	PLAN — 2
7	PLAN — 3
8	PLAN — 4
9	PLAN — 5
10	PLAN — 6
11	PLAN — 7
12	PLAN — 8
13	PLAN — 9
14	PLAN — 10
15	PLAN — 11
16	DETAILS

PART A

FEB 2026



LOCATION MAP
NOT TO SCALE



VILLAGE OF HARTVILLE OFFICIALS

CINDY BILLINGS — MAYOR
ERIC WILLIAMS — SOLICITOR
SCOTT VARNEY — FISCAL OFFICER

COUNCIL

CHRIS RAMSBURG
TOM HOUGH
MATT KADAS
TIM HAYDEN
JIM SULLIVAN
MONICA GOODSPEED

BOARD OF PUBLIC AFFAIRS

SCOTT GOODSPEED
SHARI CHAMBERS
NORM ANDERSON



OUPS ONE CALL-UTILITY LIST:

CANTON WATER DEPARTMENT
2664 HARRISBURG RD. N.E.
CANTON, OHIO 44705-7904
ATTN: ENGINEERING OFFICE
PHONE: (330) 489-3310
ATTN: LEWIS MILLER
lewis.miller@cantonohio.gov

FIRST ENERGY
282 STATE ROUTE 43
HARTVILLE, OHIO 44632
ATTN: EARL CLEVENGER
PHONE: (330) 877-9324
eclevenger@firstenergycorp.com

FE Customer Service:
800-633-4766

ENBRIDGE GAS OHIO
(FORMERLY DOMINION ENERGY)
ATTN: JAMES NICKLE
PHONE: (216) 210-9155
jamie.nickle@enbridge.com

SPECTRUM
5520 WHIPPLE AVENUE N.W.
NORTH CANTON, OHIO 44720
ATTN: RON ICKES
PHONE: (216) 392-7964
ron.ickes@charter.com

AT&T
208 PORTAGE TRAIL
CUYAHOGA FALLS, OH. 44221
ATTN: CHRISTOPHER MERANTO
PHONE: (440) 590-0610
cm4432@att.com



ENGINEERS SEAL:



SIGNED:
DATE: 2/12/2026

ENGINEER'S PROJECT No. 41933

1. UNDERGROUND BUILDING SERVICE UTILITY LINES ARE NOT SHOWN ON THE PLANS. THE CONTRACTOR SHALL BE RESPONSIBLE FOR LOCATING, MAINTAINING AND REPLACING AS NECESSARY TO ENSURE CONTINUAL SERVICE TO BUILDINGS.
2. THE CONTRACTOR IS RESPONSIBLE TO CALL OHIO UTILITIES PROTECTION SERVICE @ 1-800-362-2764, THREE WORKING DAYS PRIOR TO CONSTRUCTION.

GENERAL NOTES

MANHOLES, CATCH BASINS, MONUMENT BOXES, WATER VALVE BOXES AND OTHER STREET CASTINGS WILL BE RAISED OR LOWERED FLUSH WITH THE NEW SURFACE. ANY METER OR VALVE BOX ENCOUNTERED WITHIN THE WORK SITE SHALL BE EXPOSED. PAYMENT FOR THIS WORK SHALL BE INCLUDED IN THE UNIT PRICE BID FOR OTHER ITEMS OF WORK EXCEPT WHEN BID AS A SEPARATE ITEM.

THE CONTRACTOR SHALL PRESERVE ALL CORNERSTONES, IRON PINS, CONCRETE MONUMENTS, OR ANY TYPE OF LAND MONUMENT. HE SHALL HAVE ALL MONUMENTS IN THE PROXIMITY OF THE WORK REFERENCED. HE SHALL REPLACE DESTROYED OR DAMAGED MONUMENTS AND SHALL FURNISH A CERTIFICATION BY A REGISTERED SURVEYOR THAT THE MONUMENTS HAVE BEEN RESTORED.

BEFORE THE VILLAGE WILL APPROVE AND ACCEPT THE WORK AND RELEASE THE GUARANTY RETAINER, THE CONTRACTOR SHALL FURNISH THE VILLAGE A WRITTEN REPORT INDICATING THE RESOLUTION OF ANY AND ALL PROPERTY DAMAGE CLAIMS FILED WITH THE CONTRACTOR BY ANY PARTY DURING THE CONSTRUCTION PERIOD. THE INFORMATION TO BE SUPPLIED SHALL INCLUDE, BUT NOT BE LIMITED TO, NAME OF CLAIMANT, DATE FILED WITH CONTRACTOR, NAME OF INSURANCE COMPANY AND/OR ADJUSTER HANDLING CLAIM, HOW CLAIM WAS RESOLVED AND IF CLAIM WAS NOT RESOLVED FOR THE FULL AMOUNT, A STATEMENT INDICATING THE REASON FOR SUCH ACTION.

THE CONTRACTOR SHALL PERFORM WORK AS TO NOT DISTURB, DAMAGE OR DESTROY ANY MAILBOX, PAPERBOX, TELEPHONE OR POWER POLES, SIGNS, SHRUBS, LANDSCAPING ITEMS, UNDERGROUND UTILITIES, ETC. ANY ITEM DAMAGED OR DESTROYED SHALL BE REPLACED AT THE CONTRACTOR'S EXPENSE. ANY ITEM DISTURBED OR IN CONFLICT WITH THE WORK TO BE PERFORMED SHALL BE REMOVED AND RESET AT THE CONTRACTOR'S EXPENSE. PRIOR ENGINEER APPROVAL IS REQUIRED BEFORE ANY OF THE ABOVE ITEMS ARE PERFORMED.

IT SHALL BE THE RESPONSIBILITY OF THE CONTRACTOR TO APPLY WHEN ORDERED BY THE OWNER WATER OR CALCIUM CHLORIDE FOR THE ALLEVIATION OR PREVENTION OF DUST NUISANCE ORIGINATING FROM HIS CONSTRUCTION ACTIVITIES. SUFFICIENT QUANTITIES OF CALCIUM CHLORIDE SHALL BE STORED ON THE JOB SITE AT ALL TIMES TO BE USED FOR DUST CONTROL. THE COST OF DUST CONTROL SHALL BE INCLUDED IN THE UNIT BID PRICES FOR ALL ITEMS OF THE PROPOSAL.

ALL PAVEMENT REMOVAL AND REPLACEMENT, NEW PAVEMENT AND ASSOCIATED ROADWAY WORK SHALL BE IN ACCORDANCE WITH THE STATE OF OHIO DEPARTMENT OF TRANSPORTATION, HEREINAFTER REFERRED TO AS "ODOT", CONSTRUCTION AND MATERIAL SPECIFICATIONS, STANDARD CONSTRUCTION DRAWINGS AND SUPPLEMENTAL SPECIFICATIONS, 2023 EDITION, WITH THE MODIFICATIONS AS SET FORTH IN THESE SPECIFICATIONS.

THE CONTRACTOR SHALL NOTIFY THE VILLAGE OF HARTVILLE POLICE AND FIRE DEPARTMENTS AT LEAST 24 HOURS IN ADVANCE OF ANY STREET CLOSING OR TRAFFIC CHANGE.

THE CONTRACTOR SHALL FIELD VERIFY ALL DIMENSIONS BEFORE INSTALLING ANY PROPOSED MANHOLES, CATCH BASINS OR CONDUIT. ANY ADJUSTMENTS NEEDED SHALL BE APPROVED BY THE ENGINEER.

EXISTING SEWER AND WATER SERVICE CONNECTIONS SHALL BE PROTECTED AND MAINTAINED IN SERVICE. ANY EXISTING WATER, SANITARY SEWER, AND GAS LINE, IN OR OUTSIDE OF THE CONSTRUCTION LIMITS, DAMAGED DURING CONSTRUCTION OF THE PROPOSED PROJECT, WILL BE REPLACED AT THE CONTRACTOR'S EXPENSE.

IT SHALL BE THE RESPONSIBILITY OF THE CONTRACTOR TO NOTIFY THE ENGINEER FORTY-EIGHT (48) HOURS IN ADVANCE OF BEGINNING WORK WHICH REQUIRES COMPACTION TESTING AND/OR PRE-POUR INSPECTION PRIOR TO PLACEMENT OF PAVEMENT. WORK WILL NOT BEGIN UNTIL TESTING AND/OR INSPECTION HAS BEEN COMPLETED AND APPROVED BY THE ENGINEER.

ALL NEW CONDUITS, INLETS, CATCH BASINS, AND MANHOLES CONSTRUCTED AS A PART OF THE PROJECT SHALL BE FREE OF ALL FOREIGN MATTER AND IN A CLEAN CONDITION BEFORE THE PROJECT WILL BE ACCEPTED BY THE VILLAGE.

ALL EXISTING SEWERS INSPECTED SHALL BE MAINTAINED AND LEFT IN A CONDITION REASONABLY COMPARABLE TO THAT DETERMINED BY THE ORIGINAL INSPECTION PRIOR TO CONSTRUCTION. ANY CHANGE IN THE CONDITION RESULTING FROM THE CONTRACTOR'S OPERATIONS SHALL BE CORRECTED BY THE CONTRACTOR TO THE SATISFACTION OF THE ENGINEER.

COST OF CLEARING AND GRUBBING, TREE REMOVAL, REMOVAL OF EXISTING PAVEMENT, SIDEWALK, CURB, MANHOLES, CATCH BASINS, FIRE HYDRANTS OR OTHER STRUCTURES ARE TO BE INCLUDED IN THE UNIT PRICE BID FOR ALL ITEMS IN THE PROPOSAL UNLESS LISTED AS A SEPARATE PAY ITEM.

ALL SOIL AREAS DISTURBED SHALL BE TOPSOILED (4" THICK COMPACTED), SEEDED AND MULCHED. ALL TOPSOIL WORK SHALL BE INCLUDED IN THE UNIT BID PRICES FOR ALL ITEMS OF THE PROPOSAL.

EXISTING UTILITIES

EACH CONTRACTOR SHALL VISIT THE SITE PERSONALLY TO ASCERTAIN THE NATURE OF THE WORK AND THOROUGHLY FAMILIARIZE HIMSELF WITH THE SITE PRIOR TO BID SUBMISSION.

THE LOCATIONS OF THE UNDERGROUND UTILITIES ARE NOT SHOWN ON THE PLANS. CONTRACTOR TO LOCATE UTILITIES WITH UTILITY PROVIDER AND USE EXTREME CAUTION AROUND UTILITY LINES.

THE DATA SHALL BE VERIFIED IN THE FIELD BY THE CONTRACTOR. THE EXISTENCE OF FACILITIES ABOVE OR BELOW GROUND, WHICH MAY NOT BE SHOWN, WILL NOT BE A BASIS FOR A CLAIM FOR EXTRA WORK.

BEFORE ANY WORK IS STARTED THAT WILL INTERFERE WITH THE EXISTING UTILITIES, THE CONTRACTOR SHALL CALL THE "OHIO UTILITIES PROTECTION SERVICE", AT 1-800-362-2764, FORTY-EIGHT (48) HOURS IN ADVANCE OF THE WORK. NON-MEMBER UTILITIES MUST BE CONTACTED DIRECTLY.

THE CONTRACTOR SHALL TAKE ALL NECESSARY PRECAUTIONS, AT NO ADDITIONAL EXPENSE TO THE VILLAGE OF HARTVILLE, TO AVOID DAMAGE TO EXISTING UNDERGROUND AND OVERHEAD UTILITY LINES DURING THE ENTIRE PROJECT. IN THE EVENT OF DAMAGE TO EXISTING PUBLIC AND/OR PRIVATE UTILITIES, THE AGENCY CONCERNED SHALL BE NOTIFIED IMMEDIATELY AND ALL REPAIR WORK SHALL BE EXECUTED IN ACCORDANCE WITH THE SPECIFICATIONS OF THE RESPECTIVE AGENCY AT NO ADDITIONAL EXPENSE TO THE VILLAGE OF HARTVILLE, INCLUDING ANY INSPECTION FEES OR MAINTENANCE CREWS.

KNOWN UTILITIES WITHIN THE LIMITS OF THIS PROJECT ARE LISTED ON THE TITLE SHEET.

WHERE EXISTING POWER OR TELEPHONE POLES ARE IN CLOSE PROXIMITY TO WORK, THE CONTRACTOR SHALL COORDINATE HIS WORK EFFORTS WITH THOSE OF THE UTILITY COMPANIES SUCH THAT THE MAINTENANCE OF THEIR EXISTING FACILITIES CAN BE MAINTAINED AND PROTECTED DURING THE TIME WORK IS GOING ON ADJACENT TO THE POLE.

THE COST FOR ANY REQUIRED PROTECTION OR RELOCATION OF EXISTING POWER OR TELEPHONE POLES OR NATURAL GAS LINES SHALL NOT BE THE RESPONSIBILITY OF THE VILLAGE OF HARTVILLE.

DELAYS TO THE CONTRACTOR AS A RESULT OF TIMING OF POLE RELOCATION OR PROTECTION OR NATURAL GAS LINE RELOCATION/REPLACEMENT SHALL NOT BE CONSIDERED COMPENSABLE DELAYS, AS IT SHALL BE THE CONTRACTOR'S RESPONSIBILITY TO COORDINATE HIS WORK IN CONFORMANCE TO THE UTILITY COMPANY'S SCHEDULE.

WHERE PLANS PROVIDE FOR A PROPOSED CONDUIT TO BE CONNECTED TO, OR CROSS OVER OR UNDER AN EXISTING SEWER OR UNDERGROUND UTILITY, THE CONTRACTOR SHALL LOCATE THE EXISTING PIPES OR UTILITIES BOTH AS TO LINE AND GRADE BEFORE STARTING TO LAY THE PROPOSED CONDUIT.

IF IT IS DETERMINED THAT THE ELEVATION OF THE EXISTING CONDUIT, OR EXISTING APPURTENANCE TO BE CONNECTED, DIFFERS FROM THE PLAN ELEVATION OR RESULTS IN A CHANGE IN THE PLAN CONDUIT SLOPE, THE ENGINEER SHALL BE NOTIFIED BEFORE STARTING CONSTRUCTION OF ANY PORTION OF THE PROPOSED CONDUIT WHICH WILL BE AFFECTED BY THE VARIANCE IN THE EXISTING ELEVATIONS.

IF IT IS DETERMINED THAT THE PROPOSED CONDUIT WILL INTERSECT AN EXISTING SEWER OR UNDERGROUND UTILITY IF CONSTRUCTED AS SHOWN ON THE PLAN, THE ENGINEER SHALL BE NOTIFIED BEFORE STARTING CONSTRUCTION OF ANY PORTION OF THE PROPOSED CONDUIT WHICH WOULD BE AFFECTED BY THE INTERFERENCE WITH AN EXISTING FACILITY.

EXISTING ROOF DRAINS, FOOTER DRAINS, OR YARD DRAINS, DISTURBED BY THE WORK, SHALL BE PROVIDED WITH UNOBSTRUCTED OUTLETS BY CONNECTING A CONDUIT THROUGH THE CURB OR INTO A DRAINAGE STRUCTURE. THE LOCATION, TYPE, SIZE AND GRADE OF THE NEW CONDUIT REQUIRED TO REPLACE OR EXTEND THE EXISTING DRAIN WILL BE DETERMINED BY THE ENGINEER. THIS WORK SHALL BE INCLUDED IN THE UNIT PRICE BID FOR ALL ITEMS OF THE PROPOSAL.

ANY ACTIVE CONNECTION TO A SANITARY SEWER ENCOUNTERED DURING CONSTRUCTION SHALL BE RECONNECTED TO THE EXISTING SANITARY SEWER TO THE SATISFACTION OF THE ENGINEER.

STORM SEWER

ALL PIPE USED FOR STORM SEWER INSTALLATION ON THIS PROJECT SHALL CONFORM TO ODOT ITEM 611 - CONDUIT TYPE B - REINFORCED CONCRETE CIRCULAR PIPE OR POLYVINYL CHLORIDE CORRUGATED SMOOTH INTERIOR PIPE.

ALL EXISTING STORM DRAINAGE PIPING ENCOUNTERED DURING CONSTRUCTION SHALL BE CONNECTED INTO THE NEW STORM SEWER, CONNECTING A CONDUIT THROUGH THE CURB OR INTO A DRAINAGE STRUCTURE OR ABANDONED, AS DIRECTED BY THE ENGINEER. COST TO BE INCLUDED IN THE UNIT PRICE BID FOR ALL ITEMS OF THE PROPOSAL. THIS INCLUDES DOWNSPOUT CONNECTIONS FROM EXISTING BUILDINGS.

CONTRACTOR TO PROTECT ALL SEWER STRUCTURES AND CLEAN ALL SEWER STRUCTURES PRIOR TO LEAVING SITE. COST FOR REPLACING ANY DAMAGED STRUCTURES DURING CONSTRUCTION OR ANY CLEANING RELATED TO CONSTRUCTION ACTIVITIES IS INCIDENTAL TO THE PAVING ITEMS.

PAVEMENT

ITEM 204 EXCAVATION OF SUBGRADE MATERIAL AND EMBANKMENT WITH GRANULAR MATERIAL, AS PER PLAN, CONTINGENCY, AS DIRECTED
NOTE: CONTRACTOR TO REFER TO SUBGRADE REPAIR DETAIL ON SHEET 16 FOR ANY SUBGRADE REPAIR NEEDED. SEE PRICES TO INCLUDE FOR ADDITIONAL INFORMATION.

ITEM 253 PAVEMENT REPAIR, AS PER PLAN
NOTE: CONTRACTOR TO REFER TO PAVEMENT REPAIR DETAIL ON SHEET 16 FOR ANY ASPHALT REPAIR NEEDED AFTER MILLING SURFACE. SEE PRICES TO INCLUDE FOR ADDITIONAL INFORMATION.

ITEM 254 PAVEMENT PLANING, ASPHALT CONCRETE, AS PER PLAN
NOTE: CONTRACTOR TO REFER TO TYPICAL SECTION ON SHEET 3. SEE PRICES TO INCLUDE FOR ADDITIONAL INFORMATION.

ITEM 441 ASPHALT CONCRETE SURFACE COURSE, TYPE 1, (448), AS PER PLAN
NOTE: CONTRACTOR TO REFER TO TYPICAL SECTION ON SHEET 3. SEE PRICES TO INCLUDE FOR ADDITIONAL INFORMATION.

ITEM 441 ASPHALT CONCRETE INTERMEDIATE COURSE, TYPE 2, (448), AS PER PLAN
NOTE: CONTRACTOR TO REFER TO TYPICAL SECTION ON SHEET 3. SEE PRICES TO INCLUDE FOR ADDITIONAL INFORMATION.

STORM/SANITARY SEWER

ITEM 611 CATCH BASIN ADJUSTED TO GRADE, AS PER PLAN
NOTE: CONTRACTOR TO REFER TO CATCH BASIN ADJUST TO GRADE DETAIL ON SHEET 16. OWNER/ENGINEER WILL MARK CATCH BASINS REQUIRING ADJUSTMENT. ANY STRUCTURE PAVED OVER IN THE PERFORMANCE OF THE WORK WILL NOT BE ELIGIBLE FOR PAYMENT, BUT WILL BE ADJUSTED AT THE CONTRACTOR'S EXPENSE. SEE PRICES TO INCLUDE FOR ADDITIONAL INFORMATION.

ITEM 611 MANHOLE ADJUSTED TO GRADE, AS PER PLAN
NOTE: CONTRACTOR TO REFER TO MANHOLE ADJUST TO GRADE DETAIL ON SHEET 16. OWNER/ENGINEER WILL MARK MANHOLES REQUIRING ADJUSTMENT. ANY STRUCTURE PAVED OVER IN THE PERFORMANCE OF THE WORK WILL NOT BE ELIGIBLE FOR PAYMENT, BUT WILL BE ADJUSTED AT THE CONTRACTOR'S EXPENSE. SEE PRICES TO INCLUDE FOR ADDITIONAL INFORMATION.
CONTRACTOR TO MATCH SANITARY/STORM SEWER STRUCTURES RIM ELEVATION WHEN INSTALLING SURFACE COURSE. STRUCTURES HIGHER OR LOWER THAN SURFACE COURSE WILL NOT BE ACCEPTED. IF DETERMINED IN THE FIELD AND APPROVED BY ENGINEER TO ADJUST STRUCTURES, THE CONTRACTOR WILL BE COMPENSATED PER THE CONTINGENCY ITEM UNIT COST ESTABLISHED ON SHEET 3.

MAINTENANCE OF TRAFFIC

PRIOR TO THE PRE-CONSTRUCTION MEETING, THE CONTRACTOR SHALL SUBMIT A PROPOSED PROJECT CONSTRUCTION SCHEDULE AND A DETAILED MAINTENANCE OF TRAFFIC PLAN TO THE VILLAGE OF HARTVILLE. BOTH THE SCHEDULE AND MAINTENANCE OF TRAFFIC PLAN SHALL BE APPROVED BY THE VILLAGE PRIOR TO THE START OF CONSTRUCTION. COST OF THIS WORK TO BE INCLUDED IN THE UNIT PRICE BID FOR ITEM 614 - MAINTAINING TRAFFIC.

	NO	REVISION	DATE	<div>VILLAGE OF HARTVILLE 2026 PAVING PROGRAM</div> <div>STARK COUNTY</div> <div>VILLAGE OF HARTVILLE, OHIO</div>	ISSUED FOR:	BIDDING	<div>GENERAL NOTES</div>	PROJECT NO.	
					ISSUE DATE:	2/12/2026		41933	
					SCALE:	AS NOTED		DISCIPLINE	
					DESIGNED BY:	JCR		CIVIL	
					DRAWN BY:	JCR		SHEET NAME	
					CHECKED BY:	SAA		GN-01	
								SHEET	OF
								2	16

GENERAL NOTES (CONTINUED)

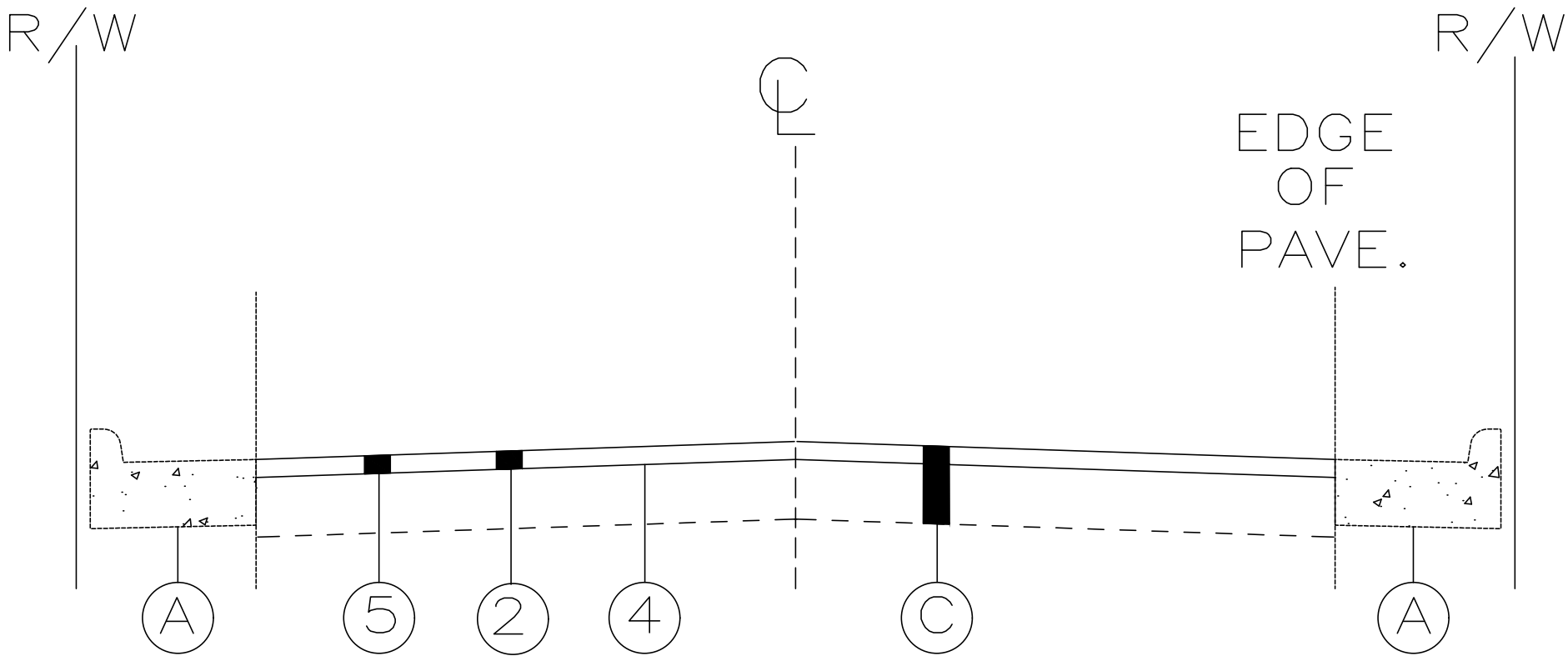
MAINTAINING TRAFFIC SHALL BE IN ACCORDANCE WITH ODOT ITEM 614 AND THE OHIO MANUAL OF UNIFORM TRAFFIC CONTROL DEVICES.

ONE LANE LOCAL ACCESS TO ALL ABUTTING PROPERTIES SHALL BE MAINTAINED AT ALL TIMES. ACCESS TO ALL DRIVEWAYS SHALL ALSO BE MAINTAINED AT ALL TIMES EXCEPTING THE TIME WHEN CONCRETE CURB OR DRIVE APRONS ARE CURING.

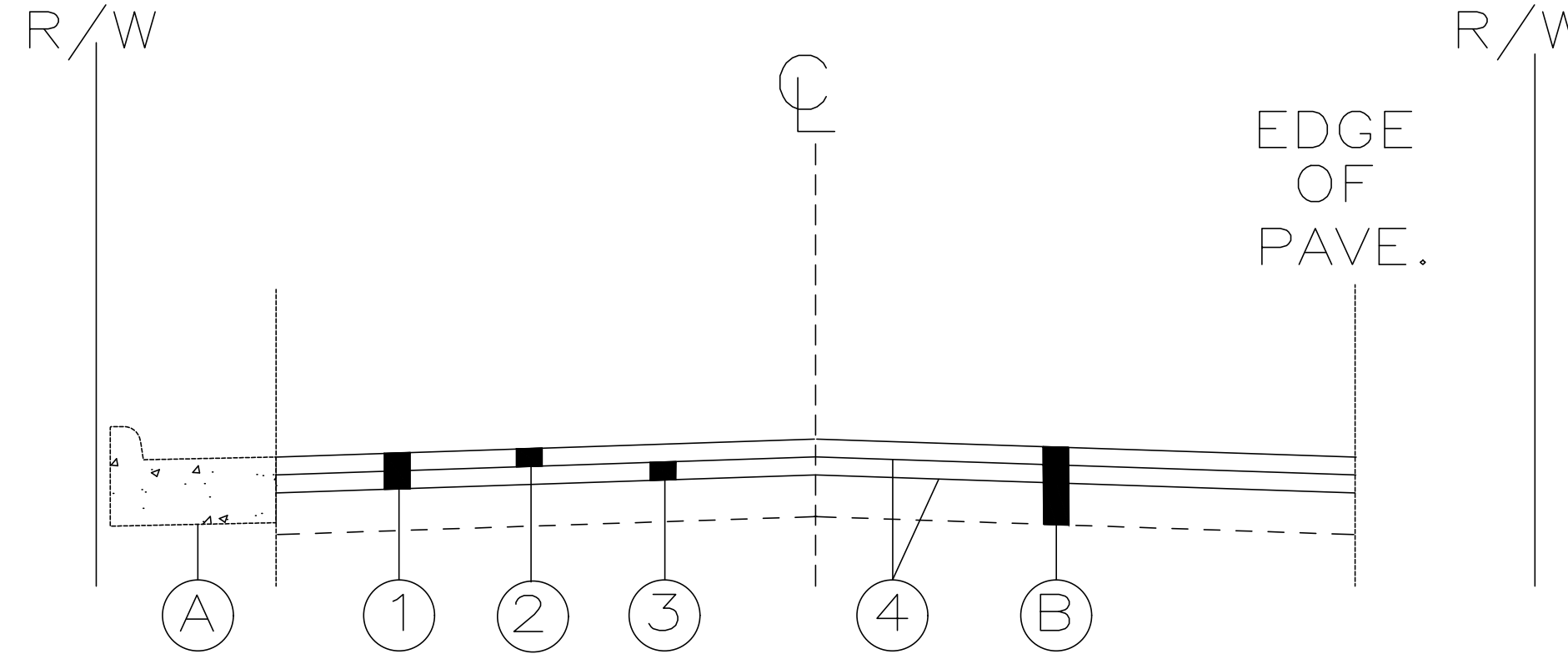
LOCATION FOR ODOT ITEM 206, CEMENT STABILIZED SUBGRADE, 12 INCHES DEEP, WILL BE FIELD DETERMINED AND BE PERFORMED ONLY UNDER WRITTEN DIRECTION OF THE DESIGN ENGINEER.

CONTINGENCY QUANTITIES
THE FOLLOWING ITEMS OF WORK HAVE BEEN INCLUDED AS CONTINGENCY QUANTITIES ON THE PROJECT BID FORM, ONLY TO BE USED AS DIRECTED BY THE ENGINEER:

ITEM 204	EXCAVATION OF SUBGRADE MATERIAL AND EMBANKMENT WITH GRANULAR MATERIAL, AS PER PLAN, CONTINGENCY, AS DIRECTED	560 CY
ITEM 204	GEOGRID	1120 SY
ITEM 206	CEMENT STABILIZED SUBGRADE, 12 INCHES DEEP	680 SY
ITEM 253	PAVEMENT REPAIR, AS PER PLAN	3050 SY
ITEM 609	COMBINATION CURB AND GUTTER, TYPE 3	100 FT
ITEM 611	CATCH BASIN ADJUSTED TO GRADE, AS PER PLAN	11 EACH
ITEM 611	MANHOLE ADJUSTED TO GRADE, AS PER PLAN	20 EACH



DANBURY GLEN ENTRANCE
TYPICAL SECTION
SCALE: NONE



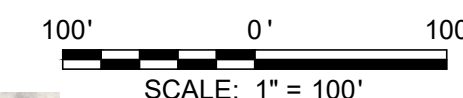
TYPICAL SECTION
SCALE: NONE

TYPICAL SECTIONS LEGEND

- PROPOSED
- ① PAVEMENT PLANING (3" AVERAGE)
 - ② 1-1/4" ASPHALT CONCRETE SURFACE COURSE TYPE 1, (448), AS PER PLAN
 - ③ 1-3/4" ASPHALT CONCRETE INTER-MEDIATE COURSE TYPE 2, (448), AS PER PLAN
 - ④ NON-TRACKING TACK COAT FOR INTERMEDIATE COURSE AND MILLED SURFACE, 0.07 GAL/SY
 - ⑤ PAVEMENT PLANING (1-1/4" AVERAGE)
NOTE: THIS ITEM ONLY PERTAINS TO DANBURY GLEN ENTRANCE TYPICAL SECTION

- EXISTING
- Ⓐ EXISTING CURB AND GUTTER (IF APPLICABLE) - SURFACE COURSE ELEVATION TO MEET TOE OF GUTTER ELEVATION
 - Ⓑ 4"- 9" ASPHALT (VARIES)
 - Ⓒ 4" - 8" ASPHALT (VARIES)

NOTE: EXISTING INFORMATION IS PER CORE REPORT. SEE CORE REPORT FOR MORE INFORMATION.

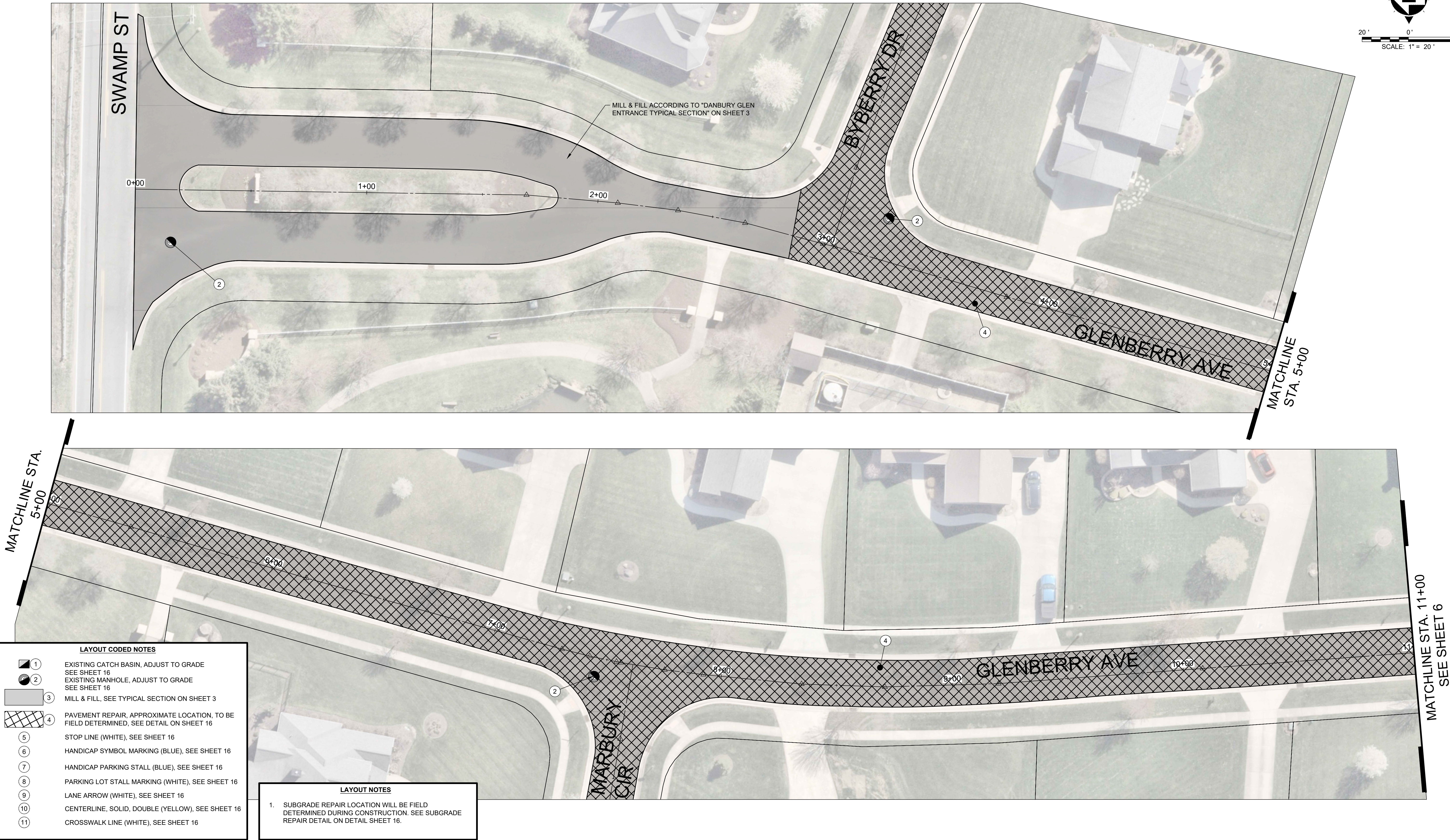
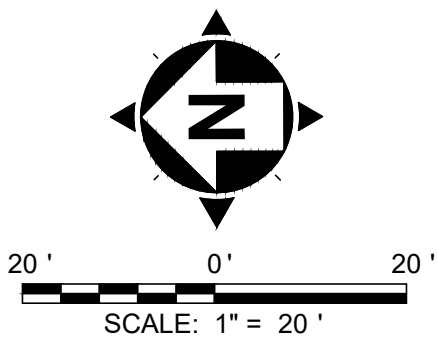


VILLAGE OF HARTVILLE 2026 PAVING PROGRAM

VILLAGE OF HARTVILLE, OHIO

AREA MAP

	PROJECT NO.	
	41933	
	DISCIPLINE	
	CIVIL	
	SHEET NAME	
	AREA MAP	
SHEET		OF
4		16



LAYOUT CODED NOTES

1	EXISTING CATCH BASIN, ADJUST TO GRADE SEE SHEET 16
2	EXISTING MANHOLE, ADJUST TO GRADE SEE SHEET 16
3	MILL & FILL, SEE TYPICAL SECTION ON SHEET 3
4	PAVEMENT REPAIR, APPROXIMATE LOCATION, TO BE FIELD DETERMINED, SEE DETAIL ON SHEET 16
5	STOP LINE (WHITE), SEE SHEET 16
6	HANDICAP SYMBOL MARKING (BLUE), SEE SHEET 16
7	HANDICAP PARKING STALL (BLUE), SEE SHEET 16
8	PARKING LOT STALL MARKING (WHITE), SEE SHEET 16
9	LANE ARROW (WHITE), SEE SHEET 16
10	CENTERLINE, SOLID, DOUBLE (YELLOW), SEE SHEET 16
11	CROSSWALK LINE (WHITE), SEE SHEET 16

LAYOUT NOTES

- SUBGRADE REPAIR LOCATION WILL BE FIELD
DETERMINED DURING CONSTRUCTION. SEE SUBGRADE
REPAIR DETAIL ON DETAIL SHEET 16.



NO	REVISION	DATE

VILLAGE OF HARTVILLE
2026 PAVING PROGRAM

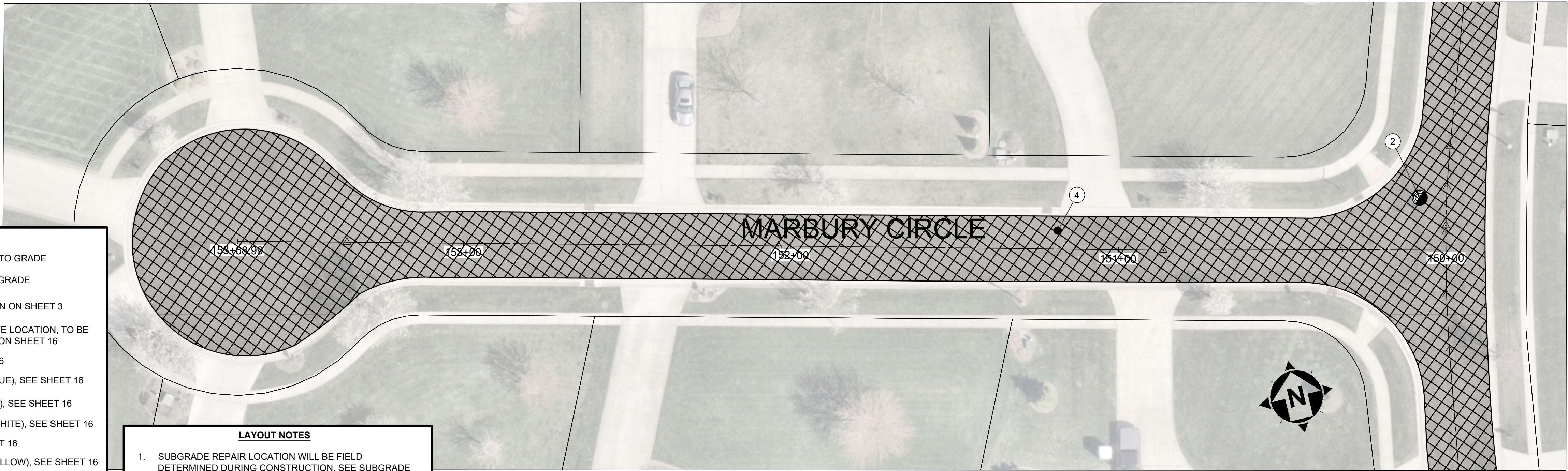
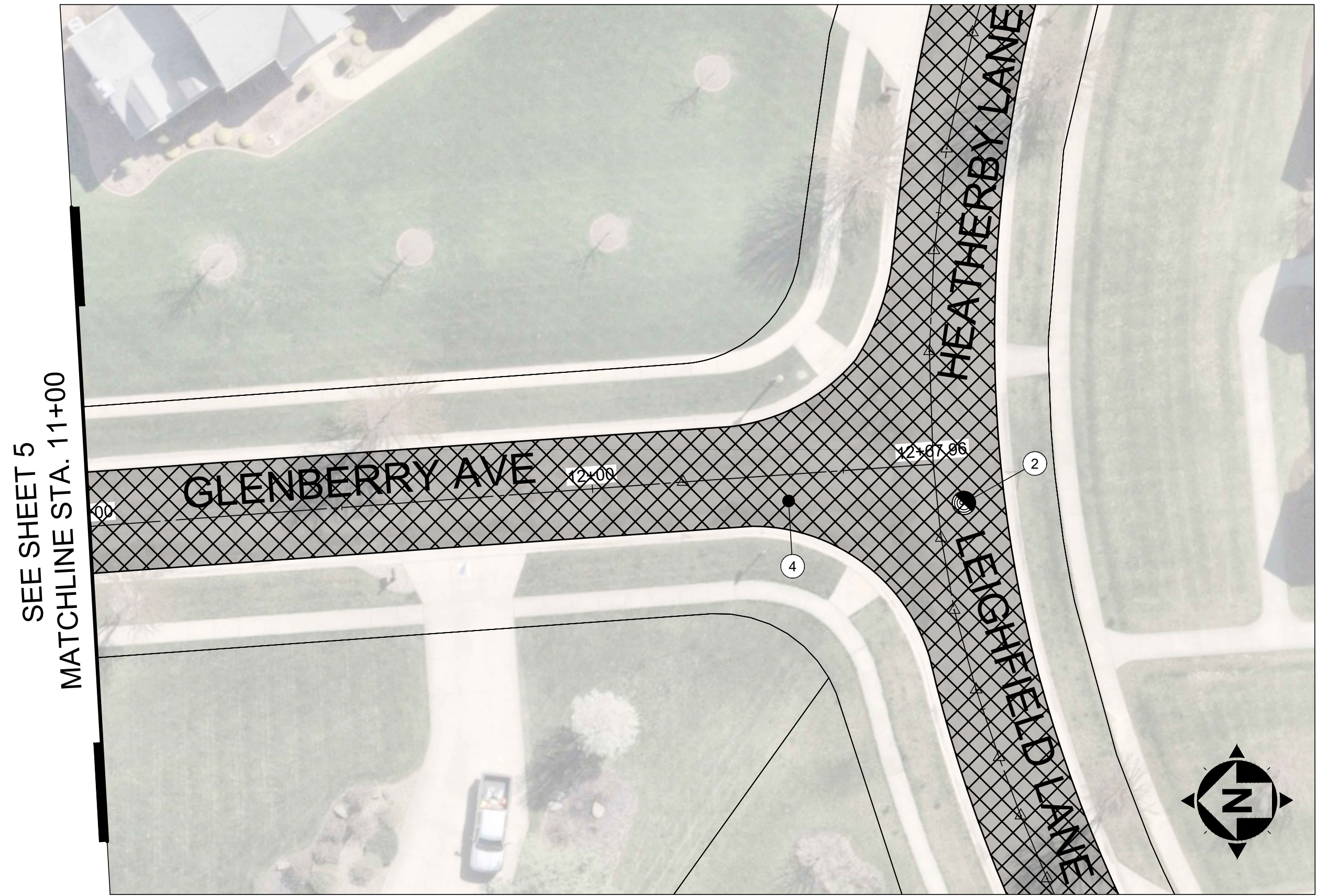
STARK COUNTY

VILLAGE OF HARTVILLE, OHIO

ISSUED FOR:	BIDDING
ISSUE DATE:	2/12/2026
SCALE:	AS NOTED
DESIGNED BY:	JCR
DRAWN BY:	JCR
CHECKED BY:	SAA

PLAN VIEW
GLENBERRY AVE
STA 0+00 TO 11+00

PROJECT NO.	
41933	
DISCIPLINE	
CIVIL	
SHEET NAME	
PLAN - 1	
SHEET	OF
5	16



LAYOUT CODED NOTES

- 1 EXISTING CATCH BASIN, ADJUST TO GRADE
SEE SHEET 16
- 2 EXISTING MANHOLE, ADJUST TO GRADE
SEE SHEET 16
- 3 MILL & FILL, SEE TYPICAL SECTION ON SHEET 3
- 4 PAVEMENT REPAIR, APPROXIMATE LOCATION, TO BE
FIELD DETERMINED, SEE DETAIL ON SHEET 16
- 5 STOP LINE (WHITE), SEE SHEET 16
- 6 HANDICAP SYMBOL MARKING (BLUE), SEE SHEET 16
- 7 HANDICAP PARKING STALL (BLUE), SEE SHEET 16
- 8 PARKING LOT STALL MARKING (WHITE), SEE SHEET 16
- 9 LANE ARROW (WHITE), SEE SHEET 16
- 10 CENTERLINE, SOLID, DOUBLE (YELLOW), SEE SHEET 16
- 11 CROSSWALK LINE (WHITE), SEE SHEET 16

LAYOUT NOTES

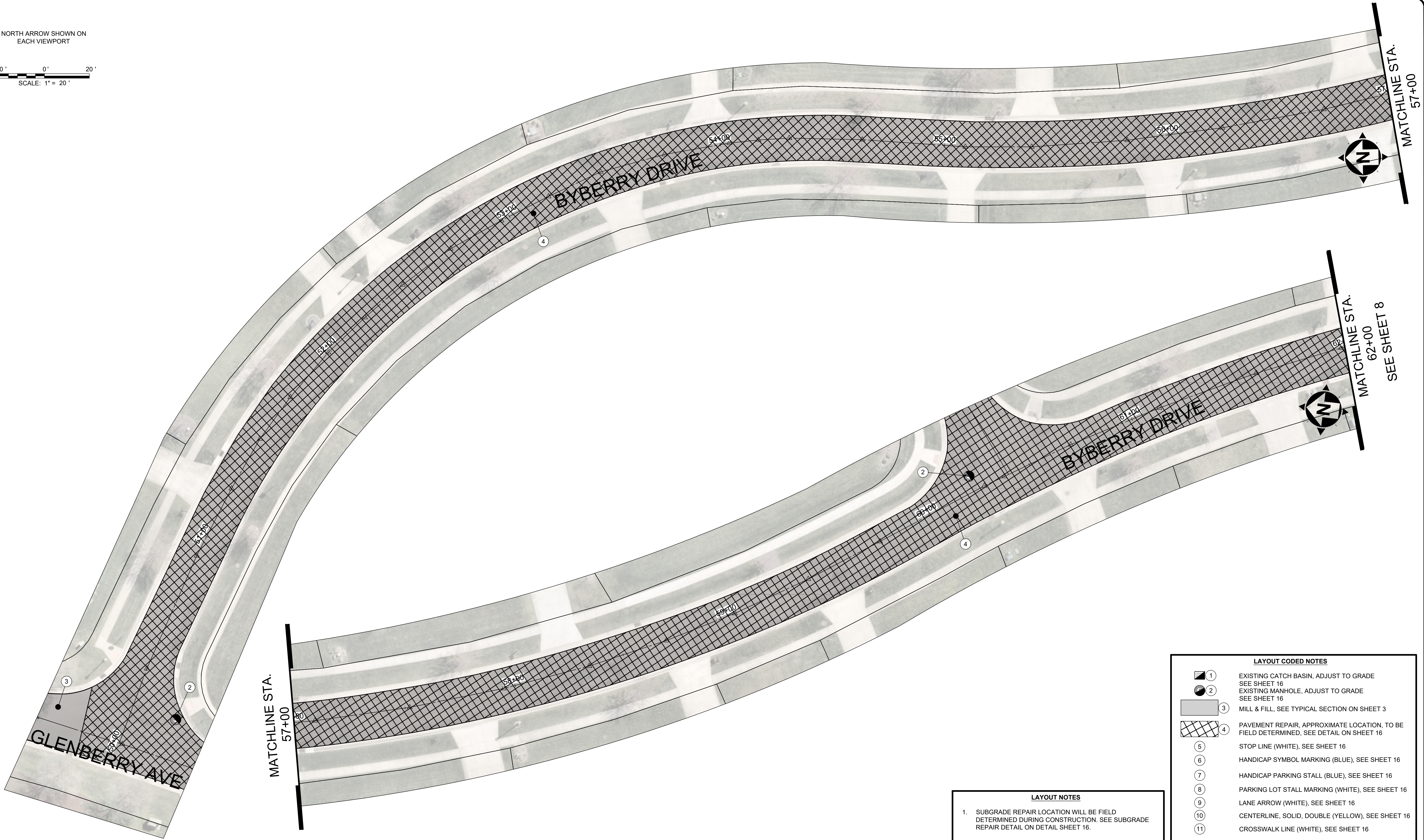
1. SUBGRADE REPAIR LOCATION WILL BE FIELD
DETERMINED DURING CONSTRUCTION. SEE SUBGRADE
REPAIR DETAIL ON DETAIL SHEET 16.

	NO	REVISION	DATE	<div>VILLAGE OF HARTVILLE 2026 PAVING PROGRAM</div> <div>STARK COUNTY</div> <div>VILLAGE OF HARTVILLE, OHIO</div>	ISSUED FOR:	BIDDING	<div>PLAN VIEW</div> <div>GLENBERRY AVE STA 11+00 TO 12+67 & MARBURY CIRCLE STA. 150+00 TO 153+68</div>	PROJECT NO.	
						41933			
						DISCIPLINE			
						CIVIL			
						SHEET NAME			
						PLAN - 2			
					DRAWN BY:	JCR	SHEET	OF	
					CHECKED BY:	SAA	6	16	

NORTH ARROW SHOWN ON
EACH VIEWPORT

20' 0' 20'

SCALE: 1" = 20'



LAYOUT NOTES

1. SUBGRADE REPAIR LOCATION WILL BE FIELD DETERMINED DURING CONSTRUCTION. SEE SUBGRADE REPAIR DETAIL ON DETAIL SHEET 16.

LAYOUT CODED NOTES	
	1 EXISTING CATCH BASIN, ADJUST TO GRADE SEE SHEET 16
	2 EXISTING MANHOLE, ADJUST TO GRADE SEE SHEET 16
	3 MILL & FILL, SEE TYPICAL SECTION ON SHEET 3
	4 PAVEMENT REPAIR, APPROXIMATE LOCATION, TO BE FIELD DETERMINED, SEE DETAIL ON SHEET 16
	5 STOP LINE (WHITE), SEE SHEET 16
	6 HANDICAP SYMBOL MARKING (BLUE), SEE SHEET 16
	7 HANDICAP PARKING STALL (BLUE), SEE SHEET 16
	8 PARKING LOT STALL MARKING (WHITE), SEE SHEET 16
	9 LANE ARROW (WHITE), SEE SHEET 16
	10 CENTERLINE, SOLID, DOUBLE (YELLOW), SEE SHEET 16
	11 CROSSWALK LINE (WHITE), SEE SHEET 16



VILLAGE OF HARTVILLE
2026 PAVING PROGRAM

STARK COUNTY

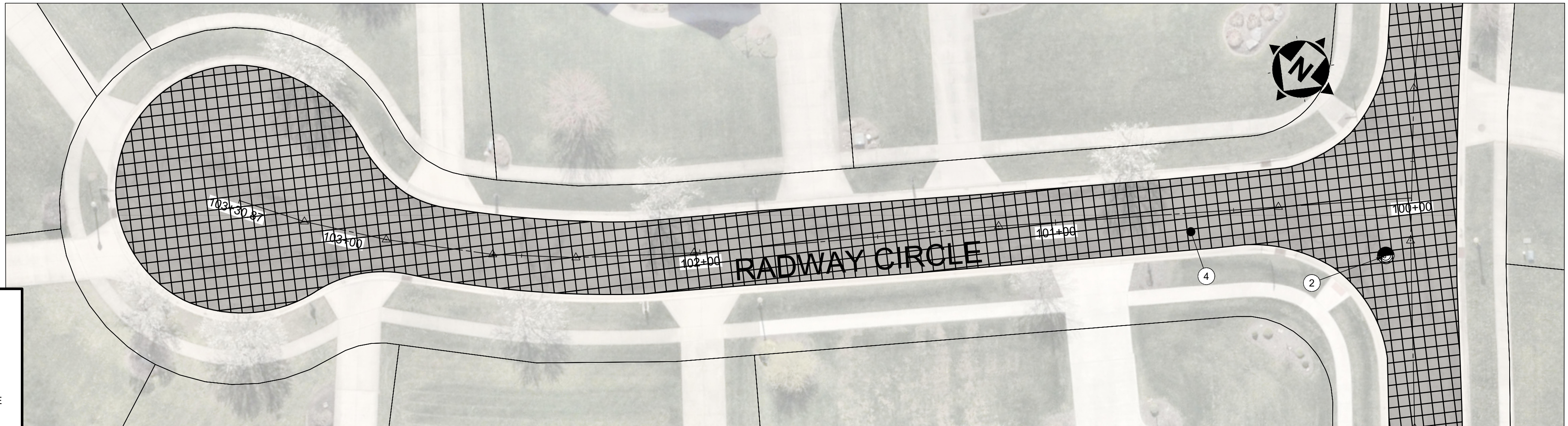
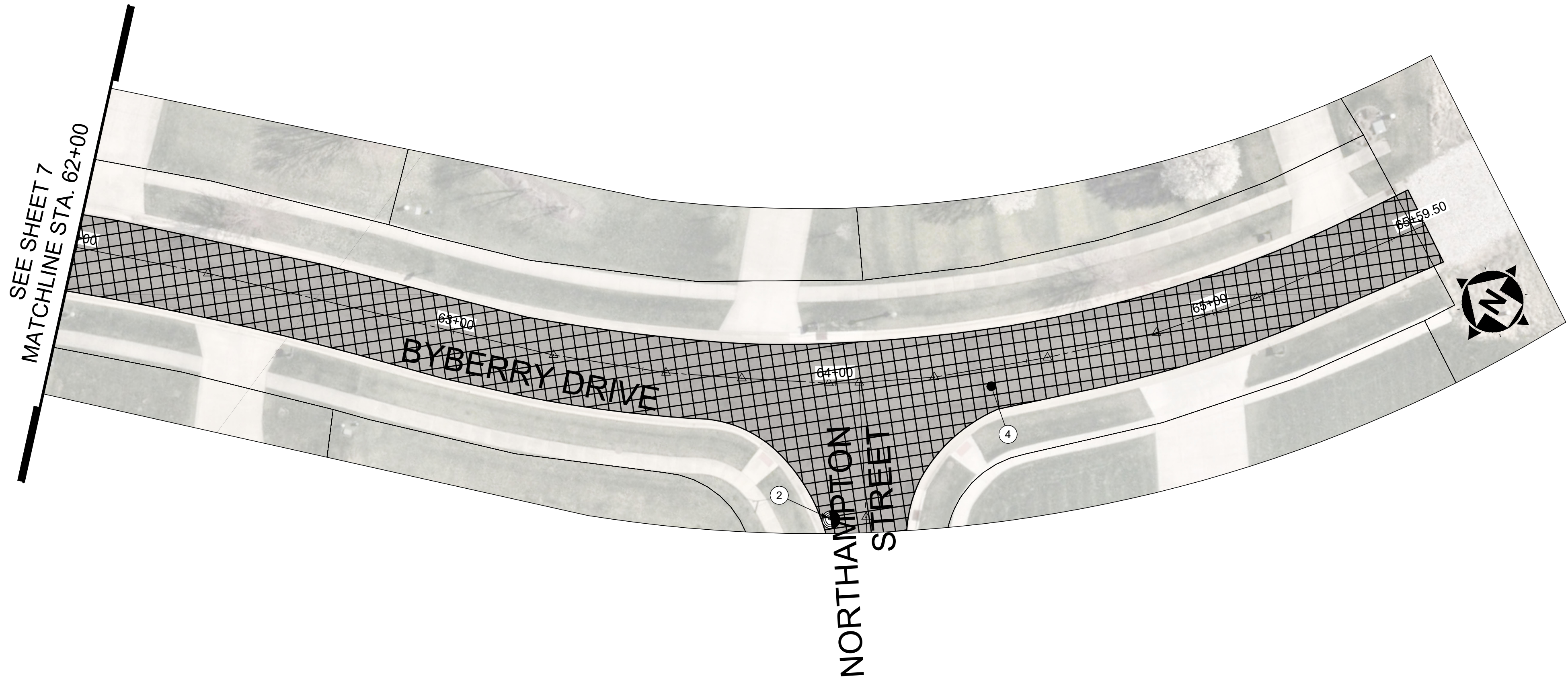
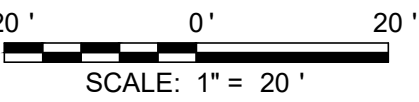
VILLAGE OF HARTVILLE, OHIO

ISSUED FOR:	BIDDING
ISSUE DATE:	2/12/2026
SCALE:	AS NOTED
DESIGNED BY:	JCR
DRAWN BY:	JCR
CHECKED BY:	SAA

PLAN VIEW
BYBERRY AVE
STA 50+00 TO 62+00

PROJECT NO.	
41933	
DISCIPLINE	
CIVIL	
SHEET NAME	
PLAN - 3	
SHEET	OF
7	16

NORTH ARROW SHOWN ON
EACH VIEWPORT



LAYOUT CODED NOTES

- 1 EXISTING CATCH BASIN, ADJUST TO GRADE
SEE SHEET 16
- 2 EXISTING MANHOLE, ADJUST TO GRADE
SEE SHEET 16
- 3 MILL & FILL, SEE TYPICAL SECTION ON SHEET 3
- 4 PAVEMENT REPAIR, APPROXIMATE LOCATION, TO BE
FIELD DETERMINED, SEE DETAIL ON SHEET 16
- 5 STOP LINE (WHITE), SEE SHEET 16
- 6 HANDICAP SYMBOL MARKING (BLUE), SEE SHEET 16
- 7 HANDICAP PARKING STALL (BLUE), SEE SHEET 16
- 8 PARKING LOT STALL MARKING (WHITE), SEE SHEET 16
- 9 LANE ARROW (WHITE), SEE SHEET 16
- 10 CENTERLINE, SOLID, DOUBLE (YELLOW), SEE SHEET 16
- 11 CROSSWALK LINE (WHITE), SEE SHEET 16

LAYOUT NOTES

- SUBGRADE REPAIR LOCATION WILL BE FIELD
DETERMINED DURING CONSTRUCTION. SEE SUBGRADE
REPAIR DETAIL ON DETAIL SHEET 16.

verdantas

NO	REVISION	DATE

VILLAGE OF HARTVILLE
2026 PAVING PROGRAM

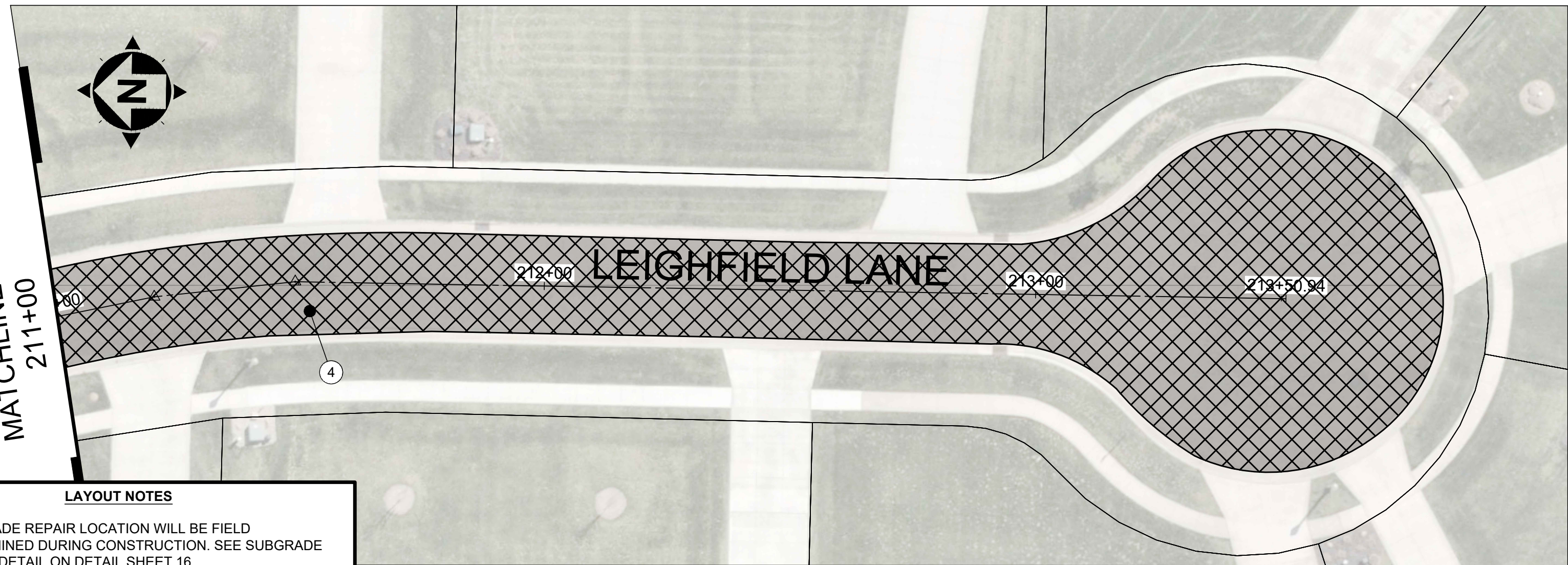
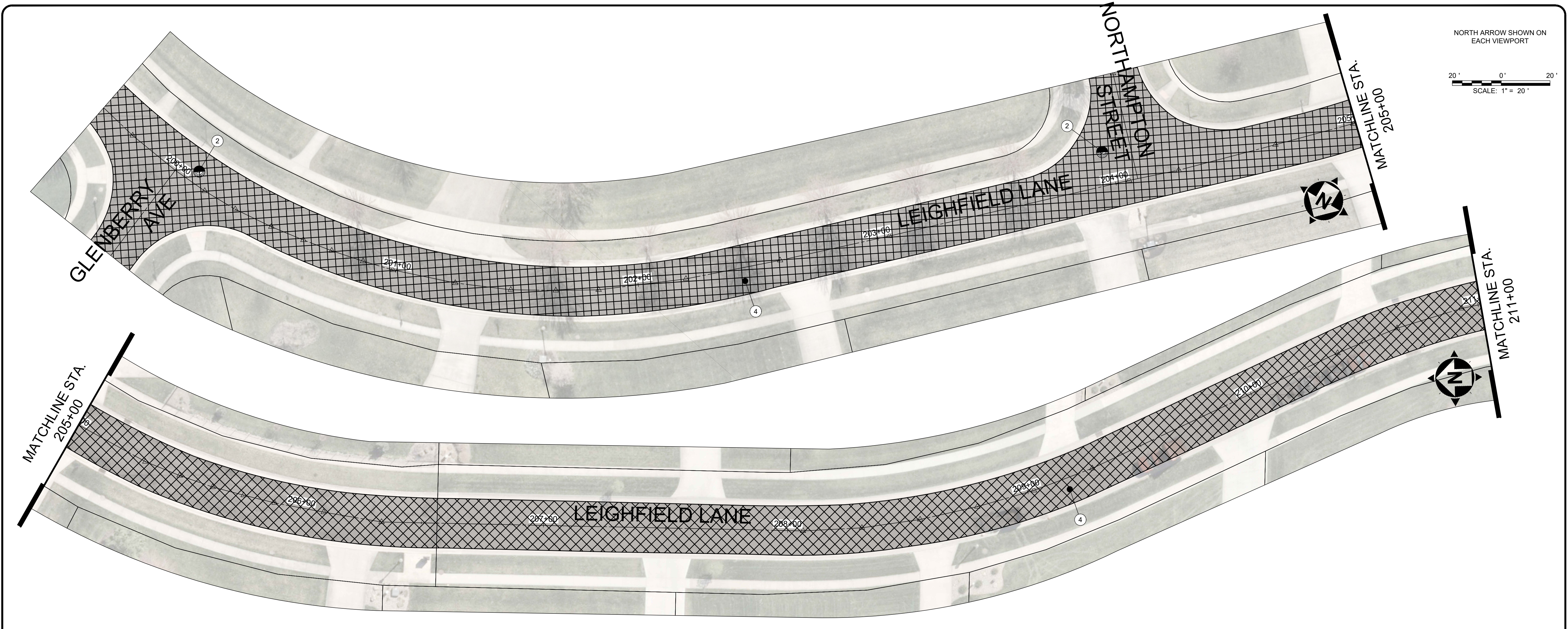
STARK COUNTY

VILLAGE OF HARTVILLE, OHIO

ISSUED FOR:	BIDDING
ISSUE DATE:	2/12/2026
SCALE:	AS NOTED
DESIGNED BY:	JCR
DRAWN BY:	JCR
CHECKED BY:	SAA

PLAN VIEW
BYBERRY AVE STA 62+00 TO 65+59
& RADWAY CIRCLE

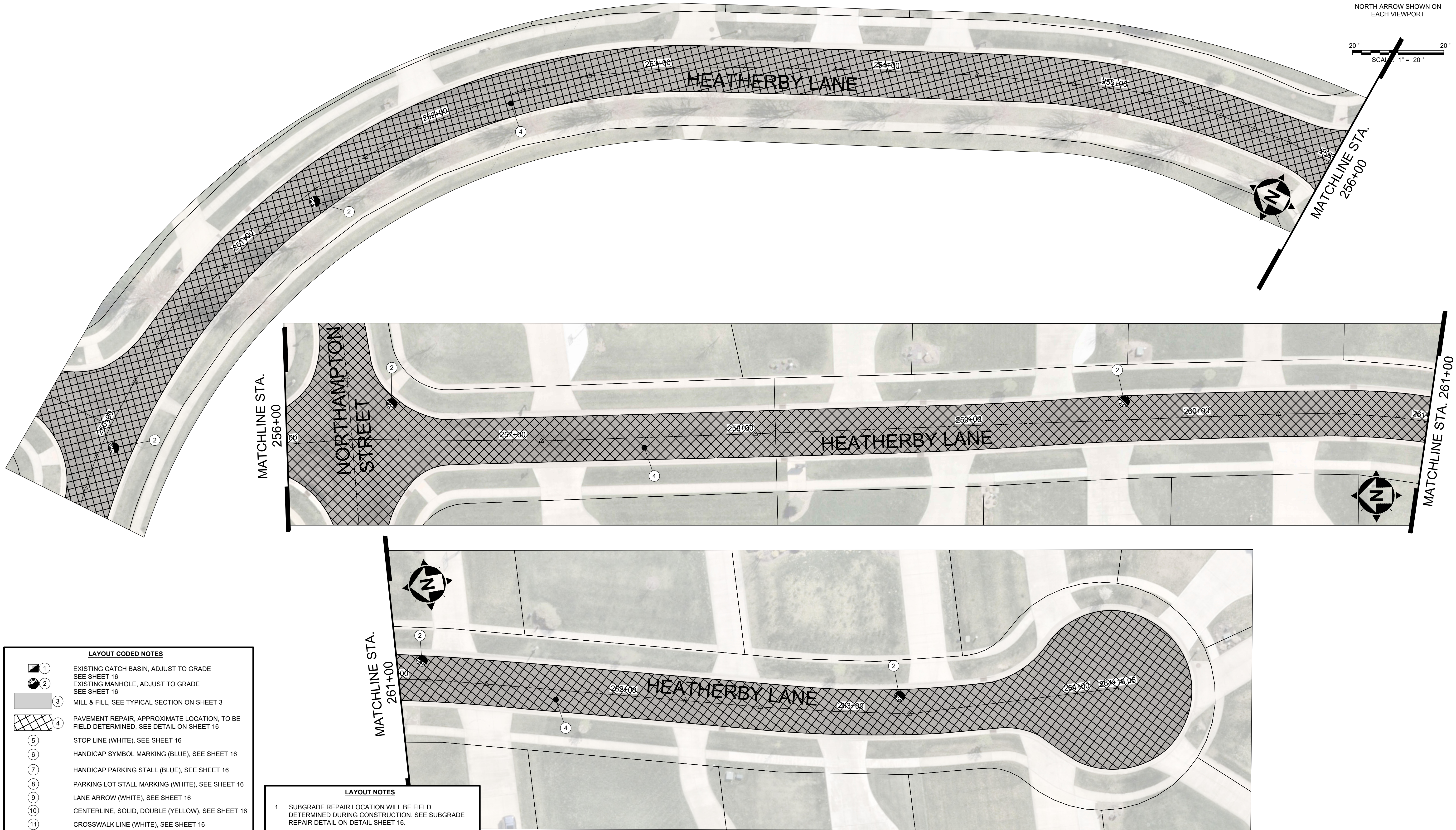
PROJECT NO.	
41933	
DISCIPLINE	
CIVIL	
SHEET NAME	
PLAN - 4	
SHEET	OF
8	16



LAYOUT CODED NOTES	
	1. EXISTING CATCH BASIN, ADJUST TO GRADE SEE SHEET 16
	2. EXISTING MANHOLE, ADJUST TO GRADE SEE SHEET 16
	3. MILL & FILL, SEE TYPICAL SECTION ON SHEET 3
	4. PAVEMENT REPAIR, APPROXIMATE LOCATION, TO BE FIELD DETERMINED, SEE DETAIL ON SHEET 16
	5. STOP LINE (WHITE), SEE SHEET 16
	6. HANDICAP SYMBOL MARKING (BLUE), SEE SHEET 16
	7. HANDICAP PARKING STALL (BLUE), SEE SHEET 16
	8. PARKING LOT STALL MARKING (WHITE), SEE SHEET 16
	9. LANE ARROW (WHITE), SEE SHEET 16
	10. CENTERLINE, SOLID, DOUBLE (YELLOW), SEE SHEET 16
	11. CROSSWALK LINE (WHITE), SEE SHEET 16

LAYOUT NOTES	
1.	SUBGRADE REPAIR LOCATION WILL BE FIELD DETERMINED DURING CONSTRUCTION. SEE SUBGRADE REPAIR DETAIL ON DETAIL SHEET 16.

	<table><tr><th>NO</th><th>REVISION</th><th>DATE</th></tr><tr><td> </td><td> </td><td> </td></tr><tr><td> </td><td> </td><td> </td></tr><tr><td> </td><td> </td><td> </td></tr><tr><td> </td><td> </td><td> </td></tr></table>	NO	REVISION	DATE													<p>VILLAGE OF HARTVILLE 2026 PAVING PROGRAM</p> <p>STARK COUNTY VILLAGE OF HARTVILLE, OHIO</p>	<table><tr><td>ISSUED FOR:</td><td>BIDDING</td></tr><tr><td>ISSUE DATE:</td><td>2/12/2026</td></tr><tr><td>SCALE:</td><td>AS NOTED</td></tr><tr><td>DESIGNED BY:</td><td>JCR</td></tr><tr><td>DRAWN BY:</td><td>JCR</td></tr><tr><td>CHECKED BY:</td><td>SAA</td></tr></table>	ISSUED FOR:	BIDDING	ISSUE DATE:	2/12/2026	SCALE:	AS NOTED	DESIGNED BY:	JCR	DRAWN BY:	JCR	CHECKED BY:	SAA	<p>PLAN VIEW LEIGHFIELD LANE STA 200+00 TO 213+50</p>	<table><tr><td colspan="2">PROJECT NO.</td></tr><tr><td colspan="2">41933</td></tr><tr><td colspan="2">DISCIPLINE</td></tr><tr><td colspan="2">CIVIL</td></tr><tr><td colspan="2">SHEET NAME</td></tr><tr><td colspan="2">PLAN - 5</td></tr><tr><td>SHEET</td><td>OF</td></tr><tr><td>9</td><td>16</td></tr></table>	PROJECT NO.		41933		DISCIPLINE		CIVIL		SHEET NAME		PLAN - 5		SHEET	OF	9	16
		NO	REVISION	DATE																																												
ISSUED FOR:	BIDDING																																															
ISSUE DATE:	2/12/2026																																															
SCALE:	AS NOTED																																															
DESIGNED BY:	JCR																																															
DRAWN BY:	JCR																																															
CHECKED BY:	SAA																																															
PROJECT NO.																																																
41933																																																
DISCIPLINE																																																
CIVIL																																																
SHEET NAME																																																
PLAN - 5																																																
SHEET	OF																																															
9	16																																															



LAYOUT CODED NOTES

1

2

3

4

5

6

7

8

9

10

11

EXISTING CATCH BASIN, ADJUST TO GRADE
SEE SHEET 16

EXISTING MANHOLE, ADJUST TO GRADE
SEE SHEET 16

MILL & FILL, SEE TYPICAL SECTION ON SHEET 3

PAVEMENT REPAIR, APPROXIMATE LOCATION, TO BE
FIELD DETERMINED, SEE DETAIL ON SHEET 16

STOP LINE (WHITE), SEE SHEET 16

HANDICAP SYMBOL MARKING (BLUE), SEE SHEET 16

HANDICAP PARKING STALL (BLUE), SEE SHEET 16

PARKING LOT STALL MARKING (WHITE), SEE SHEET 16

LANE ARROW (WHITE), SEE SHEET 16

CENTERLINE, SOLID, DOUBLE (YELLOW), SEE SHEET 16

CROSSWALK LINE (WHITE), SEE SHEET 16

LAYOUT NOTES

1.

SUBGRADE REPAIR LOCATION WILL BE FIELD
DETERMINED DURING CONSTRUCTION. SEE SUBGRADE
REPAIR DETAIL ON DETAIL SHEET 16.

<div><div></div><div>verdantas</div></div>	<table><tr><th>NO</th><th>REVISION</th><th>DATE</th></tr><tr><td> </td><td> </td><td> </td></tr><tr><td> </td><td> </td><td> </td></tr><tr><td> </td><td> </td><td> </td></tr><tr><td> </td><td> </td><td> </td></tr></table>	NO	REVISION	DATE													<div>VILLAGE OF HARTVILLE</div> <div>2026 PAVING PROGRAM</div> <div>STARK COUNTY</div> <div>VILLAGE OF HARTVILLE, OHIO</div>	<table><tr><td>ISSUED FOR:</td><td>BIDDING</td></tr><tr><td>ISSUE DATE:</td><td>2/12/2026</td></tr><tr><td>SCALE:</td><td>AS NOTED</td></tr><tr><td>DESIGNED BY:</td><td>JCR</td></tr><tr><td>DRAWN BY:</td><td>JCR</td></tr><tr><td>CHECKED BY:</td><td>SAA</td></tr></table>	ISSUED FOR:	BIDDING	ISSUE DATE:	2/12/2026	SCALE:	AS NOTED	DESIGNED BY:	JCR	DRAWN BY:	JCR	CHECKED BY:	SAA	<div>PLAN VIEW</div> <div>HEATHERBY LANE</div> <div>STA 250+00 TO 264+18</div>	<table><tr><td colspan="2">PROJECT NO.</td></tr><tr><td colspan="2">41933</td></tr><tr><td colspan="2">DISCIPLINE</td></tr><tr><td colspan="2">CIVIL</td></tr><tr><td colspan="2">SHEET NAME</td></tr><tr><td colspan="2">PLAN - 6</td></tr><tr><td>SHEET</td><td>OF</td></tr><tr><td>10</td><td>16</td></tr></table>	PROJECT NO.		41933		DISCIPLINE		CIVIL		SHEET NAME		PLAN - 6		SHEET	OF	10	16
NO	REVISION	DATE																																														
ISSUED FOR:	BIDDING																																															
ISSUE DATE:	2/12/2026																																															
SCALE:	AS NOTED																																															
DESIGNED BY:	JCR																																															
DRAWN BY:	JCR																																															
CHECKED BY:	SAA																																															
PROJECT NO.																																																
41933																																																
DISCIPLINE																																																
CIVIL																																																
SHEET NAME																																																
PLAN - 6																																																
SHEET	OF																																															
10	16																																															

Z:\PROJECT FILES\GA+H\HARTVILLE\1933 - HARTVILLE 2026 PAVING PROGRAM\DWG\SHEETS\41933 - SHEETS.DWG - PLAN - 6 - 2/11/2026 9:03:38 AM - JOSH ROHRBACH

LAYOUT CODED NOTES

1

EXISTING CATCH BASIN, ADJUST TO GRADE
SEE SHEET 16

2

EXISTING MANHOLE, ADJUST TO GRADE
SEE SHEET 16

3

MILL & FILL, SEE TYPICAL SECTION ON SHEET 3

4

PAVEMENT REPAIR, APPROXIMATE LOCATION, TO BE
FIELD DETERMINED, SEE DETAIL ON SHEET 16

5

STOP LINE (WHITE), SEE SHEET 16

6

HANDICAP SYMBOL MARKING (BLUE), SEE SHEET 16

7

HANDICAP PARKING STALL (BLUE), SEE SHEET 16

8

PARKING LOT STALL MARKING (WHITE), SEE SHEET 16

9

LANE ARROW (WHITE), SEE SHEET 16

10

CENTERLINE, SOLID, DOUBLE (YELLOW), SEE SHEET 16

11

CROSSWALK LINE (WHITE), SEE SHEET 16

LAYOUT NOTES

1.

SUBGRADE REPAIR LOCATION WILL BE FIELD
DETERMINED DURING CONSTRUCTION. SEE SUBGRADE
REPAIR DETAIL ON DETAIL SHEET 16.

NORTH ARROW SHOWN ON
EACH VIEWPORT

20'

0'

20'

SCALE: 1" = 20'

verdantas

NO	REVISION	DATE

VILLAGE OF HARTVILLE
2026 PAVING PROGRAM

STARK COUNTY

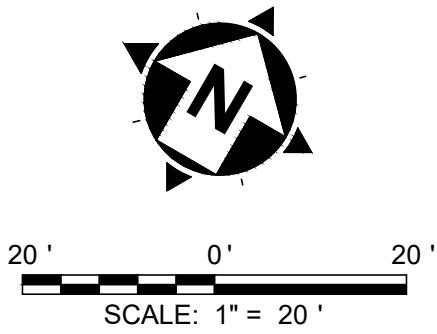
VILLAGE OF HARTVILLE, OHIO

ISSUED FOR:	BIDDING
ISSUE DATE:	2/12/2026
SCALE:	AS NOTED
DESIGNED BY:	JCR
DRAWN BY:	JCR
CHECKED BY:	SAA

PLAN VIEW
NORTHAMPTON STREET
STA 300+00 TO 309+00

PROJECT NO. 41933	
DISCIPLINE CIVIL	
SHEET NAME PLAN - 7	
SHEET 11	OF 16

Z:\PROJECT FILES\GA+H\HARTVILLE\1933 - HARTVILLE 2026 PAVING PROGRAM\DWG\SHEETS\1933 - SHEETS.DWG - PLAN - 7 - 2/11/2026 9:03:38 AM - JOSH ROHRBACH



LAYOUT CODED NOTES

- 1

EXISTING CATCH BASIN, ADJUST TO GRADE
SEE SHEET 16
- 2

EXISTING MANHOLE, ADJUST TO GRADE
SEE SHEET 16
- 3

MILL & FILL, SEE TYPICAL SECTION ON SHEET 3
- 4

PAVEMENT REPAIR, APPROXIMATE LOCATION, TO BE
FIELD DETERMINED, SEE DETAIL ON SHEET 16
- 5

STOP LINE (WHITE), SEE SHEET 16
- 6

HANDICAP SYMBOL MARKING (BLUE), SEE SHEET 16
- 7

HANDICAP PARKING STALL (BLUE), SEE SHEET 16
- 8

PARKING LOT STALL MARKING (WHITE), SEE SHEET 16
- 9

LANE ARROW (WHITE), SEE SHEET 16
- 10

CENTERLINE, SOLID, DOUBLE (YELLOW), SEE SHEET 16
- 11

CROSSWALK LINE (WHITE), SEE SHEET 16

LAYOUT NOTES

1. SUBGRADE REPAIR LOCATION WILL BE FIELD
DETERMINED DURING CONSTRUCTION. SEE SUBGRADE
REPAIR DETAIL ON DETAIL SHEET 16.

verdantas

VILLAGE OF HARTVILLE
2026 PAVING PROGRAM

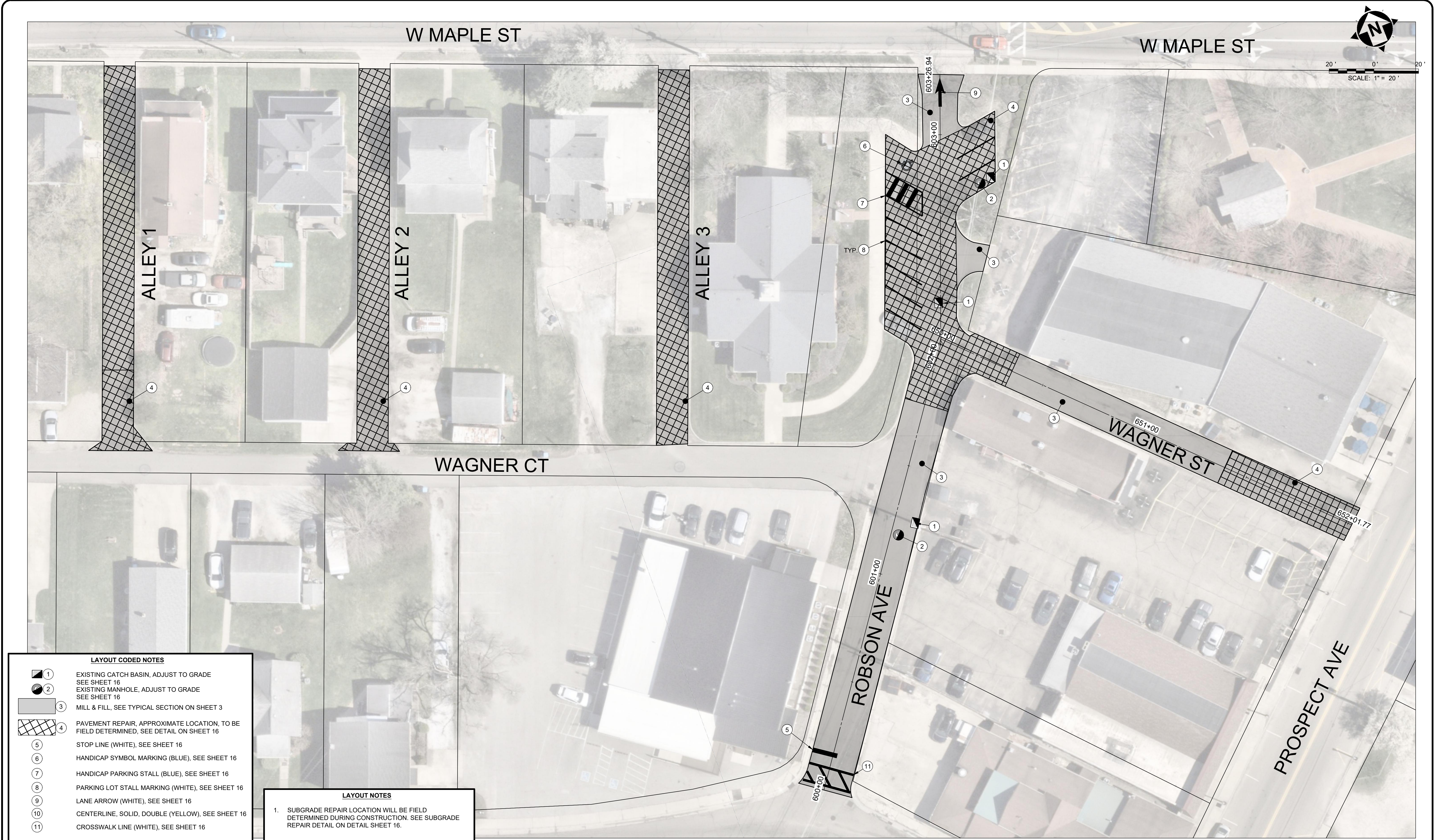
STARK COUNTY

VILLAGE OF HARTVILLE, OHIO

ISSUED FOR:	BIDDING
ISSUE DATE:	2/12/2026
SCALE:	AS NOTED
DESIGNED BY:	JCR
DRAWN BY:	JCR
CHECKED BY:	SAA

PLAN VIEW
NORTHAMPTON STREET
STA 309+00 TO 311+92

PROJECT NO.	
41933	
DISCIPLINE	
CIVIL	
SHEET NAME	
PLAN - 8	
SHEET	OF
12	16



LAYOUT CODED NOTES

1

2

3

4

5

6

7

8

9

10

11

EXISTING CATCH BASIN, ADJUST TO GRADE
SEE SHEET 16

EXISTING MANHOLE, ADJUST TO GRADE
SEE SHEET 16

MILL & FILL, SEE TYPICAL SECTION ON SHEET 3

PAVEMENT REPAIR, APPROXIMATE LOCATION, TO BE
FIELD DETERMINED, SEE DETAIL ON SHEET 16

STOP LINE (WHITE), SEE SHEET 16

HANDICAP SYMBOL MARKING (BLUE), SEE SHEET 16

HANDICAP PARKING STALL (BLUE), SEE SHEET 16

PARKING LOT STALL MARKING (WHITE), SEE SHEET 16

LANE ARROW (WHITE), SEE SHEET 16

CENTERLINE, SOLID, DOUBLE (YELLOW), SEE SHEET 16

CROSSWALK LINE (WHITE), SEE SHEET 16

LAYOUT NOTES

1.

SUBGRADE REPAIR LOCATION WILL BE FIELD
DETERMINED DURING CONSTRUCTION. SEE SUBGRADE
REPAIR DETAIL ON DETAIL SHEET 16.

verdantas

NO	REVISION	DATE

VILLAGE OF HARTVILLE
2026 PAVING PROGRAM

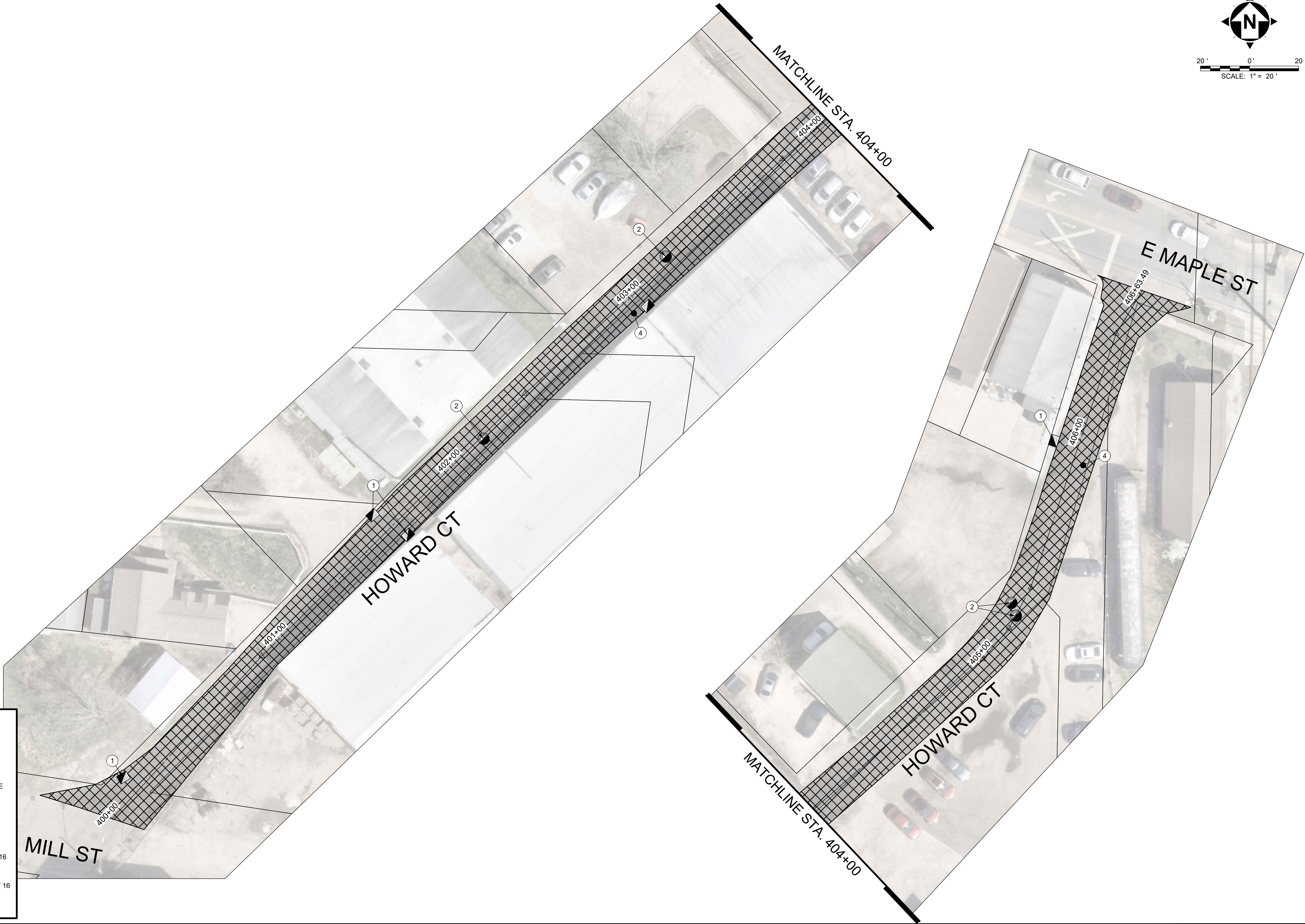
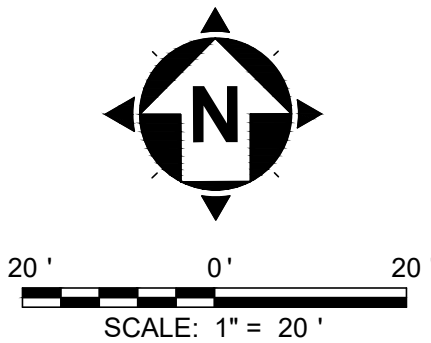
STARK COUNTY

VILLAGE OF HARTVILLE, OHIO

ISSUED FOR:	BIDDING
ISSUE DATE:	2/12/2026
SCALE:	AS NOTED
DESIGNED BY:	JCR
DRAWN BY:	JCR
CHECKED BY:	SAA

PLAN VIEW
ALLEYS 1, 2, 3
ROBSON AVE
WAGNER ST

PROJECT NO. 41933	
DISCIPLINE CIVIL	
SHEET NAME PLAN - 9	
SHEET 13	OF 16



LAYOUT NOTES

1. SUBGRADE REPAIR LOCATION WILL BE FIELD DETERMINED DURING CONSTRUCTION. SEE SUBGRADE REPAIR DETAIL ON DETAIL SHEET 16.

LAYOUT CODED NOTES

- 1 EXISTING CATCH BASIN, ADJUST TO GRADE
SEE SHEET 16
- 2 EXISTING MANHOLE, ADJUST TO GRADE
SEE SHEET 16
- 3 MILL & FILL, SEE TYPICAL SECTION ON SHEET 3
- 4 PAVEMENT REPAIR, APPROXIMATE LOCATION, TO BE FIELD DETERMINED, SEE DETAIL ON SHEET 16
- 5 STOP LINE (WHITE), SEE SHEET 16
- 6 HANDICAP SYMBOL MARKING (BLUE), SEE SHEET 16
- 7 HANDICAP PARKING STALL (BLUE), SEE SHEET 16
- 8 PARKING LOT STALL MARKING (WHITE), SEE SHEET 16
- 9 LANE ARROW (WHITE), SEE SHEET 16
- 10 CENTERLINE, SOLID, DOUBLE (YELLOW), SEE SHEET 16
- 11 CROSSWALK LINE (WHITE), SEE SHEET 16



NO	REVISION	DATE

VILLAGE OF HARTVILLE
2026 PAVING PROGRAM

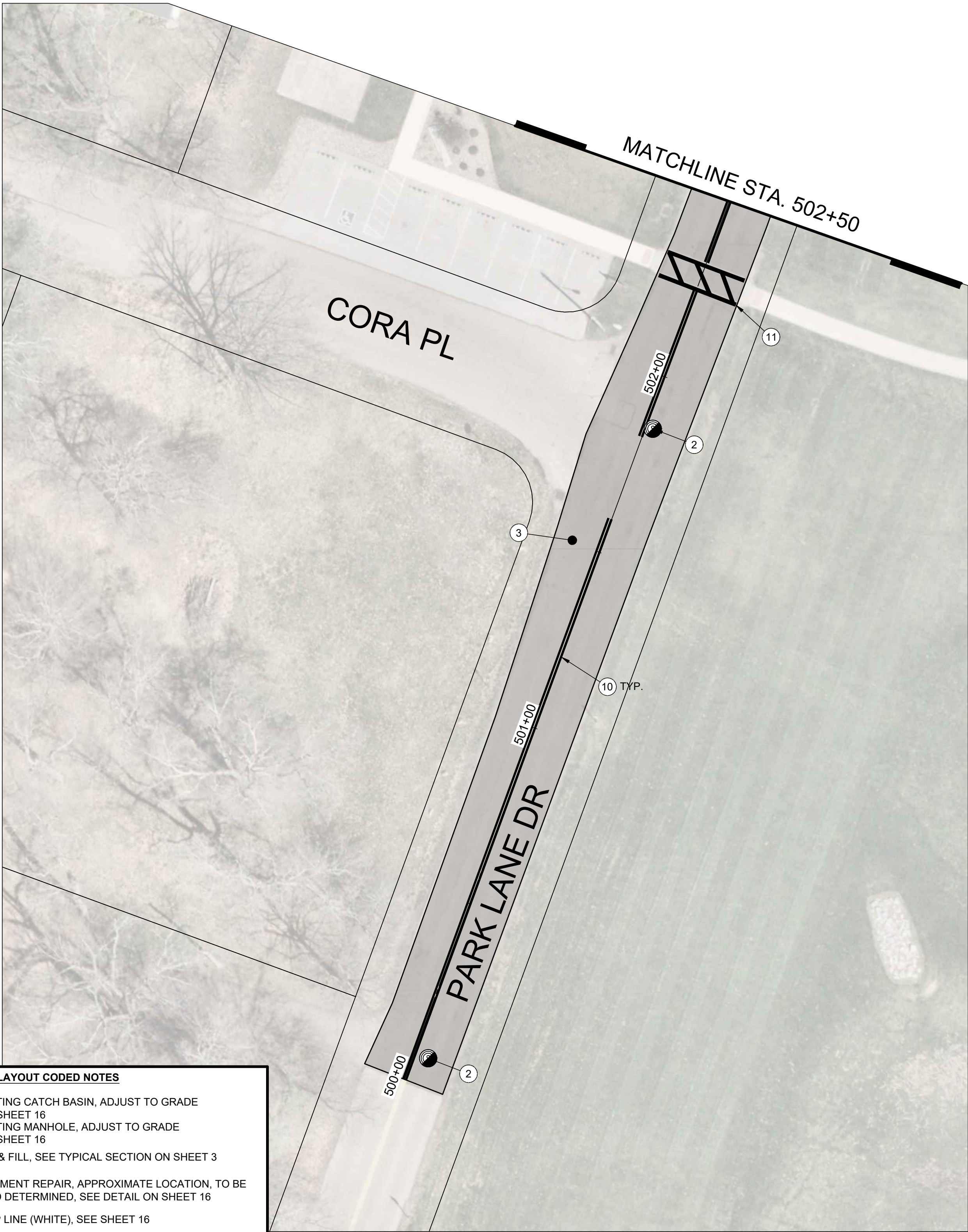
STARK COUNTY

VILLAGE OF HARTVILLE, OHIO

ISSUED FOR:	BIDDING
ISSUE DATE:	2/12/2026
SCALE:	AS NOTED
DESIGNED BY:	JCR
DRAWN BY:	JCR
CHECKED BY:	SAA

PLAN VIEW
HOWARD CT

PROJECT NO.	
41933	
DISCIPLINE	
CIVIL	
SHEET NAME	
PLAN - 10	
SHEET	OF
14	16



LAYOUT CODED NOTES

1

2

3

4

5

6

7

8

9

10

11

EXISTING CATCH BASIN, ADJUST TO GRADE
SEE SHEET 16

EXISTING MANHOLE, ADJUST TO GRADE
SEE SHEET 16

MILL & FILL, SEE TYPICAL SECTION ON SHEET 3

PAVEMENT REPAIR, APPROXIMATE LOCATION, TO BE
FIELD DETERMINED, SEE DETAIL ON SHEET 16

STOP LINE (WHITE), SEE SHEET 16

HANDICAP SYMBOL MARKING (BLUE), SEE SHEET 16

HANDICAP PARKING STALL (BLUE), SEE SHEET 16

PARKING LOT STALL MARKING (WHITE), SEE SHEET 16

LANE ARROW (WHITE), SEE SHEET 16

CENTERLINE, SOLID, DOUBLE (YELLOW), SEE SHEET 16

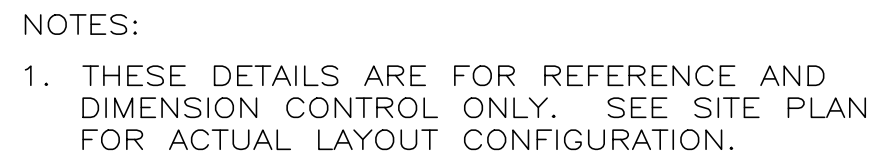
CROSSWALK LINE (WHITE), SEE SHEET 16

LAYOUT NOTES

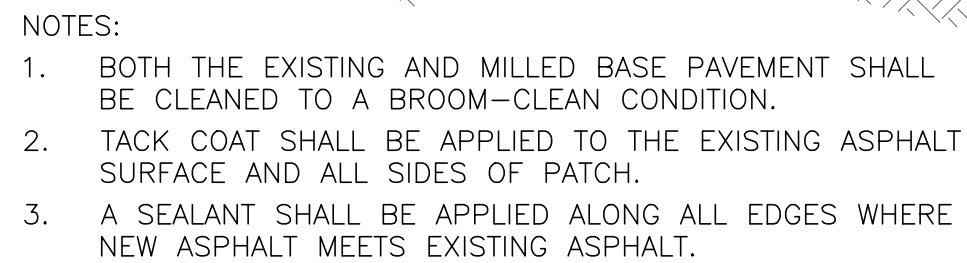
1.

SUBGRADE REPAIR LOCATION WILL BE FIELD
DETERMINED DURING CONSTRUCTION. SEE SUBGRADE
REPAIR DETAIL ON DETAIL SHEET 16.

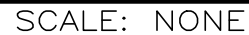
<div><div></div><div>verdantas</div></div>	NO	REVISION	DATE	<div>VILLAGE OF HARTVILLE</div> <div>2026 PAVING PROGRAM</div> <div>STARK COUNTY</div> <div>VILLAGE OF HARTVILLE, OHIO</div>	ISSUED FOR:	BIDDING	<div>PLAN VIEW</div> <div>PARK LANE DR</div>	PROJECT NO.	
					41933				
					DISCIPLINE				
					CIVIL				
					SHEET NAME				
					PLAN - 11				
					SHEET	OF	15	16	



SCALE: NONE



SCALE: NONE

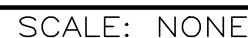


1. CENTER LINES TO BE YELLOW. ALL OTHER PAVEMENT MARKINGS TO BE WHITE UNLESS SPECIFIED OTHERWISE.

SCALE: NONE



SCALE: NONE



NOTES:

1. EXTEND EXPANSION JOINTS TO TOP OF CURB.
2. JOINT SEAL TO EXTEND THE FULL GUTTER WIDTH AND CURB FACE.
3. INSTALL 1" PREFORMED JOINT MATERIAL AND USE 5/8"Ø X 18" LONG DOWELS INTO COLD JOINTS BOTTOM WHERE NEW CURB MEETS EXISTING CURB OR AT EXPANSION JOINTS. EPOXY DOWEL BARS IN ACCORDANCE WITH ODOT 705.20.
4. PROVIDE BUTT JOINTS BETWEEN CURB AND GUTTER AND NEW OR EXISTING RIGID PAVEMENTS WITH TIE BARS OR HOOK BOLTS PROVIDED AT 5' INTERVALS.
5. PROVIDE CONTRACTION JOINTS AT 15' O.C.
6. APPLY LIQUID-MEMBRANE CURING COMPOUND (200 S.F./GAL.).
7. THIS DETAIL SHOWS ASPHALT PAVEMENT FOR REFERENCE ONLY. SEE SITE PLAN FOR ACTUAL TYPE OF PAVEMENT.

SCALE: NONE



1. A CONTINGENCY ITEM FOR ODOT ITEM 204 - EXCAVATION OF SUBGRADE MATERIAL AND EMBANKMENT WITH GRANULAR MATERIAL, AS PER PLAN, CONTINGENCY, AS DIRECTED AND ODOT ITEM 204 - GEOGRID, SHALL BE INCLUDED IN THE BID ITEMS AND BE PERFORMED ONLY UNDER WRITTEN DIRECTION OF THE DESIGN ENGINEER OR GEOTECHNICAL ENGINEER.
2. THE ACTUAL DEPTH OF UNDERCUT FOR EACH AREA SHALL BE AS DIRECTED BY THE DESIGN ENGINEER OR GEOTECHNICAL ENGINEER.
3. THE WORK LOCATION, DIMENSIONS AND QUANTITY FOR EACH AREA SHALL BE MEASURED AND DOCUMENTED ON THE CONSTRUCTION PLANS BY THE CONTRACTOR.

SCALE: NONE



1. REMOVE FRAME AND CASTING.
2. CLEAN SURFACES OF FRAME, CASTING AND PRECAST MANHOLE. REMOVE RUST, DEBRIS AND LOOSE MORTAR.
3. CLEAN SURFACES OF ADJUSTMENT RINGS OR BRICKS. REMOVE LOOSE BRICK AND MORTAR. IF EXCESSIVE BRICK DAMAGE, REPLACE WITH NEW ADJUSTMENT RINGS.
4. APPLY PRIMER AND SEALANT (I.E. FLEX-SEAL) TO MANHOLE ADJUSTMENT RINGS. THICKNESSES SHALL BE PER MANUFACTURER'S RECOMMENDATION. APPLY TO ENTIRE SURFACE OF ADJUSTMENT RINGS, AS WELL AS MANHOLE STRUCTURE AND CASTING AT LEAST 3" ABOVE AND BELOW ADJUSTMENT RINGS. ALLOW PRIMER TO CURE PRIOR TO APPLYING SEALANT.

SCALE: NONE



1. ASPHALT PAVEMENT TO BE REMOVED SHALL BE SAW CUT IN A NEAT AND STRAIGHT LINE AT THE LIMITS SHOWN ON THE PLANS OR AS FIELD MARKED BY THE ENGINEER. ADDITIONAL SAW CUTS MAY BE DESIRED TO FACILITATE REMOVAL, BUT THERE WILL BE NO EXTRA PAYMENT.
2. PAVEMENT SHALL BE REMOVED WITHOUT DAMAGING OR UNDERMINING THE PAVEMENT TO REMAIN. IF ADJACENT PAVEMENT IS DAMAGED, THE CONTRACTOR SHALL MAKE ADDITIONAL SAW CUTS, REMOVE THE DAMAGED AREAS AND REPAIR AS NECESSARY WITH NO ADDITIONAL COMPENSATION.
3. TACK COAT SHALL BE APPLIED TO THE EXPOSED EX. ASPHALT BASE COURSE AND ALL SIDES OF PATCH.
4. ODOT ITEM 705.04 JOINT SEALANT SHALL BE APPLIED AROUND THE EDGE OF PATCH.
5. DURING SUBGRADE COMPACTION, IF SOFT POCKETS ARE IDENTIFIED, SUBGRADE REPAIR SHOULD BE PERFORMED PER THE SUBGRADE REPAIR DETAIL.

SCALE: NONE