



To: All Plan Holders of Record

From: Verdantas LLC
For the Owner

Re: Addendum No. 1
JR Smith Park Improvements
City of Sunbury, OH

Date: December 8, 2025

This Addendum forms a part of the contract documents and modifies the original bidding documents dated November 2025 and all previous addenda, if any. Acknowledge receipt of this addendum in the space provided in the bid forms. Failure to do so may subject the bidder to disqualification.

QUESTIONS AND ANSWERS

Q1. Question about the N.I.C. Items on one of the pages. See attached image. Have these already been purchased? Should we quote these or not? Submit a secondary quote for them? Please advise the best course of action.

A1. Items noted as N.I.C. are for reference only, are not listed on the bid tab and are not to be included in any bid pricing.

Q2. Are they accepting equals for the site furnishings, splash pad, and playground?

A2. Vendors may submit or equal products for review and approval. Please refer to Specification Section 012513 – Product Substitution Procedures.

Q3. Would the City be open to extending the completion date into later summer?

A3. There's of course a huge desire to have the splash pad and park area useable next year, but the City understands that the schedule will need to be discussed in detail with the contractor awarded the project and the start date could push the completion back. Weather delays are also permitted and we would expect any major winter delays to be communicated at the time of the inclement event. The selected contractor shall provide an official construction schedule.

Q4. Do you have specifications for the retaining wall material?

A4. Refer to wall detail sheet 26, the precast concrete block product shall be approximately 6 in H x 9 in D x 18 in L rough faced block in a standard color. The proposed product shall be included in the submittal process.

Q5. What is the required invert elevation for the sanitary tie-in shown on Sheet C-12?

A5. 960.00'

Q6. What size water main is to be tapped for the water service?

A6. 6"

Q7. The quantity of stockpile topsoil is roughly double the respread quantity. Should bidders plan to leave excess material onsite, or should export be included? If export is required, will it be paid under a separate item?

A7. Excess topsoil shall be removed from the site. Refer to the enclosed Bid Form BF.9A, Ref. No. 42 - Topsoil Removed, As Per Plan.

Q8. There does not appear to be any 8" reinforced concrete pavement included in this project.

A8. Ref. No. 16 on the enclosed Bid Form BF.8A has been changed to 8 Inch Non-Reinforced Concrete Pavement, As Per Plan, per City details on sheet 22.

Q9. 9. Sheet A102, I noticed that the restrooms are shown with a gypsum ceiling; however, the drawings do not indicate the required type or thickness.

A9. Refer to new Specification Section 092900 Gypsum Board

Q10. Reaching out for information on details for pole base specs for fixture P1 and P2

A10. Refer to the enclosed Revised plan sheet E100 for light pole footer detail.

Q11. Site Furnishing - Bench Swing ?

A11. Refer to the enclosed revised Bid Form BF.10A, Ref. No. 51 - Special - Bench Swing.

Q12 Can you confirm if the Contractor is to provide the 3" water meter? If so, can you provide specifications for such?

A12 Water meter to be purchased from local water authority and installed by contractor.

Q12 Can you provide specs for the UR-01, HB-1, FD-1, FCO & WCO in the building plans?

A12 Refer to the enclosed Revised plan sheets P101 and P201.

BID FORMS

Replace Bid Form, Pages BF.8 to BF.10, with the enclosed Bid Form, Pages BF.8A to BF.10A.

SPECIFICATIONS

Add Specification Section 092900 GYPSUM BOARD with the enclosed.

Addendum No. 1
Date: December 8, 2025
Page 3

PLANS

Replace plan sheets E100, P101 and P201 with the enclosed Revised per Addendum 1 plan E100, P101 and P201.

RW:mep

Enclosures

Z:\Project Files\SA-TZ\Sunburycty\41545 - Sunbury-JR Smith Park Improvements\Working\Bid Documents\Addenda\Addendum 01\Addendum 01.Doc

Proposal to City of Sunbury
For JR Smith Park Improvements
Base Bid - Site Improvements
Project No. 0000041545

REF. NO.	DESCRIPTION	QTY.	MEASURE UNITS	UNIT PRICE LABOR	UNIT PRICE MATERIAL	TOTAL UNIT PRICE	ITEM TOTAL
1	(SPC) BONDS AND INSURANCES, AS PER PLAN	1.00	LS	\$	\$	\$	\$
2	(200) EARTHWORK	1.00	UNIT	\$	\$	\$	\$
3	(201) CLEARING AND GRUBBING, AS PER PLAN	1.00	LS	\$	\$	\$	\$
4	(202) STRUCTURE REMOVED, AS PER PLAN	1.00	LS	\$	\$	\$	\$
5	(202) EXCAVATION AND REMOVAL OF EXISTING PAVEMENT, CURB, & BASE, AS PER PLAN	1.00	LS	\$	\$	\$	\$
6	(202) STORM SEWER ABANDONED, REMOVED AND/OR GROUTED, AS PER PLAN	1,159.00	FT	\$	\$	\$	\$
7	(202) REMOVAL MISC.: MISC. SITE ITEMS, AS PER PLAN	1.00	LS	\$	\$	\$	\$
8	(SPC) SPECIAL - BIORETENTION CELL, AS PER PLAN	2.00	EACH	\$	\$	\$	\$
9	(204) SUBGRADE COMPACTION, AS PER PLAN	6,782.00	SY	\$	\$	\$	\$
10	(204) PROOF ROLLING, AS PER PLAN	2.00	HOURL	\$	\$	\$	\$
11	(254) PAVEMENT PLANING, ASPHALT CONCRETE, AS PER PLAN	667.00	SY	\$	\$	\$	\$
12	(304) AGGREGATE BASE, AS PER PLAN	1,405.00	CY	\$	\$	\$	\$
13	(407) TACK COAT, AS PER PLAN	200.00	GAL	\$	\$	\$	\$
14	(448) ASPHALT CONCRETE INTERMEDIATE COURSE, TYPE 2, PG64-22, AS PER PLAN	405.00	CY	\$	\$	\$	\$
15	(448) ASPHALT CONCRETE SURFACE COURSE, TYPE 1, PG64-22, AS PER PLAN	238.00	CY	\$	\$	\$	\$
16	(452) 8 INCH NON-REINFORCED CONCRETE PAVEMENT, AS PER PLAN	101.00	SY	\$	\$	\$	\$
17	(601) ROCK CHANNEL PROTECTION, TYPE C WITH FILTER, AS PER PLAN	10.00	CY	\$	\$	\$	\$
18	(602) MASONRY, MISC.: BLOCK MASONRY WALL WITH BRICK VENEER, AS PER PLAN	1.00	LS	\$	\$	\$	\$
19	(605) 4 INCH SHALLOW PIPE UNDERDRAIN WITH GEOTEXTILE FABRIC, AS PER PLAN	1,160.00	FT	\$	\$	\$	\$
20	(608) 4 INCH CONCRETE WALK, AS PER PLAN	13,164.00	SF	\$	\$	\$	\$
21	(608) 4 INCH COLORED, IMPRINTED, AND TEXTURED CONCRETE PAVING, AS PER PLAN	1,240.00	SF	\$	\$	\$	\$

Proposal to City of Sunbury
For JR Smith Park Improvements
Base Bid - Site Improvements
Project No. 0000041545

REF. NO.	DESCRIPTION	QTY.	MEASURE UNITS	UNIT PRICE LABOR	UNIT PRICE MATERIAL	TOTAL UNIT PRICE	ITEM TOTAL
22	(609) CURB, TYPE 6, AS PER PLAN	1,494.00	FT	\$	\$	\$	\$
23	(SPC) CURB, MISC.: FLUSH CURB, AS PER PLAN	330.00	FT	\$	\$	\$	\$
24	(610) SPECIAL - RETAINING WALL, MISC.: SEGMENTAL CONCRETE UNIT (MANUFACTURED BLOCK) RETAINING WALL	55.00	SF	\$	\$	\$	\$
25	(611) SANITARY SEWER CONNECTION, RESTROOM, AS PER PLAN	1.00	LS	\$	\$	\$	\$
26	(611) 12" CONDUIT, TYPE B, AS PER PLAN	1,151.00	FT	\$	\$	\$	\$
27	(611) 18" CONDUIT, TYPE B, AS PER PLAN	100.00	FT	\$	\$	\$	\$
28	(611) 24" CONDUIT, TYPE B, AS PER PLAN	184.00	FT	\$	\$	\$	\$
29	(611) CATCH BASIN, NO. 2-2B, AS PER PLAN	4.00	EACH	\$	\$	\$	\$
30	(611) CATCH BASIN, NO. 2-3, AS PER PLAN	2.00	EACH	\$	\$	\$	\$
31	(611) CATCH BASIN, AS PER PLAN	4.00	EACH	\$	\$	\$	\$
32	(611) CATCH BASIN ADJUSTED TO GRADE, AS PER PLAN	4.00	EACH	\$	\$	\$	\$
33	(611) INLET, YARD DRAIN, AS PER PLAN	9.00	EACH	\$	\$	\$	\$
34	(614) MAINTAINING TRAFFIC, AS PER PLAN	1.00	LS	\$	\$	\$	\$
35	(623) CONSTRUCTION LAYOUT STAKES AND SURVEYING, AS PER PLAN	1.00	LS	\$	\$	\$	\$
36	(624) MOBILIZATION, AS PER PLAN	1.00	LS	\$	\$	\$	\$
37	(625) LIGHTING, MISC., AS PER PLAN	1.00	LS	\$	\$	\$	\$
38	(630) SIGN, FLAT SHEET, WITH MOUNTING POST	4.00	EACH	\$	\$	\$	\$
39	(638) 3 INCH WATER MAIN WITH FITTINGS, POLYETHYLENE	234.00	FT	\$	\$	\$	\$
40	(642) TRAFFIC PAINT, AS PER PLAN	1.00	LS	\$	\$	\$	\$
41	(651) TOPSOIL STOCKPILED, AS PER PLAN	3,333.00	CY	\$	\$	\$	\$
42	(651) TOPSOIL REMOVED, AS PER PLAN	1,833.00	CY	\$	\$	\$	\$
43	(652) PLACING STOCKPILED TOPSOIL, AS PER PLAN	1,500.00	CY	\$	\$	\$	\$
44	(SPC) LAWN RESTORATION (GRADING, SEEDING, & MULCHING)	1.00	LS	\$	\$	\$	\$

Proposal to City of Sunbury
For JR Smith Park Improvements
Base Bid - Site Improvements
Project No. 0000041545

REF. NO.	DESCRIPTION	QTY.	MEASURE UNITS	UNIT PRICE LABOR	UNIT PRICE MATERIAL	TOTAL UNIT PRICE	ITEM TOTAL
45	(661) DECIDUOUS TREE, 2 INCH CALIPER	32.00	EACH	\$	\$	\$	\$
46	(661) EVERGREEN TREE, 6' HEIGHT, AS PER PLAN	6.00	EACH	\$	\$	\$	\$
47	(680) SPECIAL - SHELTER	1.00	EACH	\$	\$	\$	\$
48	(680) SPLASH PAD, AS PER PLAN	1.00	LS	\$	\$	\$	\$
49	(680) SPECIAL - TRASH RECEPTACLE	3.00	EACH	\$	\$	\$	\$
50	(680) SPECIAL - DOG WASTE STATION	2.00	EACH	\$	\$	\$	\$
51	(SPC) SPECIAL - BENCH SWING	2.00	EACH	\$	\$	\$	\$
52	(SPC) BASKETBALL COURTS, AS PER PLAN	1.00	LS	\$	\$	\$	\$
53	(680) METAL HANDRAIL, AS PER PLAN	150.00	FT	\$	\$	\$	\$
54	(SPC) TEMPORARY SEDIMENT AND EROSION CONTROL, AS PER PLAN	1.00	LS	\$	\$	\$	\$
55	(SPC) CONTINGENCY/DISCRETIONARY ALLOWANCE	1.00	LS	\$ -----	\$ -----	\$ 120,000.00	\$ 120,000.00
INFORMAL TOTAL BID				\$			

SECTION 092900 - GYPSUM BOARD

PART 1 - GENERAL

1.1 RELATED DOCUMENTS

- A. Drawings and general provisions of the Contract, including General and Supplementary Conditions and Division 01 Specification Sections, apply to this Section.

1.2 SUMMARY

- A. Section Includes:
 - 1. Interior gypsum board.

1.3 ACTION SUBMITTALS

- A. Product Data: For each type of product.

1.4 DELIVERY, STORAGE AND HANDLING

- A. Store materials inside under cover and keep them dry and protected against weather, condensation, direct sunlight, construction traffic, and other potential causes of damage. Stack panels flat and supported on risers on a flat platform to prevent sagging.

1.5 FIELD CONDITIONS

- A. Environmental Limitations: Comply with ASTM C 840 requirements or gypsum board manufacturer's written instructions, whichever are more stringent.
- B. Do not install paper-faced gypsum panels until installation areas are enclosed and conditioned.
- C. Do not install panels that are wet, moisture damaged, and mold damaged.
 - 1. Indications that panels are wet or moisture damaged include, but are not limited to, discoloration, sagging, or irregular shape.
 - 2. Indications that panels are mold damaged include, but are not limited to, fuzzy or splotchy surface contamination and discoloration.

PART 2 - PRODUCTS

2.1 GYPSUM BOARD, GENERAL

- A. Size: Provide maximum lengths and widths available that will minimize joints in each area and that correspond with support system indicated.

2.2 INTERIOR GYPSUM BOARD

- A. Gypsum Ceiling Board, Mold-Resistant: ASTM C 1396/C 1396M with moisture- and mold-resistant core and paper surfaces.
 - 1. Manufacturers: Subject to compliance with requirements, provide one of the following, or an approved equal from another manufacturer:
 - a. American Gypsum.
 - b. CertainTeed Corporation.
 - c. Continental Building Products, LLC.
 - d. Georgia-Pacific Gypsum LLC.
 - e. National Gypsum Company.
 - f. PABCO Gypsum.
 - g. USG Corporation.
 - 2. Thickness: 1/2 inch minimum.
 - 3. Long Edges: Tapered.

2.3 JOINT TREATMENT MATERIALS

- A. General: Comply with ASTM C 475/C 475M.
- B. Joint Tape:
 - 1. Interior Gypsum Board: Paper.
- C. Joint Compound for Interior Gypsum Board: For each coat, use formulation that is compatible with other compounds applied on previous or for successive coats.
 - 1. Prefilling: At open joints, rounded or beveled panel edges, and damaged surface areas, use setting-type taping compound.
 - 2. Embedding and First Coat: For embedding tape and first coat on joints, fasteners, and trim flanges, use setting-type taping or drying-type, all-purpose compound.
 - a. Use setting-type compound for installing paper-faced metal trim accessories.

3. Fill Coat: For second coat, use setting-type, sandable topping or drying-type, all-purpose compound.
4. Finish Coat: For third coat, use setting-type, sandable topping or drying-type, all-purpose compound.

2.4 AUXILIARY MATERIALS

- A. General: Provide auxiliary materials that comply with referenced installation standards and manufacturer's written instructions.
- B. Steel Drill Screws: ASTM C 1002 unless otherwise indicated.

PART 3 - EXECUTION

3.1 EXAMINATION

- A. Examine areas and substrates including welded hollow-metal frames and support framing, with Installer present, for compliance with requirements and other conditions affecting performance of the Work.
- B. Examine panels before installation. Reject panels that are wet, moisture damaged, and mold damaged.
- C. Proceed with installation only after unsatisfactory conditions have been corrected.

3.2 APPLYING AND FINISHING PANELS, GENERAL

- A. Comply with ASTM C 840.
- B. Install ceiling panels across framing to minimize the number of abutting end joints and to avoid abutting end joints in central area of each ceiling. Stagger abutting end joints of adjacent panels not less than one framing member.
- C. Install panels with face side out. Butt panels together for a light contact at edges and ends with not more than 1/16 inch of open space between panels. Do not force into place.
- D. Locate edge and end joints over supports. Do not place tapered edges against cut edges or ends.
- E. Isolate perimeter of gypsum board applied to non-load-bearing partitions at structural abutments. Provide 1/4- to 1/2-inch- wide spaces at these locations. Seal joints between edges and abutting structural surfaces with sealant.

3.3 APPLYING INTERIOR GYPSUM BOARD

- A. Install interior gypsum board in the following locations:
 - 1. Ceiling Type, Mold-Resistant: Ceiling surfaces as indicated.
- B. Fastening Methods: Apply gypsum panels to supports with steel drill screws.

3.4 FINISHING GYPSUM BOARD

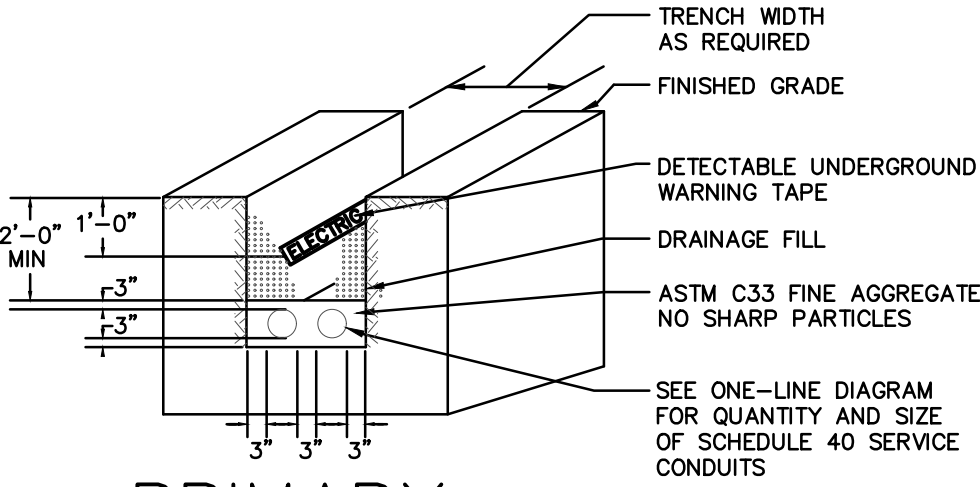
- A. General: Treat gypsum board joints, penetrations, fastener heads, surface defects, and elsewhere as required to prepare gypsum board surfaces for decoration. Promptly remove residual joint compound from adjacent surfaces.
- B. Prefill open joints, rounded or beveled edges, and damaged surface areas.
- C. Apply joint tape over gypsum board joints.
- D. Gypsum Board Finish Levels: Finish panels to levels indicated below and according to ASTM C 840:
 - 1. Level 4: At panel surfaces that will be exposed to view unless otherwise indicated.
 - a. Primer and its application to surfaces are specified in Section 099123 "Interior Painting."

3.5 PROTECTION

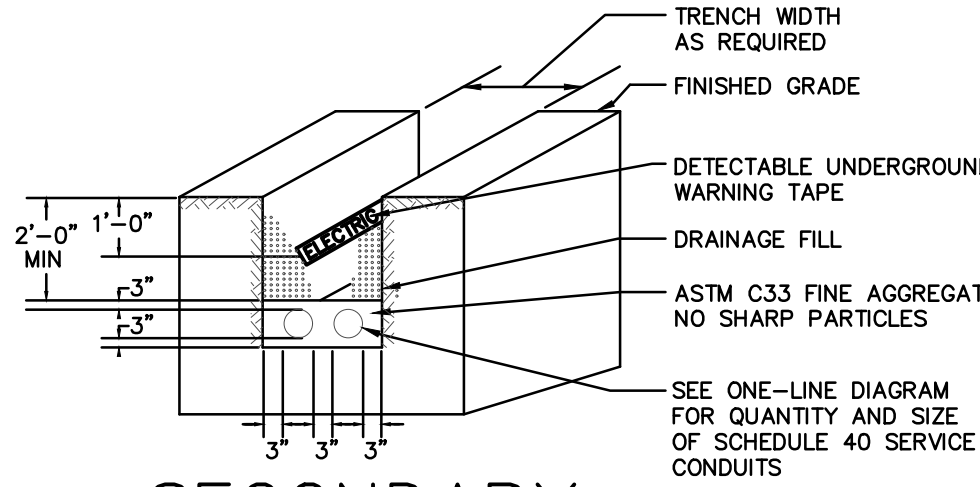
- A. Protect adjacent surfaces from drywall compound and promptly remove from floors and other non-drywall surfaces. Repair surfaces stained, marred, or otherwise damaged during drywall application.
- B. Protect installed products from damage from weather, condensation, direct sunlight, construction, and other causes during remainder of the construction period.
- C. Remove and replace panels that are wet, moisture damaged, and mold damaged.
 - 1. Indications that panels are wet or moisture damaged include, but are not limited to, discoloration, sagging, or irregular shape.
 - 2. Indications that panels are mold damaged include, but are not limited to, fuzzy or splotchy surface contamination and discoloration.

END OF SECTION 092900

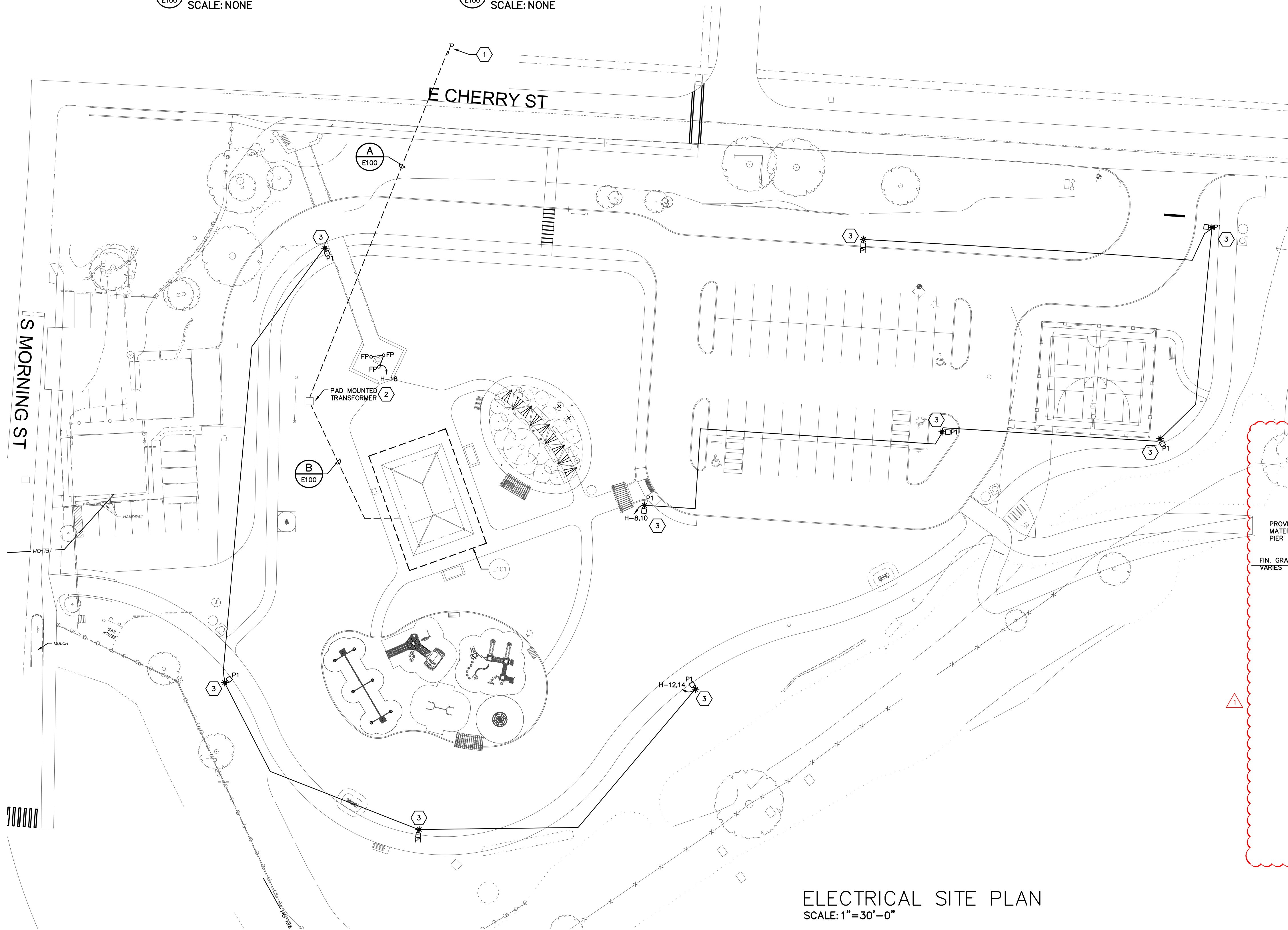
THE DRAWING REPRESENTS A DESIGN INTENT AND CONCEPT ONLY. THIS DOCUMENT AND ALL ASSOCIATED DOCUMENTS ARE PREPARED FOR A SPECIFIC SITE AND EVENT, AND INCORPORATE CALCULATIONS AND MEASUREMENTS AVAILABLE FROM TIME OF DRAFTING. USE OF THIS DESIGN IS GRANTED TO THE CLIENT FOR THE SPECIFIED AND NAMED EVENT ONLY.



PRIMARY
DUCT BANK DETAIL
A E100
SCALE: NONE



SECONDARY
DUCT BANK DETAIL
B E100
SCALE: NONE



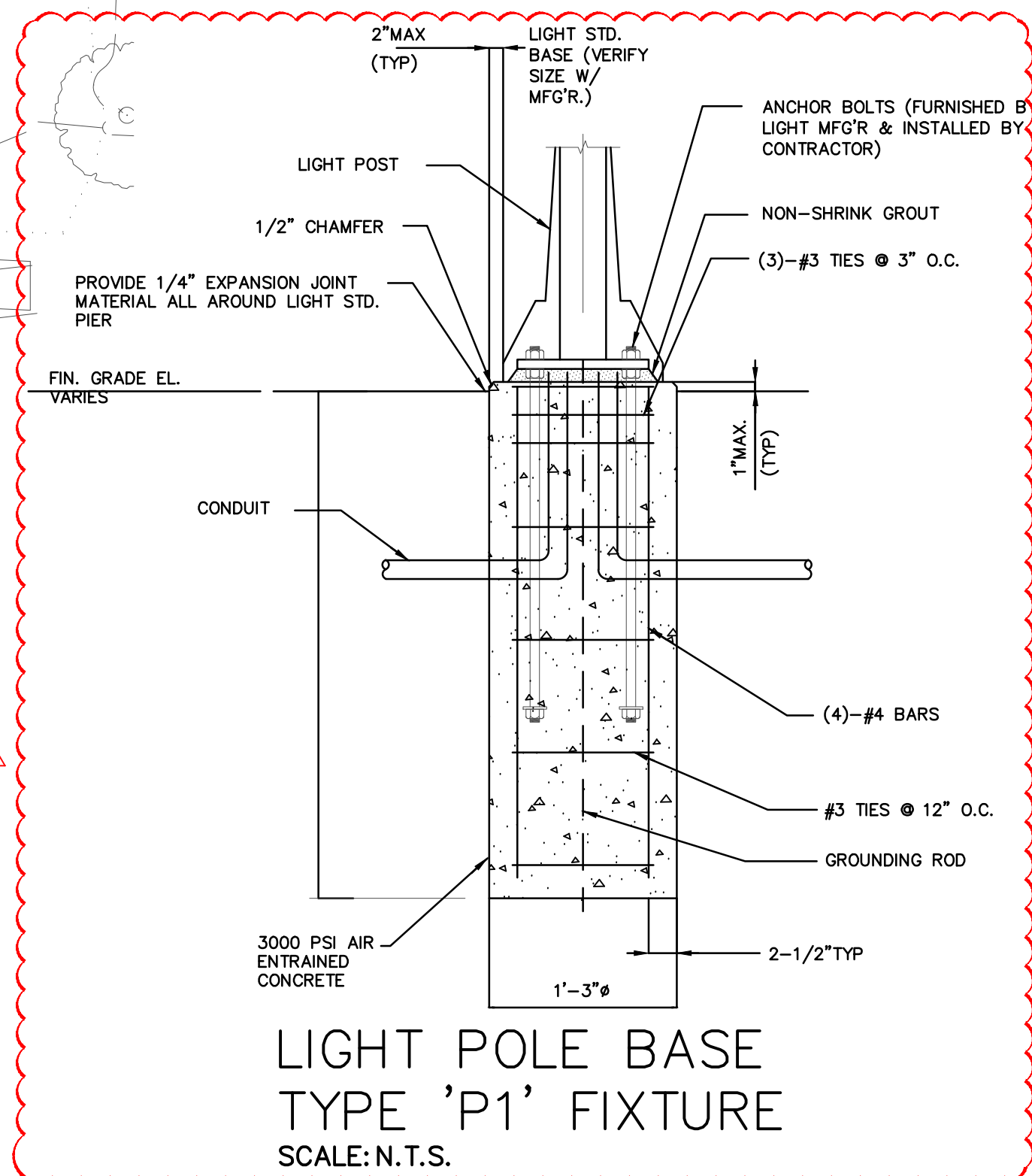
ELECTRICAL SITE PLAN
SCALE: 1"=30'-0"

CODED NOTES

- EXISTING UTILITY POLE. PROVIDE DIRECTIONAL BORING ACROSS E CHERRY ST FOR UTILITY PRIMARY CONDUITS.
- COORDINATE EXACT LOCATION OF PAD-MOUNTED TRANSFORMER WITH OWNER AND UTILITY COMPANY. PROVIDE TRANSFORMER PAD APPROVED BY UTILITY COMPANY.
- PROVIDE POLE BASE. REFER TO POLE BASE DETAIL ON THIS SHEET.

GENERAL NOTES

- COORDINATE WITH THE SITE CIVIL ENGINEERING DRAWINGS AND ALL UTILITY COMPANIES PRIOR TO BIDDING. THE ELECTRICAL SITE PLAN IS DIAGRAMMATIC ONLY AND REPRESENTS GENERAL LOCATIONS OF EQUIPMENT AND UTILITY SPECIFICATIONS. THE SEPARATE UTILITY COMPANIES SHALL PROVIDE DETAILED SPECIFICATIONS AND EQUIPMENT SIZES UPON REQUEST.
- THE SITE ELECTRICAL PLAN DOES NOT SHOW ALL EXISTING UTILITIES, OR EXISTING UNDERGROUND EQUIPMENT, OR NEW UNDERGROUND SERVICES. THIS CONTRACTOR SHALL COORDINATE WITH ALL TRADES AND EXISTING CONDITIONS PRIOR TO THE START OF WORK. PRIOR TO EXCAVATING, LOCATE ALL UNDERGROUND SERVICES AND CLEARLY INDICATE LOCATIONS.
- REFER TO STRUCTURAL DRAWINGS AND FIELD COORDINATE FINAL ROUTING OF ALL CONDUITS UNDER BUILDING WITH BUILDING FOOTINGS, CANOPY/SCREENWALL FOOTINGS AND FOUNDATIONS, ETC. FIELD COORDINATE TRENCHES, CONDUIT ROUTES, AND SWEEPS TO CONDUIT RISERS WITH STRUCTURAL CONTRACTOR PRIOR TO WORK.
- PROVIDE GRADE-LEVEL PULL BOXES AS REQUIRED PER THE SPECIFICATIONS AND IN-GROUND BOX DETAIL ON THIS SHEET. MAXIMUM DISTANCE OF 200' BETWEEN BOXES, NO MORE THAN 2 - 90 DEGREE BENDS BETWEEN BOXES THIS CONTRACTOR SHALL SIZE BOX AS REQUIRED PER NEC 314.28.
- OUTDOOR LIGHTING BRANCH CIRCUIT SHALL BE CONTROLLED THRU LIGHTING RELAY PANEL. REFER TO SHEET E201 FOR RELAY PANEL CONTROL DIAGRAM.



4420 COOPER RD, SUITE 200
CINCINNATI, OH 45242

SEALS

REVISIONS	
BY	DATE
	10-23-2025
	10-31-2025
	11-21-2025
	12-08-2025

REVISION	DATE	BY
PROGRESS SET	10-23-2025	
100% REVIEW SET	10-31-2025	
BID/PERMIT SET	11-21-2025	
ADDENDUM 1	12-08-2025	

No	REVISION	DATE	BY
0			
1			

DRAWING TITLE & PROJECT NAME

ELECTRICAL SITE PLAN

SUNBURY OHIO

JR SMITH PARK PAVILLION

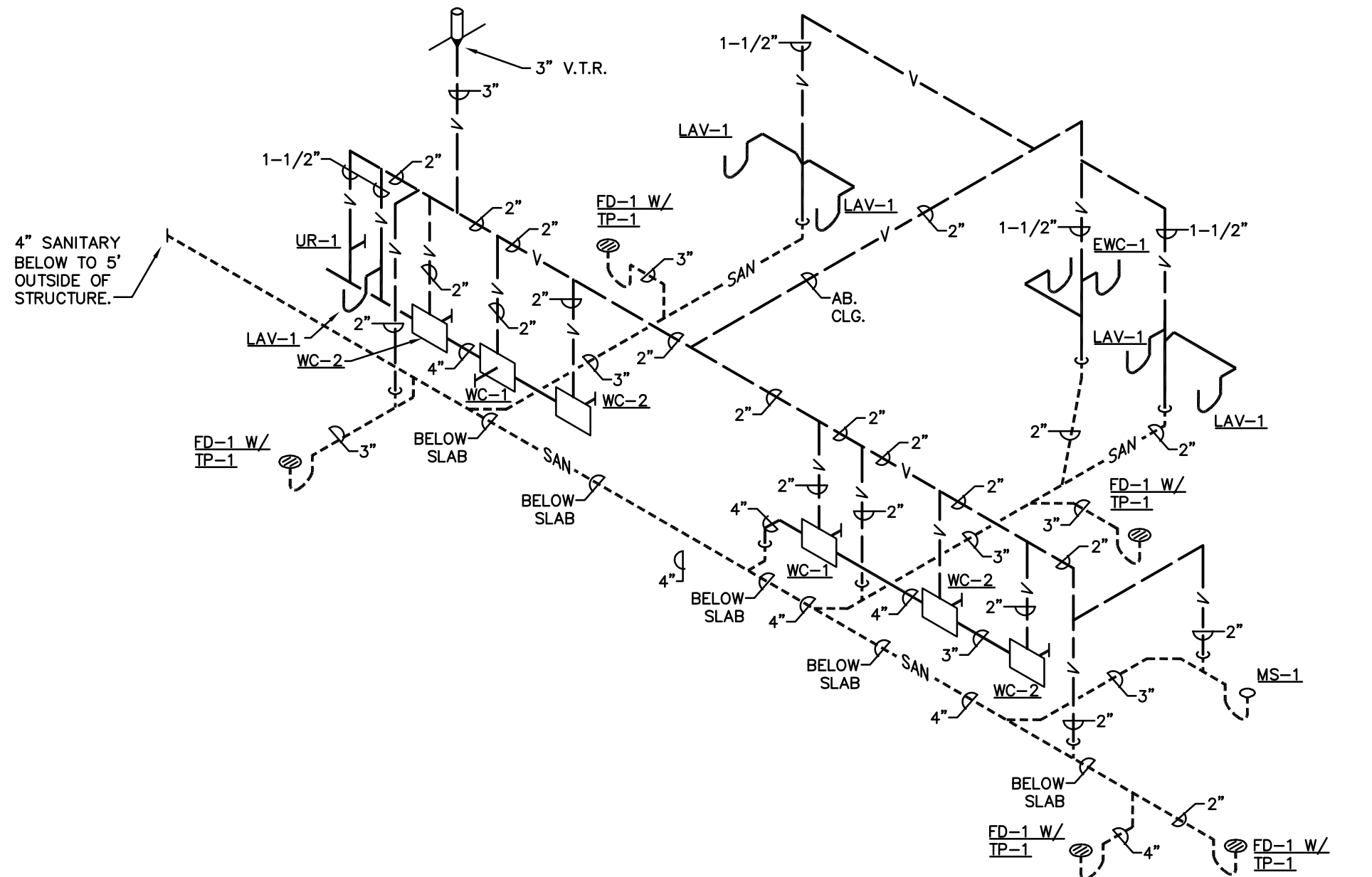
JR SMITH PARK PAVILLION

DRAWN BY	PEA
CHECKED BY	PEA
DATE	07/30/2025
PROJECT NO.	41545
PROJECT STATUS	TBD
DRAWING NO.	E100

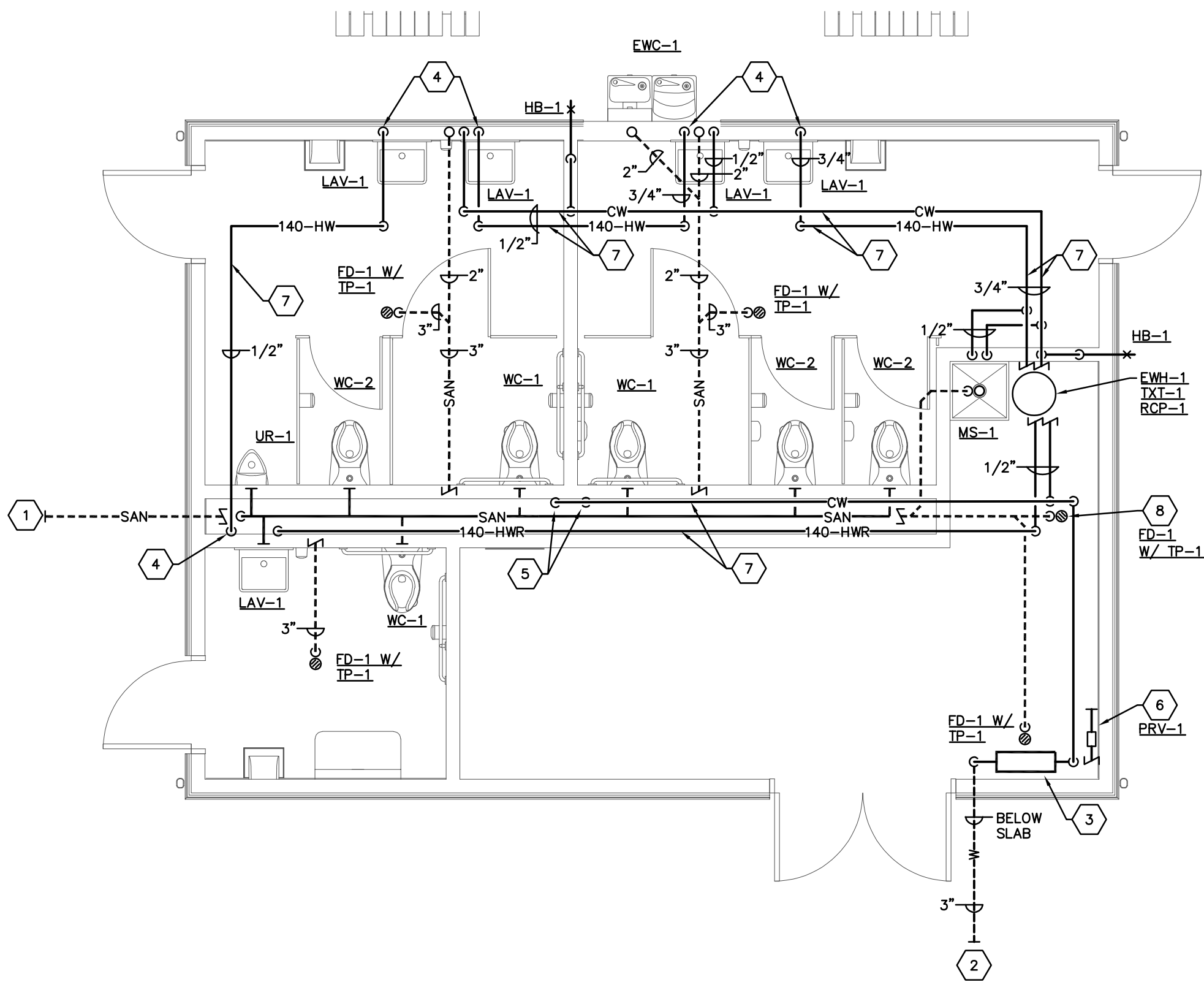
PRATER
Engineering Associates, Inc.
6130 Wilcox Road
Dublin, Ohio 43016
(614) 766 4896
praterengineering.com

DESIGNED BY	DRAWN BY	CHECKED BY	JOB NUM.
F.HENDARTA	F.HENDARTA	-	25106

THIS DRAWING REPRESENTS A DESIGN INTENT AND CONCEPT ONLY. THIS DOCUMENT AND ALL ASSOCIATED DOCUMENTS ARE PREPARED FOR A SPECIFIC SITE AND EVENT, AND INCORPORATE CALCULATIONS AND MEASUREMENTS AVAILABLE FROM TIME OF DRAFTING. USE OF THIS DESIGN IS GRANTED TO THE CLIENT FOR THE SPECIFIED AND NAMED EVENT ONLY.



SANITARY ISOMETRIC DIAGRAM



PLUMBING PLAN
SCALE: 1/4"=1'-0"

PLUMBING FIXTURE SCHEDULE

PLUMBING FIXTURE NOTES:

- UNLESS INDICATED OTHERWISE, THE ARCHITECT SHALL SELECT THE FIXTURE COLOR/FINISH FROM THE MANUFACTURER'S FULL RANGE OF STANDARD OPTIONS.
- UNLESS INDICATED OTHERWISE, ALL EXPOSED METALLIC COMPONENTS TO BE FURNISHED WITH POLISHED CHROME FINISH, INCLUDING FAUCETS, TRAPS, STOPS, PIPING, ETC.
- UNLESS INDICATED OTHERWISE, ALL EXPOSED PIPING SHALL BE FURNISHED WITH POLISHED CHROME FINISH BRASS ESOUTCHEONS AT ALL WALL/CABINET PENETRATIONS AND FIXTURE CONNECTIONS.
- UNLESS INDICATED OTHERWISE, ALL HARD-WIRED FIXTURES THAT ARE 120V POWER WIRING TO BE PROVIDED BY THE ELECTRICAL CONTRACTOR. ALL LOW-VOLTAGE WIRING FROM TRANSFORMER TO SOLENOID VALVE TO BE PROVIDED BY THE PLUMBING CONTRACTOR.

FIXTURE	MANUFACTURER	REMARKS	PIPE	SIZE
			CW	HW
WC-1 (HANDICAP ACCESS-IBLE)	AMERICAN STANDARD/SLOAN/BEMIS/ZURN	FIXTURE; AMERICAN STD. NO. 3351-101 AFWALL MILLENNIUM FLOWISE ELONGATED FLUSHOMETER WALL HUNG TOP SPUD TOILET PROVIDE WITH EVERCLEAN COATING. OPERATING RANGE OF 1.1 GPF TO 1.6 GPF. CONTROLS; SLOAN ROYAL 111-1.28-CO; MANUAL FLUSH VALVE (1.28 GPF), TOP SPUD CONNECTION, SINGLE FLUSH, POLISHED CHROME SEAT; BEMIS MODEL NO. 1655SSCT OPEN FRONT LESS COVER, ELONGATED, EXTRA HEAVY-DUTY, INJECTION MOLDED SOLID PLASTIC TOILET SEAT. WITH SELF-SUSTAINING CHECK HINGES. ZURN SERIES Z1200 FIXTURE ASSEMBLY TO COMPLY WITH HANDICAP ACCESS REQUIREMENTS.	1"	---
LAV-1 (HANDICAP ACCESS-IBLE)	AMERICAN STD./SLOAN/LEONARD/McGUIRE	FIXTURE; AMERICAN STANDARD DECORUM NO. 9024.001EC WALL HUNG SINK. VITREOUS CHINA W/ OVERFLOW & GRID DRAIN. CONTROLS; SLOAN NO. ETF-810 (WIRED 120V POWER) SENSOR FAUCET WITH 0.5 GPM LAMINAR FLOW SPOUT, PLUG-IN TRANSFORMER. TW MIXER; SIMILAR TO LEONARD NO. 170 THERM. MIXER FOR SGL. FAUCET, NO. 270 FOR MULTIPLE FAUCETS (MAX. 6 SIDE BY SIDE IN A SINGLE RM.). PROVIDE W/ INLET CHECK/STOPS & ASSE 1070 LISTING. INSTALL MIXER BELOW FIXTURE OUT OF HANDICAP ACCESS CLEARANCE SPACE. MIXERS IN PUBLIC TOILET R.M.'S. TO BE WITHIN ACCESSIBLE CASEWORK OUT OF SIGHT. SET FOR 105 DEGREES F. TW SUPPLY TO FAUCET. TRAP; McGUIRE MODEL 8902 1 1/4"x1 1/2" 17 GA. P-TRAP, CHROME PLATED STOP(S); McGUIRE MODEL 2165LK 1/2" LAVATORY SUPPLIES W/ LOOSE KEY BRASS ANGLE STOPS & COPPER FLEX TUBE RISERS. ALL CHROME PLATED COVER; McGUIRE PRO-WRAP SERIES FOR EXPOSED SUPPLY AND DRAIN CARRIER; ZURN Z1231 CONCEALED ARM WALL LAVATORY CARRIER. FIXTURE ASSEMBLY TO COMPLY WITH HANDICAP ACCESS REQUIREMENTS.	1/2"	1/2"
UR-1 (HANDICAP ACCESS-IBLE)	AMERICAN STD/SLOAN/ ZURN	FIXTURE; AMERICAN STD. NO. 6590.001EC WASHBROOK FLOWISE LOW CONSUMPTION URINAL. PROVIDE WITH EVERCLEAN COATING. OPERATING RANGE OF 0.125 GPF TO 1.0 GPF. CONTROLS; SLOAN REGAL 186 MANUAL FLUSH VALVE (0.5 GPF) CARRIER; ZURN SERIES Z1221 FIXTURE ASSEMBLY TO COMPLY WITH HANDICAP ACCESS REQUIREMENTS.	3/4"	---
MS-1	FIAT/CHRONOMITE	FIXTURE; FIAT MODEL NO. MSB2424 (MOLDED STONE) WITH INTEGRAL DRAIN CONTROLS; FIAT MODEL NO. 830-AA WITH INTEGRAL STOPS & VAC. BRKR. TRAP; CAST IRON OR COPPER 3" P-TRAP OTHER; FIAT MODEL NO. E77AA24 VINYL BUMPER GUARDS; FIAT MODEL NO. MSG2424 STAINLESS STEEL WALL GUARDS	1/2"	1/2"
EW-1 (HANDICAP ACCESS-IBLE)	ELKAY/ZURN/McGUIRE	FIXTURE; ELKAY MODEL NO. LK4408BF, OUTDOOR EZH2O BOTTLE FILLING STATION WALL MOUNT WITH SINGLE FOUNTAIN NON-FILTERED NON-REFRIGERATED. FEATURES SHALL INCLUDE HEAVY DUTY VANDAL RESISTANT; LAMINAR FLOW, 300 SERIES STAINLESS. FURNISHED WITH VANDAL RESISTANT BUBBLER. MECHANICAL BUTTON ACTIVATION. PRODUCT SHALL BE WALL MOUNT (ON WALL). FOR OUTDOOR APPLICATIONS, SERVING 2 STATION(S). FINISH TO BE BLACK (BK) CARRIER; ZURN SERIES Z1225 TRAPS; McGUIRE MODEL 8902 1 1/4"x1 1/2" 17 GA. P-TRAP, CHROME PLATED STOP(S); McGUIRE MODEL 2166 1/2" CLOSET SUPPLY W/ WHEEL HANDLE BRASS ANGLE STOP AND COPPER FLEX TUBE RISER. ALL CHROME PLATED FIXTURE ASSEMBLY TO COMPLY WITH HANDICAP ACCESS REQUIREMENTS.	1/2"	---

PLUMBING EQUIPMENT

TP-1: TRAP PRIMER VALVE ASSEMBLY

SIMILAR TO SIOUX CHIEF PRIME PERFECT SERIES 695 WITH A MAXIMUM WORKING PRESSURE OF 250 PSIG, PRESSURE ACTIVATED AT A MINIMUM OF 10 PSIG DIFFERENTIAL. 1/2" FEMALE INLET, 1/2" MALE OUTLET, INTEGRAL SEDIMENT SCREEN, DIAPHRAGM ADJUSTMENT, VACUUM BREAKER, AND ADJUSTABLE DISCHARGE RATE. CERTIFIED BY THE AMERICAN SOCIETY OF SANITARY ENGINEERING TO ASSE 1018-2001 SPECIFICATIONS, AND LISTED BY THE UPC/IAPMO. INSTALLATION TO BE PER MANUFACTURER'S RECOMMENDATIONS.

EW-1: ELECTRIC WATER HEATER

THE WATER HEATER(S) SHALL BE DURA-POWER™ MODEL(S) NO. DEL-20 AS MANUFACTURED BY A. O. SMITH OR AN APPROVED EQUAL. HEATER(S) SHALL BE RATED AT 6 KW, 240 VOLTS, SINGLE-PHASE, 60 CYCLE AC, 1 GALLONS PER HOUR AT 90° F TEMPERATURE RISE, AND LISTED BY UNDERWRITERS' LABORATORIES. MODELS SHALL MEET THE STANDBY LOSS REQUIREMENTS OF THE U.S. DEPARTMENT OF ENERGY AND CURRENT EDITION OF ASHRAE/IES 90.1. TANK(S) SHALL BE 20 GALLON CAPACITY. HEATER(S) SHALL HAVE 150 PSI WORKING PRESSURE AND BE EQUIPPED WITH EXTRUDED HIGH DENSITY ANODE ROD. ALL INTERNAL SURFACES OF THE HEATER(S) EXPOSED TO WATER SHALL BE GLASS LINED COMPOSITION THAT HAS BEEN FUSED-TO-STEEL. ELECTRIC HEATING ELEMENTS SHALL BE MEDIUM WATT DENSITY WITH ZINC PLATED COPPER SHEATH. EACH ELEMENT SHALL BE CONTROLLED BY AN INDIVIDUALLY MOUNTED THERMOSTAT AND HIGH TEMPERATURE CUTOFF SWITCH. THE OUTER JACKET SHALL BE OF BACKED ENAMEL FINISH AND SHALL ENCLOSE THE TANK WITH FOAM INSULATION. ELECTRICAL JUNCTION BOX WITH HEAVY DUTY TERMINAL BLOCK SHALL BE PROVIDED (EXCEPT ON 120V & 277V [NO JUNCTION BOX ON DEL-6 THRU 20]). THE DRAIN VALVE SHALL BE LOCATED IN THE FRONT FOR EASE OF SERVICING. HEATER TANK SHALL HAVE A THREE YEAR LIMITED WARRANTY AS OUTLINED IN THE WRITTEN WARRANTY. FULLY ILLUSTRATED INSTRUCTION MANUAL TO BE INCLUDED.

RCP-1: HOT WATER RETURN RECIRCULATING PUMP

EQUIVALENT TO B & G MODEL #PL-30 IN-LINE CENTRIFUGAL TYPE PUMP WITH CLOSE COUPLED DRIVE MOTOR, ALL BRONZE CONSTRUCTION, LISTING FOR POTABLE WATER SERVICE AND 150 PSIG WORKING PRESSURE RATING. SEE DOMESTIC WATER HEATER DIAGRAMS ON SHEET P102 FOR RATINGS AND CAPACITIES. PROVIDE RECIRCULATING PUMP INTERFACED WITH WATER HEATER CONTROLS. COORDINATE WITH WATER HEATER MANUFACTURER REQUIREMENTS.

TXT-1: THERMAL EXPANSION TANK (ASME LISTED)

AMTROL ST-5-C WITH STEEL SHELL, RIGID POLYPROPYLENE LINER AND HEAVY DUTY RUBBER DIAPHRAGM. LINER AND DIAPHRAGM MECHANICALLY BONDED TO SHELL TO FORM A SEPARATE AIR CHAMBER AND NON-CORROSIVE WATER RESERVOIR. AIR CHAMBER PRE-CHARGED TO 10-12 PSIG, CONTRACTOR TO ADJUST THE MANUFACTURER'S PRE-CHARGE AIR PRESSURE TO THE ACUTAL SYSTEM WORKING PRESSURE IN ACCORDANCE WITH MANUFACTURER INSTALLATION GUIDELINES, AND PROVIDED WITH A STANDARD AIR VALVE FITTING. SEE PLANS FOR RATING AND CAPACITIES. PROVIDE ASME RATED AND 175 PSIG WORKING PRESSURE.

PRV-1: PRESSURE REDUCING VALVE

SIMILAR TO ZURN WILKINS MODEL 600XL3. PRESSURE REDUCING VALVE SHALL BE CERTIFIED TO NSF/ANSI/CAN 61 & 372, CONSISTING OF A LOW LEAD CAST BRONZE BODY, BRONZE BELL HOUSING, AND A BOLT TO ADJUST THE DOWNSTREAM PRESSURE. THE BRONZE BELL HOUSING SHALL BE THREADED TO THE BODY. THE ASSEMBLY SHALL BE A BALANCED PISTON DESIGN AND SHALL REDUCE PRESSURE IN BOTH FLOW AND NO-FLOW CONDITIONS AND MAINTAIN LESS THAN 10 PSI DROP FROM SET PRESSURE UP TO A FLOW RATE OF 8 GPM. THE ASSEMBLY SHALL BE ACCESSIBLE FOR MAINTENANCE WITHOUT HAVING TO REMOVE THE BODY FROM THE LINE. THE ASSEMBLY SHALL INCLUDE A REMOVABLE CARTRIDGE AND STAINLESS STEEL CORROSION RESISTANT HARDWARE AND STEM.

HB-1: HOSE BIBB

WOODFORD MODEL 24 AND B24 ARE ANTI-SIPHON, VACUUM BREAKER PROTECTED WALL FAUCETS DESIGNED FOR IRRIGATION PURPOSES IN MILD CLIMATE AREAS

PLUMBING NOTES

- REFER TO ARCHITECTURAL DOCUMENTATION FOR ADDITIONAL SCOPE/INFORMATION REGARDING DEMOLITION/REMODELING WORK, INCLUDING IDENTIFICATION OF AREAS AND ITEMS/ELEMENTS INVOLVED, AS WELL AS INFORMATION OF BOTH A GENERAL AND SPECIFIC NATURE.
- UNLESS DIRECTED OTHERWISE, WHERE CONCEALING/FINISH STRUCTURE IS PROVIDED UNDER SEPARATE CONTRACT, ALL WORK IN THE PLUMBING CONTRACT NOT SPECIFICALLY INTENDED OR IDENTIFIED FOR EXPOSED/VISIBLE INSTALLATION SHALL BE INSTALLED WITHIN THE CONCEALING STRUCTURE.
- ALL PIPING SHOWN IS ABOVE CEILING IN AREAS WITH DROPPED CEILINGS, OR AT BOTTOM OF OVERHEAD SUPPORT STRUCTURE IN EXPOSED STRUCTURE AREAS, UNLESS INDICATED OTHERWISE.
- THE PLUMBING CONTRACTOR IS TO SECURE AND VERIFY ALL MEASUREMENTS AND CONDITIONS AT THE PROJECT IN ADVANCE OF WORK (INCLUDING FABRICATION).
- THE PLUMBING CONTRACTOR IS TO PROVIDE ALL ADDITIONAL STEEL, HANGERS, RODS, CLAMPS, ETC., AS REQUIRED FOR PROPER INSTALLATION, SUPPORT, AND COORDINATION WITH WORK PROVIDED UNDER SEPARATE CONTRACT. UNLESS INDICATED OTHERWISE IN PROJECT SPECIFICATIONS OR BY THE PIPE MATERIAL MANUFACTURER, SUPPORT PIPING AS FOLLOWS:
A. CAST IRON PIPING (NOT IN EARTH); 5 FT. CENTERS
B. STEEL PIPING; 10 FT. CENTERS
C. COPPER PIPING; 8 FT. CENTERS
D. PLASTIC PIPING; 4 FT. CENTERS
- THE PLUMBING CONTRACTOR IS RESPONSIBLE FOR FIRESTOPPING AT ALL PLUMBING RELATED PENETRATIONS OF FIRE SMOKE AND OTHER RATED STRUCTURES, INCLUDING FLOORS, WALLS, PARTITIONS, ETC. REFER TO ARCHITECTURAL DOCUMENTATION FOR LOCATIONS OF ALL RATED STRUCTURES, AND SPECIFIC INFORMATION AND REQUIREMENTS PERTAINING TO SAME.
- LAYOUT AND INSTALLATION OF PLUMBING CONTRACT PIPING, EQUIPMENT, ITEMS AND ELEMENTS INDICATED ON PLAN IS SHOWN IN NATURE. EXACT LOCATION, ROUTING AND INSTALLATION TO BE COORDINATED WITH BUILDING STRUCTURE AND ALL OTHER WORK PROVIDED UNDER SEPARATE CONTRACT.
- COORDINATE EXACT LOCATION AND INSTALLATION OF ALL PLUMBING UTILITIES REQUIRED AND PROVIDED FOR WORK UNDER SEPARATE CONTRACT WITH THE APPROPRIATE CONTRACTOR(S) IN ADVANCE OF WORK. THIS INCLUDES SUPPLY AND DRAIN ELEMENTS, FOR DIRECT (PIPED) AND/OR INDIRECT (FLOOR/HUB DRAIN, AIR GAP, ETC.) CONNECTION/SERVICE.
- RUN ALL WATER LINES LEVEL.
- ROUGH IN ALL PIPING (SUPPLY, RETURN, WASTE, DRAIN, ETC.) FOR FIXTURES/EQUIPMENT INSTALLATION THRU OR ON FACE OF WALL (AS APPLICABLE), AND TERMINATE WITH SHORT PIPE NIPPLE AND CAP.
- ALL WORK SHALL BE INSTALLED IN ACCORDANCE WITH BUCHTEL OHIO BUILDING CODE, INCLUDING APPLICABLE PLUMBING, MECHANICAL AND HANDICAP ACCESSIBILITY PROVISIONS.
- PROVIDE CLEANOUTS AS FOLLOWS:
A. IN ALL HORIZONTAL SANITARY PIPING AT INTERVALS NOT TO EXCEED 100 L.F. IN LENGTH.
B. AT EACH CHANGE OF DIRECTION BY SANITARY PIPING BELOW GRADE OR AT THE LOWEST POINT OF THE HORIZONTAL DRAINAGE SYSTEM GREATER THAN 45 DEGREES, UNLESS ANOTHER CLEANOUT IS WITHIN 40 FT. DEVELOPED LENGTH.
C. AT ALL SANITARY PIPING BUILDING EXIT POINTS, AND/OR BUILDING SEWER CONNECTIONS FOR SITE UTILITY TIE-IN.
- UNLESS INDICATED OTHERWISE, ALL FIXTURES AND EQUIPMENT PROVIDED WITH PLUMBING SUPPLY PIPING TO BE FURNISHED WITH APPROVED/LISTED STOPS IN ACCESSIBLE LOCATIONS.
- SEE ARCHITECTURAL DRAWINGS FOR DETAILS OF CASEWORK, EQUIPMENT AND OTHER ITEMS/ELEMENTS PROVIDED UNDER SEPARATE CONTRACT, INCLUDING EXACT LOCATIONS AND UTILITY CONNECTION REQUIREMENTS. COORDINATE PLUMBING UTILITY WORK AS REQUIRED IN ADVANCE, INCLUDING PLACEMENT OF FITTINGS, ACCESSORIES, APURTENANCES, DRAINS, ETC.
- VERIFY THE EXACT LOCATION AND INSTALLATION REQUIREMENTS FOR ALL DRAINS WITH THE ARCHITECTURAL AND STRUCTURAL DOCUMENTATION FOR PROPER PLACEMENT IN RESPECT TO SLOPES AND STRUCTURE AT EACH DRAIN. COORDINATE INSTALLATION WITH THE APPROPRIATE CONTRACTOR. FINAL INSTALLATION AND LOCATION SUBJECT TO APPROVAL.
- UNLESS INDICATED OTHERWISE, BUILDING DRAIN (STORM, SANITARY) TIE-INS ARE PROVIDED AT 5 FT. BEYOND FACE OF EXTERIOR PERIMETER STRUCTURE AND CONTINUED TO SITE UTILITY ELEMENTS UNDER SEPARATE CONTRACT. COORDINATE/CONFIRM LOCATIONS (INCLUDING INVERT ELEVATION) WITH THE SITE UTILITY CONTRACTOR IN ADVANCE.
- NO PLUMBING PIPING IS TO BE RUN THRU OR ABOVE THE FOLLOWING AREAS, ELECTRICAL SWITCHGEAR ROOMS, ELECTRICAL UTILITY ROOMS/CLOSETS, ELEVATOR SHAFTS, ELEVATOR MACHINE ROOMS, TELEPHONE/COMMUNICATION ROOMS/CLOSETS, UPS EQUIPMENT ROOMS, BATTERY STORAGE AND/OR CHARGING ROOMS, DATA PROCESSING AND/OR STORAGE ROOMS; OR ANY SIMILAR TYPE AREAS SENSITIVE TO POTENTIAL WATER LEAKAGE OR DISCHARGE AS A RESULT OF ACCIDENTAL DAMAGE TO, OR DETERIORATION OF, PIPING.
- PLUMBING PIPING IS NOT PERMITTED TO RUN ABOVE ANY ELECTRICAL SWITCHGEAR, MOTOR CONTROL CENTERS OR PANELS (INCLUDING ACCESS/CLEARANCE SPACE 42" IN FRONT OF THESE ITEMS, AND MIN. 30" WIDE), UNDER ANY CIRCUMSTANCES.
A. LOCATION OF NEW ITEMS OF THESE TYPES TO BE DETERMINED AND CONFIRMED FROM INDICATION BY THE PROJECT ELECTRICAL DOCUMENTATION, AND ACTUAL INSTALLATION CONFIRMED WITH THE ELECTRICAL CONTRACTOR PRIOR TO START OF WORK.

CODED NOTES

- CONNECT NEW 4" TO NEW 6" SAN PIPING FROM SITE WORK CONTRACTOR AT THIS APPROXIMATE LOCATION. INVERT ELEVATION AT CONNECTION POINT TO BE COORDINATED IN ADVANCE OF WORK.
- CONNECT NEW 3" CW TO NEW 3" CW PIPING FROM SITE WORK CONTRACTOR AT THIS APPROXIMATE LOCATION AND EXTEND BELOW SLAB AS SHOWN. EXACT LOCATION OF CONNECTION POINT, INCLUDING INVERT ELEVATION, TO BE FIELD COORDINATED IN ADVANCE OF WORK.
- NEW 3" WATER METER AND ASSE 1013 BACKFLOW PREVENTER AT THIS APPROXIMATE LOCATION. PROVIDE 3" TEE AND ASSE 1013 BACKFLOW PREVENTER FOR WATER CONNECTION TO SPLASH PAD. SEE SHEET P201 FOR FURTHER DETAIL. WATER METER TO BE PURCHASED FROM LOCAL WATER AUTHORITY AND INSTALLED BY THIS CONTRACTOR. PROVIDE (IN ORDER) BALL VALVE, BLOW OUT TEE FITTING, AND BALL VALVE WITH HOSE END CONNECTION POINTS UPSTREAM OF WATER METER FOR WINTERIZATION EFFORTS.
- LOOP HW PIPING IN WALL SO THAT NO MORE THAN 2 L.F. OF NON-RECIRCULATED PIPING IS WITHIN ROUGH-IN TO LAVATORIES.
- DROP 1-1/2" CW DOWN IN WALL TO SERVE NEARBY PLUMBING FIXTURES. SEE PLUMBING FIXTURE SCHEDULE FOR ROUGH-IN SIZING. PROVIDE WATER HAMMER ARRESTOR.
- PROVIDE 3" CW TAP TO SPLASH PAD PROVIDE PRV-1 SET TO 35 PSI. CONTINUATION BY OTHERS.
- ALL COLD AND HOT WATER PIPING TO BE SLOPED BACK TO DROPS AT WALL STRUCTURE AND PROVIDED WITH BALL VALVES WITH HOSE-END CONNECTION POINTS FOR WINTERIZATION EFFORTS.
- DRAIN PIT IN THIS LOCATION BY OTHERS. PROVIDE 2" FLOOR DRAIN AT BOTTOM OF DRAIN PIT. PROVIDE WINTERIZATION DRAIN VALVES ON WATER FEATURE MANIFOLD BY OTHERS. SEE DETAIL ON SPLASH PAD DRAWINGS FOR FURTHER DETAIL. COORDINATE DRAIN PLACEMENT WITH STRUCTURAL CONTRACTOR.

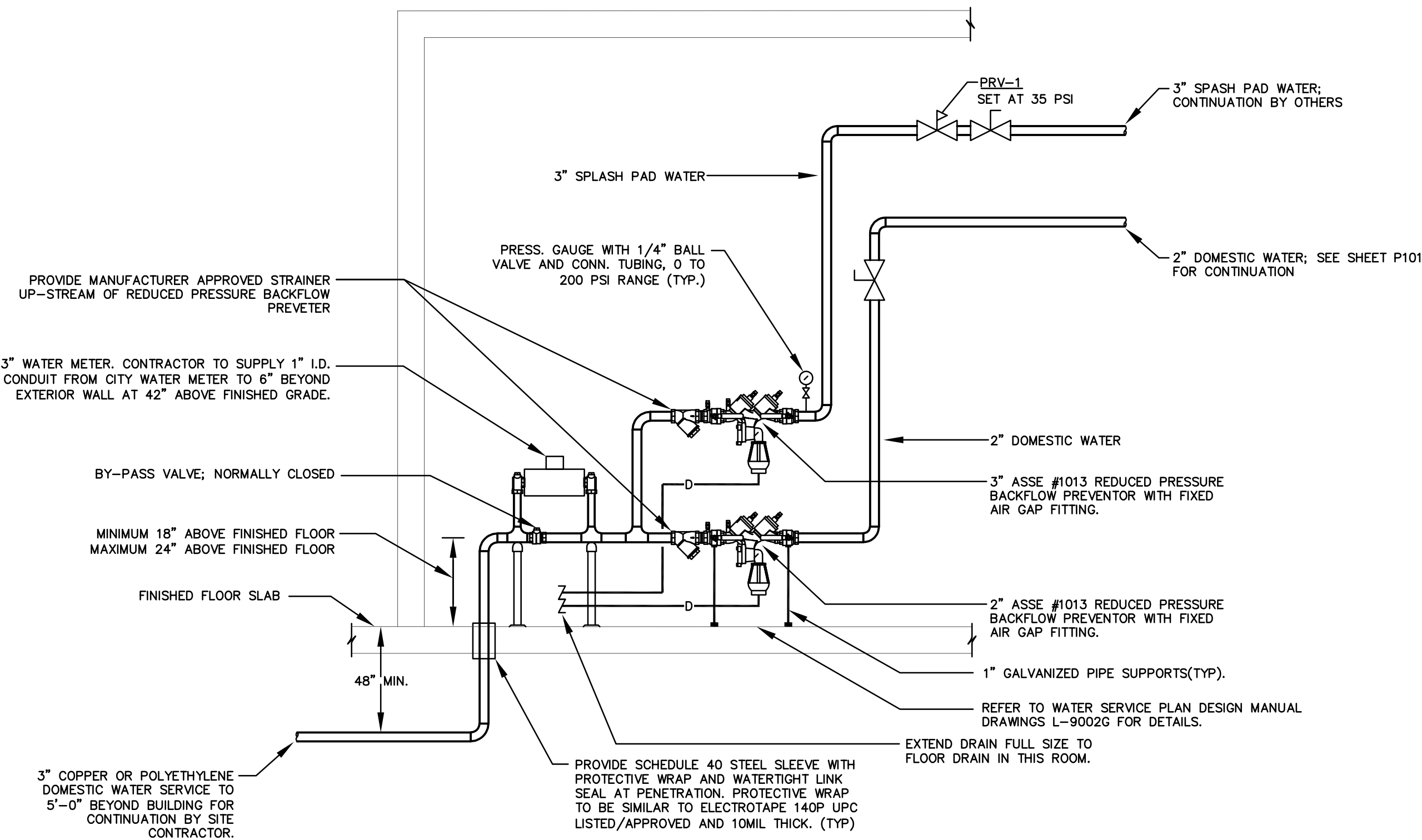
P101-25106.DWG

PRATER Engineering Associates, Inc.			
6130 Wilcox Road Dublin, Ohio 43016		(614) 766 4896 praterengineering.com	
DESIGNED BY R. MILLER	DRAWN BY R. MILLER	CHECKED BY C. ANDERSON	JOB NUM. 25106

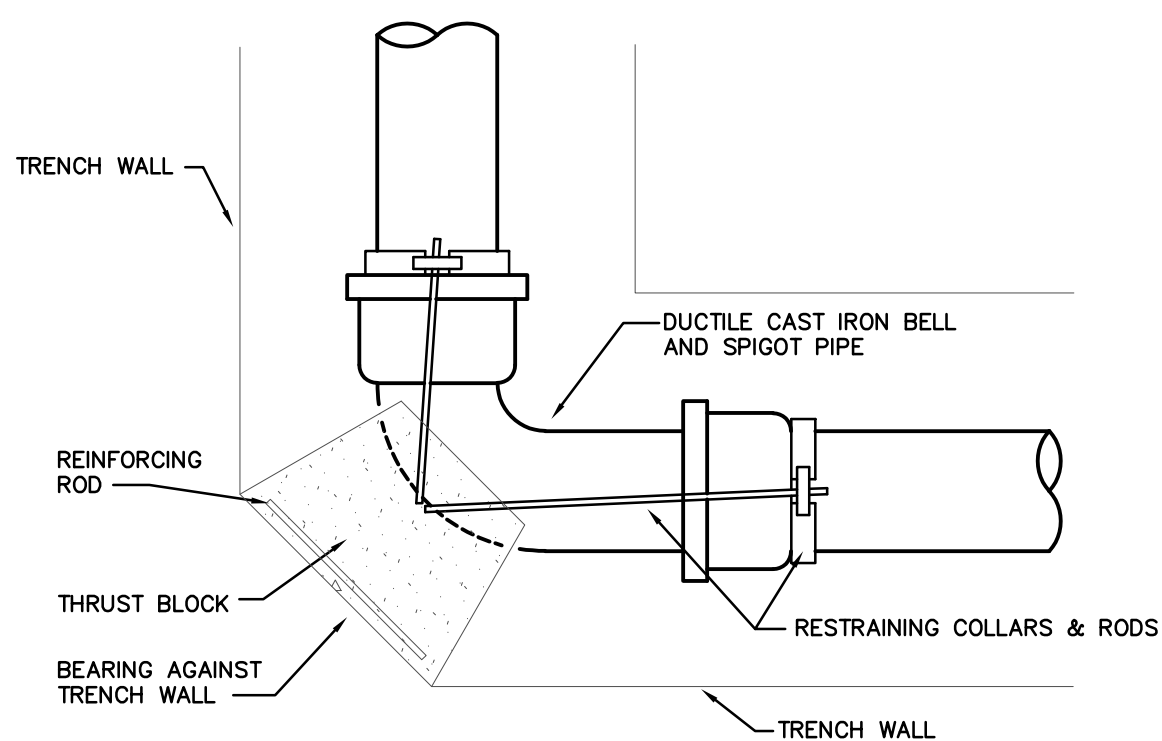
4420 COOPER RD, SUITE 200
CINCINNATI, OH 45242

REVISIONS			
BY	DATE	REVISION	
	10-23-2025	PROGRESS SET	
	10-31-2025	100% REVIEW SET	
	11-21-2025	BID/PERMIT SET	
	12/08/2025	ADDENDUM 1	
No			
DRAWING TITLE & PROJECT NAME			
PLUMBING PLAN			
SUNBURY OHIO			
JR SMITH PARK PAVILLION			
JR SMITH PARK PAVILLION			
DRAWN BY: PEA			
CHECKED BY: PEA			
DATE: 07/30/2025			
PROJECT NO: 41545			
PROJECT STATUS: TBD			
DRAWING NO.			
P101			

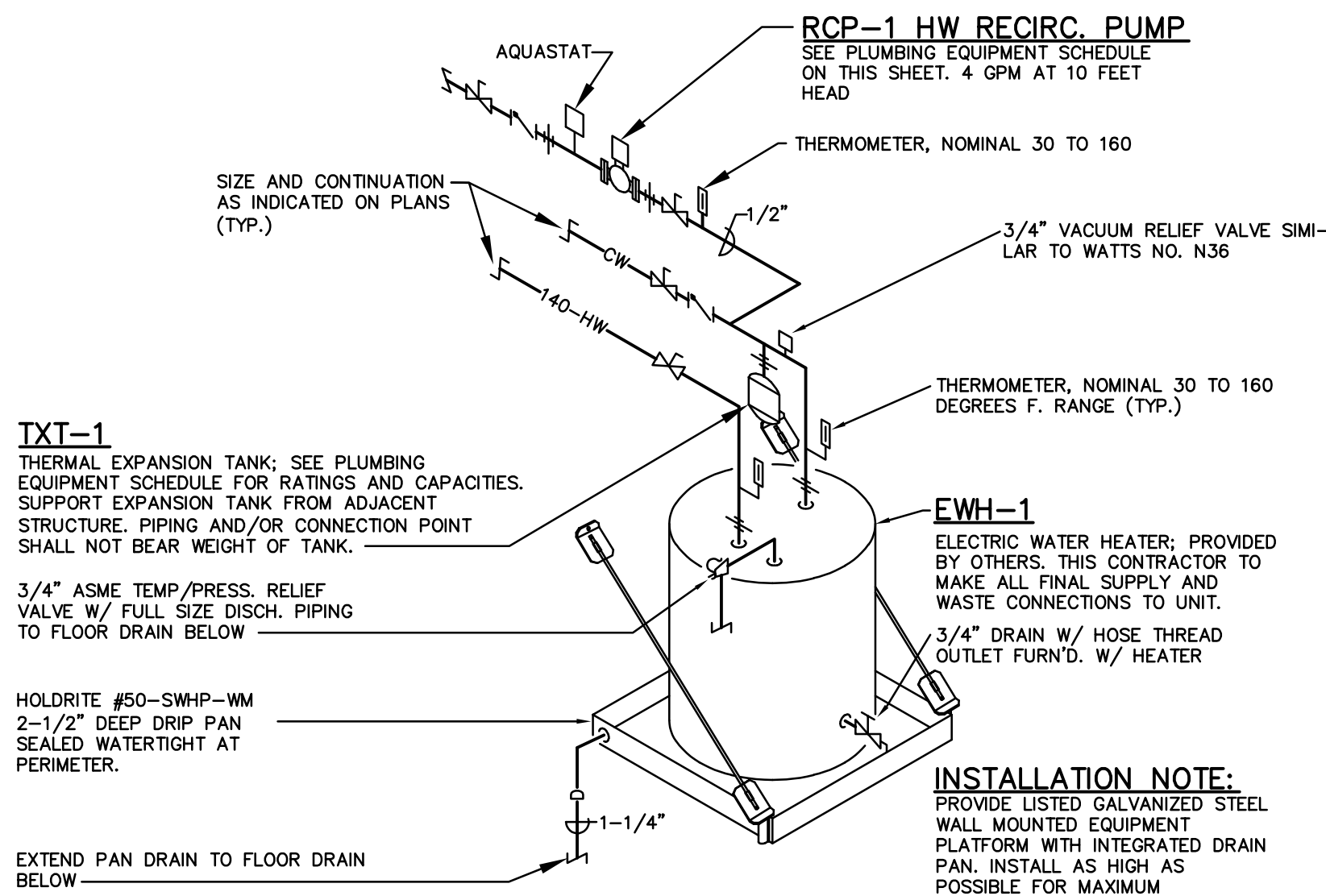
THE DRAWING REPRESENTS A DESIGN INTENT AND CONCEPT ONLY. THIS DOCUMENT AND ALL ASSOCIATED DOCUMENTS ARE PREPARED FOR A SPECIFIC SITE AND EVENT, AND INCORPORATE CALCULATIONS AND MEASUREMENTS AVAILABLE FROM TIME OF DRAFTING. USE OF THIS DESIGN IS GRANTED TO THE CLIENT FOR THE SPECIFIED AND NAMED EVENT ONLY.



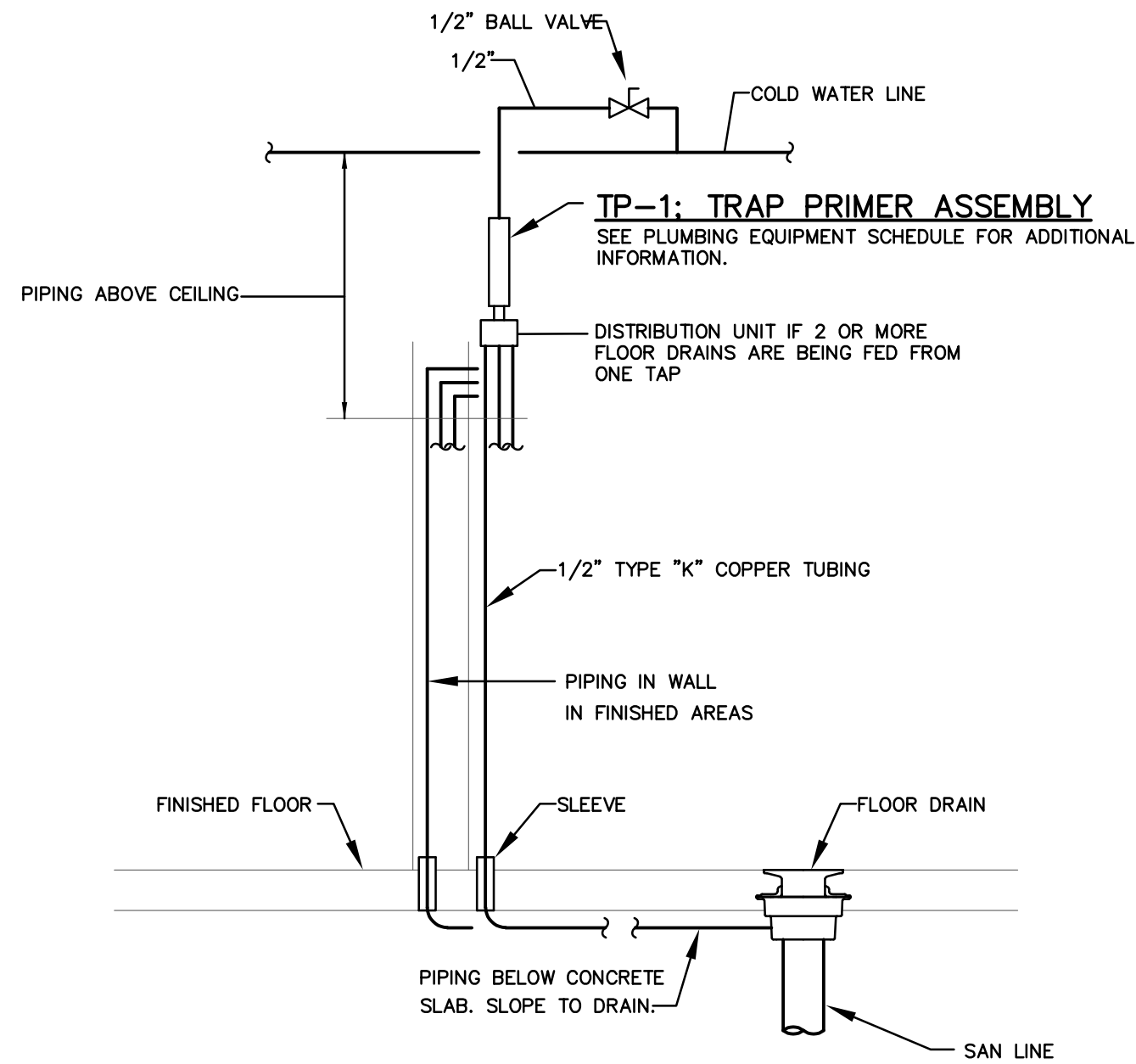
DOMESTIC WATER SERVICE DETAIL



TYPICAL 90° THRUST BLOCK DETAIL
NOT TO SCALE



EWH-1; ELECTRIC WATER HEATER PIPING DIAGRAM
NOT TO SCALE




TP-1; TRAP PRIMER PIPING DIAGRAM
NOT TO SCALE
(TYPICAL AT ALL FLOOR DRAIN LOCATIONS)

DRAIN & CLEANOUT SCHEDULE		
DES.	LOCATION	
FD-1	FLOOR DRAIN	ZURN ZN-415-B CAST IRON FLOOR DRAIN WITH DOUBLE DRAINAGE FLANGE AND WEEP-HOLES. BOTTOM CAULK OUTLET WITH TYPE B SIZE 6" DIAMETER NICKEL BRONZE ADJ-USTABLE STRAINER. FURNISH WITH CLAMPING COLLAR EXCEPT FLOOR DRAINS IN ON-GRADE LOCATIONS.
C.O.	WALLS OF FINISHED AREA	Z-1446 WITH ROUND POLISHED STAINLESS STEEL ACCESS COVER AND ABS PLASTIC USE CLEANOUT TEE AND PROVIDE CLEANOUT AND ACCESS COVER SIMILAR TO ZURN BRONZE THREADED PLUG. SIZE TO SUIT CLEANOUT.
C.O.	FLOORS OF FINISHED AREA	PROVIDE FRAME AND ACCESS COVER SIMILAR TO ZURN ZN-1400 WITH GAS TIGHT BRONZE PLUG, ROUND SCREWDOWN ACCESS COVER BOX WITH POLISHED SCORiated TOP AND ANCHOR LUGS.
C.O.	ALL OTHER CLEANOUTS	ZURN ZB-1470 FLUSH WITH FLOOR OR WALL AND HAVE COUNTER-SUNK BRASS HEADS.

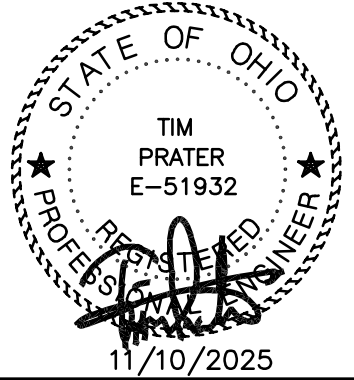
PLUMBING LEGEND			
NOTE: NOT ALL SYMBOLS MAY BE USED			
SYMBOL	DESCRIPTION	SYMBOL	DESCRIPTION
— SAN —	SANITARY (ABV. FLR.)	→	DIRECTION OF FLOW
--- SAN ---	SANITARY (BEL. FLR.)	○	PIPE DOWN
— V —	SANITARY VENT	○	PIPE UP
— W —	WATER SERVICE LINE	—	PIPE BRANCH TOP CONN.
— CW —	DOMESTIC COLD WATER	—	PIPE BRANCH BOTTOM CONN.
— HW —	DOMESTIC HOT WATER (110°F. & ABOVE)	○	P-TRAP (PLAN VIEW)
— HWR —	DOMESTIC HOT WATER RETURN	—	WALL OR EXPOSED CLEANOUT
—	BALL VALVE	—	FLOOR OR GRADE CLEANOUT
—	COMB. BALANCE/SHUTOFF VALVE	—	VENT-THRU-ROOF
—	CHECK VALVE	—	FLOOR DRAIN
—	PIPE UNION	—	CONNECT TO EXISTING

PLUMBING ABBREVIATIONS			
ABV.	ABOVE	GEN.	GENERAL
A.F.F.	ABOVE FINISHED FLOOR	H.B.	HOSE BIBB
APPROX.	APPROXIMATELY	LAV.	LAVATORY
BEL.	BELOW	MFR.	MANUFACTURER
CLG.	CEILING	MECH.	MECHANICAL
CONC.	CONCRETE	PLBG.	PLUMBING
CO.	CLEAN OUT	REQD.	REQUIRED
CONN.	CONNECT	RM.	ROOM
CONTR.	CONTRACTOR	THERM.	THERMOMETER
DTL.	DETAIL	T.P.	TRAP PRIMER
DN.	DOWN	TYP.	TYPICAL
ELEC.	ELECTRICAL	UR.	URINAL
EX.	EXISTING	VAC.	VACUUM
FLR.	FLOOR	V.T.R.	VENT THRU ROOF
F.D.	FLOOR DRAIN	W/	WITH
FURN.	FURNISH	WC	WATER CLOSET
F.V.	FLUSH VALVE		



4420 COOPER RD, SUITE 200
CINCINNATI, OH 45242

SEALS



REVISIONS

BY	DATE	REVISION
	10-23-2025	PROGRESS SET
	10-31-2025	100% REVIEW SET
	11-21-2025	BID/PERMIT SET
	12-08-2025	ADDENDUM 1

DRAWING TITLE & PROJECT NAME

PLUMBING DETAILS
SUNBURY OHIO
JR SMITH PARK PAVILLION
JR SMITH PARK PAVILLION

DRAWN BY	PEA
CHECKED BY	PEA
DATE	07/30/2025
PROJECT NO.	41545
PROJECT STATUS	TBD
DRAWING NO.	P201

P201-25106.DWG

PRATER
Engineering Associates, Inc.

6130 Wilcox Road
Dublin, Ohio 43016

(614) 766 4896
praterengineering.com

DESIGNED BY R. MILLER	DRAWN BY R. MILLER	CHECKED BY C. ANDERSON	JOB NUM. 25106
--------------------------	-----------------------	---------------------------	-------------------