

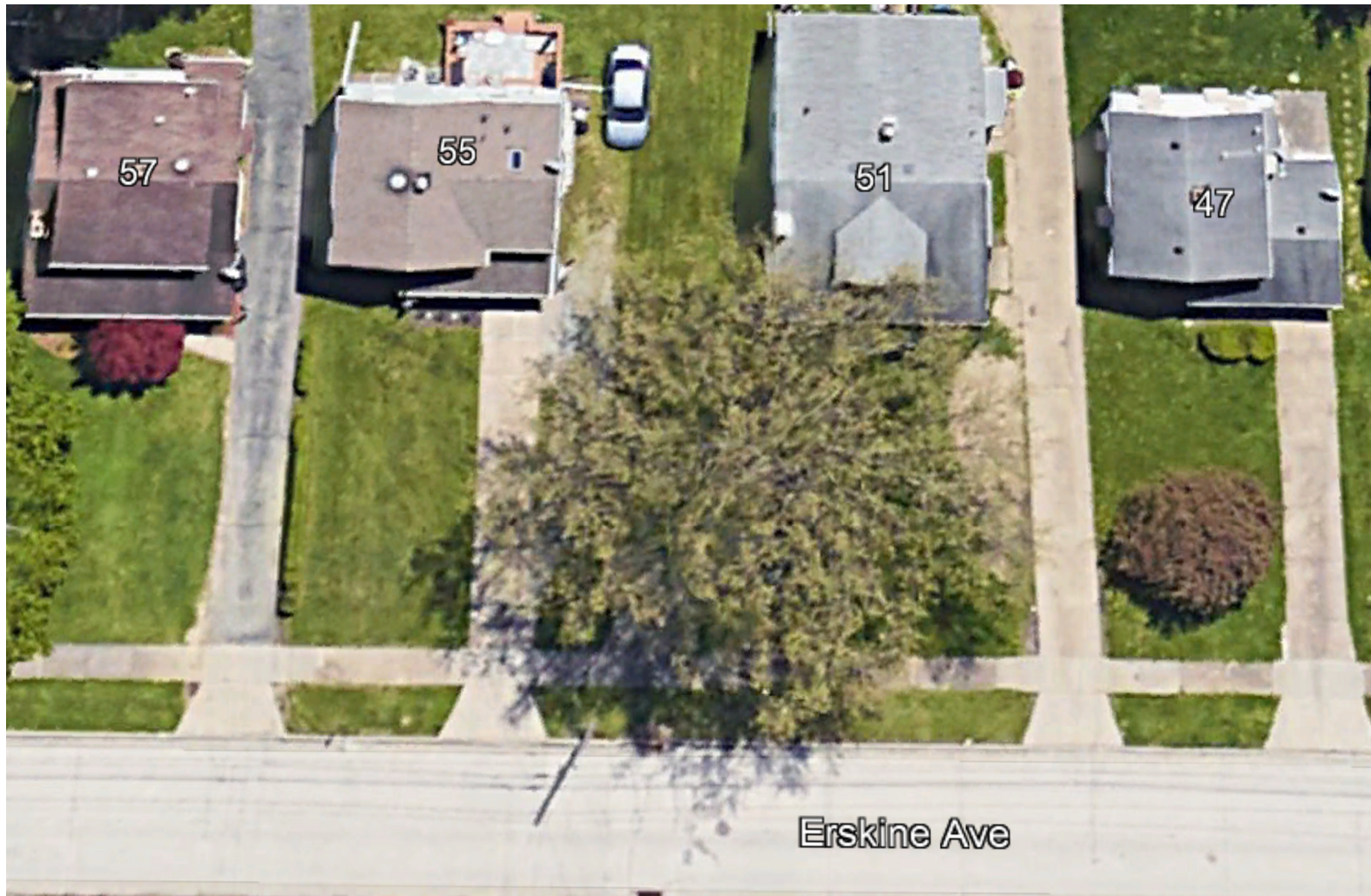
Coring Report

Erskine Ave. Crossing Improvements

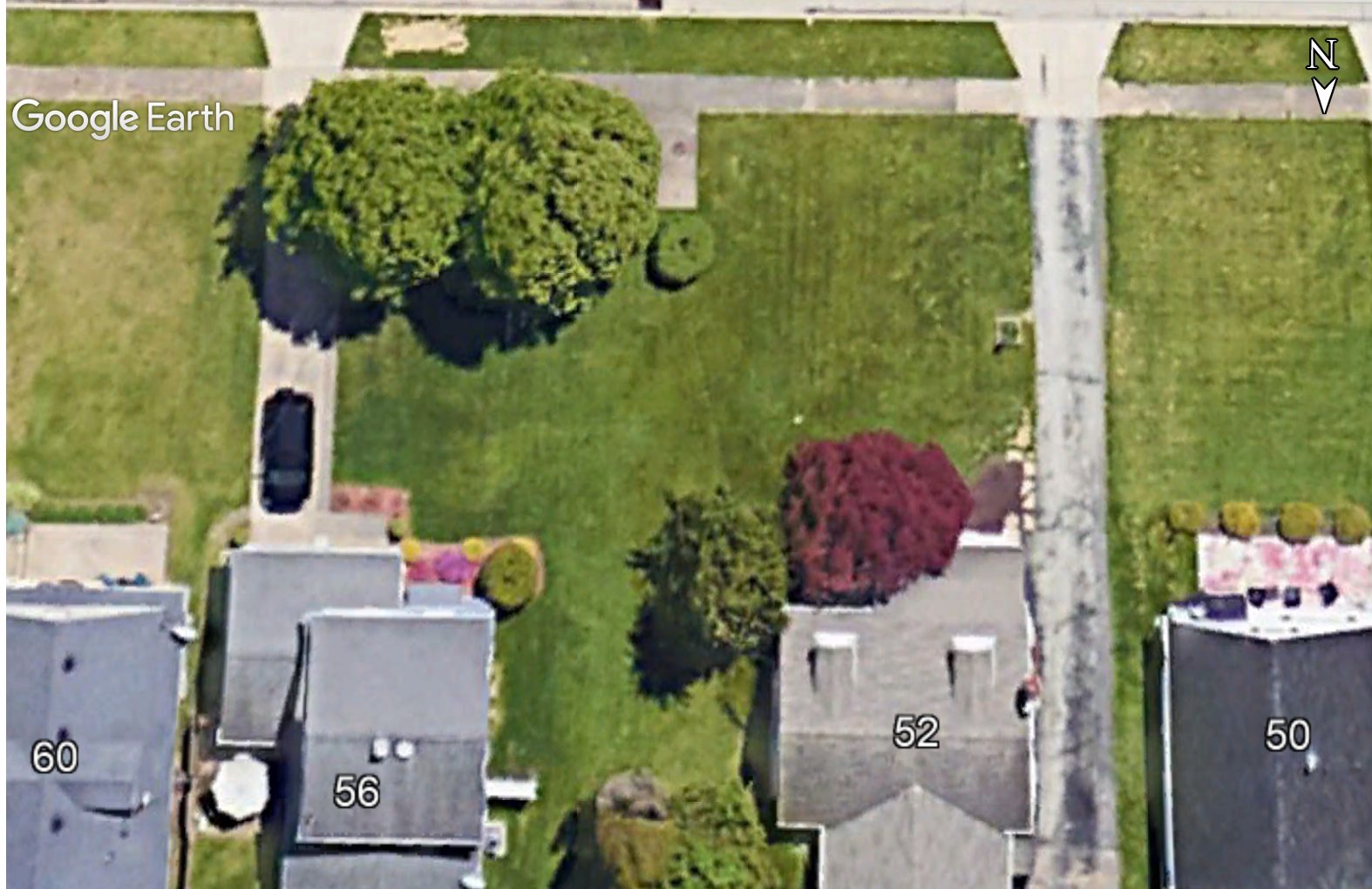
PREPARED FOR
ABC Water and Stormwater District

Verdantas Project No. 39498
February 13, 2026





Erskine Ave



Google Earth

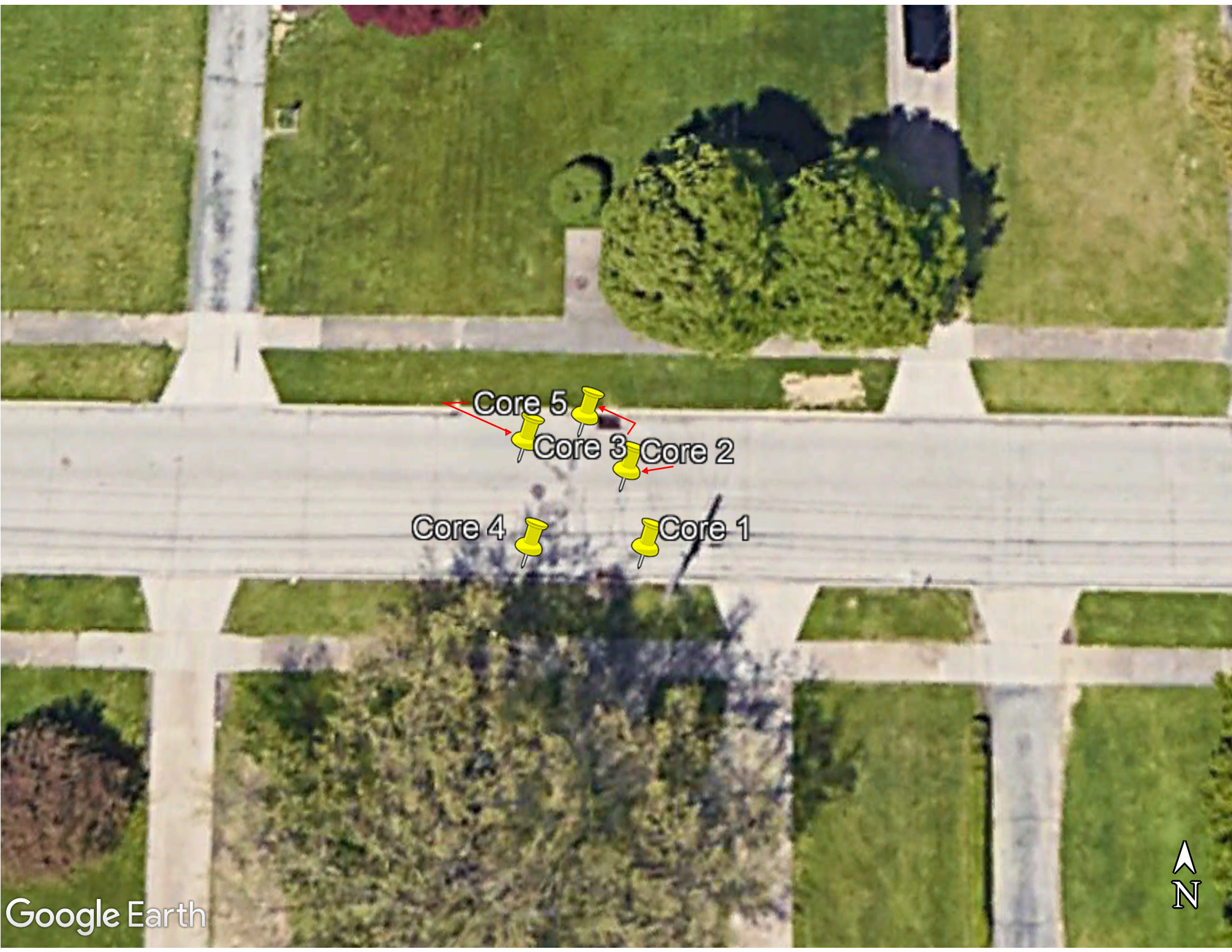


60

56

52

50



Core 5
Core 3
Core 2
Core 4
Core 1



Pavement Coring Report

Project Name: Erskine Crossing Improvements
Project Number: '39498
Project Owner: ABC Sewer and Water
Location: Erskine Rd.,
Date: 02/13/26

Prime Contractor: ----
Paving Contractor: ----
Core Diameter: 4"
Type: Thickness ___ Exploratory X
Technician: Scott Pirc

CORE #1



CORE LOCATION



CORE OPENING



CORE SAMPLE

See core log page for actual thickness of concrete layers.

No base material.
Core taken over concrete culvert.

BASE MATERIAL

Pavement Coring Report

Project Name: Erskine Crossing Improvements
Project Number: '39498
Project Owner: ABC Sewer and Water
Location: Erskine Rd.,
Date: 02/13/26

Prime Contractor: ----
Paving Contractor: ----
Core Diameter: 4"
Type: Thickness ___ Exploratory X
Technician: Scott Pirc

CORE #2



CORE LOCATION



CORE OPENING



CORE SAMPLE

See core log page for actual thickness of concrete layers.

No base material.
Core taken over concrete culvert.

BASE MATERIAL

Pavement Coring Report

Project Name: Erskine Crossing Improvements
Project Number: '39498
Project Owner: ABC Sewer and Water
Location: Erskine Rd.,
Date: 02/13/26

Prime Contractor: ----
Paving Contractor: ----
Core Diameter: 4"
Type: Thickness ___ Exploratory X
Technician: Scott Pirc

CORE #3



CORE LOCATION



CORE OPENING



CORE SAMPLE

See core log page for actual thickness of concrete layers.
See log for actual thickness of concrete layers.

No base material.
Core taken over concrete culvert.

BASE MATERIAL



Pavement Coring Report

Project Name: Erskine Crossing Improvements
Project Number: '39498 **Prime Contractor:** ----
Project Owner: ABC Sewer and Water **Paving Contractor:** ----
Location: Erskine Rd., **Core Diameter:** 4"
Date: 02/13/26 **Type:** Thickness ___ Exploratory X
Technician: Scott Pirc

Core #	Location	Cored Material Description	Actual Material Thickness In Inches	Plan Depth	Condition/Type of Subgrade -Aggregate Size -Remarks
4	3' 4" west of San. MH center, 2'7" from FOC South See attached map	Concrete	5.0	N/A	1" max aggregate - limestone
		Concrete	9.0	"	1" max aggregate - limestone
				"	
				Sub-total cored	14.0
5	3' 11" west of San. MH center, 3'8" from FOC North See attached map	Concrete	11.0	N/A	1" max aggregate - limestone
				Sub-total cored	11.0
		Total cored	25.0		

Pavement Coring Report

Project Name: Erskine Crossing Improvements
Project Number: '39498
Project Owner: ABC Sewer and Water
Location: Erskine Rd.,
Date: 02/13/26
Prime Contractor: ---
Paving Contractor: ---
Core Diameter: 4"
Type: Thickness ___ Exploratory X
Technician: Scott Pirc

CORE #4



CORE LOCATION



CORE OPENING



CORE SAMPLE

See core log page for actual thickness of concrete layers.

N/A

Core bit stuck in concrete. Hammered bit out of core. Drilled through pavement with 3/4" hammer drill bit and measured to bottom of pavement.

BASE MATERIAL

Pavement Coring Report

Project Name: Erskine Crossing Improvements
Project Number: '39498
Project Owner: ABC Sewer and Water
Location: Erskine Rd.,
Date: 02/13/26

Prime Contractor: ---
Paving Contractor: ---
Core Diameter: 4"
Type: Thickness ___ Exploratory X
Technician: Scott Pirc

CORE #5



CORE LOCATION



CORE OPENING



CORE SAMPLE



BASE MATERIAL