

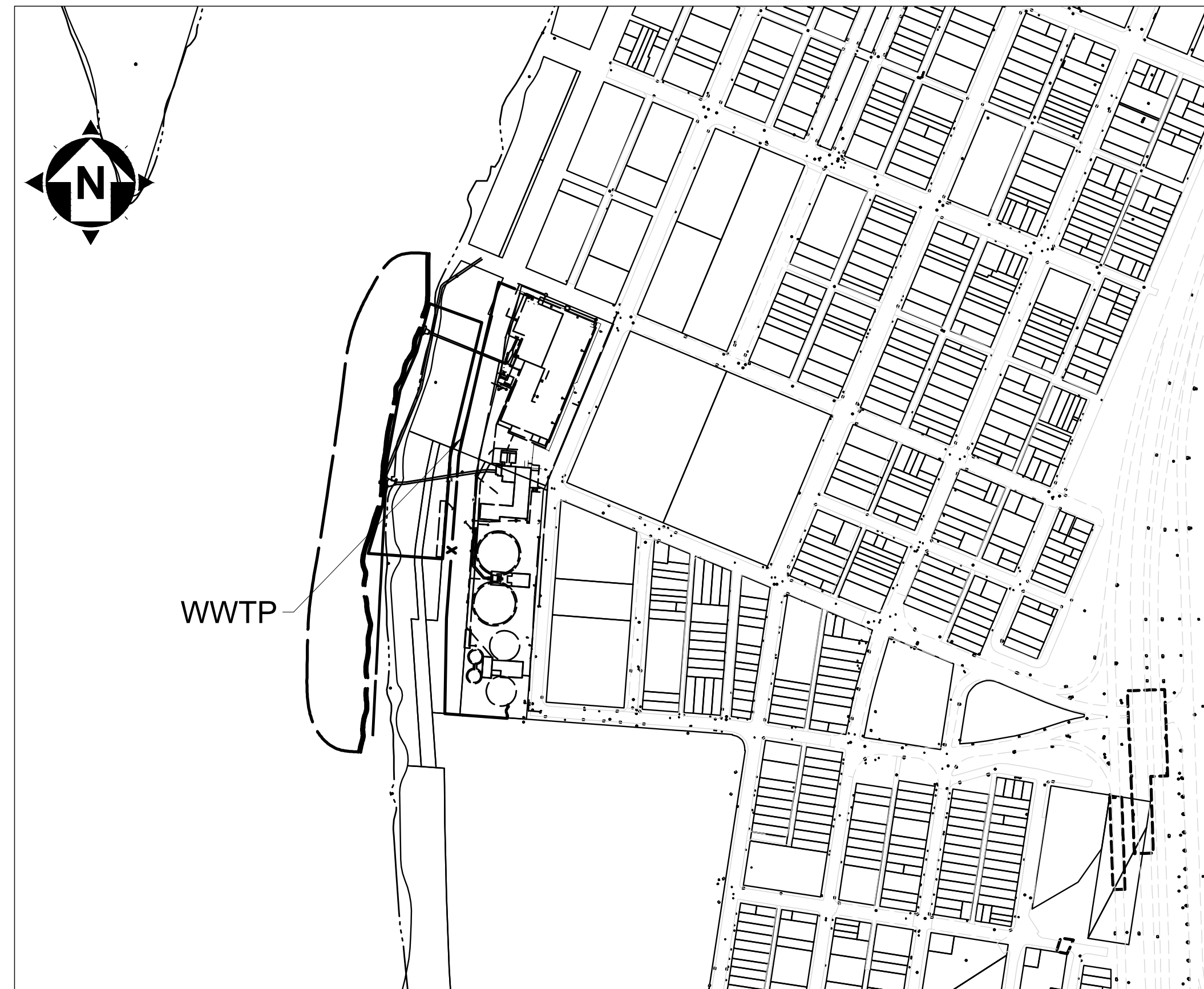
# WASTEWATER TREATMENT PLANT SLUDGE DEWATERING IMPROVEMENTS, SCREW PRESS

## CITY OF WHEELING, WV, WATER POLLUTION CONTROL DIVISION GATE 1 - SLUDGE DEWATERING EQUIPMENT PROCUREMENT AMENDMENT No. 4 BOND PACKAGE CONTRACT 38009

MAY 2026



UTILITY COMPANIES		
NOTE: UNDERGROUND UTILITIES SHOWN ON THIS PLAN ARE BASED ON FIELD MARKINGS (BY OTHERS) AND AVAILABLE RECORDS, AND AS SUCH, SHOULD BE FIELD VERIFIED PRIOR TO COMMENCEMENT OF ANY CONSTRUCTION ACTIVITY - CALL BEFORE YOU DIG!		
<b>SEWERS:</b> WATER POLLUTION CONTROL DIVISION 2516 MAIN STREET WHEELING, WV 26003 (304) 234-3874 BOB WEISNER	<b>WATER:</b> WHEELING WATER DEPT. 9 ARMORY DRIVE WHEELING, WV 26003 (304) 234-3849 CHRIS BEISWANGER	<b>ELECTRIC:</b> AEP 1-800-852-6942 CHRISTINA HARPER (304) 234-3106
<b>STREET LIGHTS:</b> APPALACHIAN POWER (304) 234-3106	<b>GAS:</b> MOUNTAINEER GAS 19TH AND WOOD STREET WHEELING, WV 26003 1-888-420-4427 x 85202 RON TROWBRIDGE (304) 276-2520	<b>GAS:</b> TC ENERGY CLAYTON COSS (724) 809-3239
<b>TELE-COMMUNICATIONS</b> FRONTIER 995 MT DECHANTAL ROAD WHEELING, WV 26003 (304) 234-6392 KEITH WESTLAKE (304) 559-9020	<b>TELE-COMMUNICATIONS:</b> COMCAST CABLE COMMUNICATIONS INC. GENE HELMS (412) 439-3886	



LOCATION MAP  
SCALE: 1" = 300'

**OWNER**  
WATER POLLUTION CONTROL DIVISION  
2516 MAIN STREET  
WHEELING, WV 26003  
PHONE: (304) 234-3874

**ENGINEER**  
VERDANTAS  
2001 MAIN STREET, SUITE 600  
WHEELING, WV 26003  
PHONE: (304) 232-2784

**CONSTRUCTION PLAN APPROVALS:**

*RLH* *5-8-2026*

ROBERT HERRON, CITY MANAGER DATE

APPROVAL OF THESE PLANS DOES NOT CONSTITUTE ASSURANCE TO OPERATE AS INTENDED. THE REVIEWER DOES NOT ACCEPT RESPONSIBILITY FOR THE INTEGRITY OF THE PLANS.



**DESIGN ENGINEER:**

*Dan Barr*

DAN BARR, WV P.E. NO. 254451  
5/6/2026  
DATE

DANIEL E. BARR  
REGISTERED  
25451  
STATE OF WEST VIRGINIA  
PROFESSIONAL ENGINEER

DATE	REVISION	NO	ISSUE FOR:	BID SET	ISSUE DATE:	SCALE:	DESIGNED BY:	DRAWN BY:	CHECKED BY:
				5/10/2026	AS NOTED	MIS	RLM	MIS	

WASTEWATER TREATMENT PLANT  
SLUDGE DEWATERING IMPROVEMENTS  
SOLIDS HANDLING BUILDING  
EQUIPMENT PROCUREMENT  
COVER SHEET  
PROCUREMENT

PROJECT NO.	38009
DISCIPLINE	GENERAL
SHEET NAME	00G-01
SHEET	OF
1	10

**ABBREVIATIONS**

**VALVE OPERATOR ID:**

- CH = CHAIN
- EM = ELECTRIC MOTOR
- ES = EXTENSION STEM
- FB = FLOOR BOX
- FS = FLOOR STAND
- GE = GEAR
- HC = HYDRAULIC CYLINDER
- HW = HANDWHEEL
- LE = LEVER
- LW = "L" WRENCH
- ON = OPERATING NUT
- PC = PNEUMATIC CYLINDER
- PD = PNEUMATIC DIAPHRAGM
- TW = "T" WRENCH
- VB = VALVE BOX

**PIPE END JOINT ID:**

- BE = BELL
- CM = COMPRESSION
- FL = FLANGED
- GR = GROOVED
- LU = LUG
- MJ = MECHANICAL JOINT
- NPT = NATIONAL PIPE THREAD
- RJ = RESTRAINED JOINT
- PE = PLAIN END
- S = SOLDERED
- SJ = SLIP JOINT (PUSH ON)
- SW = SOLVENT WELDED
- TH = THREADED
- W = WELDED

**EQUIPMENT ID:**

- AC = AIR COMPRESSOR
- AER = AERATOR
- B = BLOWER
- BFP = BELT FILTER PRESS
- CLS = CLASSIFIER
- C = COMMUNITOR
- OMP = COMPACTOR
- CFD = CHEMICAL FEEDER
- CONV = CONVEYOR
- CNT = CENTRIFUGE
- CC = CALIBRATION CYLINDER
- CFD = CHEMICAL FEEDER
- CP = CONTROL PANEL
- CR = CRANE
- D = DECANTER
- DR = DRIVE
- DFL = DISC FILTER
- F = FAN
- FL = FILTER
- FM = FLOW METER
- GBT = GRAVITY BELT THICKENER
- GR = GRINDER
- GEN = GENERATOR
- HB = HOSE BIB
- M = MOTOR
- MX = MIXER
- P = PUMP
- PS = PUMP STATION
- SMP = SAMPLER
- SCR = SCREEN

**PIPE MATERIAL ID:**

- BR = BRASS
- BS = BLACK STEEL
- BZ = BRONZE
- CI = GRAY CAST IRON
- CU = COPPER
- CS = CAST IRON
- CT = CARBON STEEL TUBING
- DIP = DUCTILE IRON PIPE
- DR = DIAMETER RATIO
- FRP = FIBERGLASS REINFORCED PLASTIC
- GS = GALVANIZED STEEL
- HDPE = HIGH-DENSITY POLYETHYLENE PIPE
- PVC = POLYVINYL CHLORIDE PIPE
- SS = STAINLESS STEEL
- STL = STEEL PIPE
- SDR = STANDARD DIAMETER RATIO
- SCH = SCHEDULE

**GATE ABBREVIATIONS:**

- BG - BULKHEAD GATE
- SG - SLIDE GATE
- SP - STOP PLATE
- SL - STOP LOG
- ALUM - ALUMINUM
- SS - STAINLESS STEEL
- CI - CAST IRON
- POLY - POLYMER
- B/C - BOTTOM OF CHANNEL
- T/C - TOP OF CHANNEL
- A - HEIGHT
- B - WIDTH


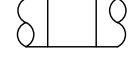
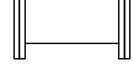
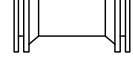

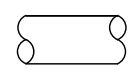

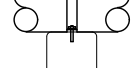

**OTHER:**

- ADDL = ADDITIONAL
- AGG = AGGREGATE
- ALUM. = ALUMINUM
- BTWN = BETWEEN
- C/L = CWINTERLINE
- CLR = CLEAR
- COMM = COMMUNICATION(S)
- CONC = CONCRETE
- CONT = CONTINUOUS
- DWL = DOWEL(S)
- EF = EACH FACE
- EL = ELEVATION
- EMBED = EMBEDMENT
- EW = EACH WAY
- EX = EXISTING
- FF = FINISH FLOOR
- FG = FINISH GRADE
- FND = FOUNDATION
- GALV = GALVANIZED
- HORIZ = HORIZONTAL
- HP = HIGH POINT
- LLV = LONG LEG VERTICAL
- LP = LOW POINT
- MAX = MAXIMUM
- MFR = MANUFACTURER
- MIN = MINIMUM
- REC = RECORD
- REF = REFERENCE
- REINF = REINFORCING
- STRC = STRUCTURE
- T/ = TOP OF
- TYP = TYPICAL
- UNO = UNLESS NOTED OTHERWISE
- VERT = VERTICAL

**VALVE ID:**

- AC = AIR CHECK VALVE
- AN = ANGLE VALVE
- AR = AIR RELEASE VALVE
- AV = AIR & VACUUM VALVE
- BA = BALL VALVE
- BFLY = BUTTERFLY VALVE
- BK = BACKPRESSURE VALVE
- BP = BACKFLOW PREVENTER
- CV = CHECK VALVE
- CO = CONE VALVE
- GV = GATE VALVE
- GL = GLOBE VALVE
- KG = KNIFE GATE VALVE
- KN = KNIFE VALVE
- MV = MUD VALVE
- PD = PLUG DRAIN VALVE
- PF = PRESSURE RELIEF
- PG = PRESSURE REGULATOR
- PI = PINCH VALVE
- PV = PLUG VALVE
- PRV = PRESSURE REDUCING VALVE
- PT = PRESSURE TEMPERATURE RELIEF
- RF = RATE-OF-FLOW CONTROLLER
- SV = SOLENOID VALVE
- SU = SURGE VALVE
- TE = TELESCOPING VALVE
- TM = TEMPERATURE CONTROL VALVE

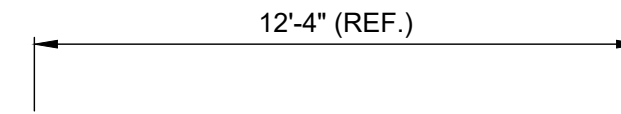
**MISC. PIPE SYMBOLOGY**

-  PIPE TO BE PAINTED
-  WELDED PIPING
-  FLG PIPING
-  MJ PIPING
-  FLEXIBLE CONNECTOR
-  PIPE THROUGH SECTION
-  PIPE CONTINUOUS BREAK
-  PIPE BASE SUPPORT
-  CONCRETE PIPE SUPPORT

**GENERAL SYMBOLOGY NOTES:**

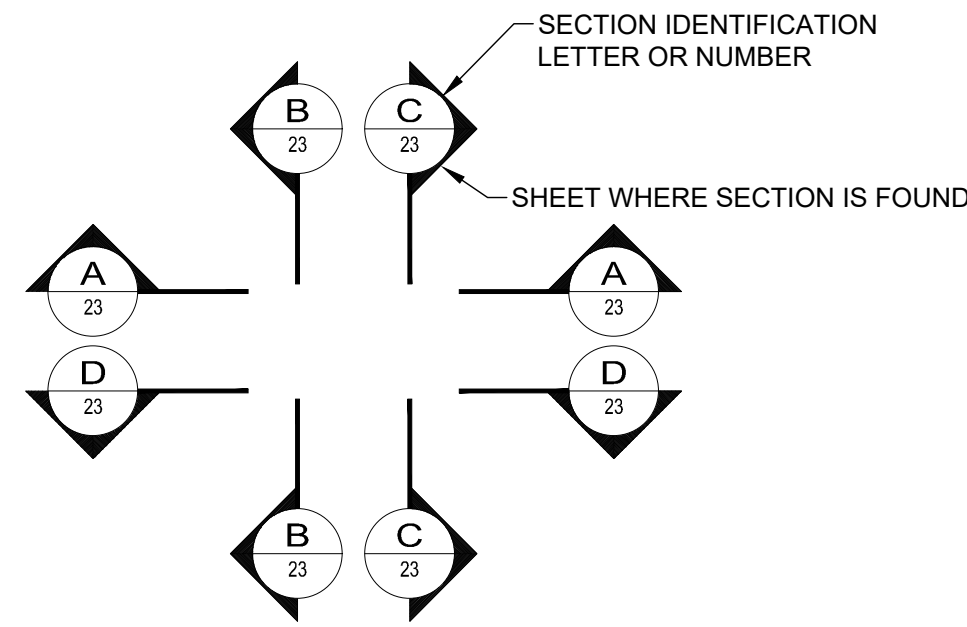
1. THIS IS A STANDARD SHEET SHOWING COMMONLY USED SYMBOLOGY.
2. ALL SYMBOLS ARE NOT NECESSARILY USED ON THIS PROJECT.
3. SCREENING OR SHADING OF WORK IS USED TO INDICATE EXISTING COMPONENTS OR TO DE-EMPHASIZE NEW IMPROVEMENTS SO AS TO HIGHLIGHT SPECIFIC TRADE WORK. REFER TO CONTEXT OF EACH SHEET FOR USAGE.
4. SYMBOLOGY OR DIAGRAMMATICAL LEGENDS MAY BE SHOWN ON INDIVIDUAL SHEETS FOR SCHEDULES, DIAGRAMS, DETAILS, SCHEMATICS OR EQUIPMENT.

**REFERENCE DIMENSION:**

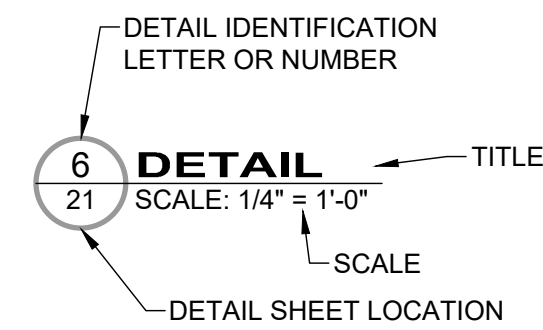


REFERENCE DIMENSIONS ARE GIVEN FOR INFORMATION ONLY. THEY ARE CALCULATED DIMENSIONS NOT INTENDED TO BE USED WITHOUT FIELD VERIFICATION AND ARE USEFUL IN SHOWING INTENDED DESIGN.

**MAJOR SECTION CUT CONVENTIONS:**



**DETAIL REFERENCES:**



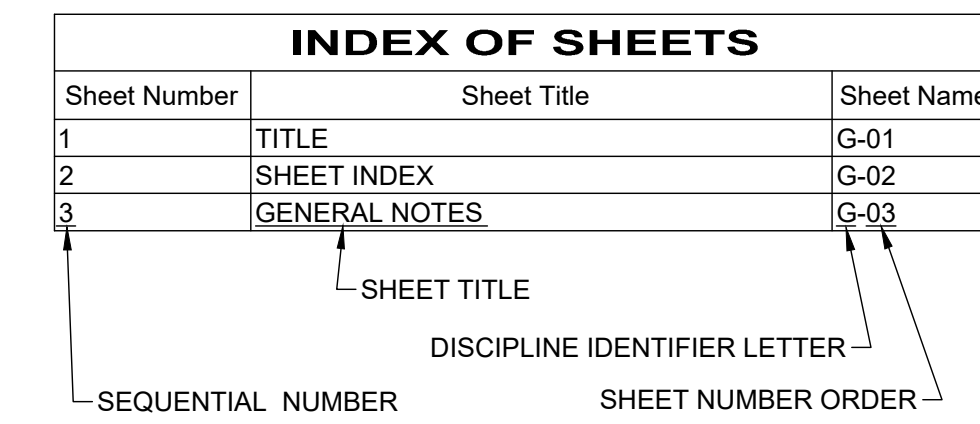
**SERIES INFORMATION:**

- GENERAL - 00 SERIES
- SOLIDS HANDLING BUILDING - 10 SERIES
- ELECTRICAL - E SERIES
- MECHANICAL - M SERIES
- INSTRUMENTATION - I SERIES
- STANDARD DETAILS - SD SERIES

**DISCIPLINE INFORMATION:**

- |            |                 |
|------------|-----------------|
| IDENTIFIER | DISCIPLINE      |
| G          | GENERAL         |
| D          | PROCESS         |
| A          | ARCHITECTURAL   |
| S          | STRUCTURAL      |
| M          | MECHANICAL      |
| E          | ELECTRICAL      |
| I          | INSTRUMENTATION |

**INDEX EXPLANATION:**



Sheet Number	Sheet Title	SHEET NAME
GENERAL - 00 SERIES: GENERAL		
1	COVER SHEET PROCUREMENT	00G-01
2	INDEX AND SYMBOLS	00D-02
3	PROCESS FLOW DIAGRAM	00G-03
4	WORK LOCATION MAP	00G-04
SOLIDS HANDLING BUILDING - 10 SERIES: STRUCTURAL		
5	SECOND FLOOR PLAN AT EL. 672.50 EQUIPMENT FOOTPRINT	10S-01
SOLIDS HANDLING BUILDING - 10 SERIES: PROCESS		
6	SECOND FLOOR PLAN AT EL. 672.50 PROPOSED DEWATERING EQUIPMENT	10D-01
7	DEWATERING EQUIPMENT - SECTIONS A & B	10D-02
8	FIRST FLOOR AT EL. 658.25 PROPOSED POLYMER SKID SYSTEM	10D-03
9	BASEMENT PLAN AT EL. 644.50 SLUDGE FEED PUMPS P11 & P12	10D-04
INSTRUMENTATION		
10	SCREW PRESS SYSTEM ARCHITECTURAL PLAN	10I-001

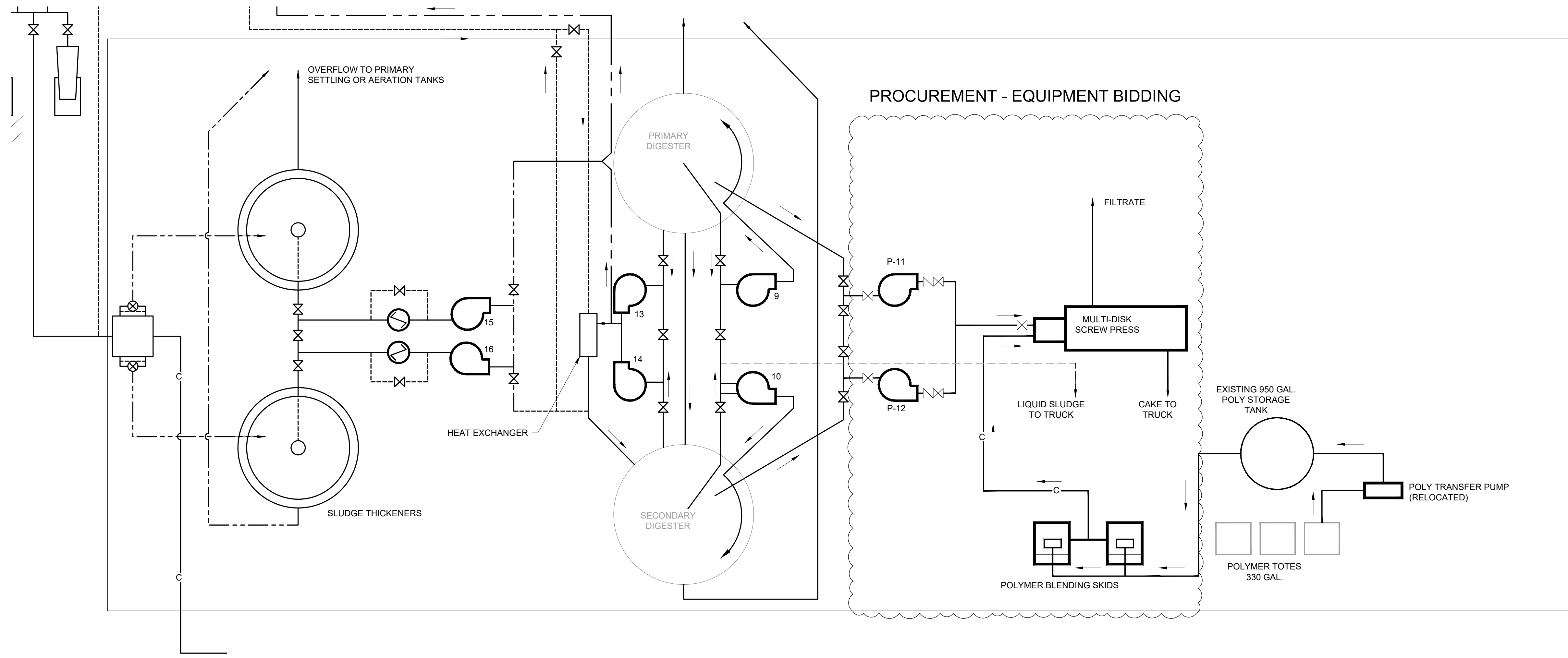


DATE					
REVISION					
NO					
BID SET	5/10/2026	#####	MIS	RLM	MIS
ISSUE FOR:	ISSUE DATE:	SCALE:	DESIGNED BY:	DRAWN BY:	CHECKED BY:

**WASTEWATER TREATMENT PLANT  
 SLUDGE DEWATERING IMPROVEMENTS  
 SOLIDS HANDLING BUILDING**  
**GENERAL - 00 SERIES  
 INDEX AND SYMBOLS**

PROJECT NO.	<b>38009</b>
DISCIPLINE	<b>GENERAL</b>
SHEET NAME	<b>00D-02</b>
SHEET	OF
<b>2</b>	<b>10</b>

### SLUDGE HANDLING BUILDING

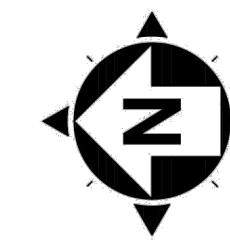


- PROPOSE EQUIPMENT
- SLUDGE
- - - SCUM
- C- CHLORINE / CHEMICAL
- A- AIR
- ⊗ FLOW CONTROL VALVE
- ⊘ CHECK VALVE
- ⊙ PUMP

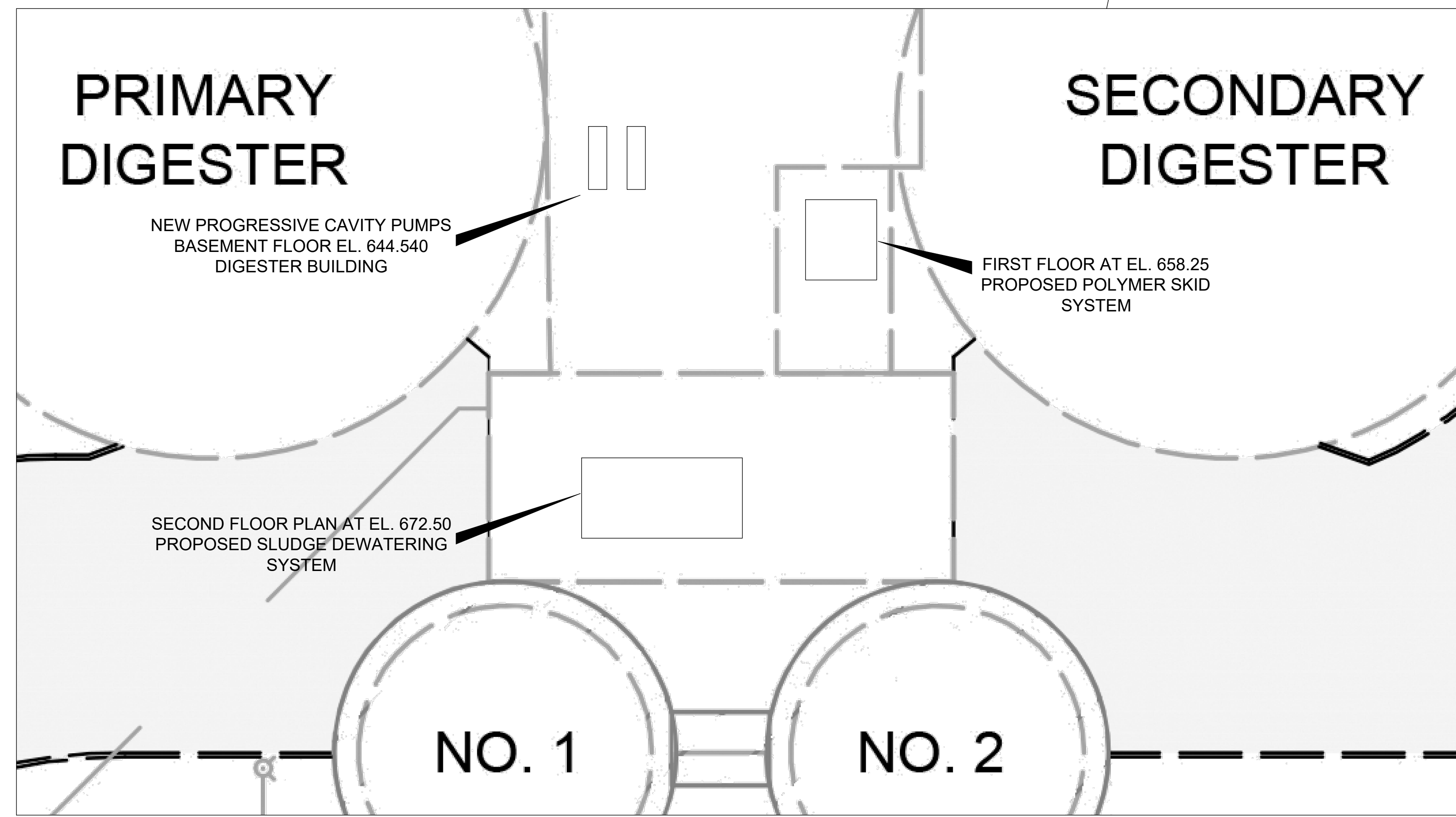
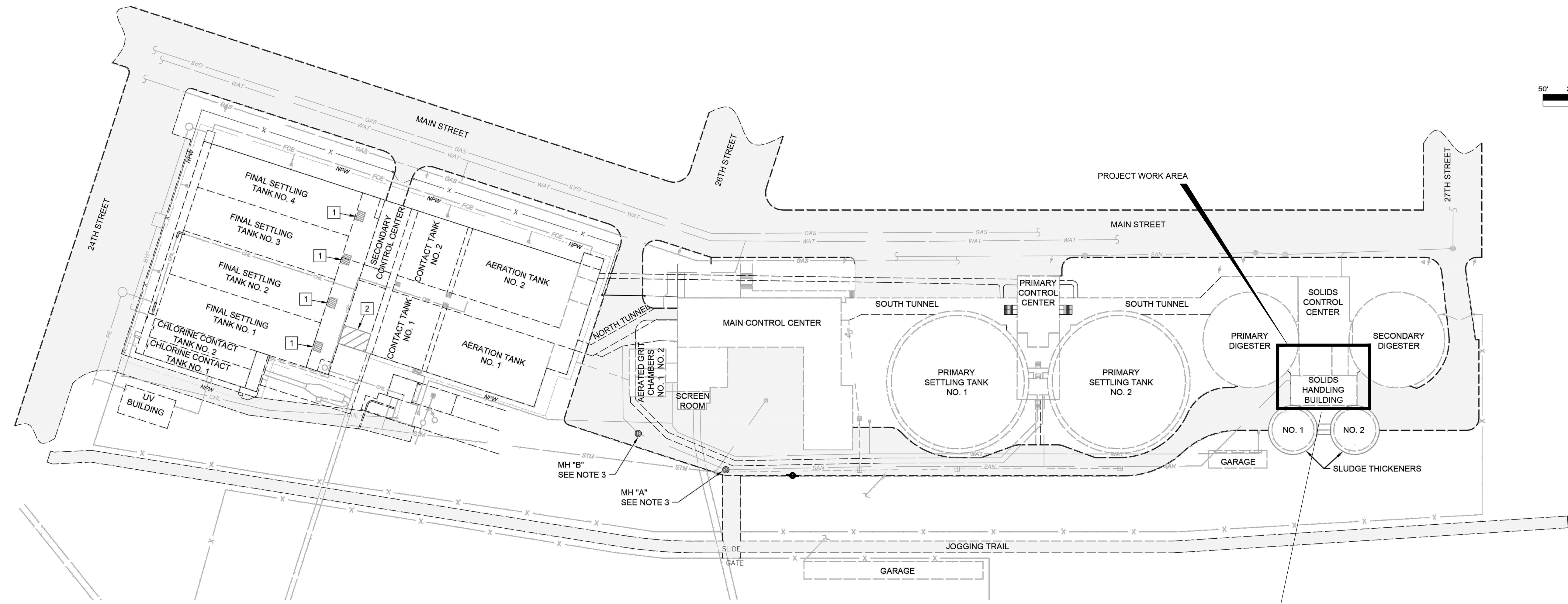
ISSUE FOR:	BID SET NO	REVISION NO	DATE
ISSUE DATE:	5/10/2026		
SCALE:	N/A		
DESIGNED BY:	MIS		
DRAWN BY:	RLM		
CHECKED BY:	MIS		

**WASTEWATER TREATMENT PLANT  
 SLUDGE DEWATERING IMPROVEMENTS  
 SOLIDS HANDLING BUILDING**  
**EQUIPMENT PROCUREMENT  
 PROCESS FLOW DIAGRAM**

PROJECT NO.	38009
DISCIPLINE	GENERAL
SHEET NAME	00G-03
SHEET	3
OF	10



BAR SCALE  
50' 25' 0' 50'  
SCALE: 1"= 50'

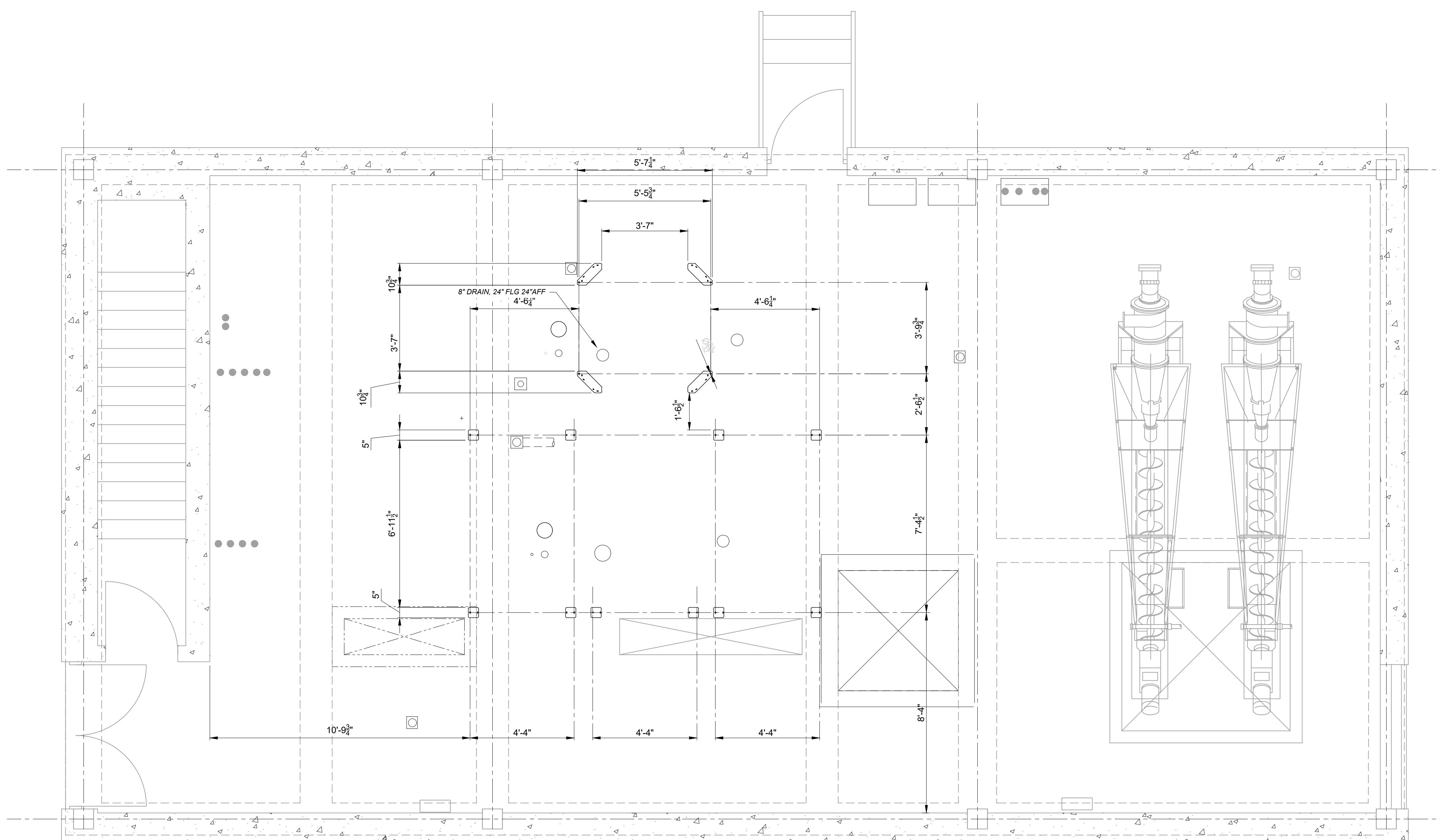
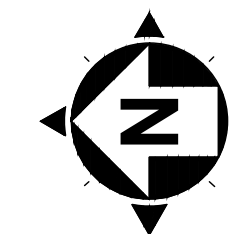


ISSUE FOR:	BID SET	NO	REVISION	DATE
ISSUE DATE:	5/10/2026			
SCALE:	1"=50'			
DESIGNED BY:	MIS			
DRAWN BY:	RLM			
CHECKED BY:	MIS			

**WASTEWATER TREATMENT PLANT  
SLUDGE DEWATERING IMPROVEMENTS  
SOLIDS HANDLING BUILDING**

**GENERAL - 00 SERIES  
WORK LOCATION MAP**

PROJECT NO.	<b>38009</b>
DISCIPLINE	<b>GENERAL</b>
SHEET NAME	<b>00G-04</b>
SHEET	OF
<b>4</b>	<b>10</b>



**SECOND FLOOR PLAN AT EL. 672.50**  
SCALE: 3/8" = 1'-0"

- GENERAL NOTES:
1. THE LOCATION OF THE EXISTING FLOOR OPENINGS ARE BASED ON THE RECORD DRAWING FROM STERNS & WHEELER 1977 WASTE WATER FACILITY PLANS PROJECT. EXACT ACTUAL LOCATIONS, SIZES, DIMENSIONS, ECT. MUST BE FIELD VERIFIED BY THE CONTRACTOR.
  2. DEWATERING SYSTEM WEIGHTS (DESIGN LOADS):  
 - TOTAL DRY WEIGHT: 25,400 LBS.  
 - MAX. TOTAL OPERATING WEIGHTS: 40,000 LBS

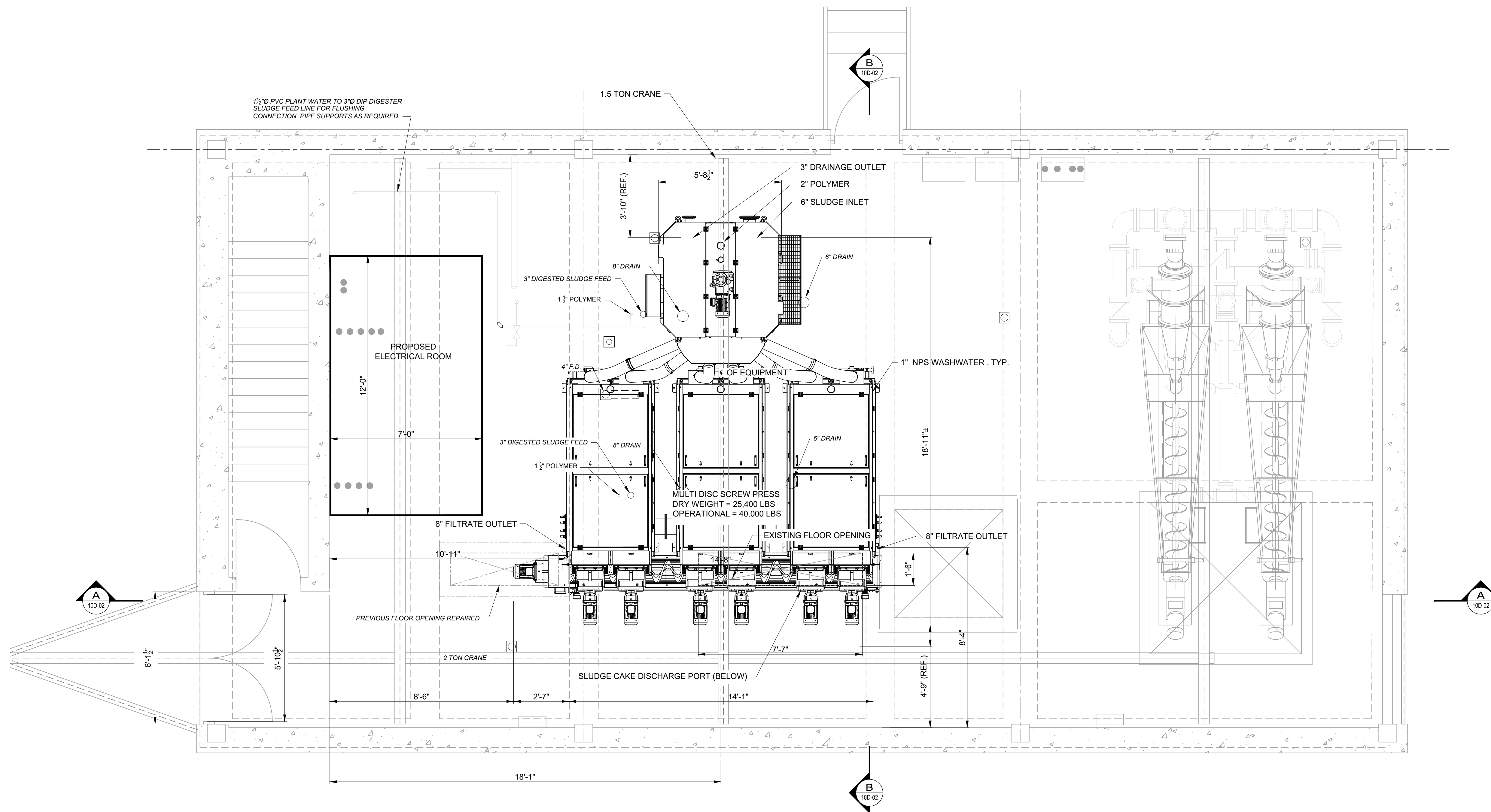
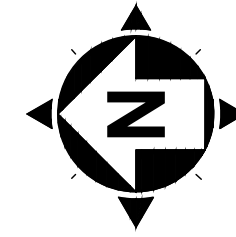


ISSUE FOR:	REVIEW NO	REVISION	DATE
ISSUE DATE: 5/07/2026			
SCALE: #####			
DESIGNED BY: MIS			
DRAWN BY: RLM			
CHECKED BY: MIS			

**WASTEWATER TREATMENT PLANT  
SLUDGE DEWATERING IMPROVEMENTS  
SOLIDS HANDLING BUILDING**

**EQUIPMENT PROCUREMENT  
SECOND FLOOR PLAN AT EL. 672.50  
EQUIPMENT FOOTPRINT**

PROJECT NO.	<b>38009</b>
DISCIPLINE	<b>STRUCTURAL</b>
SHEET NAME	<b>10S-01</b>
SHEET	<b>5</b>
OF	<b>10</b>



**SECOND FLOOR PLAN AT EL. 672.50  
PROPOSED SLUDGE DEWATERING SYSTEM**

SCALE: 3/8" = 1'-0"

NOTE:  
\* DIMENSIONS ARE FOR REFERENCE ONLY. REFER TO EQUIPMENT MANUFACTURER FOR DETAILED DIMENSIONS.



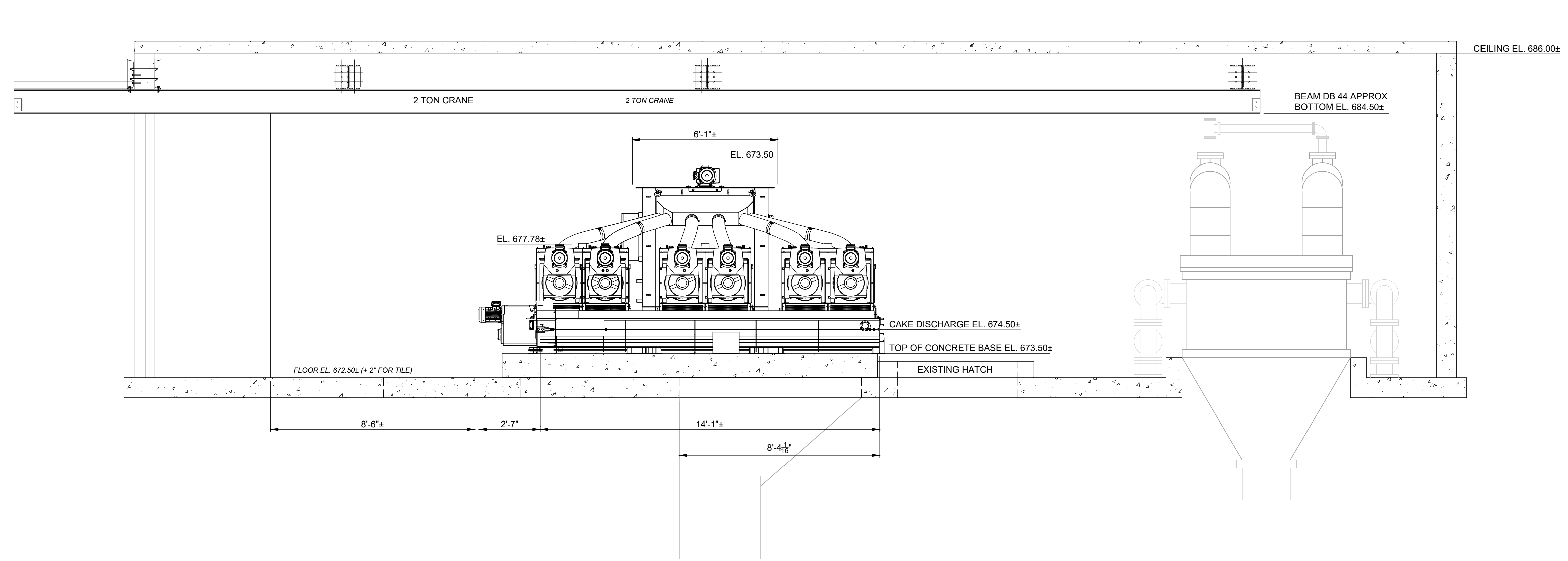
REVISION	NO	DATE

**WASTEWATER TREATMENT PLANT  
SLUDGE DEWATERING IMPROVEMENTS  
SOLIDS HANDLING BUILDING**

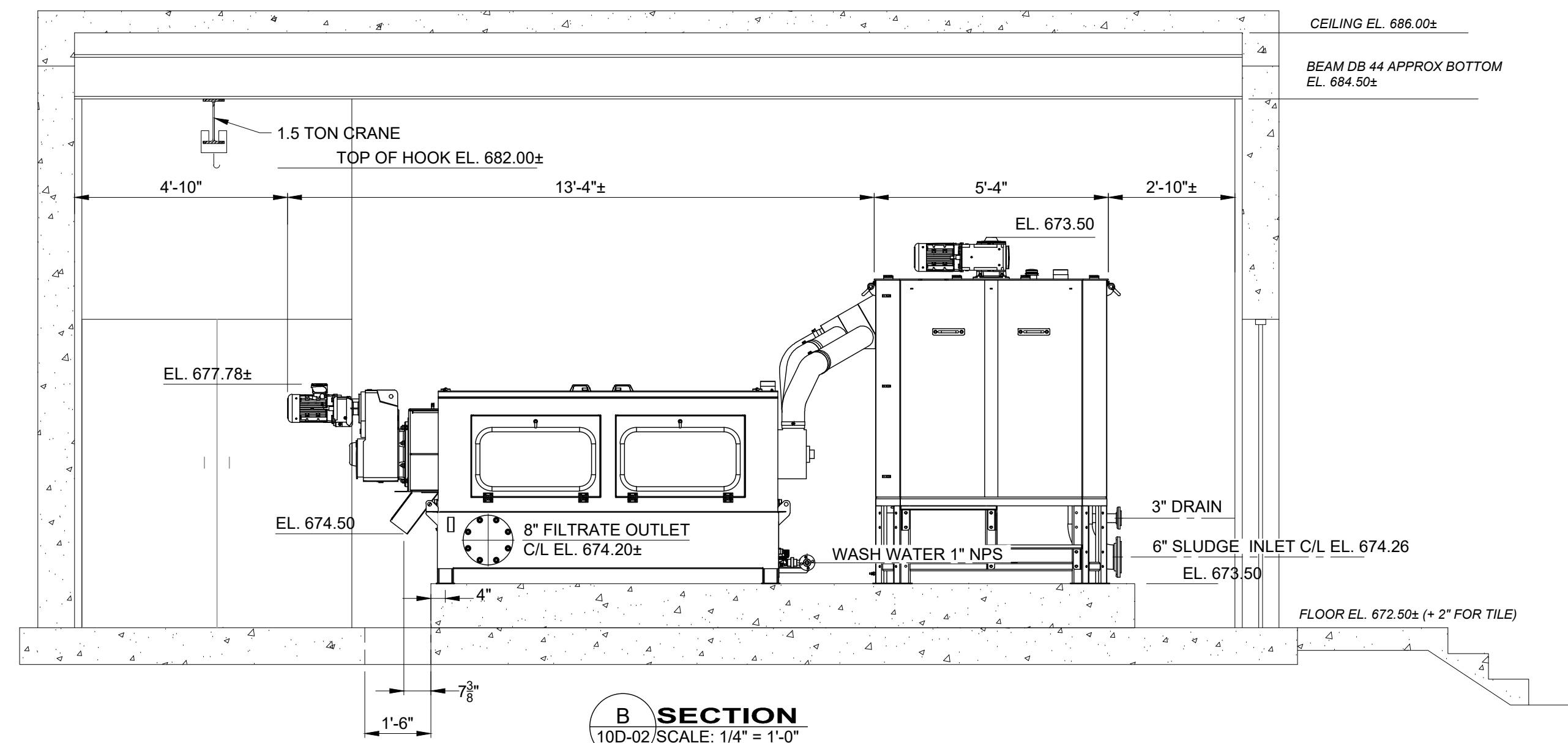
**EQUIPMENT PROCUREMENT  
SECOND FLOOR PLAN AT EL. 672.50  
PROPOSED DEWATERING EQUIPMENT**

PROJECT NO.	<b>38009</b>
DISCIPLINE	<b>PROCESS</b>
SHEET NAME	<b>10D-01</b>
SHEET	<b>6</b>
OF	<b>10</b>

NOTE:  
THE LOCATION OF THE EXISTING FLOOR OPENINGS ARE BASED ON THE RECORD DRAWING FROM STERNS & WHEELER 1977 WASTE WATER FACILITY PLANS PROJECT. EXACT ACTUAL LOCATIONS, SIZES, DIMENSIONS, ECT. MUST BE FIELD VERIFIED BY THE CONTRACTOR.



**A SECTION**  
10D-02 SCALE: 1/4" = 1'-0"



**B SECTION**  
10D-02 SCALE: 1/4" = 1'-0"

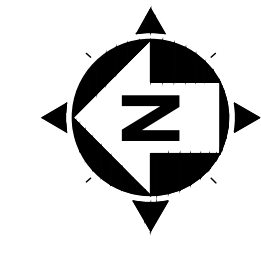


ISSUE FOR:	REVIEW	NO	REVISION	DATE
ISSUE DATE: 5/07/2026	5/07/2026			
SCALE: #/#####	#####			
DESIGNED BY: AEC	AEC			
DRAWN BY: AEC	AEC			
CHECKED BY: AEC	AEC			

**WASTEWATER TREATMENT PLANT  
SLUDGE DEWATERING IMPROVEMENTS  
SOLIDS HANDLING BUILDING**

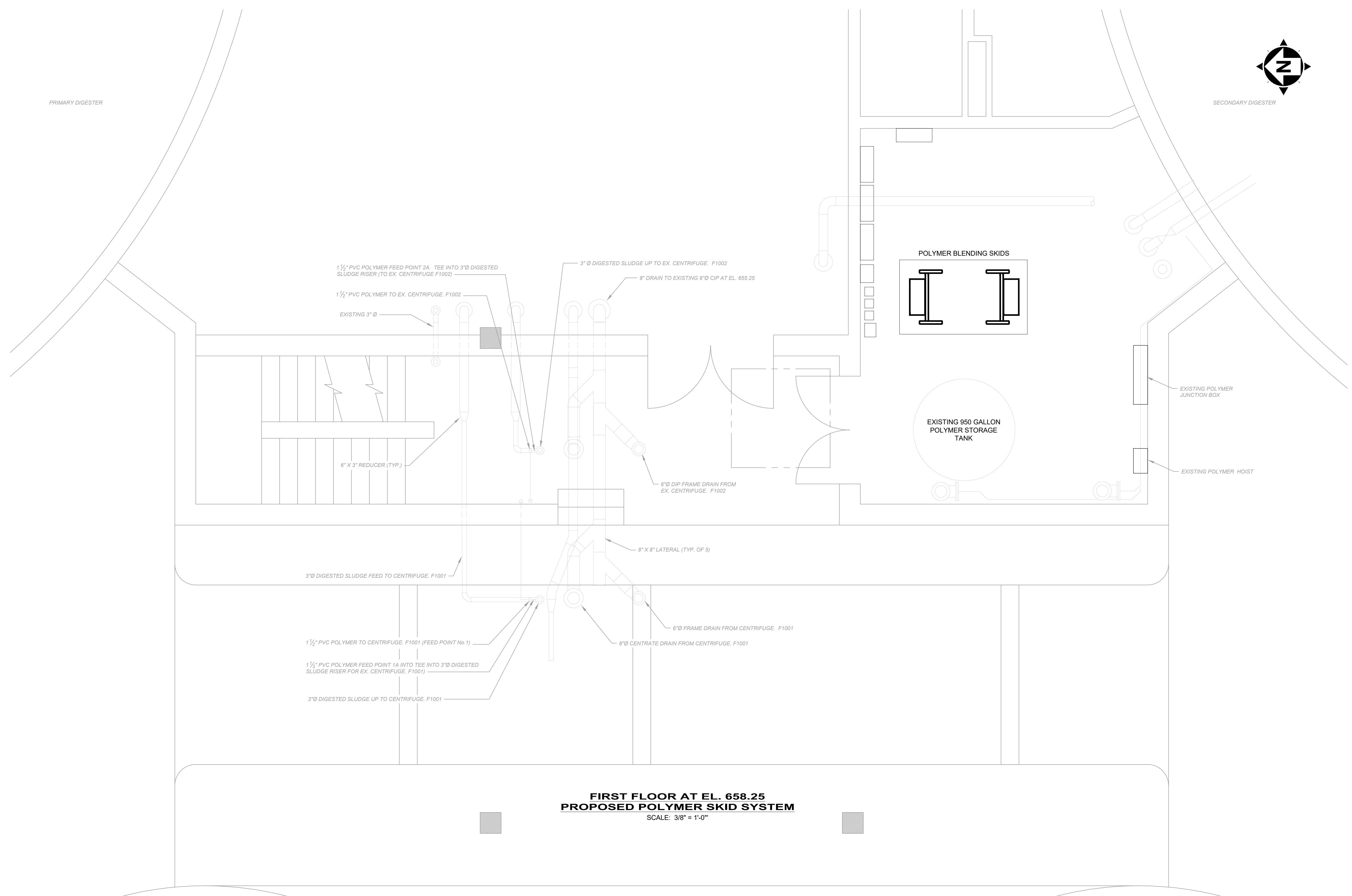
**SOLIDS HANDLING BUILDING - 10 SERIES  
DEWATERING EQUIPMENT - SECTIONS A & B**

PROJECT NO.	38009
DISCIPLINE	PROCESS
SHEET NAME	10D-02
SHEET	OF
7	37



PRIMARY DIGESTER

SECONDARY DIGESTER



**FIRST FLOOR AT EL. 658.25  
PROPOSED POLYMER SKID SYSTEM**  
SCALE: 3/8" = 1'-0"

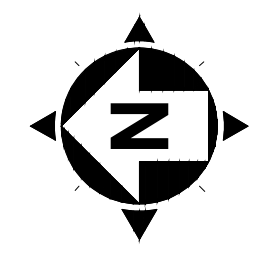
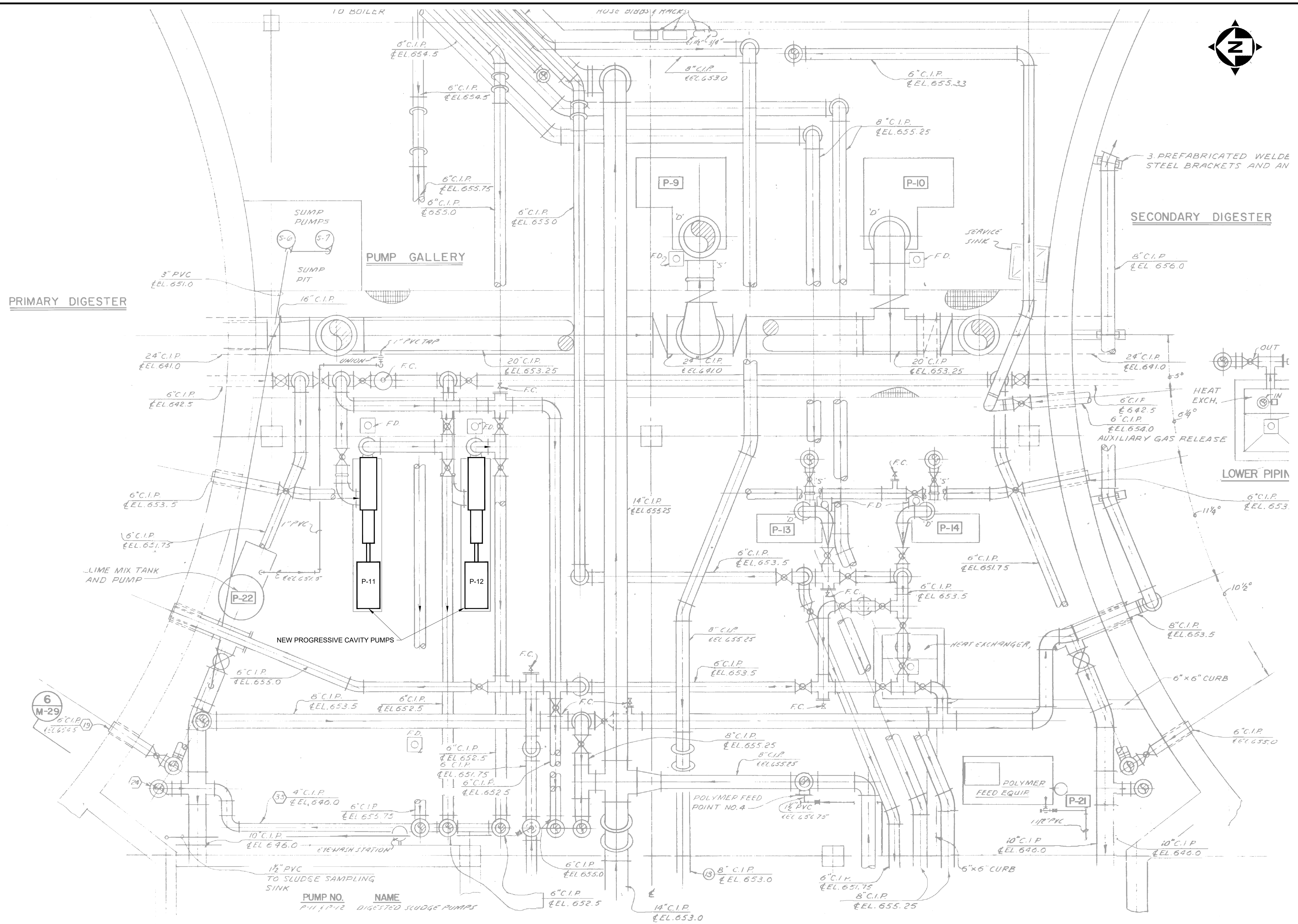
NOTE:  
THE LOCATION OF THE EXISTING FLOOR OPENINGS ARE BASED ON THE RECORD DRAWING FROM STERNS & WHEELER 1977 WASTE WATER FACILITY PLANS PROJECT. EXACT ACTUAL LOCATIONS, SIZES, DIMENSIONS, ECT. MUST BE FIELD VERIFIED BY THE CONTRACTOR.

ISSUE FOR:	BID SET	NO	REVISION	DATE
ISSUE DATE:	5/10/2026			
SCALE:	3/8" = 1'-0"			
DESIGNED BY:	MIS			
DRAWN BY:	RLM			
CHECKED BY:	MIS			

**WASTEWATER TREATMENT PLANT  
SLUDGE DEWATERING IMPROVEMENTS  
SOLIDS HANDLING BUILDING**

**EQUIPMENT PROCUREMENT  
FIRST FLOOR AT EL. 658.25  
PROPOSED POLYMER SKID SYSTEM**

PROJECT NO.	<b>38009</b>
DISCIPLINE	<b>PROCESS</b>
SHEET NAME	<b>10D-03</b>
SHEET	<b>8</b>
OF	<b>10</b>



**verdantas**

NO	REVISION	DATE

**WASTEWATER TREATMENT PLANT  
SLUDGE DEWATERING IMPROVEMENTS  
SOLIDS HANDLING BUILDING**

**EQUIPMENT PROCUREMENT  
BASEMENT PLAN AT EL. 644.50  
SLUDGE FEED PUMPS P11 & P12**

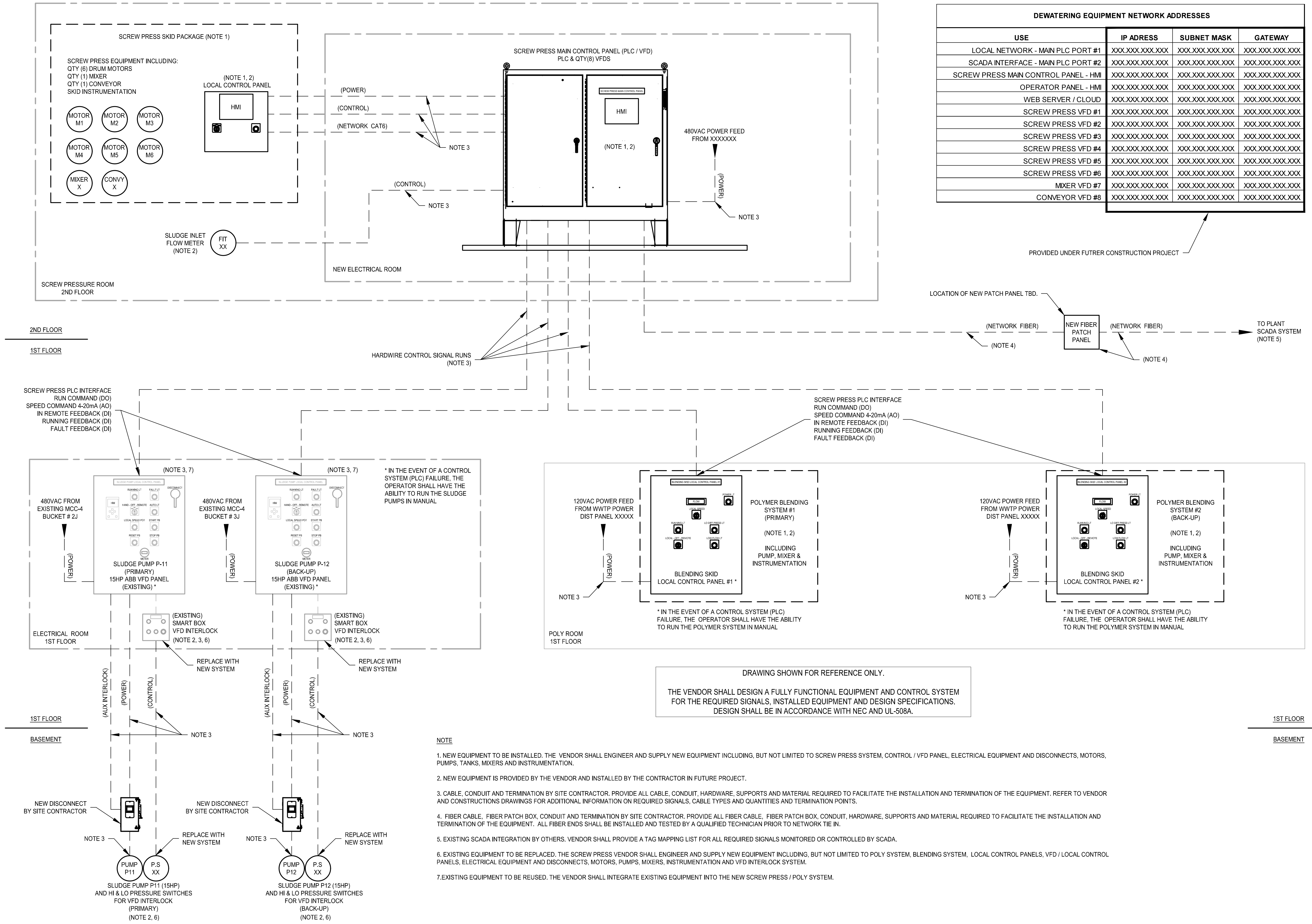
PROJECT NO.	38009
DISCIPLINE	PROCESS
SHEET NAME	10D-04
SHEET	9
OF	10

**BASEMENT PLAN AT EL. 644.50  
PROPOSED SLUDGE FEED PUMPS**  
SCALE: 3/8" = 1'-0"

NOTE:  
THIS SCANNED IMAGE IS OF RECORD DRAWING FROM THE STERNS & WHEELER 1977 WASTE WATER FACILITY PLANS PROJECT AND IS INTENDED FOR REFERENCE ONLY. ACTUAL LOCATIONS, SIZES, DIMENSIONS, ECT. MUST BE FIELD VERIFIED BY THE CONTRACTOR.

DEWATERING EQUIPMENT NETWORK ADDRESSES			
USE	IP ADRESS	SUBNET MASK	GATEWAY
LOCAL NETWORK - MAIN PLC PORT #1	XXX.XXX.XXX.XXX	XXX.XXX.XXX.XXX	XXX.XXX.XXX.XXX
SCADA INTERFACE - MAIN PLC PORT #2	XXX.XXX.XXX.XXX	XXX.XXX.XXX.XXX	XXX.XXX.XXX.XXX
SCREW PRESS MAIN CONTROL PANEL - HMI	XXX.XXX.XXX.XXX	XXX.XXX.XXX.XXX	XXX.XXX.XXX.XXX
OPERATOR PANEL - HMI	XXX.XXX.XXX.XXX	XXX.XXX.XXX.XXX	XXX.XXX.XXX.XXX
WEB SERVER / CLOUD	XXX.XXX.XXX.XXX	XXX.XXX.XXX.XXX	XXX.XXX.XXX.XXX
SCREW PRESS VFD #1	XXX.XXX.XXX.XXX	XXX.XXX.XXX.XXX	XXX.XXX.XXX.XXX
SCREW PRESS VFD #2	XXX.XXX.XXX.XXX	XXX.XXX.XXX.XXX	XXX.XXX.XXX.XXX
SCREW PRESS VFD #3	XXX.XXX.XXX.XXX	XXX.XXX.XXX.XXX	XXX.XXX.XXX.XXX
SCREW PRESS VFD #4	XXX.XXX.XXX.XXX	XXX.XXX.XXX.XXX	XXX.XXX.XXX.XXX
SCREW PRESS VFD #5	XXX.XXX.XXX.XXX	XXX.XXX.XXX.XXX	XXX.XXX.XXX.XXX
SCREW PRESS VFD #6	XXX.XXX.XXX.XXX	XXX.XXX.XXX.XXX	XXX.XXX.XXX.XXX
MIXER VFD #7	XXX.XXX.XXX.XXX	XXX.XXX.XXX.XXX	XXX.XXX.XXX.XXX
CONVEYOR VFD #8	XXX.XXX.XXX.XXX	XXX.XXX.XXX.XXX	XXX.XXX.XXX.XXX

PROVIDED UNDER FUTRER CONSTRUCTION PROJECT



DRAWING SHOWN FOR REFERENCE ONLY.  
 THE VENDOR SHALL DESIGN A FULLY FUNCTIONAL EQUIPMENT AND CONTROL SYSTEM FOR THE REQUIRED SIGNALS, INSTALLED EQUIPMENT AND DESIGN SPECIFICATIONS. DESIGN SHALL BE IN ACCORDANCE WITH NEC AND UL-508A.

- NOTE**
- NEW EQUIPMENT TO BE INSTALLED. THE VENDOR SHALL ENGINEER AND SUPPLY NEW EQUIPMENT INCLUDING, BUT NOT LIMITED TO SCREW PRESS SYSTEM, CONTROL / VFD PANEL, ELECTRICAL EQUIPMENT AND DISCONNECTS, MOTORS, PUMPS, TANKS, MIXERS AND INSTRUMENTATION.
  - NEW EQUIPMENT IS PROVIDED BY THE VENDOR AND INSTALLED BY THE CONTRACTOR IN FUTURE PROJECT.
  - CABLE, CONDUIT AND TERMINATION BY SITE CONTRACTOR. PROVIDE ALL CABLE, CONDUIT, HARDWARE, SUPPORTS AND MATERIAL REQUIRED TO FACILITATE THE INSTALLATION AND TERMINATION OF THE EQUIPMENT. REFER TO VENDOR AND CONSTRUCTIONS DRAWINGS FOR ADDITIONAL INFORMATION ON REQUIRED SIGNALS, CABLE TYPES AND QUANTITIES AND TERMINATION POINTS.
  - FIBER CABLE, FIBER PATCH BOX, CONDUIT AND TERMINATION BY SITE CONTRACTOR. PROVIDE ALL FIBER CABLE, FIBER PATCH BOX, CONDUIT, HARDWARE, SUPPORTS AND MATERIAL REQUIRED TO FACILITATE THE INSTALLATION AND TERMINATION OF THE EQUIPMENT. ALL FIBER ENDS SHALL BE INSTALLED AND TESTED BY A QUALIFIED TECHNICIAN PRIOR TO NETWORK TIE IN.
  - EXISTING SCADA INTEGRATION BY OTHERS. VENDOR SHALL PROVIDE A TAG MAPPING LIST FOR ALL REQUIRED SIGNALS MONITORED OR CONTROLLED BY SCADA.
  - EXISTING EQUIPMENT TO BE REPLACED. THE SCREW PRESS VENDOR SHALL ENGINEER AND SUPPLY NEW EQUIPMENT INCLUDING, BUT NOT LIMITED TO POLY SYSTEM, BLENDING SYSTEM, LOCAL CONTROL PANELS, VFD / LOCAL CONTROL PANELS, ELECTRICAL EQUIPMENT AND DISCONNECTS, MOTORS, PUMPS, MIXERS, INSTRUMENTATION AND VFD INTERLOCK SYSTEM.
  - EXISTING EQUIPMENT TO BE REUSED. THE VENDOR SHALL INTEGRATE EXISTING EQUIPMENT INTO THE NEW SCREW PRESS / POLY SYSTEM.

DATE	REVISION	NO	BID SET	ISSUE FOR:
			5/10/2026	AE NOTED
				DESIGNED BY:
				DRAWN BY:
				CHECKED BY:

**WASTEWATER TREATMENT PLANT  
 SLUDGE DEWATERING IMPROVEMENTS  
 SOLIDS HANDLING BUILDING  
 EQUIPMENT PROCUREMENT  
 SCREW PRESS SYSTEM  
 ARCHITECTURAL PLAN**

PROJECT NO.	38009
DISCIPLINE	
<b>INSTRUMENTATION</b>	
SHEET NAME	
<b>101-001</b>	
SHEET	OF
<b>10</b>	<b>10</b>