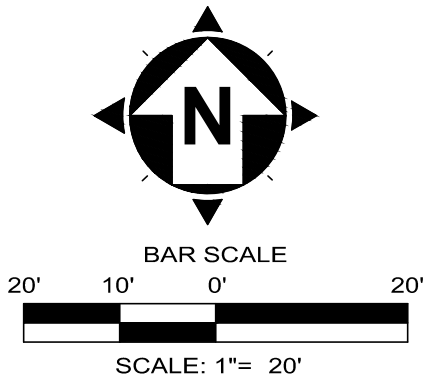
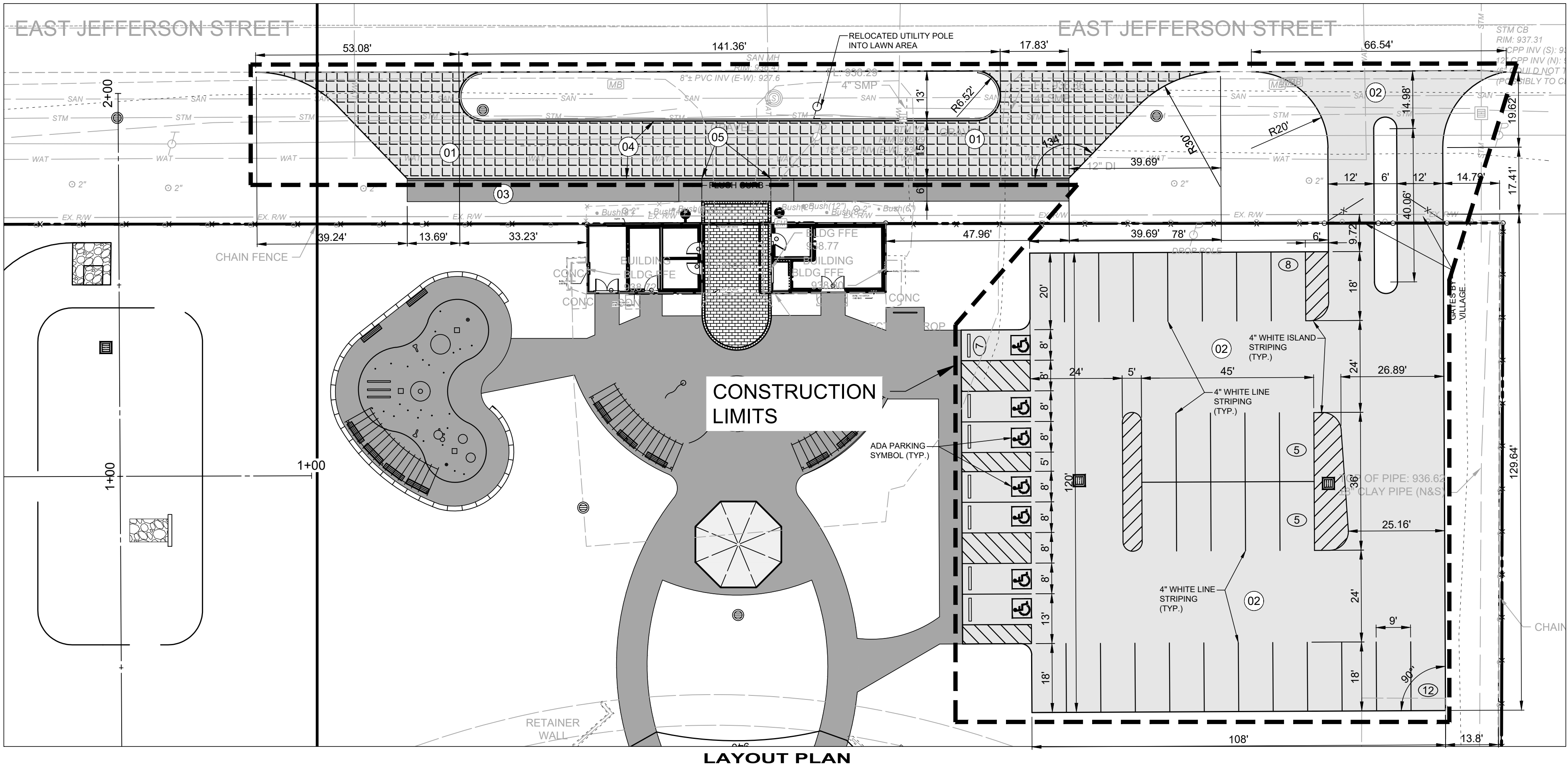


CODED NOTES & LEGEND

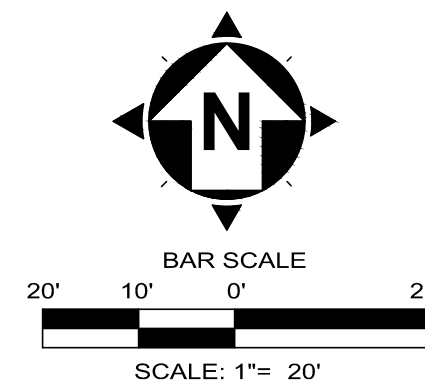
	01	HEAVY DUTY ASPHALT PAVEMENT
	02	STANDARD DUTY ASPHALT PAVEMENT
	03	CONCRETE WALK (BY OTHERS)
	04	CONCRETE CURB (BY OTHERS)
	05	FLUSH CONCRETE CURB (BY OTHERS)

- SHEET NOTES**
- THE IMPROVEMENT PLANS HAVE BEEN DESIGNED IN ACCORDANCE WITH THE APPLICABLE RULES AND REGULATIONS OF THE VILLAGE OF JEFFERSON, AS WELL AS THE CONSTRUCTION AND MATERIAL SPECIFICATIONS OF THE OHIO DEPARTMENT OF TRANSPORTATION, 2023 EDITION, INCLUDING ALL SUPPLEMENTAL SPECIFICATIONS AND DRAWINGS, SHALL GOVERN THIS PROJECT. FOR PURPOSES OF THIS PLAN, REFERENCES TO DIRECTOR OR ENGINEER SHALL BE CONSTRUED TO MEAN THE JEFFERSON VILLAGE ENGINEER AND/OR HIS REPRESENTATIVE.
 - ALL WORK CONTEMPLATED UNDER THIS CONTRACT SHALL COMPLY WITH THE U.S. DEPARTMENT OF LABOR OCCUPATIONAL SAFETY AND HEALTH ACT.
 - WORK UNDER THIS CONTRACT SHALL ONLY INCLUDE MATERIAL AND LABOR FOR ASPHALT PAVING AND PAVEMENT STRIPING. SUBGRADE COMPACTION AND 304 BASE SHALL BE INSTALLED BY OTHERS. THE CONTRACTOR SHALL COORDINATE THE ASPHALT PAVING WORK WITH OTHER CONTRACTORS AND MAKE ADJUSTMENTS TO THE BASE AS NEEDED PRIOR TO PAVING IN ORDER TO MATCH THE GRADES AND DIMENSIONS SHOWN ON THIS PLAN.
 - THE TIMING OF THE WORK ON THIS PLAN SHALL BE COORDINATED WITH THE CITY AND OTHER CONTRACTORS PERFORMING SITE WORK FOR THE PROJECT.
 - ALL STORM SEWER AND UTILITY WORK SHOWN ON THIS PLAN SHALL BE PERFORMED BY OTHERS.



verdantas

ISSUED FOR:	BID	NO	REVISION	DATE
ISSUE DATE:	08/28/25			
SCALE:	AS SHOWN			
DESIGNED BY:	WTV			
DRAWN BY:	WTV			
CHECKED BY:	JC			



ASPHALT PAVEMENT DETAIL

SCALE: NONE

ODOT ITEM 441 ASPHALT CONCRETE SURFACE COURSE, TYPE 1 (448), PG64-22

ODOT ITEM 407 TACK COAT FOR INTERMEDIATE COURSE (0.10 GAL/SY)

ODOT ITEM 441 ASPHALT CONCRETE INTERMEDIATE COURSE, TYPE 2 (448)

ODOT ITEM 301 ASPHALT CONCRETE BASE

ODOT ITEM 304 AGGREGATE BASE, LIMESTONE, PROOF ROLLED & COMPACTED TO 98% MAX. DENSITY OF STANDARD PROCTOR (BY OTHERS)

PROOFROLL & COMPACT SUBGRADE PER ODOT ITEM 203 (BY OTHERS)

HEAVY DUTY PARKING LOT DRIVE LANES & RESIDENTIAL ROADS (SN = 4.00)

ODOT ITEM 441 ASPHALT CONCRETE SURFACE COURSE, TYPE 1 (448), PG64-22

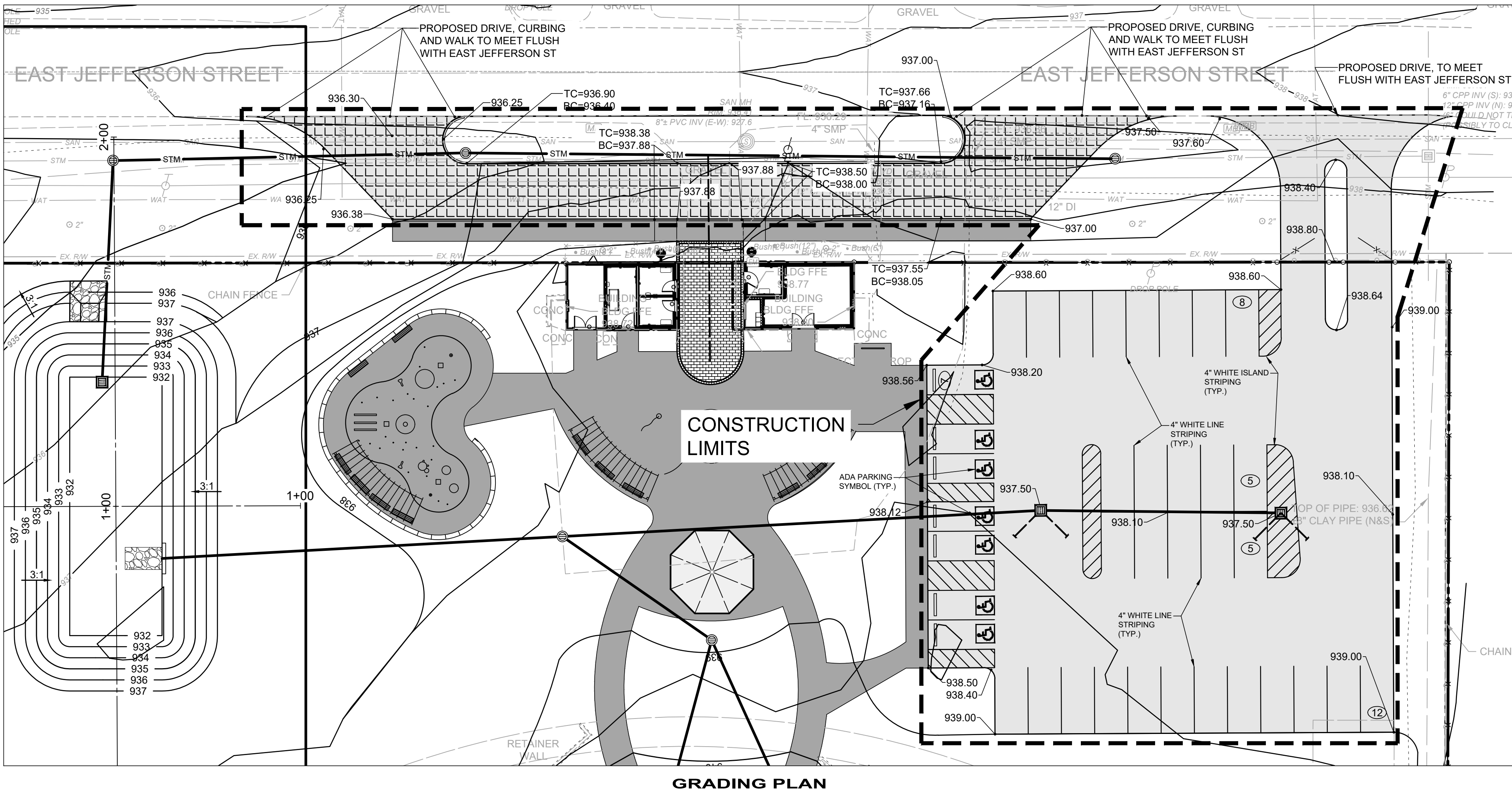
ODOT ITEM 407 TACK COAT FOR INTERMEDIATE COURSE (0.10 GAL/SY)

ODOT ITEM 441 ASPHALT CONCRETE INTERMEDIATE COURSE, TYPE 2 (448)

ODOT ITEM 304 AGGREGATE BASE, LIMESTONE, PROOF ROLLED & COMPACTED TO 98% MAX. DENSITY OF STANDARD PROCTOR (BY OTHERS)

PROOFROLL & COMPACT SUBGRADE PER ODOT ITEM 203 (BY OTHERS)

PARKING LOTS & DRIVE LANES (SN = 2.75)



**JEFFERSON COMMUNITY PARK
ASPHALT PAVING
- VILLAGE OF JEFFERSON, ASHTABULA COUNTY -
ASPHALT LAYOUT AND GRADING
PLAN - CONTRACT B**

PROJECT NO.	242425
DISCIPLINE	CIVIL
SHEET NAME	PAVING PLAN
SHEET	OF
1	1