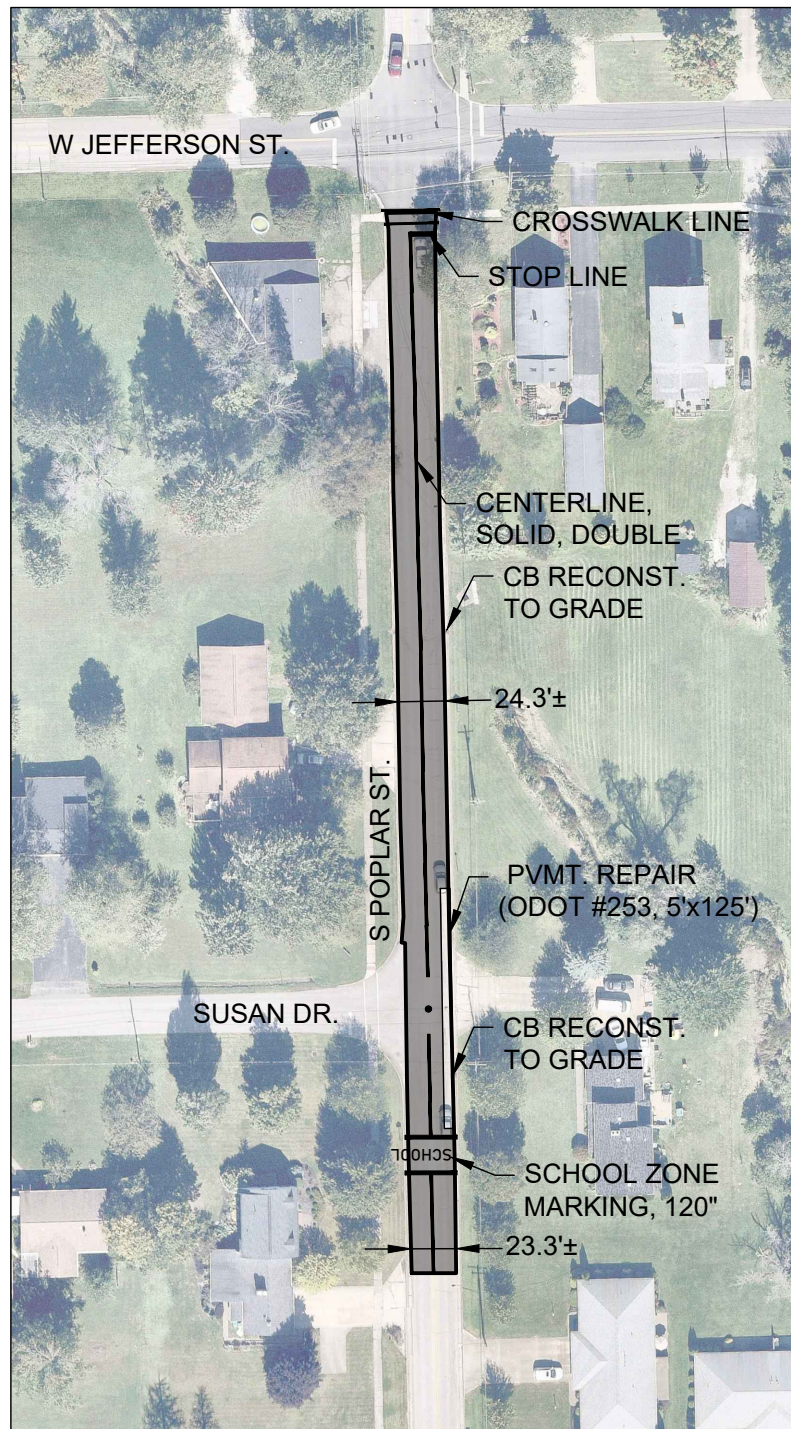
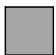
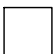


Z:\PROJECT FILES\A-J\JEFFERSON\36360 - 2025 JEFFERSON PAVING PROGRAM\CAD\SHEET'S AND PLANS\36360 - JEFFERSON PAVING PROGRAM.DWG - POPLAR - 8/15/2025 8:58:02 AM - WILLIAM VASKO



LEGEND	
	MILL AND FILL
	PARTIAL DEPTH PAVEMENT REPAIR



**S POPLAR ST.**

PAVEMENT QUANTITIES  
MILL AND FILL: 1,470 SQ YD  
PARTIAL DEPTH REPAIR: 80 SQ YD

NOTES: MILL 1.5" AND FILL 1.5"

CATCH BASIN RECONSTRUCTION TO INCLUDE  
5' OF CURB AND GUTTER REPLACEMENT ON  
EITHER SIDE OF THE STRUCTURE.

**verdantas**

ISSUE DATE: AUG 2025  
SCALE: 1"=100'  
PAPER SIZE: 8-1/2 X 11  
DRAWN BY: JCR  
CHECKED BY: WTV

**2025 ROAD PAVING PROGRAM**  
VILLAGE OF JEFFERSON  
Village of Jefferson, Ashtabula Co., OH 44047

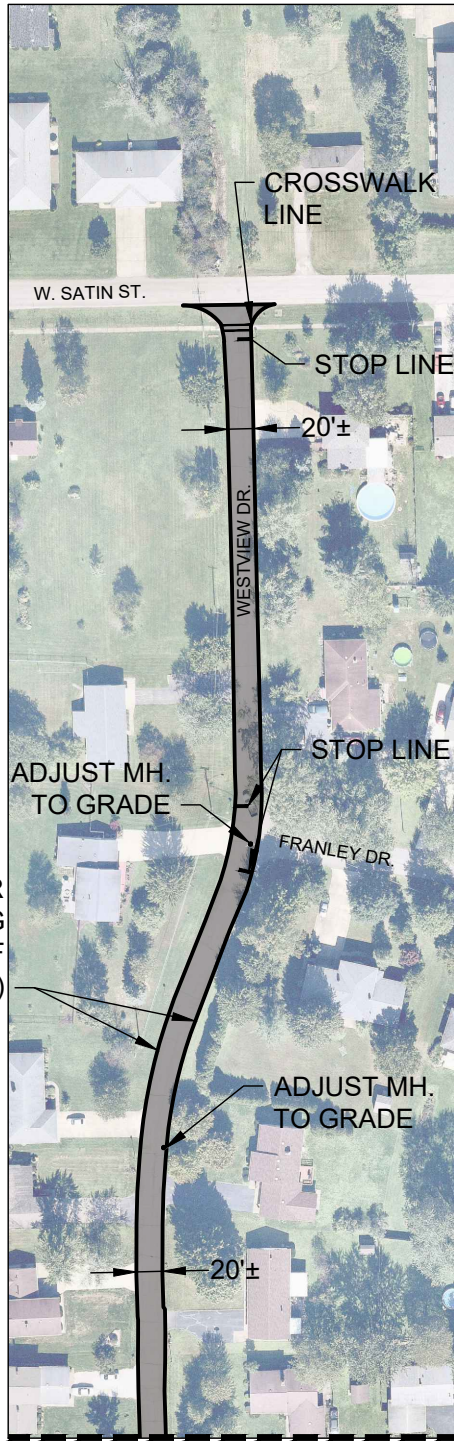
**CONTRACT A**

PROJECT NO.	
<b>36360</b>	
DISCIPLINE	
<b>SITE-CIVIL</b>	
SHEET	OF
<b>1</b>	<b>5</b>

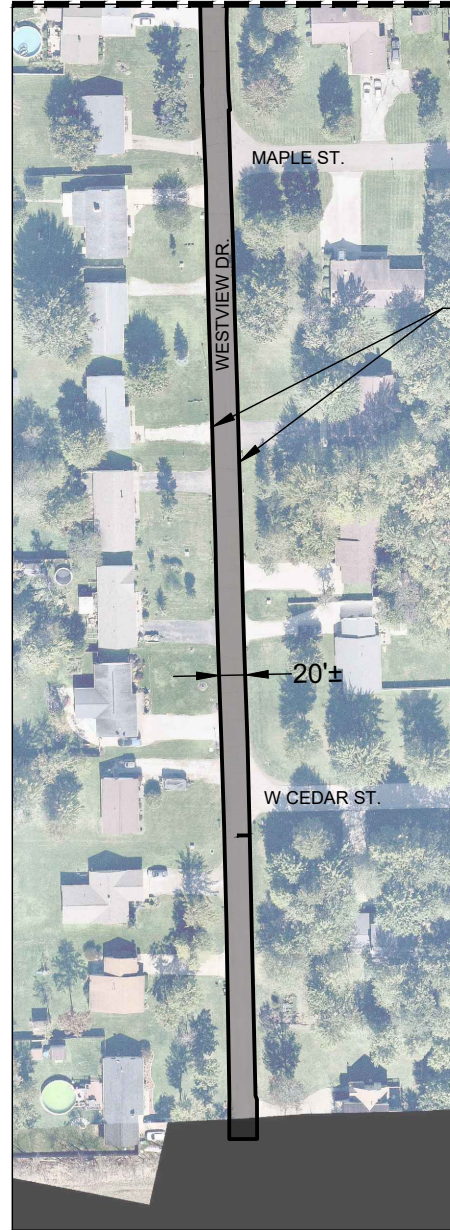


Z:\PROJECT FILES\IA-J\JEFFERSON\36360 - 2025 JEFFERSON PAVING PROGRAM\CAD\SHEET'S AND PLANS\36360 - JEFFERSON PAVING PROGRAM.DWG - WESTVIEW - 8/15/2025 8:58:02 AM - WILLIAM VASKO

2' WIDE LINEAR  
GRADING  
(BOTH SIDES OF  
WESTVIEW)



MATCHLINE-1



2' WIDE LINEAR  
GRADING  
(BOTH SIDES OF  
WESTVIEW)

LEGEND

MILL AND FILL



**WESTVIEW DR.**

PAVEMENT QUANTITIES  
MILL AND FILL: 4,000 SQ YD

NOTES: MILL 1.5" AND FILL 1.5"

**verdantas**

ISSUE DATE: AUG 2025  
SCALE: 1"=100'  
PAPER SIZE: 8-1/2 X 11  
DRAWN BY: JCR  
CHECKED BY: WTV

**2025 ROAD PAVING PROGRAM**  
VILLAGE OF JEFFERSON  
Village of Jefferson, Ashtabula Co., OH 44047

**CONTRACT A**

PROJECT NO.

**36360**

DISCIPLINE

**SITE-CIVIL**

SHEET

**2**


OF

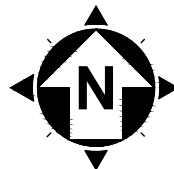
**5**



Z:\PROJECT FILES\IA-J\JEFFERSON\36360 - 2025 JEFFERSON PAVING PROGRAM\CAD\SHEET'S AND PLANS\36360 - JEFFERSON PAVING PROGRAM.DWG - WOODLAND - 8/15/2025 8:58:02 AM - WILLIAM VASKO



LEGEND	
	FULL DEPTH CONCRETE PVMT REPAIR



## WOODLAND WAY

### CONCRETE QUANTITIES

CONCRETE REPAIR: 55 SQ YD

NOTE: CONCRETE REPAIR  
SHALL BE 30" WIDTH MINIMUM.  
SEE CONCRETE DETAILS

**verdantas**

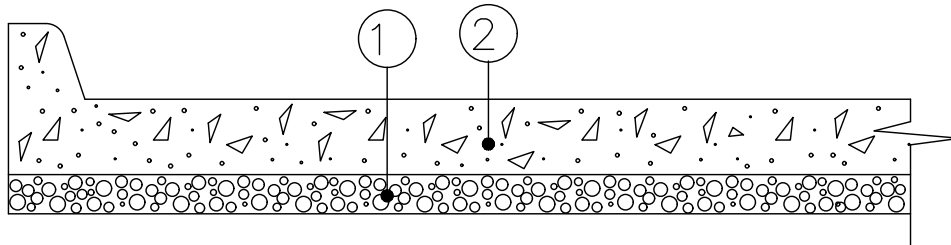
ISSUE DATE: AUG 2025  
SCALE: 1"=100'  
PAPER SIZE: 8-1/2 X 11  
DRAWN BY: JCR  
CHECKED BY: WTV

## 2025 ROAD PAVING PROGRAM

VILLAGE OF JEFFERSON  
Village of Jefferson, Ashtabula Co., OH 44047

**CONTRACT A**

PROJECT NO.	
<b>36360</b>	
DISCIPLINE	
<b>SITE-CIVIL</b>	
SHEET	OF
<b>3</b>	<b>5</b>

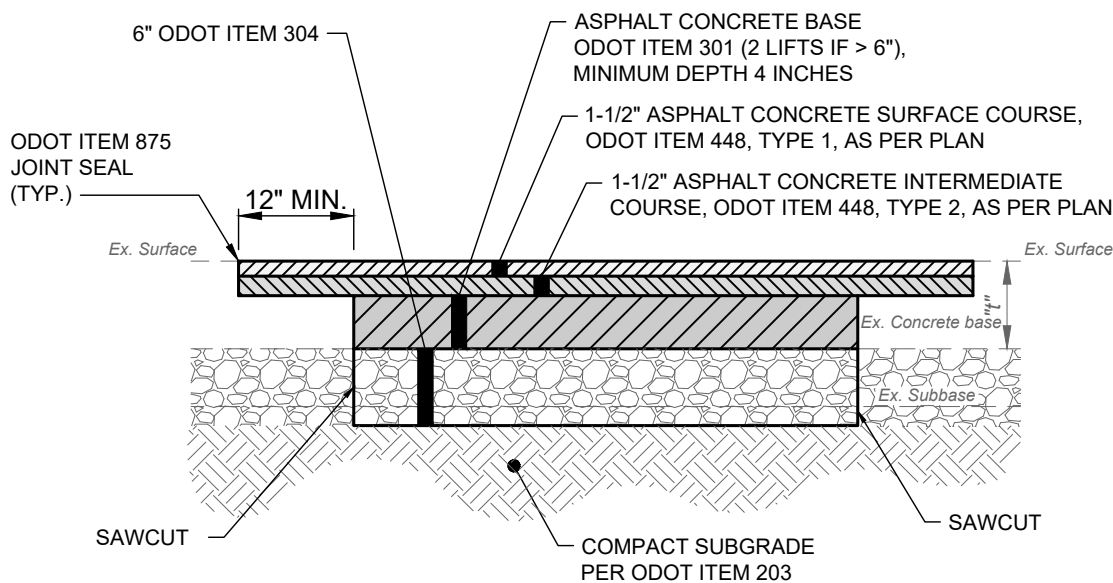


- ① 3" ODOT ITEM 304 COMPACTED LIMESTONE AGGREGATE BASE
- ② 8" MIN. ODOT ITEM 255 INCLUDING INTEGRAL CURB, DOWEL/HOOK BOLT INSTALLATION. (CONCRETE THICKNESS SHALL NOT BE LESS THAN EXISTING)

**NOTES:**

1. EXCAVATION AND REMOVAL OF EXISTING PAVEMENT AND 3" OF SUBGRADE SHALL BE INCLUDED IN THE UNIT PRICE OF ITEM 255.
2. PREP, INSTALLATION, AND COMPACTION OF 3" OF ODOT ITEM 304 SHALL BE INCLUDED IN THE PRICE OF ITEM 255.
3. CONCRETE SHALL BE CLASS QC MS.
4. FOR ALL PAVEMENT REPAIRS, ASPHALT AND/OR CONCRETE PAVEMENT SHALL BE FULL DEPTH SAWCUT.
5. ALL JOINTS SHALL BE SEALED WITH HOT APPLIED SEALER - ASTM D6690 TYPE II.
6. HOOK BOLTS SHALL BE INSTALLED AT 18" O/C ALONG ALL LONGITUDINAL JOINTS.
7. DOWELS SHALL BE INSTALLED AT 12" O/C ALONG ALL TRANSVERSE JOINTS.

**JOINT / SLAB REPLACEMENT DETAIL**  
**(ITEM 255)**



**NOTES:**

1. ASPHALT PAVEMENT TO BE REMOVED SHALL BE SAW CUT IN A NEAT AND STRAIGHT LINE AT THE LIMITS SHOWN ON THE PLANS OR AS FIELD MARKED BY THE ENGINEER. ADDITIONAL SAW CUTS MAY BE DESIRED TO FACILITATE REMOVAL, BUT THERE WILL BE NO EXTRA PAYMENT.
2. PAVEMENT SHALL BE REMOVED WITHOUT DAMAGING OR UNDERMINING THE PAVEMENT TO REMAIN. IF ADJACENT PAVEMENT IS DAMAGED, THE CONTRACTOR SHALL MAKE ADDITIONAL SAW CUTS, REMOVE THE DAMAGED AREAS AND REPAIR AS NECESSARY WITH NO ADDITIONAL COMPENSATION.
3. TACK COAT SHALL BE APPLIED TO THE EXPOSED EX. ASPHALT BASE COURSE AND ALL SIDES OF PATCH.
4. ODOT ITEM 875 JOINT SEALANT SHALL BE APPLIED AROUND THE EDGE OF PATCH.

**PAVEMENT REPAIR DETAIL**  
**(ITEM 253)**

**verdantas**

ISSUE DATE: AUG 2025  
SCALE: N/A  
PAPER SIZE: 8-1/2 X 11  
DRAWN BY: JCR  
CHECKED BY: WTV

**2025 ROAD PAVING PROGRAM**  
**VILLAGE OF JEFFERSON**  
**Village of Jefferson, Ashtabula Co., OH 44047**

**CONTRACT A**

PROJECT NO.

**36360**

DISCIPLINE

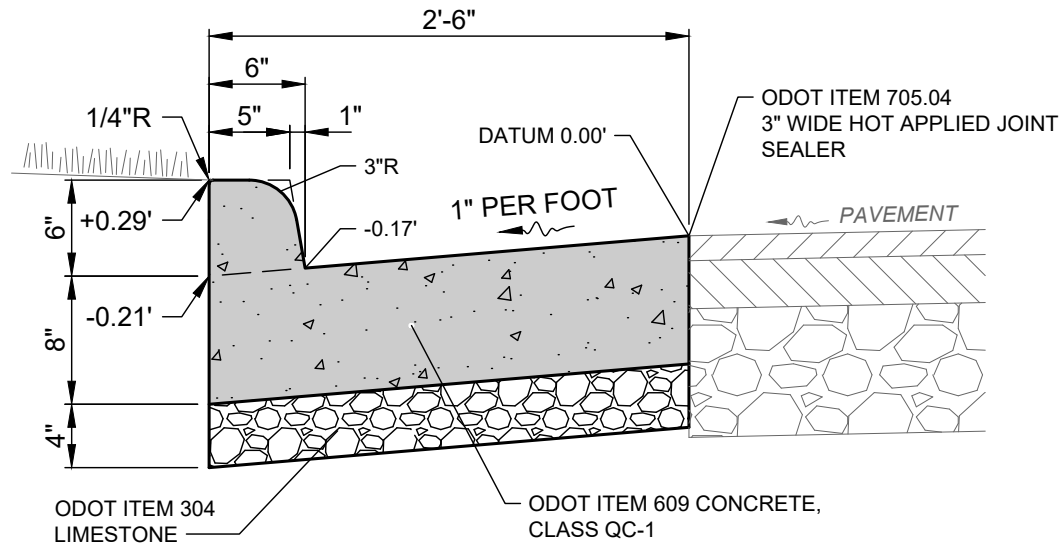
**SITE-CIVIL**

SHEET OF

**4**

**5**

Z:\PROJECT FILES\IA-J\JEFFERSON\36360 - 2025 JEFFERSON PAVING PROGRAM\CAD\SHEETS AND PLANS\36360 - JEFFERSON PAVING PROGRAM.DWG - DETAILS 2 - 8/15/2025 8:56:02 AM - WILLIAM VASKO



### 30" WIDE VERTICAL CURB & GUTTER

#### NOTES:

1. EXTEND EXPANSION JOINTS TO TOP OF CURB.
2. JOINT SEAL TO EXTEND THE FULL GUTTER WIDTH AND CURB FACE.
3. INSTALL 1" PREFORMED JOINT MATERIAL AND USE 5/8"Ø X 18" LONG DOWELS INTO COLD JOINTS BOTTOM WHERE NEW CURB MEETS EXISTING CURB OR AT EXPANSION JOINTS.
4. PROVIDE BUTT JOINTS BETWEEN CURB AND GUTTER AND NEW OR EXISTING RIGID PAVEMENTS WITH TIE BARS OR HOOK BOLTS PROVIDED AT 5' INTERVALS.
5. PROVIDE CONTRACTION JOINTS AT 15' O.C.
6. APPLY LIQUID-MEMBRANE CURING COMPOUND (200 S.F./GAL.).
7. THIS DETAIL SHOWS ASPHALT PAVEMENT FOR REFERENCE ONLY. SEE SITE PLAN FOR ACTUAL TYPE OF PAVEMENT.

## (ODOT TYPE 2A) VERTICAL CURB & GUTTER DETAIL

SCALE: NONE

**verdantas**

ISSUE DATE: AUG 2025  
SCALE: N/A  
PAPER SIZE: 8-1/2 X 11  
DRAWN BY: JCR  
CHECKED BY: WTV

**2025 ROAD PAVING PROGRAM**  
VILLAGE OF JEFFERSON  
Village of Jefferson, Ashtabula Co., OH 44047

**CONTRACT A**

PROJECT NO.  
**36360**  
DISCIPLINE  
**SITE-CIVIL**  
SHEET  
**5**  
OF  
**5**