

CITY OF SPRINGDALE OFFICIALS

MAYOR

LAWRENCE HAWKINS III

CITY ADMINISTRATOR

BRIAN UHL

ASSISTANT CITY ADMINISTRATOR

STEPHANIE A. MORGAN

CITY COUNCIL MEMBERS

JEFFREY ANDERSON

DAN JACOBS

DAVID E. GLEAVES

MICHELLE L. MCFARLAND

LAVONNE L. WEBSTER

MEGHAN SULLIVAN-WISECUP

THOMAS VANOVER

CITY OF SPRINGDALE

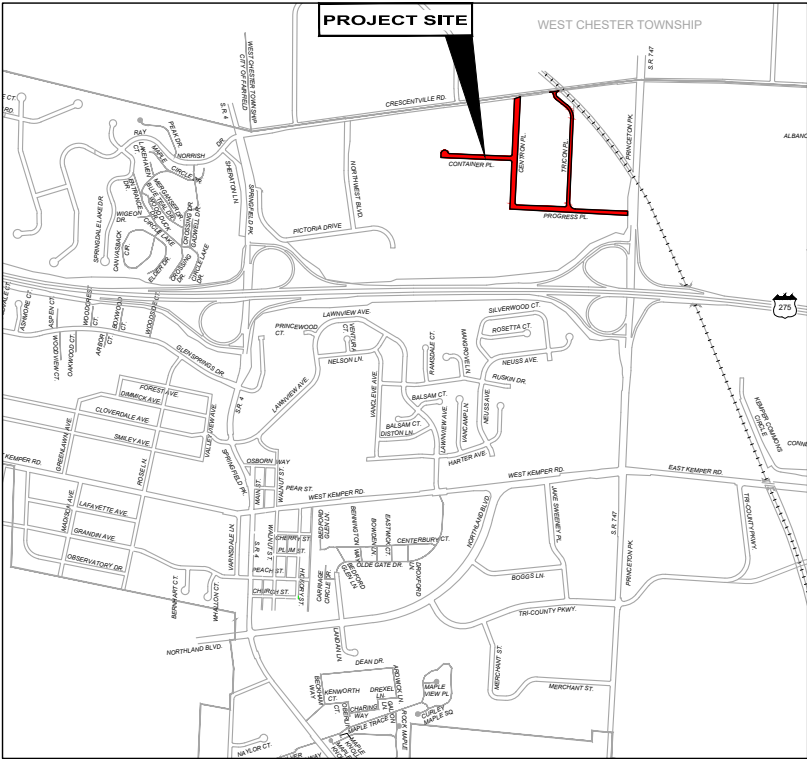
HAMILTON COUNTY, OHIO

SPRINGDALE INDUSTRIAL PARK

CONCRETE REPAIRS & CATCH

BASIN RECONSTRUCTION

33932



VICINITY MAP

O.D.O.T. SPECIFICATIONS

THE LATEST STANDARD SPECIFICATIONS OF THE OHIO DEPARTMENT OF TRANSPORTATION , INCLUDING CHANGES AND SUPPLEMENTAL SPECIFICATIONS THERETO AND CITY OF CHEVIOT ENGINEERING DEPARTMENT REQUIREMENTS SHALL GOVERN THIS IMPROVEMENT.

SOURCE OF BOUNDARY INFORMATION

THE BOUNDARY INFORMATION SHOWN ON THESE PLANS IS BASED UPON HAMILTON COUNTY G.I.S. MAPPING AND DOES NOT REPRESENT AN ACTUAL FIELD BOUNDARY SURVEY BY CT CONSULTANTS, INC.

SHEET INDEX	
SHEET NO.	SHEET TITLE
1	TITLE
2	GENERAL NOTES
3	DETAILS
4	DETAILS
5	CONTAINER PLACE
6	CENTRON PLACE
7	CENTRON PLACE
8	PROGRESS PLACE
9	PROGRESS PLACE
10	TRICON PLACE
11	TRICON PLACE

SHAWN RIGGS

PE84714

verdantas

DATE	REVISION	NO	BID	ISSUED FOR:
			6/18/2025	
			AS NOTED	
			PMAD	
			PMAD	
			SRG	

SPRINGDALE INDUSTRIAL PARK

CONCRETE REPAIRS & CATCH

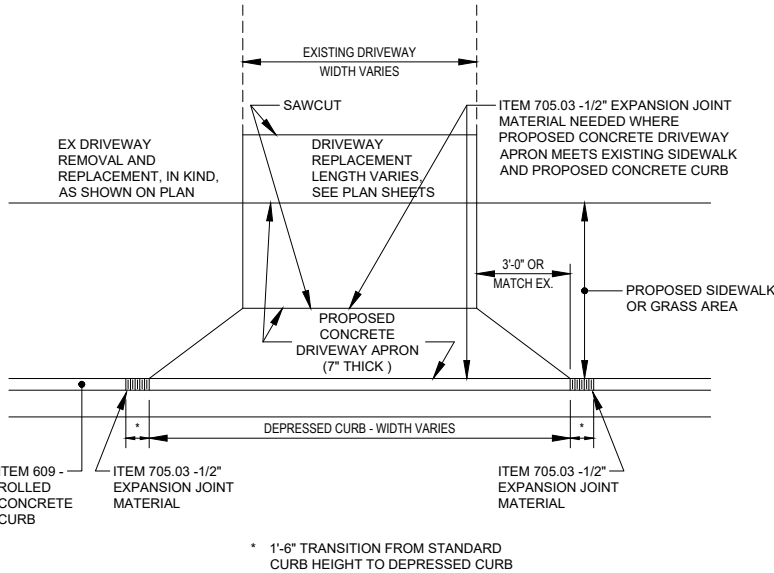
BASIN RECONSTRUCTION

CITY OF SPRINGDALE - HAMILTON COUNTY, OHIO

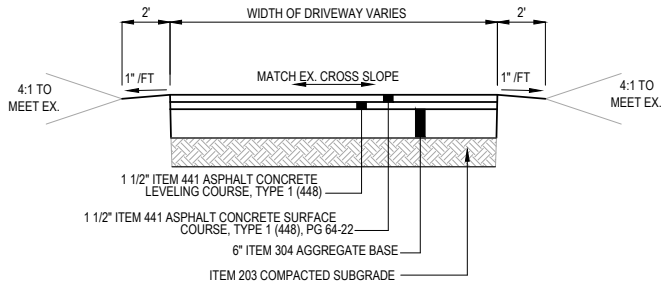
TITLE SHEET

PROJECT NO.	
33932	
DISCIPLINE	
CIVIL	
SHEET NAME	
TTL	
SHEET	OF
1	11

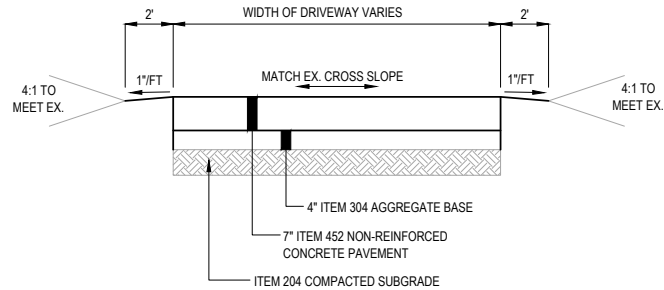




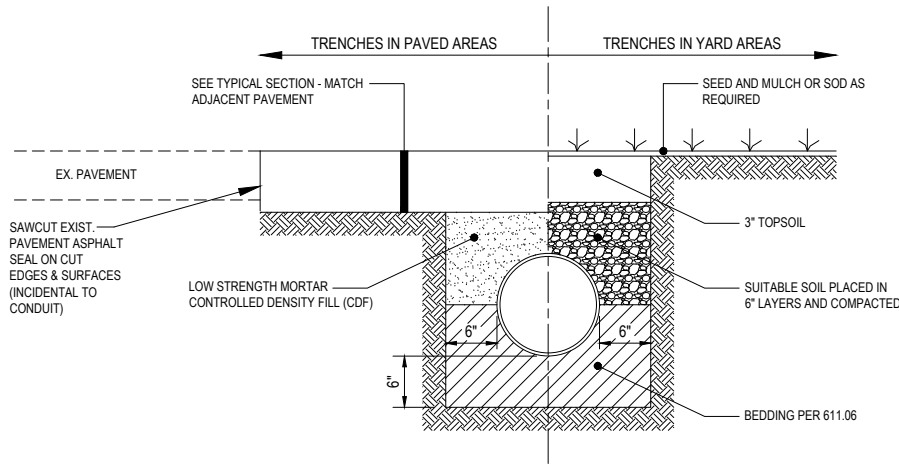
**ITEM 452 - NON-REINFORCED CONCRETE PAVEMENT,  
MISC: 9\"/>**



**ASPHALT DRIVEWAY REPLACEMENT**  
NTS

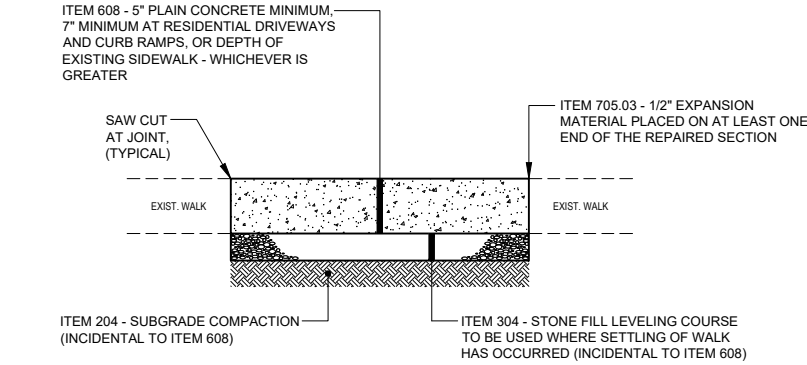


**CONCRETE DRIVEWAY REPLACEMENT**  
NTS



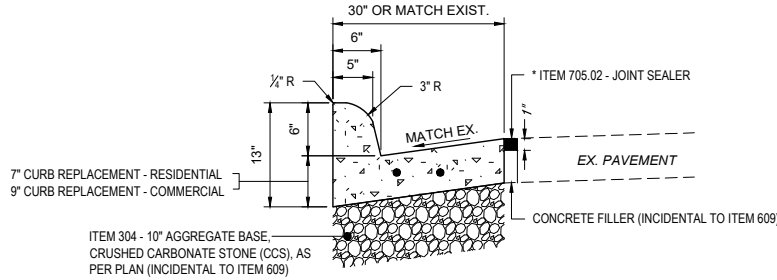
NOTES  
-COST SHALL BE INCIDENTAL TO APPROPRIATE 611

**TYPICAL TRENCH BACKFILL**  
NTS

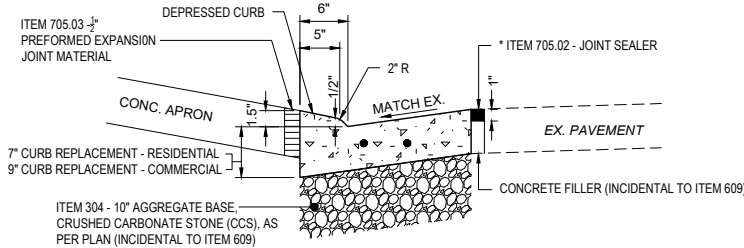


**ITEM 608 - SIDEWALK  
REPLACEMENT**  
NTS

- NOTES:
1. THE CITY SHALL MARK IN THE FIELD THE WALK TO BE REPLACED. REPLACEMENT WALK SHALL MATCH THE LINE AND GRADE OF THE EXISTING WALK AND THE SAME JOINT PATTERN SHALL BE MAINTAINED. ITEM 705.03 - 1/2\"/>
  2. THE FINISH APPLIED TO THE CONCRETE WALK SHALL BE CONSISTENT WITH THE EXISTING WALK IT IS TO MATCH AND BE APPROVED BY THE CITY. ALL JOINTS AND OUTSIDE EDGES OF THE WALK SHALL BE TOoled WITH AN EDGER OR JOINT TOOL AFTER BROOMING OR HAND FINISHING OF THE FINAL SURFACE.
  3. THE REPLACEMENT SIDEWALK SHALL BE A MINIMUM THICKNESS OF 7\"/>
  4. ALL DISTURBED YARD AREAS SHALL BE RESTORED TO GRADE, SEEDED, AND MULCHED BEFORE THE WORK IS APPROVED FOR PAYMENT AND SHALL BE INCIDENTAL TO ITEM 608.



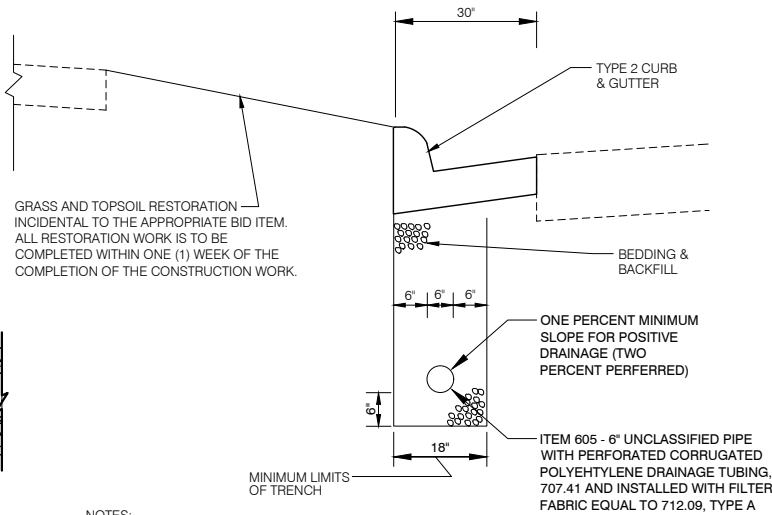
**VERTICAL CURB & GUTTER**



**DEPRESSED VERTICAL CURB & GUTTER**

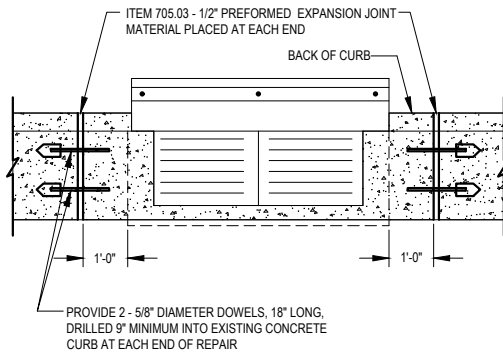
- NOTES:
- 1.) PROVIDE 2 - 5/8\"/>
  - 2.) IF EXISTING CURB HAS BEEN OVERLAYED WITH ASPHALT, THE CURB SHALL BE REPLACED TO MATCH EXISTING CURB & THE ASPHALT OVERLAY REPLACED. THE DIMENSIONS FOR THE DEPRESSED CURB SHALL THEN BE TAKEN FROM THE TOP OF THE NEW OVERLAY.
  - 3.) THE MINIMUM CURB REPLACEMENT SECTION SHALL BE 3'-0\"/>
  - 4.) EXPANSION JOINT MATERIAL AND JOINT SEALER IS NOT REQUIRED FOR THAT PORTION OF THE CURB WHICH IS ADJACENT TO A FLEXIBLE TYPE PAVEMENT. BOTH MATERIALS ARE REQUIRED AS DETAILED FOR THE FULL HEIGHT OF THE RIGID PAVEMENT AND CONCRETE BASE.
  - 5.) IF UPON REMOVAL OF THE EXISTING CURB AND GUTTER IT IS DETERMINED THAT GRADING IN THIS AREA WILL BE REQUIRED TO ACCOMMODATE THE NEW CURB AND GUTTER; ONE OF THE FOLLOWING WILL TAKE PLACE:  
A.) ADDITIONAL GRADING WILL BE REQUIRED TO BRING THE GRADE TO THE PROPER ELEVATION.  
B.) PLACEMENT AND COMPACTION OF ITEM 304, AGGREGATE BASE, SHALL TAKE PLACE TO BRING THE GRADE TO THE PROPER ELEVATION. ALL MATERIAL AND LABOR REQUIRED TO COMPLETE THE ABOVE NOTED ACTION SHALL BE INCIDENTAL TO THE APPROPRIATE ITEM 609.
  - 6.) ANY PATCHING OR REPAIR ON ADJACENT PAVEMENT IS INCIDENTAL TO ITEM 609.

**ITEM 609 - STANDARD CURB REPLACEMENT  
DETAILS**  
NTS



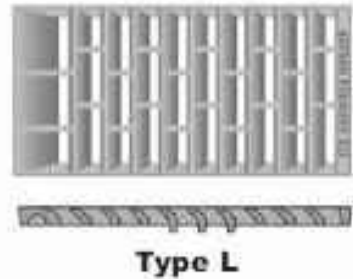
- NOTES:
- 1.) CONTRACTOR TO ADJUST ALIGNMENT OF THE UNDERDRAIN WHERE NECESSARY (UNDER THE SUPERVISION OF THE CITY INSPECTOR) BOTH HORIZONTALLY AND VERTICALLY TO AVOID GAS, WATER SERVICES AND DRIVE APRONS THAT ARE NOT SCHEDULED FOR REPLACEMENT.
  - 2.) ALL PIPE AND FITTINGS TO BE SCHEDULE 40 PVC GLUED AT CONNECTIONS.
  - 3.) AT CURVES IN ROADWAY MAXIMUM OF 45\"/>
  - 4.) THE CONTRACTOR SHALL TIE THE PROPOSED 6\"/>

**ITEM 605 - UNDERDRAIN, MISC.:  
6\"/>**



**ITEM 609 - VERTICAL CURB  
REPLACEMENT ADJACENT TO CB**  
NTS

- NOTES:
- 1.) SEE ODOT STANDARD DRAWINGS CB-3 & CB-3A



NOTES  
-SEE SCD CB-2.2. COST SHALL BE INCIDENTAL TO APPROPRIATE 611

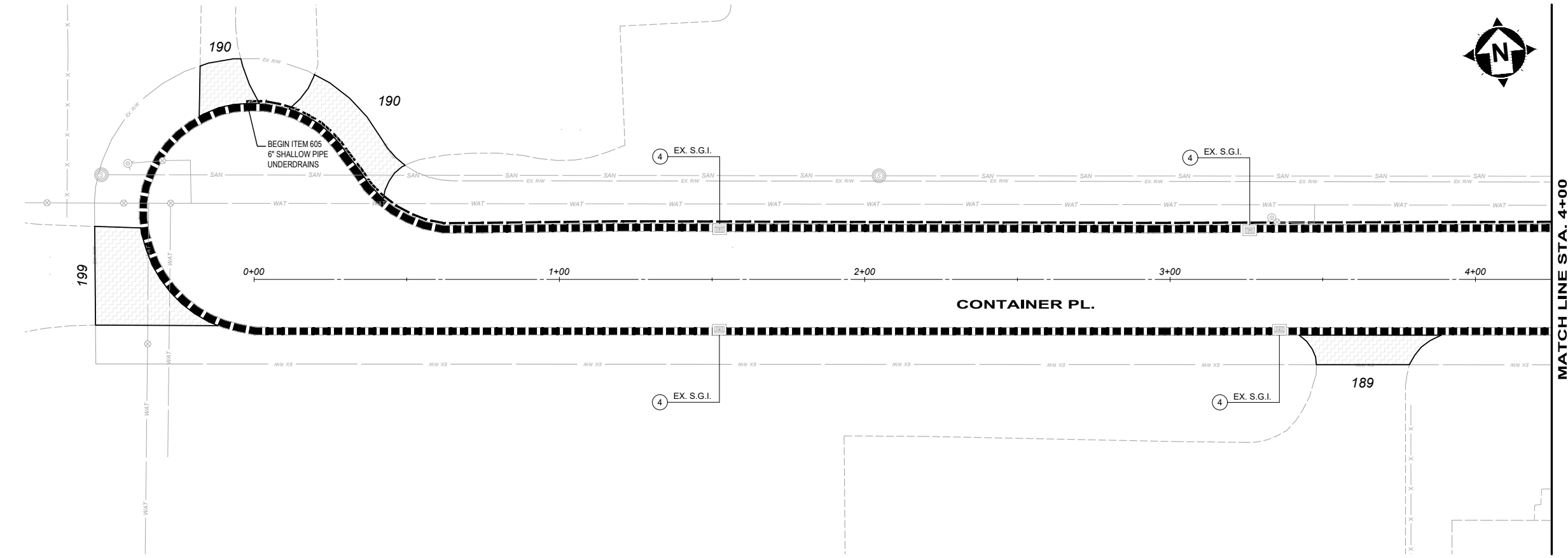
**ODOT TYPE "L" GRATE**  
NTS

ISSUED FOR:	BID	NO	REVISION	DATE
ISSUE DATE:	6/18/2025			
SCALE:	AS NOTED			
DESIGNED BY:	PMAD			
DRAWN BY:	PMAD			
CHECKED BY:	SRNG			

PROJECT NO.	33932
DISCIPLINE	CIVIL
SHEET NAME	DET
SHEET	OF
3	11





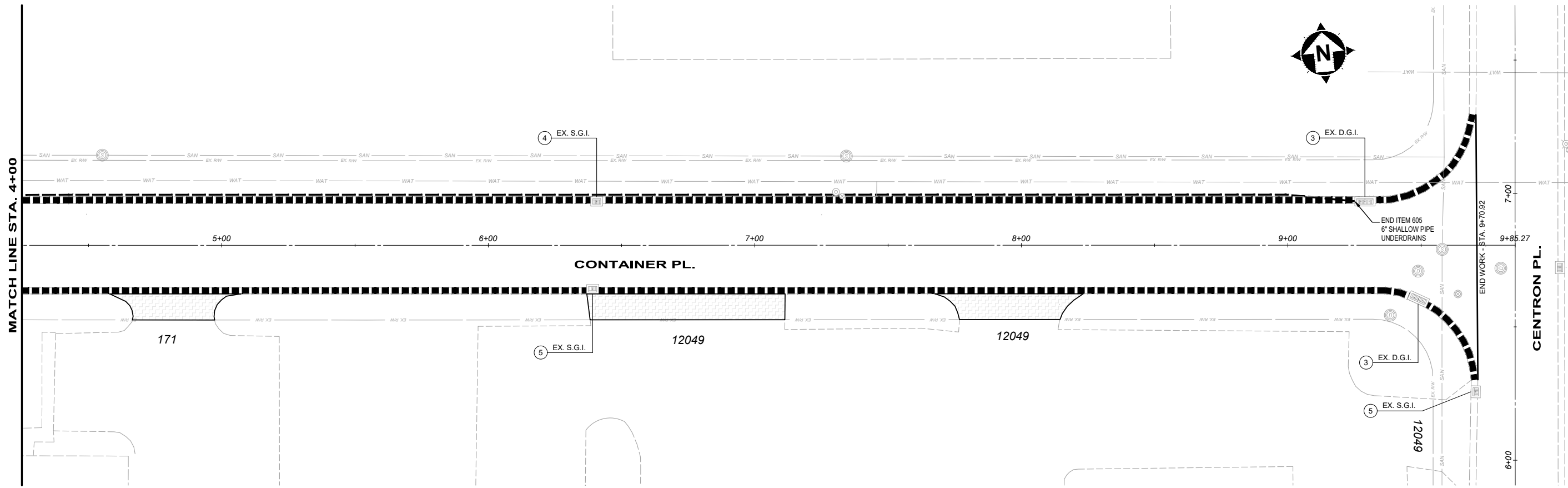
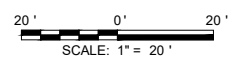


- LEGEND**
- ITEM 609 - EX. CURB & GUTTER, REMOVE AND REPLACE WITH TYPE 2 CURB & GUTTER
  - ITEM 605 - 6" SHALLOW PIPE UNDERDRAINS (707.41)
  - ITEM 448 - ASPHALT DRIVEWAY REMOVAL AND REPLACEMENT, AS PER PLAN
  - ITEM 452 - NON-REINFORCED CONCRETE PAVEMENT, MISC. 9" PLAIN PORTLAND CEMENT CONCRETE DRIVEWAY REMOVAL AND REPLACEMENT

- KEYNOTES**
- ITEM 611 - CATCH BASIN NO. 3, RECONSTRUCTED TO GRADE, INCLUDING INSTALLATION OF NEW PRECAST TOP, WITH TYPE "L" FRAME AND GRATE
  - ITEM 611 - CATCH BASIN NO. 3A, RECONSTRUCTED TO GRADE, INCLUDING INSTALLATION OF NEW PRECAST TOP, WITH TYPE "L" FRAME AND GRATE
  - ITEM 611 - INLET RECONSTRUCTED TO GRADE, D.G.I., WITH TYPE "L" FRAME AND GRATE
  - ITEM 611 - INLET RECONSTRUCTED TO GRADE, S.G.I., WITH TYPE "L" FRAME AND GRATE
  - ITEM 202 / 611 - EX CB REMOVED, INSTALL NEW ODOT CB-6

**NOTES**

1.) UNLESS OTHERWISE NOTED, THE FINAL CURB REPLACEMENT LIMITS WILL BE MARKED PRIOR TO BEGINNING CONSTRUCTION.

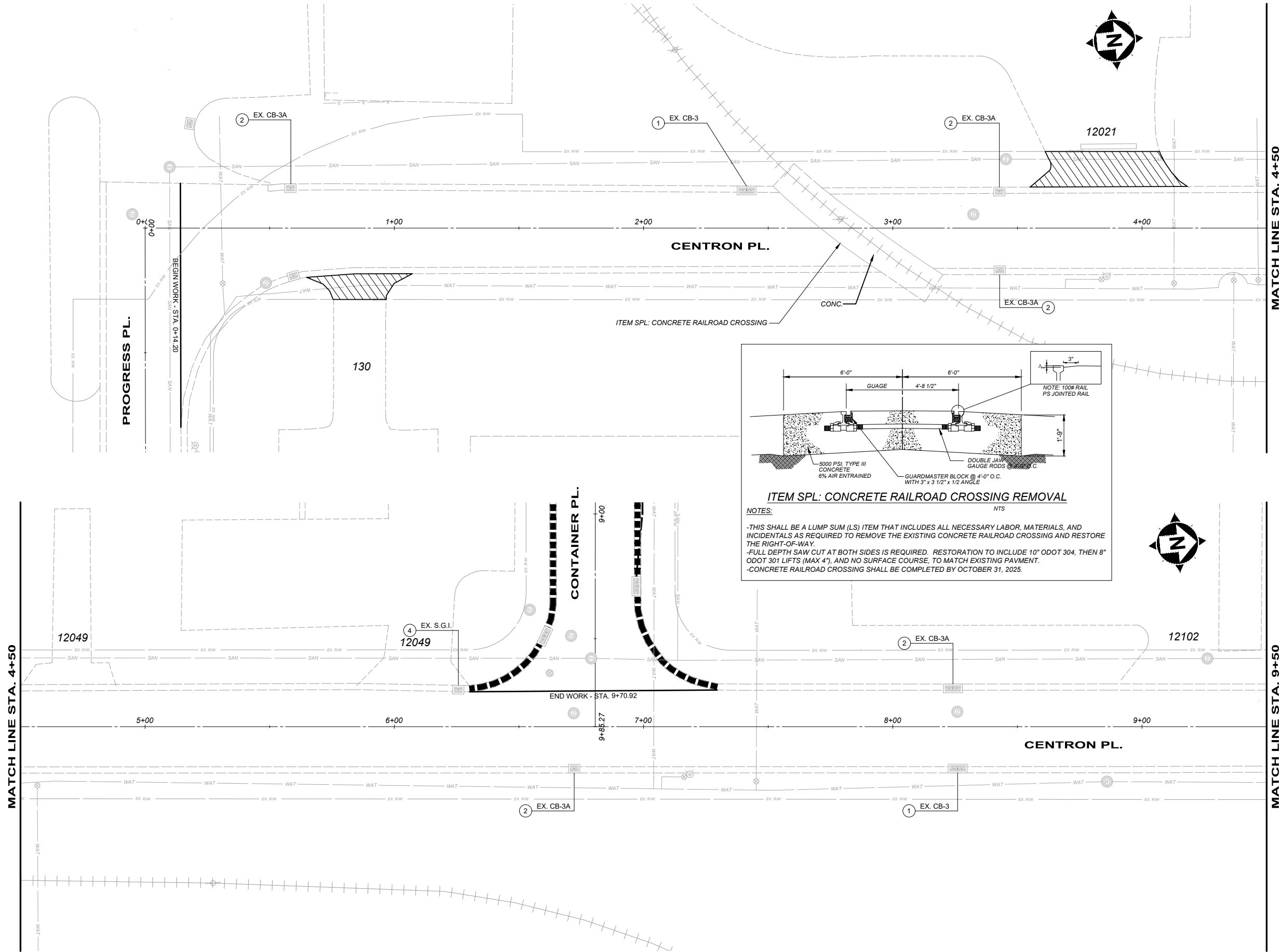


ISSUED FOR:	BID	NO	REVISION	DATE
ISSUE DATE:	6/18/2025			
SCALE:	AS NOTED			
DESIGNED BY:	PMAD			
DRAWN BY:	PMAD			
CHECKED BY:	SRNG			

SPRINGDALE INDUSTRIAL PARK  
CONCRETE REPAIRS & CATCH  
BASIN RECONSTRUCTION  
CITY OF SPRINGDALE - HAMILTON COUNTY, OHIO

CONTAINER PLACE

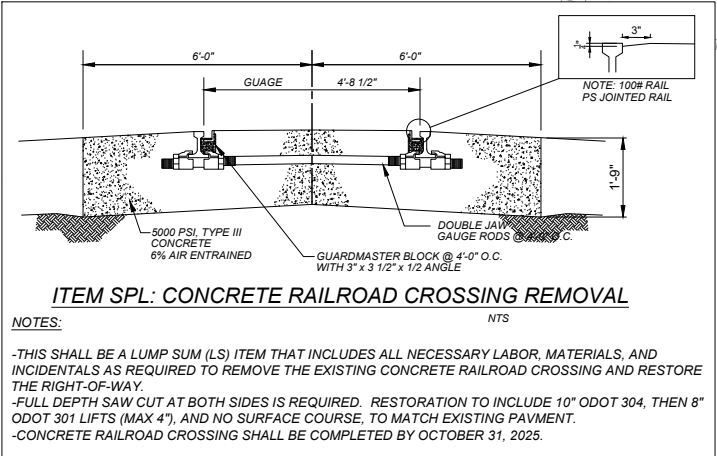
PROJECT NO. <b>33932</b>	
DISCIPLINE <b>CIVIL</b>	
SHEET NAME <b>C1</b>	
SHEET <b>5</b>	OF <b>11</b>



- LEGEND**
- ITEM 448 - ASPHALT DRIVEWAY REMOVAL AND REPLACEMENT, AS PER PLAN
  - ITEM 452 - NON-REINFORCED CONCRETE PAVEMENT, MISC. 9" PLAIN PORTLAND CEMENT CONCRETE DRIVEWAY REMOVAL AND REPLACEMENT

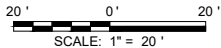
- KEYNOTES**
- ITEM 611 - CATCH BASIN NO. 3, RECONSTRUCTED TO GRADE, INCLUDING INSTALLATION OF NEW PRECAST TOP, WITH TYPE "L" FRAME AND GRATE
  - ITEM 611 - CATCH BASIN NO. 3A, RECONSTRUCTED TO GRADE, INCLUDING INSTALLATION OF NEW PRECAST TOP, WITH TYPE "L" FRAME AND GRATE
  - ITEM 611 - INLET RECONSTRUCTED TO GRADE, D.G.I., WITH TYPE "L" FRAME AND GRATE
  - ITEM 611 - INLET RECONSTRUCTED TO GRADE, S.G.I., WITH TYPE "L" FRAME AND GRATE

- NOTES**
- UNLESS OTHERWISE NOTED, THE FINAL CURB REPLACEMENT LIMITS WILL BE MARKED PRIOR TO BEGINNING CONSTRUCTION.



**NOTES:**

- THIS SHALL BE A LUMP SUM (LS) ITEM THAT INCLUDES ALL NECESSARY LABOR, MATERIALS, AND INCIDENTALS AS REQUIRED TO REMOVE THE EXISTING CONCRETE RAILROAD CROSSING AND RESTORE THE RIGHT-OF-WAY.
- FULL DEPTH SAW CUT AT BOTH SIDES IS REQUIRED. RESTORATION TO INCLUDE 10" ODOT 304, THEN 8" ODOT 301 LIFTS (MAX 4"), AND NO SURFACE COURSE, TO MATCH EXISTING PAVEMENT.
- CONCRETE RAILROAD CROSSING SHALL BE COMPLETED BY OCTOBER 31, 2025.



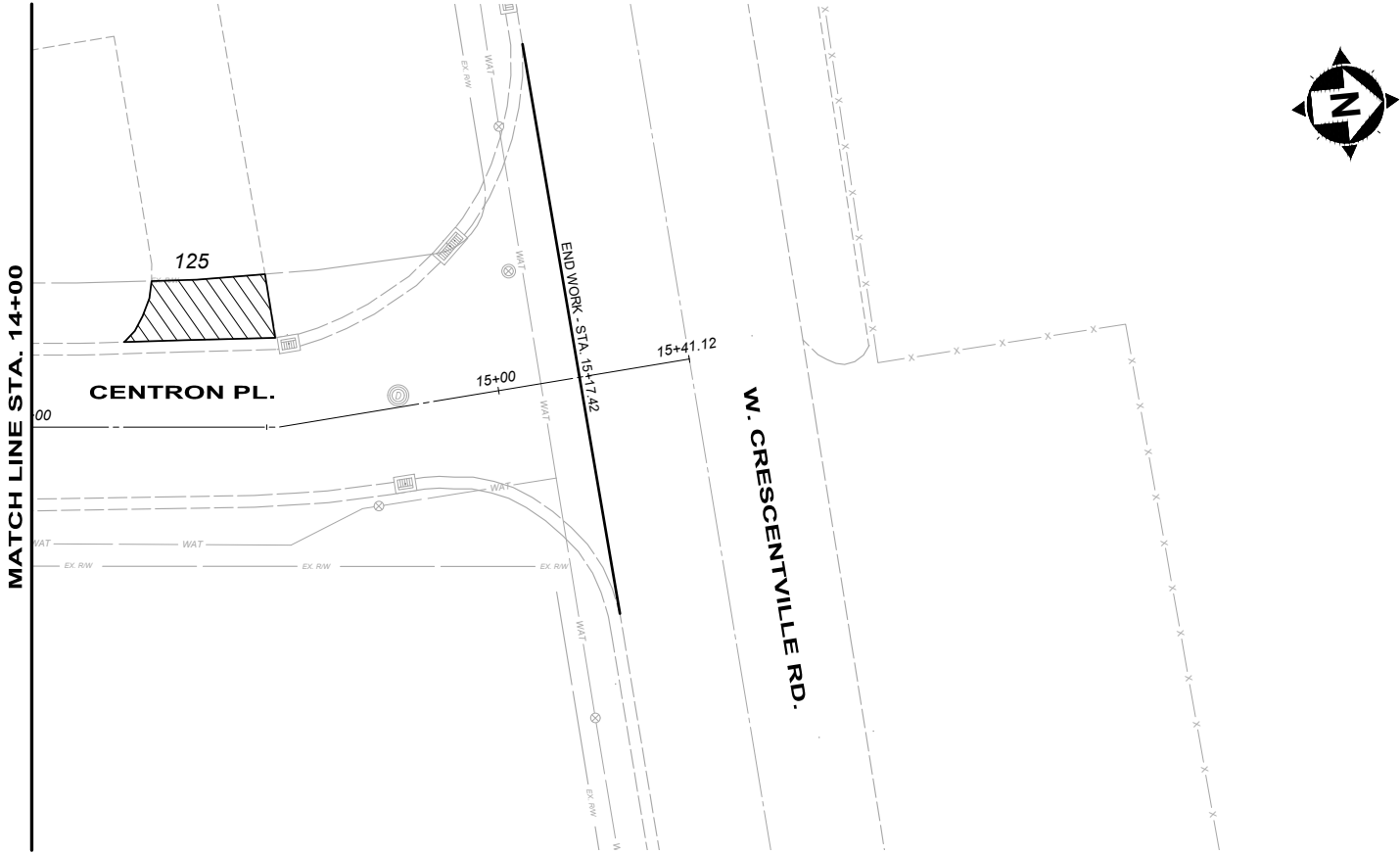
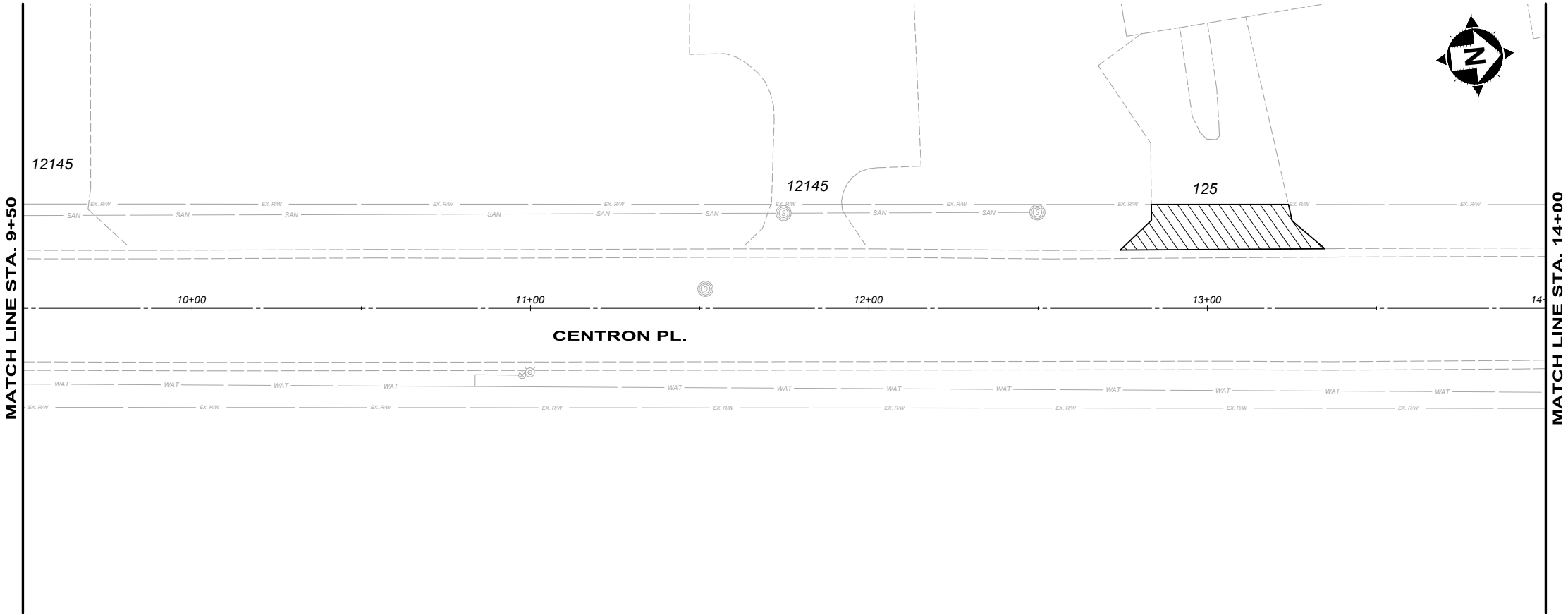
SPRINGDALE INDUSTRIAL PARK  
CONCRETE REPAIRS & CATCH  
BASIN RECONSTRUCTION  
CITY OF SPRINGDALE - HAMILTON COUNTY, OHIO

CENTRON PLACE

PROJECT NO.	
33932	
DISCIPLINE	
CIVIL	
SHEET NAME	
C2	
SHEET	OF
6	11

ISSUED FOR:	BID	NO	REVISION	DATE
ISSUE DATE:	6/18/2025			
SCALE:	AS NOTED			
DESIGNED BY:	PMAD			
DRAWN BY:	PMAD			
CHECKED BY:	SRIG			

verdantas



LEGEND

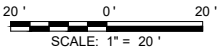
- ITEM 448 - ASPHALT DRIVEWAY REMOVAL AND REPLACEMENT, AS PER PLAN
- ITEM 452 - NON-REINFORCED CONCRETE PAVEMENT, MISC. 9" PLAIN PORTLAND CEMENT CONCRETE DRIVEWAY REMOVAL AND REPLACEMENT

KEYNOTES

1. ITEM 611 - CATCH BASIN NO. 3, RECONSTRUCTED TO GRADE, INCLUDING INSTALLATION OF NEW PRECAST TOP, WITH TYPE "L" FRAME AND GRATE
2. ITEM 611 - CATCH BASIN NO. 3A, RECONSTRUCTED TO GRADE, INCLUDING INSTALLATION OF NEW PRECAST TOP, WITH TYPE "L" FRAME AND GRATE
3. ITEM 611 - INLET RECONSTRUCTED TO GRADE, D.G.I., WITH TYPE "L" FRAME AND GRATE
4. ITEM 611 - INLET RECONSTRUCTED TO GRADE, S.G.I., WITH TYPE "L" FRAME AND GRATE

NOTES

- 1.) UNLESS OTHERWISE NOTED, THE FINAL CURB REPLACEMENT LIMITS WILL BE MARKED PRIOR TO BEGINNING CONSTRUCTION.



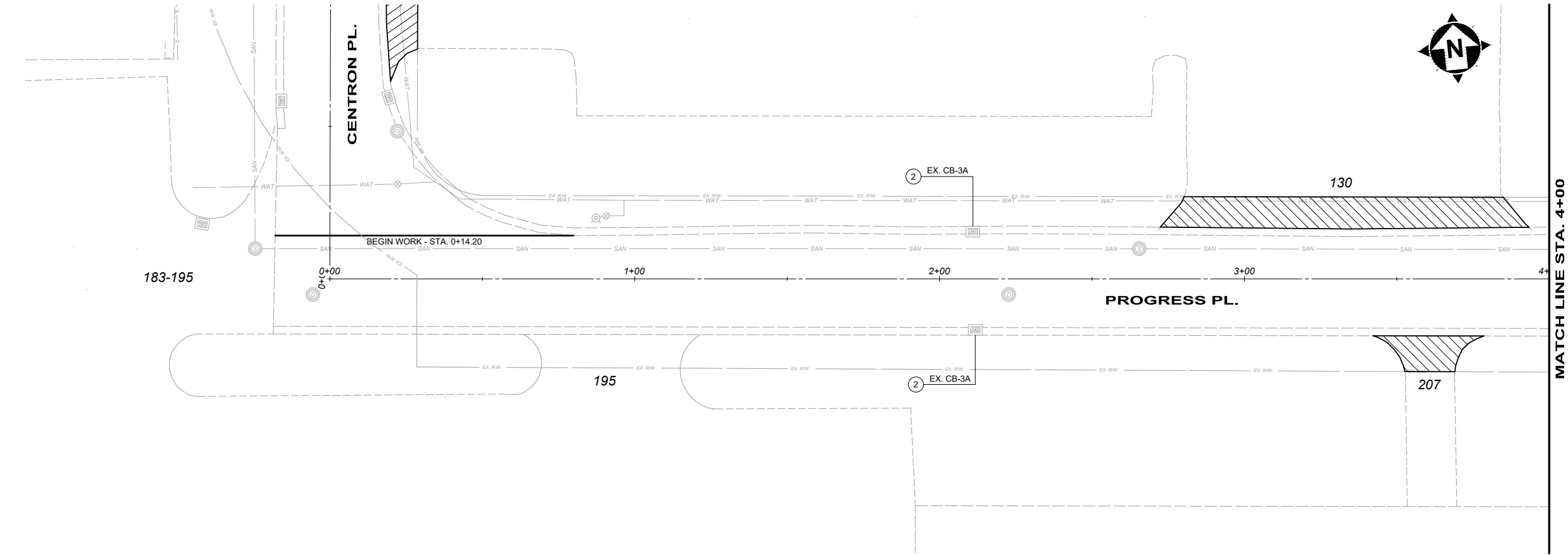
verdantas

ISSUED FOR:	BID	NO	REVISION	DATE
ISSUE DATE:	6/18/2025			
SCALE:	AS NOTED			
DESIGNED BY:	PMAD			
DRAWN BY:	PMAD			
CHECKED BY:	SRIG			

SPRINGDALE INDUSTRIAL PARK  
CONCRETE REPAIRS & CATCH  
BASIN RECONSTRUCTION  
CITY OF SPRINGDALE - HAMILTON COUNTY, OHIO

CENTRON PLACE

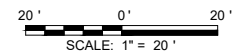
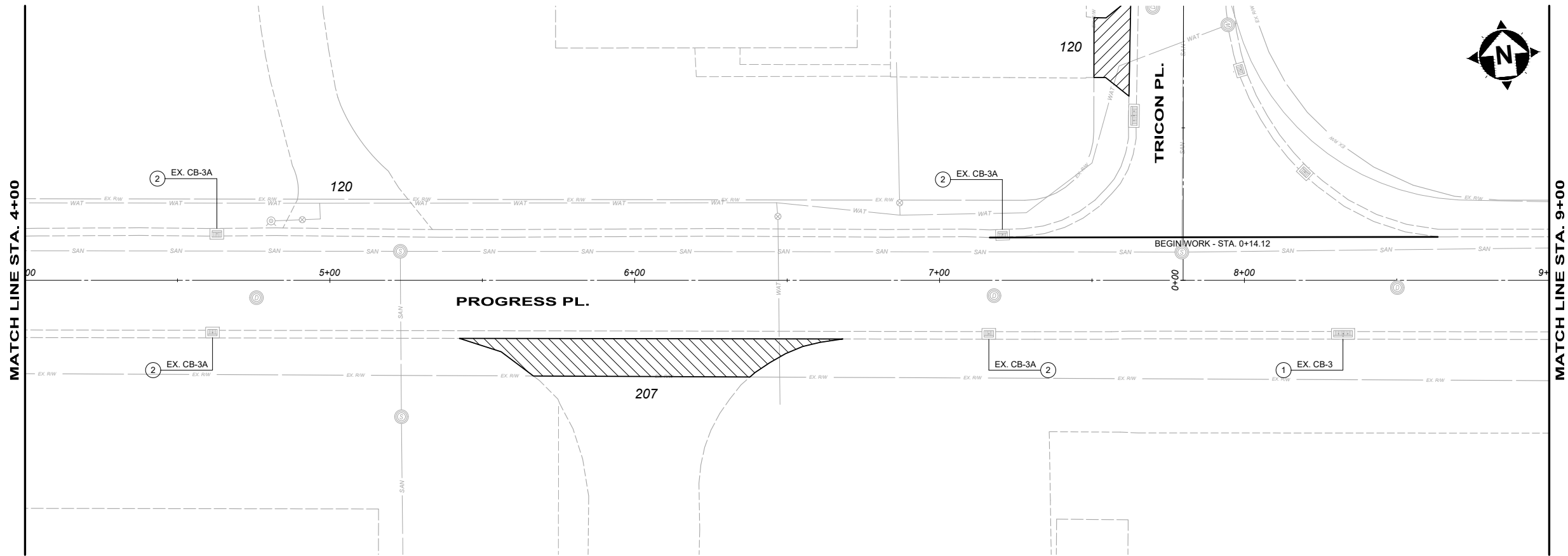
PROJECT NO. 33932	
DISCIPLINE CIVIL	
SHEET NAME C3	
SHEET 7	OF 11



- LEGEND**
- ITEM 448 - ASPHALT DRIVEWAY REMOVAL AND REPLACEMENT, AS PER PLAN
  - ITEM 452 - NON-REINFORCED CONCRETE PAVEMENT, MISC. 9" PLAIN PORTLAND CEMENT CONCRETE DRIVEWAY REMOVAL AND REPLACEMENT

- KEYNOTES**
- ITEM 611 - CATCH BASIN NO. 3, RECONSTRUCTED TO GRADE, INCLUDING INSTALLATION OF NEW PRECAST TOP, WITH TYPE "L" FRAME AND GRATE
  - ITEM 611 - CATCH BASIN NO. 3A, RECONSTRUCTED TO GRADE, INCLUDING INSTALLATION OF NEW PRECAST TOP, WITH TYPE "L" FRAME AND GRATE
  - ITEM 611 - INLET RECONSTRUCTED TO GRADE, D.G.I., WITH TYPE "L" FRAME AND GRATE
  - ITEM 611 - INLET RECONSTRUCTED TO GRADE, S.G.I., WITH TYPE "L" FRAME AND GRATE

- NOTES**
- UNLESS OTHERWISE NOTED, THE FINAL CURB REPLACEMENT LIMITS WILL BE MARKED PRIOR TO BEGINNING CONSTRUCTION.



SPRINGDALE INDUSTRIAL PARK  
CONCRETE REPAIRS & CATCH  
BASIN RECONSTRUCTION  
CITY OF SPRINGDALE - HAMILTON COUNTY, OHIO

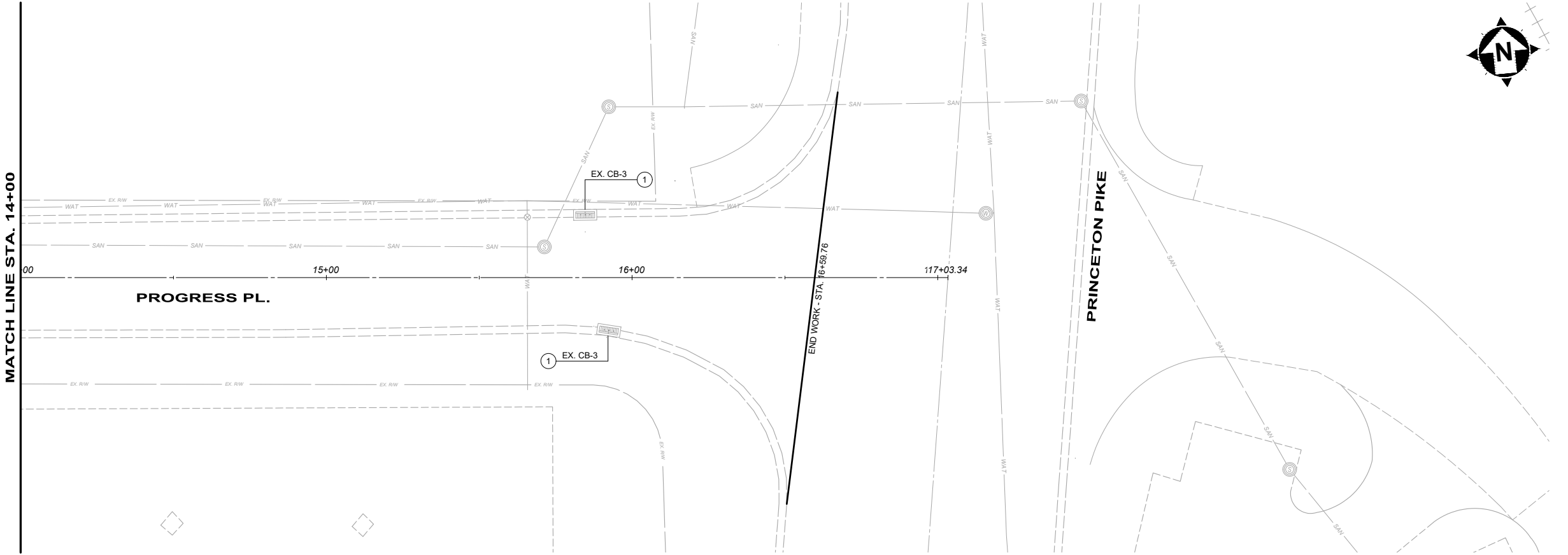
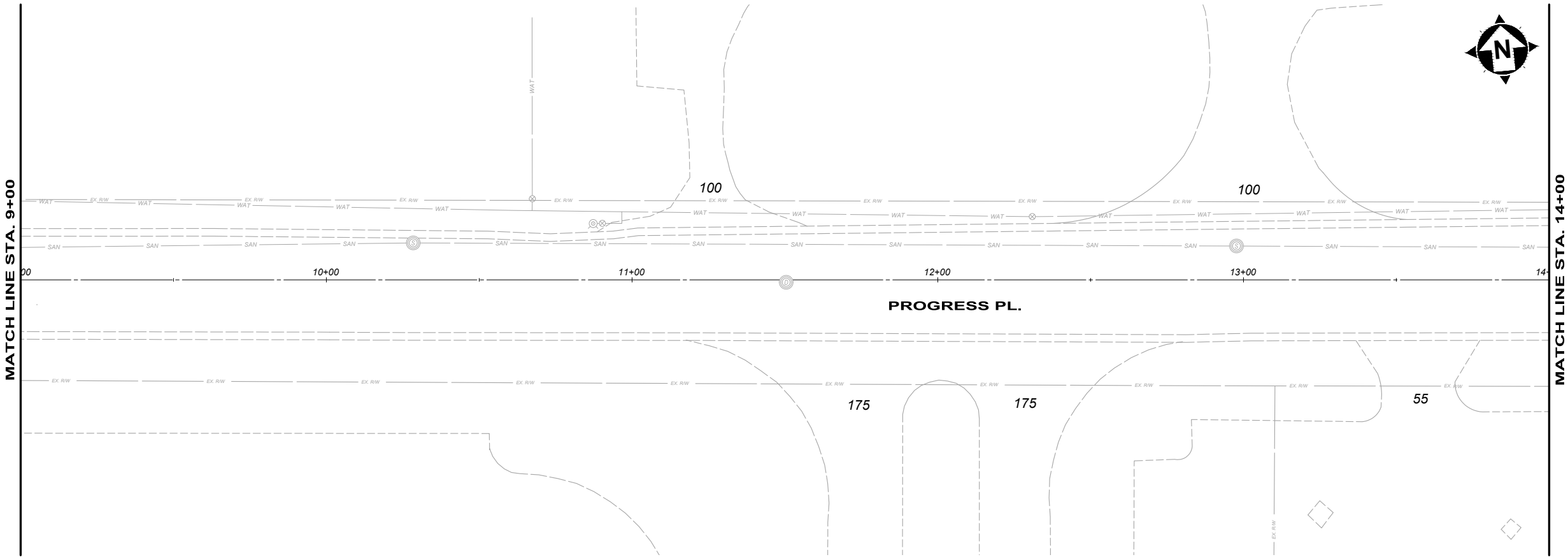
PROGRESS PLACE

PROJECT NO.	
33932	
DISCIPLINE	
CIVIL	
SHEET NAME	
C4	
SHEET	OF
8	11

ISSUED FOR:	BID	NO	REVISION	DATE
ISSUE DATE:	6/18/2025			
SCALE:	AS NOTED			
DESIGNED BY:	PMAD			
DRAWN BY:	PMAD			
CHECKED BY:	SRG			

verdantas

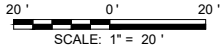




- LEGEND**
- ITEM 448 - ASPHALT DRIVEWAY REMOVAL AND REPLACEMENT, AS PER PLAN
  - ITEM 452 - NON-REINFORCED CONCRETE PAVEMENT, MISC: 9" PLAIN PORTLAND CEMENT CONCRETE DRIVEWAY REMOVAL AND REPLACEMENT

- KEYNOTES**
- ITEM 611 - CATCH BASIN NO. 3, RECONSTRUCTED TO GRADE, INCLUDING INSTALLATION OF NEW PRECAST TOP, WITH TYPE "L" FRAME AND GRATE
  - ITEM 611 - CATCH BASIN NO. 3A, RECONSTRUCTED TO GRADE, INCLUDING INSTALLATION OF NEW PRECAST TOP, WITH TYPE "L" FRAME AND GRATE
  - ITEM 611 - INLET RECONSTRUCTED TO GRADE, D.G.I., WITH TYPE "L" FRAME AND GRATE
  - ITEM 611 - INLET RECONSTRUCTED TO GRADE, S.G.I., WITH TYPE "L" FRAME AND GRATE

- NOTES**
- 1.) UNLESS OTHERWISE NOTED, THE FINAL CURB REPLACEMENT LIMITS WILL BE MARKED PRIOR TO BEGINNING CONSTRUCTION.



SPRINGDALE INDUSTRIAL PARK  
CONCRETE REPAIRS & CATCH  
BASIN RECONSTRUCTION  
CITY OF SPRINGDALE - HAMILTON COUNTY, OHIO

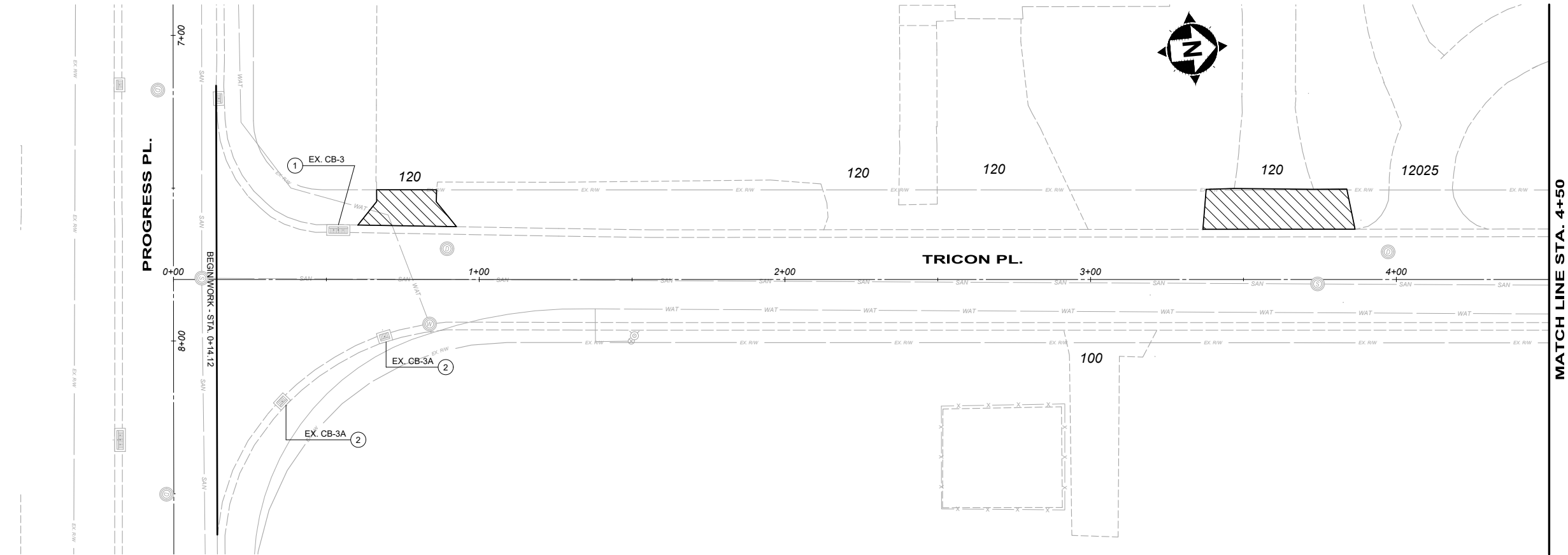
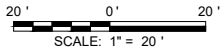
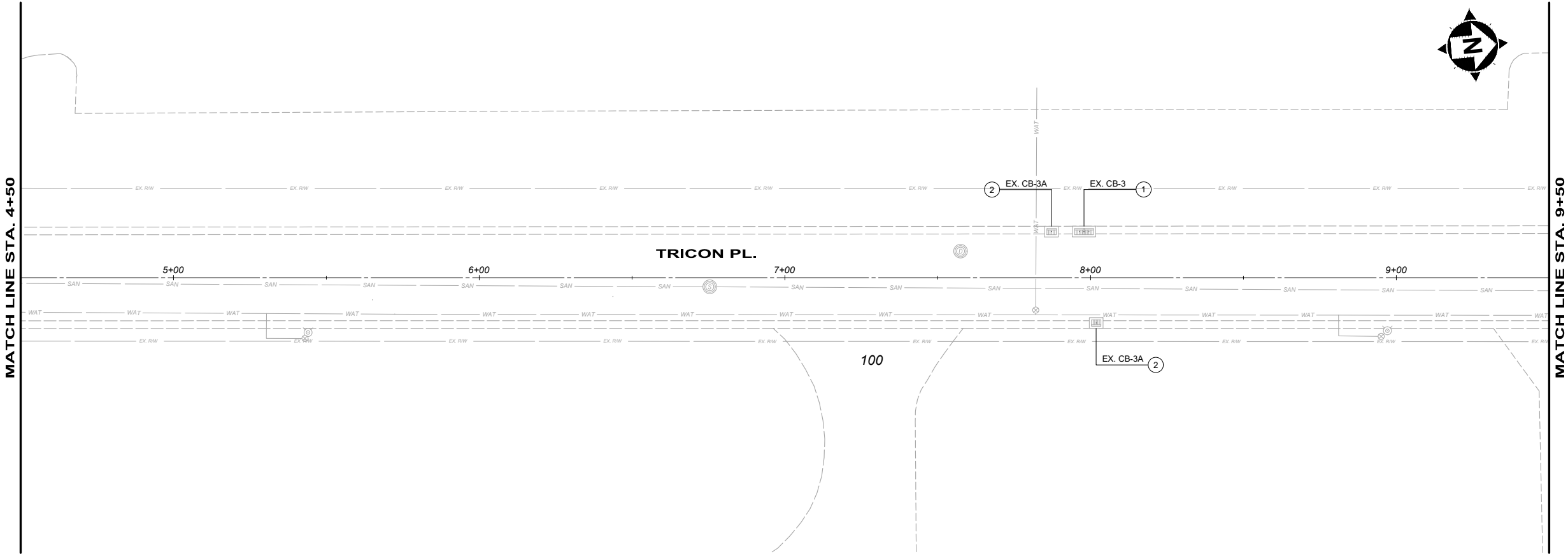
PROGRESS PLACE

PROJECT NO.	
33932	
DISCIPLINE	
CIVIL	
SHEET NAME	
C5	
SHEET	OF
9	11

ISSUED FOR:	BID	NO	REVISION	DATE
ISSUE DATE:	6/18/2025			
SCALE:	AS NOTED			
DESIGNED BY:	PMAD			
DRAWN BY:	PMAD			
CHECKED BY:	SRIG			

verdantas

MATCH LINE STA. 4+50



- LEGEND**
- ITEM 448 - ASPHALT DRIVEWAY REMOVAL AND REPLACEMENT, AS PER PLAN
  - ITEM 452 - NON-REINFORCED CONCRETE PAVEMENT, MISC: 9" PLAIN PORTLAND CEMENT CONCRETE DRIVEWAY REMOVAL AND REPLACEMENT
- KEYNOTES**
- ITEM 611 - CATCH BASIN NO. 3, RECONSTRUCTED TO GRADE, INCLUDING INSTALLATION OF NEW PRECAST TOP, WITH TYPE "L" FRAME AND GRATE
  - ITEM 611 - CATCH BASIN NO. 3A, RECONSTRUCTED TO GRADE, INCLUDING INSTALLATION OF NEW PRECAST TOP, WITH TYPE "L" FRAME AND GRATE
  - ITEM 611 - INLET RECONSTRUCTED TO GRADE, D.G.I., WITH TYPE "L" FRAME AND GRATE
  - ITEM 611 - INLET RECONSTRUCTED TO GRADE, S.G.I., WITH TYPE "L" FRAME AND GRATE
- NOTES**
- UNLESS OTHERWISE NOTED, THE FINAL CURB REPLACEMENT LIMITS WILL BE MARKED PRIOR TO BEGINNING CONSTRUCTION.

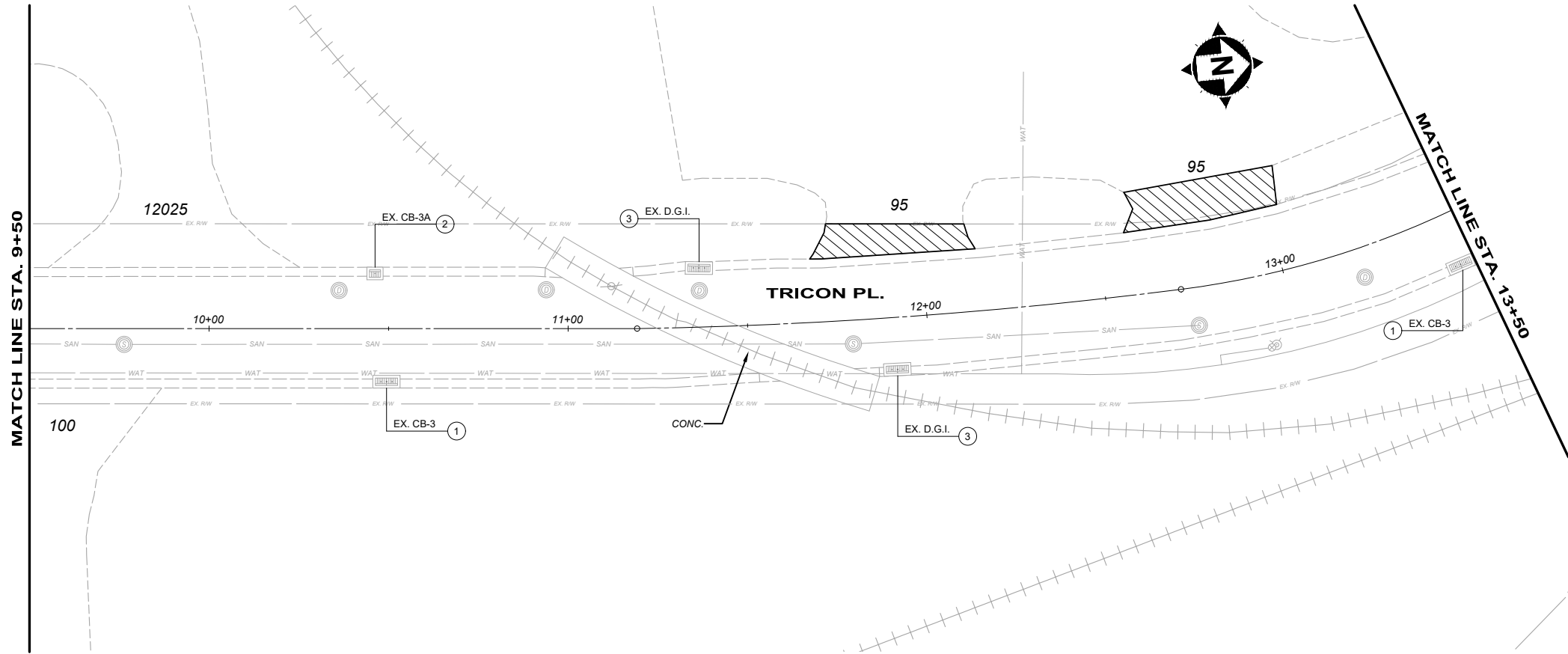
SPRINGDALE INDUSTRIAL PARK  
CONCRETE REPAIRS & CATCH  
BASIN RECONSTRUCTION  
CITY OF SPRINGDALE - HAMILTON COUNTY, OHIO

TRICON PLACE

PROJECT NO.	
33932	
DISCIPLINE	
CIVIL	
SHEET NAME	
C6	
SHEET	OF
10	11

ISSUED FOR:	BID	NO	REVISION	DATE
ISSUE DATE:	6/18/2025			
SCALE:	PMAD			
DESIGNED BY:	PMAD			
DRAWN BY:	PMAD			
CHECKED BY:	SRIG			

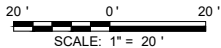
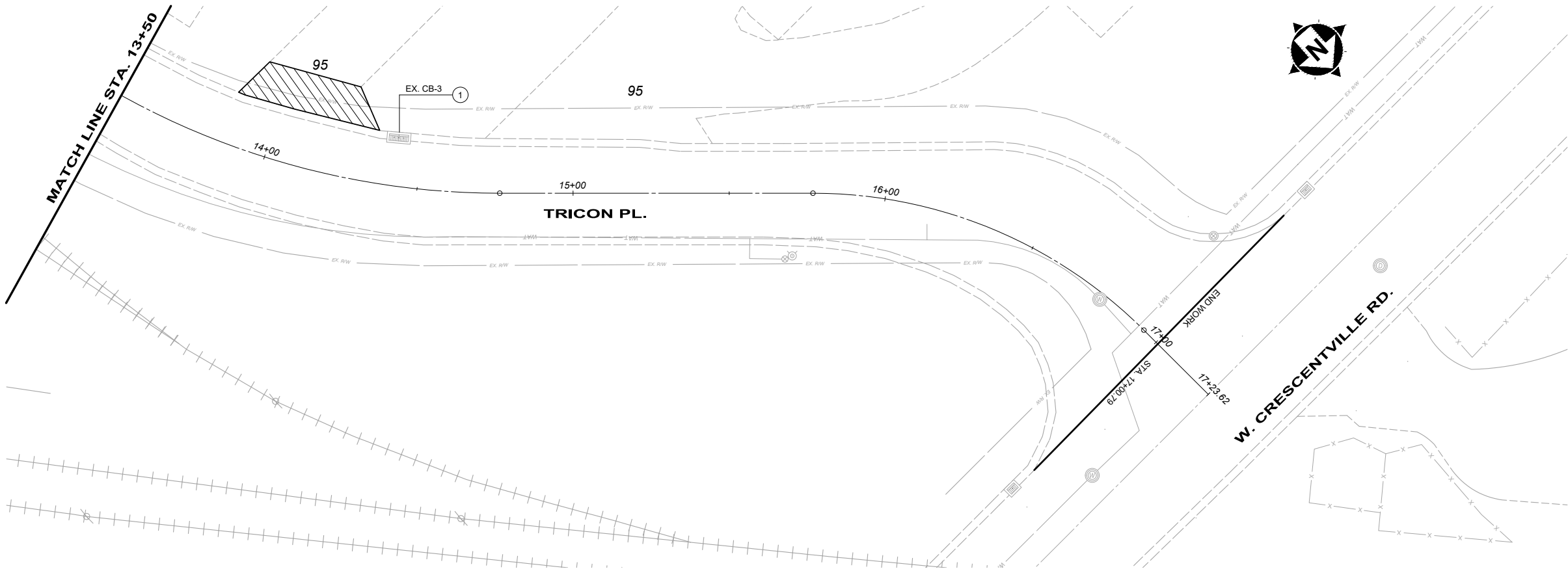
verdantas



- LEGEND**
- ITEM 448 - ASPHALT DRIVEWAY REMOVAL AND REPLACEMENT, AS PER PLAN
  - ITEM 452 - NON-REINFORCED CONCRETE PAVEMENT, MISC. 9" PLAIN PORTLAND CEMENT CONCRETE DRIVEWAY REMOVAL AND REPLACEMENT

- KEYNOTES**
- ITEM 611 - CATCH BASIN NO. 3, RECONSTRUCTED TO GRADE, INCLUDING INSTALLATION OF NEW PRECAST TOP, WITH TYPE "L" FRAME AND GRATE
  - ITEM 611 - CATCH BASIN NO. 3A, RECONSTRUCTED TO GRADE, INCLUDING INSTALLATION OF NEW PRECAST TOP, WITH TYPE "L" FRAME AND GRATE
  - ITEM 611 - INLET RECONSTRUCTED TO GRADE, D.G.I., WITH TYPE "L" FRAME AND GRATE
  - ITEM 611 - INLET RECONSTRUCTED TO GRADE, S.G.I., WITH TYPE "L" FRAME AND GRATE

- NOTES**
- UNLESS OTHERWISE NOTED, THE FINAL CURB REPLACEMENT LIMITS WILL BE MARKED PRIOR TO BEGINNING CONSTRUCTION.



SPRINGDALE INDUSTRIAL PARK  
CONCRETE REPAIRS & CATCH  
BASIN RECONSTRUCTION  
CITY OF SPRINGDALE - HAMILTON COUNTY, OHIO

TRICON PLACE

PROJECT NO.	
33932	
DISCIPLINE	
CIVIL	
SHEET NAME	
C7	
SHEET	OF
11	11

ISSUED FOR:	BID	NO	REVISION	DATE
ISSUE DATE:	6/18/2025			
SCALE:	PMAD			
DESIGNED BY:	PMAD			
DRAWN BY:	PMAD			
CHECKED BY:	SRIG			

verdantas