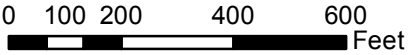


EXHIBIT 2 - VILLAGE OF FAIRPORT HARBOR  
LCDU QUESTIONNAIRE RESULTS



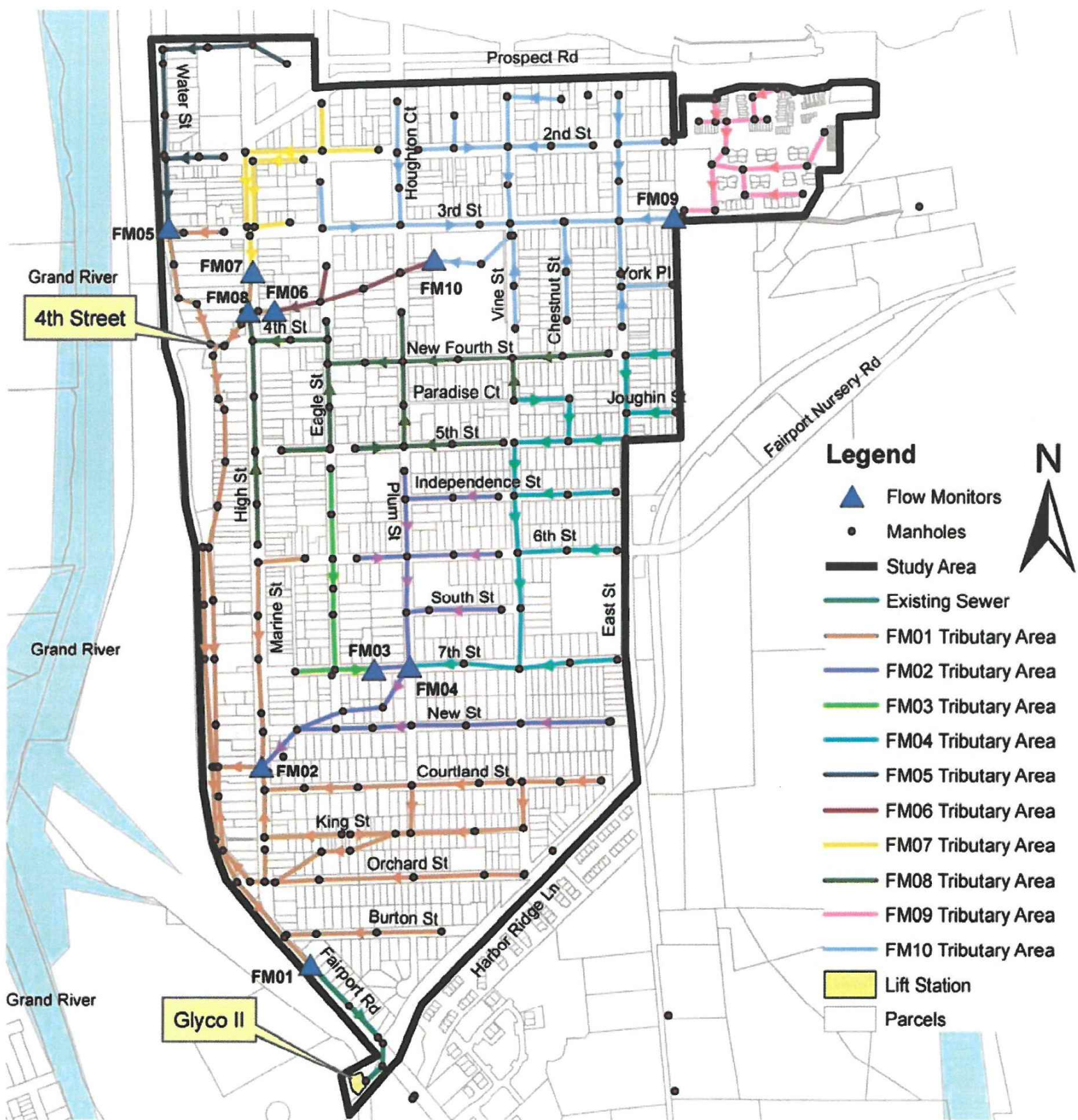
- SANITARY MANHOLE
- SANITARY SEWER PIPE
- PILOT AREA
- YARD FLOODING
- STREET FLOODING
- BASEMENT FLOODING

LCDU - FAIRPORT HARBOR - I/I INVESTIGATION

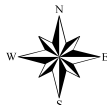


**BURGESS & NIPLE**

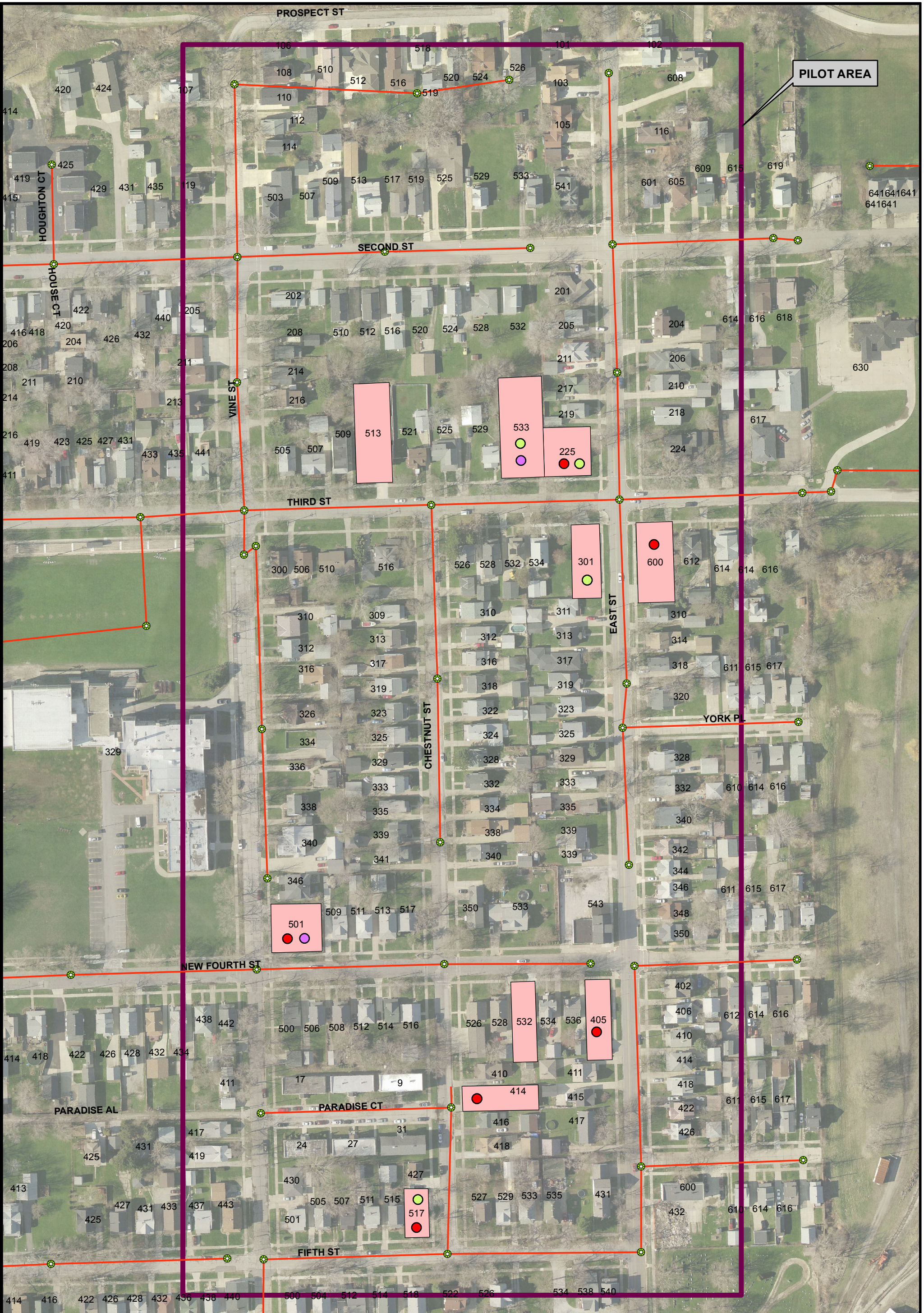




Rank	Individual Flow Monitor	Calculated Individual Peak I/I (gpd)	Individual Basin Ave. DWF (gpd)	Peaking Factor
1	FM08	1,693,286	45,210	37.5
2	FM10	2,022,603	78,078	25.9
3	FM06	1,053,230	67,103	15.7
4	FM07	605,190	41,094	14.7
5	FM04	880,238	62,457	14.1
6	FM02	612,929	58,169	10.5
7	FM03	325,611	32,134	10.1
8	FM09	121,111	12,540	9.7
9	FM01	1,425,794	308,503	4.6
10	FM05	178,833	68,731	2.6







**EXHIBIT 4 - VILLAGE OF FAIRPORT HARBOR  
PRIVATE SANITARY LATERAL  
TESTING LOCATIONS AND RESULTS**

- PRIVATE I/I TESTING CONDUCTED
- TREE ROOTS DETECTED
- INFLOW FROM FOUNDATION DRAINS DETECTED
- INFLOW FROM ABANDONED DOWNSPOUTS DETECTED

PILOT AREA

N

W

E

S

0

40

80

160

240

Feet

**BURGESS & NIPLE**



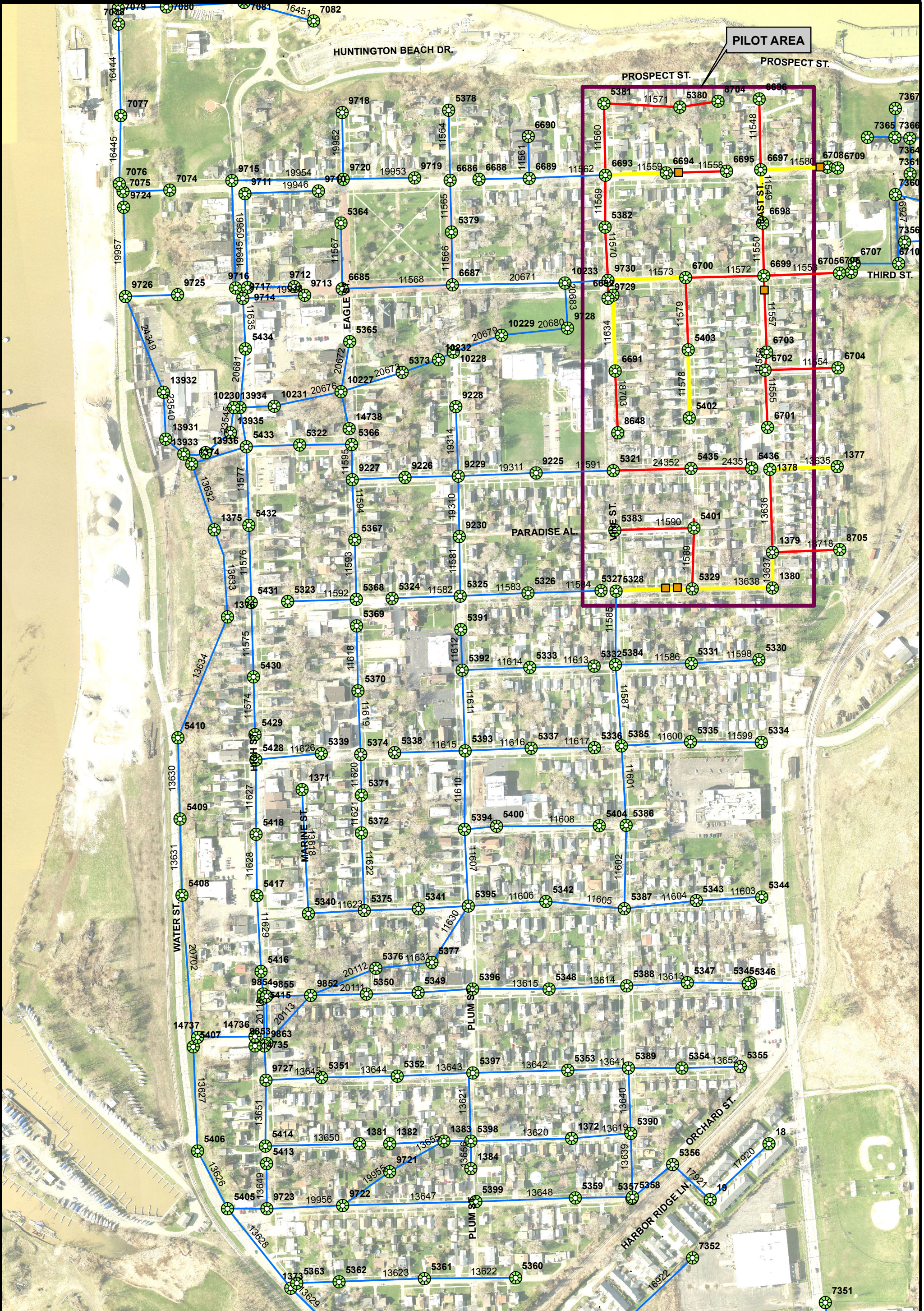


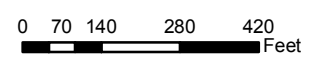
EXHIBIT 5 - VILLAGE OF FAIRPORT HARBOR  
SANITARY SEWER SYSTEM  
RECOMMENDED REPAIRS



- SANITARY MANHOLE
- SANITARY SEWER REVIEWED
- SANITARY SEWER OUTSIDE PILOT AREA
- SANITARY SEWER LINING RECOMMENDED

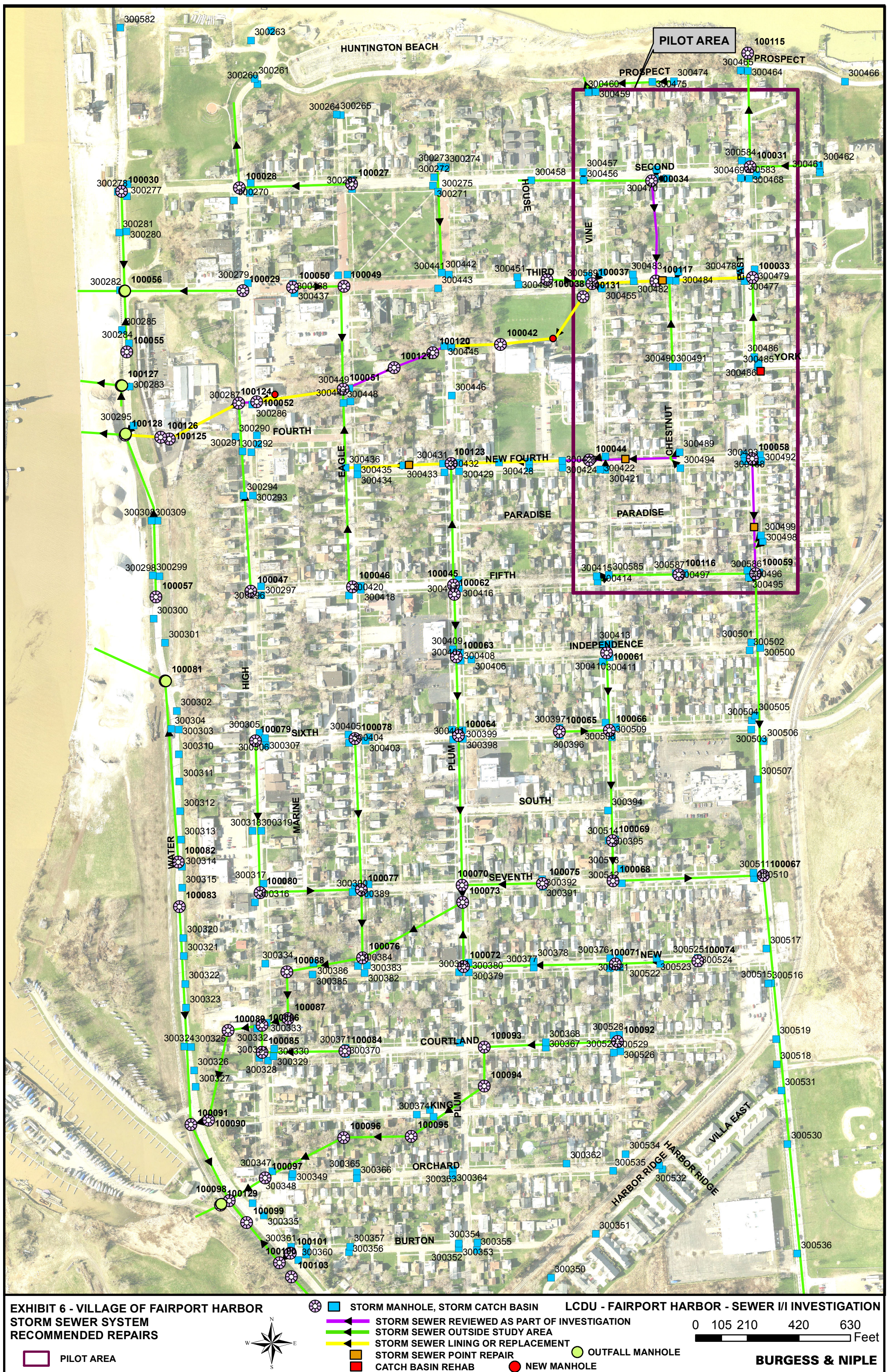
LCDU - FAIRPORT HARBOR - SEWER I/I INVESTIGATION

- PILOT AREA
- SANITARY SEWER POINT REPAIR

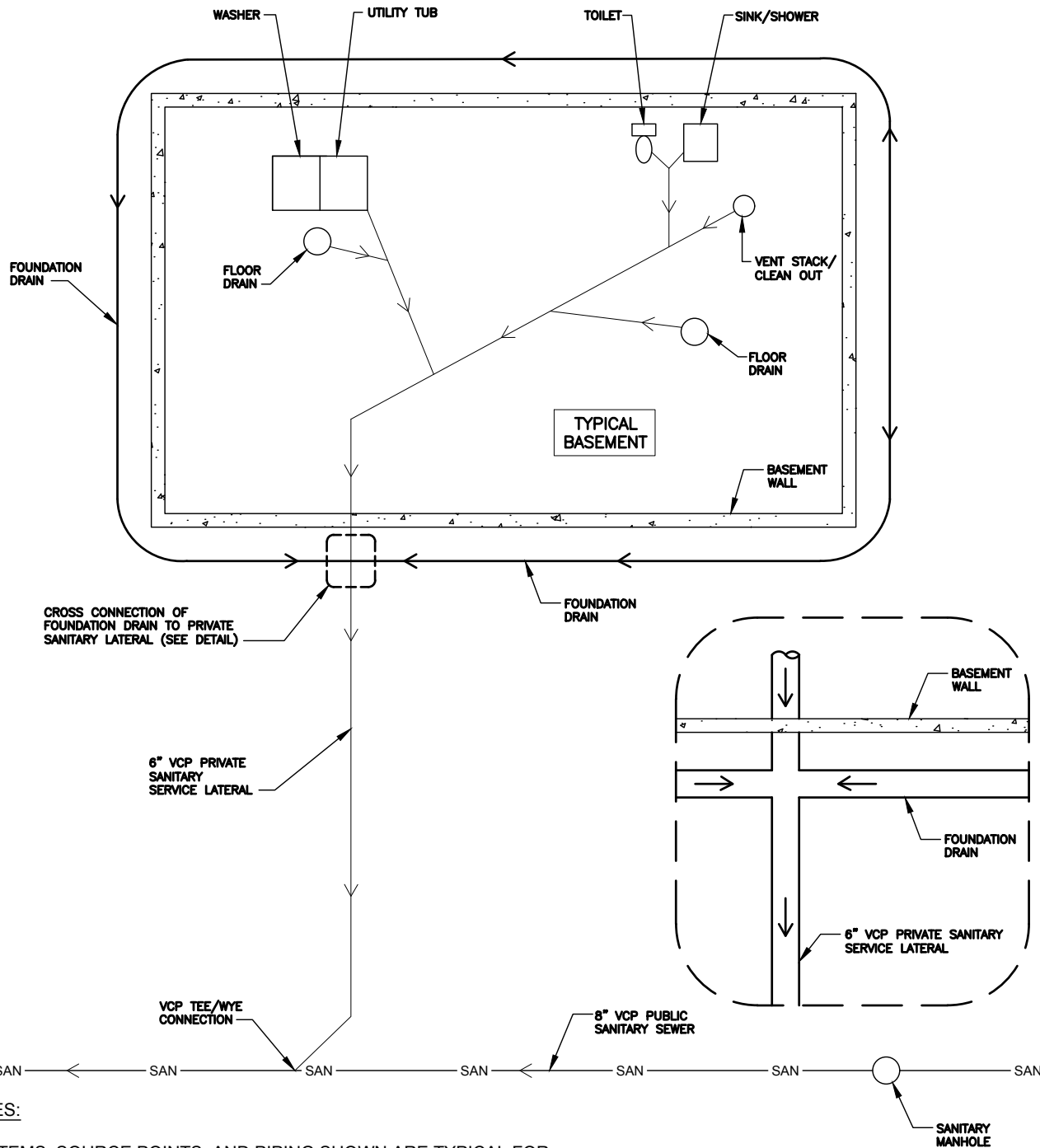


**BURGESS & NIPLE**









**NOTES:**

1. ITEMS, SOURCE POINTS, AND PIPING SHOWN ARE TYPICAL FOR BASEMENTS OBSERVED. ACTUAL CONDITIONS AND CONFIGURATIONS WILL VARY FROM HOUSE TO HOUSE.
2. THE ONLY CLEAN-OUTS OBSERVED WERE LOCATED ON VENT STACKS. NO OUTSIDE CLEAN-OUTS WERE DETECTED DURING PRIVATE SANITARY LATERAL INSPECTION.
3. TYPICAL DOWNSPOUTS DISCHARGED TO SPLASH BLOCKS OR PIPED TO SIDEWALK/TREE LAWN. DURING TESTING TWO HOUSES WERE IDENTIFIED AS HAVING DOWNSPOUTS PREVIOUSLY TIED INTO THE PRIVATE SANITARY LATERAL.

**SKETCH 1  
TYP. BASEMENT PLUMBING**

VILLAGE OF FAIRPORT HARBOR  
LCDU - SEWER I/I INVESTIGATION

**BURGESS & NIPLE, INC.**