

VILLAGE OF NEWTOWN
HAMILTON COUNTY, OHIO
LITTLE DRY RUN RD
IMPROVEMENTS

32982

VILLAGE OF NEWTOWN OFFICIALS

MAYOR

MARK KOBASUK

PUBLIC WORKS

CHUCK MORGAN

CITY COUNCIL MEMBERS

TRACY BOONE

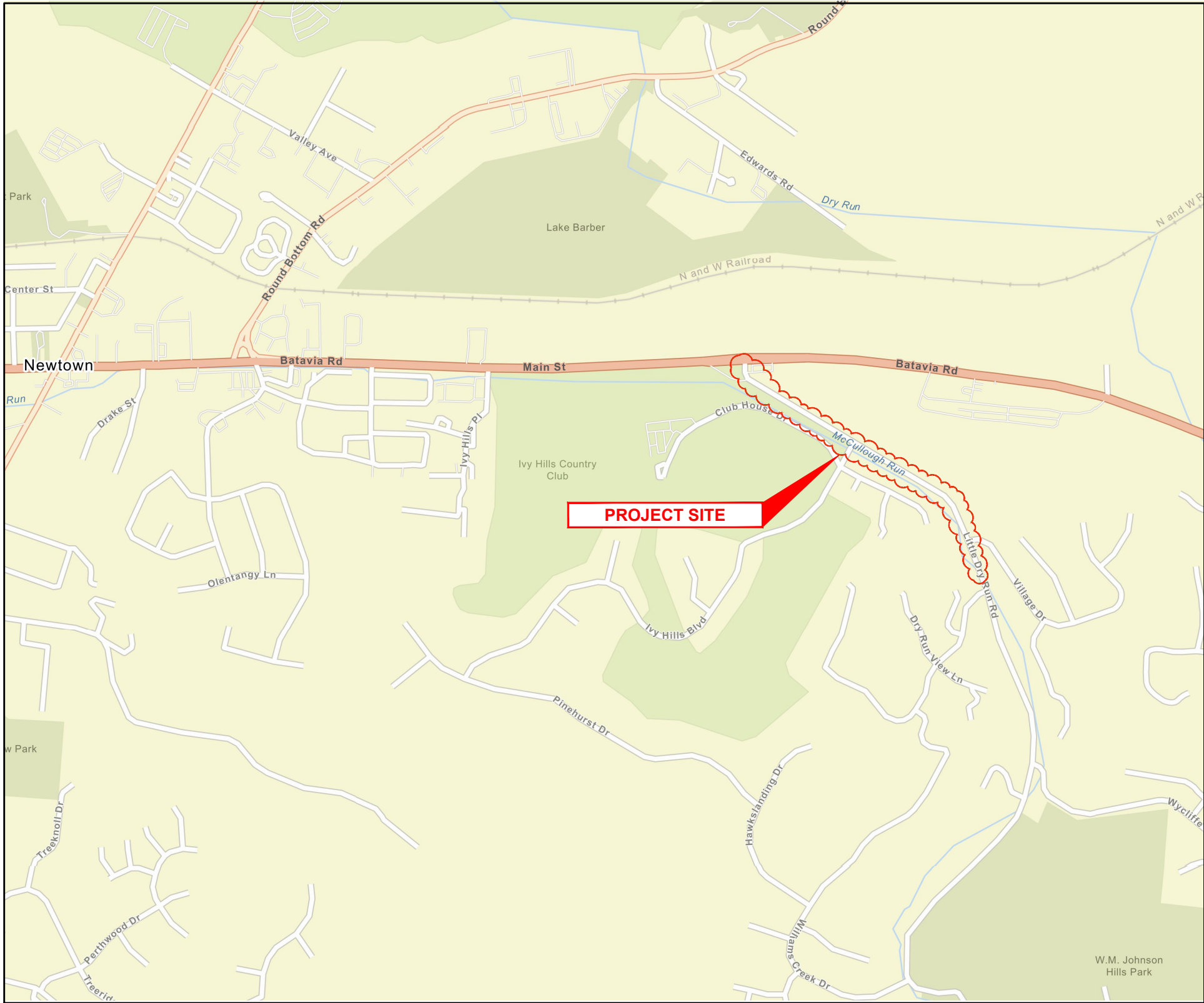
TERRY FAIRLEY

SARAH DONOHUE

PEG QUALLEN

JERRY SCHWAB

JEFF DRESCHER



VICINITY MAP

N.T.S

INDEX OF SHEETS		
PAGE NO.	DWG NAME	SHEET TITLE
1	TTL	TITLE SHEET
2	GN01	GENERAL NOTES & LEGEND
3	DTL1	DETAILS
4	C01	LITTLE DRY RUN RD STA. 0+00 - 9+50
5	C02	LITTLE DRY RUN RD STA. 9+50 - 19+00
6	C03	LITTLE DRY RUN RD STA. 19+00 - END

ODOT SCD REFERENCES		
BP-5.1	CONCRETE CURBS AND COMBINED CURB AND GUTTER	1/17/2025
BP-7.1	NEW CURB RAMPS	1/17/2025
CB-3	CATCH BASIN NO. 3	7/16/2021
TC-71.10	WORD AND SYMBOL PAVEMENT MARKINGS	4/21/2023

Notify

OHIO811.org

Before You Dig

Notify online using Remote Ticket Entry

To call dial 8-1-1 or 800-362-2764

O.D.O.T SPECIFICATIONS

THE LATEST STANDARD SPECIFICATIONS OF THE OHIO DEPARTMENT OF TRANSPORTATION, INCLUDING CHANGES AND SUPPLEMENTAL SPECIFICATIONS THERETO AND VILLAGE OF NEWTOWN ENGINEERING DEPARTMENT REQUIREMENTS SHALL GOVERN THIS IMPROVEMENT.

SOURCE OF BOUNDARY INFORMATION

THE BOUNDARY INFORMATION SHOWN ON THESE PLANS IS BASED UPON HAMILTON COUNTY G.I.S. MAPPING AND DOES NOT REPRESENT AN ACTUAL FIELD BOUNDARY SURVEY BY CT CONSULTANTS, INC.



LITTLE DRY RUN RD IMPROVEMENTS
VILLAGE OF NEWTOWN
- HAMILTON COUNTY, OH -

TITLE SHEET

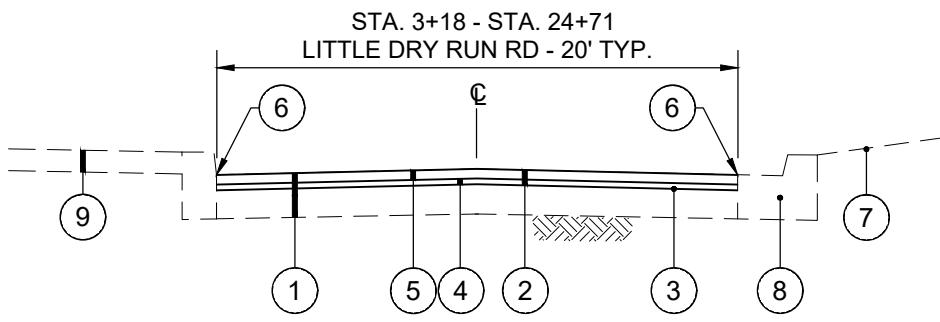
PROJECT NO.	
32982	
DISCIPLINE	
CIVIL	
SHEET NAME	
TTL	
SHEET	OF
1	6

FRANK TWEHUES

[illegible]

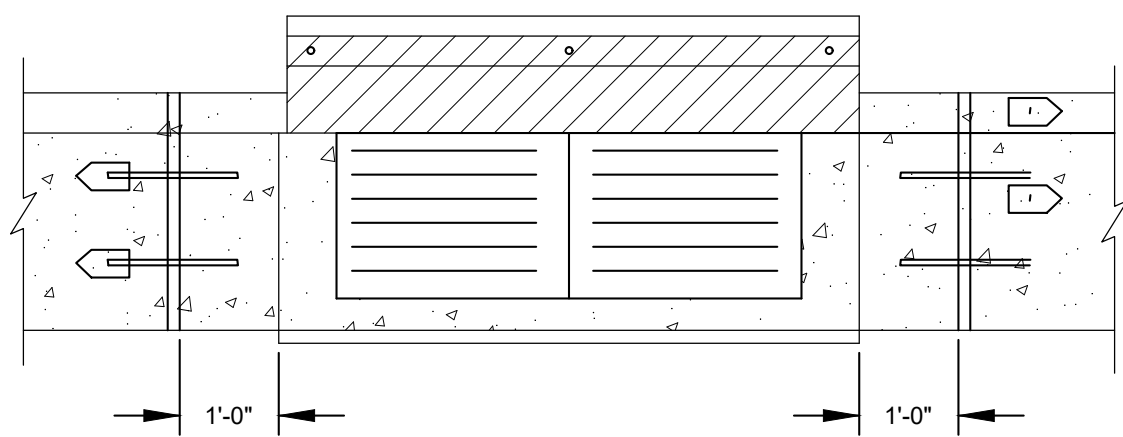
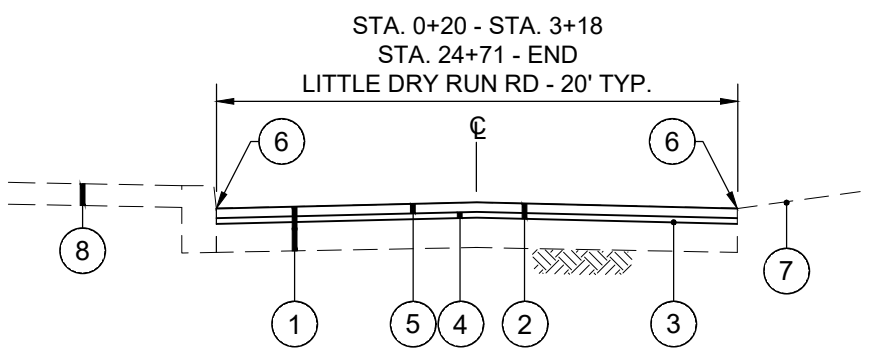
- 1 EXISTING ASPHALT PAVEMENT
2 ASPHALT MILLING (2.5" TYP.)
3 TACK COAT @ 0.1 GAL/SY
4 1" ASPHALT LEVELING COURSE, TYPE 1, PG 64-22
5 1-1/2" ASPHALT COURSE SURFACE, TYPE 1, PG64-22 W/ ARAMID FIBER REINFORCEMENT (FORTA-FI OR ACE FIBER)
6 APPLY HOT ASPHALT SEALER WHERE ASPHALT MEETS CONCRETE CURB (INCIDENTAL TO ITEM)
7 DO NOT DISTURB YARD AREA
8 *CURB REPLACEMENT, CONCRETE VERTICAL CURB & GUTTER PER DETAIL
9 *INTEGRAL CURB AND WALK REPLACEMENT, SEE DETAIL

**TYPICAL PAVEMENT RESURFACING SECTION W/
CURB AND GUTTER REPLACEMENT**
N.T.S



- 1 EXISTING ASPHALT PAVEMENT
2 ASPHALT MILLING (2.5" TYP.)
3 TACK COAT @ 0.1 GAL/SY
4 1" ASPHALT LEVELING COURSE, TYPE 1, PG 64-22
5 1-1/2" ASPHALT COURSE SURFACE, TYPE 1, PG64-22 W/ ARAMID FIBER REINFORCEMENT (FORTA-FI OR ACE FIBER)
6 APPLY HOT ASPHALT SEALER WHERE ASPHALT MEETS CONCRETE CURB (INCIDENTAL TO ITEM)
7 DO NOT DISTURB YARD AREA
8 *INTEGRAL CURB AND WALK REPLACEMENT, SEE DETAIL

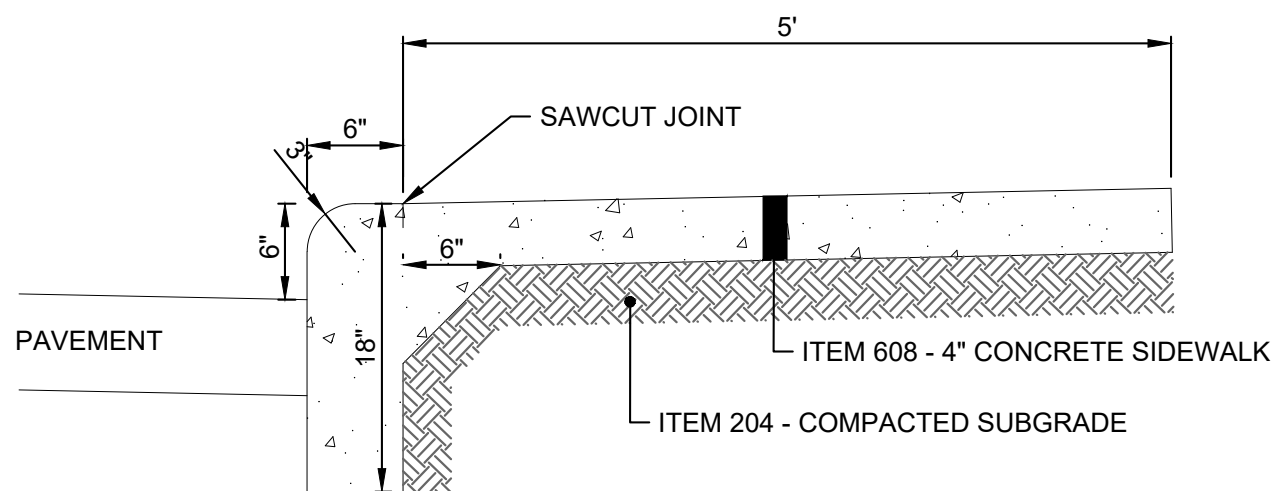
TYPICAL PAVEMENT RESURFACING SECTION
N.T.S



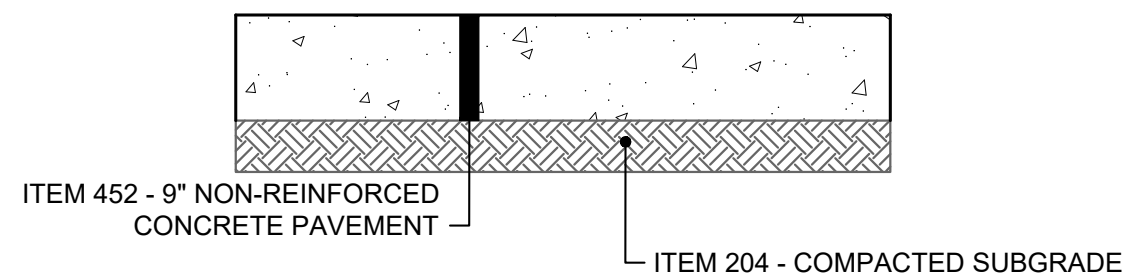
NOTES:

- 1.) SEE ODOT STANDARD DRAWINGS CB-3 & CB-3A

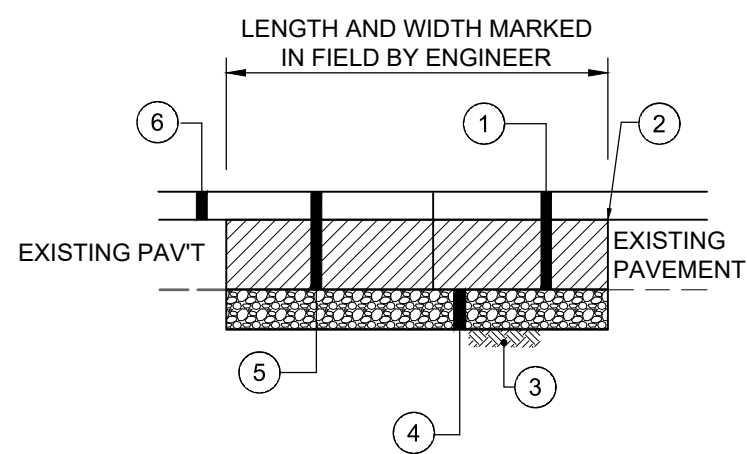
CURB REPLACEMENT ADJACENT TO CATCH BASIN
N.T.S



ITEM 608 - INTEGRAL CURB AND WALK
N.T.S



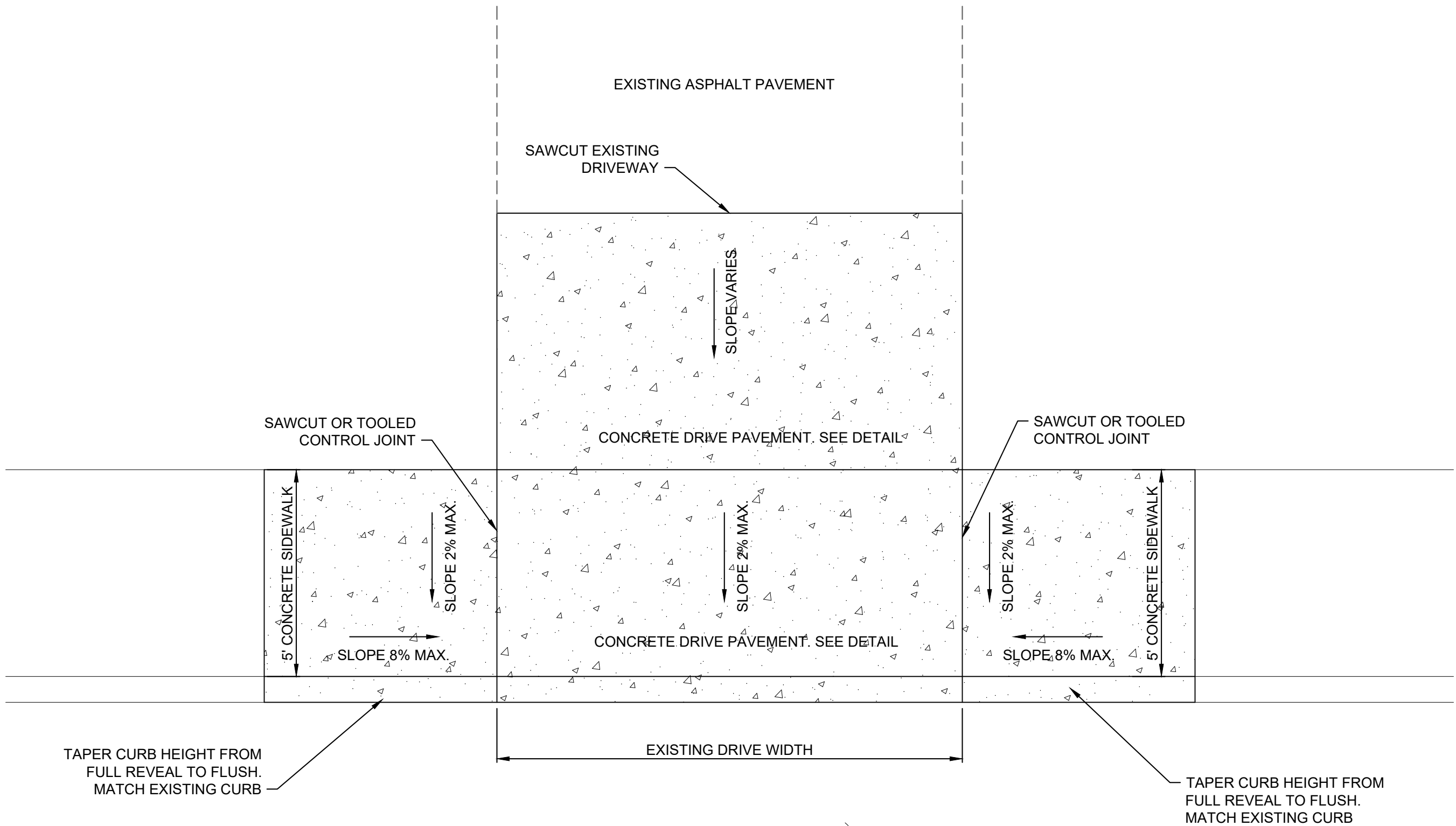
ITEM 452 - CONCRETE DRIVE PAVEMENT
N.T.S



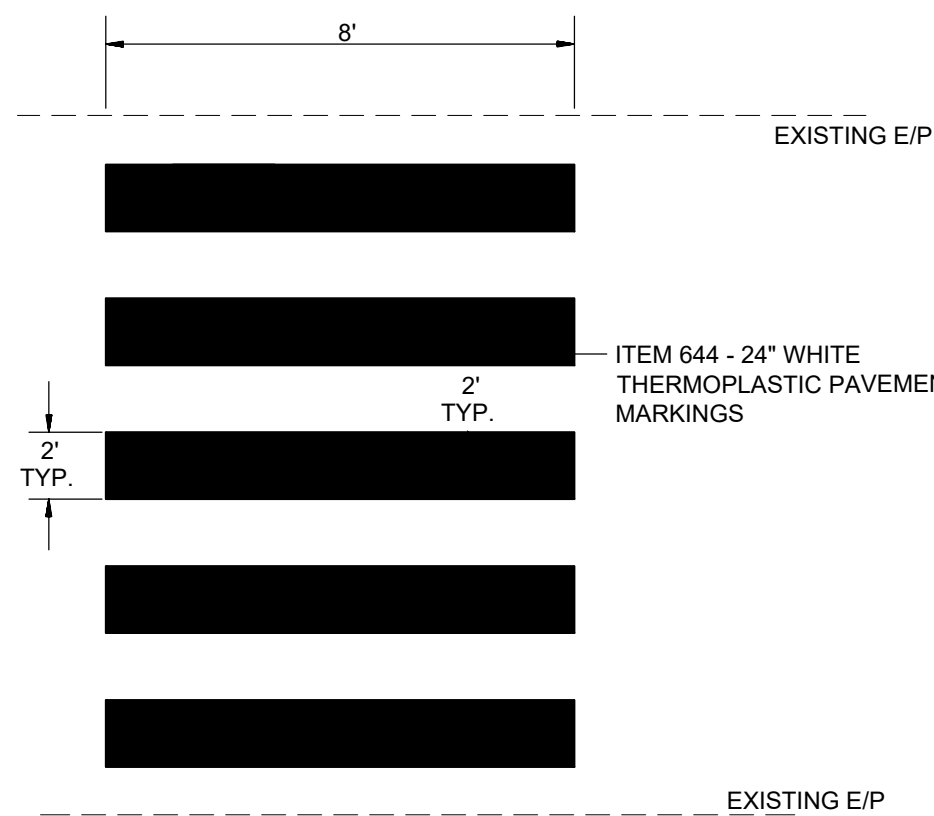
- 1 EX. CONCRETE, ASPHALT, GRAVEL OR EARTEN MATERIAL TO BE REMOVED
2 FULL DEPTH SAWCUT ALL SIDES
3 COMPACTED SUBGRADE (INCIDENTAL)
4 6" DGA FOR SUBGRADE REPAIR (SEPARATE PAY ITEM). TO BE USED AS DIRECTED BY THE ENGINEER. UNIT PRICE BID INCLUDES DGA BASE, REMOVAL AND DISPOSAL OF EXISTING MATERIAL AND COMPACTION OF SUBGRADE
5 9" BITUMINOUS CONCRETE BASE (2 - 4 1/2" LIFTS)
6 PAVEMENT RESURFACING PER TYPICAL SECTION (SEPARATE PAY ITEM)

* NOTE: THIS IS A CONTINGENCY ITEM TO BE USED ONLY AT THE DIRECTION OF THE ENGINEER. LIMITS TO BE MARKED IN THE FIELD BY THE ENGINEER

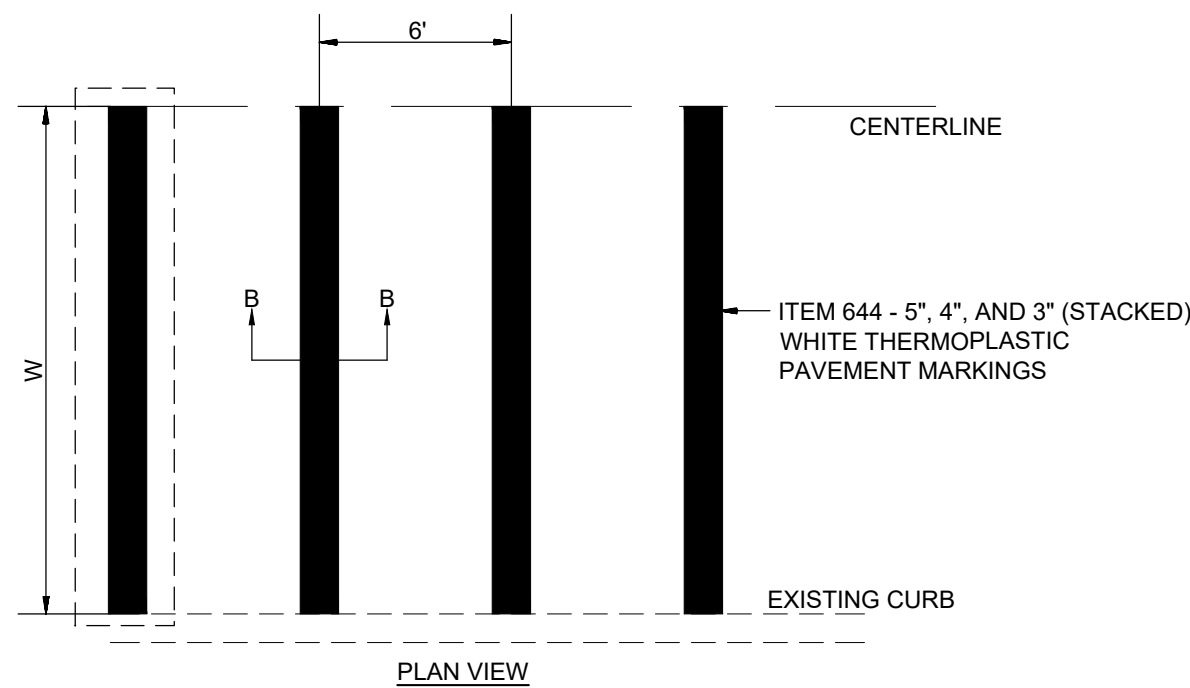
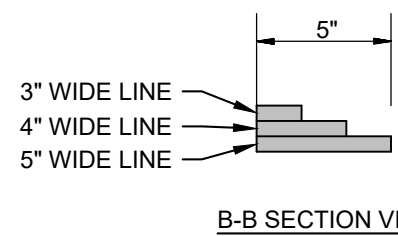
FULL DEPTH PAVEMENT REPAIR (ASPHALT)
N.T.S



CONCRETE DRIVEWAY ARPON REPLACEMENT (WITH SIDEWALK)
N.T.S

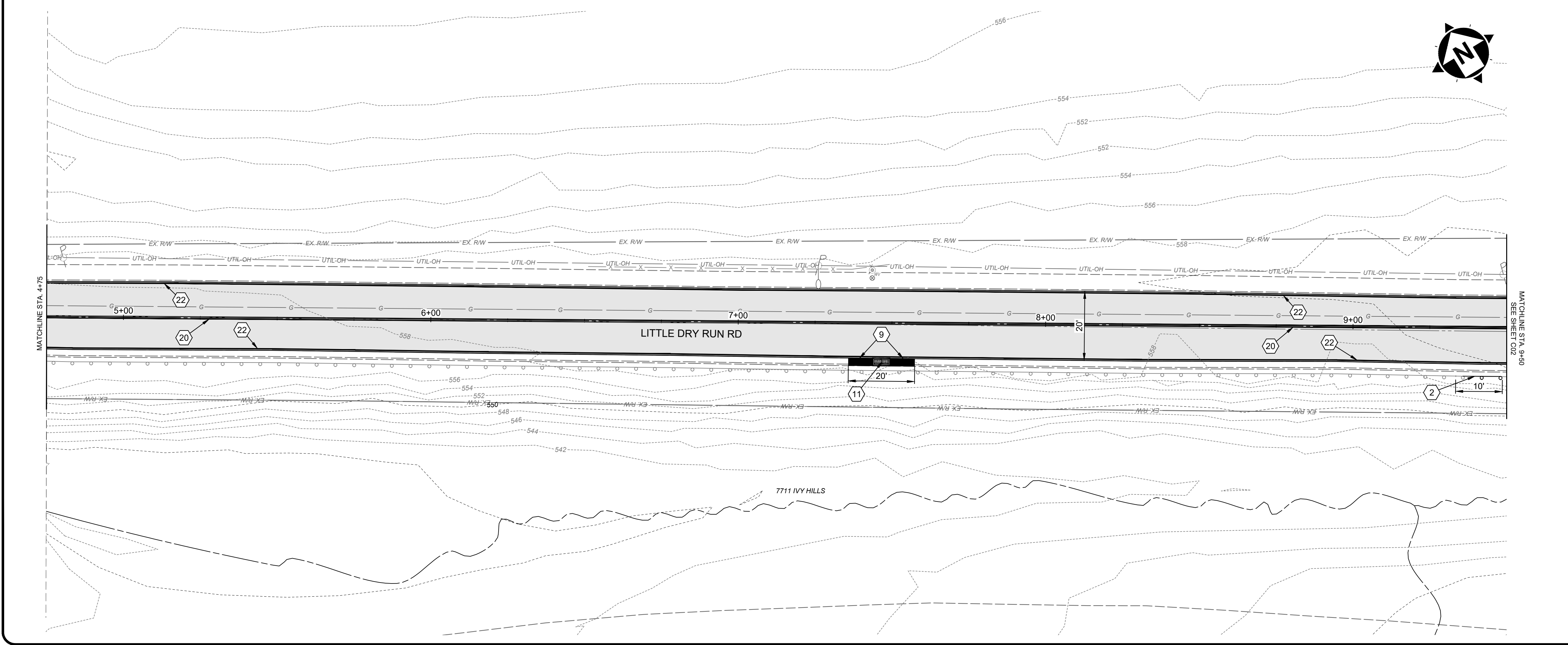
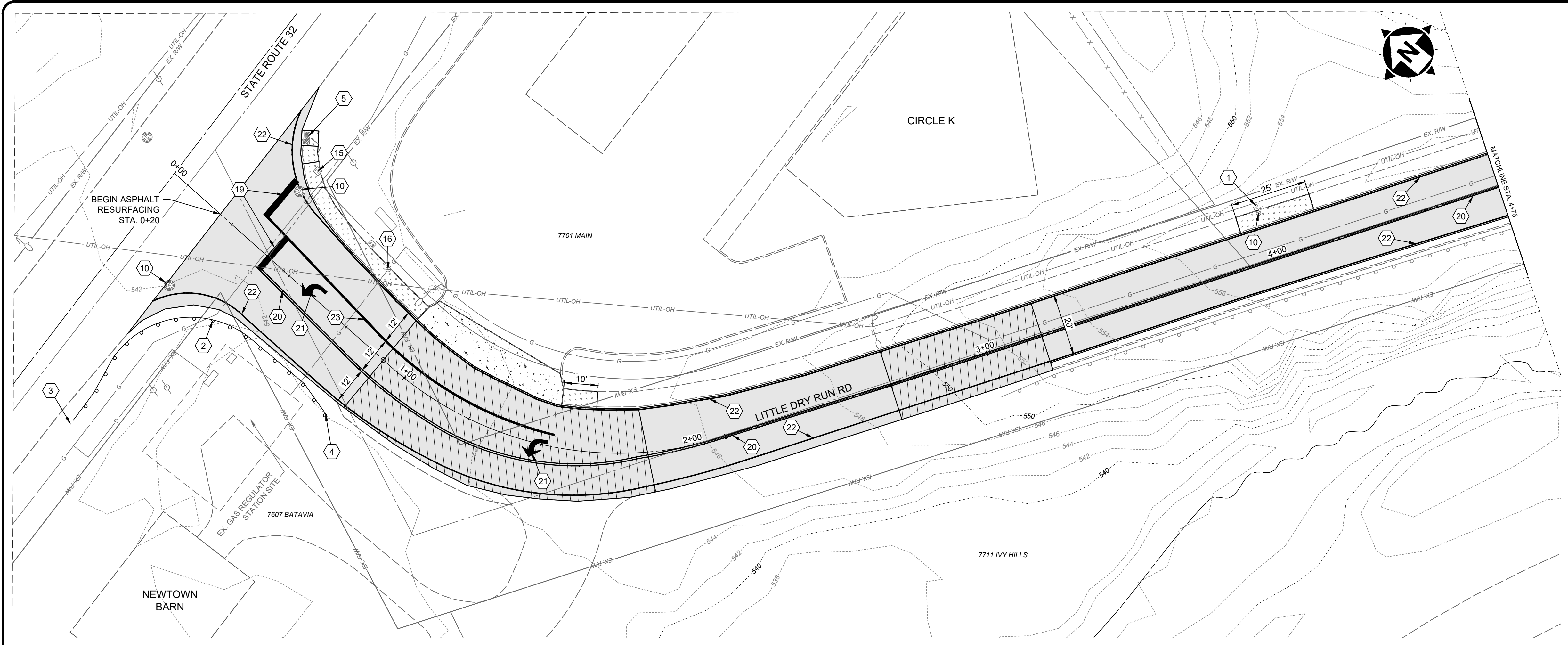


WHITE THERMOPLASTIC CROSSWALK DETAIL
N.T.S



WHITE PAINTED RUMBLE MARKINGS DETAIL
N.T.S

PROJECT NO.	32982
DISCIPLINE	CIVIL
SHEET NAME	DTL1
SHEET	OF
3	6



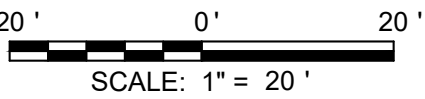
- CONSTRUCTION NOTES**
- 1 ITEM SPL - DO NOT DISTURB
 - 2 ITEM 606 - REMOVE AND REPLACE EXISTING MGS GUARDRAIL
 - 3 ITEM 606 - ANCHOR ASSEMBLY, MGS TYPE A
 - 4 ITEM 606 - ANCHOR ASSEMBLY, MGS TYPE T
 - 5 ITEM 608 - CURB RAMP, TYPE B1
 - 6 ITEM 608 - CURB RAMP, TYPE B3
 - 7 ITEM 608 - TRANSITION CURB OVER 3' TO MATCH EXISTING
 - 8 ITEM 609 - CURB AND GUTTER REPLACEMENT, ODOT TYPE 3
 - 9 ITEM 609 - CURB AND GUTTER REPLACEMENT, ODOT TYPE 2
 - 10 ITEM 638 - ADJUST WATER VALVE / MANHOLE TO FINISHED GRADE
 - 11 ITEM 611 - REMOVE AND REPLACE TOP FRAME AND CASTINGS ON CURB INLET, TOP 18" ONLY (CB-3)
 - 12 ITEM 611 - ADJUST STORM MANHOLE TO FINISHED GRADE
 - 13 NOT USED
 - 14 NOT USED
 - 15 ITEM 638 - ADJUST PULL BOX TO FINISHED GRADE
 - 16 ITEM SPL - ADJUST GAS VALVE OR BOX TO FINISHED GRADE
 - 17 ITEM SPL - ADJUST SANITARY MANHOLE TO FINISHED GRADE
 - 18 ITEM 644 - CROSSWALK MARKINGS, WHITE, AS PER DETAIL
 - 19 ITEM 644 - STOP BAR, WHITE
 - 20 ITEM 644 - CENTERLINE, DOUBLE YELLOW
 - 21 ITEM 644 - 96" LANE ARROW, WHITE
 - 22 ITEM 644 - 4" EDGE LINE, WHITE
 - 23 ITEM 644 - 8" CHANNELIZATION LINE, WHITE
 - 24 ITEM 644 - SPEED MEASUREMENT MARKING, WHITE
 - 25 ITEM 644 - PAINTED RUMBLE MARKINGS, WHITE, AS PER DETAIL

- HATCH LEGEND**
- ITEM 441 - ASPHALT PAVEMENT PLANING AND OVERLAY (2.5")
 - ITEM 441 - FULL DEPTH PAVEMENT REPAIR
 - ITEM 452-CONCRETE DRIVEWAY REPLACEMENT
 - ITEM 608 - INTEGRAL CURB AND WALK
 - ITEM 609 - CURB AND GUTTER REPLACEMENT

NOTE:
ALL UTILITIES SHOWN ON PLANS ARE APPROXIMATE AND MUST BE FIELD VERIFIED PRIOR TO START OF CONSTRUCTION.

FINAL LOCATIONS OF FULL DEPTH PAVEMENT REPAIR LOCATIONS TO BE MARKED IN FIELD BY ENGINEER.

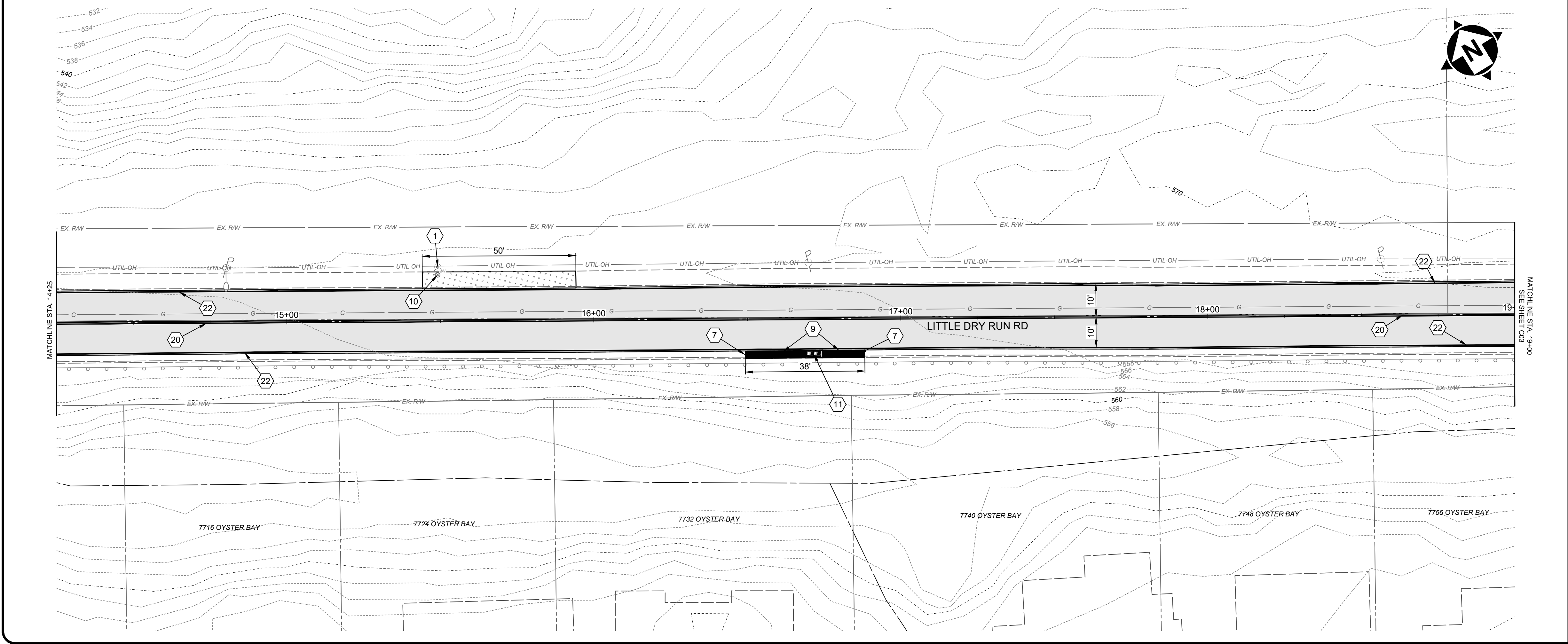
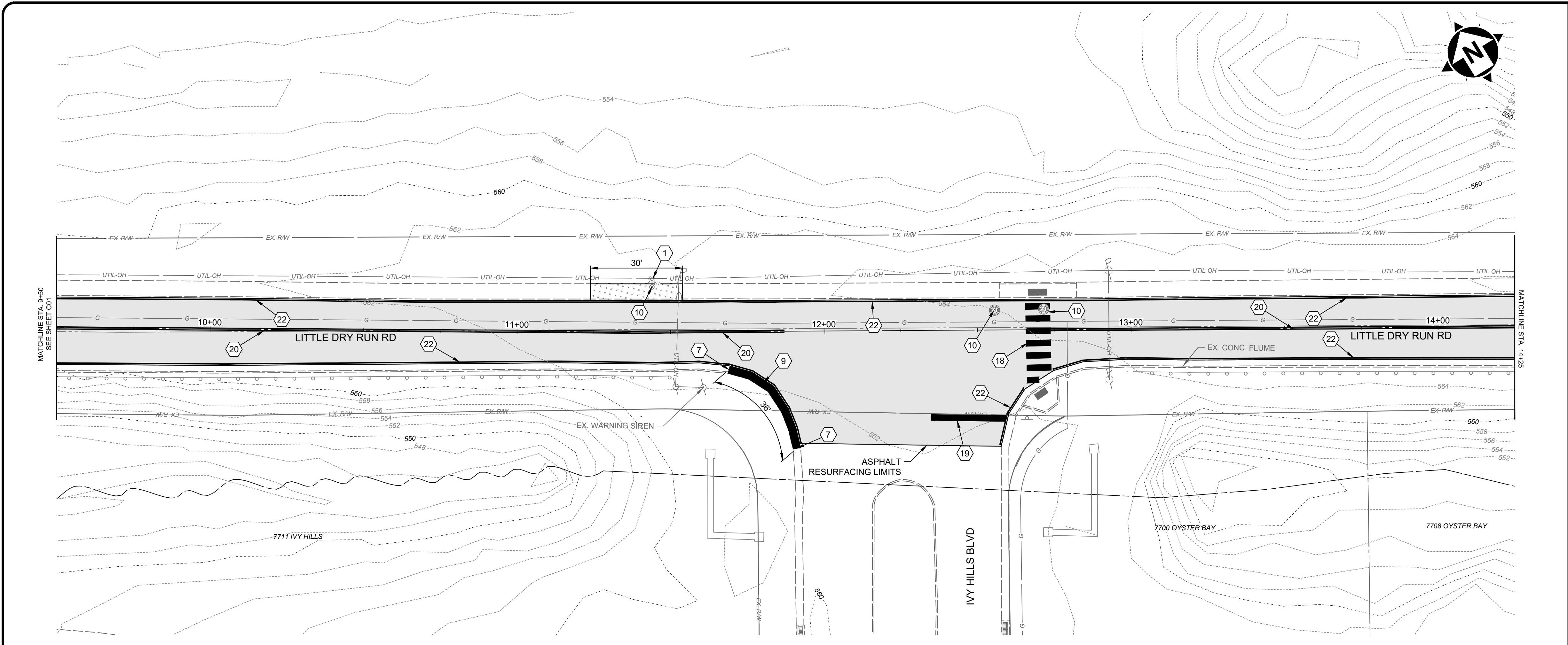
CONTRACTOR IS NOT RESPONSIBLE TO RELOCATE PRIVATE UTILITIES WITHIN THE RIGHT-OF-WAY.



LITTLE DRY RUN RD IMPROVEMENTS
VILLAGE OF NEWTOWN
- HAMILTON COUNTY, OH -

LITTLE DRY RUN RD STA. 0+00 - 9+50

PROJECT NO.	
32982	
DISCIPLINE	
CIVIL	
SHEET NAME	
C01	
SHEET	OF
4	6



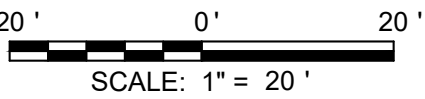
- CONSTRUCTION NOTES**
- 1 ITEM SPL - DO NOT DISTURB
 - 2 ITEM 606 - REMOVE AND REPLACE EXISTING MGS GUARDRAIL
 - 3 ITEM 606 - ANCHOR ASSEMBLY, MGS TYPE A
 - 4 ITEM 606 - ANCHOR ASSEMBLY, MGS TYPE T
 - 5 ITEM 608 - CURB RAMP, TYPE B1
 - 6 ITEM 608 - CURB RAMP, TYPE B3
 - 7 ITEM 608 - TRANSITION CURB OVER 3' TO MATCH EXISTING
 - 8 ITEM 609 - CURB AND GUTTER REPLACEMENT, ODOT TYPE 3
 - 9 ITEM 609 - CURB AND GUTTER REPLACEMENT, ODOT TYPE 2
 - 10 ITEM 638 - ADJUST WATER VALVE / MANHOLE TO FINISHED GRADE
 - 11 ITEM 611 - REMOVE AND REPLACE TOP FRAME AND CASTINGS ON CURB INLET, TOP 18" ONLY (CB-3)
 - 12 ITEM 611 - ADJUST STORM MANHOLE TO FINISHED GRADE
 - 13 NOT USED
 - 14 NOT USED
 - 15 ITEM 638 - ADJUST PULL BOX TO FINISHED GRADE
 - 16 ITEM SPL - ADJUST GAS VALVE OR BOX TO FINISHED GRADE
 - 17 ITEM SPL - ADJUST SANITARY MANHOLE TO FINISHED GRADE
 - 18 ITEM 644 - CROSSWALK MARKINGS, WHITE, AS PER DETAIL
 - 19 ITEM 644 - STOP BAR, WHITE
 - 20 ITEM 644 - CENTERLINE, DOUBLE YELLOW
 - 21 ITEM 644 - 96" LANE ARROW, WHITE
 - 22 ITEM 644 - 4" EDGE LINE, WHITE
 - 23 ITEM 644 - 8" CHANNELIZATION LINE, WHITE
 - 24 ITEM 644 - SPEED MEASUREMENT MARKING, WHITE
 - 25 ITEM 644 - PAINTED RUMBLE MARKINGS, WHITE, AS PER DETAIL

- HATCH LEGEND**
- ITEM 441 - ASPHALT PAVEMENT PLANING AND OVERLAY (2.5")
 - ITEM 441 - FULL DEPTH PAVEMENT REPAIR
 - ITEM 452-CONCRETE DRIVEWAY REPLACEMENT
 - ITEM 608 - INTEGRAL CURB AND WALK
 - ITEM 609 - CURB AND GUTTER REPLACEMENT

NOTE:
ALL UTILITIES SHOWN ON PLANS ARE APPROXIMATE AND MUST BE FIELD VERIFIED PRIOR TO START OF CONSTRUCTION.

FINAL LOCATIONS OF FULL DEPTH PAVEMENT REPAIR LOCATIONS TO BE MARKED IN FIELD BY ENGINEER.

CONTRACTOR IS NOT RESPONSIBLE TO RELOCATE PRIVATE UTILITIES WITHIN THE RIGHT-OF-WAY.



ISSUED FOR:	BID	DATE	REVISION	NO	NO	NO	NO	NO
ISSUE DATE:	9/8/2025							
SCALE:	AS SHOWN							
DESIGNED BY:	JBOW							
DRAWN BY:	EKRA							
CHECKED BY:	JBOW							

LITTLE DRY RUN RD IMPROVEMENTS

VILLAGE OF NEWTOWN

- HAMILTON COUNTY, OH -

PROJECT NO.

32982

DISCIPLINE

CIVIL

SHEET NAME

C02

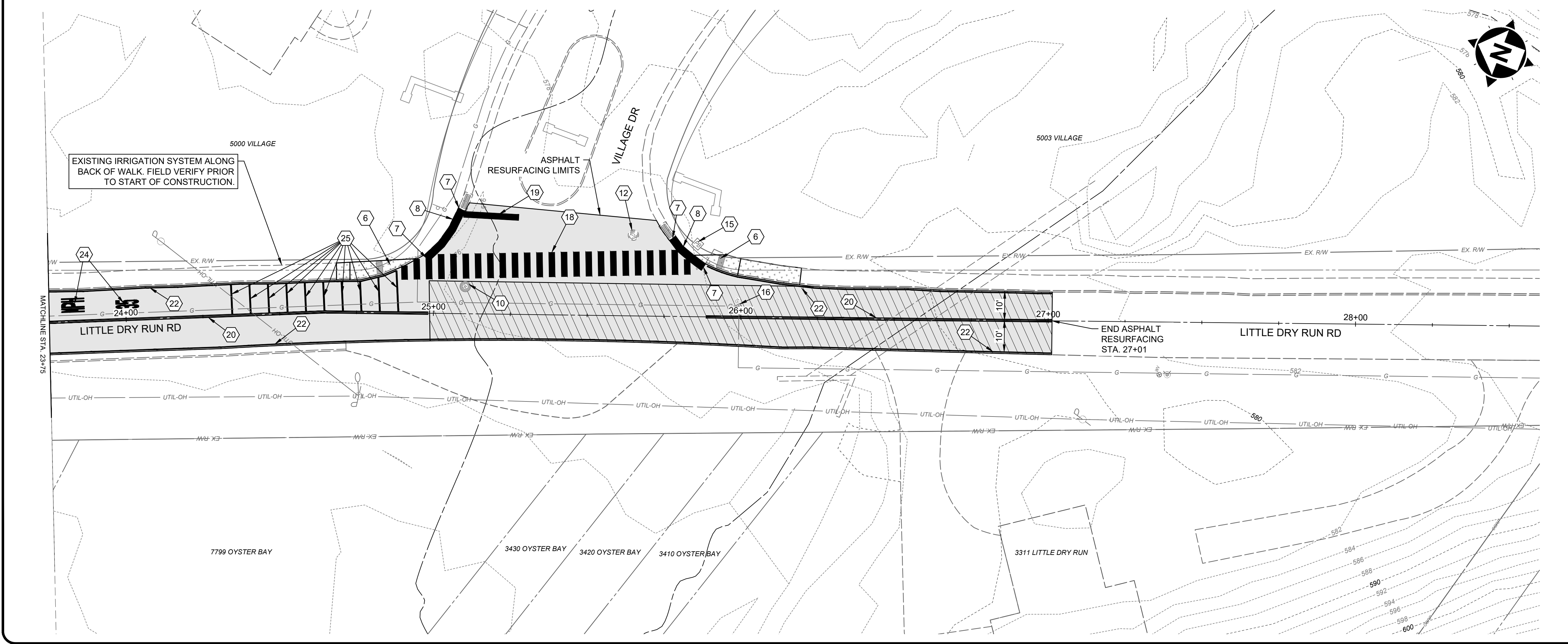
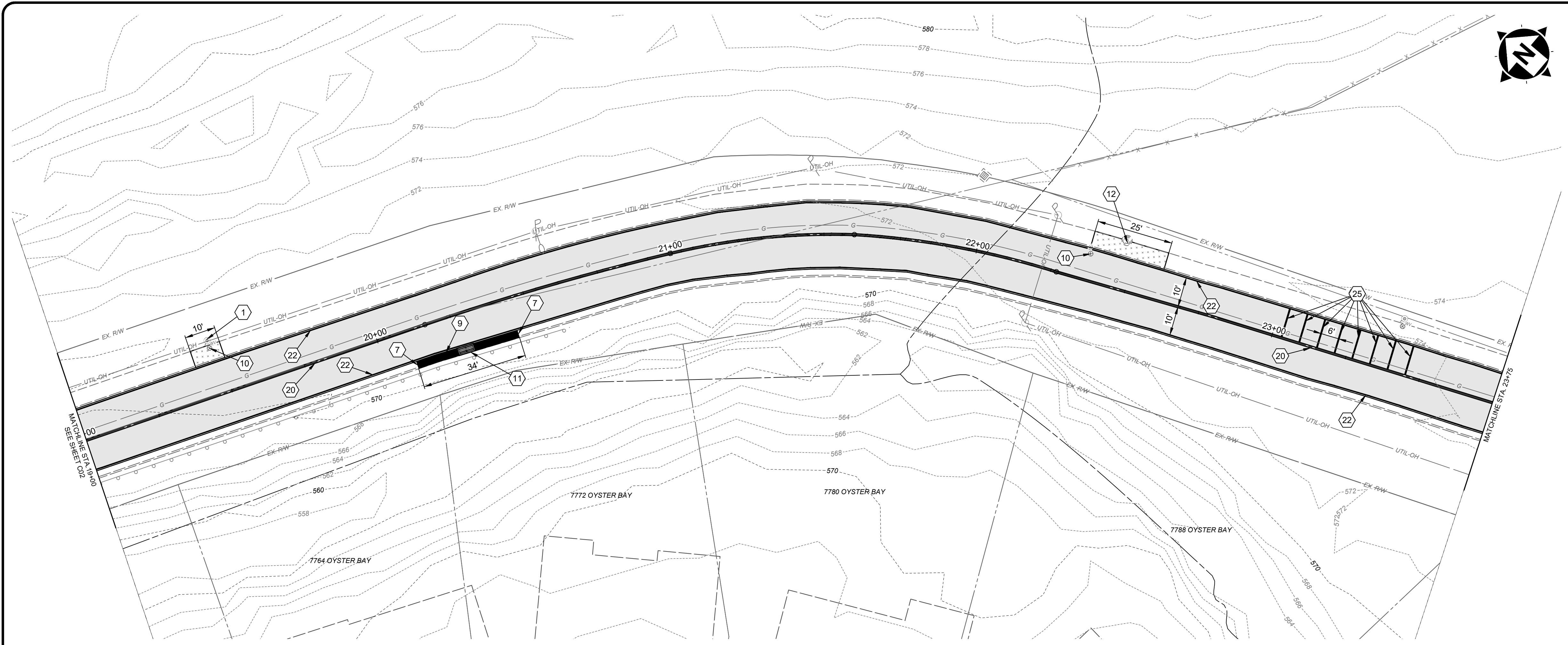
SHEET

5

OF

6

LITTLE DRY RUN RD STA. 9+50 - 19+00



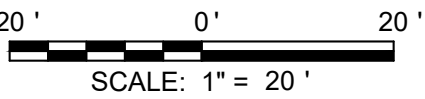
- | CONSTRUCTION NOTES | |
|--------------------|---|
| 1 | ITEM SPL - DO NOT DISTURB |
| 2 | ITEM 606 - REMOVE AND REPLACE EXISTING MGS GUARDRAIL |
| 3 | ITEM 606 - ANCHOR ASSEMBLY, MGS TYPE A |
| 4 | ITEM 606 - ANCHOR ASSEMBLY, MGS TYPE T |
| 5 | ITEM 608 - CURB RAMP, TYPE B1 |
| 6 | ITEM 608 - CURB RAMP, TYPE B3 |
| 7 | ITEM 608 - TRANSITION CURB OVER 3' TO MATCH EXISTING |
| 8 | ITEM 609 - CURB AND GUTTER REPLACEMENT, ODOT TYPE 3 |
| 9 | ITEM 609 - CURB AND GUTTER REPLACEMENT, ODOT TYPE 2 |
| 10 | ITEM 638 - ADJUST WATER VALVE / MANHOLE TO FINISHED GRADE |
| 11 | ITEM 611 - REMOVE AND REPLACE TOP FRAME AND CASTINGS ON CURB INLET, TOP 18" ONLY (CB-3) |
| 12 | ITEM 611 - ADJUST STORM MANHOLE TO FINISHED GRADE |
| 13 | NOT USED |
| 14 | NOT USED |
| 15 | ITEM 638 - ADJUST PULL BOX TO FINISHED GRADE |
| 16 | ITEM SPL - ADJUST GAS VALVE OR BOX TO FINISHED GRADE |
| 17 | ITEM SPL - ADJUST SANITARY MANHOLE TO FINISHED GRADE |
| 18 | ITEM 644 - CROSSWALK MARKINGS, WHITE, AS PER DETAIL |
| 19 | ITEM 644 - STOP BAR, WHITE |
| 20 | ITEM 644 - CENTERLINE, DOUBLE YELLOW |
| 21 | ITEM 644 - 96" LANE ARROW, WHITE |
| 22 | ITEM 644 - 4" EDGE LINE, WHITE |
| 23 | ITEM 644 - 8" CHANNELIZATION LINE, WHITE |
| 24 | ITEM 644 - SPEED MEASUREMENT MARKING, WHITE |
| 25 | ITEM 644 - PAINTED RUMBLE MARKINGS, WHITE, AS PER DETAIL |

- | HATCH LEGEND | |
|--------------|--|
| | ITEM 441 - ASPHALT PAVEMENT PLANING AND OVERLAY (2.5") |
| | ITEM 441 - FULL DEPTH PAVEMENT REPAIR |
| | ITEM 452 - CONCRETE DRIVEWAY REPLACEMENT |
| | ITEM 608 - INTEGRAL CURB AND WALK |
| | ITEM 609 - CURB AND GUTTER REPLACEMENT |

NOTE:
ALL UTILITIES SHOWN ON PLANS ARE APPROXIMATE AND MUST BE FIELD VERIFIED PRIOR TO START OF CONSTRUCTION.

FINAL LOCATIONS OF FULL DEPTH PAVEMENT REPAIR LOCATIONS TO BE MARKED IN FIELD BY ENGINEER.

CONTRACTOR IS NOT RESPONSIBLE TO RELOCATE PRIVATE UTILITIES WITHIN THE RIGHT-OF-WAY.



verdant

as

LITTLE DRY RUN RD IMPROVEMENTS

VILLAGE OF NEWTOWN

- HAMILTON COUNTY, OH -

LITTLE DRY RUN RD STA. 19+00 - END

PROJECT NO.	
32982	
DISCIPLINE	
CIVIL	
SHEET NAME	
C03	
SHEET	OF
6	6