

CITY OF ALEXANDRIA  
CAMPBELL COUNTY, KENTUCKY  
2025 STREET PROGRAM

WALNUT PARK DRIVE  
ARROWHEAD DRIVE  
RAINBOW LANE

WRIGHT COURT  
FRANCIS COURT  
KEES DRIVE

TIMBERLINE DRIVE  
LONGRIDGE DRIVE  
ARBOR DRIVE

CITY OF ALEXANDRIA OFFICIALS

**MAYOR**  
ANDY SCHABELL

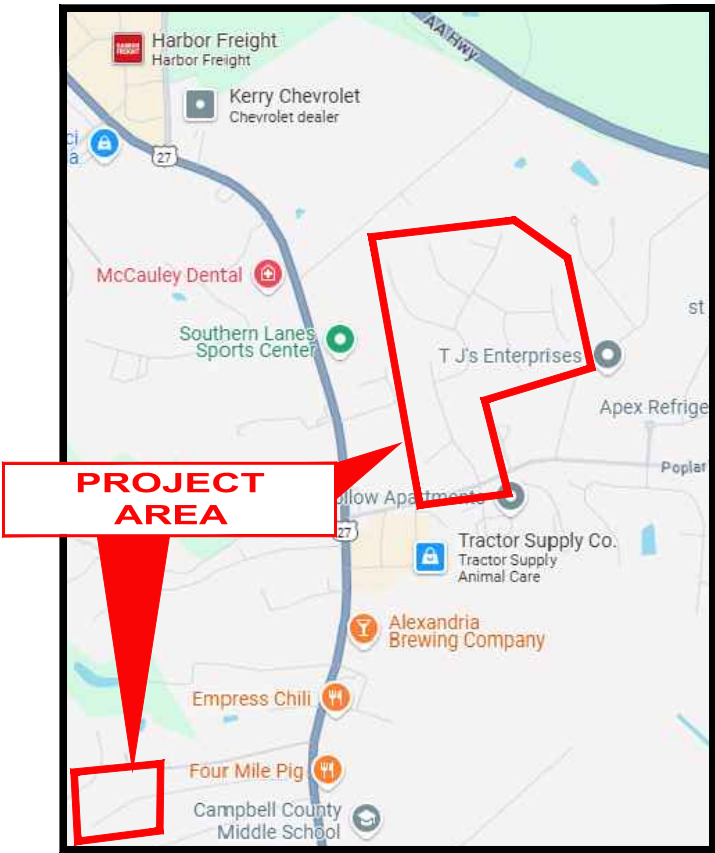
**CITY CLERK**  
STEPHANIE TARTER

**CITY COUNCIL MEMBERS**  
  
STACEY GRAUS  
ROBERT STRONG  
TOM BALDRIDGE  
PATRICK BLAIR  
MICHAEL MCGRATH

**CITY ATTORNEY**  
MICHAEL A. DUNCAN

**PUBLIC WORKS DIRECTOR**  
DOUG DEJACO

32765



VICINITY MAP

K.T.C SPECIFICATIONS

THE LATEST STANDARD SPECIFICATIONS OF THE KENTUCKY TRANSPORTATION CABINET, INCLUDING CHANGES AND SUPPLEMENTAL SPECIFICATIONS THERETO AND CITY OF LAKESIDE PARK ENGINEERING DEPARTMENT REQUIREMENTS SHALL GOVERN THIS IMPROVEMENT.

SOURCE OF BOUNDARY INFORMATION

THE BOUNDARY INFORMATION SHOWN ON THESE PLANS IS BASED UPON CAMPBELL COUNTY G.I.S. MAPPING AND DOES NOT REPRESENT AN ACTUAL FIELD BOUNDARY SURVEY BY CT CONSULTANTS, INC.



Sheet List Table

NO.	SHEET NAME
1	TITLE SHEET
2	GENERAL NOTES
3	DETAILS SHEET 1
4	DETAILS SHEET 3
5	DETAILS SHEET 2
6	WALNUT PARK DR STA. 1-16
7	WALNUT PARK DR STA. 16-20.5, ARROWHEAD DR
8	WALNUT PARK DR STA. 20.5-31
9	RAINBOW LN STA. 35-45
10	KEES DR & FRANCIS CT
11	TIMBERLINE DR & LONGRIDGE DR
12	ARBOR DRIVE
13	WRIGHT CT
14	WALNUT PARK DRAINAGE

verdantas

BID	05/21/2025	AS SHOWN	BHAU	BHAU	RSET
ISSUED FOR:	ISSUE DATE:	SCALE:	DESIGNED BY:	DRAWN BY:	CHECKED BY:

CITY OF ALEXANDRIA  
2025 STREET PROGRAM  
- CAMPBELL COUNTY, KENTUCKY -

TITLE SHEET

PROJECT NO.	32765
DISCIPLINE	CIVIL
SHEET NAME	TTL
SHEET	OF
1	14

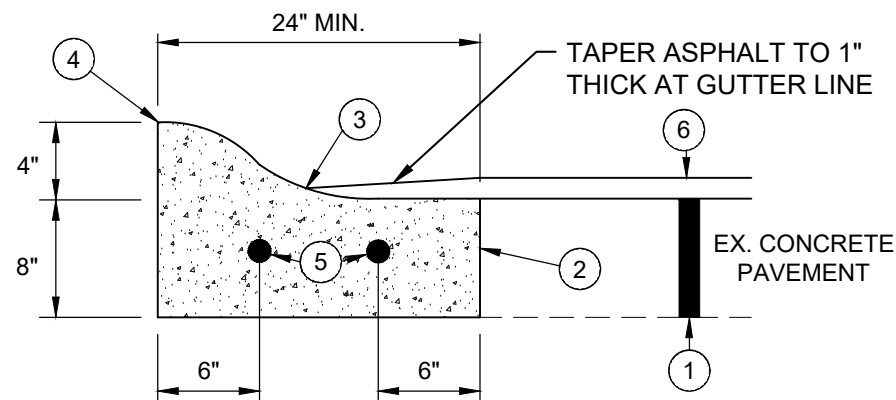
ROBERT SEITZINGER

P.E. #33805

Z:\PROJECT FILES\AA\ALEXANDRIA\32765 - ALEXANDRIA 2025 STREET PROGRAM\CADD\WGS\32765 - TTL SHEET DWG - TTL - 4/18/2025 2:53:39 PM - ROBERT SEITZINGER

Z:\PROJECT FILES\AAZ\ALEXANDRIA\2765 - ALEXANDRIA 2025 STREET PROGRAM\CAD\DWG\SHEET\2765 - GENERAL NOTES.DWG - NOTES - 5/13/2025 11:42:50 AM - ROBERT SEITZINGER

GENERAL NOTES		GENERAL NOTES (CONT.)		ELECTRIC NOTES		<div>verdantas</div>	
<div><div>1.</div><div>ALL CONSTRUCTION SHALL CONFORM TO THESE PLANS AND SPECIFICATIONS, THE LATEST EDITION OF <b>THE CITY OF ALEXANDRIA SUBDIVISION REGULATIONS AND THE KENTUCKY DEPARTMENT OF HIGHWAYS STANDARD SPECIFICATIONS FOR ROAD AND BRIDGE CONSTRUCTION</b>.</div></div> <div><div>2.</div><div>EXPANSION MATERIAL SHALL BE FLEXIBLE FOAM MATERIAL, SUCH AS CERAMAR BY W.R. MEADOWS OR APPROVED EQUAL, INSTALLED IN AREAS OF CONCRETE WALK, DRIVES OR CURB/GUTTER ONLY AT THE FOLLOWING:<div><div>A.</div><div>AT ALL FIXED OBJECTS (I.E. UTILITY COVERS, VALVES, MANHOLES, ETC.)</div></div><div><div>B.</div><div>AT ALL RIGID STRUCTURES (I.E. DRIVES, CURBS, STEPS, ETC.) PAYMENT FOR THIS ITEM AND ZIP STRIPS INCLUDED IN THE PERTINENT CONCRETE PAVEMENT UNIT PRICE.</div></div><div><div>C.</div><div>AT ALL STREET INTERSECTIONS AT THE POINT OF CURVATURE OF THE TURNING RADII ENTERING THE INTERSECTION.</div></div><div><div>D.</div><div>NO CONCRETE SHALL BE LEFT ABOVE THE EXPANSION MATERIAL OR ACROSS THE JOINT AT ANY POINT. ANY CONCRETE SPANNING THE ENDS OF THE JOINT NEXT TO THE FORMS SHALL BE CAREFULLY CUT AWAY AFTER THE FORMS ARE REMOVED. BEFORE THE PAVEMENT IS OPENED TO TRAFFIC, THE GROOVE ABOVE THE EXPANSION JOINT MATERIAL SHALL BE CLEANED AND SEALED WITH JOINT SEALING MATERIAL.</div></div></div></div> <div><div>3.</div><div><b>A WATERMAIN REPLACEMENT PROJECT ON ARROWHEAD DRIVE AND WALNUT PARK DIVE (RAINBOW LANE TO CUL-DE-SAC) WILL TAKE PLACE PRIOR TO THE PLACEMENT OF ASPHALT. FINAL DATES HAVE NOT BEEN SET. IT IS ANTICIPATED THAT THE ASPHALT PAVING WOULD NOT OCCUR UNTIL SPRING OF 2026. STORM SEWER IMPROVEMENTS ALONG WITH CONCRETE PAVEMENT AND CURB SPOT REPAIRS CAN BE COMPLETED ANYTIME BETWEEN THE NOTICE TO PROCEED AND THE COMPLETION DATE OF THE PROJECT. THE STREET PROGRAM SHALL BE SUBSTANTIALLY COMPLETE NO LATER THAN <b>MAY 31, 2026</b>.</b></div></div> <div><div>4.</div><div>ALL DISTURBED AREAS ARE TO BE RESTORED (SEEDED AND MULCHED) BY THE CONTRACTOR AND SHALL PROCEED WITH JOB PROGRESSION. THE CONTRACTOR SHALL ALSO BE RESPONSIBLE FOR REMOVING ANY EXCESS MATERIALS AT THE SITE AND MAINTAINING ALL SEEDED AND MULCHED AREAS UNTIL PROJECT COMPLETION AND FINAL INSPECTION PER <b>KDOT SPEC. 212</b>. A RESIDENTIAL YARD SHALL BE RESTORED WITHIN TWENTY-ONE (21) DAYS AFTER CONSTRUCTION.</div></div> <div><div>5.</div><div>ALL APPLICABLE RECOMMENDATIONS IN <b>KENTUCKY'S BEST MANAGEMENT PRACTICES MANUAL</b> SHALL BE FOLLOWED BY THE CONTRACTOR, INCLUDING SEEDING OF DISTURBED GROUND.</div></div> <div><div>6.</div><div>RIGHT-OF-WAY AND PROPERTY LINES SHOWN ARE PLOTTED FROM <b>CAMPBELL COUNTY G.I.S. MAPPING</b> AND ARE APPROXIMATE AND NOT THE RESULT OF A FIELD BOUNDARY SURVEY.</div></div> <div><div>7.</div><div>THE CONTRACTOR SHALL LIMIT THEIR WORK AREA TO THE EASEMENTS AND RIGHTS-OF-WAY SHOWN ON THESE PLANS UNLESS WRITTEN PERMISSION IS GIVEN BY THE PROPERTY OWNER AND APPROVED BY THE <b>CITY OF ALEXANDRIA</b>.</div></div> <div><div>8.</div><div>ALL OSHA, STATE AND LOCAL SAFETY REGULATIONS SHALL BE FOLLOWED DURING CONSTRUCTION.</div></div> <div><div>9.</div><div>RELOCATION OR REINSTALLATION OF EXISTING MAIL BOXES, FENCES, PRIVATE LANDSCAPE LIGHTS, PRIVATE SIGNS, STREET SIGNS, RESTORATION OF LANDSCAPING AND TREATMENT OF EXISTING WALLS WHERE A PORTION HAS BEEN REMOVED SHALL BE INCIDENTAL TO THE OVERALL PROJECT.</div></div> <div><div>11.</div><div>NO CONSTRUCTION SHALL COMMENCE UNTIL ALL <b>CAMPBELL COUNTY AND THE CITY OF ALEXANDRIA</b> PERMITS HAVE BEEN ISSUED AS REQUIRED.</div></div> <div><div>13.</div><div>LIMITS OF DRIVEWAY APRON, CURB, &amp; SIDEWALK REPLACEMENT TO BE MARKED IN THE FIELD BY THE ENGINEER. THE QUANTITIES LISTED IN THE SPECIFICATION/BID BOOK ARE FOR ESTABLISHING UNIT PRICES. THESE QUANTITIES MAY INCREASE OR DECREASE DURING THE PROJECT AS REQUIRED BY THE ENGINEER.</div></div> <div><div>14.</div><div>LIMITS OF FULL DEPTH PAVEMENT REPLACEMENT WILL BE MARKED IN THE FIELD BY THE ENGINEER AFTER THE EXISTING PAVEMENT SURFACE HAS BEEN MILLED.</div></div>		<div>THE QUANTITIES LISTED IN THE SPECIFICATION/BID BOOK ARE FOR ESTABLISHING UNIT PRICES. THESE QUANTITIES MAY INCREASE OR DECREASE DURING THE PROJECT AS REQUIRED BY THE ENGINEER.</div> <div><div>15.</div><div>TRASH SERVICE IS TYPICALLY ON WEDNESDAYS OF EACH WEEK.</div></div> <div><div>16.</div><div>CONTRACTOR SHALL CLEAN ALL CURB INLETS UPON COMPLETION OF ASPHALT OVERLAY.</div></div> <div><div>17.</div><div>CONTRACTOR SHALL MAINTAIN POSITIVE DRAINAGE ON ALL FINISHED SURFACES. CONTRACTOR SHALL CONSULT WITH ENGINEER FOR AREAS SUBJECT TO PONDING.</div></div> <div><div>18.</div><div>STATION AND LOCATIONS INDICATED ON THESE PLANS ARE APPROXIMATE. ALL LOCATIONS AND ITEMS CALLED OUT BY NOTATION ARE SUBJECT TO DISCREPANCY.</div></div>		<div>1. ALL WORK RELATING TO ELECTRIC LINES SHALL BE COMPLETED IN ACCORDANCE WITH THE RULES AND REGULATIONS OF THE <b>DUKE ENERGY</b></div>			
		<div>UTILITY NOTES</div> <div><div>19.</div><div>THE CONTRACTOR IS TO PLACE THE PROPOSED PAVEMENT TO FOLLOW THE ALIGNMENT PROFILE OF THE EXISTING PAVEMENT. THIS PLAN SHOWS THE APPROXIMATE LOCATION OF UNDERGROUND UTILITIES (GAS, WATER, STORM SEWER, SANITARY SEWER, TELEPHONE, ELECTRIC, ETC.). THE PREPARER DOES NOT GUARANTEE THEIR ACCURACY OR CORRECTNESS. THE INFORMATION PROVIDED SHALL BE FIELD VERIFIED PRIOR TO CONSTRUCTION. THE CONTRACTOR SHALL BE RESPONSIBLE FOR MAINTAINING THE UTILITY AS WELL AS THE SERVICE LATERALS AT ALL TIMES DURING CONSTRUCTION. THE CONTRACTOR SHALL PRACTICE CARE DURING THE GRADING AND TRENCH EXCAVATION AND SHALL BE RESPONSIBLE FOR REPLACING ANY SERVICES THAT ARE DAMAGED DURING CONSTRUCTION AT THEIR EXPENSE.</div></div> <div><div>2.</div><div>PRIOR TO ANY EXCAVATION OVER AN EXISTING UTILITY LINE OR SERVICE, CONTRACTOR SHALL HAND EXCAVATE TO EXPOSE THE UTILITY AND DETERMINE LOCATION AND DEPTH. NOTIFY ENGINEER IMMEDIATELY OF ANY CONFLICTS.</div></div> <div><div>3.</div><div>TOPS OF EXISTING AND PROPOSED CASTING ELEVATIONS ARE SUBJECT TO FINAL ADJUSTMENTS AS APPROVED BY THE ENGINEER AND REQUIREMENTS OF UTILITY OWNER. THIS WORK WILL BE INCIDENTAL TO THE CONTRACT.</div></div> <div><div>4.</div><div>FORTY-EIGHT (48) HOURS BEFORE EXCAVATION IS TO COMMENCE, THE CONTRACTOR SHALL NOTIFY THE FOLLOWING AGENCIES: THE KENTUCKY UTILITY PROTECTION SERVICE AND ALL OTHER UTILITIES THAT MAY HAVE UNDERGROUND UTILITIES INVOLVING THIS PROJECT AND ARE NON-MEMBERS OF KENTUCKY UNDERGROUND PROTECTION.</div></div>		<div>WATER NOTES</div> <div><div>1.</div><div>ALL WORK RELATING TO WATER MAINS OR WATER SERVICE LINES SHALL BE COMPLETED IN ACCORDANCE WITH THE RULES AND REGULATIONS OF THE <b>NORTHERN KENTUCKY WATER DISTRICT (NKWD)</b>.</div></div> <div><div>2.</div><div>CONTRACTOR MAY NOT USE WATER FROM FIRE HYDRANTS WITHOUT PRIOR PERMISSION FROM <b>NKWD</b></div></div>			
<div>STORM &amp; SANITARY NOTES</div> <div><div>1.</div><div>ALL STORM AND SANITARY ITEMS SHALL BE IN ACCORDANCE WITH THE LATEST SPECIFICATIONS AND DETAILS FROM SD1. CONCRETE AND METAL PIPE MATERIALS SHALL NOT BE USED UNLESS OTHERWISE SPECIFIED ON THESE PLANS.</div></div> <div><div>2.</div><div>CONTRACTOR SHALL BE REQUIRED TO MAINTAIN STORM AND SANITARY SEWER FLOW THROUGHOUT THE PROJECT, FOR THE DURATION OF CONSTRUCTION. ALL COST FOR THE ABOVE SHALL BE INCIDENTAL TO THE CONTRACT.</div></div> <div><div>3.</div><div>IF REQUIRED, CONTRACTOR SHALL BE RESPONSIBLE FOR CONTACTING AND SCHEDULING STORM AND SANITARY SEWER INSPECTIONS AS SET OUT IN THE PRECONSTRUCTION MEETING.</div></div> <div><div>4.</div><div>CONNECTIONS INTO EXISTING OR PROPOSED STORM OR SANITARY SEWER STRUCTURES OR PIPES SHALL BE COMPLETED BY A CERTIFIED TAPPER BY <b>SD1</b>.</div></div>		<div>MAINTENANCE OF TRAFFIC NOTES</div> <div><div>1.</div><div>ALL MAINTENANCE OF TRAFFIC PROCEDURES SHALL MEET THE REQUIREMENT OF THE MANUAL OF UNIFORM TRAFFIC CONTROL DEVICES AND SECTION 112 OF KTC STANDARD SPECIFICATIONS. THE CONTRACTOR SHALL MAINTAIN ACCESS TO LOCAL TRAFFIC (ACCESS TO RESIDENCES WITHIN CONSTRUCTION LIMITS) AT ALL TIMES. THE CONTRACTOR SHALL PROVIDE SUFFICIENT SIGN, WARNING LIGHTS, BARRICADES, OR OTHER NECESSARY DEVICES MAKE THE SITE SAFE TO THE TRAVELING PUBLIC.</div></div> <div><div>2.</div><div>IT SHALL BE THE CONTRACTOR'S RESPONSIBILITY TO SUBMIT TO THE ENGINEER AND THE OWNER A TRAFFIC CONTROL PLAN FOR THIS PROJECT.</div></div> <div><div>3.</div><div>PRIOR TO ANY CONSTRUCTION, THE CONTRACTOR SHALL NOTIFY THE CITY OF ALEXANDRIA AND THE ALEXANDRIA POLICE DEPARTMENT. AT ALL TIMES, EMERGENCY VEHICLES SHALL BE GIVEN ACCESS.</div></div> <div><div>4.</div><div>RESIDENTS OF THE PROJECT AREA SHALL BE ALLOWED ACCESS TO THEIR PROPERTY AT ALL TIMES.</div></div> <div><div>5.</div><div>EACH DRIVEWAY SHALL BE ACCESSIBLE WHENEVER POSSIBLE. WHEN PORTLAND CEMENT CONCRETE CONSTRUCTION AFFECTS A DRIVEWAY, THE CONTRACTOR SHALL NOTIFY THE AFFECTED OWNERS 24 HOURS IN ADVANCE AND ADVISE THEM TO FIND ALTERNATIVE PARKING FOR A PERIOD OF AT LEAST 10 CALENDAR DAYS AFTER THE POUR. ALTERNATIVE PARKING SHALL INCLUDE "ON STREET" PARKING WITH ACCESS TO THE PROPERTY. TEMPORARY SIDEWALKS, ETC. WILL BE NECESSARY TO PREVENT PERSONS FROM WALKING IN MUD IN ORDER TO ENTER THEIR PROPERTY. TEMPORARY BRIDGES, RAILINGS ETC. WILL BECOME NECESSARY IN ORDER TO CROSS FORMED CURB LINES, EXCAVATED AREAS BEHIND CURB LINES AND WALKWAYS, ETC.</div></div>					
<div>GAS NOTES</div> <div><div>1.</div><div>ALL WORK RELATING TO GAS MAINS OR GAS SERVICE LINES SHALL BE COMPLETED IN ACCORDANCE WITH THE RULES AND REGULATIONS OF THE <b>DUKE ENERGY</b>.</div></div>		<div>PAVEMENT REPAIR OPERATIONS</div> <div><div>1.</div><div>PAVEMENT REPAIR AS SHOWN ON PLANS ARE BASED ON FIELD OBSERVATIONS. FINAL REPAIRS SHALL BE DETERMINED BY FIELD REVIEW AFTER PAVEMENT HAVE BEEN PLANED CURB-TO-CURB (EDGE-TO-EDGE) WITHIN THE STREET SEGMENT LIMITS.</div></div> <div><div>2.</div><div>APPROVED METHODS FOR THE APPROVAL OF THE REMAINING (AFTER PLANING) ASPHALT CONCRETE OVERLAY AND, WHERE REQUIRED, CONCRETE SHALL SATISFACTORILY ESTABLISH A NEAT VERTICAL FACE ALONG THE ENTIRE PERIMETER OF THE RECTANGLE-SHAPED REMOVAL AREAS IN ORDER TO SUBSEQUENTLY PERMIT THE PROPER PLACEMENT AND COMPACTION OF THE FULL DEPTH PAVEMENT REPLACEMENT MATERIALS.</div></div> <div><div>3.</div><div>BEFORE PLACING THE PAVEMENT REPLACEMENT MATERIALS, CLEAN ALL VERTICAL FACES OF THE EXISTING PAVEMENT AND COAT THEM WITH ASPHALT MATERIAL ACCORDING TO 403. ALSO, APPLY ITEM 406 - TACK COAT TO THE SURFACE OF THE REPAIRED/EXISTING OR EXISTING ASPHALT BASE COURSE.</div></div> <div><div>4.</div><div>MATERIALS FOR THE PAVEMENT REPLACEMENT SHALL BE AS DETAILED ON THE FULL DEPTH PAVEMENT REPAIR DETAILS. PLACE AND COMPACT THE PAVEMENT REPLACEMENT IN ACCORDANCE WITH THE APPLICABLE SPECIFICATIONS.</div></div> <div><div>5.</div><div>THE FULL DEPTH PAVEMENT REPLACEMENT SHALL BE PERFORMED CONCURRENTLY WITH THE CURB AND WALK REPLACEMENT REPAIRS. ONLY AFTER THE REPAIRSARE PERFORMED FOR PHASED SEGMENT OF WORK MAY THE CONTRACTOR THEN INSTALL THE ASPHALT SURFACE INTERMEDIATE COURSE.</div></div>					
				<div>ISSUED FOR:</div> <div>BID</div> <div>ISSUE DATE:</div> <div>05/21/2025</div> <div>SCALE:</div> <div>AS SHOWN</div> <div>DESIGNED BY:</div> <div>BHAU</div> <div>DRAWN BY:</div> <div>BHAU</div> <div>CHECKED BY:</div> <div>RSEI</div>			
				<div>CITY OF ALEXANDRIA</div> <div>2025 STREET PROGRAM</div> <div>- CAMPBELL COUNTY, KENTUCKY -</div>			
				<div>GENERAL NOTES</div>			
				<div>PROJECT NO.</div> <div>32765</div> <div>DISCIPLINE</div> <div>CIVIL</div> <div>SHEET NAME</div> <div>NOTES</div> <div>SHEET</div> <div>2</div> <div>OF</div> <div>14</div>			



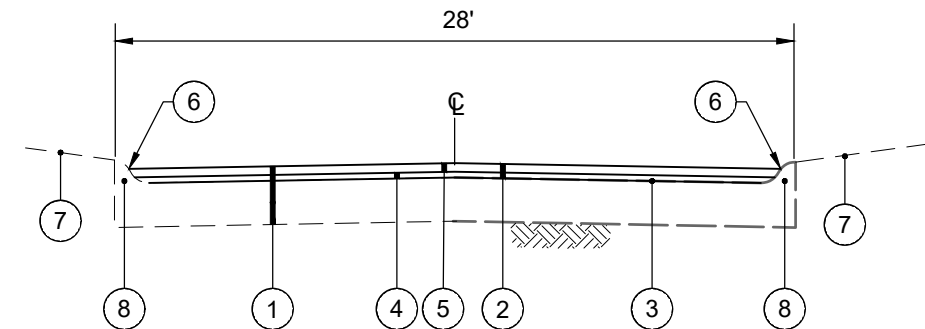
- ① EXISTING CONCRETE PAVEMENT (SEE TYPICAL SECTIONS)
- ② SAWCUT AND REMOVE EXISTING CURB (INCIDENTAL)
- ③ APPLY ASPHALT SEALER WHERE ASPHALT MEETS CURB (INCIDENTAL TO ITEM 402)
- ④ TOP/EDGE OF REPLACEMENT CURB TO MATCH LINE & GRADE OF ADJACENT EXISTING CURB
- ⑤ 5/8" DIA. DOWELS 18" LONG - DRILL 9" MIN. INTO EXIST. CURB
- ⑥ ASPHALT RESURFACING (SEE TYPICAL SECTIONS)

\* NOTE: THIS IS A CONTINGENCY ITEM TO BE USED ONLY AT THE DIRECTION OF THE ENGINEER LIMITS TO BE MARKED IN THE FIELD BY THE ENGINEER.

NOTE: CONTRACTOR SHALL FILL BEHIND CURB TO THE TOP OF THE CURB w/ TOPSOIL AND RESTORE YARD w/ SEED/MULCH. THE COST FOR TOPSOIL, SEED/MULCH SHALL BE INCIDENTAL TO THE UNIT PRICE BID FOR ROLL CURB REPLACEMENT.

### **ROLLED CURB REPLACEMENT (ON CONCRETE STREET WITH ASPHALT OVERLAY)**

N.T.S.



- ① EXISTING CONCRETE PAVEMENT w/ ASPHALT OVERLAY TO EXISTING CONCRETE PAVEMENT
- ② ITEM 408 - ASPHALT MILLING (2.0" TYP.)
- ③ ITEM 406 - TACK COAT @ 0.1 GAL/SY (INCIDENTAL TO ITEM 403)
- ④ ITEM 402/403 - VARIABLE THICKNESS ASPHALT LEVELING (3/4" @ CURB & 1-1/4" @ CENTER LINE)
- ⑤ ITEM 402/403 - 1" ASPHALT PAVEMENT SURFACE WITH ARAMID FIBER REINFORCEMENT (FORTA-FI OR ACE FIBER). TAPER ASPHALT OVERLAY TO 1" THICK AT GUTTER LINE
- ⑥ APPLY HOT ASPHALT SEALER WHERE ASPHALT MEETS CONCRETE CURB (INCIDENTAL TO ITEM 403)
- ⑦ DO NOT DISTURB YARD AREA
- ⑧ ITEM SPL \* - ROLLED CURB REPLACEMENT PER DETAIL

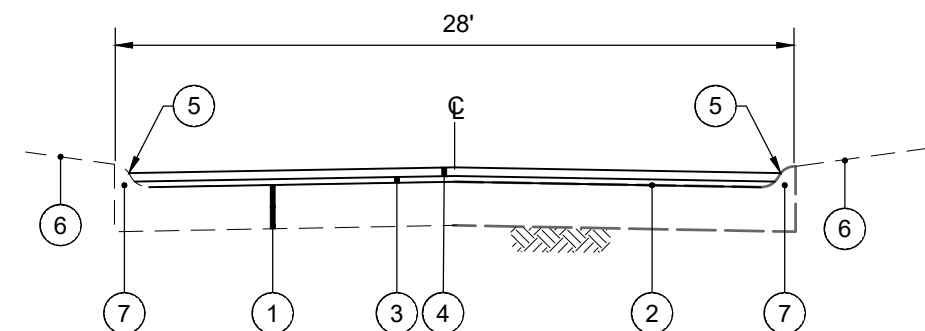
\*CONTINGENCY ITEM TO BE USED ONLY AT THE ENGINEER'S DIRECTION

### **TYPICAL PAVEMENT RESURFACING SECTION CONCRETE PAV'T w/ OVERLAY ROLLED CURB**

N.T.S.

- ① EXISTING CONCRETE PAVEMENT
- ② ITEM 406 - TACK COAT @ 0.1 GAL/SY (INCIDENTAL TO ITEM 403)
- ③ ITEM 402/403 - VARIABLE THICKNESS ASPHALT LEVELING (3/4" @ CURB & 1-1/4" @ CENTER LINE)
- ④ ITEM 402/403 - 1" ASPHALT PAVEMENT SURFACE WITH ARAMID FIBER REINFORCEMENT (FORTA-FI OR ACE FIBER). TAPER ASPHALT OVERLAY TO 1" THICK AT GUTTER LINE
- ⑤ APPLY HOT ASPHALT SEALER WHERE ASPHALT MEETS CONCRETE CURB (INCIDENTAL TO ITEM 403)
- ⑥ DO NOT DISTURB YARD AREA
- ⑦ ITEM SPL \* - ROLLED CURB REPLACEMENT PER DETAIL

\*CONTINGENCY ITEM TO BE USED ONLY AT THE ENGINEER'S DIRECTION



### **ASPHALT OVERLAY OF CONCRETE PAVEMENT**

N.T.S.

**verdantas**

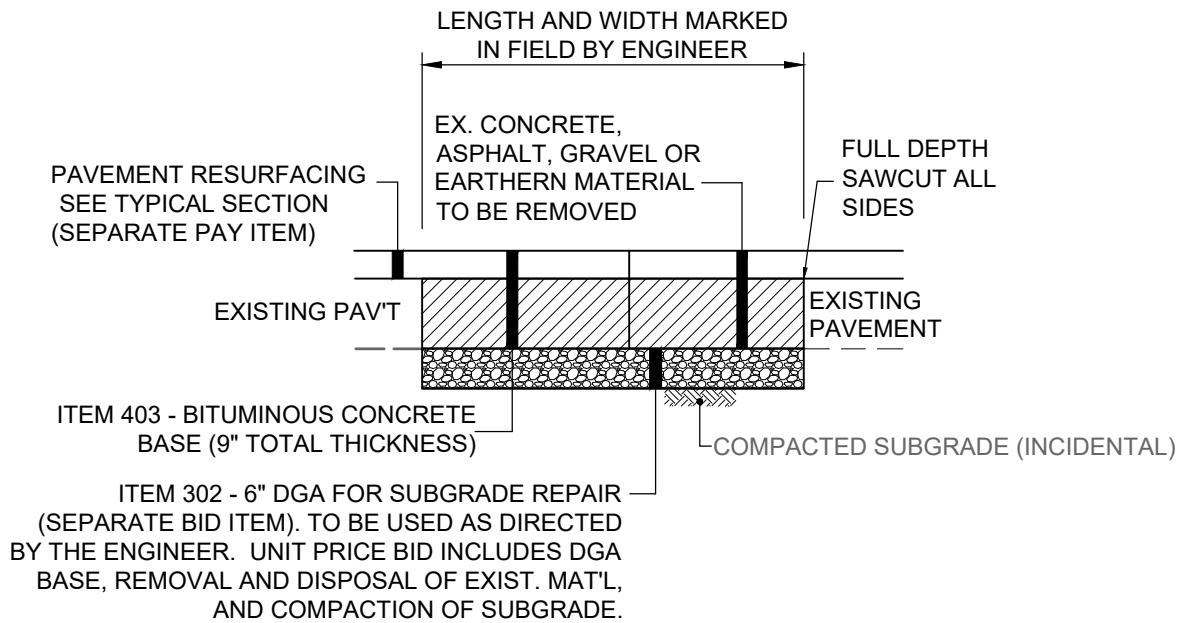
ISSUED FOR:	BID
ISSUE DATE:	05/21/2025
SCALE:	AS SHOWN
DESIGNED BY:	BHAU
DRAWN BY:	BHAU
CHECKED BY:	RSET

**CITY OF ALEXANDRIA  
2025 STREET PROGRAM  
- CAMPBELL COUNTY, KENTUCKY -**

**DETAILS SHEET 1**

PROJECT NO.	32765
DISCIPLINE	CIVIL
SHEET NAME	DET1
SHEET	3
OF	14

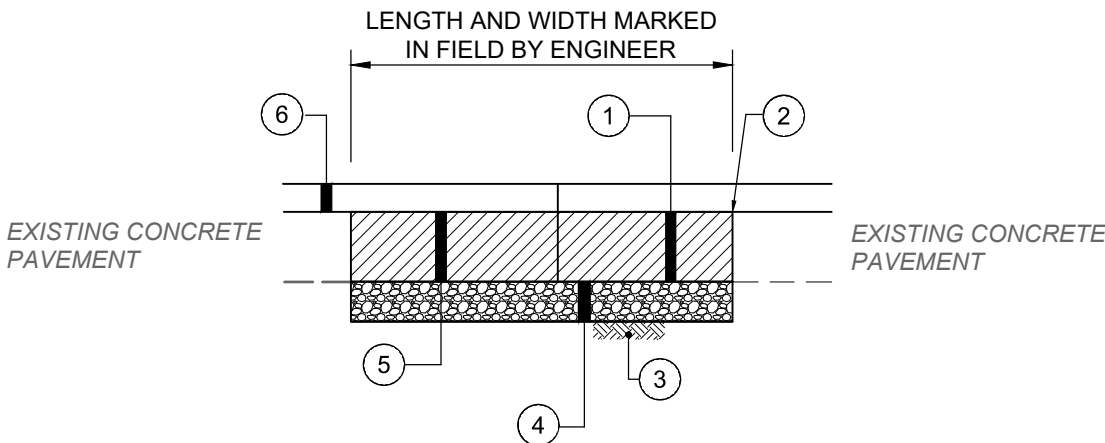
Z:\PROJECT FILES\AA\ALEXANDRIA\2025 STREET PROGRAM\CADD\WGSHEETS\2765 - DETAILS SHEET DWG - DET.03 - 5/12/2025 3:59:09 PM - ROBERT SEITZINGER



**FULL DEPTH PAVEMENT REPAIR (ASPHALT)**

N.T.S.

\* NOTE: THIS IS A CONTINGENCY ITEM TO BE USED ONLY AT THE DIRECTION OF THE ENGINEER. LIMITS TO BE MARKED IN THE FIELD BY THE ENGINEER.



- ① EX. CONCRETE, ASPHALT, GRAVEL OR EARTHEN MATERIAL TO BE REMOVED
- ② FULL DEPTH SAWCUT ALL SIDES
- ③ ITEM 207 - COMPACTED SUBGRADE (INCIDENTAL)
- ④ ITEM 302 - 6" DGA FOR SUBGRADE REPAIR (SEPARATE BID ITEM). TO BE USED AS DIRECTED BY THE ENGINEER. UNIT PRICE BID INCLUDES DGA BASE, REMOVAL AND DISPOSAL OF EXISTING MATERIAL AND COMPACTION OF SUBGRADE
- ⑤ ITEM 402/403 - 9" BITUMINOUS CONCRETE BASE (2 - 4 ½" LIFTS)
- ⑥ PAVEMENT RESURFACING PER TYPICAL SECTION (SEPARATE PAY ITEM)

\* NOTE: THIS IS A CONTINGENCY ITEM TO BE USED ONLY AT THE DIRECTION OF THE ENGINEER. LIMITS TO BE MARKED IN THE FIELD BY THE ENGINEER

**FULL DEPTH PAVEMENT REPAIR  
(CONCRETE w/APSHALT OVERLAY)**

N.T.S.

verdantas

ISSUED FOR:	BID
ISSUE DATE:	05/21/2025
SCALE:	AS SHOWN
DESIGNED BY:	BHAU
DRAWN BY:	BHAU
CHECKED BY:	RSET

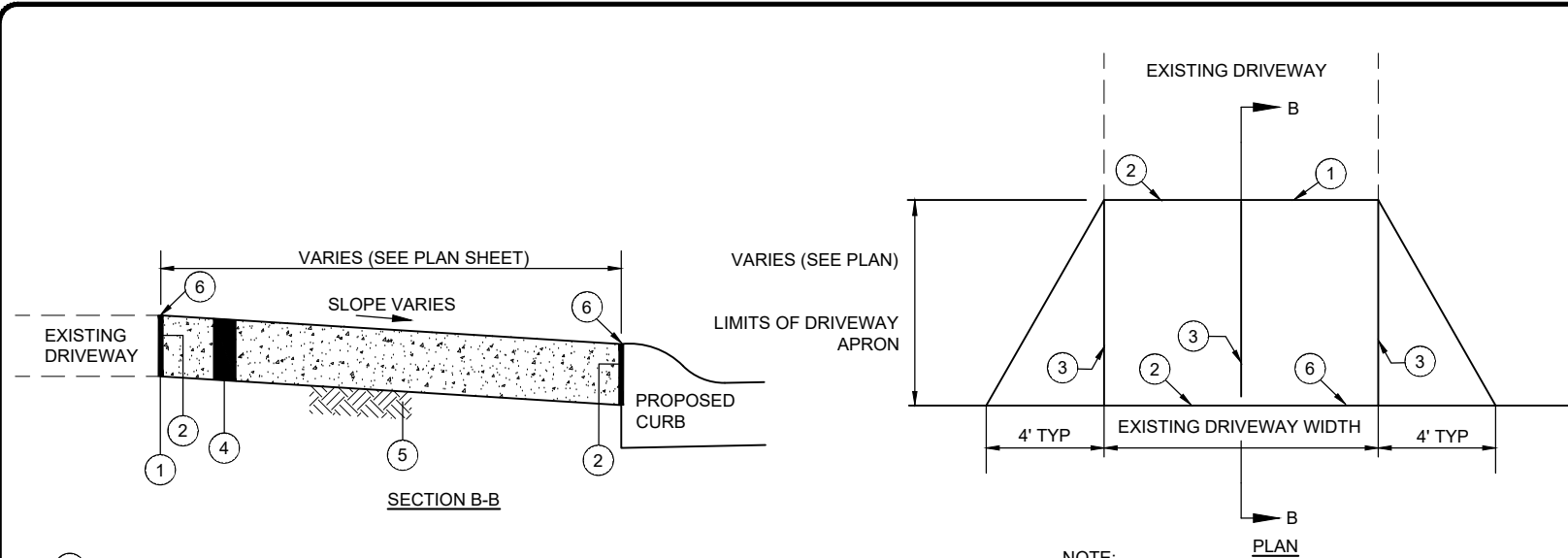
CITY OF ALEXANDRIA  
2025 STREET PROGRAM  
- CAMPBELL COUNTY, KENTUCKY -

DETAILS SHEET 3

PROJECT NO.	
32765	
DISCIPLINE	
CIVIL	
SHEET NAME	
----	
SHEET	OF
4	14

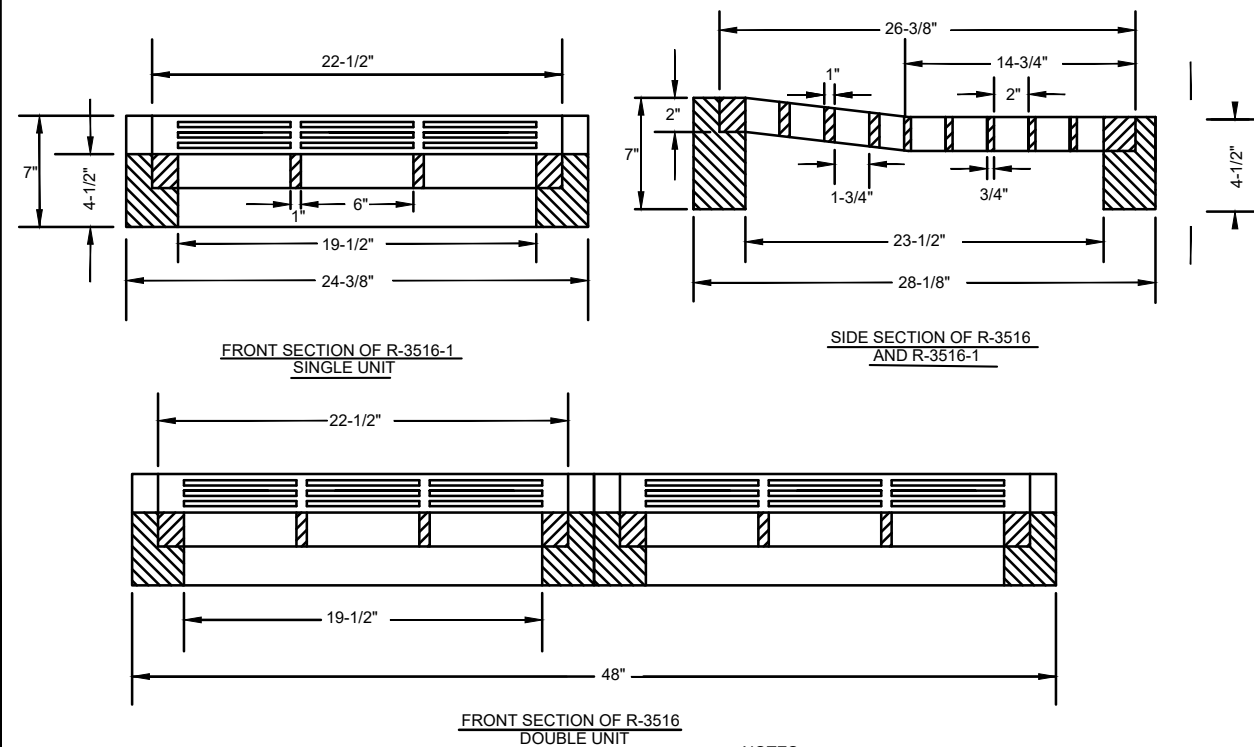


Z:\PROJECT FILES\AA\ALEXANDRIA\2025 STREET PROGRAM\ADDWGSHEETS\2765 - DETAILS SHEET DWG - DET-02 - 5/12/2025 3:59:09 PM - ROBERT SEITZINGER



- 1 SAWCUT AT NEAREST JOINT AND REMOVE EXISTING CONCRETE PAVEMENT (INCIDENTAL TO ITEM SPL)
- 2 1" PREFORMED EXPANSION JOINT MATERIAL (FLEXIBLE FOAM-CERAMAR BY W.R. MEADOWS OR APPROVED EQUAL) - INCIDENTAL TO DRIVEWAY REPLACEMENT
- 3 TOOLED JOINT
- 4 ITEM SPL - 6" CONCRETE DRIVEWAY/APRON (PER KENTON COUNTY SUBDIVISION REGULATIONS)
- 5 ITEM 207 - COMPACTED SUBGRADE (INCIDENTAL TO ITEM SPL - 6" CONCRETE DRIVEWAY/APRON)
- 6 SEAL JOINT WITH GRAY SELF LEVELING SEALANT (SIKA FLEX OR APPROVED EQUAL)

**CONCRETE DRIVEWAY REPLACEMENT  
(NO SIDEWALK)**  
N.T.S.

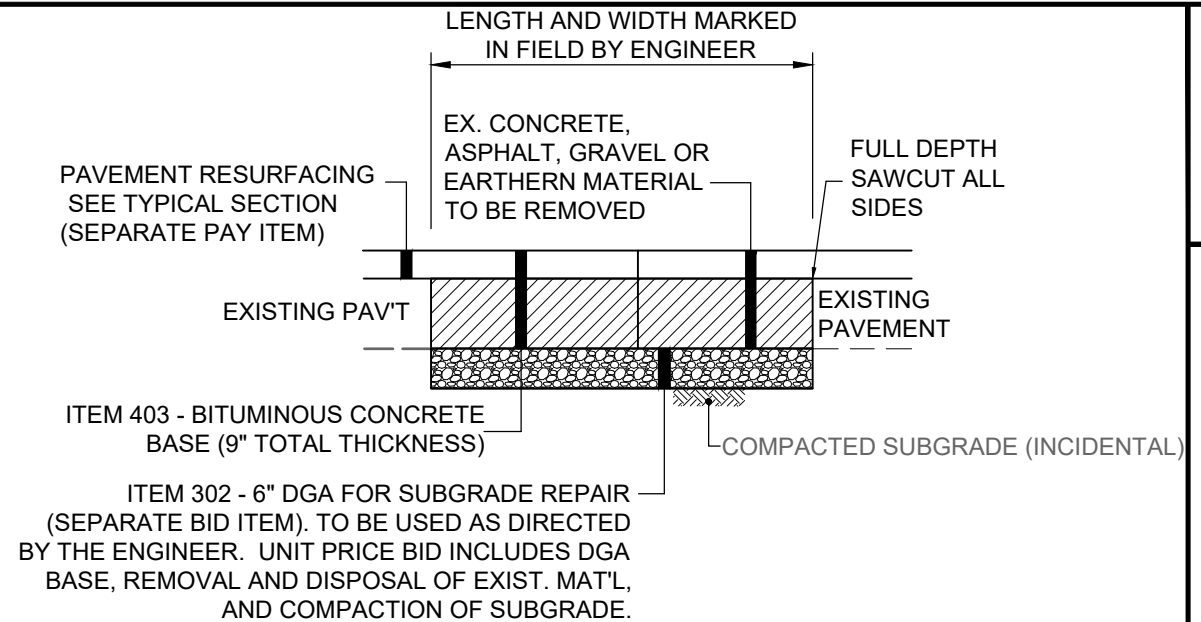


**CURB INLET FOR DRIVEWAY  
& MOUNTABLE GRATE**

- NOTES:**
1. SPECIFICATIONS PER NEENAH R-3516 SERIES OR APPROVED EQUAL.
  2. INLET CONSTRUCTION SHALL CONFORM TO DETAIL FOR STANDARD CURB INLET

NOTE:

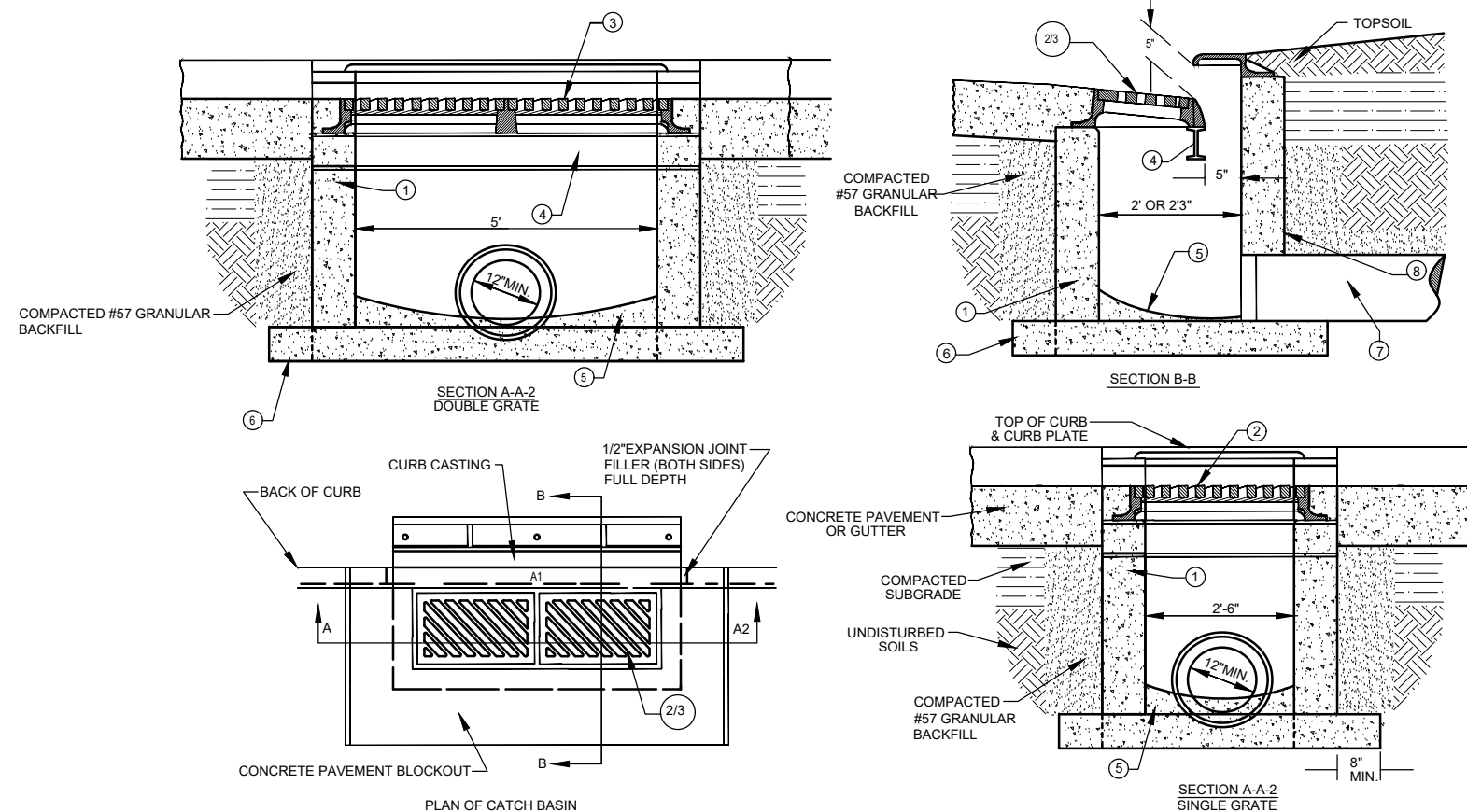
1. ANY YARD AREA DISTURBED BY THE CONSTRUCTION OF THE DRIVEWAY APRON SHALL BE RESTORED WITH TOPSOIL, SEED AND MULCH (INCIDENTAL TO CONCRETE DRIVEWAY APRON REPLACEMENT).
2. ALL EXCAVATION REQUIRED FOR THE PLACEMENT OF THE PROPOSED DRIVEWAY SHALL BE INCIDENTAL TO CONCRETE DRIVEWAY REPLACEMENT BID ITEM.



**FULL DEPTH PAVEMENT REPAIR (ASPHALT)**

N.T.S.

\* NOTE: THIS IS A CONTINGENCY ITEM TO BE USED ONLY AT THE DIRECTION OF THE ENGINEER LIMITS TO BE MARKED IN THE FIELD BY THE ENGINEER.



**STANDARD CURB INLET**  
N.T.S.

REFER TO SD1 SPEC. 02630 FOR ADDITIONAL DETAILS

- 1 CONCRETE BRICK OR SLAB BLOCK MAY BE USED IN PLACE OF PRECAST OR CAST IN PLACE CONCRETE. BLOCK OR BRICK SIDEWALLS SHALL BE 8" NOMINAL THICKNESS W/ HORIZONTAL REINFORCEMENT EVERY 16 INCHES. PARGE WITH 1/2" MORTAR, INSIDE AND OUT.
- 2 SINGLE INLET: FRAME, GRATE AND CURB PLATE - NEENAH R-3289-HV OR APPROVED EQUAL.
- 3 DOUBLE INLET: FRAME, GRATE AND CURB PLATE - NEENAH R-3288-HV2 OR APPROVED EQUAL.
- 4 5-6 X 12.5 X 6" STEEL BEAM (USE WITH SEPERATE OR BOLTED INLETS).
- 5 4" MIN. DEPTH 4000 PSI AE CONCRETE WITH SCRIBED INVERT.
- 6 6" MIN. DEPTH 4000 PSI AE CONCRETE EXTENDED MIN. 8" BEYOND EXTERIOR OF BOX.
- 7 12" MINIMUM DIAMETER PIPE.
- 8 SEAL ALL LIFTING HOLES AND JOINTS (INSIDE & OUT).

**verdantas**

BID	ISSUED FOR:
05/21/2025	ISSUE DATE:
AS SHOWN	SCALE:
BHAU	DESIGNED BY:
BHAU	DRAWN BY:
RSET	CHECKED BY:

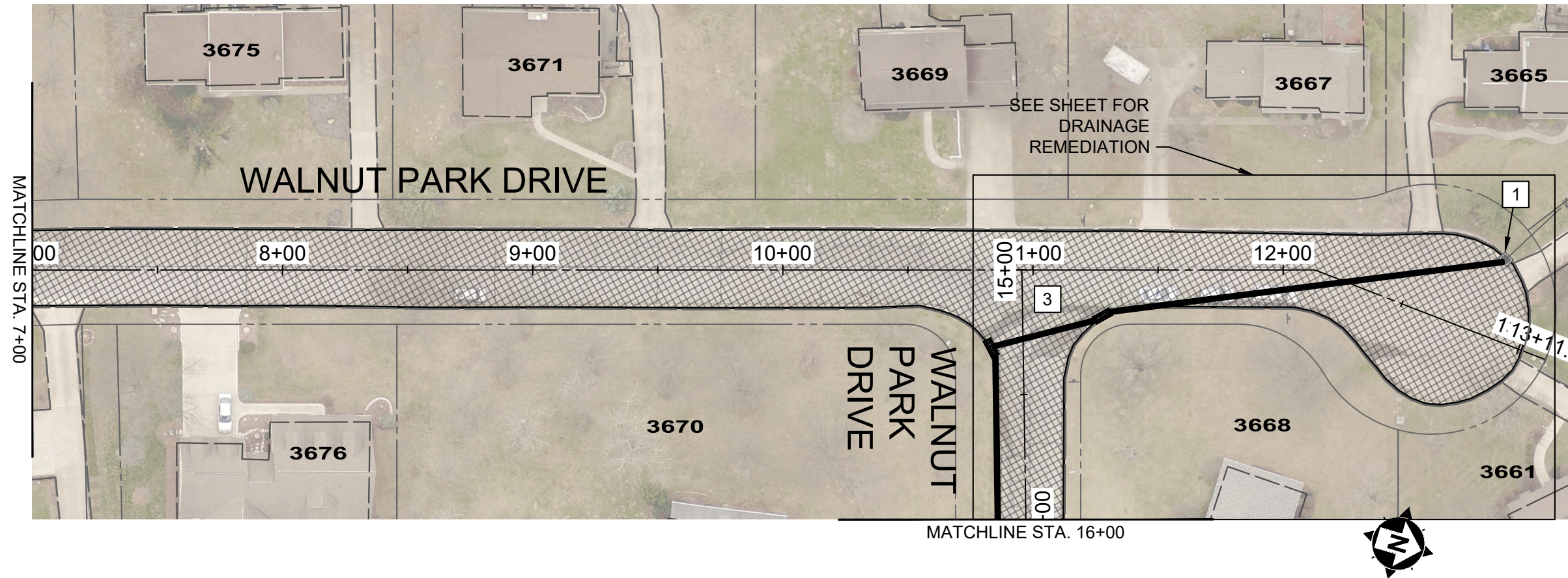
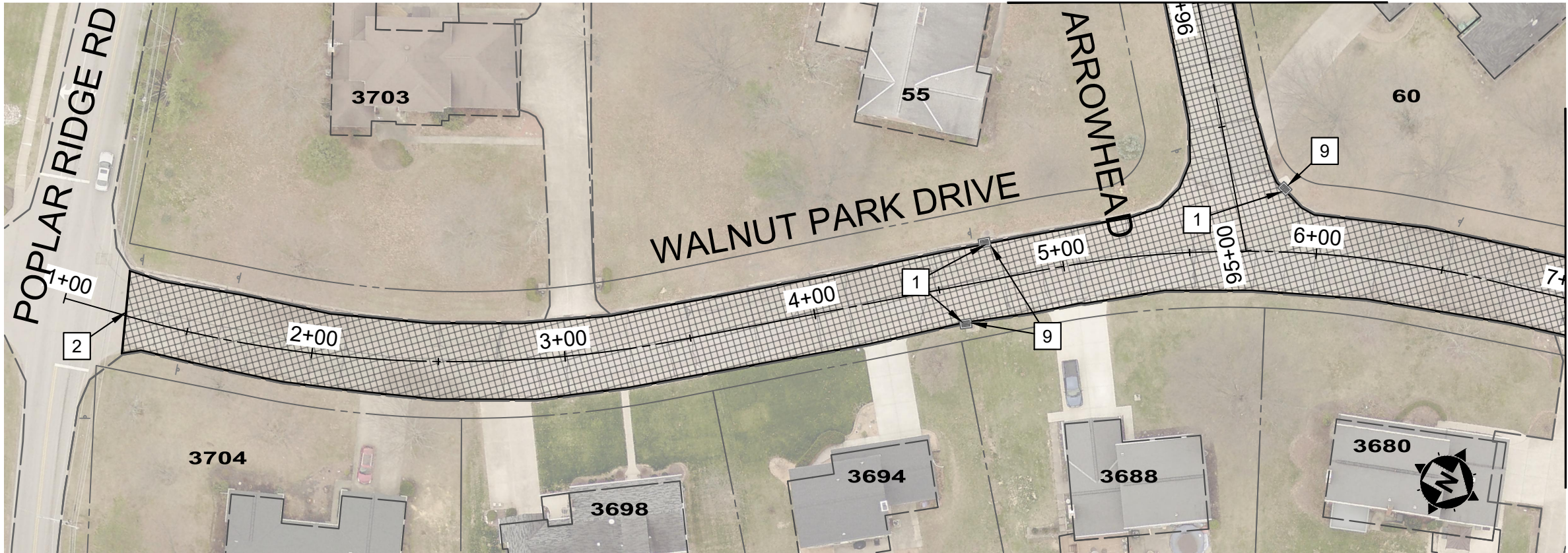
**CITY OF ALEXANDRIA  
2025 STREET PROGRAM  
- CAMPBELL COUNTY, KENTUCKY -**

**DETAILS SHEET 2**

PROJECT NO.	
<b>32765</b>	
DISCIPLINE	
<b>CIVIL</b>	
SHEET NAME	
<b>DET2</b>	
SHEET	OF
<b>5</b>	<b>14</b>



Z:\PROJECT FILES\AA\ALEXANDRIA\32765 - ALEXANDRIA 2025 STREET PROGRAM\CAD\DWG\SHEETS\32765 - ALEXANDRIA 25 STREET PROGRAM.DWG - WALNUT 1-12 - 5/12/2025 9:55:55 PM - ROBERT SEITZINGER

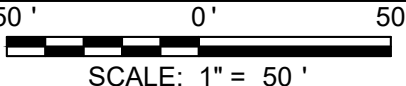


CONSTRUCTION NOTES

- 1 MILL AROUND INLET AND/OR TAPER ASPHALT TO EXITING STORM INLET.
- 2 MATCH EX. PAVEMENT.
- 3 DURING AND/OR AFTER PAVEMENT MILLING, THE ENGINEER SHALL MARK ALL AREAS OF REQUIRED FULL DEPTH PAVEMENT REPAIRS. NO NEW ASPHALT PAVEMENT SHALL BE PLACED UNTIL THE ENGINEER HAS INSPECTED THE STREET FOR FULL DEPTH REPAIRS.
- 4 ADJUST WATER VALVE TO FINISHED GRADE PER NKWD REQUIREMENTS AS NEEDED. THE COST OF ADJUSTMENT SHALL BE INCIDENTAL TO THE OVERALL CONTRACT.
- 5 LIMITS OF CURB REPLACEMENT BE MARKED IN FIELD.
- 6 ROLLED CURB REPLACEMENT
- 7 ADJUST MANHOLE TO GRADE
- 8 REPLACE DRIVEWAY APRON LIMITS TO BE MARKED IN FIELD
- 9 REPLACE DBI

IMPROVEMENT LEGEND

- ASPHALT OVERLAY OF EX CONCRETE  
SEE DETAIL
- ASPHALT RESURFACING (MILL & OVERLAY)  
SEE DETAIL



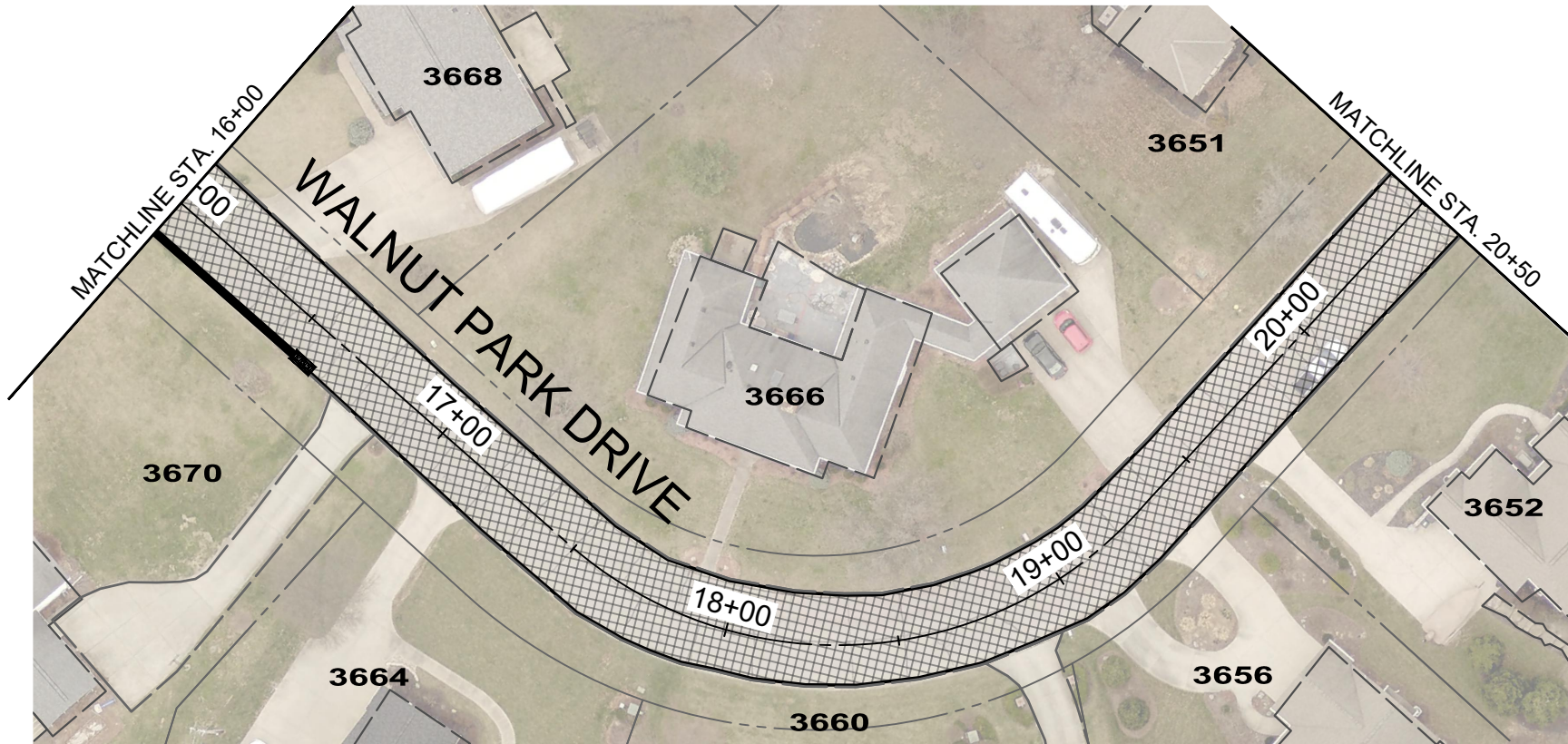
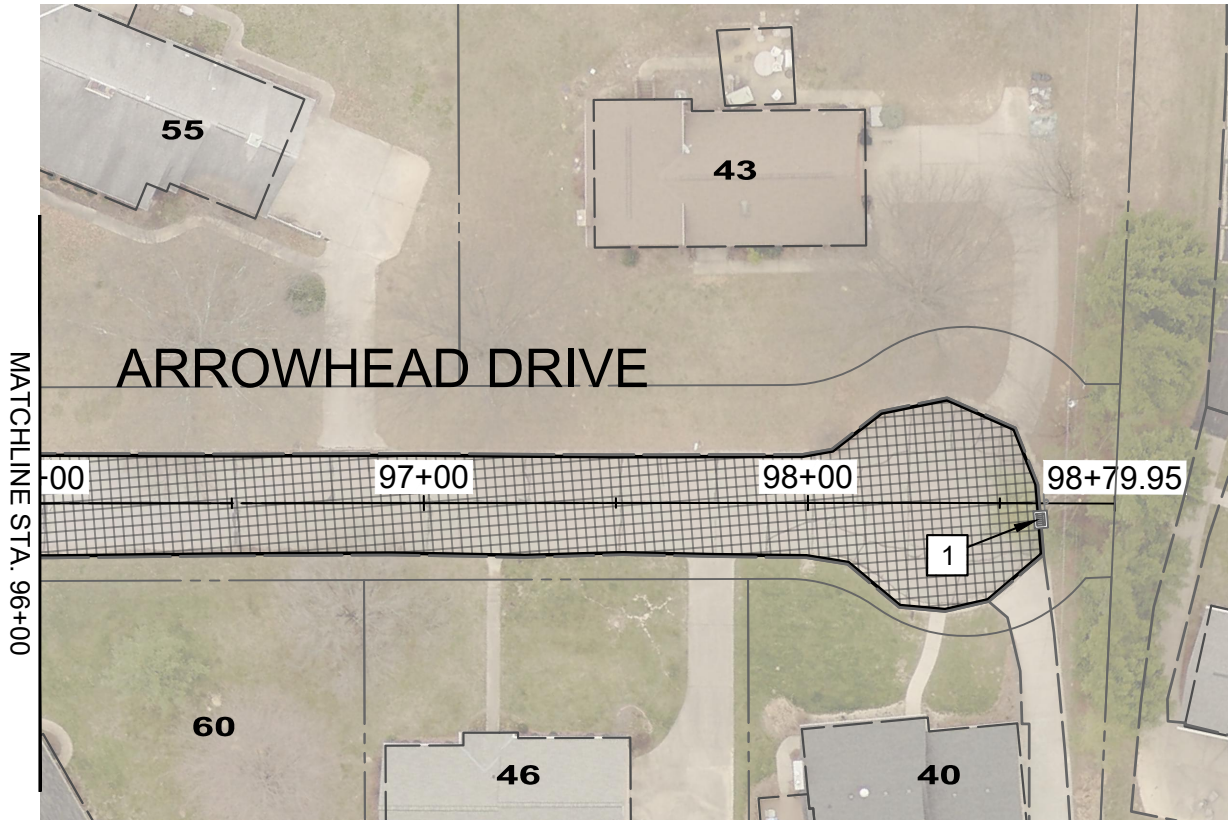
CITY OF ALEXANDRIA  
2025 STREET PROGRAM  
- CAMPBELL COUNTY, KENTUCKY -

WALNUT PARK DR STA. 1-16

PROJECT NO.	
32765	
DISCIPLINE	
CIVIL	
SHEET NAME	
PLN1	
SHEET	OF
6	14



Z:\PROJECT FILES\AA\ALEXANDRIA\32765 - ALEXANDRIA 2025 STREET PROGRAM\DWG\SHEETS\32765 - ALEXANDRIA 25 STREET PROGRAM.DWG - WALNUT 15-20.5 ARR - 5/12/2025 3:58:55 PM - ROBERT SEITZINGER

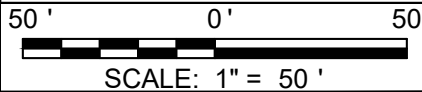


CONSTRUCTION NOTES

- 1 MILL AROUND INLET AND/OR TAPER ASPHALT TO EXITING STORM INLET.
- 2 MATCH EX. PAVEMENT.
- 3 DURING AND/OR AFTER PAVEMENT MILLING, THE ENGINEER SHALL MARK ALL AREAS OF REQUIRED FULL DEPTH PAVEMENT REPAIRS. NO NEW ASPHALT PAVEMENT SHALL BE PLACED UNTIL THE ENGINEER HAS INSPECTED THE STREET FOR FULL DEPTH REPAIRS.
- 4 ADJUST WATER VALVE TO FINISHED GRADE PER NKWD REQUIREMENTS AS NEEDED. THE COST OF ADJUSTMENT SHALL BE INCIDENTAL TO THE OVERALL CONTRACT.
- 5 LIMITS OF CURB REPLACEMENT BE MARKED IN FIELD.
- 6 ROLLED CURB REPLACEMENT
- 7 ADJUST MANHOLE TO GRADE
- 8 REPLACE DRIVEWAY APRON LIMITS TO BE MARKED IN FIELD
- 9 REPLACE DBI

IMPROVEMENT LEGEND

- ASPHALT OVERLAY OF EX CONCRETE  
SEE DETAIL
- ASPHALT RESURFACING (MILL & OVERLAY)  
SEE DETAIL



verdantas

ISSUED FOR:	BID
ISSUE DATE:	05/21/2025
SCALE:	AS SHOWN
DESIGNED BY:	BHAU
DRAWN BY:	BHAU
CHECKED BY:	RSEI

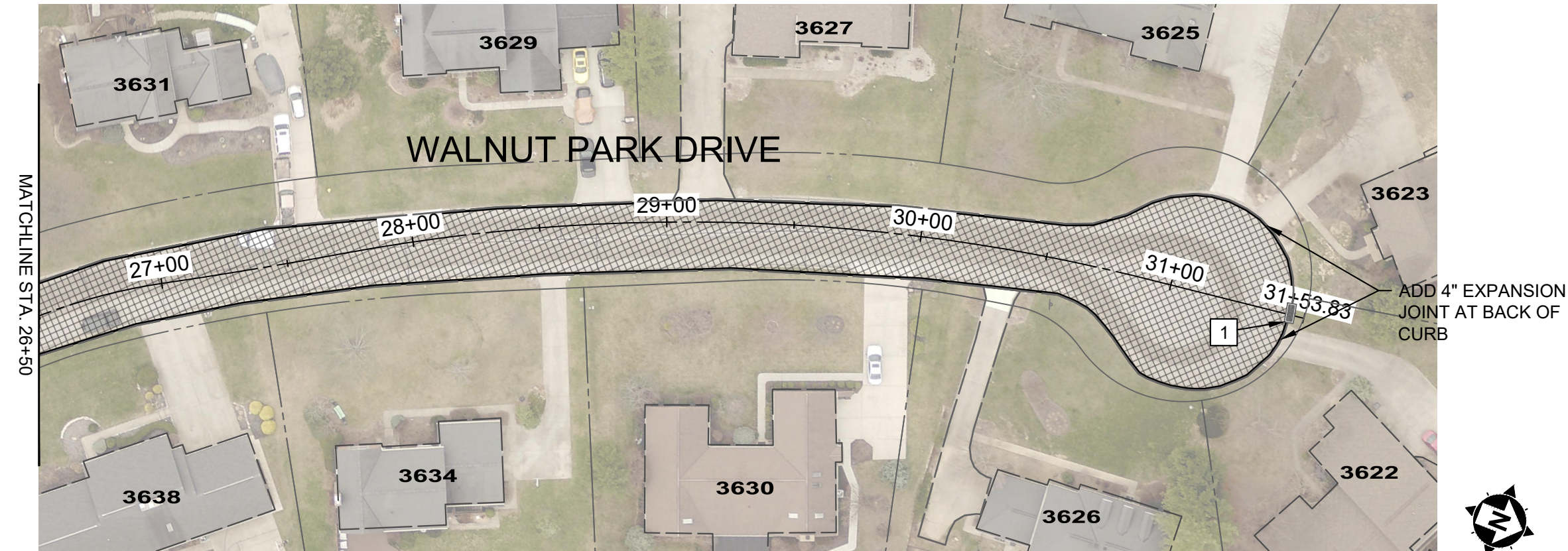
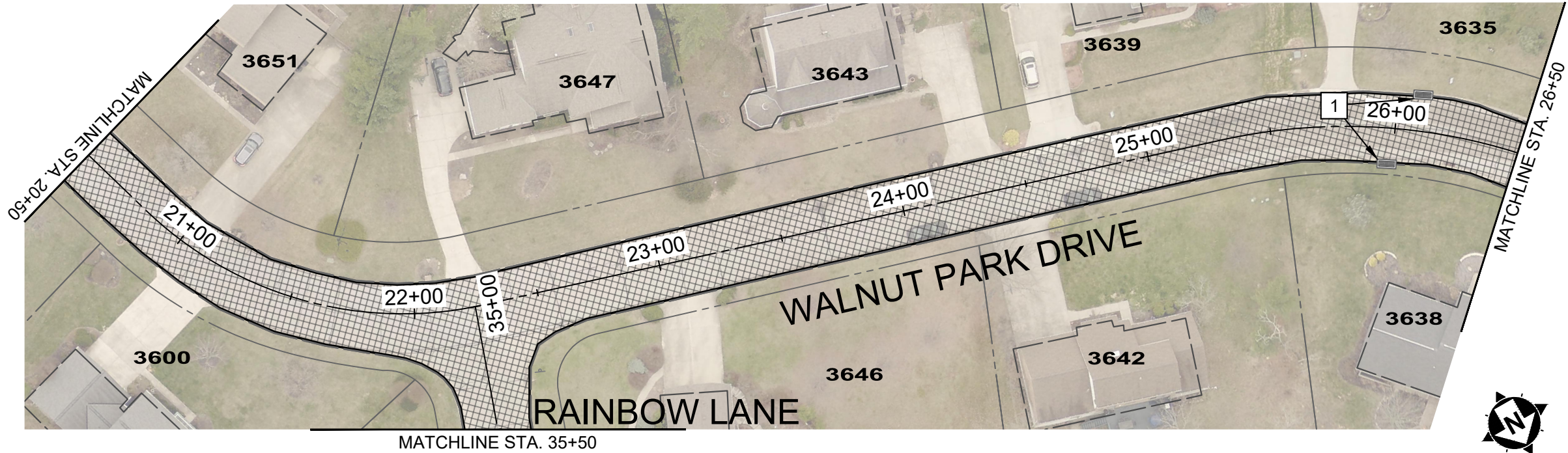
CITY OF ALEXANDRIA  
2025 STREET PROGRAM  
- CAMPBELL COUNTY, KENTUCKY -

WALNUT PARK DR STA. 16-20.5,  
ARROWHEAD DR

PROJECT NO.	
32765	
DISCIPLINE	
CIVIL	
SHEET NAME	
PLN2	
SHEET	OF
7	14



Z:\PROJECT FILES\AA\ALEXANDRIA\2025 STREET PROGRAM\DWG\SHEETS\32765 - ALEXANDRIA 25 STREET PROGRAM.DWG - WALNUT 20.5-31 - 5/12/2025 3:58:55 PM - ROBERT SEITZINGER

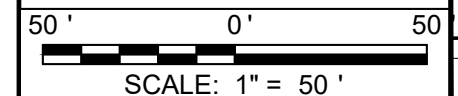


CONSTRUCTION NOTES

- 1 MILL AROUND INLET AND/OR TAPER ASPHALT TO EXITING STORM INLET.
- 2 MATCH EX. PAVEMENT.
- 3 DURING AND/OR AFTER PAVEMENT MILLING, THE ENGINEER SHALL MARK ALL AREAS OF REQUIRED FULL DEPTH PAVEMENT REPAIRS. NO NEW ASPHALT PAVEMENT SHALL BE PLACED UNTIL THE ENGINEER HAS INSPECTED THE STREET FOR FULL DEPTH REPAIRS.
- 4 ADJUST WATER VALVE TO FINISHED GRADE PER NKWD REQUIREMENTS AS NEEDED. THE COST OF ADJUSTMENT SHALL BE INCIDENTAL TO THE OVERALL CONTRACT.
- 5 LIMITS OF CURB REPLACEMENT BE MARKED IN FIELD.
- 6 ROLLED CURB REPLACEMENT
- 7 ADJUST MANHOLE TO GRADE
- 8 REPLACE DRIVEWAY APRON LIMITS TO BE MARKED IN FIELD
- 9 REPLACE DBI

IMPROVEMENT LEGEND

- ASPHALT OVERLAY OF EX CONCRETE  
SEE DETAIL
- ASPHALT RESURFACING (MILL & OVERLAY)  
SEE DETAIL



verdantas

ISSUED FOR:	BID
ISSUE DATE:	05/21/2025
SCALE:	AS SHOWN
DESIGNED BY:	BHAU
DRAWN BY:	BHAU
CHECKED BY:	RSEI

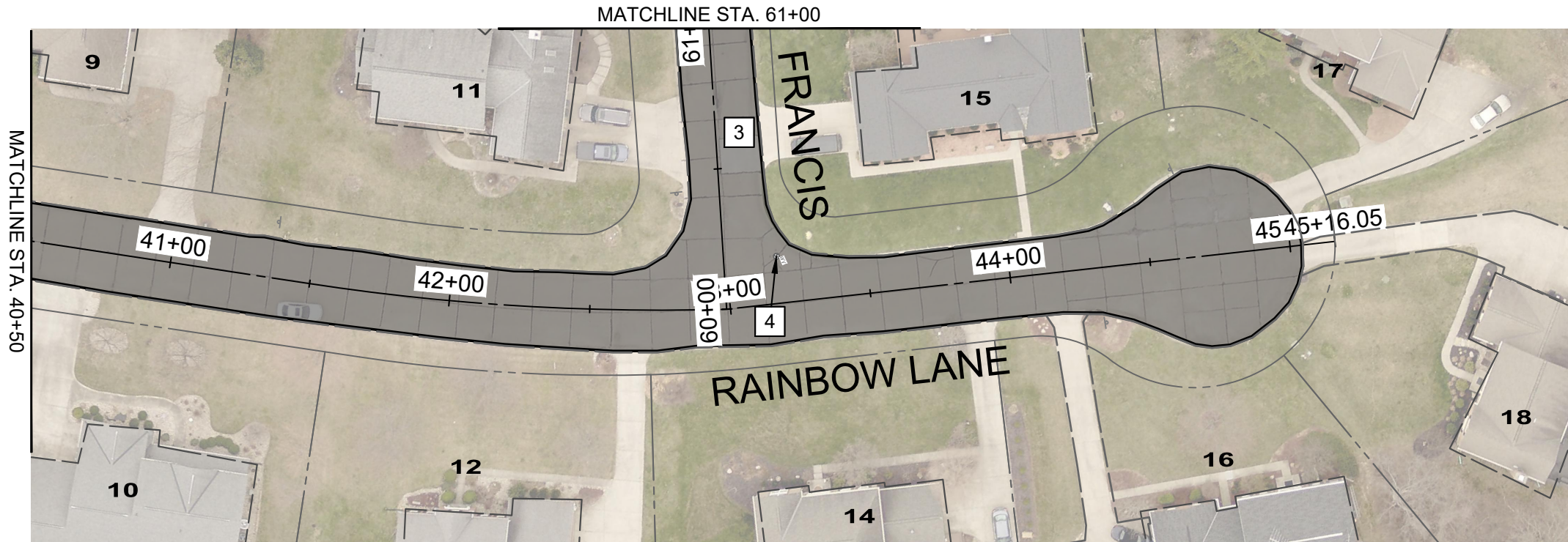
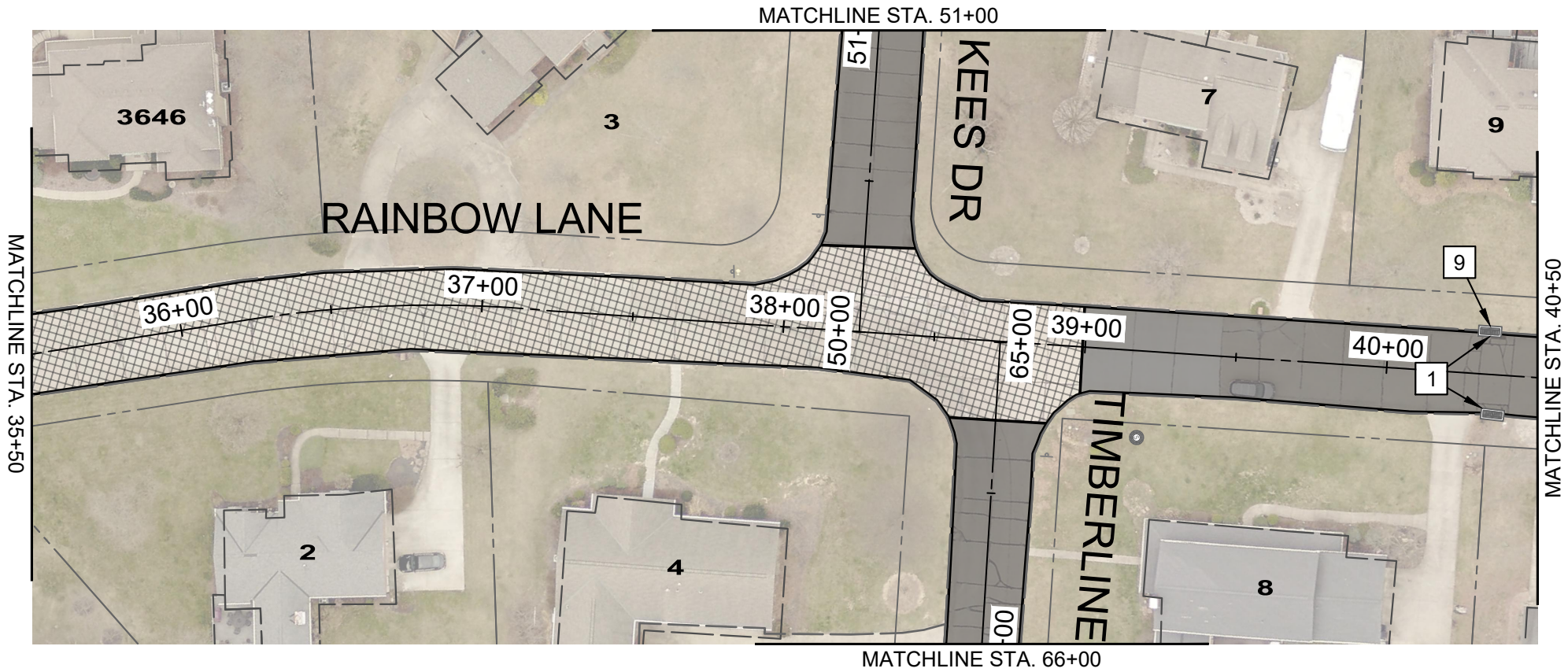
CITY OF ALEXANDRIA  
2025 STREET PROGRAM  
- CAMPBELL COUNTY, KENTUCKY -

WALNUT PARK DR STA. 20.5-31

PROJECT NO.	
32765	
DISCIPLINE	
CIVIL	
SHEET NAME	
PLN3	
SHEET	OF
8	14



Z:\PROJECT FILES\AA\ALEXANDRIA\32765 - ALEXANDRIA 2025 STREET PROGRAM\CAD\DWG\SHEETS\32765 - ALEXANDRIA 25 STREET PROGRAM.DWG - RAINBOW 35-45 - 5/12/2025 3:58:55 PM - ROBERT SEITZINGER

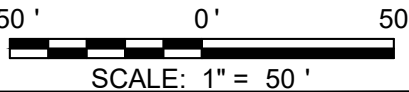


CONSTRUCTION NOTES

- 1 MILL AROUND INLET AND/OR TAPER ASPHALT TO EXITING STORM INLET.
- 2 MATCH EX. PAVEMENT.
- 3 DURING AND/OR AFTER PAVEMENT MILLING, THE ENGINEER SHALL MARK ALL AREAS OF REQUIRED FULL DEPTH PAVEMENT REPAIRS. NO NEW ASPHALT PAVEMENT SHALL BE PLACED UNTIL THE ENGINEER HAS INSPECTED THE STREET FOR FULL DEPTH REPAIRS.
- 4 ADJUST WATER VALVE TO FINISHED GRADE PER NKWD REQUIREMENTS AS NEEDED. THE COST OF ADJUSTMENT SHALL BE INCIDENTAL TO THE OVERALL CONTRACT.
- 5 LIMITS OF CURB REPLACEMENT BE MARKED IN FIELD.
- 6 ROLLED CURB REPLACEMENT
- 7 ADJUST MANHOLE TO GRADE
- 8 REPLACE DRIVEWAY APRON LIMITS TO BE MARKED IN FIELD
- 9 REPLACE DBI

IMPROVEMENT LEGEND

- ASPHALT OVERLAY OF EX CONCRETE SEE DETAIL
- ASPHALT RESURFACING (MILL & OVERLAY) SEE DETAIL



verdantas

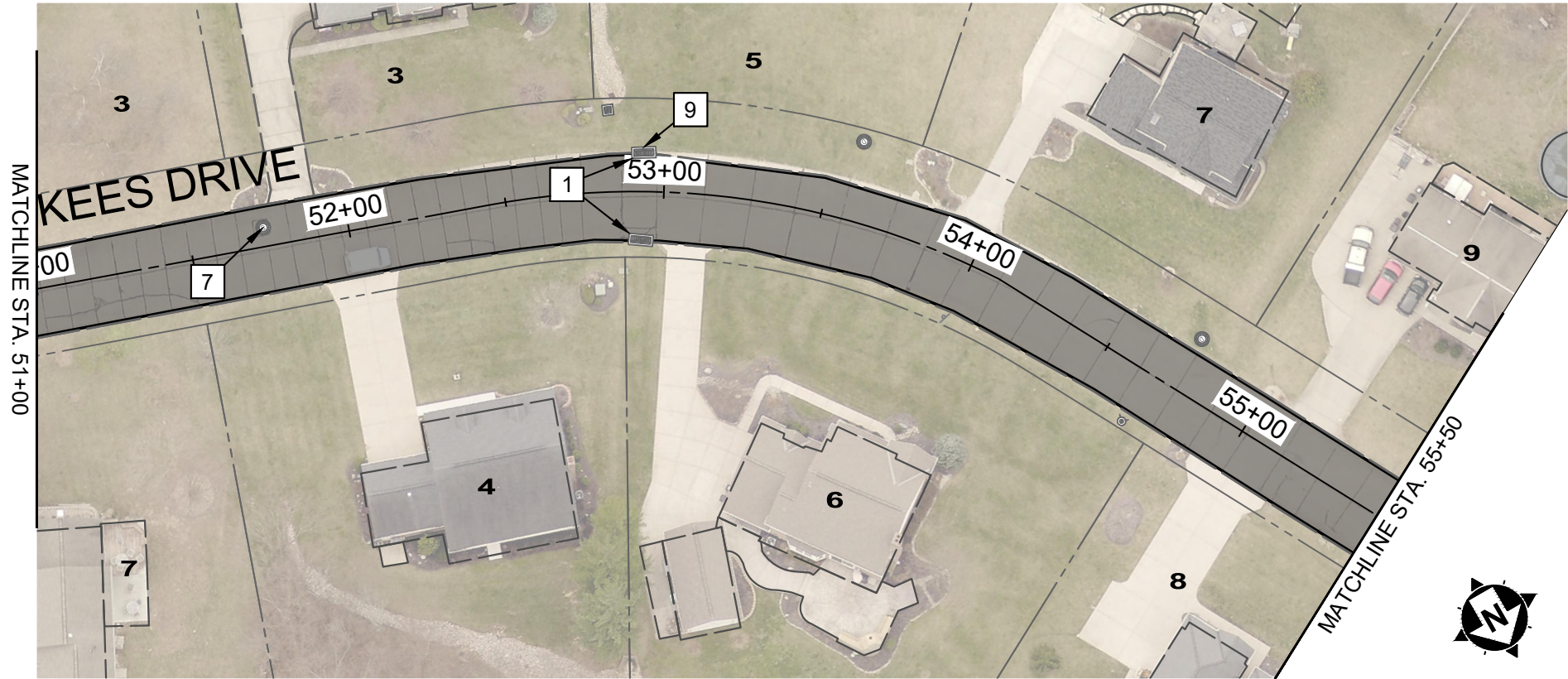
ISSUED FOR:	BID
ISSUE DATE:	05/21/2025
SCALE:	AS SHOWN
DESIGNED BY:	BHAU
DRAWN BY:	BHAU
CHECKED BY:	RSET

CITY OF ALEXANDRIA  
2025 STREET PROGRAM  
- CAMPBELL COUNTY, KENTUCKY -  
  
RAINBOW LN STA. 35-45

PROJECT NO.	
32765	
DISCIPLINE	
CIVIL	
SHEET NAME	
PLN4	
SHEET	OF
9	14



Z:\PROJECT FILES\AA\ALEXANDRIA\2025 STREET PROGRAM\CADD\WGSHETS\32765 - ALEXANDRIA 25 STREET PROGRAM.DWG - KEES FRANCIS - 5/12/2025 3:58:55 PM - ROBERT SEITZINGER

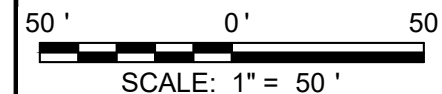


CONSTRUCTION NOTES

- 1 MILL AROUND INLET AND/OR TAPER ASPHALT TO EXITING STORM INLET.
- 2 MATCH EX. PAVEMENT.
- 3 DURING AND/OR AFTER PAVEMENT MILLING, THE ENGINEER SHALL MARK ALL AREAS OF REQUIRED FULL DEPTH PAVEMENT REPAIRS. NO NEW ASPHALT PAVEMENT SHALL BE PLACED UNTIL THE ENGINEER HAS INSPECTED THE STREET FOR FULL DEPTH REPAIRS.
- 4 ADJUST WATER VALVE TO FINISHED GRADE PER NKWD REQUIREMENTS AS NEEDED. THE COST OF ADJUSTMENT SHALL BE INCIDENTAL TO THE OVERALL CONTRACT.
- 5 LIMITS OF CURB REPLACEMENT BE MARKED IN FIELD.
- 6 ROLLED CURB REPLACEMENT
- 7 ADJUST MANHOLE TO GRADE
- 8 REPLACE DRIVEWAY APRON LIMITS TO BE MARKED IN FIELD
- 9 REPLACE DBI

IMPROVEMENT LEGEND

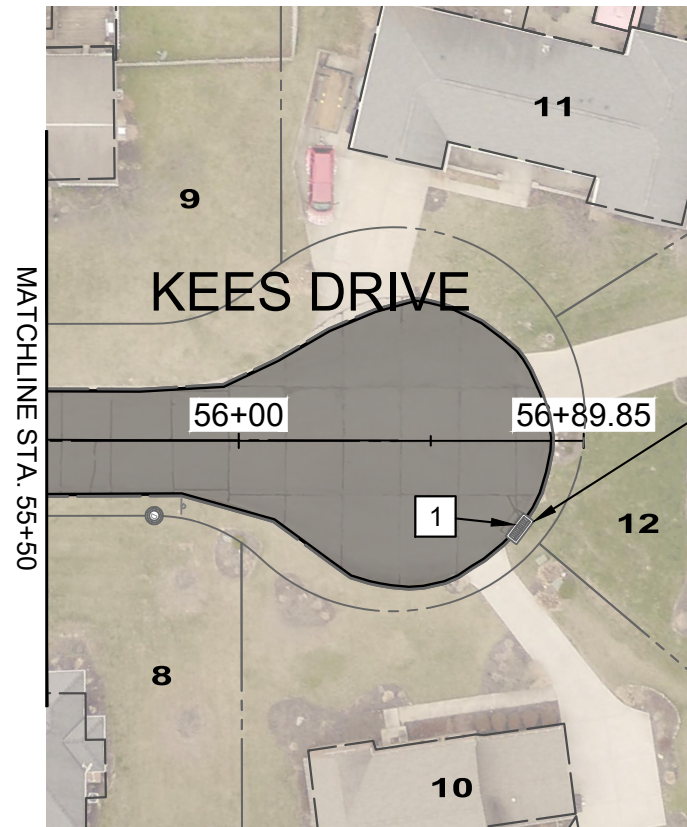
- ASPHALT OVERLAY OF EX CONCRETE SEE DETAIL
- ASPHALT RESURFACING (MILL & OVERLAY) SEE DETAIL



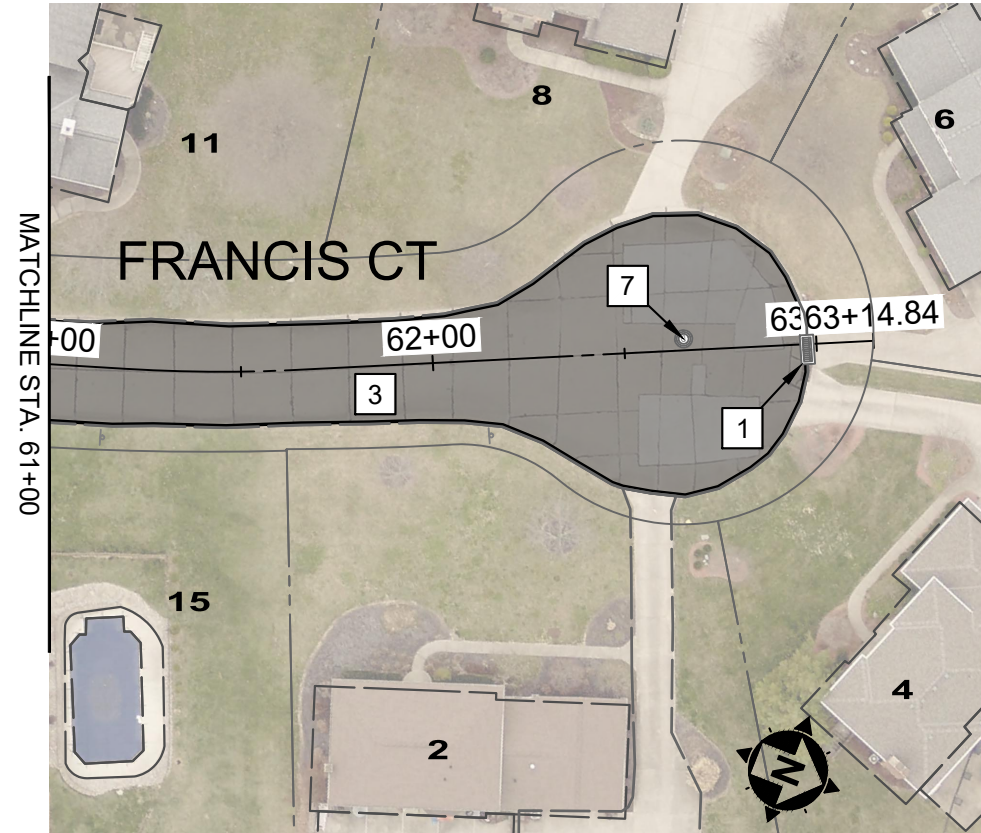
ISSUED FOR:	BID
ISSUE DATE:	05/21/2025
SCALE:	AS SHOWN
DESIGNED BY:	BHAU
DRAWN BY:	BHAU
CHECKED BY:	RSET

CITY OF ALEXANDRIA  
2025 STREET PROGRAM  
- CAMPBELL COUNTY, KENTUCKY -  
KEES DR & FRANCIS CT

PROJECT NO.	
32765	
DISCIPLINE	
CIVIL	
SHEET NAME	
PLN5	
SHEET	OF
10	14

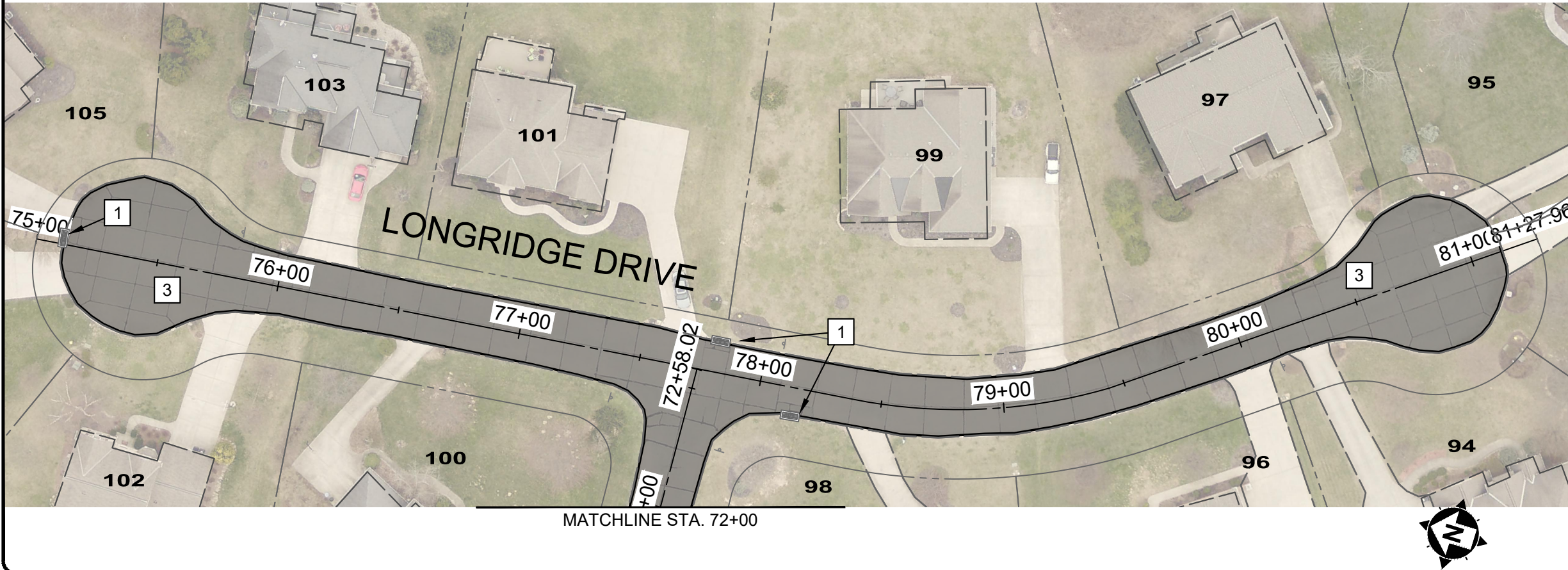
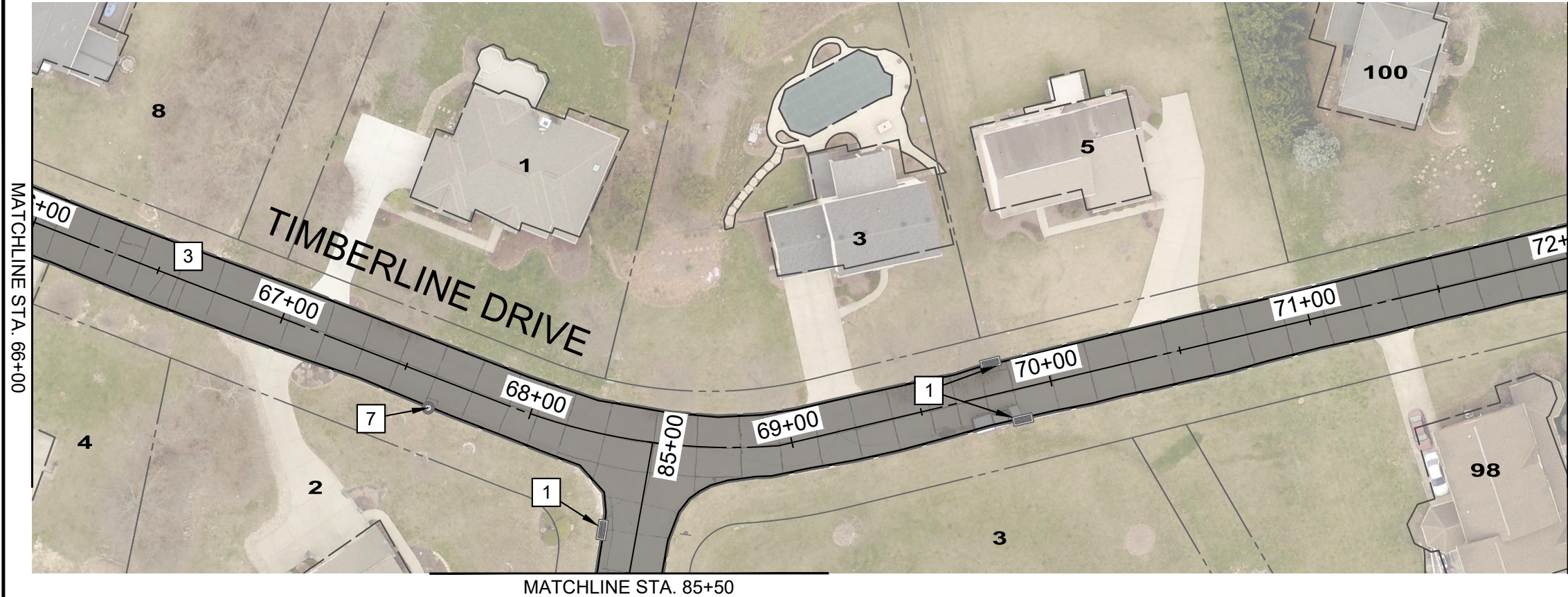


PATCH BACK SIDE OF DBI, RESTORE DISTURBED AREA





Z:\PROJECT FILES\AA\ALEXANDRIA\2025 STREET PROGRAM\CAD\DWG\SHEET\32765 - ALEXANDRIA 2025 STREET PROGRAM\DWG - TIMBERLINE DR - 5/12/2025 3:59:55 PM - ROBERT SEITZINGER

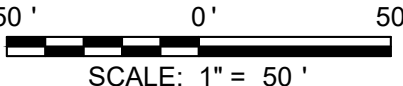


CONSTRUCTION NOTES

- 1 MILL AROUND INLET AND/OR TAPER ASPHALT TO EXITING STORM INLET.
- 2 MATCH EX. PAVEMENT.
- 3 DURING AND/OR AFTER PAVEMENT MILLING, THE ENGINEER SHALL MARK ALL AREAS OF REQUIRED FULL DEPTH PAVEMENT REPAIRS. NO NEW ASPHALT PAVEMENT SHALL BE PLACED UNTIL THE ENGINEER HAS INSPECTED THE STREET FOR FULL DEPTH REPAIRS.
- 4 ADJUST WATER VALVE TO FINISHED GRADE PER NKWD REQUIREMENTS AS NEEDED. THE COST OF ADJUSTMENT SHALL BE INCIDENTAL TO THE OVERALL CONTRACT.
- 5 LIMITS OF CURB REPLACEMENT BE MARKED IN FIELD.
- 6 ROLLED CURB REPLACEMENT
- 7 ADJUST MANHOLE TO GRADE
- 8 REPLACE DRIVEWAY APRON LIMITS TO BE MARKED IN FIELD
- 9 REPLACE DBI

IMPROVEMENT LEGEND

- ASPHALT OVERLAY OF EX CONCRETE SEE DETAIL
- ASPHALT RESURFACING (MILL & OVERLAY) SEE DETAIL



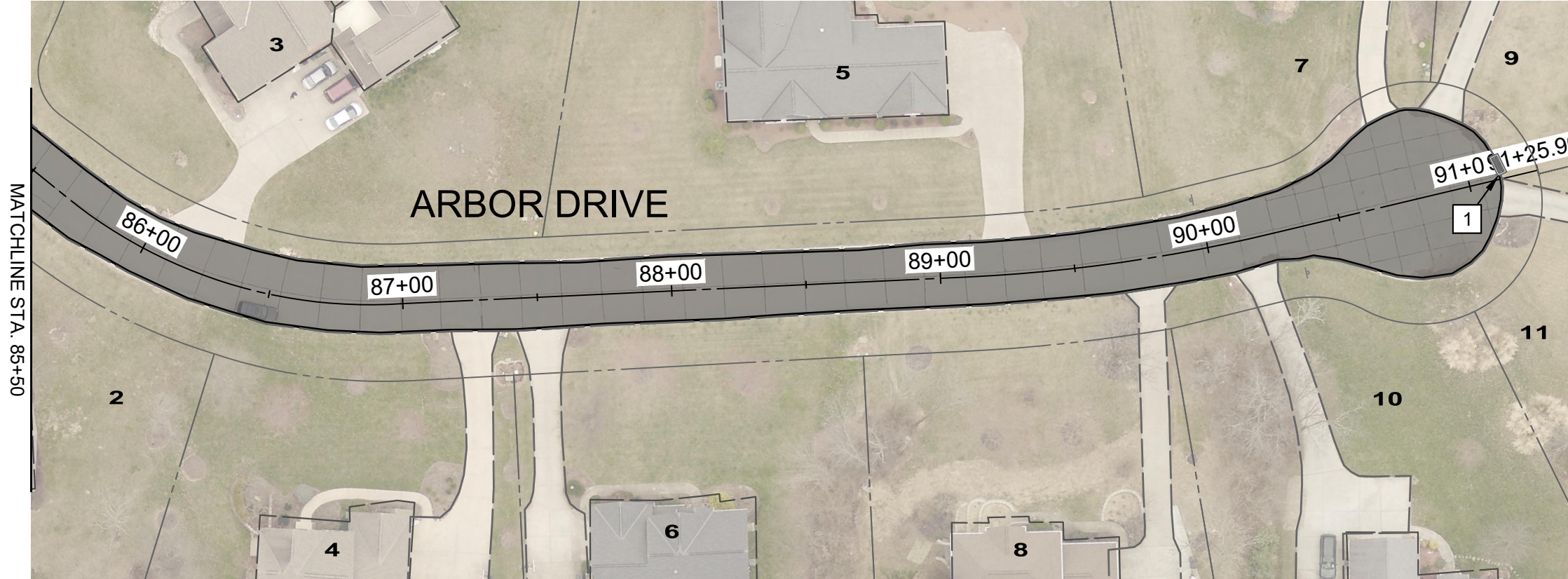
CITY OF ALEXANDRIA  
2025 STREET PROGRAM  
- CAMPBELL COUNTY, KENTUCKY -

TIMBERLINE DR & LONGRIDGE DR

PROJECT NO.	
32765	
DISCIPLINE	
CIVIL	
SHEET NAME	
PLN6	
SHEET	OF
11	14



Z:\PROJECT FILES\AA\ALEXANDRIA\32765 - ALEXANDRIA 2025 STREET PROGRAM\CADD\WGSHETS\32765 - ALEXANDRIA 25 STREET PROGRAM.DWG - ARBOR - 5/12/2025 3:58:55 PM - ROBERT SEITZINGER

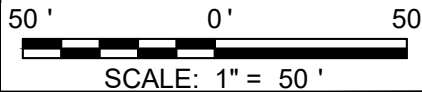


CONSTRUCTION NOTES

- 1 MILL AROUND INLET AND/OR TAPER ASPHALT TO EXITING STORM INLET.
- 2 MATCH EX. PAVEMENT.
- 3 DURING AND/OR AFTER PAVEMENT MILLING, THE ENGINEER SHALL MARK ALL AREAS OF REQUIRED FULL DEPTH PAVEMENT REPAIRS. NO NEW ASPHALT PAVEMENT SHALL BE PLACED UNTIL THE ENGINEER HAS INSPECTED THE STREET FOR FULL DEPTH REPAIRS.
- 4 ADJUST WATER VALVE TO FINISHED GRADE PER NKWD REQUIREMENTS AS NEEDED. THE COST OF ADJUSTMENT SHALL BE INCIDENTAL TO THE OVERALL CONTRACT.
- 5 LIMITS OF CURB REPLACEMENT BE MARKED IN FIELD.
- 6 ROLLED CURB REPLACEMENT
- 7 ADJUST MANHOLE TO GRADE
- 8 REPLACE DRIVEWAY APRON LIMITS TO BE MARKED IN FIELD
- 9 REPLACE DBI

IMPROVEMENT LEGEND

- ASPHALT OVERLAY OF EX CONCRETE  
SEE DETAIL
- ASPHALT RESURFACING (MILL & OVERLAY)  
SEE DETAIL



ISSUED FOR:	BID
ISSUE DATE:	05/21/2025
SCALE:	AS SHOWN
DESIGNED BY:	BHAU
DRAWN BY:	BHAU
CHECKED BY:	RSEI

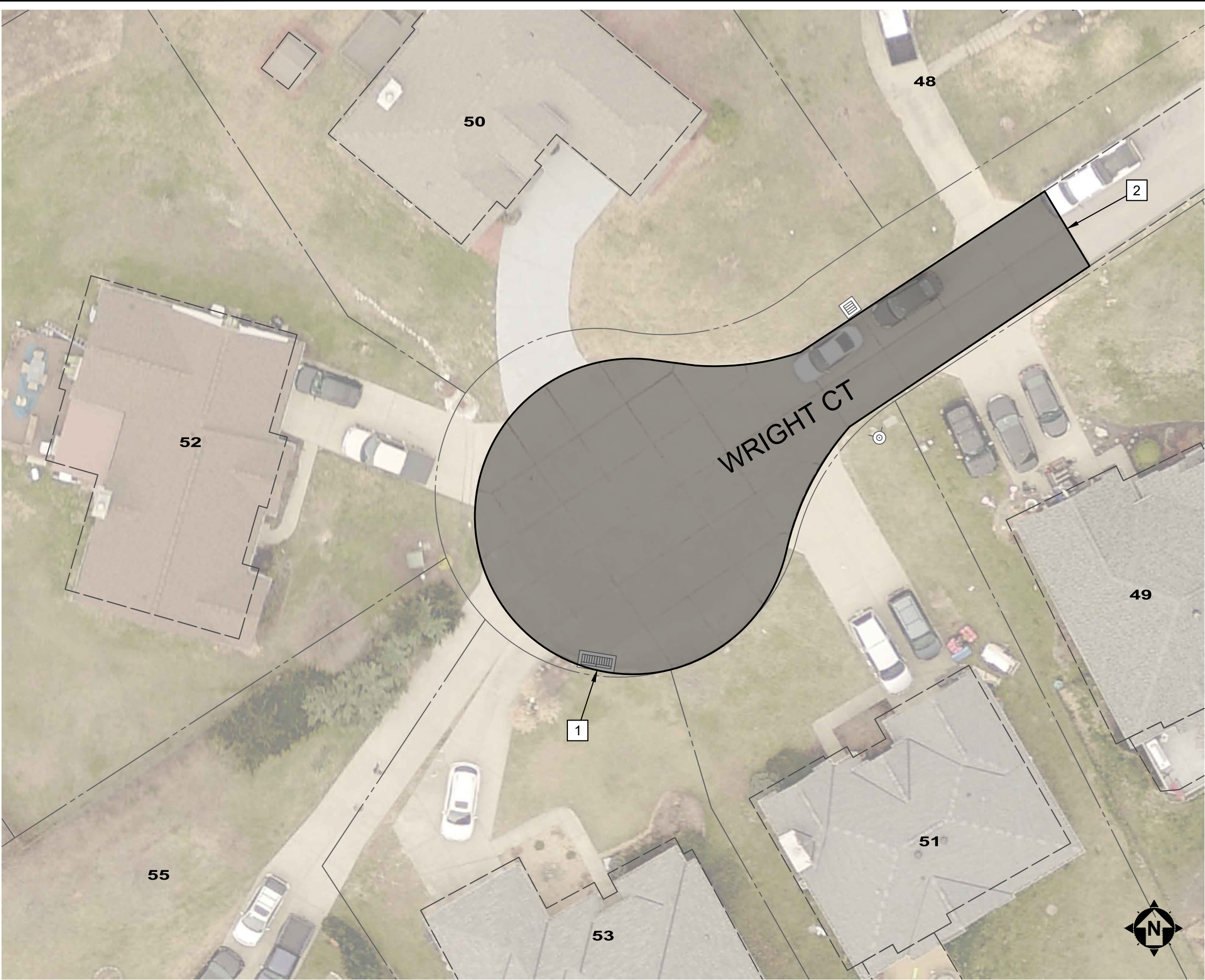
CITY OF ALEXANDRIA  
2025 STREET PROGRAM  
- CAMPBELL COUNTY, KENTUCKY -

ARBOR DRIVE

PROJECT NO.	
32765	
DISCIPLINE	
CIVIL	
SHEET NAME	
PLN7	
SHEET	OF
12	14



Z:\PROJECT FILES\AA\ALEXANDRIA\2025 STREET PROGRAM\DWG\SHEETS\32765 - ALEXANDRIA 25 STREET PROGRAM.DWG - WRIGHT, CT - 5/12/2025 3:58:55 PM - ROBERT SEITZINGER

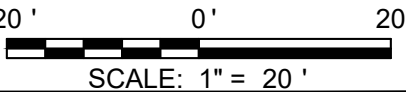


CONSTRUCTION NOTES

- 1 MILL AROUND INLET AND/OR TAPER ASPHALT TO EXITING STORM INLET.
- 2 MATCH EX. PAVEMENT.
- 3 DURING AND/OR AFTER PAVEMENT MILLING, THE ENGINEER SHALL MARK ALL AREAS OF REQUIRED FULL DEPTH PAVEMENT REPAIRS. NO NEW ASPHALT PAVEMENT SHALL BE PLACED UNTIL THE ENGINEER HAS INSPECTED THE STREET FOR FULL DEPTH REPAIRS.
- 4 ADJUST WATER VALVE TO FINISHED GRADE PER NKWD REQUIREMENTS AS NEEDED. THE COST OF ADJUSTMENT SHALL BE INCIDENTAL TO THE OVERALL CONTRACT.
- 5 LIMITS OF CURB REPLACEMENT BE MARKED IN FIELD.
- 6 ROLLED CURB REPLACEMENT
- 7 ADJUST MANHOLE TO GRADE
- 8 REPLACE DRIVEWAY APRON LIMITS TO BE MARKED IN FIELD
- 9 REPLACE DBI

IMPROVEMENT LEGEND

- ASPHALT OVERLAY OF EX CONCRETE  
SEE DETAIL
- ASPHALT RESURFACING (MILL & OVERLAY)  
SEE DETAIL



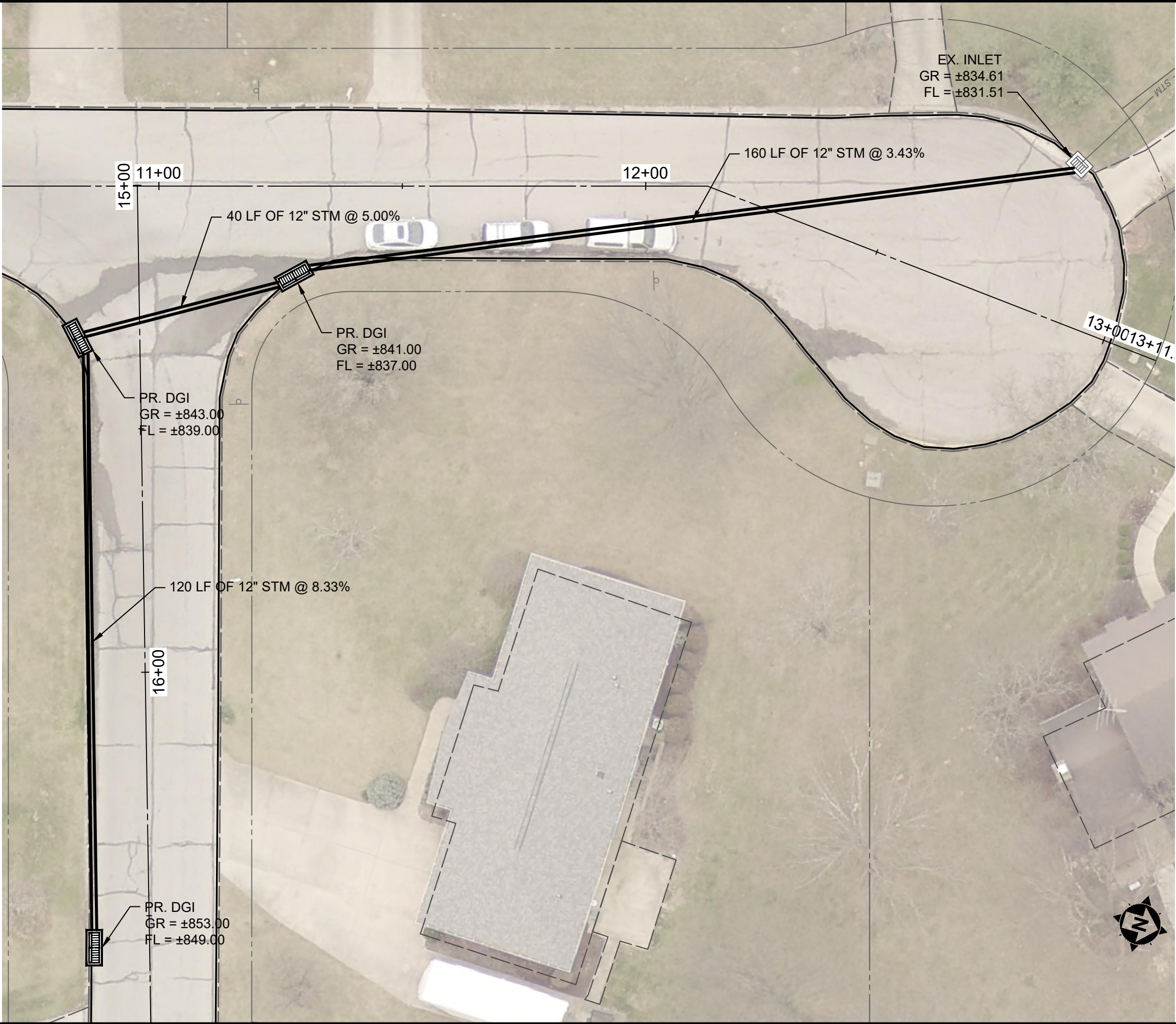
CITY OF ALEXANDRIA  
2025 STREET PROGRAM  
- CAMPBELL COUNTY, KENTUCKY -

WRIGHT CT

PROJECT NO.	
32765	
DISCIPLINE	
CIVIL	
SHEET NAME	
----	
SHEET	OF
13	14



Z:\PROJECT FILES\AA\ALEXANDRIA\32765 - ALEXANDRIA 2025 STREET PROGRAM\ADD\WG\SHEETS\32765 - ALEXANDRIA 25 STREET PROGRAM.DWG - WALNUT DRAINAGE - 5/12/2025 3:58:55 PM - ROBERT SEITZINGER

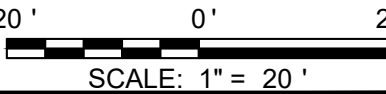


CONSTRUCTION NOTES

- 1 MILL AROUND INLET AND/OR TAPER ASPHALT TO EXITING STORM INLET.
- 2 MATCH EX. PAVEMENT.
- 3 DURING AND/OR AFTER PAVEMENT MILLING, THE ENGINEER SHALL MARK ALL AREAS OF REQUIRED FULL DEPTH PAVEMENT REPAIRS. NO NEW ASPHALT PAVEMENT SHALL BE PLACED UNTIL THE ENGINEER HAS INSPECTED THE STREET FOR FULL DEPTH REPAIRS.
- 4 ADJUST WATER VALVE TO FINISHED GRADE PER NKWD REQUIREMENTS AS NEEDED. THE COST OF ADJUSTMENT SHALL BE INCIDENTAL TO THE OVERALL CONTRACT.
- 5 LIMITS OF CURB REPLACEMENT BE MARKED IN FIELD.
- 6 ROLLED CURB REPLACEMENT
- 7 ADJUST MANHOLE TO GRADE
- 8 REPLACE DRIVEWAY APRON LIMITS TO BE MARKED IN FIELD
- 9 REPLACE DBI

IMPROVEMENT LEGEND

- ASPHALT OVERLAY OF EX CONCRETE  
SEE DETAIL
- ASPHALT RESURFACING (MILL & OVERLAY)  
SEE DETAIL



CITY OF ALEXANDRIA  
2025 STREET PROGRAM  
- CAMPBELL COUNTY, KENTUCKY -

WALNUT PARK DRAINAGE

PROJECT NO.	
32765	
DISCIPLINE	
CIVIL	
SHEET NAME	
----	
SHEET	OF
14	14