

STATE OF OHIO
TIMOTHY R. LANNON
58885
REGISTERED PROFESSIONAL ENGINEER

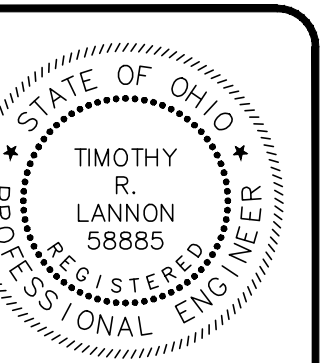
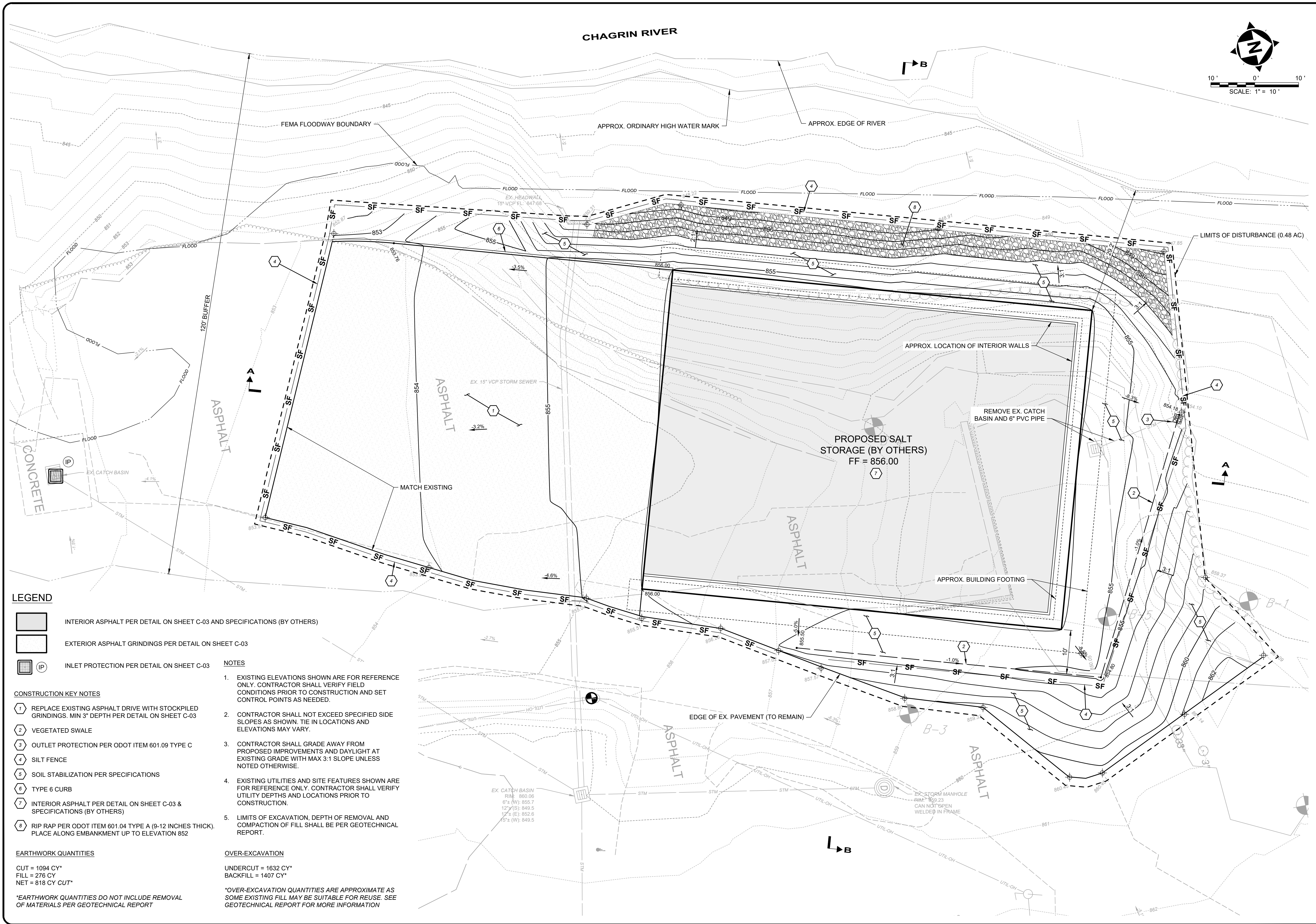
verdantas

ISSUED FOR:	REVIEW	NO	REVISION	DATE
ISSUE DATE:	JUNE 2025			
SCALE:	AS SHOWN			
DESIGNED BY:	PTV			
DRAWN BY:	PTV			
CHECKED BY:	TRL			

SALT STORAGE SITE GRADING
240 SOLON ROAD
- VILLAGE OF CHAGRIN FALLS, OHIO -

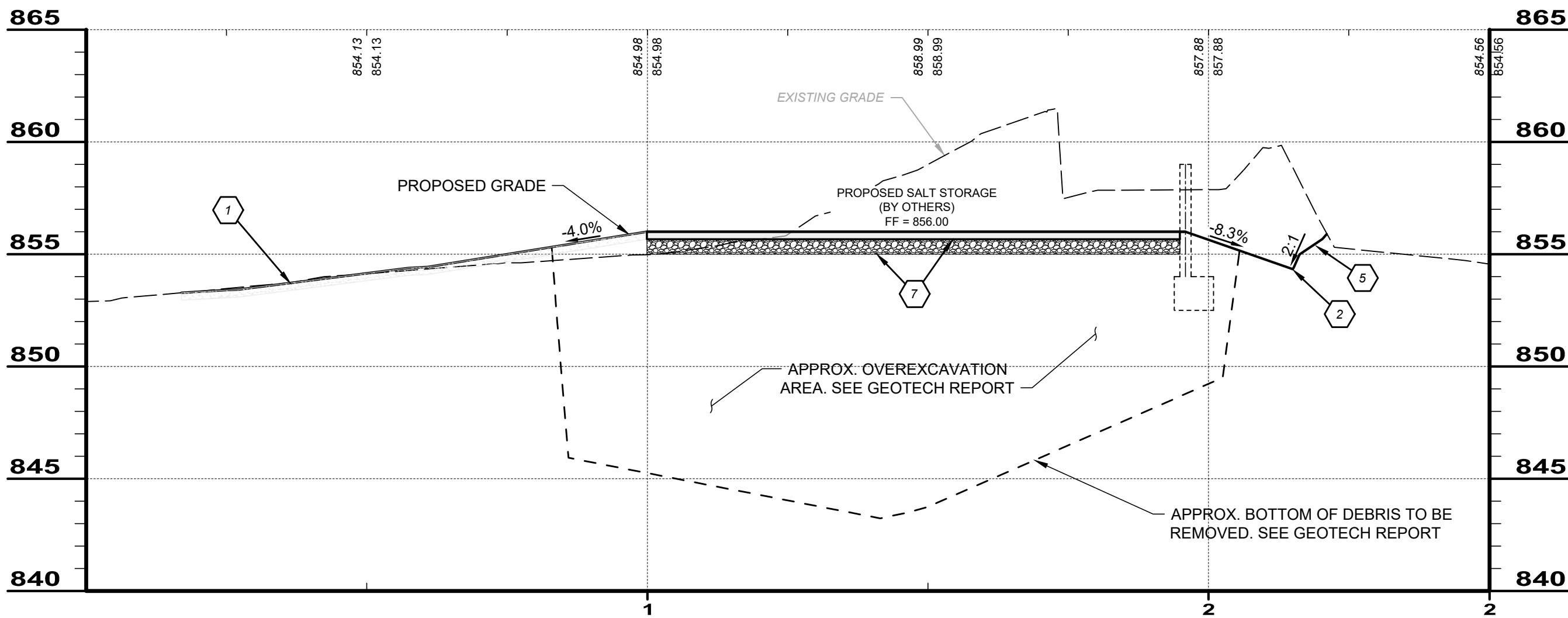
SITE PLAN

PROJECT NO. 32747	
DISCIPLINE CIVIL	
SHEET NAME C-01	
SHEET 1	OF 3

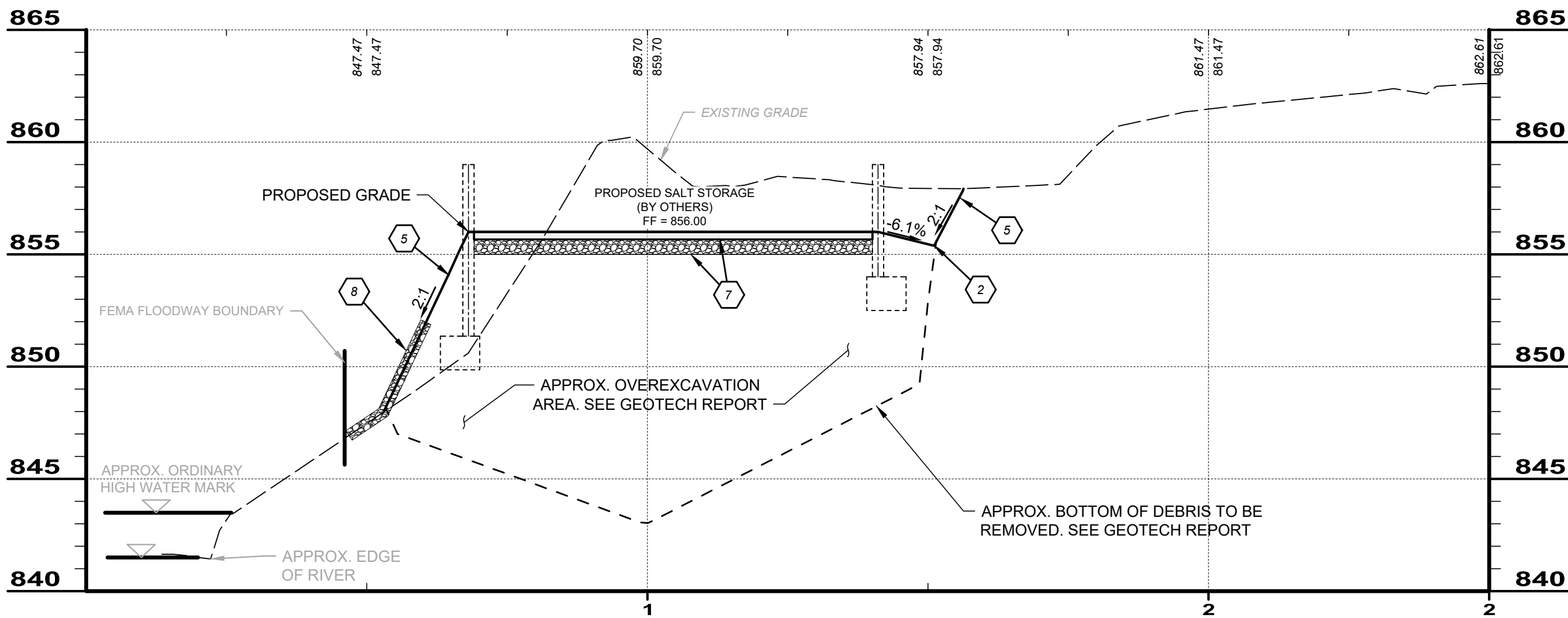


ISSUE DATE:	JUNE 2025
SCALE:	AS SHOWN
DESIGNED BY:	PTV
DRAWN BY:	PTV
CHECKED BY:	TRL

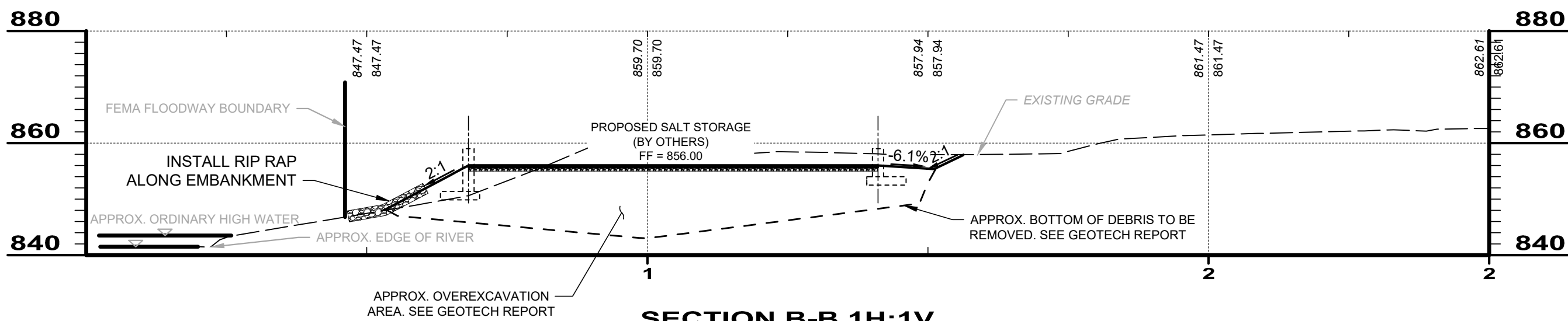
PROJECT NO.	
32747	
DISCIPLINE	
CIVIL	
SHEET NAME	
C-02	
SHEET	OF
2	3



SECTION A-A



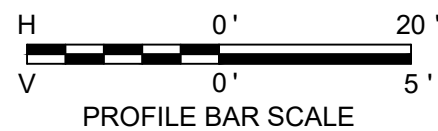
SECTION B-B



SECTION B-B 1H:1V
(SHOWN FOR CLARITY)

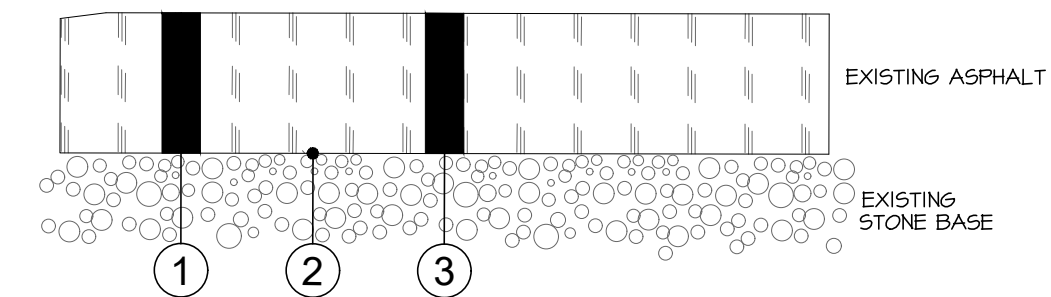
CONSTRUCTION KEY NOTES

- 1 REPLACE EXISTING ASPHALT DRIVE WITH STOCKPILED GRINDINGS, MIN 3" DEPTH PER DETAIL THIS SHEET
- 2 VEGETATED SWALE
- 5 SOIL STABILIZATION PER SPECIFICATIONS
- 7 INTERIOR ASPHALT PER DETAIL THIS SHEET & SPECIFICATIONS (BY OTHERS)
- 8 RIP RAP PER ODOT ITEM 601.04 TYPE A (9-12 INCHES THICK) PLACE ALONG EMBANKMENT UP TO ELEVATION 852



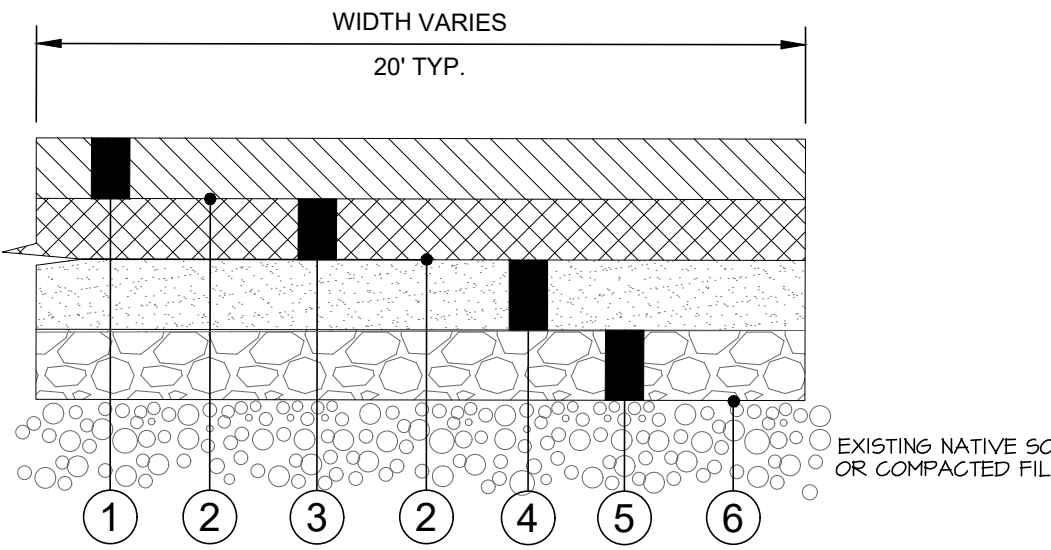
NOTES

1. EXISTING ELEVATIONS SHOWN ARE FOR REFERENCE ONLY. CONTRACTOR SHALL VERIFY FIELD CONDITIONS PRIOR TO CONSTRUCTION AND SET CONTROL POINTS AS NEEDED.
2. CONTRACTOR SHALL NOT EXCEED SPECIFIED SIDE SLOPES AS SHOWN. TIE IN LOCATIONS AND ELEVATIONS MAY VARY.
3. CONTRACTOR SHALL GRADE AWAY FROM PROPOSED IMPROVEMENTS AND DAYLIGHT AT EXISTING GRADE WITH MAX 3:1 SLOPE UNLESS NOTED OTHERWISE.
4. EXISTING UTILITIES AND SITE FEATURES SHOWN ARE FOR REFERENCE ONLY. CONTRACTOR SHALL VERIFY UTILITY DEPTHS AND LOCATIONS PRIOR TO CONSTRUCTION.
5. LIMITS OF EXCAVATION, DEPTH OF REMOVAL AND COMPACTION OF FILL SHALL BE PER GEOTECHNICAL REPORT.



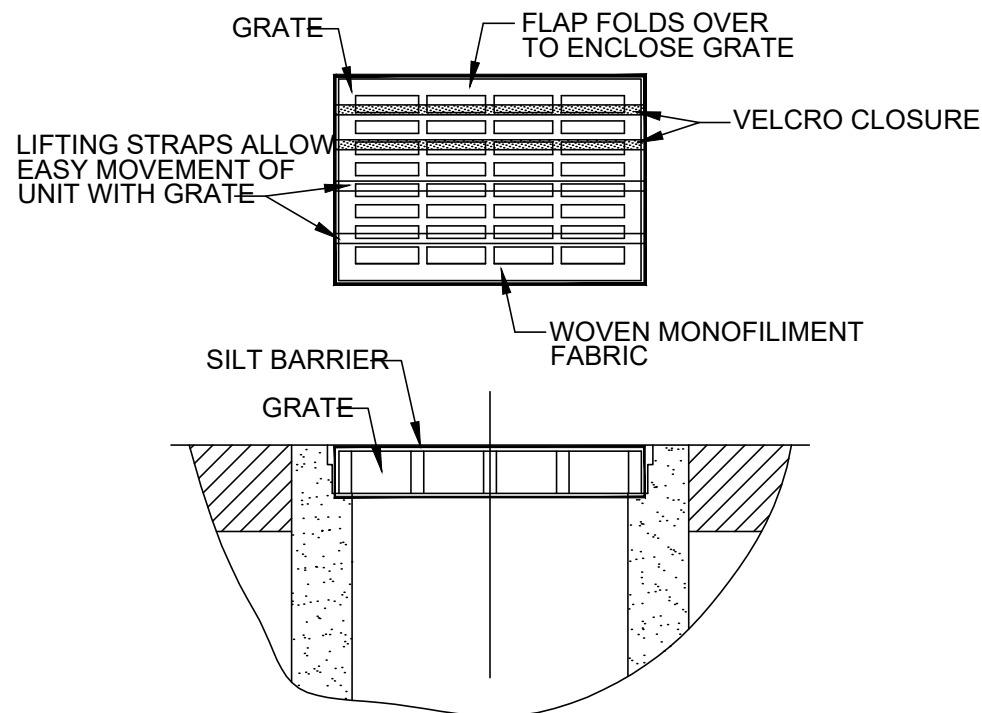
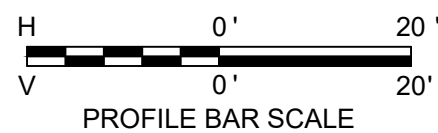
- 1 REMOVE EXISTING PAVEMENT (FULL DEPTH)
- 2 ODOT ITEM 204 - SUBGRADE COMPACTION
- 3 3" MIN COMPACTED ASPHALT GRINDINGS (PROVIDED BY OWNER)

ASPHALT GRINDINGS DETAIL



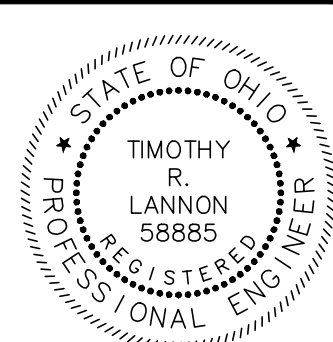
- 1 1.25" ODOT ITEM 441 - ASPHALT SURFACE COURSE, TYPE 1, PG64-22 (0% R.A.P.)
- 2 ODOT ITEM 407 - TACK COAT, TRACKLESS (APPLICATION RATE PER ODOT TABLE 407.06-1)
- 3 1.75" ODOT ITEM 441 - ASPHALT INTERMEDIATE COURSE, TYPE 2, PG64-22 (MAX. 25% R.A.P.)
- 4 6" ODOT ITEM 301 - ASPHALT CONCRETE BASE, PG 64-22
- 5 6" ODOT ITEM 304 - AGGREGATE BASE
- 6 ODOT ITEM 204 - SUBGRADE COMPACTION

ASPHALT PAVEMENT DETAIL (BY OTHERS)



1. GEOTEXTILE SHALL HAVE AN EQUIVALENT OPENING SIZE OF 20-40 SIEVE AND BE RESISTANT TO SUNLIGHT.
2. MAINTENANCE: REMOVE ALL ACCUMULATED SEDIMENT AND DEBRIS FROM SURFACE AND VICINITY OF UNIT AFTER EACH STORM EVENT. REMOVE SEDIMENT THAT HAS ACCUMULATED WITHIN THE CONTAINMENT AREA OF THE SILT BARRIER AS NEEDED.
3. TO INSTALL CATCH BASIN INLET SILT BARRIER: THE EMPTY SILT BARRIER SHOULD BE PLACED OVER THE GRATE AS THE GRATE STANDS ON END. TUCK THE ENCLOSURE FLAP INSIDE TO COMPLETELY ENCLOSE THE GRATE. HOLDING THE LIFTING DEVICES (DO NOT RELY ON LIFTING DEVICES TO SUPPORT THE ENTIRE WEIGHT OF THE GRATE), PLACE THE GRATE INTO ITS FRAME.

INLET PROTECTION DETAIL



verdantas

ISSUED FOR:	REVIEW	NO	REVISION	DATE
ISSUE DATE:	JUNE 2025			
SCALE:	AS SHOWN			
DESIGNED BY:	PTV			
DRAWN BY:	PTV			
CHECKED BY:	TRL			

SALT STORAGE SITE GRADING
240 SOLON ROAD
- VILLAGE OF CHAGRIN FALLS, OHIO -

PROFILES

PROJECT NO.	32747
DISCIPLINE	CIVIL
SHEET NAME	C-03
SHEET	3
OF	3