

Date:	7/31/2025	
City:	Wickliffe	
Street/Location:	Parkwood Drive	
Sewer Class:	Sanitary	
Pipe Size:	10"	
Pipe Type:	VCP	
Point of Entry:	MH 0	
Exit Point:	MH 4	
Direction:	DOWNSTREAM	
Disk#:	VTS 01 1.VOB	

<u>Footage(LF)</u>	<u>Observations</u>	<u>Notes</u>	<u>Recommendation</u>
0	Video MH 0 - 680 Woodrow Plan MH 6		
11	CONNECTION, RIGHT	FACTORY TEE,3 O'CLOCK	
20	Begin Belly		
55	End Belly - 1/3 deep at midpoint		
99	CONNECTION, RIGHT	FACTORY TEE,3 O'CLOCK	
174	CONNECTION, RIGHT	FACTORY TEE,3 O'CLOCK	
237	CONNECTION, RIGHT	FACTORY TEE,3 O'CLOCK	
307	Video MH 1 - 660 Sterling Plan MH 3		
0	Video MH 1 - 660 Sterling Plan MH 3		
68	CONNECTION, RIGHT	FACTORY TEE,3 O'CLOCK	
81	Video MH 2 - 29474 Parkwood Plan MH 4		
0	Video MH 2 - 29474 Parkwood Plan MH 4		
19	CONNECTION, LEFT	FACTORY TEE,9 O'CLOCK	
55	CONNECTION, RIGHT	FACTORY TEE,3 O'CLOCK	
65	CONNECTION, LEFT	FACTORY TEE,9 O'CLOCK	
107	CONNECTION, RIGHT	FACTORY TEE,3 O'CLOCK	
122	CONNECTION, LEFT		
152	CONNECTION, RIGHT	structural damage in Lateral at wye connection	LATERAL POINT REPAIR - See Photos 1 and 2
164	CONNECTION, LEFT	FACTORY TEE,9 O'CLOCK	
206	CONNECTION, RIGHT	pipe separation in lateral at Wye	
212	CONNECTION, LEFT	FACTORY TEE,9 O'CLOCK	
261	CONNECTION, RIGHT	FACTORY TEE,3 O'CLOCK	
280	Video MH 3 - Bryn Mawr Plan MH 3		
0	Video MH 3 - Bryn Mawr Plan MH 3		
30	CONNECTION, RIGHT	FACTORY TEE,3 O'CLOCK	
35	Under Water		
59	CONNECTION, LEFT	FACTORY TEE,9 O'CLOCK	
95	CONNECTION, LEFT	TAP BREAK-IN,3 O'CLOCK	Point Repair with Lateral - See Photos 3 and 4
95	begin Longitudinal crack		
103	End Long crack		
114	CONNECTION, RIGHT	FACTORY TEE,3 O'CLOCK	
118	Patch at 11:30		
120	Video MH 4 - 29356 Parkwood Plan MH 2		

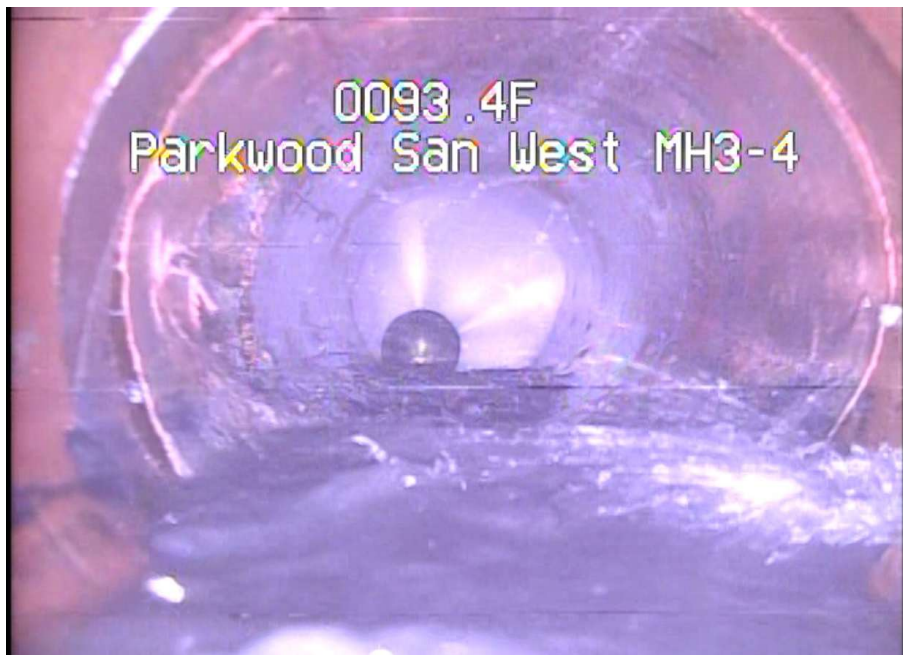


Photo 1. Lateral Point Repair



Photo 2. Lateral Point Repair

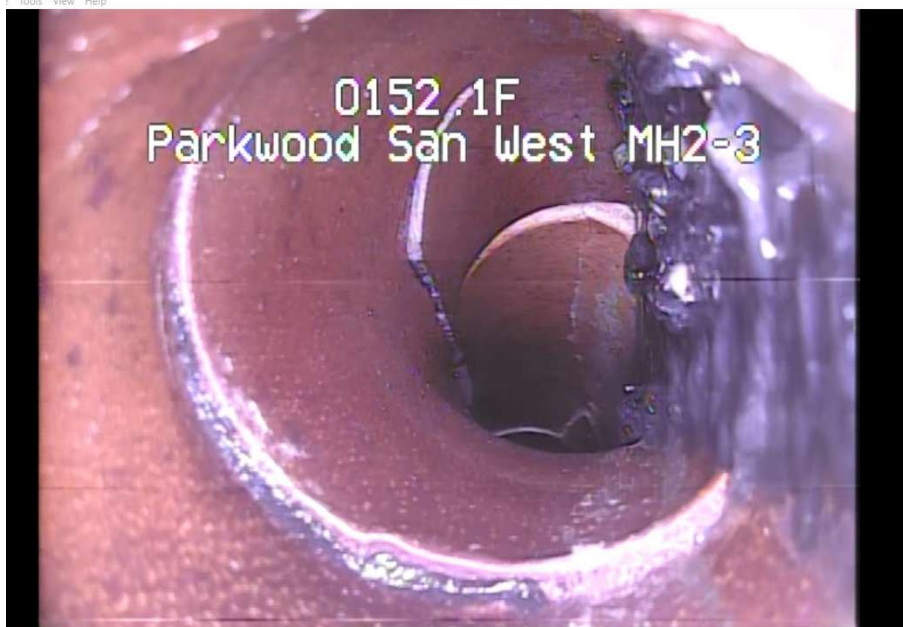


Photo 3. Point Repair (Including Lateral)

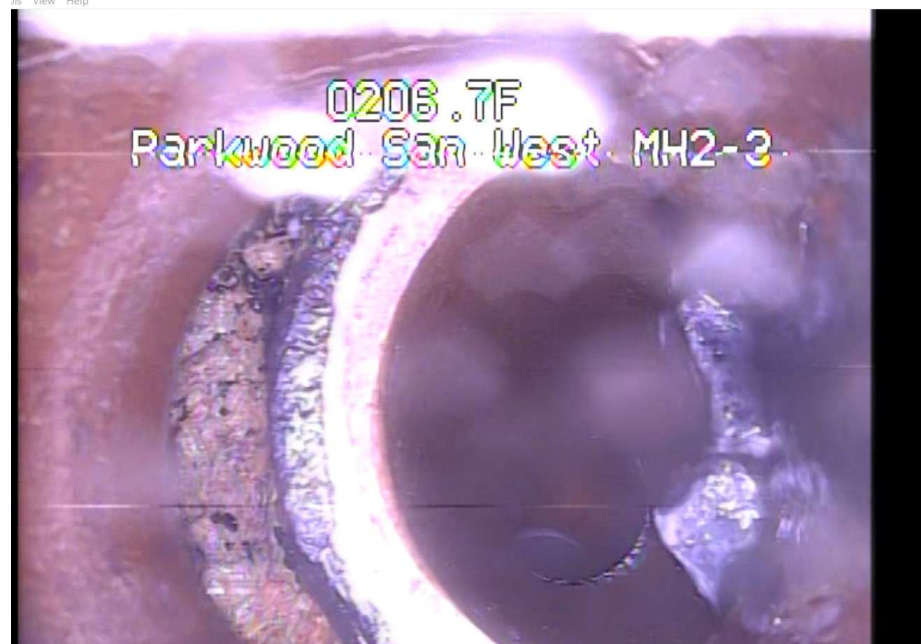


Photo 4. Point Repair (Including Lateral)