

CITY OF CHEVIOT OFFICIALS

MAYOR

SAMUEL D. KELLER

SAFETY SERVICES DIRECTOR

STEVE BRAUN

CITY COUNCIL MEMBERS

KERRY SMYTH

JENNY M. EILERMANN

TROY D. BORGMANN

JOHN C. HARDING

STEFANIE HAWK

LINDSAY KEEBLE

AMY RICHTER

BRIAN SMYTH

DAVID W. VOSS

LAW DIRECTOR

KIMBERLEE ERDMAN-ROHR

PUBLIC WORKS SUPERINTENDANT

BRENT CRAIG

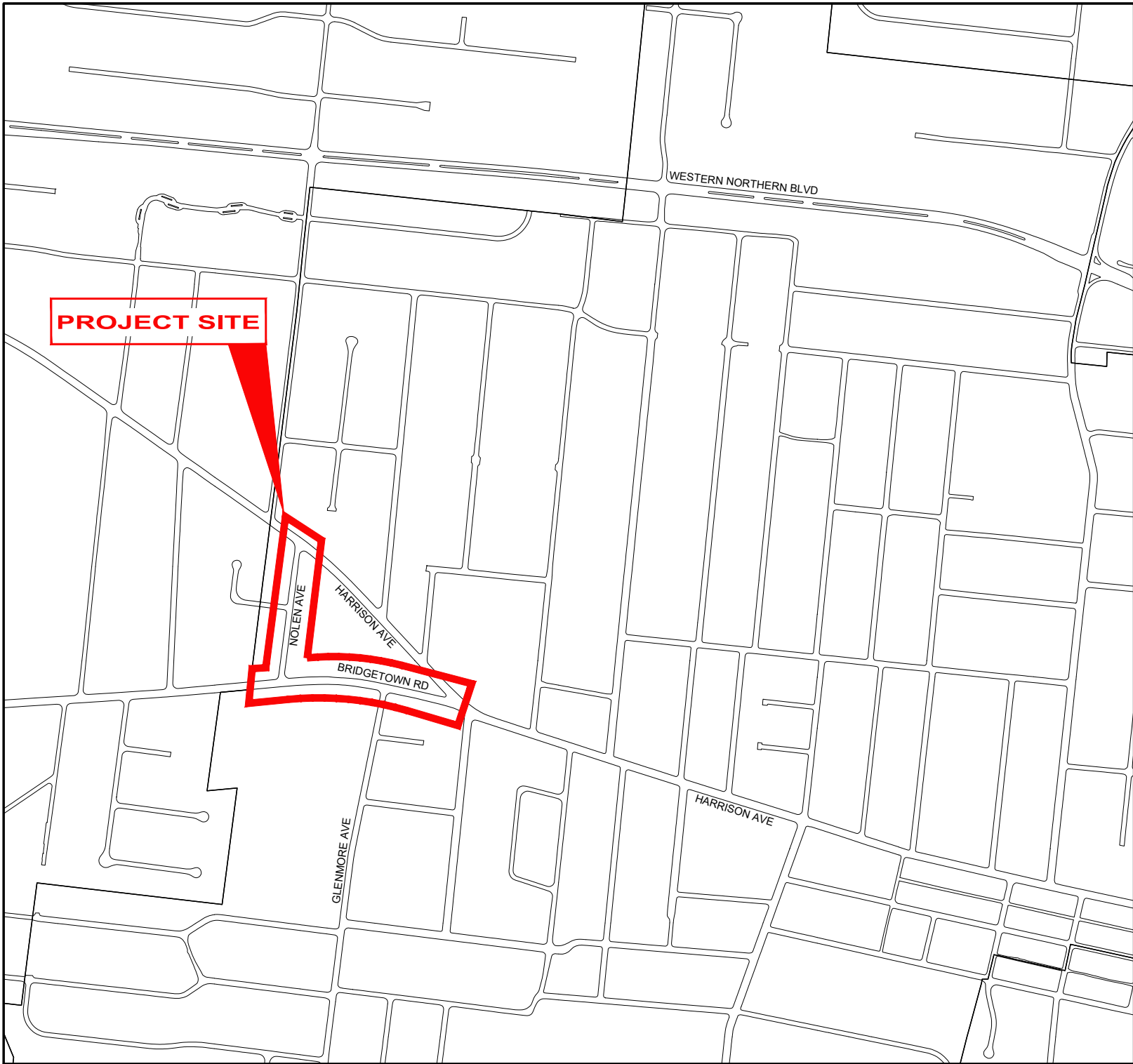
CITY OF CHEVIOT

HAMILTON COUNTY, OHIO

BRIDGETOWN ROAD AND

NOLAN AVENUE IMPROVEMENTS

32088



VICINITY MAP

O.D.O.T. SPECIFICATIONS

THE LATEST STANDARD SPECIFICATIONS OF THE OHIO DEPARTMENT OF TRANSPORTATION , INCLUDING CHANGES AND SUPPLEMENTAL SPECIFICATIONS THERETO AND CITY OF CHEVIOT ENGINEERING DEPARTMENT REQUIREMENTS SHALL GOVERN THIS IMPROVEMENT.

SOURCE OF BOUNDARY INFORMATION

THE BOUNDARY INFORMATION SHOWN ON THESE PLANS IS BASED UPON HAMILTON COUNTY G.I.S. MAPPING AND DOES NOT REPRESENT AN ACTUAL FIELD BOUNDARY SURVEY BY CT CONSULTANTS, INC.

SHEET INDEX		
NO	DESC	SHEET NAME
1	TTL	TITLE SHEET
2	NOT	NOTES
3	DET1	DETAILS
4	DET2	DETAILS 2
5	DET3	DETAILS 3
6	C1	PLAN 1 - BRIDGETOWN RD
7	C2	PLAN 2 - BRIDGETOWN RD
8	C3	PLAN 3 - NOLAN AVE
9	UTL1	EX. UG CBT-ALTAFIBER MAP
10	PM1	PAVEMENT MARKINGS 1
11	PM2	PAVEMENT MARKINGS 2
12	PM3	PAVEMENT MARKINGS 3

SHAWN RIGGS

PE84714

VERDANTAS

BRIDGETOWN ROAD AND NOLAN AVENUE IMPROVEMENTS

CITY OF CHEVIOT

HAMILTON COUNTY, OHIO

TITLE SHEET

PROJECT NO.

32088

DISCIPLINE

CIVIL

SHEET NAME

TTL

SHEET

1

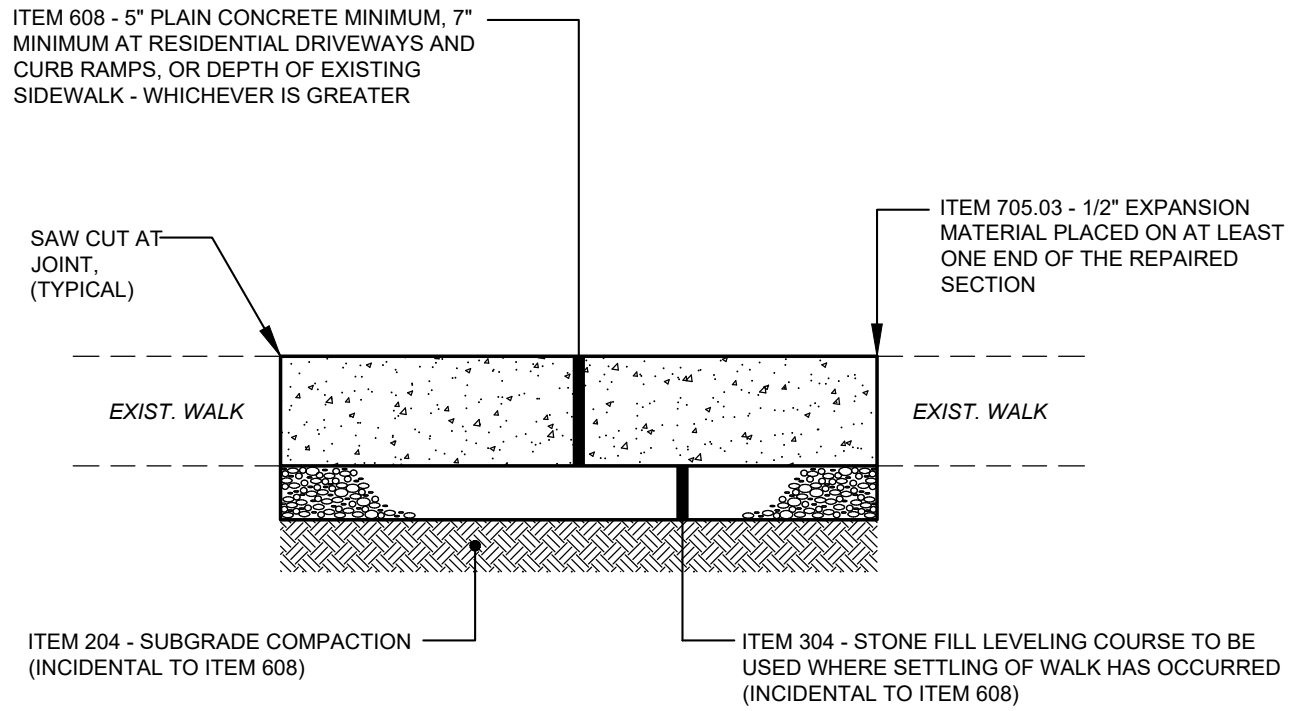
OF

12





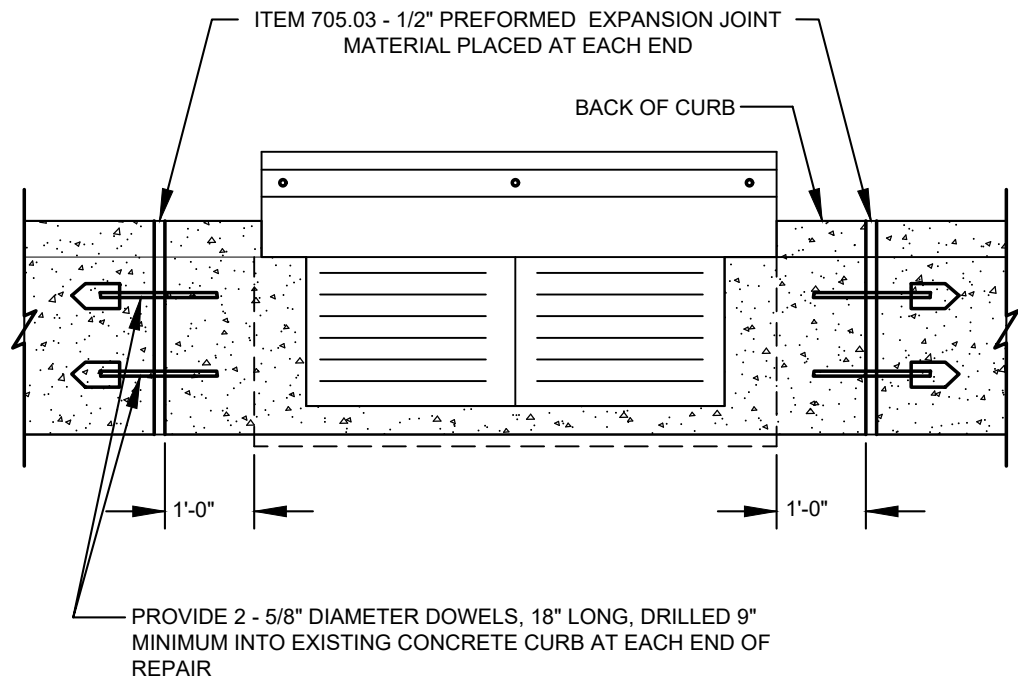




**ITEM 608 - SIDEWALK REPLACEMENT**

**NOTES:**

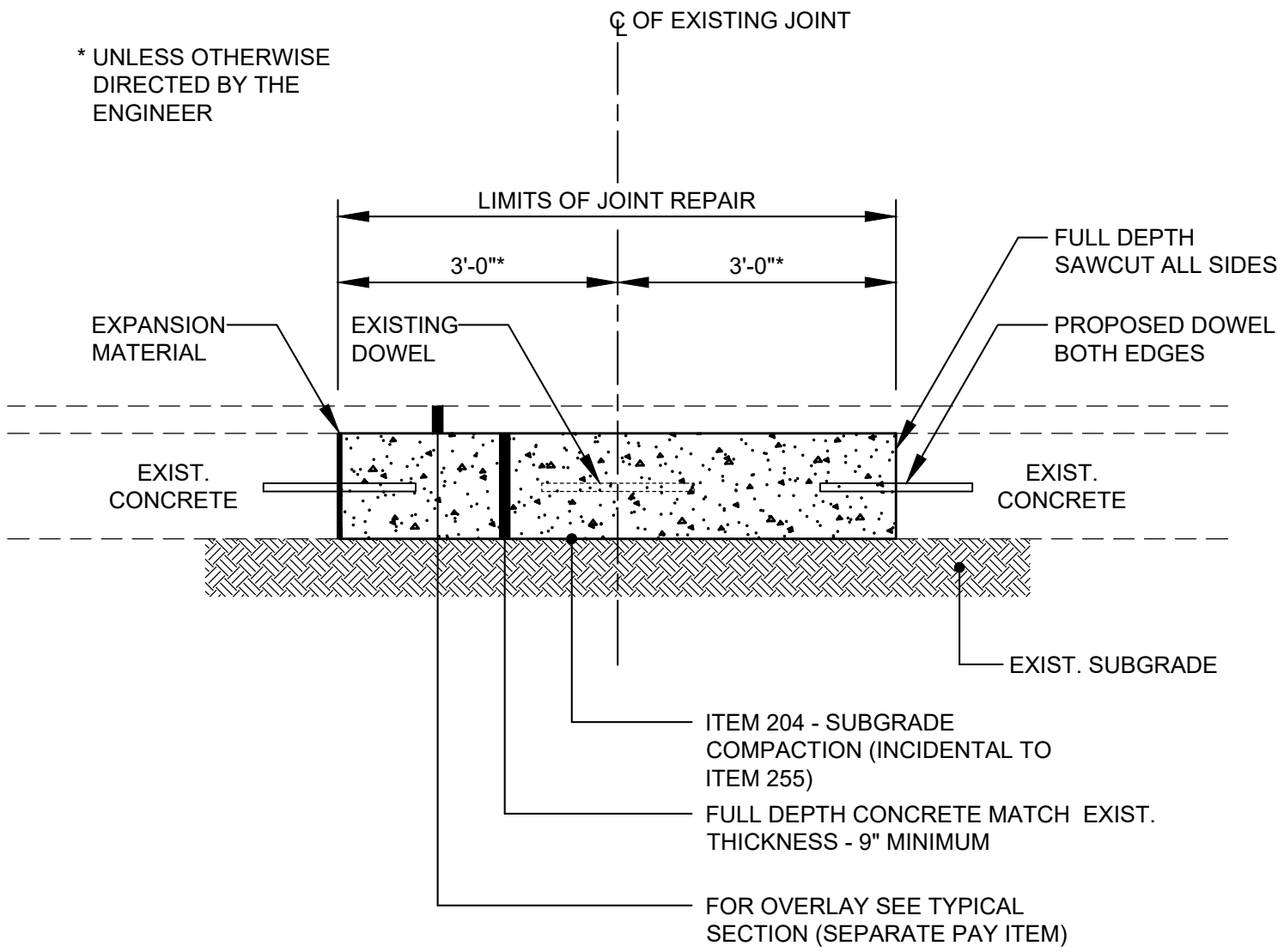
- 1.) THE CITY SHALL MARK IN THE FIELD THE WALK TO BE REPLACED. REPLACEMENT WALK SHALL MATCH THE LINE AND GRADE OF THE EXISTING WALK AND THE SAME JOINT PATTERN SHALL BE MAINTAINED. ITEM 705.03 - 1/2" PREFORMED EXPANSION JOINT MATERIAL SHALL BE PLACED ON AT LEAST ONE END OF THE REPAIRED AREA. ALL REPAIRS ARE TO BE MADE TO THE NEAREST JOINT. ANY DAMAGE TO ADJACENT WALK OR DRIVEWAY BY THE CONTRACTOR SHALL BE REPAIRED AND THE COST SHALL BE INCURRED BY THE CONTRACTOR.
- 2.) THE FINISH APPLIED TO THE CONCRETE WALK SHALL BE CONSISTENT WITH THE EXISTING WALK IT IS TO MATCH AND BE APPROVED BY THE CITY. ALL JOINTS AND OUTSIDE EDGES OF THE WALK SHALL BE TOOLED WITH AN EDGER OR JOINT TOOL AFTER BROOMING OR HAND FINISHING OF THE FINAL SURFACE.
- 3.) THE REPLACEMENT SIDEWALK SHALL BE A MINIMUM THICKNESS OF 7" AT RESIDENTIAL APRONS.
- 4.) ALL DISTURBED YARD AREAS SHALL BE RESTORED TO GRADE, SEEDED, AND MULCHED BEFORE THE WORK IS APPROVED FOR PAYMENT AND SHALL BE INCIDENTAL TO ITEM 608.



**ITEM 609 - VERTICAL CURB REPLACEMENT ADJACENT TO CB**

**NOTES:**

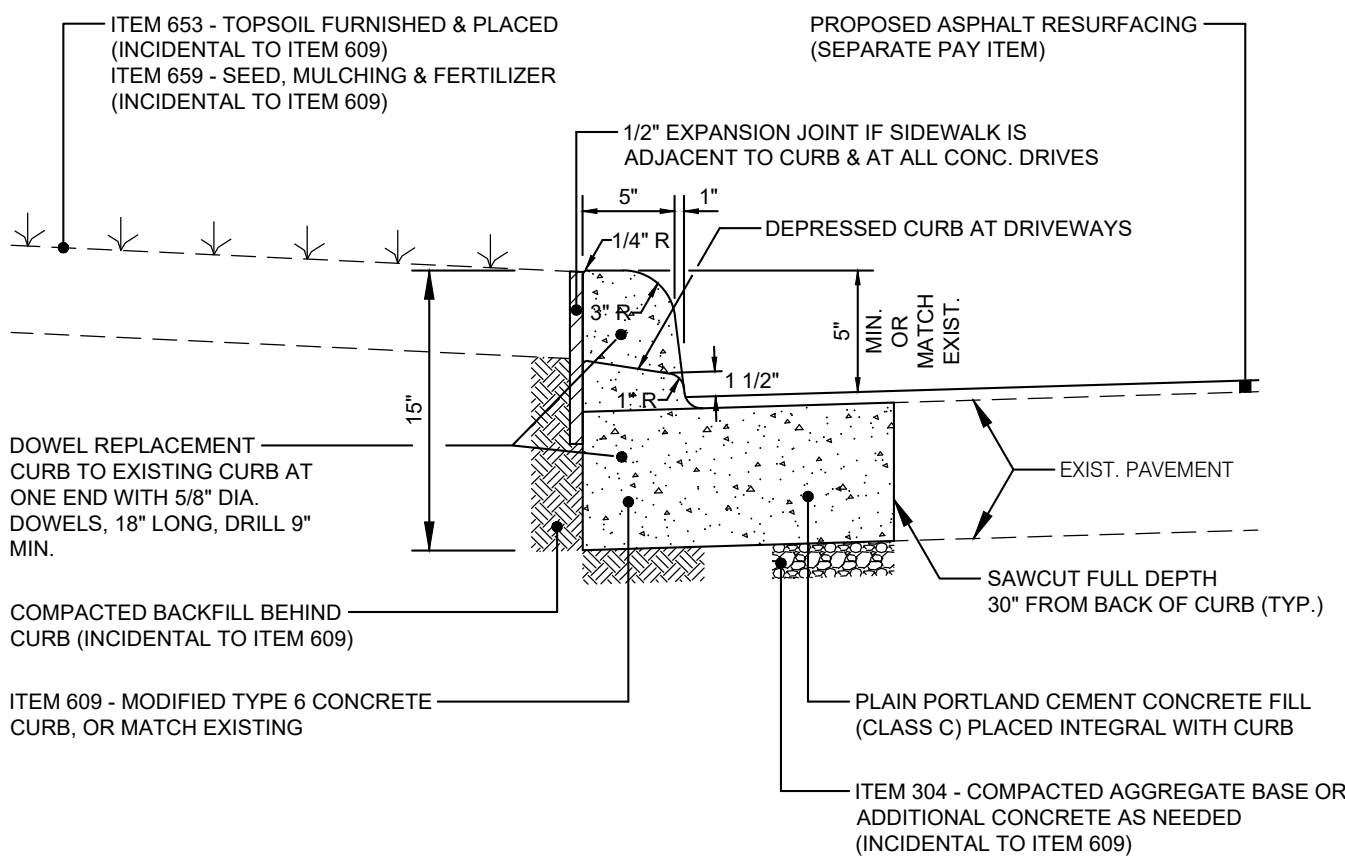
- 1.) SEE ODOT STANDARD DRAWINGS CB-3 & CB-3A



**NOTES:**

- 1.) USE 304 COMPACTED AGGREGATE BASE TO FILL VOIDS AS DIRECTED BY ENGINEER. ITEM 304 SHALL BE INCIDENTAL TO ITEM 255.
- 2.) SEE ODOT STANDARD DRAWING BP-2.5.

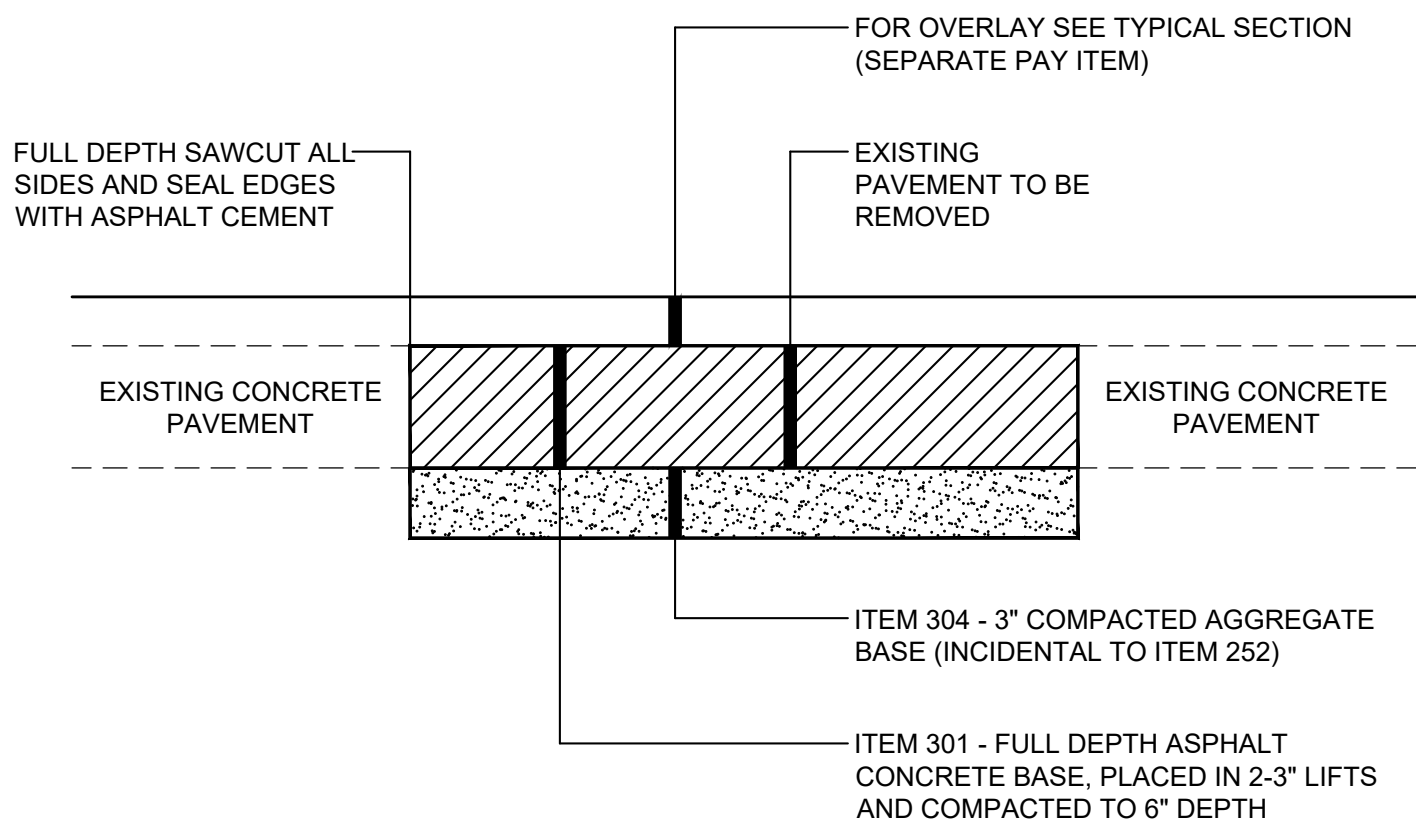
**ITEM 255 - FULL DEPTH PAVEMENT REMOVAL AND RIGID REPLACEMENT DETAIL**  
NTS



**ITEM 609 - CURB, MISC.: MODIFIED TYPE 6 CONCRETE CURB REPLACEMENT**

**NOTES:**

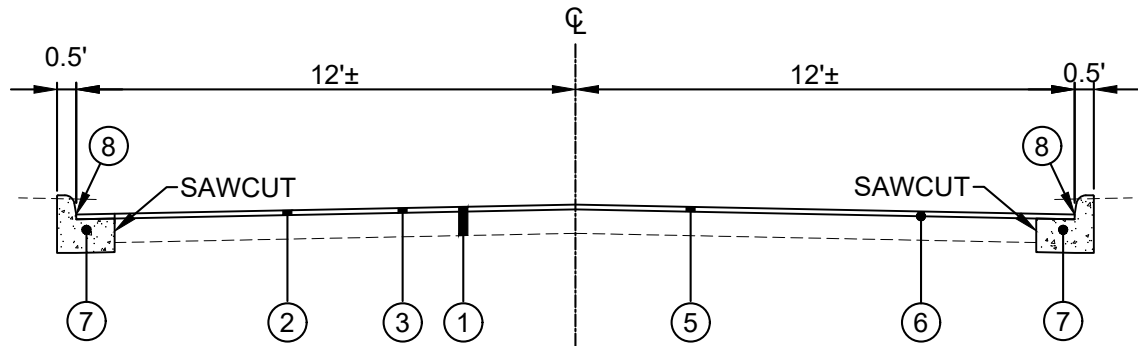
- 1.) CONTRACTOR SHALL FILL BEHIND CURB TO TOP OF CURB WITH TOPSOIL AND RESTORE YARD WITH TOPSOIL AND/OR SEEDING AND MULCHING WHICH SHALL BE INCIDENTAL TO ITEM 609.
- 2.) MAXIMUM SPACING OF EXPANSION JOINTS IS FORTY (40) FEET AND THE MAXIMUM SPACING FOR CONTRACTION JOINTS IS TEN (10) FEET.
- 3.) CONCRETE SHALL BE 4000 PSI AT 28 DAYS WITH 5% MIN. TO 8% MAX. ENTRAINED AIR.
- 4.) THE MIN. CURB REPLACEMENT SHALL BE 3'-0". EXPANSION MATERIAL AND DOWELS SHALL BE PLACED ON AT LEAST ONE END OF THE REPAIRED SECTION.
- 5.) DOWELING WILL BE REQUIRED AT EXPANSION JOINTS IN THE NEW CURB. TWO DOWELS SHALL BE PLACED PER DETAIL. EXPANSION JOINTS SHALL BE PLACED:
  - A.) AT A MAXIMUM SPACING OF 40' (IF HAND FORMED).
  - B.) ONE FOOT ON EACH SIDE OF CATCH BASIN PER ODOT STANDARD DRAWINGS.
  - C.) ALL CURB RADII RETURNS AND AT ALL STOP IN POURS.
  - D.) WHERE THE NEW CURB MEETS THE EXISTING CURB.
- 7.) THE DIMENSIONS ABOVE MAY BE MODIFIED BY THE ENGINEER IN THE FIELD TO MATCH THE DIMENSIONS OF THE VARIOUS EXISTING CURBS TO BE REMOVED.
- 8.) DEPRESSED CURB AT DRIVEWAYS. HEIGHT OF CURB TO BE 2" AT BACK OF CURB TO 1 1/2" AT FACE OF CURB ABOVE NEW SURFACE COURSE.
- 9.) REMOVAL AND DISPOSAL OF EXISTING CURB SHALL BE INCIDENTAL TO THIS ITEM.



**ITEM 252 - FULL DEPTH RIGID PAVEMENT REMOVAL AND FLEXIBLE REPLACEMENT DETAIL**  
NTS

ISSUED FOR:	BID	NO	REVISION	DATE
ISSUE DATE:	8/4/2025			
SCALE:	PMAD			
DESIGNED BY:	PMAD			
DRAWN BY:	PMAD			
CHECKED BY:	SRIG			

PROJECT NO.	
32088	
DISCIPLINE	
CIVIL	
SHEET NAME	
DET	
SHEET	OF
3	12

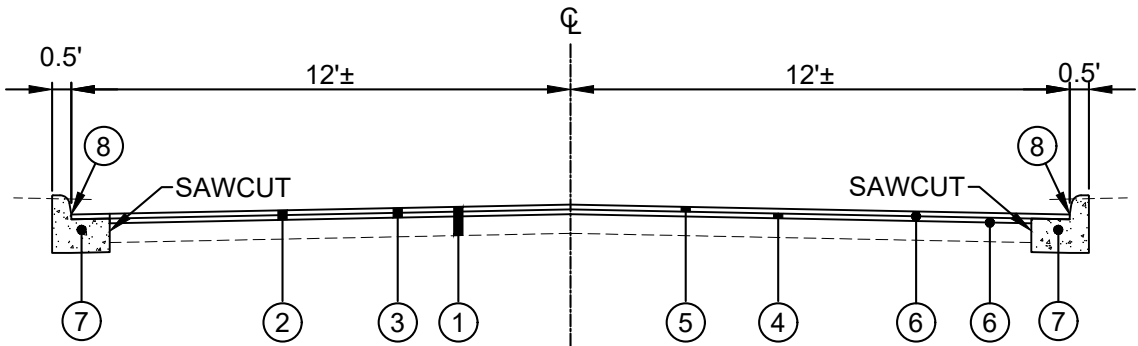


**LEGEND**

- ① EXISTING PAVEMENT
- ② EXISTING ASPHALT SURFACE COURSE
- ③ ITEM 254 - PAVEMENT PLANING, ASPHALT CONCRETE, (1-1/2")
- ④ NOT USED
- ⑤ ITEM 441 - ASPHALT CONCRETE SURFACE COURSE, TYPE 1, (448), PG64-22 , FIBER REINFORCED (1 1/2")
- ⑥ ITEM 407 - TRACKLESS TACK COAT AT 0.10 GAL./S.Y.
- ⑦ ITEM 609 - CURB, MISC.: MODIFIED TYPE 6 CONCRETE CURB REPLACEMENT (SPOT REPLACE)
- ⑧ 3" WIDE SEAL OF ASPHALT BINDER WHERE ASPHALT MEETS CURB FOLLOWING THE PLACEMENT OF ITEM 448 SURFACE COURSE. (INCIDENTAL TO ITEM 441)

**NOLEN AVENUE - PAVEMENT  
MILL AND OVERLAY**

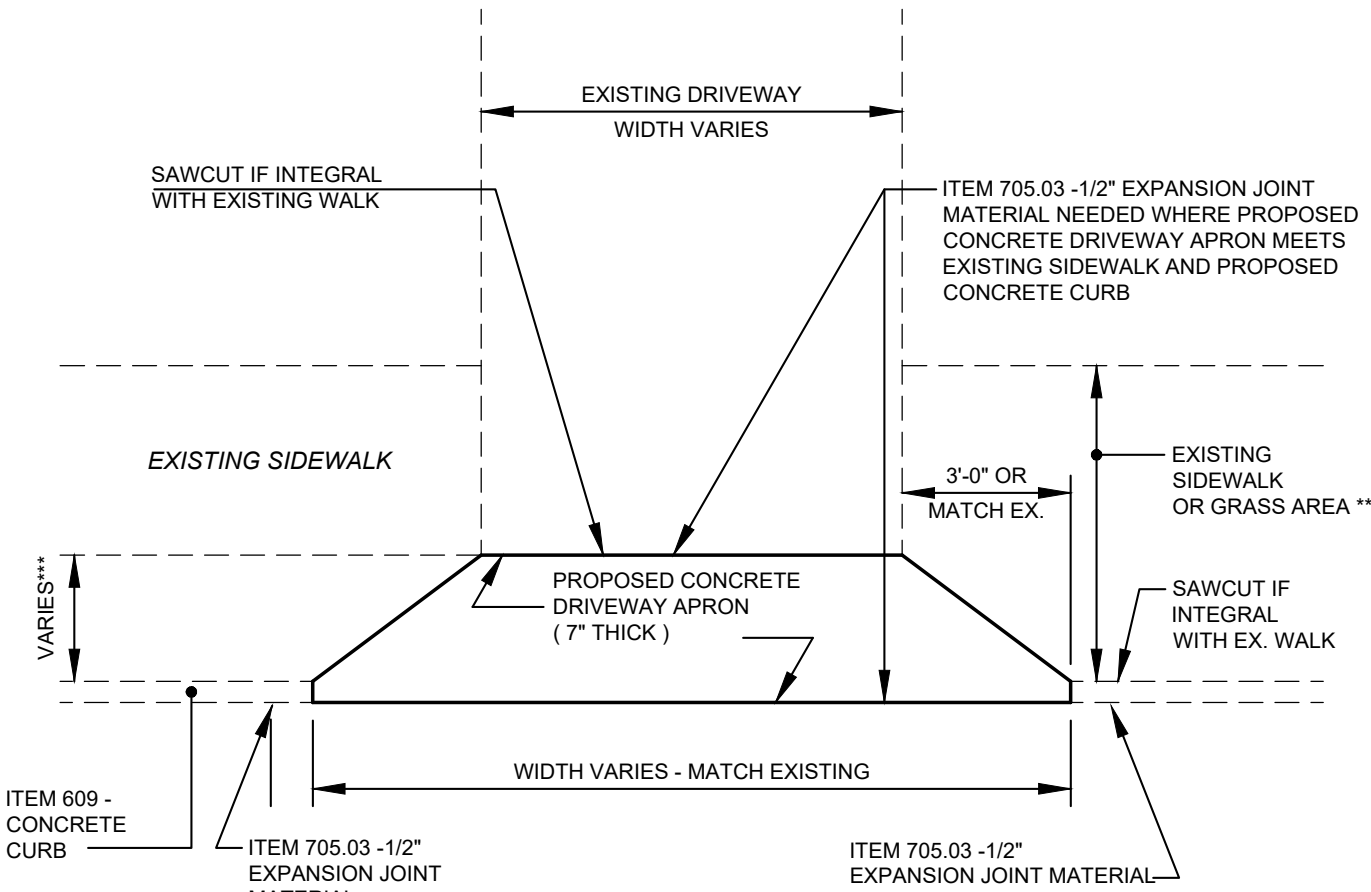
\*NOTE - PROFILE AND ALIGNMENT - PLACE THE PROPOSED PAVEMENT TO FOLLOW THE ALIGNMENT AND PROFILE OF THE EXISTING PAVEMENT



**LEGEND**

- ① EXISTING PAVEMENT
- ② EXISTING ASPHALT PAVEMENT
- ③ ITEM 254 - PAVEMENT PLANING, ASPHALT CONCRETE, (3")
- ④ ITEM 441 - ASPHALT CONCRETE LEVELING COURSE, TYPE 1, PG 64-22 (448) (1-1/2")
- ⑤ ITEM 441 - ASPHALT CONCRETE SURFACE COURSE, TYPE 1, (448), PG64-22 , FIBER REINFORCED (1 1/2")
- ⑥ ITEM 407 - TRACKLESS TACK COAT AT 0.10 GAL./S.Y.
- ⑦ ITEM 609 - CURB, MISC.: MODIFIED TYPE 6 CONCRETE CURB REPLACEMENT (SPOT REPLACE)
- ⑧ 3" WIDE SEAL OF ASPHALT BINDER WHERE ASPHALT MEETS CURB FOLLOWING THE PLACEMENT OF ITEM 448 SURFACE COURSE. (INCIDENTAL TO ITEM 441)

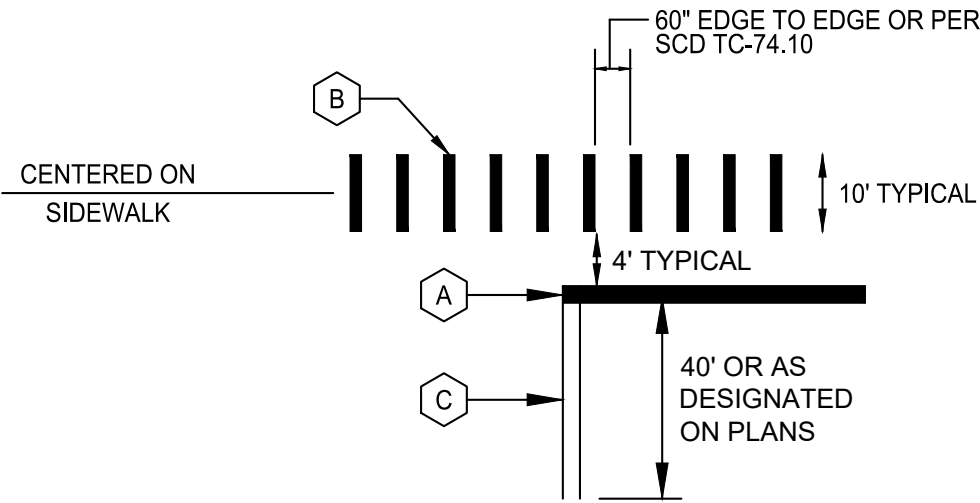
**BRIDGETOWN ROAD -  
PAVEMENT MILL AND  
OVERLAY**



**ITEM 452, NON-REINFORCED CONCRETE PAVEMENT,  
MISC.: 7" PLAIN PORTLAND CEMENT CONCRETE  
DRIVEWAY REMOVAL & REPLACEMENT**

\*\* WHERE SIDEWALK ABUTS CURB, EXTENT OF WALK REMOVAL AND REPLACEMENT TO BE FIELD DETERMINED.

\*\*\* 5' WHERE GRASS STRIP IS GREATER THAN 5' IN WIDTH

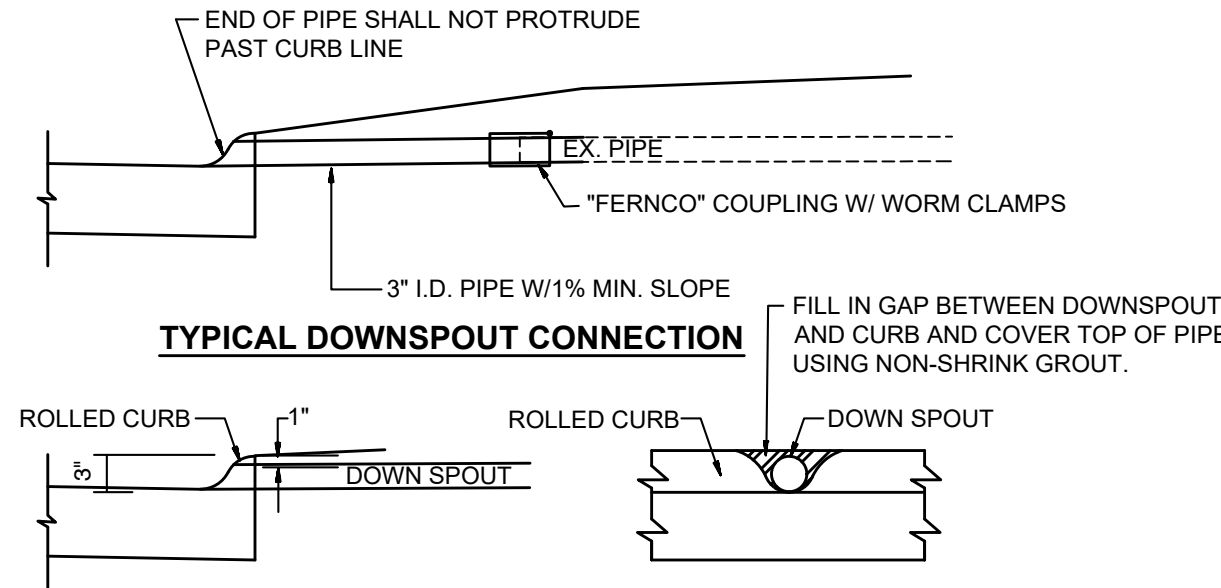


**LEGEND**

- A ITEM 644 - 24" STOP LINE
- B ITEM 644 - CROSSWALK LINE, 24"
- C ITEM 644 - 4" SOLID DOUBLE YELLOW CENTERLINE

**ITEM 644 - PAVEMENT MARKING DETAIL**

N.T.S.



**TYPICAL DOWNSPOUT CONNECTION**

FILL IN GAP BETWEEN DOWNSPOUT AND CURB AND COVER TOP OF PIPE USING NON-SHRINK GROUT.

NOTES: CONDUIT MATERIAL SHALL BE CAST IRON. SIZE TO MATCH EXISTING DOWNSPOUT.

DOWNSPOUT LEADER IS TO DRAIN ONLY DOWNSPOUTS, AND SHALL NOT BE CONNECTED TO ANY UNDERGROUND WATER SOURCE.

**ITEM 611, DOWNSPOUT CONDUIT, MISC : PVC SCHEDULE 40 PIPE, 3"**  
N.T.S.

verdantas

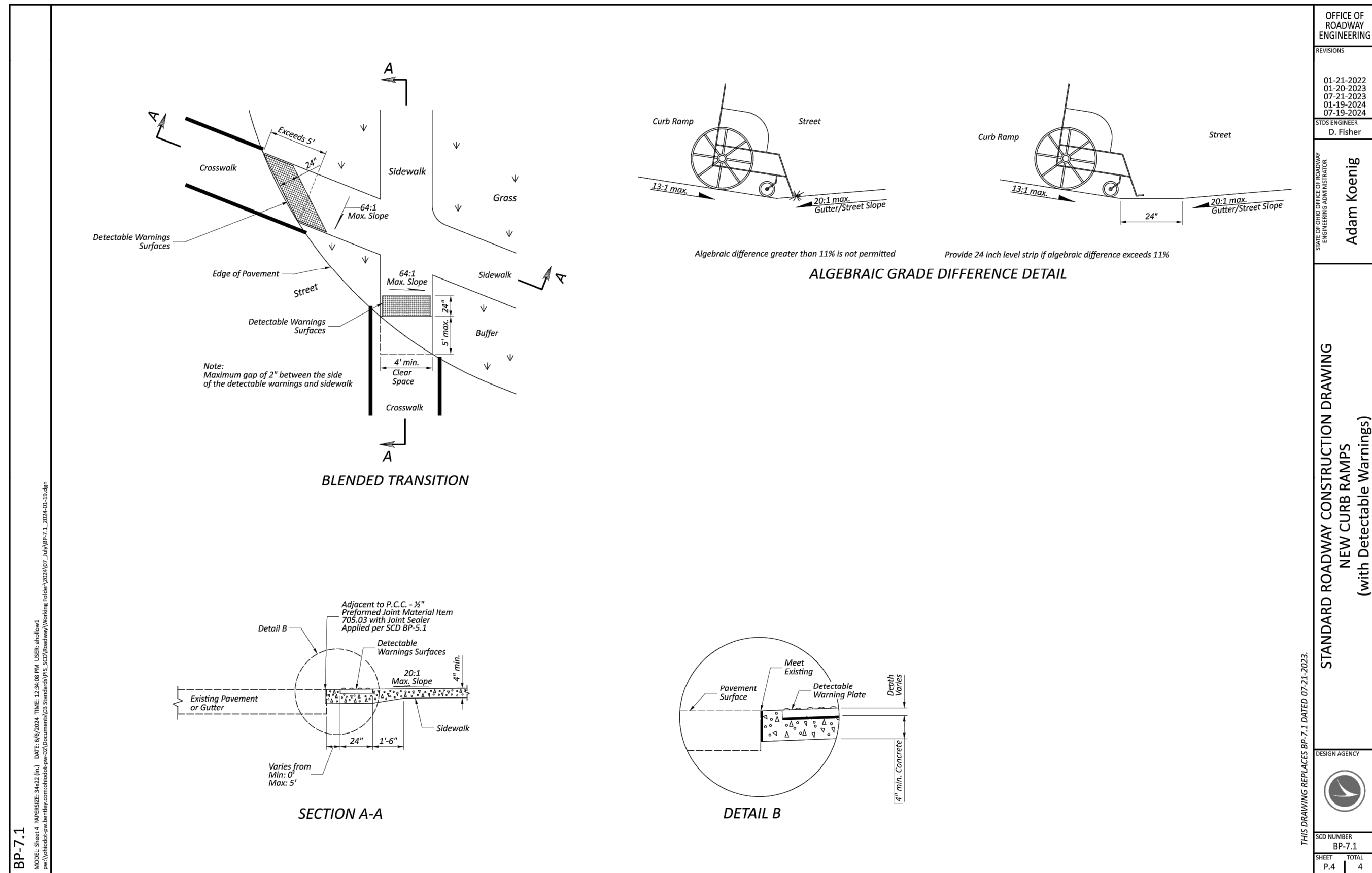
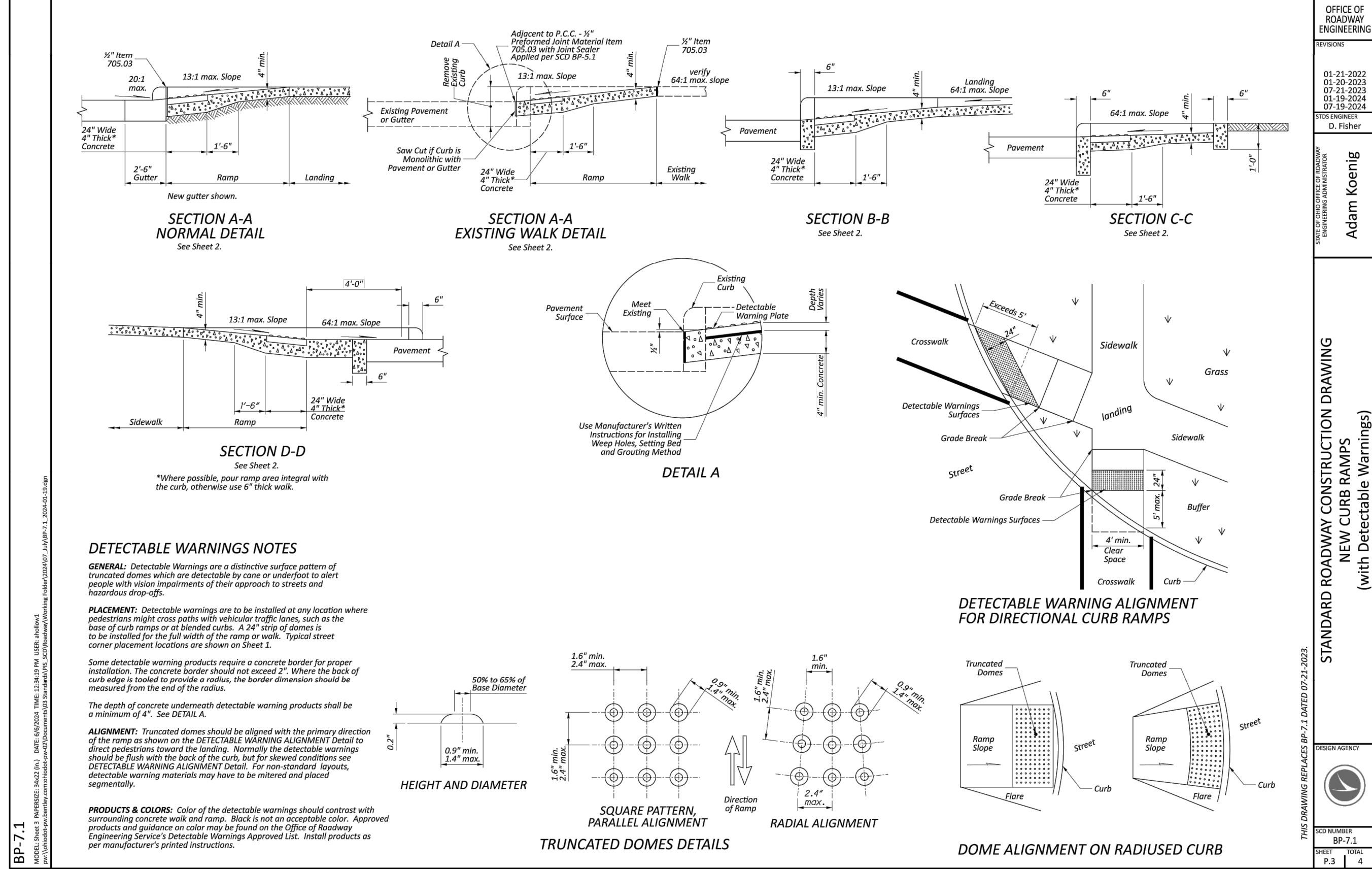
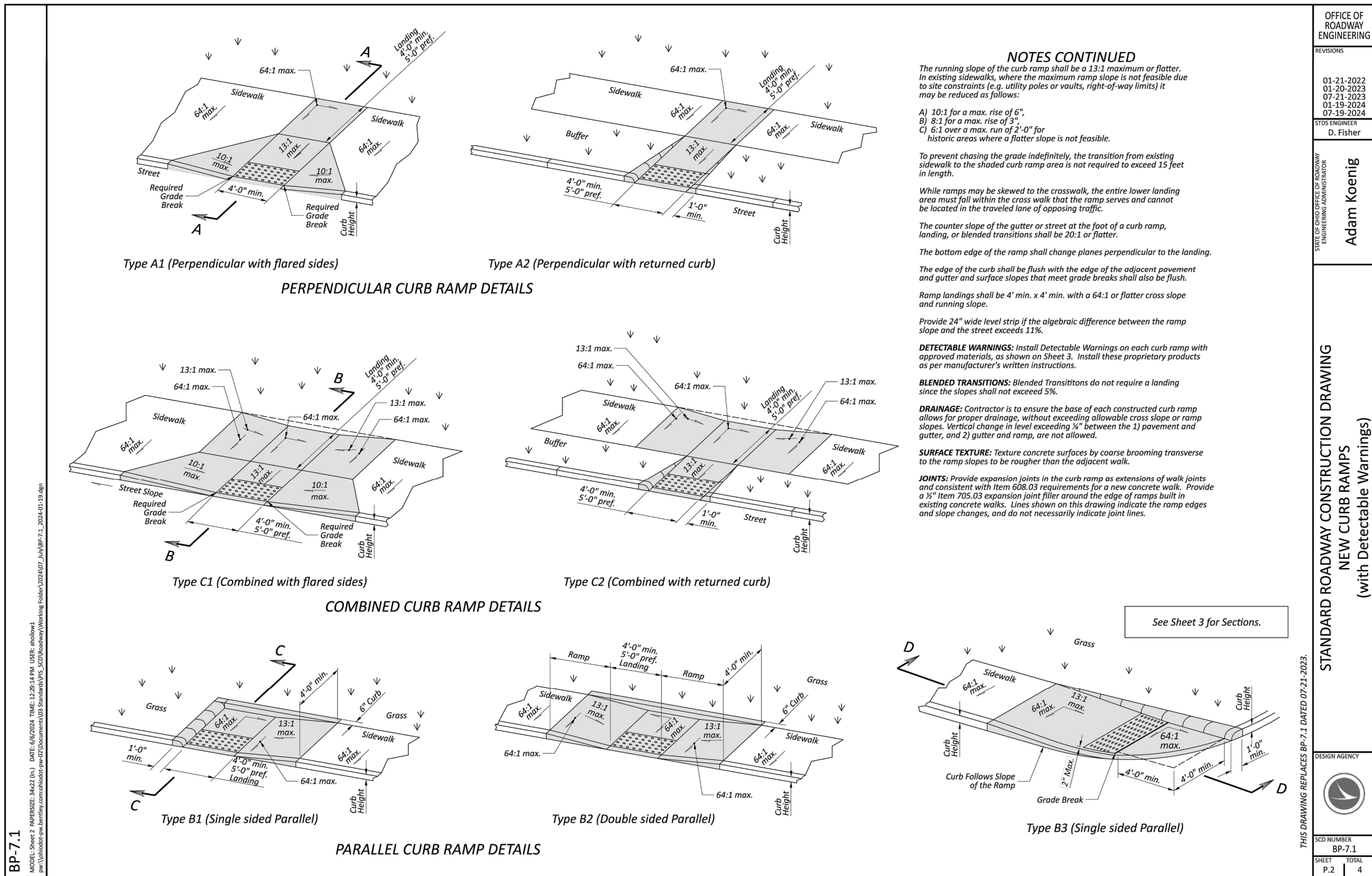
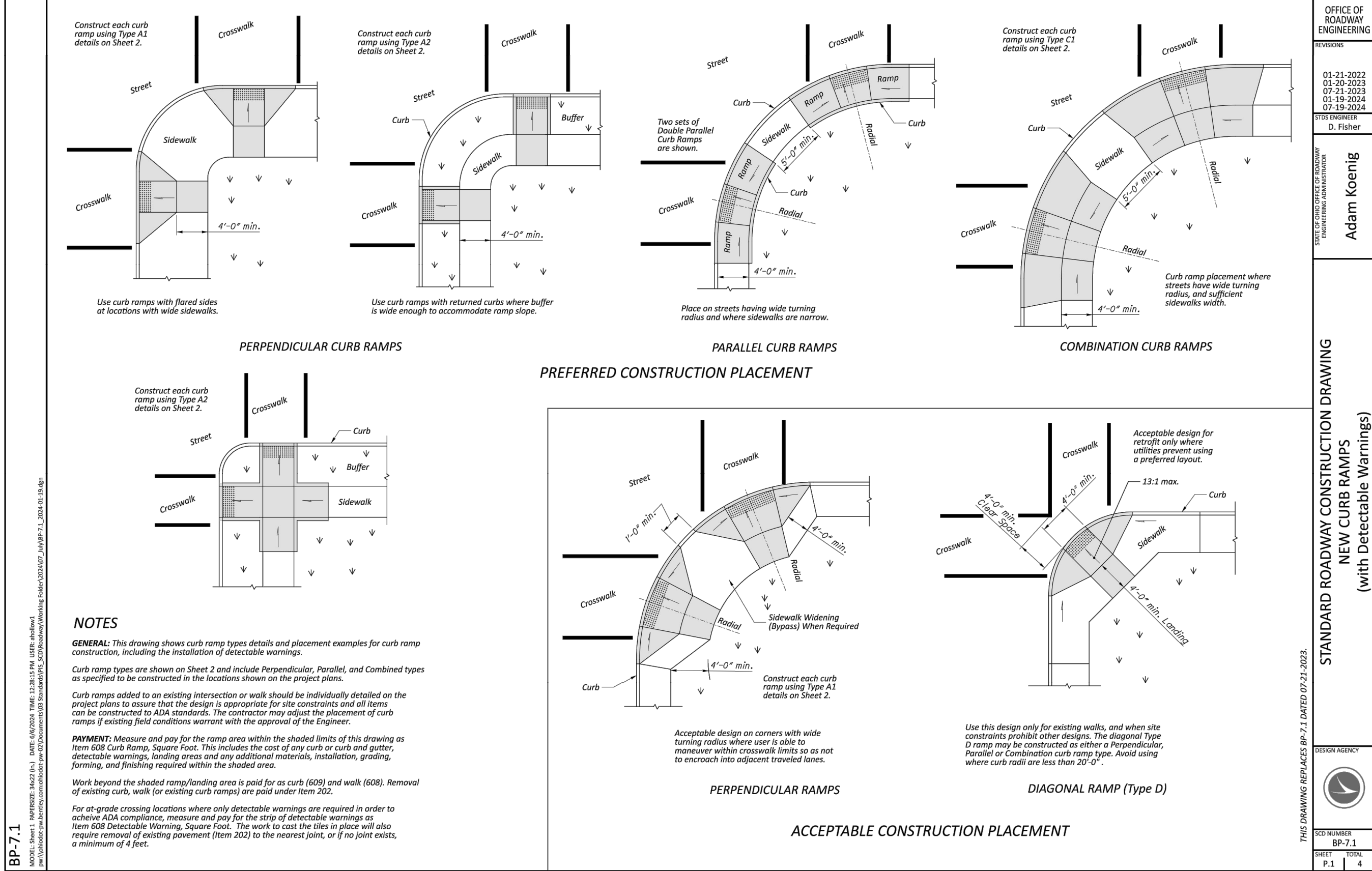
ISSUED FOR:	BID	NO	REVISION	DATE
ISSUE DATE:	8/4/2025			
SCALE:				
DESIGNED BY:	PMAD			
DRAWN BY:	PMAD			
CHECKED BY:	SRIG			

**BRIDGETOWN ROAD AND NOLAN  
AVENUE IMPROVEMENTS**  
CITY OF CHEVIOT  
HAMILTON COUNTY, OHIO

**DETAILS 2**

PROJECT NO.	32088
DISCIPLINE	CIVIL
SHEET NAME	DET2
SHEET	OF
4	12





REVISION	DATE

BID	NO

ISSUED FOR:	ISSUE DATE:	SCALE:	DESIGNED BY:	DRAWN BY:	CHECKED BY:

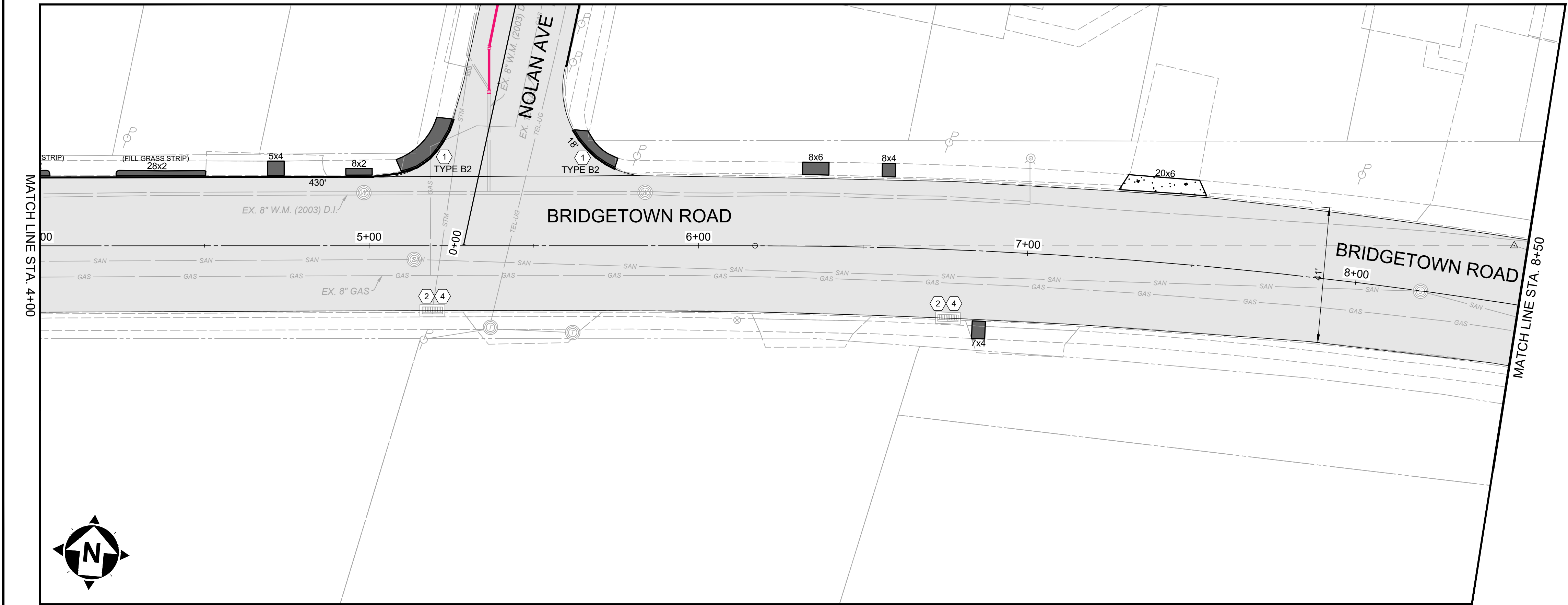
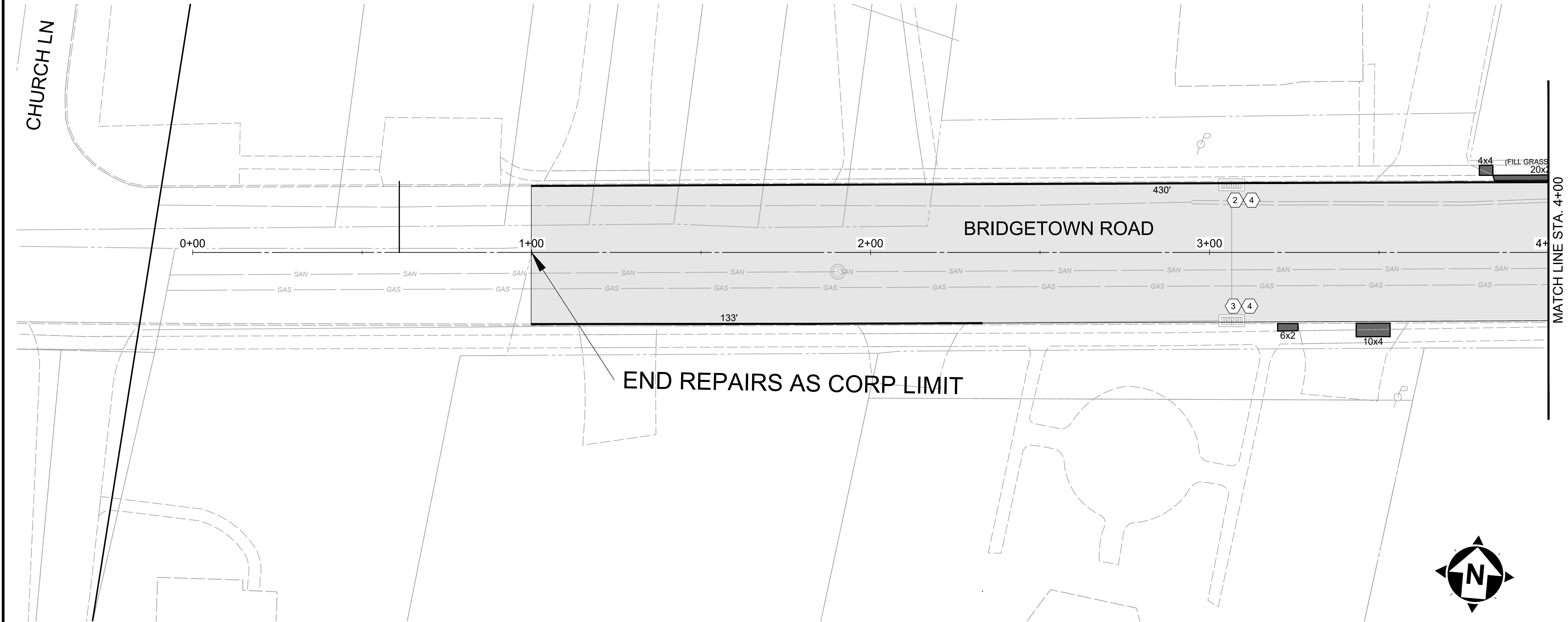
PROJECT NO.	DISCIPLINE	SHEET NAME







PROJECT NO.	DISCIPLINE	SHEET NAME

PROJECT NO.	DISCIPLINE	SHEET NAME

SHEET	OF



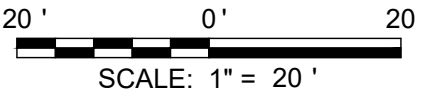



HATCH LEGEND	
	BRIDGETOWN ROAD ONLY ITEM 254 - 3" PAVEMENT PLANING & ITEM 441 - 1-1/2" ASPHALT CONCRETE LEVELING COURSE, TYPE 1, PG 64-22 (448) ITEM 441 - 1-1/2" SURFACE COURSE (FIBER REINFORCED)
	ITEM 252 - FULL DEPTH PAVEMENT REMOVAL AND REPLACEMENT, AS PER PLAN
	ITEM 608 - 5" CONCRETE WALK (MIN 7" AT DRIVEWAYS AND CURB RAMPS)
	ITEM 452, NON-REINFORCED CONCRETE PAVEMENT, MISC.: 7" PLAIN PORTLAND CEMENT CONCRETE DRIVEWAY REMOVAL & REPLACEMENT
	ITEM 608: CURB, MISC.: MODIFIED TYPE 6 CONCRETE CURB REPLACEMENT
	PR. WATERLINE, SEE GCWW PLANS

- NOTES**
- FULL DEPTH REPAIR WILL BE MARKED WHEN THE PLANING OPERATIONS HAVE BEEN COMPLETED, WITH A CONTINGENCY QUANTITY OF APP 20% OF TOTAL AREA.
  - ADJUSTMENTS TO VALVE BOXES, METERS OR OTHER ASSOCIATED GAS, ELECTRIC, TELEPHONE, WATER, OR CABLE FACILITIES, IF NECESSARY, SHALL BE CONSIDERED INCIDENTAL TO THE CONTRACT AND SHALL BE COMPLETED PER UTILITY OWNER REQUIREMENTS.
  - RESTORE ALL DOWNSPOUT LINES IN CURB. A CONTINGENCY QUANTITY FOR ITEM 611 - DOWN SPOUT CONDUIT, MISC.: PVC SCHEDULE 40 PIPE, 3" HAS BEEN PROVIDED IN THE CONTRACT QUANTITIES..
  - FINAL LOCATIONS IF CURB AND GUTTER REMOVE AND REPLACE AND DRIVE APRON REMOVE AND REPLACE TO BE MARKED IN FIELD BY ENGINEER

- CONSTRUCTION NOTES**
- ITEM 609 - CURB RAMP, BY TYPE
  - ITEM 611 - DRAINAGE STRUCTURE, MISC.: REBUILD TOP 24"
  - ITEM 611 - DRAINAGE STRUCTURE, MISC.: REBUILD TOP 36"
  - ITEM 611 - CATCH BASIN FRAME AND GRATE, AS PER PLAN

NOTE: FINAL LIMITS OF FULL DEPTH REPAIR AND DRIVEWAY APRON REPLACEMENT TO BE MARKED IN FIELD BY ENGINEER.





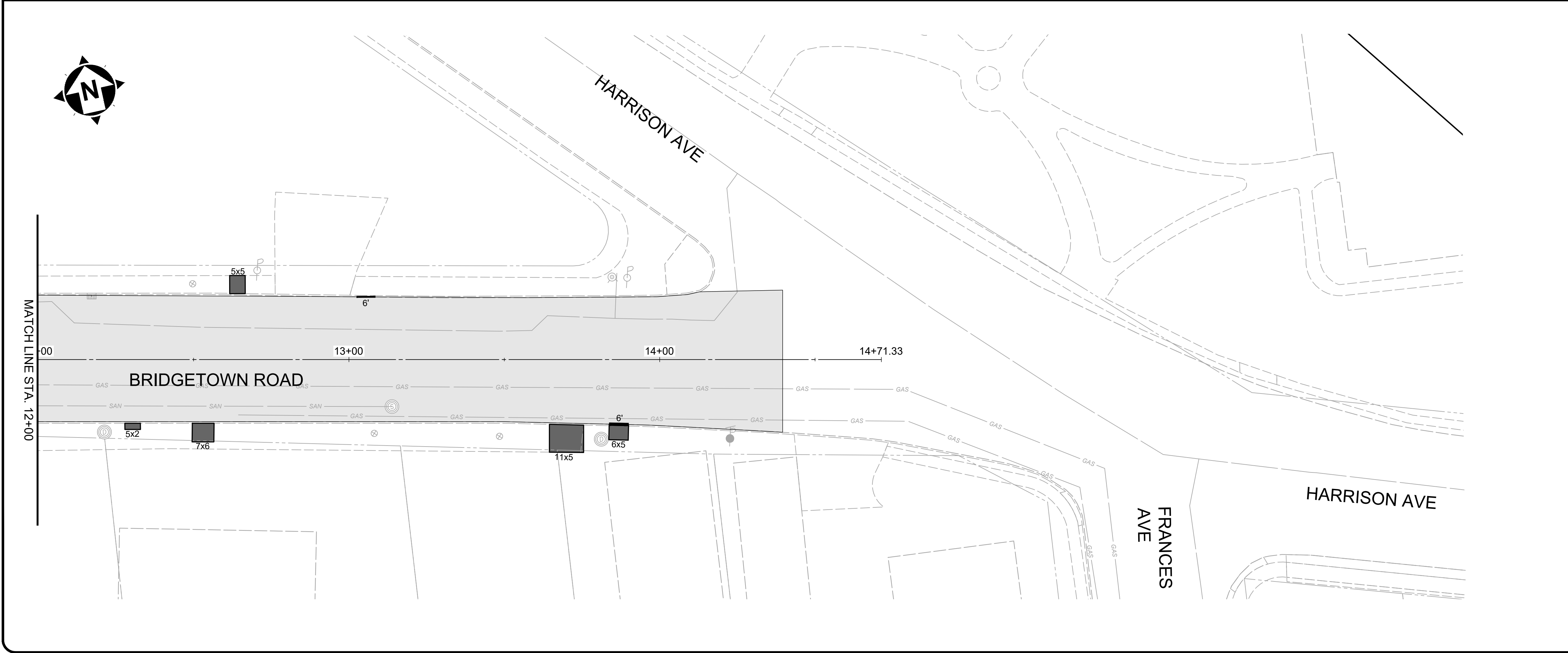
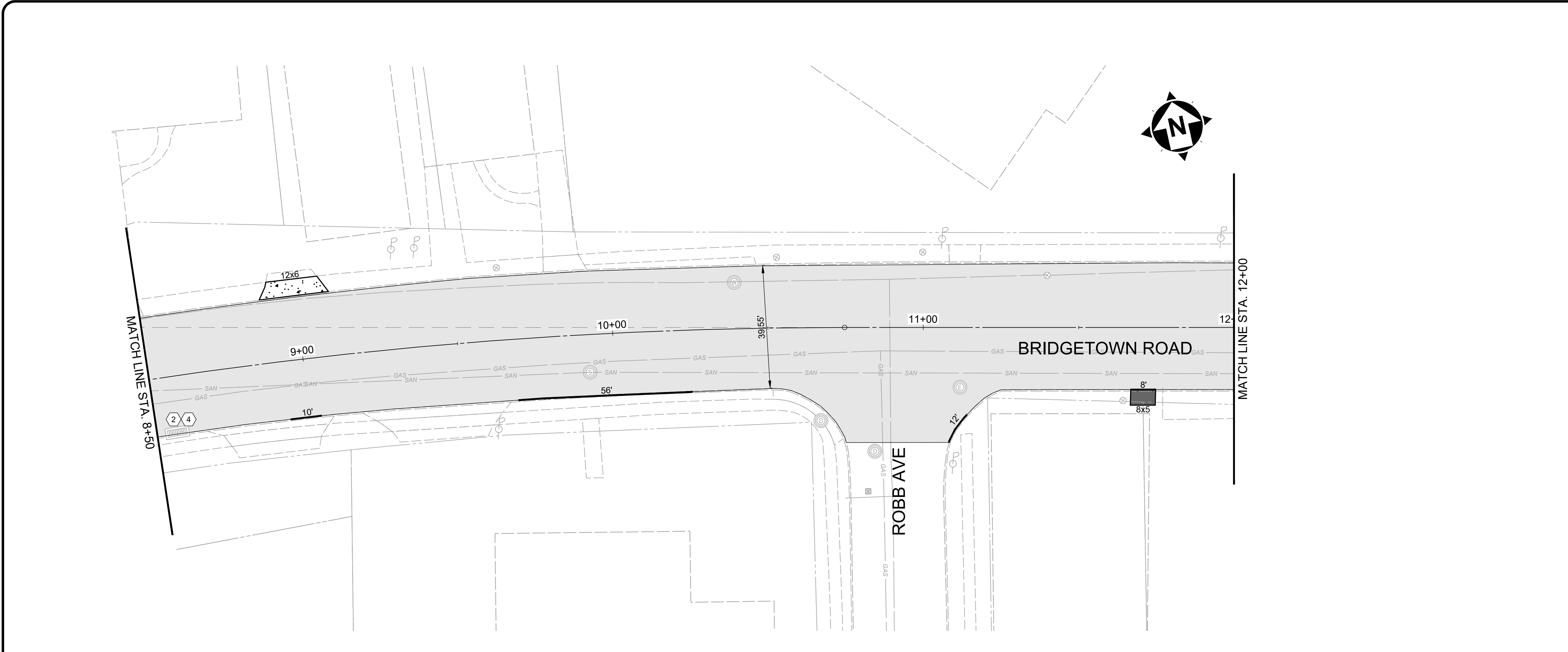
REVISION	DATE	NO	BID	ISSUED FOR:	ISSUE DATE:	SCALE:	DESIGNED BY:	DRAWN BY:	CHECKED BY:
			8/4/2025		8/4/2025	AS SHOWN	PMAD	PMAD	SRIG

**BRIDGETOWN ROAD AND NOLAN AVENUE IMPROVEMENTS**  
CITY OF CHEVIOT  
HAMILTON COUNTY, OHIO

**PLAN 1 - BRIDGETOWN RD**

PROJECT NO. <b>32088</b>	
DISCIPLINE <b>CIVIL</b>	
SHEET NAME <b>C-1</b>	
SHEET <b>6</b>	OF <b>12</b>





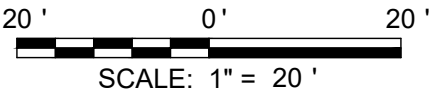
**HATCH LEGEND**

[Solid Grey]	BRIDGETOWN ROAD ONLY ITEM 254 - 3" PAVEMENT PLANING & ITEM 441 - 1-1/2" ASPHALT CONCRETE LEVELING COURSE, TYPE 1, PG 64-22 (448) ITEM 441 - 1-1/2" SURFACE COURSE (FIBER REINFORCED)
[Cross-hatch]	ITEM 252 - FULL DEPTH PAVEMENT REMOVAL AND REPLACEMENT, AS PER PLAN
[Dark Grey]	ITEM 608 - 5" CONCRETE WALK (MIN 7" AT DRIVEWAYS AND CURB RAMPS)
[Stippled]	ITEM 452, NON-REINFORCED CONCRETE PAVEMENT, MISC.: 7" PLAIN PORTLAND CEMENT CONCRETE DRIVEWAY REMOVAL & REPLACEMENT
[Thick Black Line]	ITEM 608: CURB, MISC.: MODIFIED TYPE 6 CONCRETE CURB REPLACEMENT
[Pink Dashed Line]	PR. WATERLINE, SEE GCWW PLANS

- NOTES**
- FULL DEPTH REPAIR WILL BE MARKED WHEN THE PLANING OPERATIONS HAVE BEEN COMPLETED, WITH A CONTINGENCY QUANTITY OF APP 20% OF TOTAL AREA.
  - ADJUSTMENTS TO VALVE BOXES, METERS OR OTHER ASSOCIATED GAS, ELECTRIC, TELEPHONE, WATER, OR CABLE FACILITIES, IF NECESSARY, SHALL BE CONSIDERED INCIDENTAL TO THE CONTRACT AND SHALL BE COMPLETED PER UTILITY OWNER REQUIREMENTS.
  - RESTORE ALL DOWNSPOUT LINES IN CURB. A CONTINGENCY QUANTITY FOR ITEM 611 - DOWN SPOUT CONDUIT, MISC.: PVC SCHEDULE 40 PIPE, 3" HAS BEEN PROVIDED IN THE CONTRACT QUANTITIES..
  - FINAL LOCATIONS IF CURB AND GUTTER REMOVE AND REPLACE AND DRIVE APRON REMOVE AND REPLACE TO BE MARKED IN FIELD BY ENGINEER

- CONSTRUCTION NOTES**
- ITEM 609 - CURB RAMP, BY TYPE
  - ITEM 611 - DRAINAGE STRUCTURE, MISC.: REBUILD TOP 24"
  - ITEM 611 - DRAINAGE STRUCTURE, MISC.: REBUILD TOP 36"
  - ITEM 611 - CATCH BASIN FRAME AND GRATE, AS PER PLAN

NOTE: FINAL LIMITS OF FULL DEPTH REPAIR AND DRIVEWAY APRON REPLACEMENT TO BE MARKED IN FIELD BY ENGINEER.



REVISION	DATE

ISSUED FOR:	BID	NO
	8/4/2025	
ISSUE DATE:		
SCALE:	AS SHOWN	
DESIGNED BY:	PMAD	
DRAWN BY:	PMAD	
CHECKED BY:	SRIG	

**BRIDGETOWN ROAD AND NOLAN AVENUE IMPROVEMENTS**  
CITY OF CHEVIOT  
HAMILTON COUNTY, OHIO

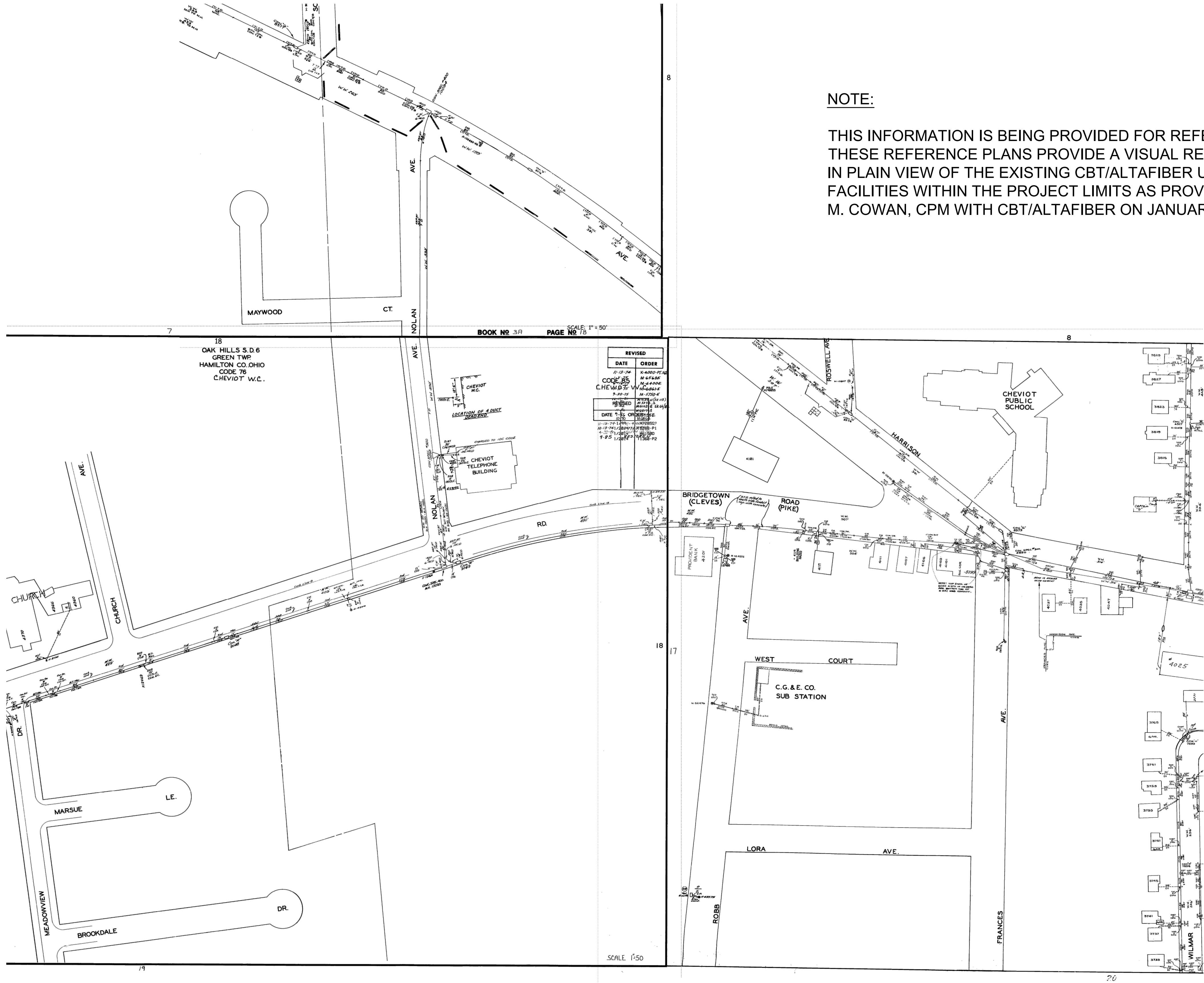
**PLAN 2 - BRIDGETOWN RD**

PROJECT NO. <b>32088</b>	
DISCIPLINE <b>CIVIL</b>	
SHEET NAME <b>C2</b>	
SHEET <b>7</b>	OF <b>12</b>









NOTE:  
THIS INFORMATION IS BEING PROVIDED FOR REFERENCE ONLY.  
THESE REFERENCE PLANS PROVIDE A VISUAL REPRESENTATION  
IN PLAIN VIEW OF THE EXISTING CBT/ALTA FIBER UNDERGROUND  
FACILITIES WITHIN THE PROJECT LIMITS AS PROVIDED BY BRECK  
M. COWAN, CPM WITH CBT/ALTA FIBER ON JANUARY 22, 2025.



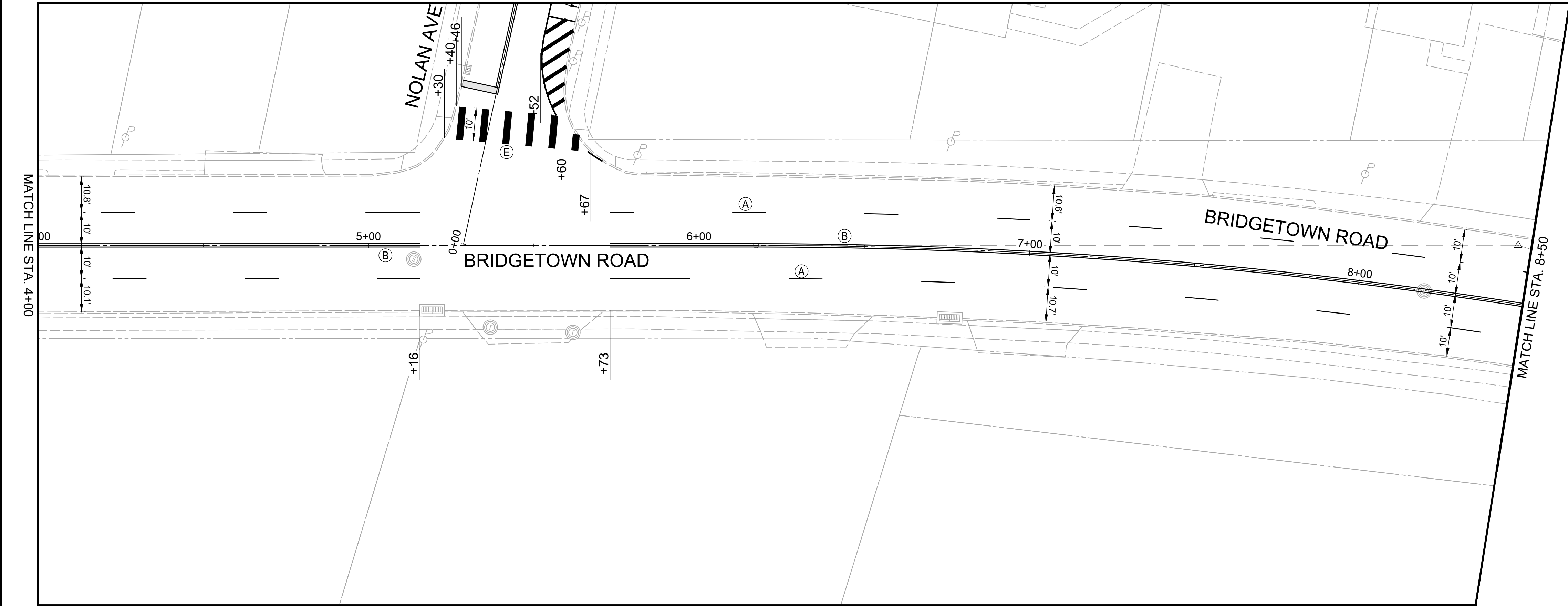
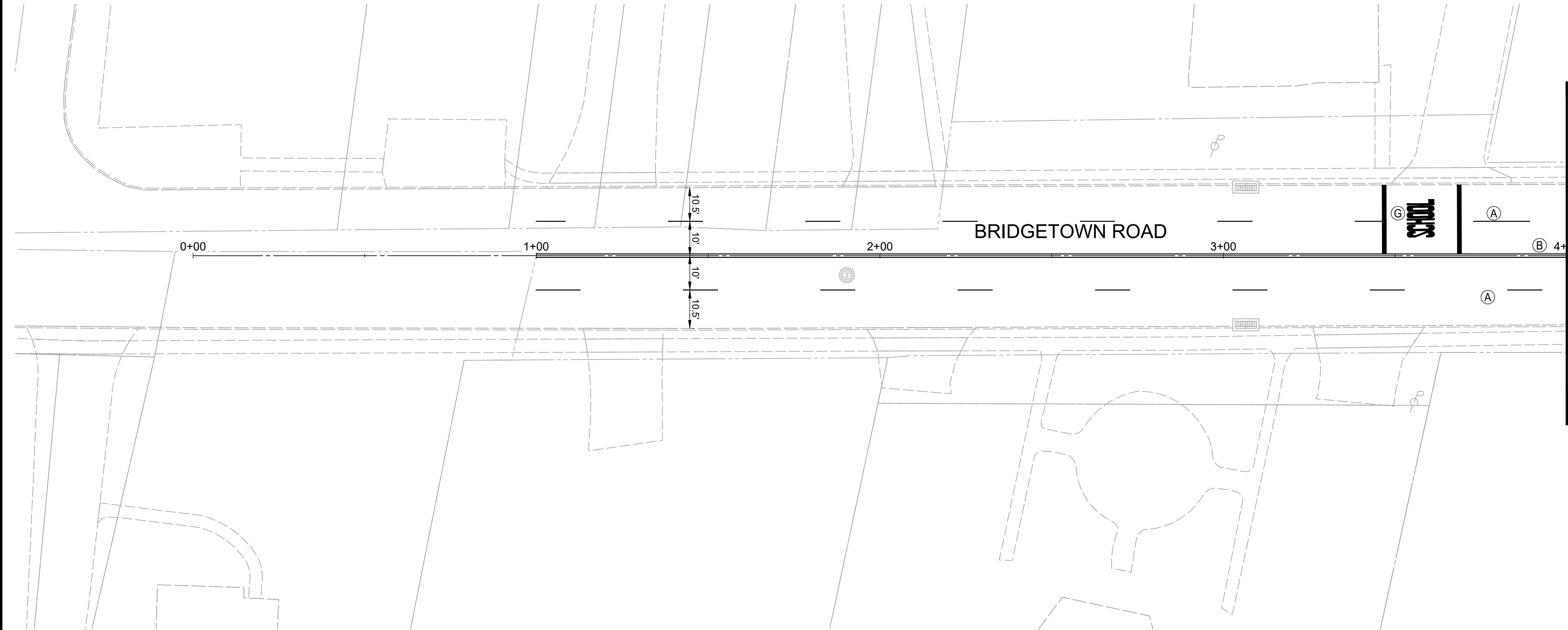
ISSUED FOR:	BID	NO	REVISION	DATE
ISSUE DATE:	8/4/2025			
SCALE:	AS SHOWN			
DESIGNED BY:	PMAD			
DRAWN BY:	PMAD			
CHECKED BY:	SRIG			

BRIDGETOWN ROAD AND NOLAN  
AVENUE IMPROVEMENTS  
CITY OF CHEVIOT  
HAMILTON COUNTY, OHIO

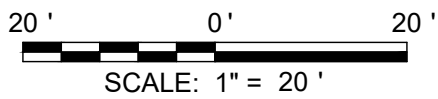
EX. UG CBT-ALTA FIBER MAP

PROJECT NO.	32088
DISCIPLINE	CIVIL
SHEET NAME	UTL1
SHEET	9
OF	12





KEYNOTES	
(A)	LANE LINE, 4"
(B)	CENTER LINE, 4"
(C)	EDGE LINE, 4"
(D)	STOP LINE, 24"
(E)	CROSSWALK LINE, 24" (ODOT SCD TC-74.10)
(F)	TRANSVERSE, DIAGONAL LINE, 24" (INC. TO COST OF LANE LINE)
(G)	SCHOOL SYMBOL MARKING, 96"



BRIDGETOWN ROAD AND NOLAN AVENUE IMPROVEMENTS  
CITY OF CHEVIOT  
HAMILTON COUNTY, OHIO

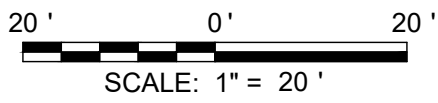
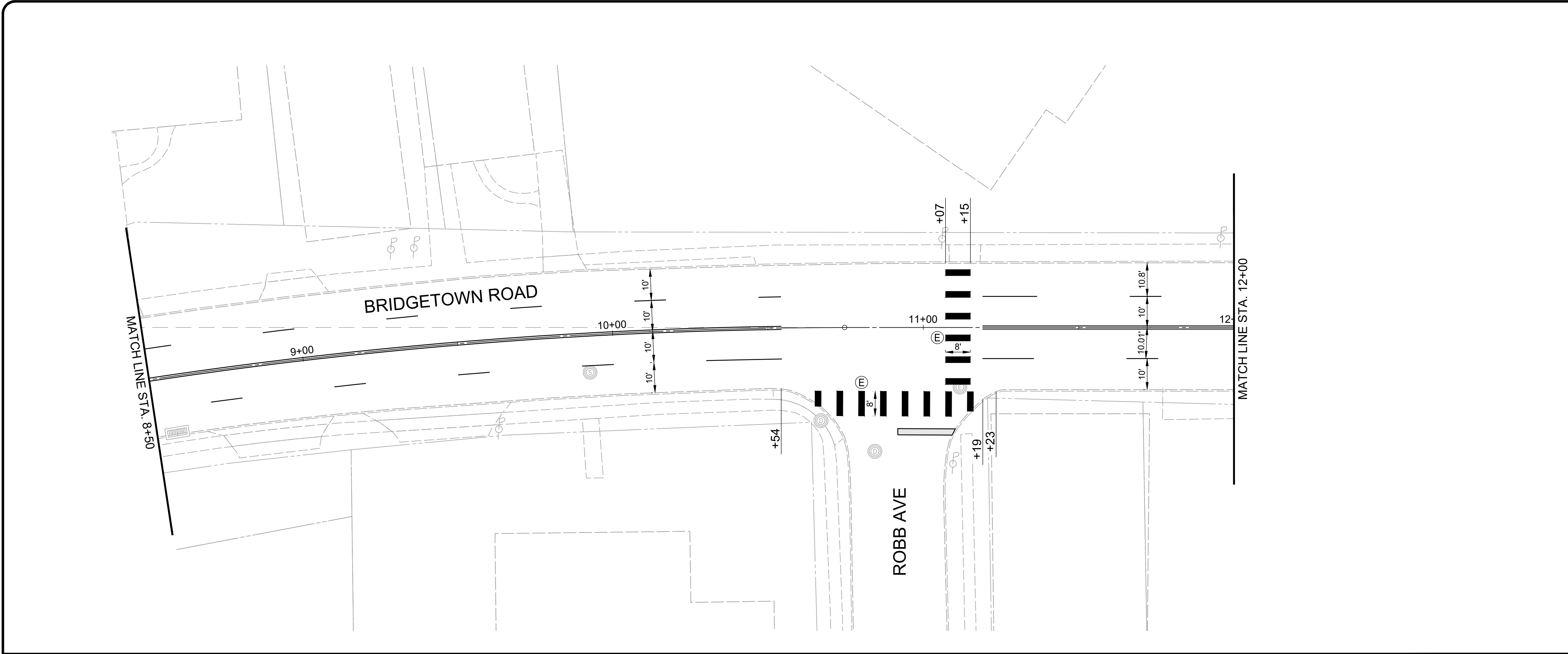
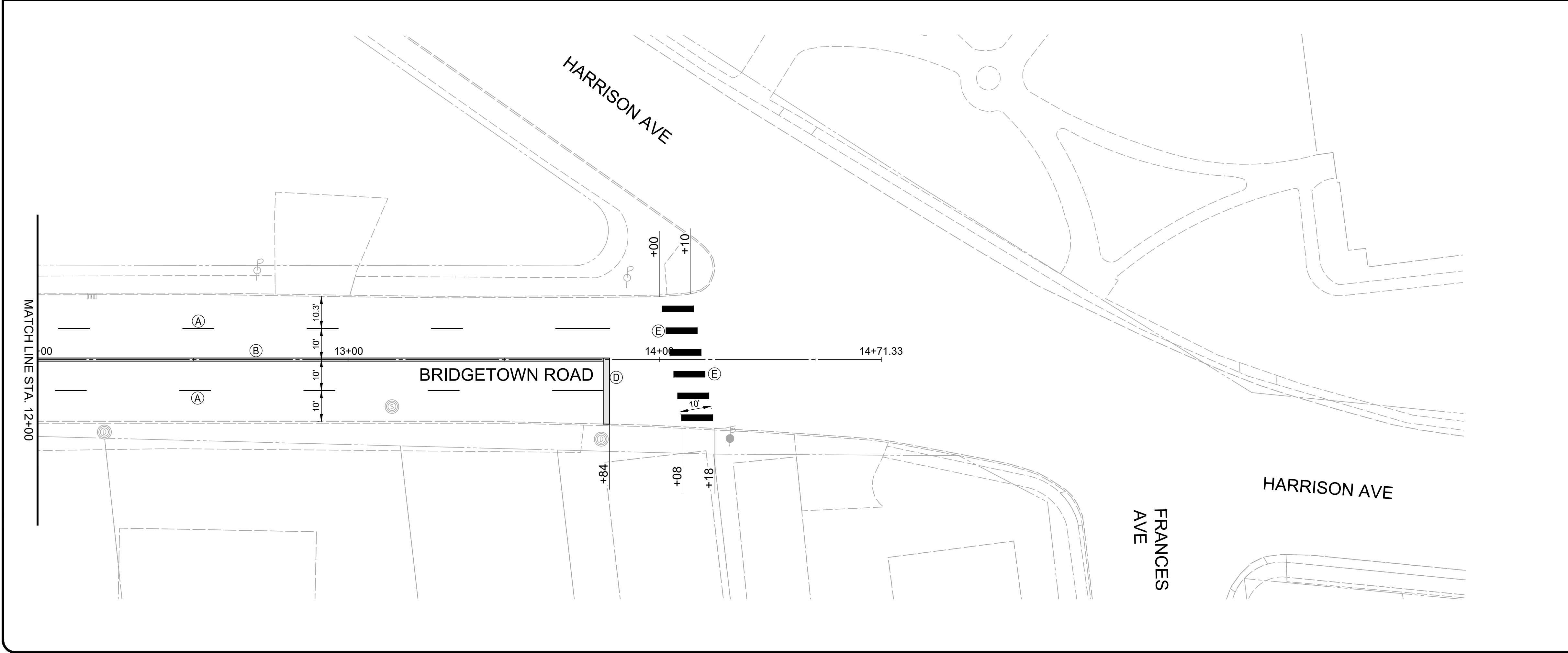
PAVEMENT MARKINGS 1

PROJECT NO. 32088	
DISCIPLINE CIVIL	
SHEET NAME PM1	
SHEET 10	OF 12

ISSUED FOR:	BID	NO	REVISION	DATE
ISSUE DATE:	8/4/2025			
SCALE:	AS SHOWN			
DESIGNED BY:	PMAD			
DRAWN BY:	PMAD			
CHECKED BY:	SRIG			







KEYNOTES	
(A)	LANE LINE, 4"
(B)	CENTER LINE, 4"
(C)	EDGE LINE, 4"
(D)	STOP LINE, 24"
(E)	CROSSWALK LINE, 24" (ODOT SCD TC-74.10)
(F)	TRANSVERSE, DIAGONAL LINE, 24" (INC. TO COST OF LANE LINE)
(G)	SCHOOL SYMBOL MARKING, 96"

PROJECT NO. <b>32088</b>	
DISCIPLINE <b>CIVIL</b>	
SHEET NAME <b>PM2</b>	
SHEET <b>11</b>	OF <b>12</b>

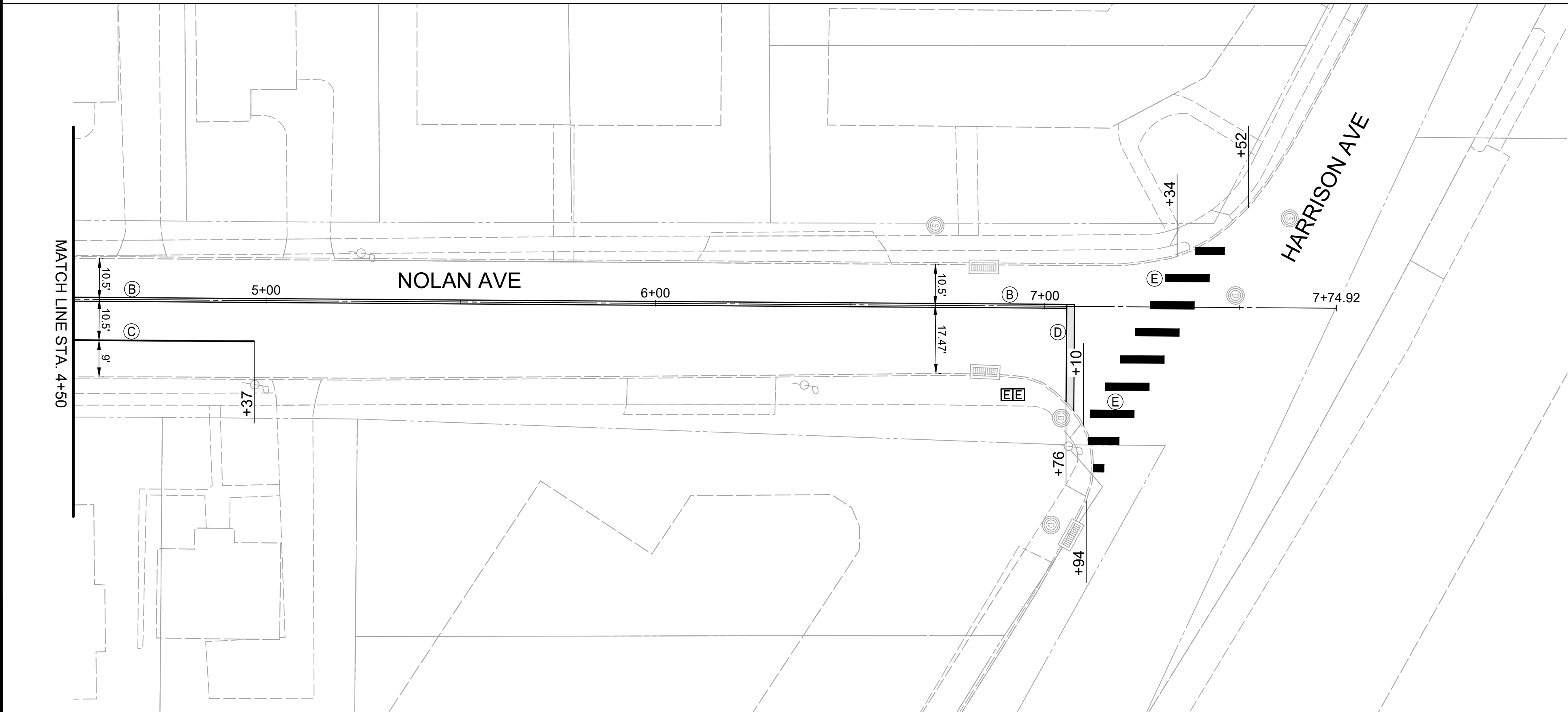
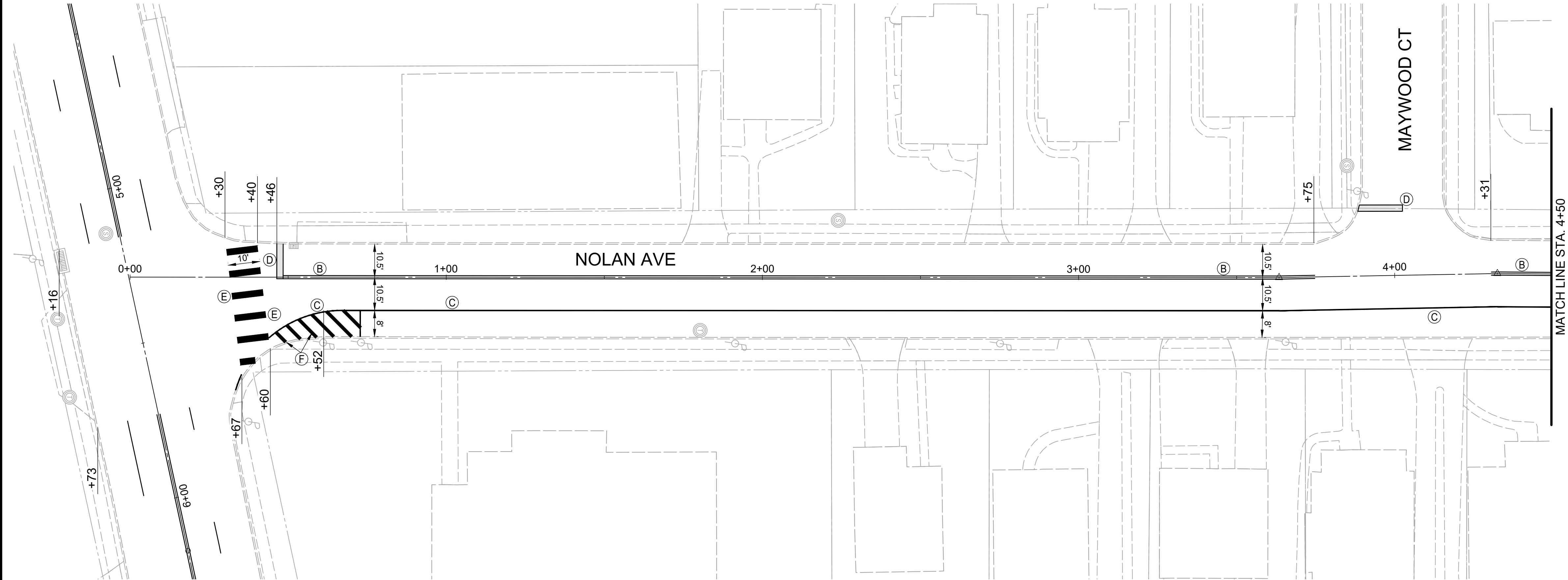
**BRIDGETOWN ROAD AND NOLAN AVENUE IMPROVEMENTS**  
CITY OF CHEVIOT  
HAMILTON COUNTY, OHIO

**PAVEMENT MARKINGS 2**

ISSUED FOR:	BID NO	REVISION	DATE
ISSUE DATE:	8/4/2025		
SCALE:	AS SHOWN		
DESIGNED BY:	PMAD		
DRAWN BY:	PMAD		
CHECKED BY:	SRIG		







KEYNOTES

- (A) LANE LINE, 4"
- (B) CENTER LINE, 4"
- (C) EDGE LINE, 4"
- (D) STOP LINE, 24"
- (E) CROSSWALK LINE, 24" (ODOT SCD TC-74.10)
- (F) TRANSVERSE, DIAGONAL LINE, 24" (INC. TO COST OF LANE LINE)
- (G) SCHOOL SYMBOL MARKING, 96"

BRIDGETOWN ROAD AND NOLAN  
AVENUE IMPROVEMENTS  
CITY OF CHEVIOT  
HAMILTON COUNTY, OHIO

PAVEMENT MARKINGS 3

PROJECT NO.	
32088	
DISCIPLINE	
CIVIL	
SHEET NAME	
PM3	
SHEET	OF
12	12

ISSUED FOR:	BID	NO	REVISION	DATE
ISSUE DATE:	8/4/2025			
SCALE:	AS SHOWN			
DESIGNED BY:	PMAD			
DRAWN BY:	PMAD			
CHECKED BY:	SRIG			

